



Stand-On Compact Hydro Drive Commercial Mower 36"



OWNER'S MANUAL & PARTS LIST

www.BradleyMowers.com



Sep. 10th 2023

Bradley Stand-On Compact Mower Owner's Manual

IMPORTANT MESSAGE

This machine comes with an Owner's Manual and List. The useful life and good service you receive from this machine depends to a large extent on how well you read and understand this manual. Treat your machine properly, lubricate and adjust it as instructed, and it will give you many years of reliable service.

Your safe use of this product is one of our prime objectives. Many safety features are built in, but we also rely on your good sense and care to achieve accident-free operation. For best protection, study the manual thoroughly. Learn the proper operation of all controls. Observe all safety precautions. Follow all instructions and warnings completely. Do not remove or defeat any safety features.

See a Havener Enterprises, Inc. dealer for any service or parts needed. Havener Enterprises, Inc. service ensures that you continue to receive the best results possible from Havener Enterprises, Inc. products. You can trust Havener Enterprises, Inc. replacement parts because they are manufactured with the same high precision and quality as the original parts.

Havener Enterprises, Inc. designs and builds its equipment to serve many years in a safe and productive manner. For longest life, use this machine only as directed in the manual, keep it in good repair and follow safety warnings and instructions.

| | |
|--|-------|
| TABLE OF CONTENTS | PAGE |
| SAFETY | 1 |
| SAFETY INFORMATION | 2-3 |
| OPERATING THE MOWER | 4-6 |
| ASSEMBLY AND SETUP | 7 |
| MAINTENANCE CHART | 8 |
| MAINTENANCE RECORD | 9 |
| MAINTENANCE | 10-16 |
| ADJUSTMENTS | 17-18 |
| BELT REPLACEMENT | 19 |
| SPECIFICATIONS | 20-21 |
| UNPACKING INSTRUCTION..... | 22-27 |
| PARTS SECTION | 28 |
| ENGINE ASSEMBLY | 29-30 |
| LIFTING ASSEMBLY | 31-32 |
| DASHBOARD PLATE ASSEMBLY..... | 33-34 |
| HANDLE CONTROLS ASSEMBLY..... | 35-38 |
| DECK ASSEMBLY | 39-41 |
| DECK IDLER ARM ASSEMBLY | 42-43 |
| TRANSMISSION ASSEMBLY | 44-46 |
| FRONT WHEEL ASSEMBLY..... | 47-48 |
| PARKING & BATTERY ASSEMBLY..... | 49-50 |
| BATTERY BOX & ANGLE GAS TANK BRACKET COMPARISON..... | 51-52 |
| 36SC SAFETY AND INFORMATION DECALS..... | 53 |
| BRIGGS & STRATTON WIRING DIAGRAM | 54 |
| BRADLEY MOWERS PRODUCT REGISTRATION | 56 |

NOTICE!!!

Unauthorized modifications may present extreme safety hazards to operators and bystanders and could also result in product damage.

Havener Enterprises, Inc. strongly warns against rejects and disclaims any modifications, add-on accessories or product alterations that are not designed, developed, tested and approved by Havener Enterprises, Inc. Engineering Department. Any Havener Enterprises, Inc. product that is altered, modified or changed in any manner not specifically authorized after original manufacture including the addition of "after-market" accessories or component parts not specifically approved by Havener Enterprises, Inc. will result in the Havener Enterprises, Inc. Warranty being voided.

Any and all liability for personal injury and/or property damage caused by any unauthorized modifications, add-on accessories or products not approved by Havener Enterprises, Inc. will be considered the responsibility of the individual(s) or company designing and/or making such changes. Havener Enterprises, Inc. will vigorously pursue full indemnification and costs from any party responsible for such unauthorized post-manufacture modifications and/or accessories should personal injury and/or property damage result.

This Operator's Manual should be regarded as part of the machine. Suppliers of both new and second-hand machines must make sure that this manual is provided with the machine.



This symbol means:
ATTENTION!

Your safety and the safety of others is involved.

Signal word definitions:

The signal words below are used to identify levels of hazard seriousness. These words appear in this manual and on the safety labels attached to Havener Enterprises, Inc. machines. For your safety and the safety of others, read and follow the information given with these signal words and/or the symbol shown above.

DANGER

DANGER indicates an imminently hazardous situation which, if not avoided, WILL result in death or serious injury.

WARNING

WARNING indicates a potentially hazardous situation which, if not avoided, COULD result in death or serious injury.

CAUTION

CAUTION indicates a potentially hazardous situation which, if not avoided, MAY result in minor or moderate injury. It may also be used to alert against unsafe practices or property damage.

CAUTION

CAUTION used without the safety alert symbol indicates a potentially hazardous situation which, if not avoided, MAY result in property damage.



MODEL NUMBER: This number appears on sales literature, technical manuals and price lists.

SERIAL NUMBER: This number appears only on your mower. It contains the model number followed consecutively by the serial number. Use this number when ordering parts or seeking warranty information. Located behind rider pad on frame of unit.

SAFETY INFORMATION

Read This Manual Carefully and Thoroughly Before Operating Your Mower!

1. Carefully and thoroughly read the owner's manual. Allow adequate time to fully understand the controls and operation of the equipment. Never allow anyone to operate the mower that has not read and fully understood the owner's manual.
2. Never allow anyone to operate the mower who is not old enough, large enough, and strong enough to safely handle the machine.
3. Do not carry passengers. Avoid mowing while people, especially children, and pets, are nearby since rotating blades can throw rocks and other items with enough force to cause serious injury.

BEFORE USING EQUIPMENT

OPERATOR

Wear protective clothing while mowing. Long trousers and safety glasses will help reduce the risk of injury from thrown objects. It is recommended that steel toe shoes with aggressive soles or some other type of substantial footwear be worn to help protect your feet and maintain traction on slopes or uneven ground.

MOWING AREA

Thoroughly inspect the area where the equipment is to be used. Look for items such as stones, sticks, bones, wire, and other objects. When struck by the mower, these and other objects may become projectiles that could lead to serious injury and/or death.

MOWER

For your safety and the long life of your mower, always inspect the mower before each use. Before inspection, make sure the mower is on a flat and level surface, the blades are disengaged, the ignition switch off with the key removed, and the spark plug wire is off of the spark plug(s) and hidden so that accidental contact cannot be made.

GENERAL CONDITION

- Walk around the mower looking for any fluid spills or leaks on or underneath the mower. Remove any and all excessive debris, dirt, and/or fluids.
- Look for signs of damage or excessive wear. Check the tightness of all nuts, bolts, pins, and screws. Tighten any that may be loose and replace any that may have been lost during use.
- Be sure the safety interlock controls are operating properly so that the engine cannot be started unless the ground speed control lever is in neutral and the blades disengaged.
- Check the mower blades for any damage or abnormal wear and replace in sets so that they are balanced.
- Check the mower cutting height to assure a high quality and even cut.
- Check the tire pressure on all four (4) tires.
- Check all belts for proper wear and correct tension.
- Check engine oil and air filter as recommended in the engine manufacturer's operators manual.

OPERATION OF EQUIPMENT

1. **DANGER:** Gasoline is highly flammable and explosive. Do not add fuel while engine is running or is hot. Keep open flames, sparks, and heat away from the fuel and store fuel in containers specifically designed for that purpose. Add fuel outdoors only and if the fuel is spilled, Do not start the engine. Manually push the mower away from the spill and immediately wipe up.
2. **DANGER:** Gases emitted by a charging battery are explosive. Keep heat, sparks and open flames away from a charging battery.
3. Do not operate the engine in a confined space where dangerous carbon monoxide fumes can collect. Carbon monoxide is odorless, tasteless, and can be fatal.
4. Mow only in daylight.
5. Make sure the mower is in neutral and the blades are disengaged before attempting to start the engine.
6. Do not stop or start suddenly when going uphill. Never use riding attachments on slopes since there is an increased risk that they might roll over.
7. Avoid steep slopes and use extreme caution when changing directions or speed when operating on a slope.
8. Be extremely careful when operating on a slope or when the grass is damp or wet. Reduced traction could cause sliding. Never mow by pulling the mower back towards you as you might slip.
9. Watch for traffic when crossing surfaces other than grass (i.e. transporting), loading a trailer or vehicle, or when the mower is not in use.
10. Never operate the mower with defective guards, shields, or without the safety devices securely mounted in place.
11. Never direct discharge of material toward bystanders or allow anyone near the mower while in operation.
12. Do not change the engine governor settings or over-speed the engine.
13. Always stop the engine whenever you leave the mower, even for a moment.
14. To help reduce the risk of a fire hazard, keep the engine and the area around the engine free of grass, leaves, or any other type of foreign material.
15. Beware of cutting edges. Always wear gloves for safety when performing blade maintenance activities. Beware on multiple blade units since the rotation of one blade may cause the rotation of the other blades.
16. Keep body and hands away from pin holes or nozzles that eject hydraulic fluid since fluid escaping under pressure may have sufficient force to penetrate skin and cause serious injury. If foreign fluid is injected into the skin, it must be surgically removed within a few hours by a doctor familiar with this form of injury. Always use paper or cardboard and not hands to search for leaks.

OPERATING THE MOWER

It is recommended that before you operate the mower, you allow adequate time to fully understand the controls and operation of the equipment. When reading this manual, it is recommended that you do so with the equipment nearby for quick orientation, to reference the controls, and understand maintenance adjustments.

OPERATING CONTROLS

Before continuing to read the manual, it is recommended that you take adequate time to identify the controls of the mower.




- | | |
|-----------------------|-----------------------|
| A PTO Switch | F Choke Control |
| B Safety Switch | G Parking Brake Lever |
| C Left Control Lever | H Ignition/Key Switch |
| D Right Control Lever | I Neutral Lever |
| E Throttle Control | |

STARTING THE ENGINE (Make Sure Battery Is Fully Charged)

DANGER: Do not operate the engine in a confined space where dangerous carbon monoxide fumes can collect. Carbon monoxide is odorless, tasteless, and can be fatal.

After going through the steps on pages 3 and 4, you are ready to start the engine.

NOTE: This unit was shipped without gas. Be sure to add fresh gas and double check the oil in the engine before attempting to start the mower.

1. Make sure the Parking Brake Lever is in the "ON" position.
2. Make sure the Neutral lever is disengaged.
3. Make sure the PTO switch is not engaged.
4. Slide the Throttle Control to  position, "Choke" if the engine is cold.
5. For Electric Start engines, turn the key clockwise to the "Start" position. Once started, the key will return to the "Run" position. Note: Do not keep the key in the "Start" position more than a few seconds. If engine does not start, wait 15 seconds before trying again.
6. Once the engine is running, slowly move the Throttle Control to the desired engine speed.

MOVING THE MOWER FORWARD

Caution: Become completely familiar with the operation characteristics of the mower before attempting to use it.

1. Make sure the Left Control Lever is down out of the Neutral Lock position.
2. Gently push the controls forward. Push the Left and Right Control Levers away from you an equal amount to go straight. It is recommended you start slow and increase your speed as you increase your comfort with the controls.
3. Allowing the Left and Right Control Levers to return to a center neutral position allows the mower to stop moving. Note: if the operator lets go of the Left Control Lever while the blades are engaged And/or the mower is moving, the safety interlock system will stop the engine. To restart the mower, reset the Blade Control Lever to "Off" and the parking brake to the "On" position.

NOTE: Top speed is suggested only for transport.

MOVING THE MOWER IN REVERSE

Slowly and evenly pull the Left and Right Control Levers toward you. The more the Control Levers are pulled toward you, the faster you will move. It is recommended to move in reverse slowly.

NOTE: When moving in reverse, be aware of your surroundings by looking down and behind.

STOPPING THE MOWER

Gently let the Left and Right Control Levers return to their neutral, at rest position. If the operator is leaving the operator position for any reason, disengage the blades, shut off the engine, engage the parking brake, and remove the key.

NOTE: Park the mower on level ground. If it is not possible to do so, be sure to block the wheels to prevent the mower from rolling away.

TURNING THE MOWER

To turn the mower in the desired direction, gently pull the chosen direction's Control Lever toward you (i.e. to turn right, pull the Right Control Lever toward you). The more a particular Control Lever is pulled toward you, the sharper the turn the mower will make.

MOWING

DANGER: Thoroughly inspect the area where the mower is to be used. Look for items such as stones, sticks, wire, and other objects. When struck by the mower, these and other objects may become projectiles that could lead to serious injury and /or death. Clear area of all debris and keep people and pets away.

DANGER: Do not operate the mower with defective guards or shields. Do not operate the mower without the safety devices securely in place.

For the highest quality of cut and performance, mow with the engine at full throttle. Quality of cut may be determined by the ground speed and speed of the mower. Generally, the slower the mower travels across the terrain, the better the cut.

1. With the engine running and the mower placed at the beginning of the area to be mowed, make sure the left control lever is down and out of the neutral lock position.
2. Pull the PTO switch to engage the blades.
3. To disengage blades, come to a complete stop and pull the Blade Control Lever to the "Off" Position.

MOVING THE MOWER WITH THE ENGINE OFF

1. Engage the Parking Brake Lever by moving it to the "On" position.
2. Engage the Neutral Lever by moving it in the direction of the arrow.
3. Disengage the Parking Brake Lever by moving it to the "Off" position.
4. Move the mower.

NOTE: Be careful of the weight of the mower as you move it without using the engine.

5. Before starting the mower, make sure the driving controls are in neutral with left control in "up" position, the parking brake is engaged and the neutral lever is disengaged.

PARKING THE MOWER

Pull the Parking Brake Lever to the "On" position.

NOTE: Gently engage the braking mechanism. Excessive force may cause damage.

Caution: If you are not familiar with the operation of the Hydro drive and zero turn feature, practice turning and maneuvering with the controls before engaging the blade.

TOOLS REQUIRED FOR ASSEMBLY

- Ratchets: 16mm, 17mm
- Sockets: 16mm, 17mm
- Wrenches: 16mm, 17mm
- Tire pressure gauge
- Blocks (for deck leveling)

NOTE: All references below to the "right" or "left" are with respect to an operator at the controls.

1. UNCRATE UNIT

Discard packing materials. Remove and discard shipping brackets. Tighten caster wheel axle bolts against caster axle spanner bushings.

2. Set rear tire pressures to 20 p.s.i. Tires are overinflated for shipping. Front tires should be 40 p.s.i.

FINAL PREPARATIONS

- Check the engine and hydraulic oil levels. Top up with the correct oil if necessary. Use SAE 5W30 motor oil for the engine. Use fresh, clean SAE 20W50 motor oil for the hydraulic system. After running for one hour, let hydraulic system oil cool. When cold, check levels.

WARNING: Battery acid is caustic and fumes are explosive and cause serious injury or death.

Use insulated tools, wear protective glasses or goggles and protective clothing when working with batteries. Read and obey the battery manufacturer's instructions.

Be certain the ignition switch is OFF and the key has been removed before servicing the battery.

- a) Verify battery polarity before connecting or disconnecting the battery cables.
 - b) When installing the battery, always assemble the RED, positive (+) battery cable first and the ground, BLACK, negative (-) cable last.
 - c) Tighten cables securely to battery terminals and apply a light coat of silicone dielectric grease to terminals and cable ends to prevent corrosion. Keep terminal covers in place.
- Read Operation and Safety Manual before starting.
 - Deck can be adjusted to allow for the best horsepower, best quality of cut, or best striping. See deck leveling procedure in the Adjustments Section in this manual to set as desired.
 - Run engine at full RPM for 5 minutes before engaging blades to allow the engine to be fully lubricated before load is applied.
 - Check the hydro stat neutral adjustment. Neutral is set at the factory but may require readjustment if air trapped during the initial oil fill has worked out of the system. See Adjustments Section later in this manual.
 - Do not use the machine without an approved grass collector, the grass discharge chute or mulching plates correctly fitted.

Bradley Stand-On Compact Mower Owner's Manual

| MAINTENANCE OPERATION | Maintenance is an ongoing job. These intervals are maximum times between maintenance operations. Perform more often under severe conditions. | | | | | | |
|---|--|----------------------------------|----------------------|----------------------|-----------------------|-----------------------|--------|
| | FIRST 5 HOURS | BEFORE EACH USE | EVERY 25 HOURS | EVERY 50 HOURS | EVERY 100 HOURS | EVERY 200 HOURS | YEARLY |
| ENGINE | | | | | | | |
| Consult the engine manual for additional information and instructions | | | | | | | |
| Check/Top Up Oil Level | | X | | | | | |
| Check For Leaks | | X | | | | | |
| Clean Air Intake Screen | | X | | | | | |
| Clean Air Cleaner Precleaner | | | X | | | | |
| Clean Air Cleaner Element | | | X | | | | |
| Clean Cooling Fans | | | | | X | | |
| Change Oil And Filter | X | See engine manufacturer's manual | | | | | |
| Check/Replace Spark Plugs | | | | | | X | |
| TRANSAXLE | | | | | | | |
| Check Oil Level | X | X | | | | | |
| Check For Leaks | X | X | | | | | |
| Change Oil And Filter | | | | | | X | |
| MACHINE | | | | | | | |
| Check Interlock Operation | | X | | | | | |
| Check Tire Pressures | | X | | | | | |
| Check/Top Up Battery | | | | | | | X |
| Lubricate All Points | | X | | | | | |

[illegible]

CHECK DAILY MAINTENANCE RECORD

Operator Presence Interlock System-Start Operation

For the engine to crank, the parking brake must be ON, the PTO (blades) OFF. Stand on the operator platform and check, one by one, if the engine will crank with the parking brake OFF or the PTO (Blades) ON.

Operator Presence Interlock System-Run Operation

In order for the engine to run, the operator must either be standing on the platform, or walking behind the unit with the platform up, the parking brake in the OFF position and the LH control handle held down out of the neutral position.

The engine may also run if the parking brake is in the ON position, the LH control handle is in the NEUTRAL position rotated up, and the PTO (blades) are OFF.

To check:

1. Start the engine and run at 1/2 throttle.
2. With the LH control handle in the NEUTRAL position rotated up, move the parking brake lever to OFF and turn the PTO (Blades) ON. Each check should kill the engine after 1/2 second delay. (A 1/2 second delay is built into the system to prevent engine cut-out when traversing rough terrain.)

Repair machine before using if the Operator Presence Interlock System does not operate correctly in start or run. Contact your authorized Bradley dealer.

Hardware

Tighten any nuts and bolts found loose. Replace any broken or missing cotter pins. Repair any other problems before operating.

Tire pressure

Rear Tires should be kept inflated at 20p.s.i. Improper tire inflation can cause rapid tire wear and poor traction. Uneven inflation can cause uneven cutting. Front tires should be 40p.s.i.

BATTERY-AGM TYPE BATTERY SUPPLIED

WARNING: Battery acid is caustic and fumes are explosive and can cause serious injury or death. Use insulated tools, wear protective glasses or goggles and protective clothing when working with batteries. Read and obey the battery manufacturer's instructions.

Be certain the ignition switch is OFF and the key has been removed before servicing the battery.

1. Verify battery polarity before connecting or disconnecting the battery cables.
2. When installing the battery, always assemble the RED, positive(+) battery cable first and the ground, BLACK, negative(-) cable last.
3. When removing the battery, always remove the ground, negative(-) cable first and the red, positive(+) cable last.

4. AGM type battery. Use AGM charger when charging.
5. Clean the cable ends and battery posts with steel wool. Use a solution of baking soda and water to clean the battery. Do not allow the solution to enter into the battery cells.
6. Tighten cables securely to battery terminals and apply a light coat of silicone dielectric grease to terminals and cable ends to prevent corrosion. Keep terminal covers in place.

LUBRICATION

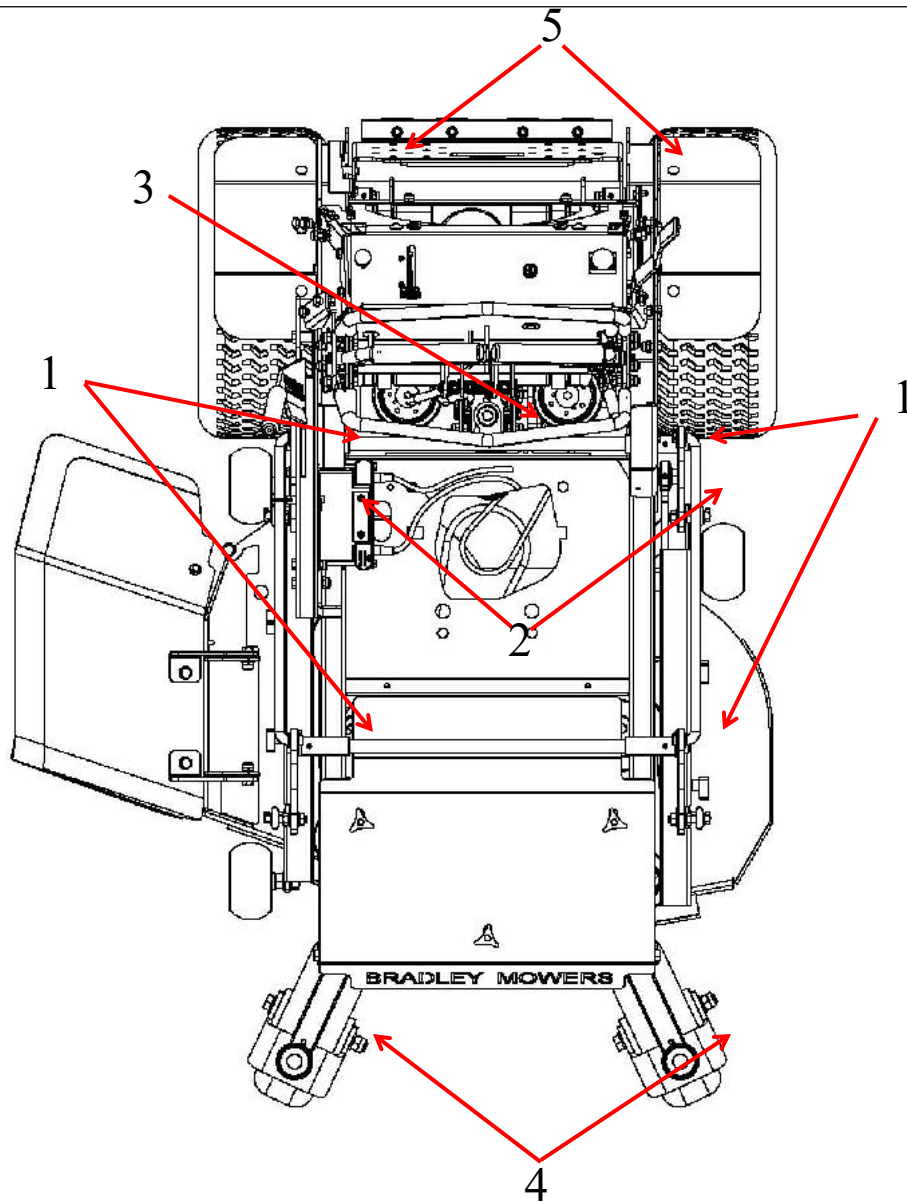
Every 50 hours of operation, lubricate the following points (1-4) with grease:

1. Deck lift pivots (4 points)
2. Pull arm pivots (4 points)
3. Deck idler pivot (1 point)
4. Caster wheel pivots (2 points)

Every 500 hours or once a year:

5. The pedal pivots (2 points)

NOTE ON BLADE SPINDLES — The blade spindles on these machines use a superior sealed bearing that does not require re-lubrication



ENGINE OIL

Do not perform engine maintenance without the engine off, spark plug wires disconnected and PTO disengaged.

AFTER FIRST FIVE (5) HOURS

While the engine is warm:

1. Release the oil drain hose assembly from the engine clip **J**. Lay hose assembly over the frame edge.
2. Remove the screwed plug **D** from the tip of the hose assembly to allow oil to drain from the engine. Dispose of used oil in accordance with local requirements.
3. Clean plug connector and screwed plug **D**. Replace screwed plug back into plug connector. Replace hose assembly back into engine clip.
4. Change oil filter.
5. Fill the crankcase with fresh oil to the full mark. Do not overfill. See engine manual for oil specifications.

DAILY

1. Check oil level with the dipstick.
2. If oil is needed, add fresh oil of proper viscosity and grade. See engine manual for oil specifications. Do not overfill.
3. Replace dipstick before starting engine.

PERIODIC OIL CHANGES

1. See engine manual for oil and filter change intervals after the break-in period .
2. Follow instructions for first oil change, above.



SPARK PLUGS

Remove each plug and check condition.

- Good operating conditions are indicated if the plug has a light coating of grey or tan deposit.
- A white blistered coating indicates overheating. A black coating indicates an “over rich” fuel mixture. Both may be caused by a clogged air cleaner or improper carburetor adjustment.
- Do not sandblast, wire brush or otherwise attempt to repair a plug in poor condition. Best results are obtained with a new plug.
- Set plug gap as specified in engine manual.

FUEL FILTER

An in line fuel filter is located in the fuel supply line. Inspect at every oil change to make sure it is clean and unobstructed. Replace if dirty.

TRANSAXLES

WARNING

Inattention to proper safety, operation, or maintenance procedures could result in personal injury, or damage to the equipment.

Perform transaxle maintenance with the engine off, spark plug wires disconnected and PTO disengaged .

TRANSAXLE FLUID CHANGE

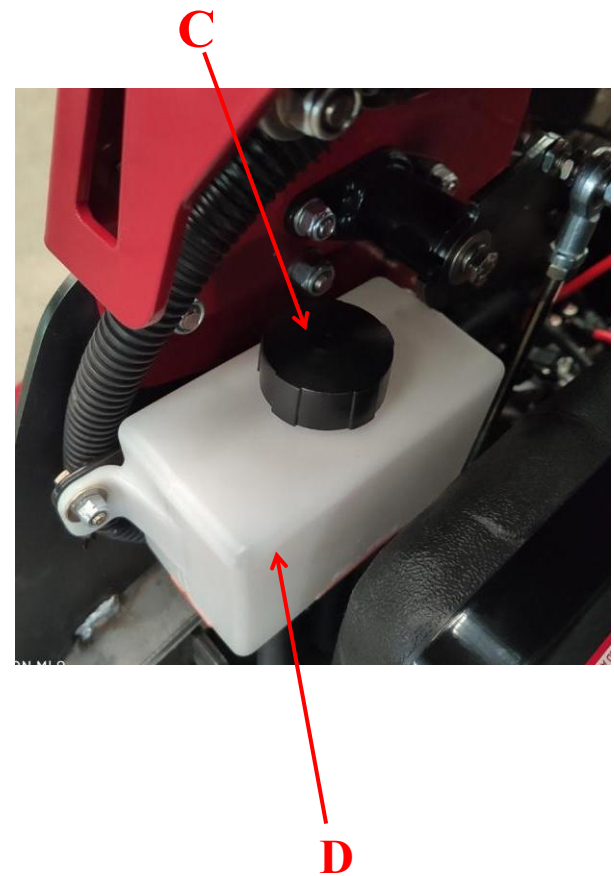
Change the transaxle fluid every 200 hours of operation. It is essential that the exterior of the transaxle be free of debris, prior to fluid maintenance.

1. Remove the three 1/4" filter guard screws and filter guard **A**. Remove the oil filter **B** from the transaxle and discard. Dispose of used oil in accordance with local requirements.
2. Wipe the filter base surface off and apply a film of new oil to the gasket of the new replacement filter. Install the new filter by hand, turn 3/4 to one full turn after the filter gasket contacts the filter base surface.
3. Re-install the filter guard and torque the three screws to 65 in. lbs. each.
4. Remove cap **C**, fill the transaxles through the expansion tank **D** with approximately 2 quarts of SAE 20W-50 engine oil PER TRANSAXLE .

CAUTION

Do not overfill! If you overfill the transaxle while the unit is "cold", it may overflow as it reaches normal operating temperatures. The oil level should not be above the manufacturer's suggestions. The oil level should be filled to the full cold line on the overflow tank. This will allow the space needed for the oil to expand as it warms up.

5. After starting engine, check the fluid level and continue to add oil to overflow tank **D** to fill line on tank.
6. Purge the transaxles, following the purging procedures.



PURGING TRANSAXLES

Due to the effects air has on efficiency in hydrostatic drive applications, it is critical that it be purged from the system.

These purge procedures should be implemented any time a hydrostatic system has been opened to facilitate maintenance or any additional fluid has been added to the system.

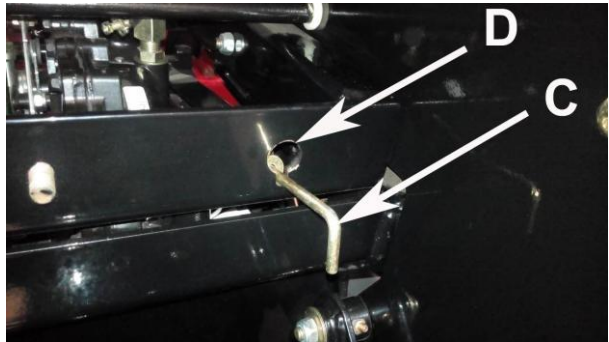
Purging may be required if the unit shows any of the following symptoms:

- Noisy operation.
- Lack of power or drive after short term use.
- High operation temperature, excessive oil expansion.

1. Check the transaxle fluid, fill to proper level, if required. Should be to the Full Cold Line.
2. Raise the drive wheels off the ground. Support unit with Jack stands or other suitable means.
3. Open bypass valves. To open the bypass valves, move the parking brake to any OFF position, then lift and pull bypass control rod **C** through the large opening **D**, until the control rod stop is past the opening. Drop rod **C** into the small opening to lock in place. Repeat for

the other bypass control rod. Start engine, slowly move the control levers in both forward and reverse directions 5 to 6 times. As air is purged from the unit, the oil level will drop.

4. With the bypass valve closed, and the engine running, slowly move the control levers in both forward and reverse directions 5 to 6 times
5. Stop engine. Check the transaxle fluid level, add fluid as required.
6. It may be necessary to repeat steps 3-5 until all the air is completely purged from the system. When the transaxle moves forward and reverse at normal speed, purging is complete.



ENGINE COOLING

Continued operation with a clogged cooling system will cause severe overheating and can result in engine damage.

- Daily: Clean air intake screen **S** on air cooled engines.
- Every 100 hours: Clean cooling fins beneath blower housing **H** with reference to information in the engine manufacturer's manual.

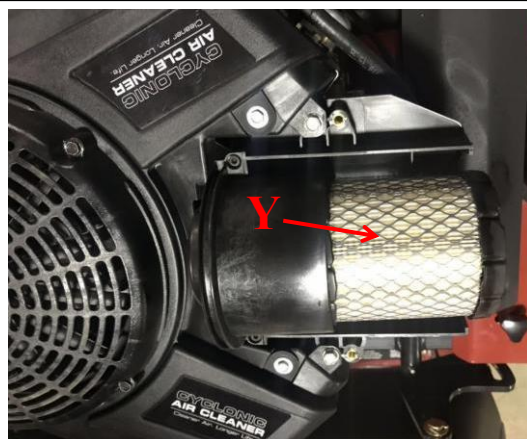


HEAVY DUTY CYCLONIC AIR CLEANER

Clean and replace the air cleaner element as specified in the service chart. Uneven running, lack of power or black exhaust fumes may indicate a dirty air cleaner.

To replace air cleaner elements:

1. Remove end cover **X** and remove existing cleaner elements.
2. Insert new elements **Y** and replace cover.



SPECIFIC TORQUES

| | |
|-----------------------------|----------------------------------|
| BLADE BOLTS | 110 FT-LBS(150 Nm) |
| WHEEL LUG NUTS | 75-100 FT-LBS(102-136 Nm) |
| CLUTCH MOUNTING BOLT | 50 FT-LBS(68 Nm) |
| TRANSAXLE PULLY BOLT | 28-41 FT-LBS(38-56 Nm) |
| TRANSAXLE DRAIN PLUG | 15-20 FT-LBS (20-27 Nm) |
| TRANSAXLE FILTER | 8-12FT-LBS(11-16 Nm) |

CLEANING MACHINE

Clean the machine after use. Compressed air is recommended. Do not use a pressure washer. The machine will run cooler and last longer if kept free of clippings and other debris. A clean machine also reduces the risk of fire due to accumulation of combustible debris and chaff.

Brush or blow clippings and debris off the cutter-deck and engine deck. Clippings and debris should be kept from accumulating around the exhaust system and under the exhaust guards. This can be done by using compressed air. DO NOT use a pressure washer.

WASHING MACHINE

CAUTION: Improperly washing a machine can cause water to enter bearings and other components. This can greatly reduce component life

- Do not use a pressure washer. Do not direct water at bearings or seals. High pressure water can blow past seals and enter sealed bearings.
- Allow the machine to cool down before washing. Water on a warm machine can be sucked into sealed bearings as they cool.
- Avoid getting electrical connections wet. Water can cause electrical faults and corrosion of electrical components.

BLADE REMOVAL

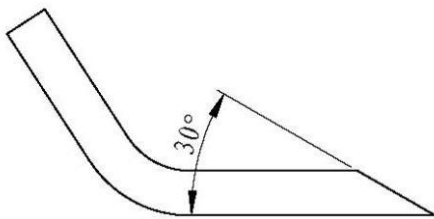
Follow these instructions to prevent injury during blade removal :

1. Loosen with box wrench or socket and long breaker bar. To gain additional leverage, slip long pipe or thick-walled tube over breaker bar or wrench.
2. Clamping the spindle with a wrench as shown, to prevent blade from turning when loosening.
3. Wear thickly padded gloves. Keep hands clear of blade path. Blades may rotate when bolt releases.

SHARPENING

Blades may be sharpened by filing or grinding.

- Inspect blades before sharpening.
- Replace bent or cracked blades.
- Replace blades when the lift portion has worn thin.
- Maintain cut angle at 30°.
- Do not overheat blades when sharpening.
- Always use Bradley blades. Use of another manufacturer's blades may be dangerous.



BLADE BALANCE

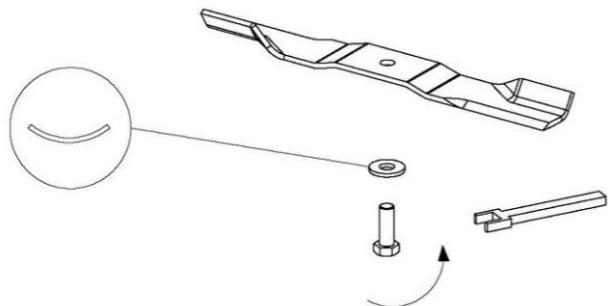
Blade balance must be maintained at 5/8 oz-in (1 9.4 g-cm) or less. Failure to keep blades balanced causes excess vibration, wear, and shortened life of most components of the machine.

To balance a blade:

1. Sharpen blade first.
2. Balance the blade at the center.
3. Attach a 1/8 oz (3.9 g) weight at a distance 5" (127 mm) from center on the light end. This should make the light end the heavy end :
 - If it does, the blade is balanced .
 - If does not, file or grind the heavy end until the addition of the weight makes the light end the heavy end.

BLADE INSTALLATION

1. Wear thickly padded gloves to prevent cuts from the sharp blade.
2. Insert the blade bolt, in order, through the spring washer (cup side toward the blade, as shown), the plain washer, the blade, and the blade spacer.
3. Install assembly on the blade spindle.
4. Torque the blade bolt to 110 ft-lbs.



BELTS

All belts are tensioned by spring loaded idlers. No adjustment is required.

DECK LEVELING

The deck roller needs to be installed at the top hole

1. Park the machine on a smooth, level surface, pull the cut lever **E** to the highest slot.
2. Place two 1-3/16" block under the rear deck and a 1-1/16" blocks under the front deck .
3. Remove the pin **B** to the lowest cutting height, and then lower the deck onto the blocks.

So that the deck top is pitches forward 1/8".

4. Loosen nuts on bolts **G**. Move bolts in slot to remove slack in chain.

5. Tighten nuts on bolts **G**.

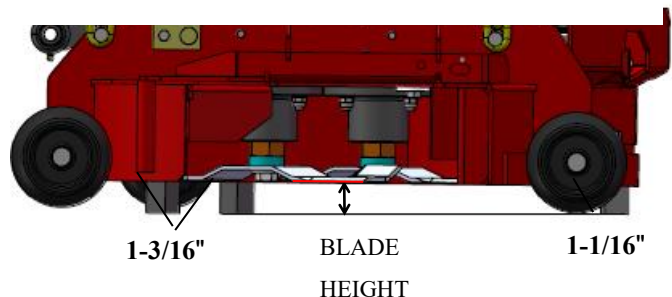
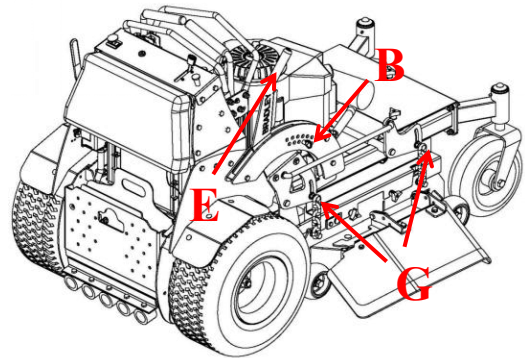
NOTE: The front and rear of the deck are at different heights.

A 1/8" forward pitched deck provides the best horsepower.

A level deck provides the best quality of cut.

A 1/8" rearward pitched deck provides the best striping.

Certain grass types and conditions may vary.



CUTTING HEIGHT

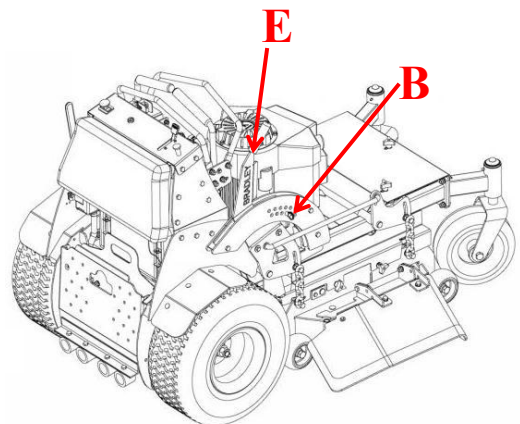
The cutting height is set by moving height of cut pin **B** to the hole designated for the height of cut desired.

To change the height of cut:

1. Lift the deck to the highest position using the lift handle **E**.
2. Move pin **B** to the selected hole.
3. Lower the deck until the lift handle **E** is stopped by the pin.

NOTES

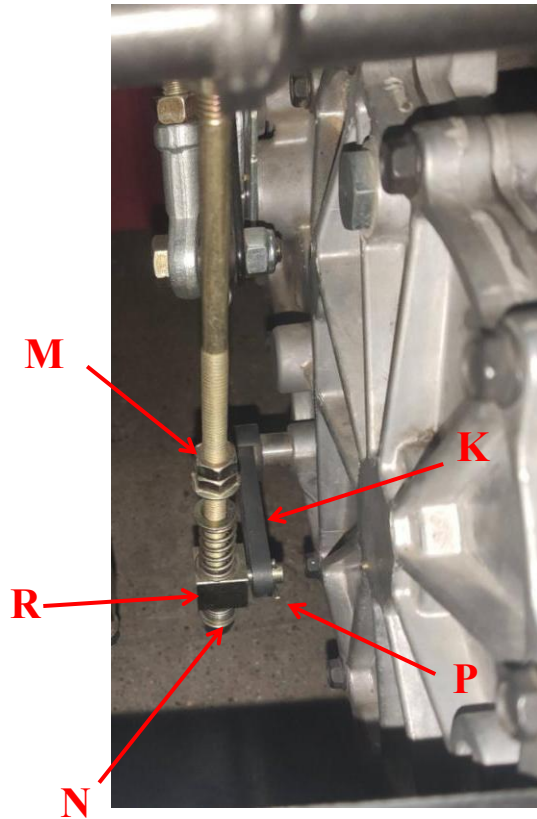
- Height of cut may vary due to the amount of tread on the tires, tire diameter or inflation pressure.
- For best results, adjust the deck rollers for the height of cut to be used (see below).



PARKING BRAKE

NOTE: There are 2 brakes, 1 on each transaxle. The parking brake should keep the machine from Moving . To check the parking brake, park the machine on a level surface, open the bypass valves (See purging transaxles section for instruction) and set the parking brake to ON. Attempt to move the machine forward and backward by pushing it. If the machine moves, adjust the parking brake linkage as follows:

1. Move the machine to a flat horizontal surface.
2. Move the parking brake handle to the OFF position.
3. Insure that the brake links **K** are rotated toward the front of the machine. If not, remove cotter pin **P** from each brake link **K** and brake rod **R**. Slide brake rod **R** out of each brake link **K**. Reinsert rod **R** into each link **K** and secure with cotter pin **P**.
4. Loosen nut **M** and tighten brake nut **N** as needed. Then tighten nut **M**.
5. Retest to insure the machine does not move.



Note: Use belts designed for commercial mowers.

CUTTERDECK BELT

1. Remove center, left and right belt guards.
2. Set the cutterdeck in a middle height-of-cut position.
3. Loosen bolt on belt guide so belt guide can be moved to remove the belt.
4. Loosen nut **W** and nut **Q** to back tensioning idler off to remove belt from idler. Remove belt from cutterdeck pulleys.
5. Remove belt from clutch pulley.
6. Install the new belt by performing these steps in reverse order.
7. Cutterdeck spring will require tension adjustment after belt installation. Adjust nut **W** and nut **Q** to gain the appropriate tension.

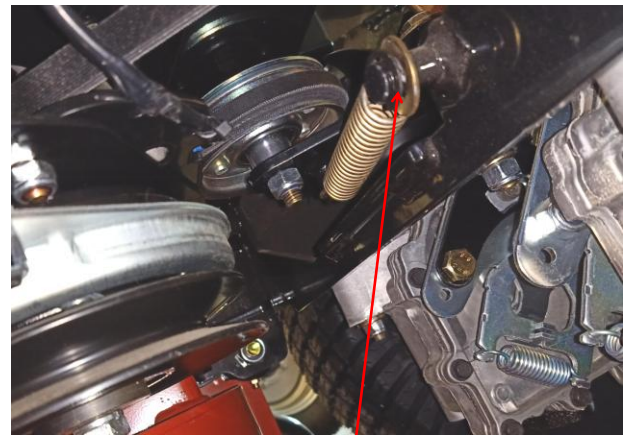


W

Q

TRANSAXLE DRIVE BELT

1. Remove engine-cutterdeck belt. (See cutterdeck belt above)
 2. Loosen Spilt Washer **Z** to remove the transaxle drive belt.
 3. Install a new transaxle drive belt by performing these steps in reverse order.
- NOTE:** Inspect the fans. Replace if worn or damaged.
4. Reinstall cutterdeck belt and guards.



Z

POWER UNITS

ENGINES:

Construction: Aluminum block with cast-in cast iron sleeves. Aluminum head.

Configuration: 4-stroke, vertical shaft, V-twin cylinder, overhead valve, air-cooled

DRIVE SYSTEM:

Transaxles: Dual Hydro Gear ZT3100 Commercial Duty Hydrostatic transaxles (10cc Pumps)

Turn Radius: True Zero

OPERATOR PRESENCE

INTERLOCK SYSTEM:

Start Operation

For the engine to crank, the parking brake must be ON, the PTO (blades) OFF. Stand on the operator platform and check, one by one, if the engine will crank with the parking brake OFF or the PTO (Blades) ON.

Run Operation

In order for the engine to run, the operator must either be standing on the platform, or walking behind the unit with the platform up, the parking brake in the OFF position and the LH control handle held down out of the neutral position. The engine may also run if the parking brake is in the ON position, the LH control handle is in the NEUTRAL position rotated up, and the PTO (blades) are OFF.

To check:

1. Start the engine and run at 1/2 throttle
2. With the LH control handle in the NEUTRAL position rotated up, move the parking brake lever to OFF and turn the PTO (Blades) ON. Each check should kill the engine after 1/2 second delay. (A 1/2 second delay is built into the system to prevent engine cut-out when traversing rough terrain.)

Repair machine before using if the Operator Presence Interlock System does not operate correctly in start or run. Contact your authorized Bradley dealer.

NET WEIGHT:

36SC:811lbs (368 kg)

TOTAL WEIGHT:

36SC:966lbs (438kg)

CONTROLS:

Throttle; choke; power takeoff (PTO) clutch switch; control lever; parking brake lever; lift lever

FUEL SYSTEM:

One tank in the control tower with total capacity 5 gallons (19 liters). Replaceable fuel Filter

MAXIMUM GROUND SPEEDS:

Forward: ≈ 10 mph (16km/h)
Reverse: ≈ 6 mph (10km/h)

WHEELS&TIRES:

Drive wheels:

36SC: 20X 8-10 4-Ply Turf
Turf Tires

Casters:

36SC: 11 X4.0-5 tires

Pressure: Rear tires 20 p.s.i.

Front tires 40 p.s.i.

Bradley Stand-On Compact Mower Owner's Manual

| ENGINES | |
|-----------------|-------------------------------|
| MODEL NUMBER | 36SC |
| MANUFACTURER | BRIGGS & STRATTON |
| MODEL | 25HP |
| CYLINDERS | 2 |
| COOLING | Air |
| BORE/STROKE | 3.12×2.89" (79.25×73.41mm) |
| DISPLACEMENT | 44.18 cu.in (724 cc) |
| OUTPUT TORQUE | 39.84 ft-lb (54J) @2400rpm |
| LUBRICATION | FULL PRESSURE |
| GOVERNOR | Mechanical |
| AIR FILTER | Integrated Cyclonic |
| IGNITION SYSTEM | Electronic |
| CHARGING SYSTEM | 16 amp,regulator |
| BATTERY | BCI group U1 |
| FUSES | Two,20 amp blade |

| CUTTING DECK | |
|---------------------|---|
| MODEL NUMBER | 36SC |
| TYPE | Side Discharge |
| CUTTING WIDTH | 36"(91 cm) |
| WIDTH(CHUTE UP) | 39"(99 cm) |
| WIDTH | 49"(124.5cm) |
| BLADE | High lift |
| NUMBER OF BLADES | 2 |
| BLADE LENGTH | 18"(45cm) |
| BLADE MOUNTING HOLE | 5/8 " |
| BLADE THICKNESS | .205"(5.2 mm) |
| TIP SPEED | 18480 ft/min 5633m/min @3800 Engine RPM |
| ANTI-SCALP ROLLERS | 3 |

CONSTRUCTION:

Fabricated and welded 7-gauge,double-layer steel top with 4-gauge guard.Full floating design.

CUTTERDECK DRIVE SYSTEM:

Electric clutch/brake drives belt directly from engine to cutterdeck. No twists in drive belt. Torque information located on page 16.

SPINDLES:

Top mounted and maintenance free,with1 " shaft in precision machined,steel housing

CUTTING HEIGHT & PRODUCTION:

Height: Lever allows easy setting of cut heights from 1-1/2 " to 4-1/2 " in 1/4 " increments.

Unpacking instruction

1. Wrench: use two 16mm wrenches, remove the packing rack.



2. Remove the mower from its plastic wrap.

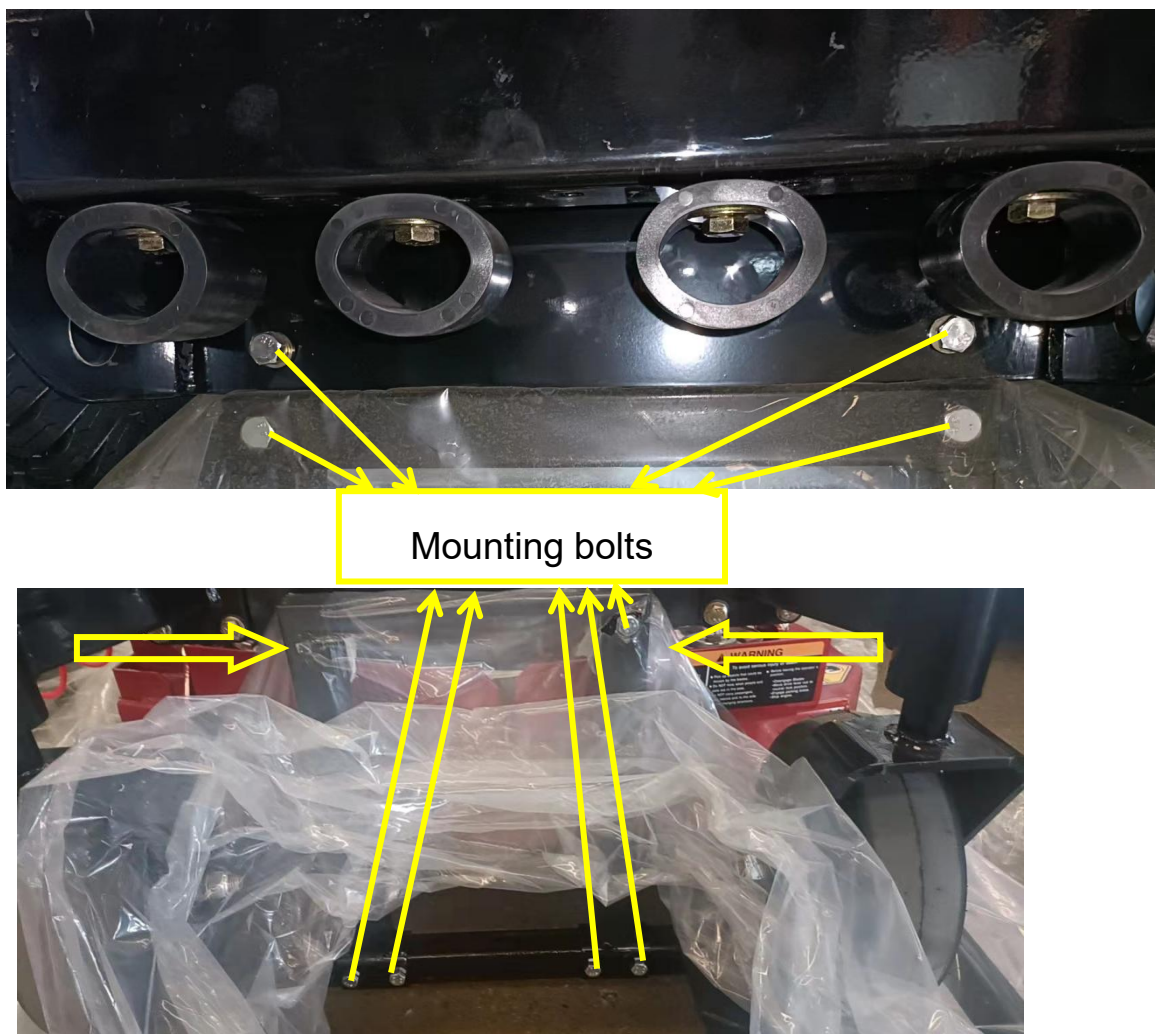


3. Cut off the fixing wires.

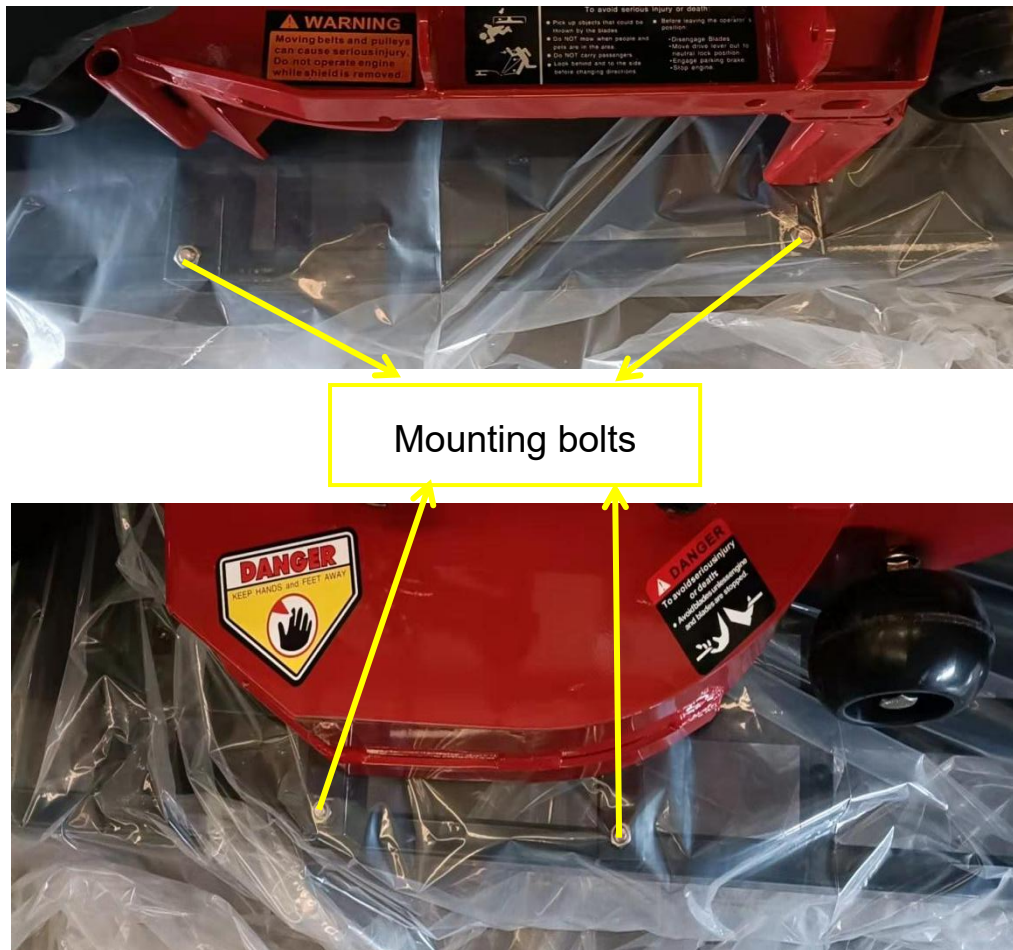


4. Remove the mounting bolts and then take off the front support, as shown in pic A& B

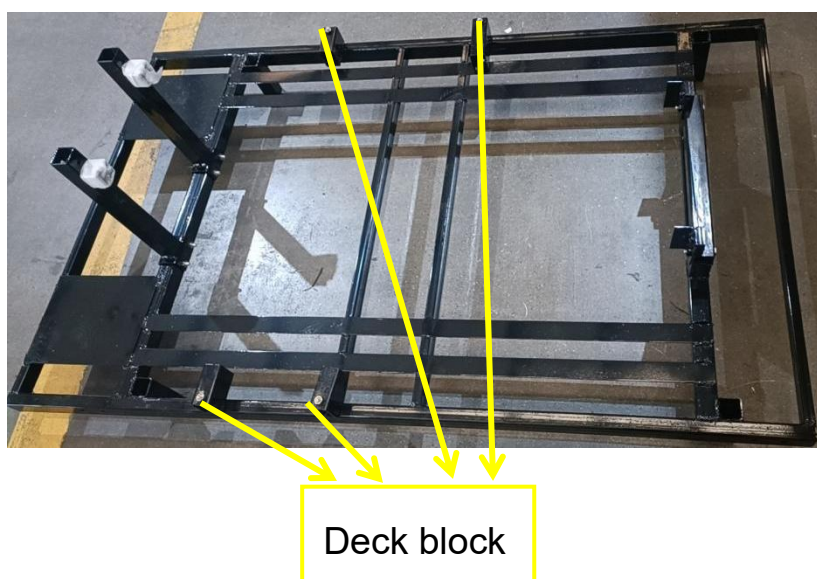
Pic A:



Pic B:

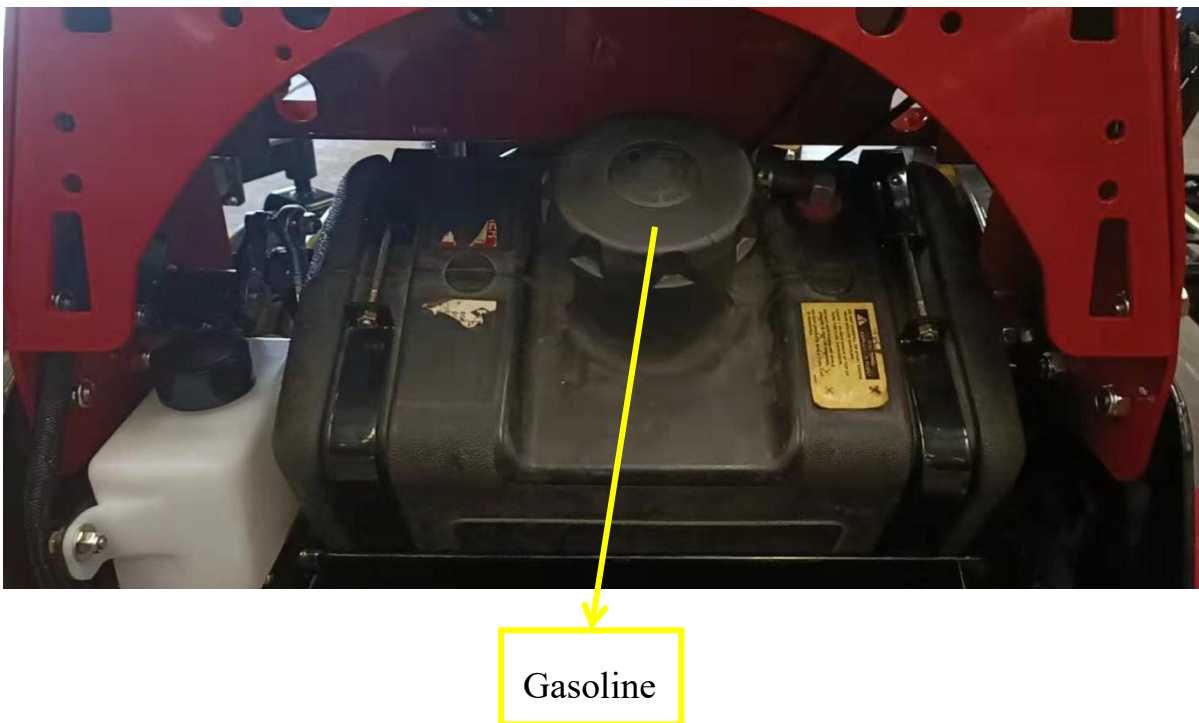
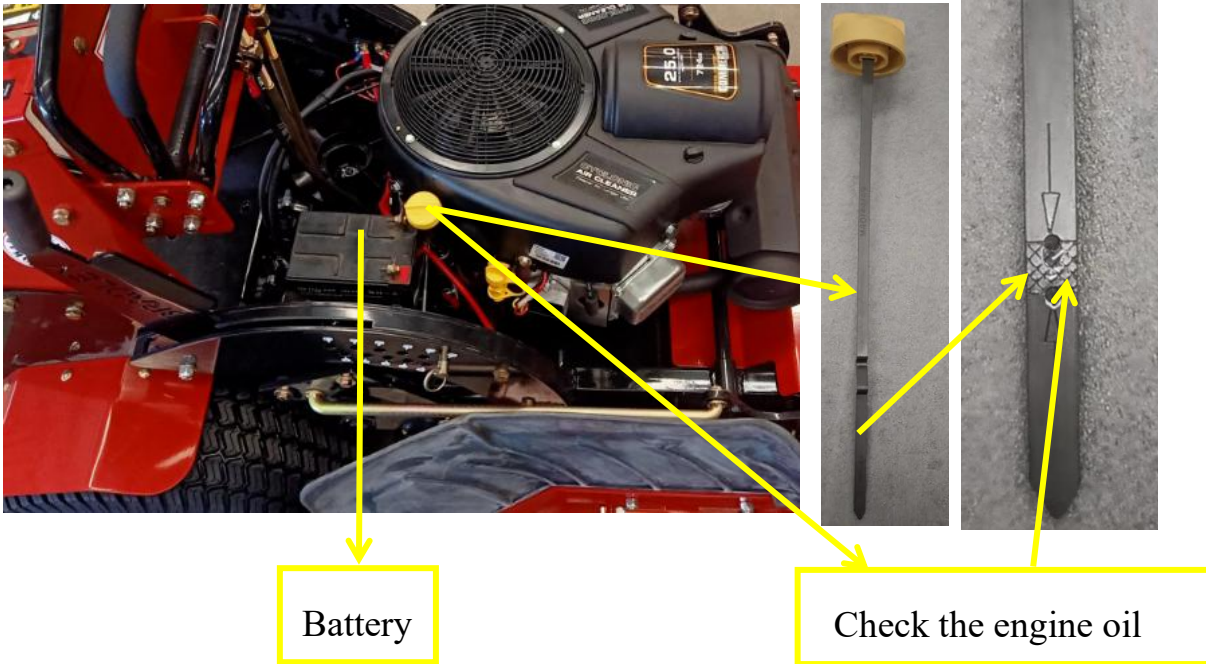


Loosen the bolts so you can take off the deck blocks to avoid scratching the tire

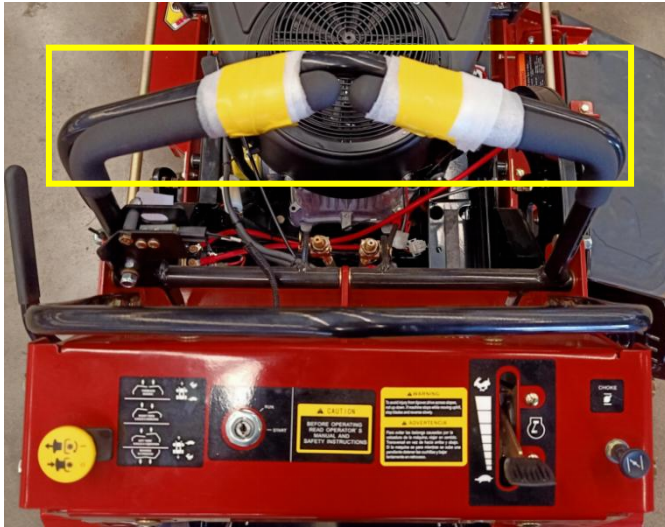


5. Hook up battery cables

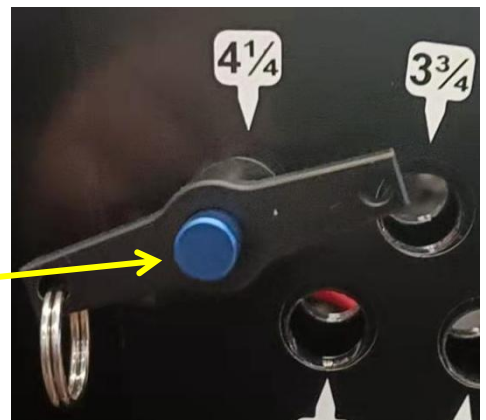
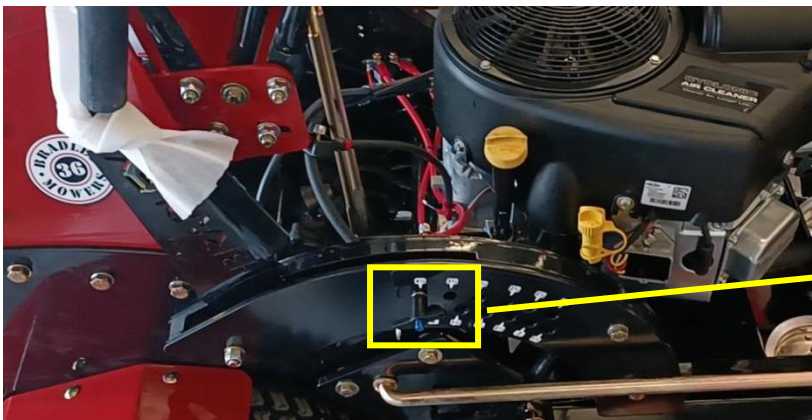
Add engine oil and gasoline under engine instruction.



6.Remove the handle fixing strap



7.Push forward the mower until the back wheel fully contacts with the track
and then lift the mower deck to transportation mode

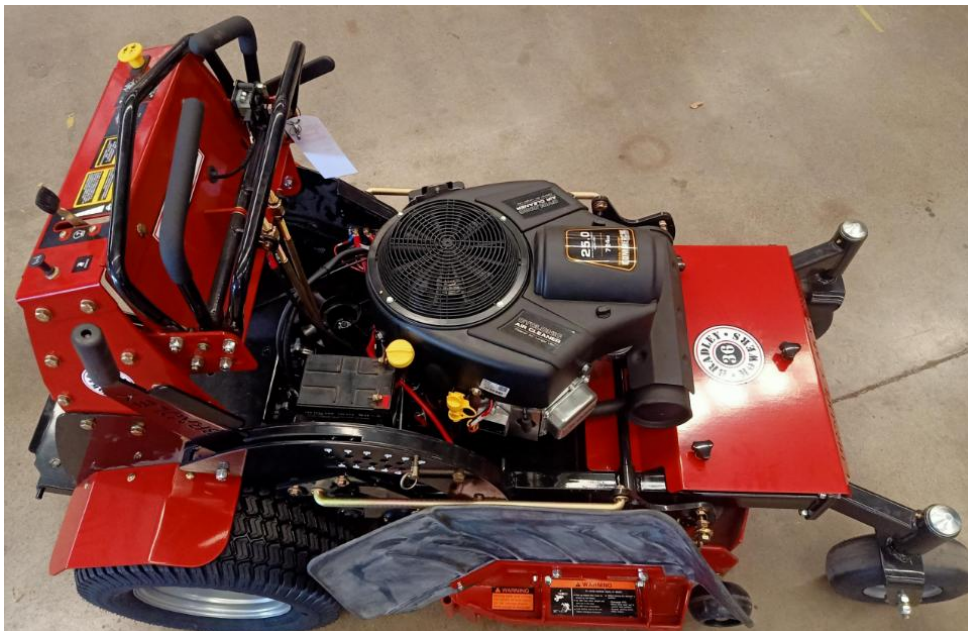


Bradley Stand-On Compact Mower Parts List

8. Check the mower to make sure it is not in neutral and then start the mower, release the parking lever, drive the mower slowly from the crate.

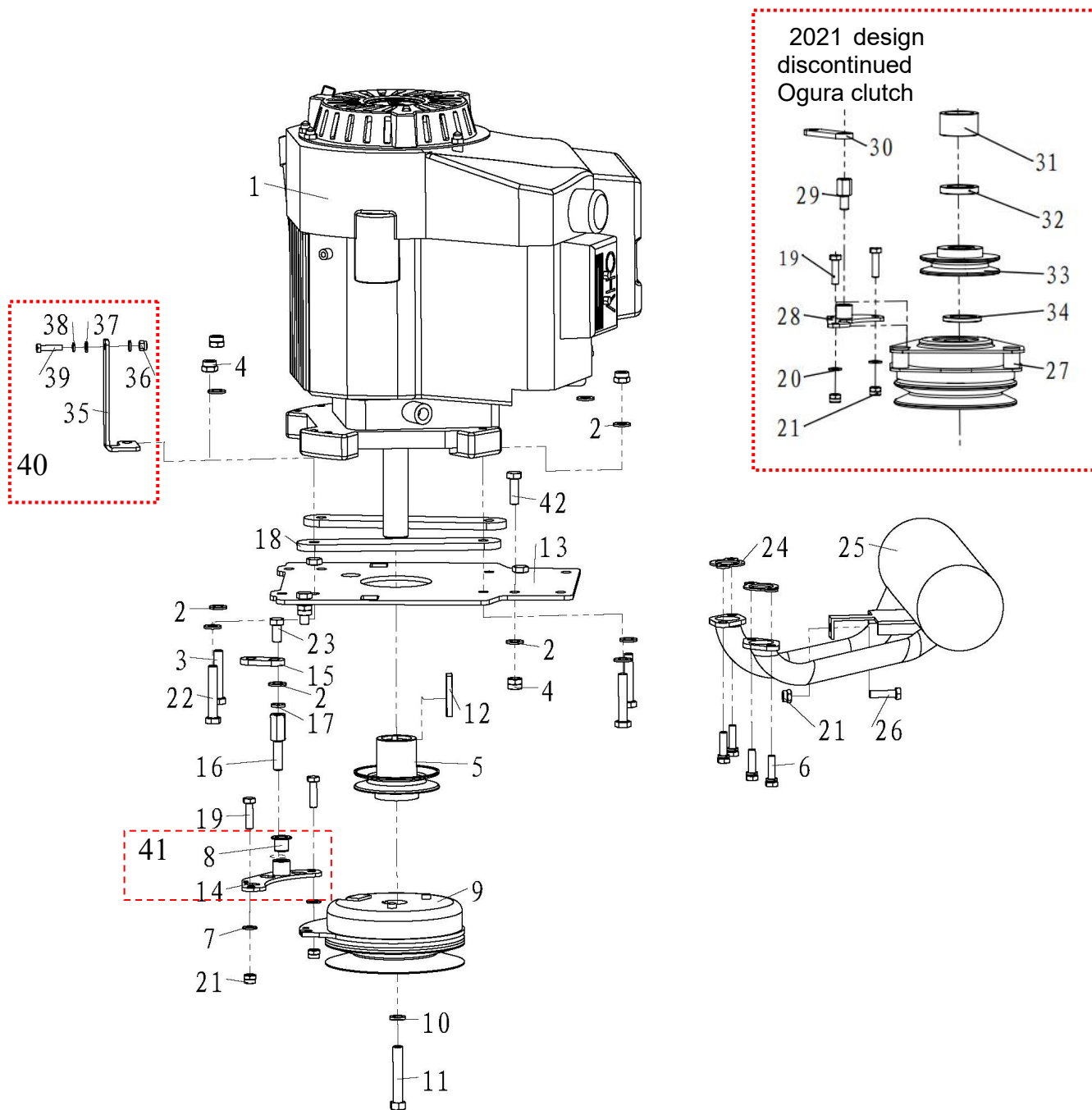


When driving the mower off , notice the base of the crate to avoid trip over



PARTS SECTION

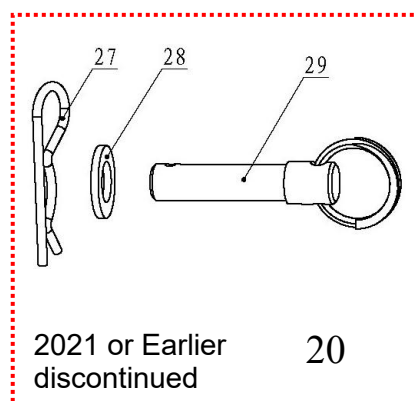
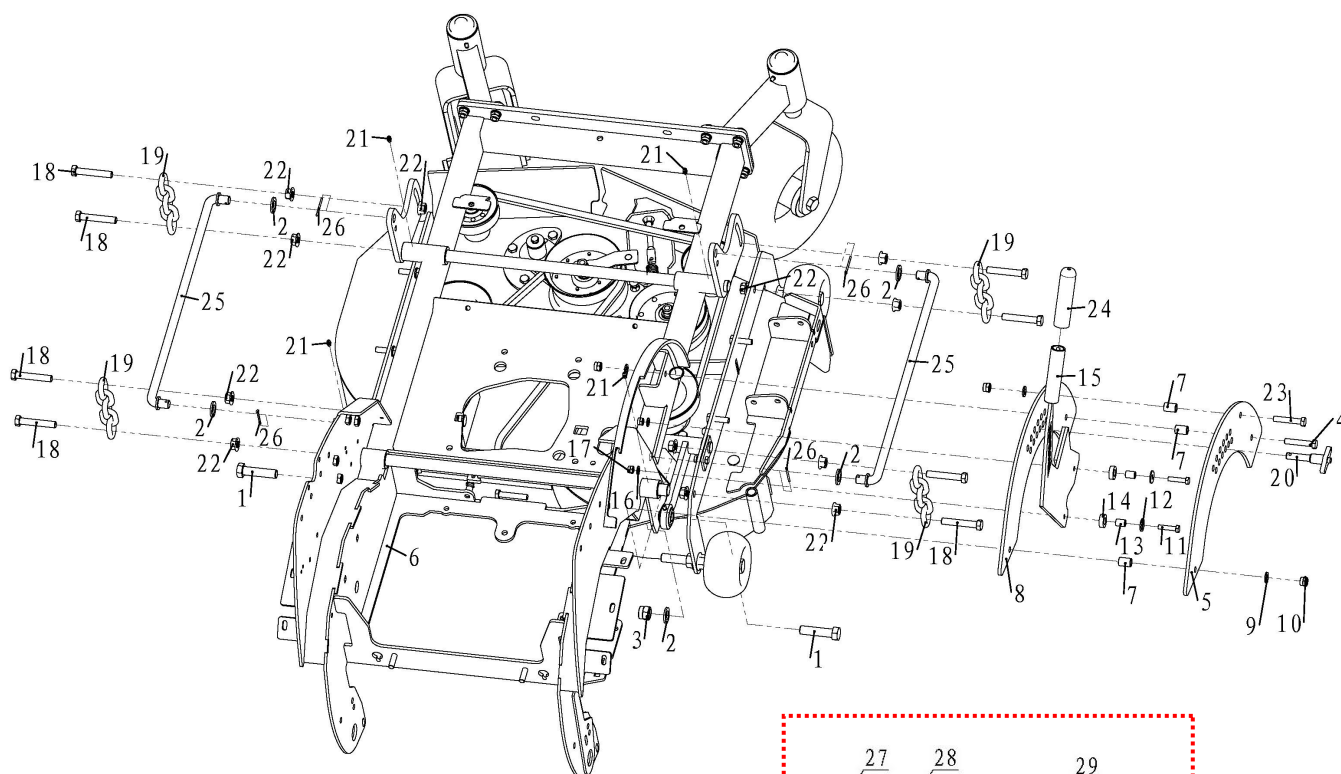
Engine assembly



Engine assembly

| ITEM | PART NO. | DESCRIPTION | QTY |
|--------------------------------------|--------------|---|-----|
| 1 | 601-298 | B&S ENGINE 25HP-CT | 1 |
| 2 | 600-301-0010 | Washer 10 GB95 | 12 |
| 3 | 600-001-1060 | Bolt M10-1.5X60 GB5782 | 1 |
| 4 | 600-201-0010 | Nut M10 GB889 | 8 |
| 5 | 603-099 | Transmission pulley | 1 |
| 6 | 200-037 | Muffler bolt 5/16-18 | 4 |
| 7 | 336-239 | Plain Washer 3*8.5 id *20 od | 2 |
| 8 | 604-044 | Nylon sleeve | 1 |
| 9 | 604-029 | Electric clutch(Warner) | 1 |
| 10 | 200-343 | Lock Washer 7/16 | 1 |
| 11 | 100C-002 | Engine bolt | 1 |
| 12 | 601-016 | Flat key 6.35*6*50 | 1 |
| 13 | 603-045 | Engine assemble plate (Ogura clutch) | 1 |
| | 603-126 | Engine assemble plate (Warner clutch) | 1 |
| 14 | 603-096 | Electromagnetic clutch stop (Warner clutch) | 1 |
| | 603-046 | Electromagnetic clutch stop (Ogura clutch) | 1 |
| 15 | 603-097 | Electric clutch fix plate | 1 |
| 16 | 603-098 | Electric clutch stop rod | 1 |
| 17 | 600-305-0010 | Lock Washer 10 GB93 | 1 |
| 18 | 601-014 | Engine pad | 2 |
| 19 | 600-002-0820 | Bolt M8-1.25X20 GB5783 | 2 |
| 20 | 600-301-0008 | Washer 8 GB95 | 2 |
| 21 | 600-201-0008 | Nut M8 GB889 | 3 |
| 22 | 600-001-1050 | Bolt M10-1.5X50 GB5782 | 3 |
| 23 | 600-002-1020 | Bolt M10-1.5X20 GB5783 | 1 |
| 24 | 601-208 | Muffler heat-resistant pad | 2 |
| 25 | 601-001 | Muffler-BSEngine | 1 |
| 26 | 600-002-0816 | Bolt M8-1.25X16 GB5783 | 1 |
| 35 | 601-295 | Negative line mounting plate | 1 |
| 36 | 600-201-0006 | Nut M6 GB889 | 1 |
| 37 | 600-301-0006 | Plain Washer 6 GB95 | 2 |
| 38 | 600-305-0006 | Lock Washer 6 GB93 | 1 |
| 39 | 600-002-0620 | Hexagon Bolt M6-1X20 GB5783 | 1 |
| 40 | 601-302 | Negative line mounting plate assembly | 1 |
| 41 | 603-107 | Clutch stop plate assembly | 1 |
| 42 | 600-001-1030 | Bolt M10-1.5X30 GB5783 | 4 |
| Ogura clutch kit discontinued | | | |
| 27 | 601-012 | Electric clutch (Ogura clutch) | 1 |
| 28 | 603-046 | Electric clutch stop plate assembly | 1 |
| 29 | 603-048 | Electric clutch stop rod | 1 |
| 30 | 603-047 | Electric clutch fix plate | 1 |
| 31 | 601-017A | Transmission pulley washer2 | 1 |
| 32 | 601-018 | Transmission pulley washer III | 1 |
| 33 | 601-011 | Transmission pulley | 1 |
| 34 | 603-044 | Transmission pulley washer II | 1 |

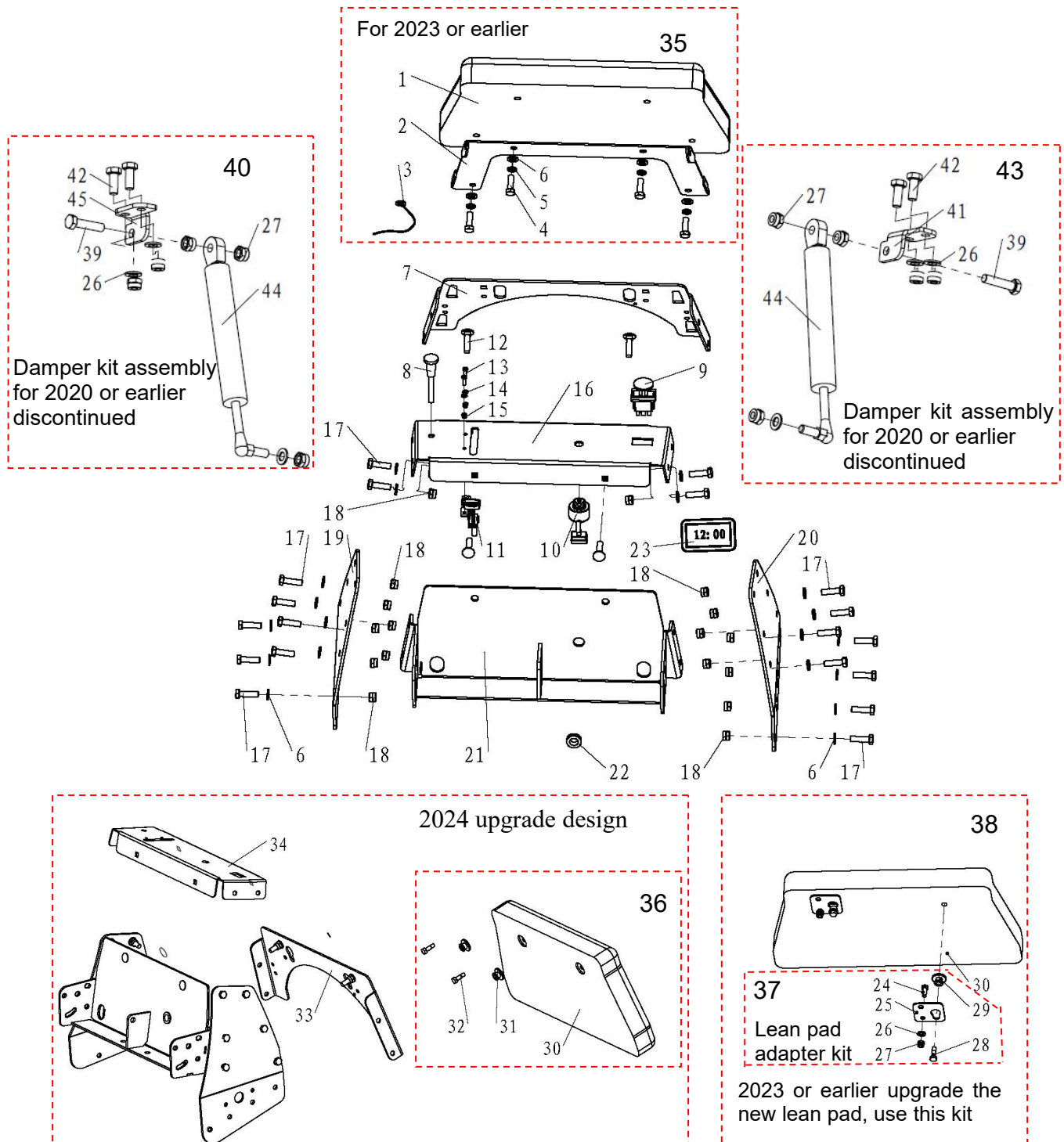
Lifting assembly



Lifting assembly

| ITEM | PART NO. | DESCRIPTION | QTY |
|------|--------------|--|-----|
| 1 | 600-002-1650 | Bolt M16-2X50 GB5783 | 2 |
| 2 | 600-301-0016 | Washer 16 GB95 | 6 |
| 3 | 600-201-0016 | Nut M16 GB889 | 2 |
| 4 | 600-001-1055 | Bolt M10-1.5X55 GB5782 | 2 |
| 5 | 601-064 | Index plate front panel | 1 |
| 6 | 603-013 | Frame | 1 |
| 7 | 601-063 | Lifting bushing | 3 |
| 8 | 601-062 | Index plate welding assembly | 1 |
| 9 | 600-301-0010 | Washer 10 GB95 | 3 |
| 10 | 600-201-0010 | Nut M10 GB889 | 3 |
| 11 | 600-002-0840 | Bolt M8-1.25X40 GB5783 | 2 |
| 12 | 600-302-0008 | Washer 8 GB96 | 2 |
| 13 | 601-056 | Lifting handle bushing | 2 |
| 14 | 601-057 | Lifting handle rubber sleeve | 2 |
| 15 | 603-014 | Lifting handle welding assembly | 1 |
| 16 | 600-301-0008 | Washer 8 GB95 | 2 |
| 17 | 600-201-0008 | Nut M8 GB889 | 2 |
| 18 | 600-002-1250 | Bolt M12-1.75X50 GB5783 | 8 |
| 19 | 603-015 | φ10 chain | 4 |
| 20 | 601-271 | Safety pin upgrade design | 1 |
| | 601-282 | Safety pin assembly for 2021 or earlier discontinued | 1 |
| 21 | 600-901-0006 | Grease fitting M6*1 GB1152 | 4 |
| 22 | 600-202-0012 | Nut M12 QC864 | 16 |
| 23 | 600-001-1050 | Bolt M10-1.5X50 GB5782 | 1 |
| 24 | 601-058 | Handle sleeve | 1 |
| 25 | 601-054 | Lifting rod welding part | 2 |
| 26 | 600-403-0332 | Cotter pin 3.2*32 | 4 |
| 27 | 601-061 | Φ3 pin roll | 1 |
| 28 | 600-301-0012 | Washer 12 GB95 | 1 |
| 29 | 601-065 | Safety pin | 1 |

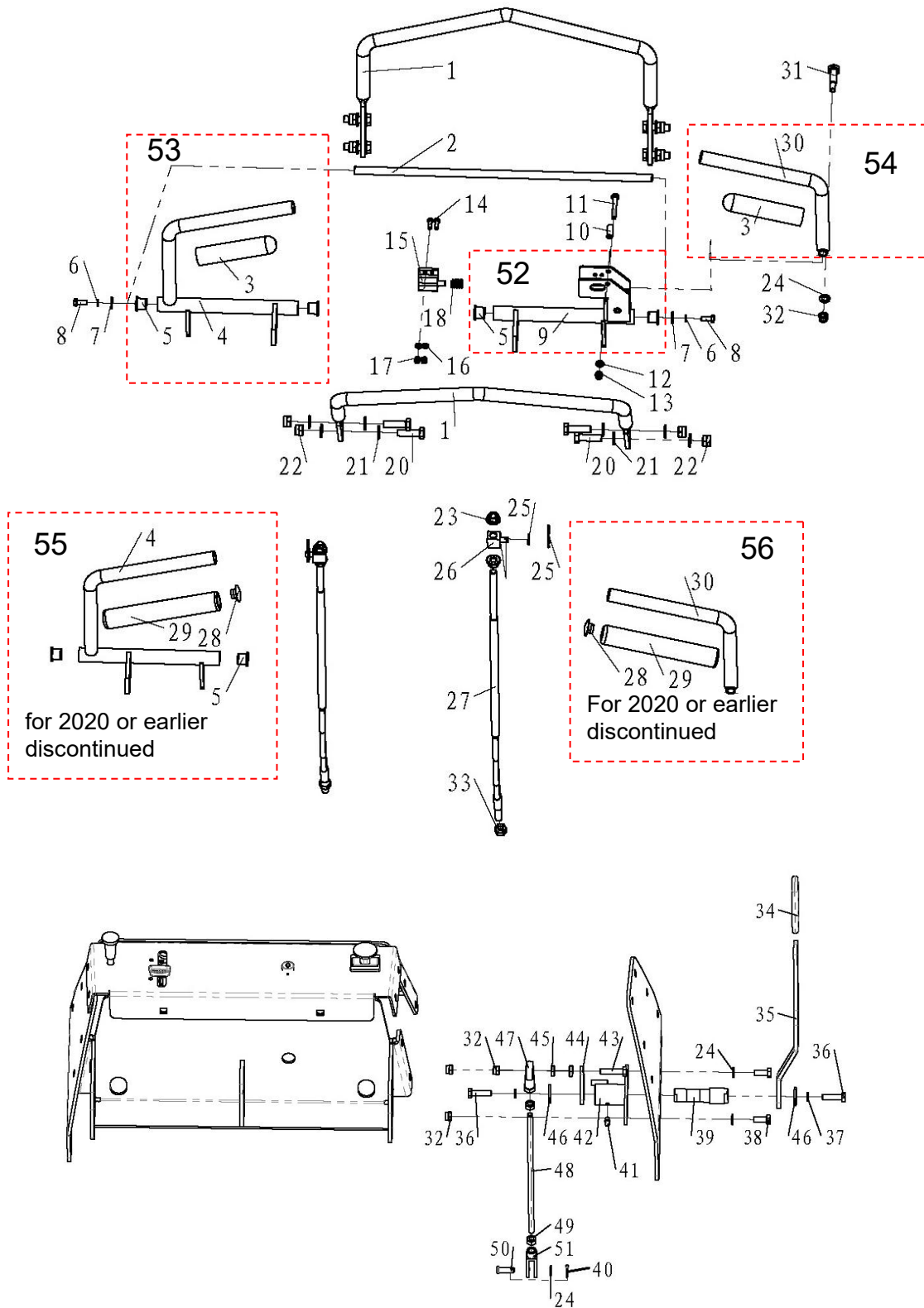
Dashboard plate assembly



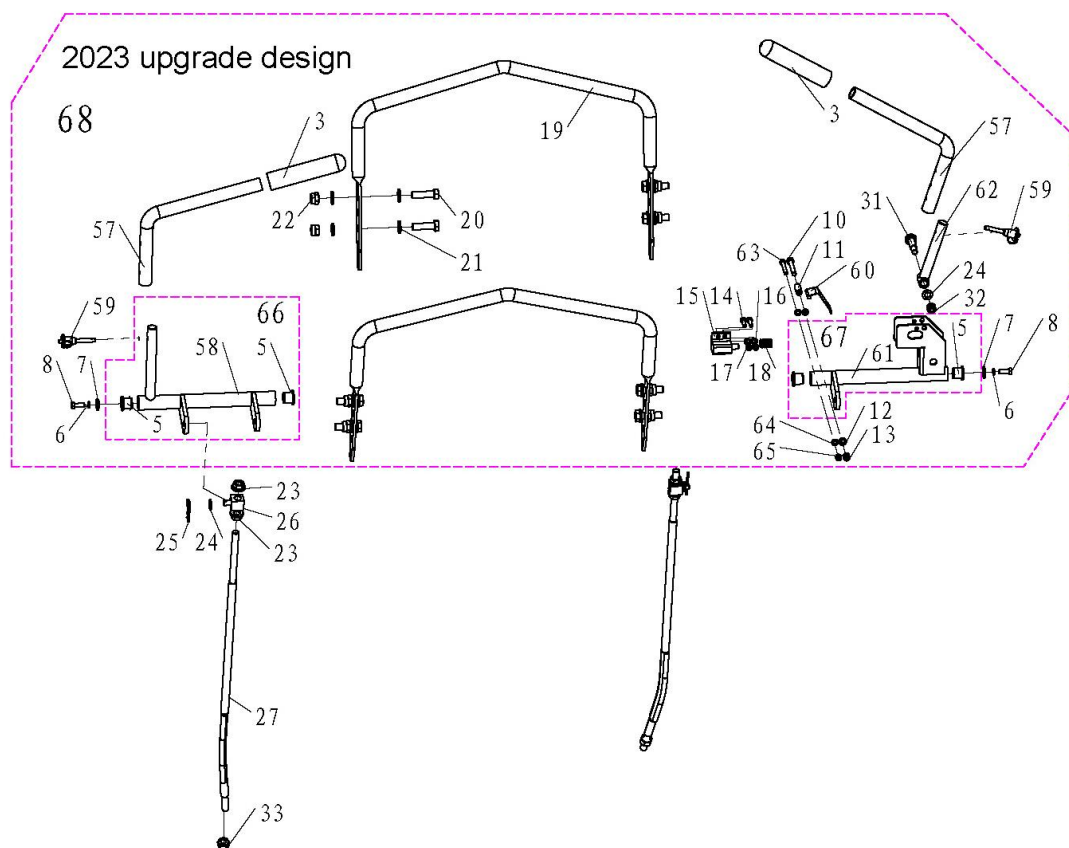
Dashboard plate assembly

| ITEM | PART NO. | DESCRIPTION | QTY |
|------|----------------|---|-----|
| 1 | 603-025 | Lean Pad | 1 |
| 2 | 603-026 | Lean pad assembly plate | 1 |
| 3 | 601-233 | Lean pad cable | 1 |
| 4 | 600-002-1030 | Bolt M10-1.5X30 GB5783 | 4 |
| 5 | 600-305-0010 | Lock washer 10 GB93 | 4 |
| 6 | 600-301-0010 | Washer 10 GB95 | 23 |
| 7 | 603-027 | Lean pad hanging plate | 1 |
| 8 | 603-030 | Choke cable assembly | 1 |
| 9 | 601-161 | PTO switch | 1 |
| 10 | 700-137B | Switch & Key | 1 |
| 11 | 603-032 | Throttle cable assembly | 1 |
| 12 | 600-003-1025 | Bolt M10-1.5X25 GB801 | 4 |
| 13 | 600-101-0516 | Screw M5-0.8X16 GB818 | 2 |
| 14 | 600-301-0005 | Washer 5 GB95 | 2 |
| 15 | 600-201-0005 | Nut M5 GB889 | 2 |
| 16 | 603-031 | Front panel | 1 |
| 17 | 600-002-1025 | Bolt M10-1.5X25 GB5783 | 19 |
| 18 | 600-201-0010 | Nut M10 GB889 | 19 |
| 19 | 603-033 | Right connecting plate | 1 |
| 20 | 603-034 | Left connecting plate | 1 |
| 21 | 603-035 | Front panel connecting plate assembly | 1 |
| 22 | 601-165 | Wiring protect rubber ring | 1 |
| 23 | N110-0100-0071 | Hour meter | 1 |
| 24 | 600-101-0825 | Bolt M8-1.25X25 GB818 | 2 |
| 25 | 603-118 | Foam pad connect board | 2 |
| 26 | 600-301-0008 | Washer 8 GB95 | 2 |
| 27 | 600-201-0008 | Nut M8 GB889 | 2 |
| 28 | 603-117 | Foam pad fix bolt | 2 |
| 29 | 603-116 | Lean pad mounting sleeve | 2 |
| 30 | 603-110 | Upgrade lean pad | 1 |
| 31 | 601-296 | Lean pad mounting sleeve | 2 |
| 32 | 601-297 | Lean pad fix bolt | 2 |
| 33 | 603-114 | Lean pad hanging plate | 1 |
| 34 | 603-115 | Front panel | 1 |
| 35 | 603-041 | Lean Pad assembly | 1 |
| 36 | 603-111 | Upgrade lean pad assembly | 1 |
| 37 | 603-130 | Lean pad adapter kit | 1 |
| 38 | 603-127 | Lean Pad assembly (for 2023 or earlier) | 1 |
| 39 | 600-002-0840 | Bolt M8-1.25X40 GB5783 | 2 |
| 40 | 601-082a | Right damper kit assembly | 1 |
| 41 | 603-029 | Damper fix plate Left | 1 |
| 42 | 600-002-0825 | Bolt M8-1.25X25 GB5783 | 4 |
| 43 | 601-081a | Left damper kit assembly | 1 |
| 44 | 336-245 | Damper | 2 |
| 45 | 603-028 | Damper fix plate Right | 1 |

Handle controls assembly



Handle controls assembly

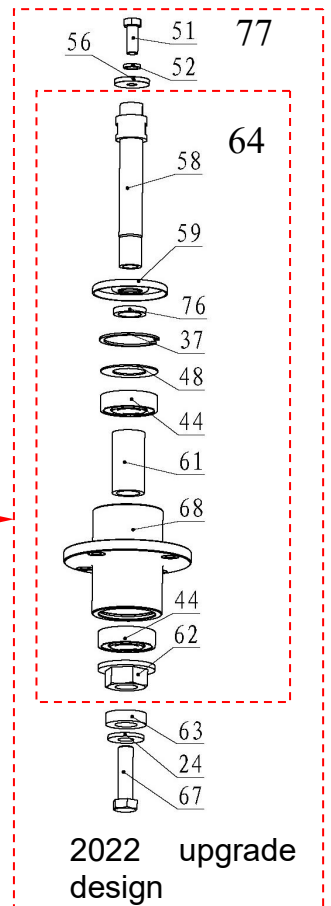
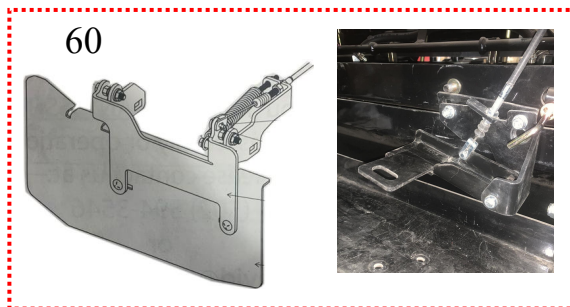
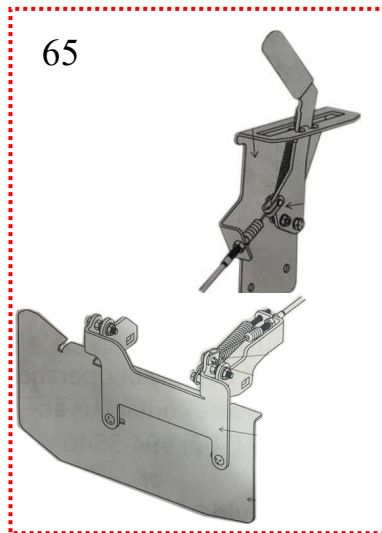
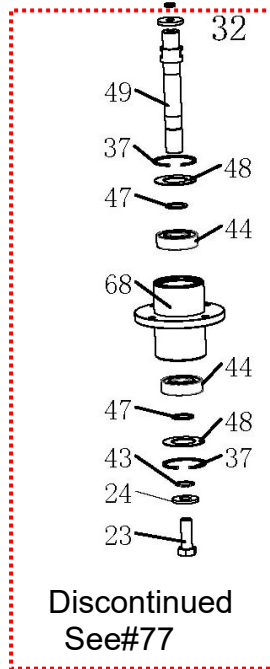
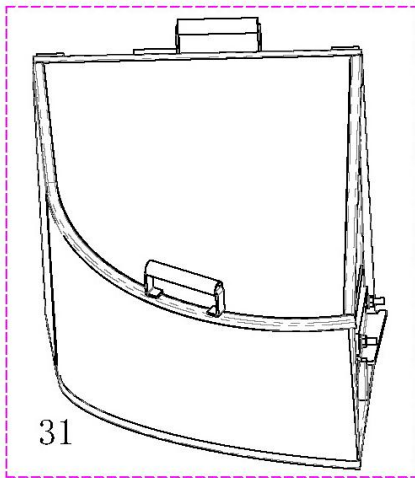
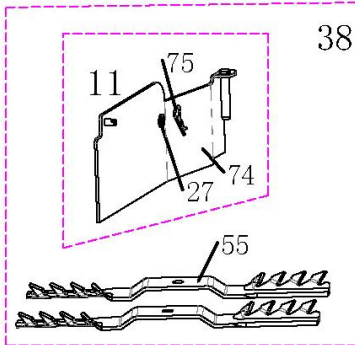
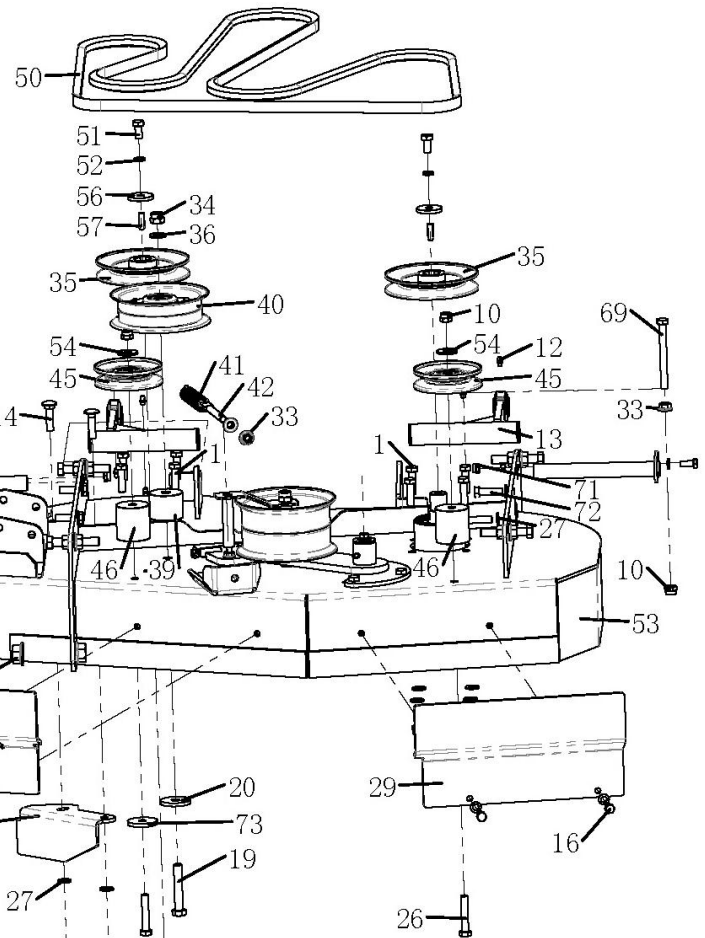
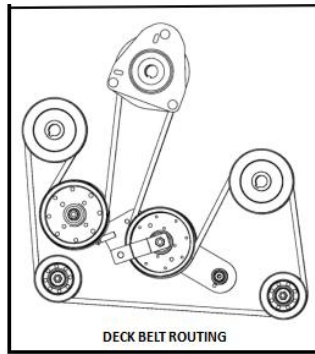
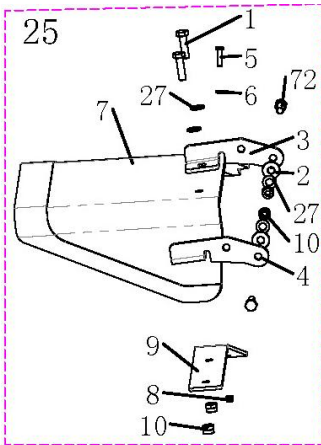


Handle controls assembly

| ITEM | PART NO. | DESCRIPTION | QTY |
|------|--------------|------------------------------|-----|
| 1 | 336-207 | Handle bar | 2 |
| 2 | 336-211A | Handle shaft | 1 |
| 3 | 601-262 | SC handle cover | 2 |
| 4 | 603-036 | Right control lever | 1 |
| 5 | 601-151 | Handrail shaft bushing | 4 |
| 6 | 600-305-0006 | Lock washer 6 GB93 | 2 |
| 7 | 600-302-0006 | Washer 6 GB96 | 2 |
| 8 | 600-002-0612 | Bolt M6-1X12 GB5783 | 2 |
| 9 | 603-084 | Left control lever | 1 |
| 10 | 601-142 | Bushing | 1 |
| 11 | 600-001-0645 | Bolt M6-1X45 GB5782 | 1 |
| 12 | 600-301-0006 | Washer 6 GB95 | 1 |
| 13 | 600-201-0006 | Nut M6 GB889 | 1 |
| 14 | 600-101-0516 | Screw M5-0.8X16 GB818 | 2 |
| 15 | 601-145 | 1W safety switch | 1 |
| 16 | 600-301-0005 | Washer 5 GB95 | 2 |
| 17 | 600-201-0005 | Nut M5 GB889 | 2 |
| 18 | 601-144 | Safety switch reset spring | 1 |
| 19 | 601-294 | Handle bar | 2 |
| 20 | 600-002-1030 | Bolt M10-1.5X30 GB5783 | 8 |
| 21 | 600-301-0010 | Washer 10 GB95 | 16 |
| 22 | 600-201-0010 | Nut M10 GB889 | 8 |
| 23 | 600-202-0010 | Nut M10 QC864 | 4 |
| 24 | 600-301-0008 | Washer 8 GB95 | 3 |
| 25 | 601-124 | φ2 pin roll | 2 |
| 26 | 601-130 | Joint | 2 |
| 27 | 601-258 | Rod | 2 |
| 28 | 336-231 | Rotary rubber plug | 2 |
| 29 | 601-148 | Grip | 2 |
| 30 | 601-146 | Left handle | 1 |
| 31 | 601-141 | Handle lever pivot | 1 |
| 32 | 601-262 | SC handle cover | 4 |
| 33 | 600-203-0010 | Nut M10 GB6170 | 2 |
| 34 | 601-138 | Parking handle sleeve | 1 |
| 35 | 603-040 | Parking handle | 1 |
| 36 | 600-002-0816 | Bolt M8-1.25X16 GB5783 | 2 |
| 37 | 600-305-0008 | Lock washer 8 GB93 | 2 |
| 38 | 600-002-0825 | Bolt M8-1.25X25 GB5783 | 2 |
| 39 | 603-038 | Parking handle pivot | 1 |
| 40 | 600-202-0010 | Nut M10 QC864 | 4 |
| 41 | 601-130 | Joint | 2 |
| 42 | 603-039 | Parking handle pivot bushing | 1 |
| 43 | 600-002-0840 | Bolt M8-1.25X40 GB5783 | 1 |

| | | | |
|----|--------------|--|---|
| 44 | 600-203-0010 | Nut M10 GB6170 | 2 |
| 45 | 601-151 | Handrail shaft bushing | 4 |
| 46 | 601-124 | φ2 pin roll | 2 |
| 47 | 600-903-0008 | Joint bearing M8 | 1 |
| 48 | 601-153 | Parking rod | 1 |
| 49 | 600-203-0008 | Nut M8 GB6170 | 2 |
| 50 | 600-405-0824 | B Shape pin roll 8*24 GB882 | 1 |
| 51 | 600-403-0220 | Cotter Pin 2*20 GB91 | 1 |
| 52 | 603-043 | Left control lever assembly(copper | 1 |
| 53 | 603-042 | Right control lever assembly (copper bushing, lever sleeve, end cap) | 1 |
| 54 | 601-235 | Left control lever assembly (lever sleeve, end cap) | 1 |
| 55 | 601-263 | The right operating handle components | 1 |
| 56 | 601-264 | The left operating handle components | 1 |
| 57 | 601-286 | Control lever | 2 |
| 58 | 603-112 | Right drive control weldment | 1 |
| 59 | 601-287 | Safety pin | 2 |
| 60 | 601-289 | Plain spring | 1 |
| 61 | 603-113 | Left drive control weldment | 1 |
| 62 | 601-147 | Handle | 1 |
| 63 | 600-101-0440 | Bolt M4-0.7X40 GB818 | 1 |
| 64 | 600-301-0004 | Plain Washer 4 GB95 | 2 |
| 65 | 601-138 | Parking handle sleeve | 1 |
| 66 | 603-120 | The right operating handle components | 1 |
| 67 | 603-119 | The left operating handle components | 1 |
| 68 | 603-124 | Handle assembly | 1 |

Deck assembly



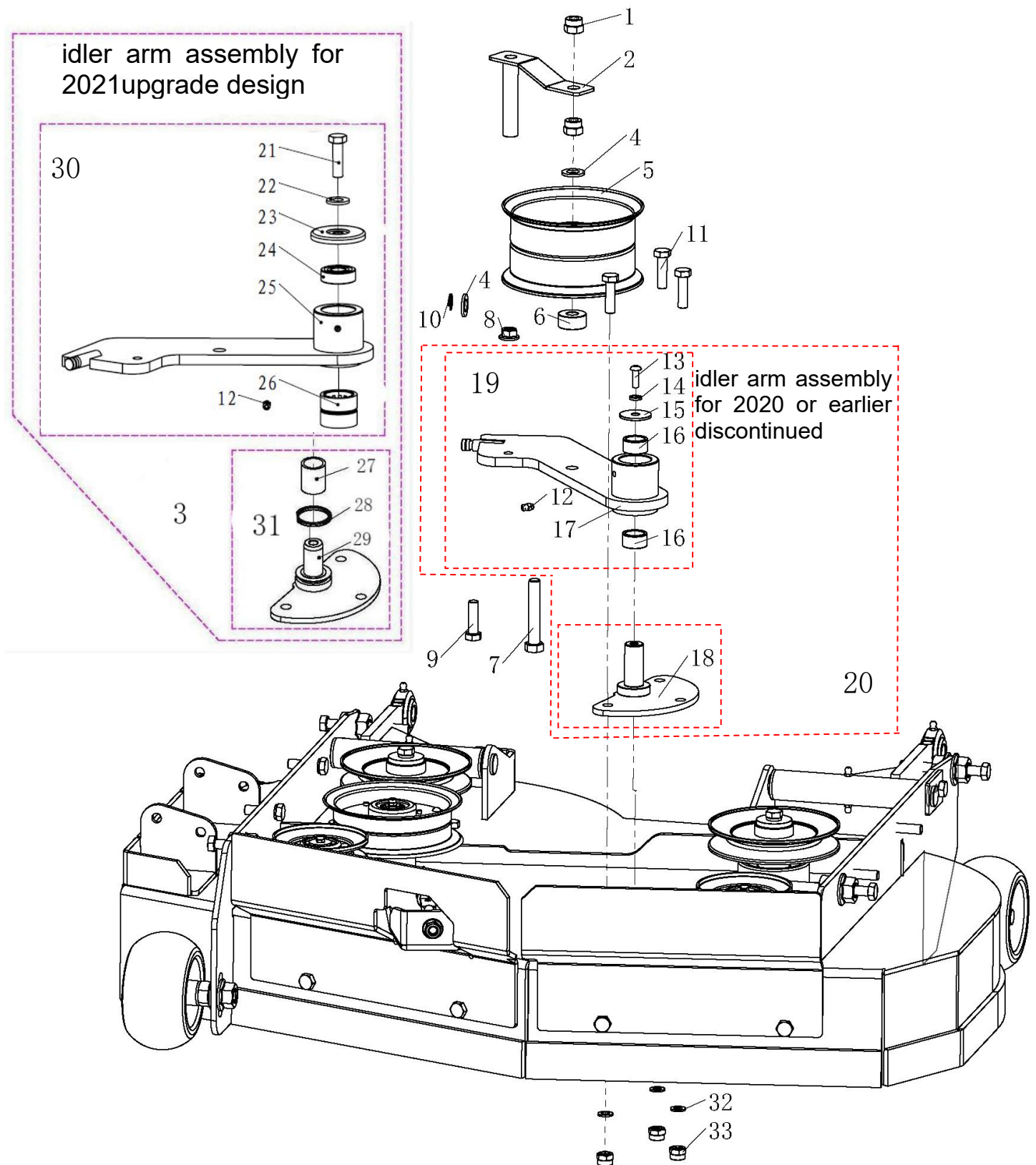
Deck assembly

| ITEM | PART NO. | DESCRIPTION | QTY |
|------|---------------|-----------------------------------|-----|
| 1 | 600-002-1035 | Bolt M10-1.5X35 GB5783 | 10 |
| 2 | 601-133 | Slip-resistant pad | 2 |
| 3 | 601-134 | Chute connecting plate-Left | 1 |
| 4 | 601-135 | Chute connecting plate-Right | 1 |
| 5 | 600-002-0625 | Bolt M6-1X25 GB5783 | 1 |
| 6 | 600-302-0006 | Washer 6 GB96 | 1 |
| 7 | 601-136 | Chute Deflector | 1 |
| 8 | 600-201-0006 | Nut M6 GB889 | 1 |
| 9 | 601-137 | Chute pressure plate | 1 |
| 10 | 600-201-0010 | Nut M10 GB889 | 17 |
| 12 | 600-901-0006 | Grease fitting M6*1 GB1152 | 8 |
| 13 | 603-062 | Decking turning arm assembly | 2 |
| 14 | 600-003-1025 | Bolt M10-1.5X25 GB801 | 2 |
| 15 | 603-063 | Decking turning shaft assembly | 2 |
| 16 | 600-002-0825 | Bolt M8-1.25X25 GB5783 | 6 |
| 17 | 603-064 | Baffle-discharge | 1 |
| 18 | 602-001A | 36SC off set blade | 2 |
| 19 | 600-001-12110 | Bolt M12-1.75X110 GB5782 | 1 |
| 20 | 603-065 | Guide pulley assembly washer I | 1 |
| 21 | 601-043 | Anti-scalp wheel | 3 |
| 22 | 600-001-16100 | Bolt M16-2X100 GB5782 | 3 |
| 23 | 604-021 | Blade bolt M16-1.5X45 | 2 |
| 24 | 600-902-0016 | Butterfly washer 16 DIN6796 | 2 |
| 25 | 601-229 | Chute assembly | 1 |
| 26 | 600-001-10100 | Bolt M10-1.5X100 GB5782 | 2 |
| 27 | 600-301-0010 | Washer 10 GB95 | 18 |
| 28 | 603-066 | Deck protect plate -right | 1 |
| 29 | 603-067 | Deck protect plate -left | 1 |
| 30 | 600-202-0016 | Nut M16 QC864 | 6 |
| 32 | 603-079 | Spindle assembly (Discontinued) | 2 |
| 33 | 600-202-0010 | Nut M10 QC864 | 3 |
| 34 | 600-201-0012 | Nut M12 GB889 | 1 |
| 35 | 602-005 | Spindle Pulley | 2 |
| 36 | 600-301-0012 | Washer 12 GB95 | 1 |
| 37 | 600-306-0062 | Snap ring 62 | 2 |
| 39 | 603-076 | Guide pulley cushion cover II | 1 |
| 40 | 601-048 | Idler pulley | 1 |
| 41 | 604-039 | Tension spring | 1 |
| 42 | 300-037 | Rod thread | 1 |
| 43 | 600-307-0025 | Bearing seat | 2 |

Bradley Stand-On Compact Mower Owner's Manual

| | | | |
|-----------------|---------------|---|---|
| 44 | 600-501-6305 | Bearing 6305-2RS | 4 |
| 45 | 348-005 | V shape idler pulley | 2 |
| 46 | 603-071 | Guide pulley cushion cover I | 2 |
| 47 | 601-027 | Flat washer | 4 |
| 48 | 601-028 | Flat washer | 4 |
| 49 | 603-077 | Spindle shaft | 2 |
| 50 | 602-004 | Deck belt LB132 | 1 |
| 51 | 600-002-1020 | Bolt M10-1.5X20 GB5783 | 2 |
| | 600-002-1230 | Bolt M12-1.75X30 GB5783 (New Design Spindle Assembly) | 2 |
| 52 | 600-305-0010 | Lock washer 10 GB93 | 2 |
| | 600-305-0012 | Lock washer 12 GB93 (New Design Spindle Assembly) | 2 |
| 53 | 603-072 | Deck assembly | 1 |
| 54 | 600-302-0010 | Washer 10 GB96 | 2 |
| 56 | 601-033 | Plain washer | 2 |
| | 601-313 | Plain Washer (New Design Spindle Assembly) | 2 |
| 57 | 600-401-0830 | Key 8*7*30 | 2 |
| 58 | 603-102 | Spindle shaft | 2 |
| 59 | 100C-017 | Bearing cap | 2 |
| 61 | 601-279 | Bearing bushing | 2 |
| 62 | 601-280 | Nut | 2 |
| 63 | 603-100 | 36Plain washer | 2 |
| 64 | 603-131 | Spindle (2022 upgrade design) | 2 |
| 67 | 601-274 | Blade bolt M16-1.5X60 | 2 |
| 68 | 601-031 | Spindle | 2 |
| 69 | 600-002-10130 | Bolt M10-1.5X130 GB5782 | 1 |
| 70 | 600-301-0008 | Plain washer 8 GB95 | 6 |
| 71 | 600-201-0008 | Nylon nut M8 GB889.1 | 4 |
| 72 | 600-001-1030 | Bolt M10-1.5X30 GB5783 | 6 |
| 73 | 603-128 | Guide pulley assembly washer II | 1 |
| 76 | 601-278 | Bearing cover block | 2 |
| 77 | 603-101 | Spindle assembly (2022 upgrade design) | 2 |
| optional | | | |
| 11 | 601-242 | Mulch plate assembly | 1 |
| 31 | GC2400 | Grass catcher | 1 |
| 38 | 603-085 | Mulch kit | 1 |
| 55 | 500-203A | Off set mulch blade for 36" | 2 |
| 60 | GF-36OCDC-FC | Grass Flap Foot Pedal Control OCDC For 36SC | 1 |
| 65 | GF-36OCDC-HC | Handle Control Grass Flap OCDC For 36SC..7BR50-H3L | 1 |
| 74 | 602-008 | Mulch plate | 1 |
| 75 | 601-124 | Hair Pin Cotter | 1 |

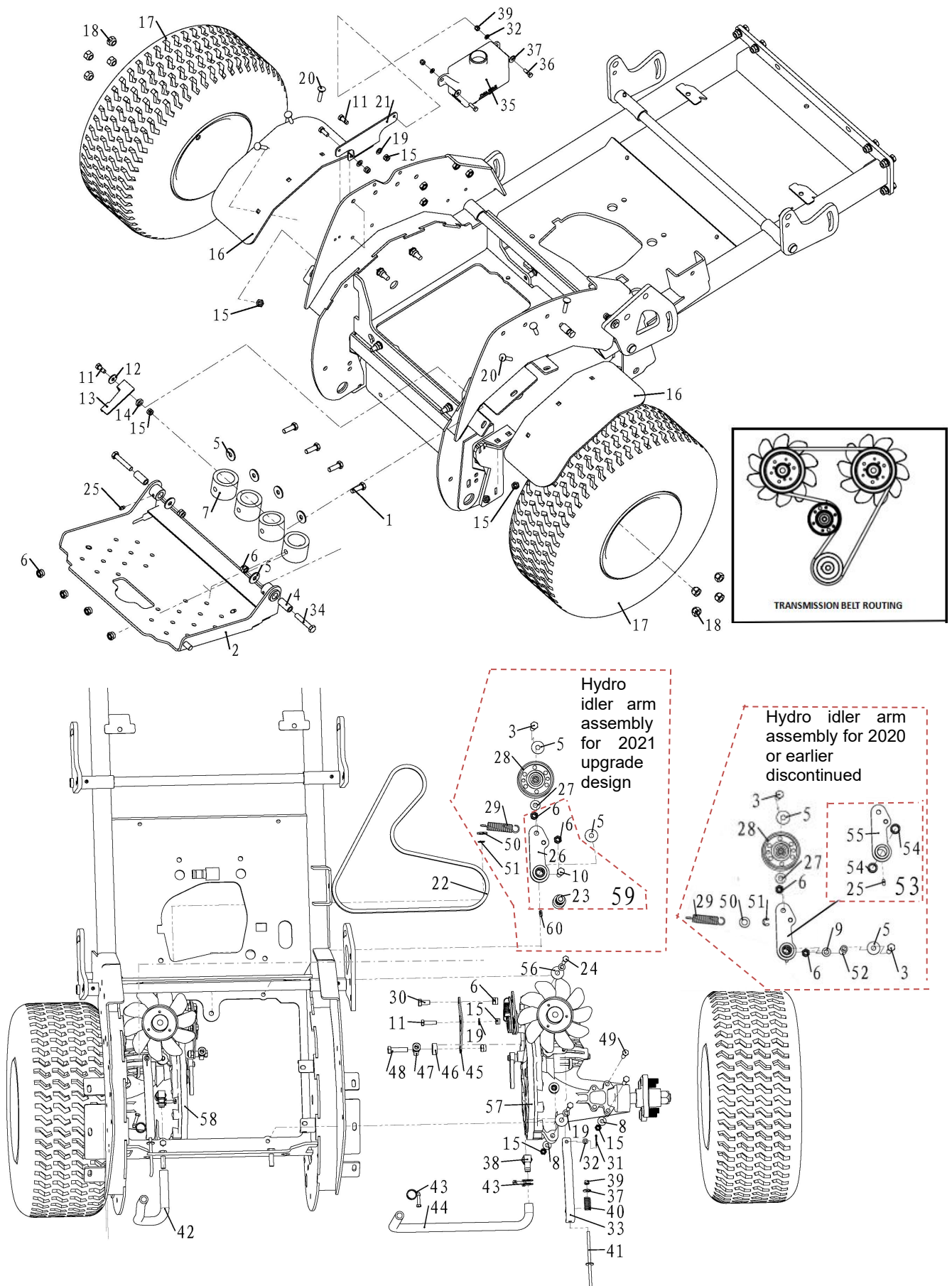
Deck idler arm assembly



Deck idler arm assembly

| ITEM | PART NO. | DESCRIPTION | QTY |
|------|---------------|--|-----|
| 1 | 600-201-0012 | Nut M12 GB889 | 2 |
| 2 | 601-035 | Belt stopper plate | 1 |
| 3 | 603-085a | Idler arm assembly for 2021upgrade design | 1 |
| 4 | 600-301-0012 | Washer 12 GB95 | 2 |
| 5 | 601-036 | Idler pulley | 1 |
| 6 | 603-069 | Idler pulley cushion cover | 1 |
| 7 | 600-001-12110 | Bolt M12-1.75X110 GB5782 | 1 |
| 8 | 600-202-0008 | Nut M8 GC864 | 1 |
| 9 | 600-002-0835 | Bolt M8-1.25X35 GB5783 | 1 |
| 10 | 600-308-0009 | Snap ring M9 GB896 | 1 |
| 11 | 600-002-1025 | Bolt M10-1.5X25 GB5783 | 3 |
| 12 | 600-901-0006 | Grease fitting M6*1 45°GB1152 | 1 |
| 13 | 600-002-0825 | Bolt M8-1.25X25 GB5783 | 1 |
| 14 | 600-305-0008 | Lock washer 8 GB93 | 1 |
| 15 | 601-038 | Idler pulley stopper washer | 1 |
| 16 | 601-039 | Bushing,Flange Pivot | 2 |
| 17 | 603-068 | Idler arm welding part | 1 |
| 18 | 601-045 | Shaft | 1 |
| 19 | 603-080b | Idler arm | 1 |
| 20 | 603-085 | Idler arm assembly for 2020 or earlierdiscontinued | 1 |
| 21 | 600-002-1035 | Bolt M10-1.5X35 GB5783 | 1 |
| 22 | 600-902-0010 | Butterfly washer 10 DIN6796 | 1 |
| 23 | 604-025 | Dust proof cap of bearing | 1 |
| 24 | 600-501-6300 | Deep groove ball bearing 6300 GB276-94 | 1 |
| 25 | 603-068a | Idler arm weldment (upgrade structure) | 1 |
| 26 | 600-504-6904 | Needle bearing RNA6904 | 1 |
| 27 | 604-026 | Lining of needle bearing RNA6904 | 1 |
| 28 | 600-601-3003 | O shape ring 30*3 GB/T3452.1 | 1 |
| 29 | 604-023 | Mounting plate weldment | 1 |
| 30 | 603-080a | Idler arm | 1 |
| 31 | 601-045a | Pivot post assembly | 1 |
| 32 | 600-301-0010 | Plain Washer 10 GB95 | 3 |
| 33 | 600-201-0010 | Nut M10 GB889 | 3 |

Transmission assembly



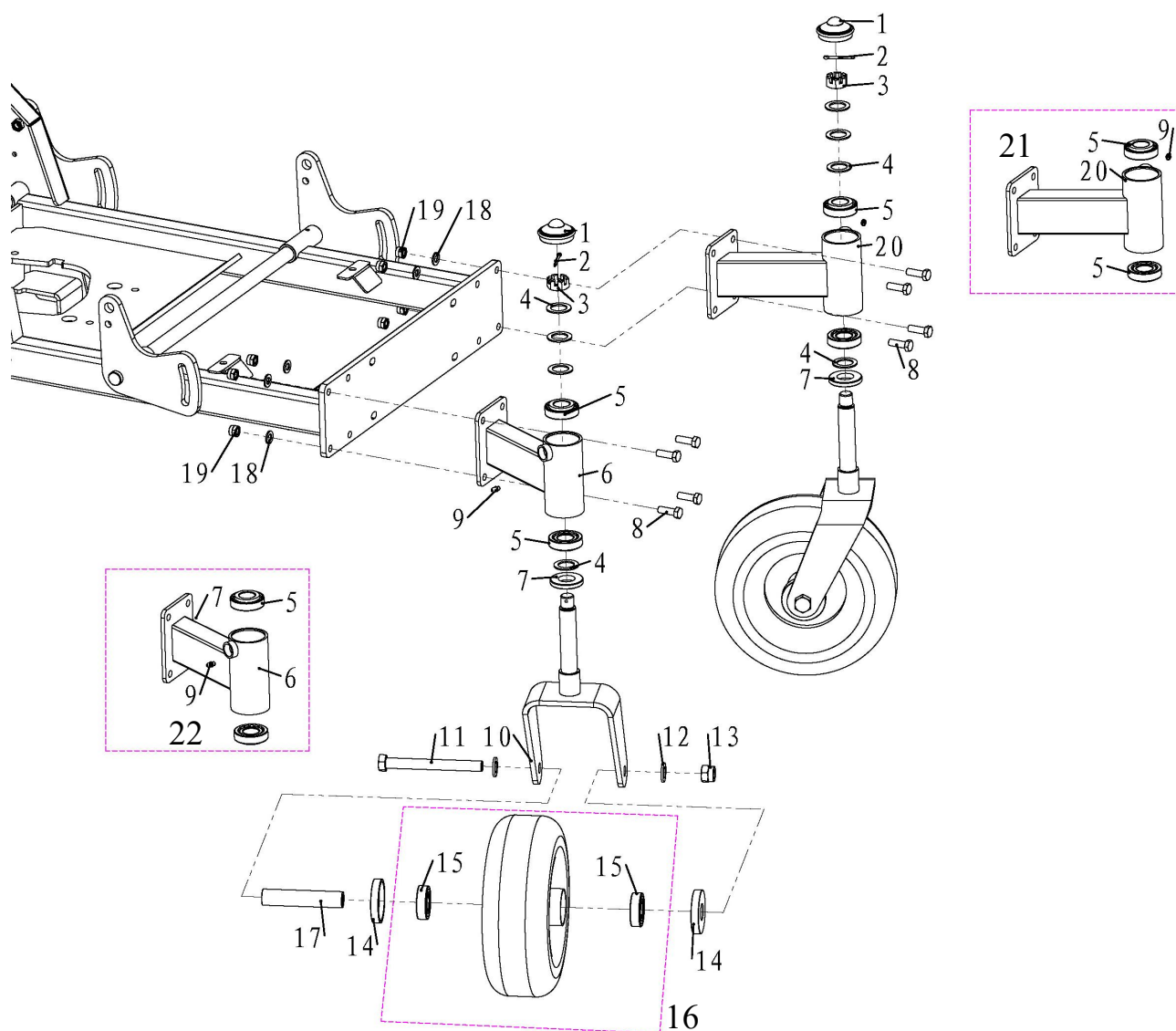
Transmission assembly

| ITEM | PART NO. | DESCRIPTION | QTY |
|------|--------------|------------------------------|-----|
| 1 | 600-002-1030 | Bolt M10-1.5X30 GB5783 | 4 |
| 2 | 603-049 | Standing board assembly | 1 |
| 3 | 600-001-1050 | Bolt M10-1.5X50 GB5782 | 1 |
| 4 | 601-088 | Pivot hub | 2 |
| 5 | 600-302-0010 | Washer 10 GB96 | 8 |
| 6 | 600-201-0010 | Nut M10 GB889 | 12 |
| 7 | 601-089 | Rubber Block | 4 |
| 8 | 336-239 | Plain washer 3*8.5 id *20 od | 8 |
| 9 | 600-301-0010 | Washer 10 GB95 | 1 |
| 10 | 600-001-1090 | Bolt M10-1.5X90 GB5782 | 1 |
| 11 | 600-002-0820 | Bolt M8-1.25X20 GB5783 | 5 |
| 12 | 600-302-0008 | Washer 8 GB96 | 1 |
| 13 | 603-051 | Hanging board | 1 |
| 14 | 601-211 | Hanging board bushing | 1 |
| 15 | 600-201-0008 | Nut M8 GB889 | 19 |
| 16 | 603-052a | Tire fender | 2 |
| 17 | 603-053 | Rear wheel | 2 |
| 18 | 601-085 | Shaft head nut | 8 |
| 19 | 600-301-0008 | Washer 8 GB95 | 6 |
| 20 | 600-003-0820 | Bolt M8-1.25X20 GB801 | 6 |
| 21 | 603-054 | Hydro oil tank bracket | 1 |
| 22 | 603-055 | Transmission belt 36SC A46 | 1 |
| 23 | 603-105 | Hydro idler arm pivot | 1 |
| 24 | 600-002-1065 | Bolt M10-1.5X65 GB5783 | 4 |
| 25 | 600-901-0006 | Grease fitting M6*1 GB1152 | 2 |
| 26 | 603-109 | Idler arm assembly | 1 |
| 27 | 601-104 | Pivot Arm Washer | 1 |
| 28 | 300-035 | Die puley 3 | 1 |
| 29 | 603-058 | Return spring | 1 |
| 30 | 600-002-1020 | Bolt M10-1.5X20 GB5783 | 2 |
| 31 | 600-403-0220 | Cotter pin 2*20 GB91 | 2 |
| 32 | 600-301-0006 | Washer 6 GB95 | 2 |

Bradley Stand-On Compact Mower Owner's Manual

| | | | |
|----|--------------|--|---|
| 33 | 601-096 | Plate weldment | 2 |
| 34 | 600-001-1060 | Bolt M10-1.5X60 GB5782 | 2 |
| 35 | 601-231 | Hydro oil tank body | 1 |
| 36 | 600-002-0620 | Hexagon bolt M6-1X20 | 2 |
| 37 | 600-302-0006 | Washer 6 GB96 | 4 |
| 38 | 336-220a | The pipe joint(45) | 2 |
| 39 | 600-201-0006 | Nut M6 GB889 | 4 |
| 40 | 601-097 | Parking reset spring | 2 |
| 41 | 601-098 | Neutral rod | 2 |
| 42 | 603-059 | Hydro oil line 320mm-Shorter | 1 |
| 43 | 601-095 | Tubing Fitting | 4 |
| 44 | 603-060 | Hydro oil line 550mm-Longer | 1 |
| 45 | 601-248 | Neutral connecting plate | 2 |
| 46 | 603-123 | Spacer | 2 |
| 47 | 600-903-0010 | Joint bearing 10 | 2 |
| 48 | 600-002-1040 | Bolt M10-1.5X40 GB5783 | 2 |
| 49 | 600-001-0875 | Bolt M8-1.25X75 GB5782 | 4 |
| 50 | 600-301-0012 | Washer 12 GB95 | 1 |
| 51 | 600-308-0009 | Split washer | 1 |
| 52 | 603-056 | Transmission idler pulley assembly | 1 |
| 53 | 603-061 | Transmission idler arm assembly | 1 |
| 54 | 300-033 | Idler arm bushing | 2 |
| 55 | 603-057 | Idler arm assembly | 1 |
| 56 | 336-237 | Hydraulic motor adjustment pad | 4 |
| 57 | 603-122 | Right hydraulic motor | 1 |
| 58 | 603-121 | Left hydraulic motor | 1 |
| 59 | 603-106 | Hydro idler arm assembly upgrade kit for 2020 or earlier | 1 |
| 60 | 600-905-0006 | Grease fitting M6*1 45° | 1 |

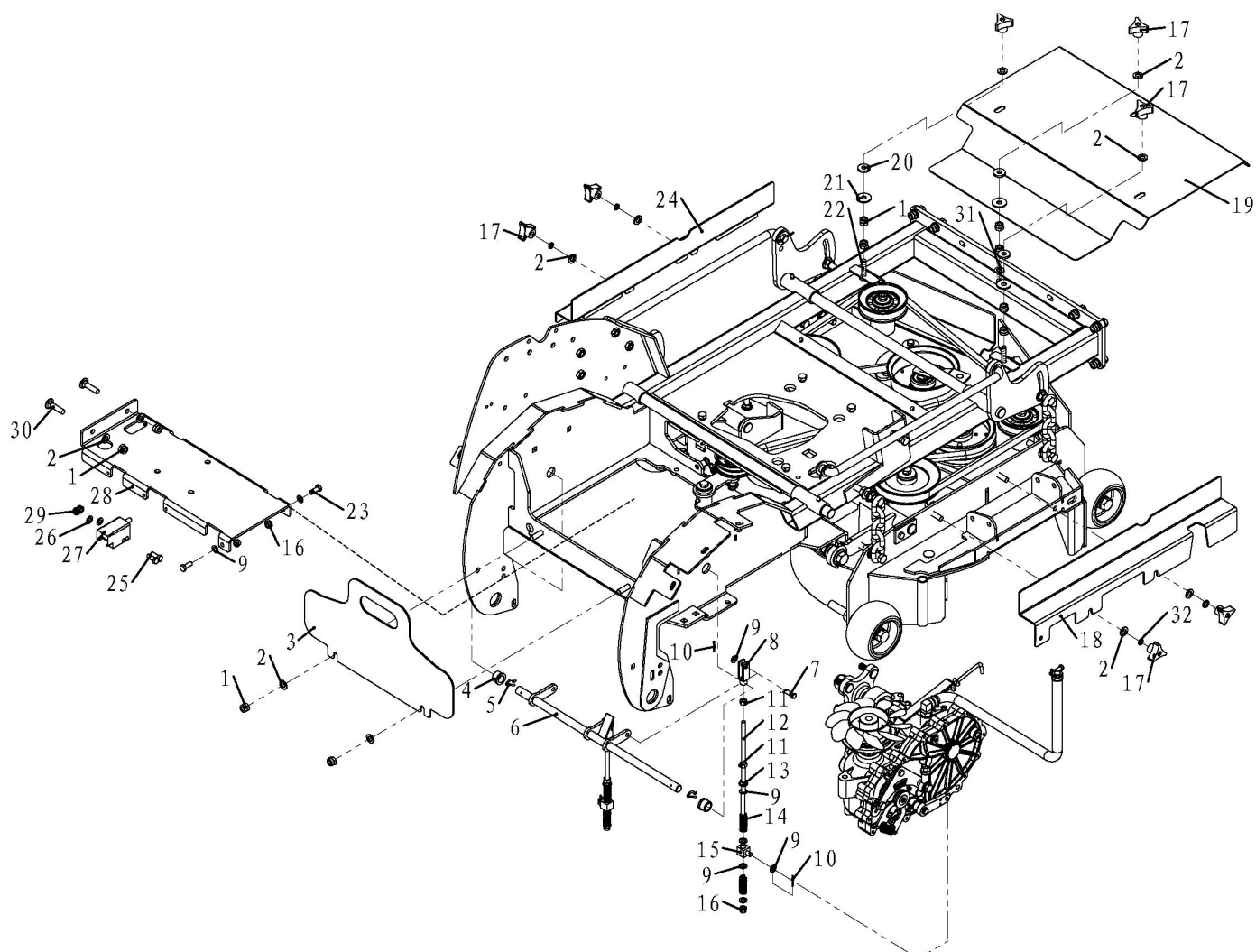
Front wheel assembly



Front wheel assembly

| ITEM | PART NO. | DESCRIPTION | QTY |
|------|---------------|----------------------------------|-----|
| 1 | 601-075 | Shaft Cover | 2 |
| 2 | 600-403-0436 | Cotter pin | 2 |
| 3 | 601-074 | Hexagon slot nut | 2 |
| 4 | 601-072 | Adjustable washer III | 8 |
| 5 | 600-502-30205 | Bearing 30205 | 4 |
| 6 | 603-005a | Right front arm welding assembly | 1 |
| 7 | 601-071 | 7.5 washer | 2 |
| 8 | 600-002-1030 | Bolt M10-1.5X30 GB5783 | 8 |
| 9 | 600-901-0006 | Grease fitting M6*1 GB1152 | 2 |
| 10 | 603-006 | Caster yoke | 2 |
| 11 | 600-001-16170 | Bolt M16-2X170 GB5782 | 2 |
| 12 | 600-301-0016 | Washer 16 GB95 | 4 |
| 13 | 600-201-0016 | Nut M16 GB889 | 2 |
| 14 | 601-067 | Bearing cap | 4 |
| 15 | 600-501-6205 | Bearing 6205-2RS | 4 |
| 16 | 603-012F | Flat free tire assembly | 2 |
| | 603-012 | Front tire assembly | 2 |
| 17 | 603-008 | Front wheel supporting bushing | 2 |
| 18 | 600-301-0010 | Washer 10 GB95 | 8 |
| 19 | 600-201-0010 | Nut M10 GB889 | 8 |
| 20 | 603-009a | Left front arm welding assembly | 1 |
| 21 | 603-010 | Left front arm assembly | 1 |
| 22 | 603-011 | Right front arm assembly | 1 |

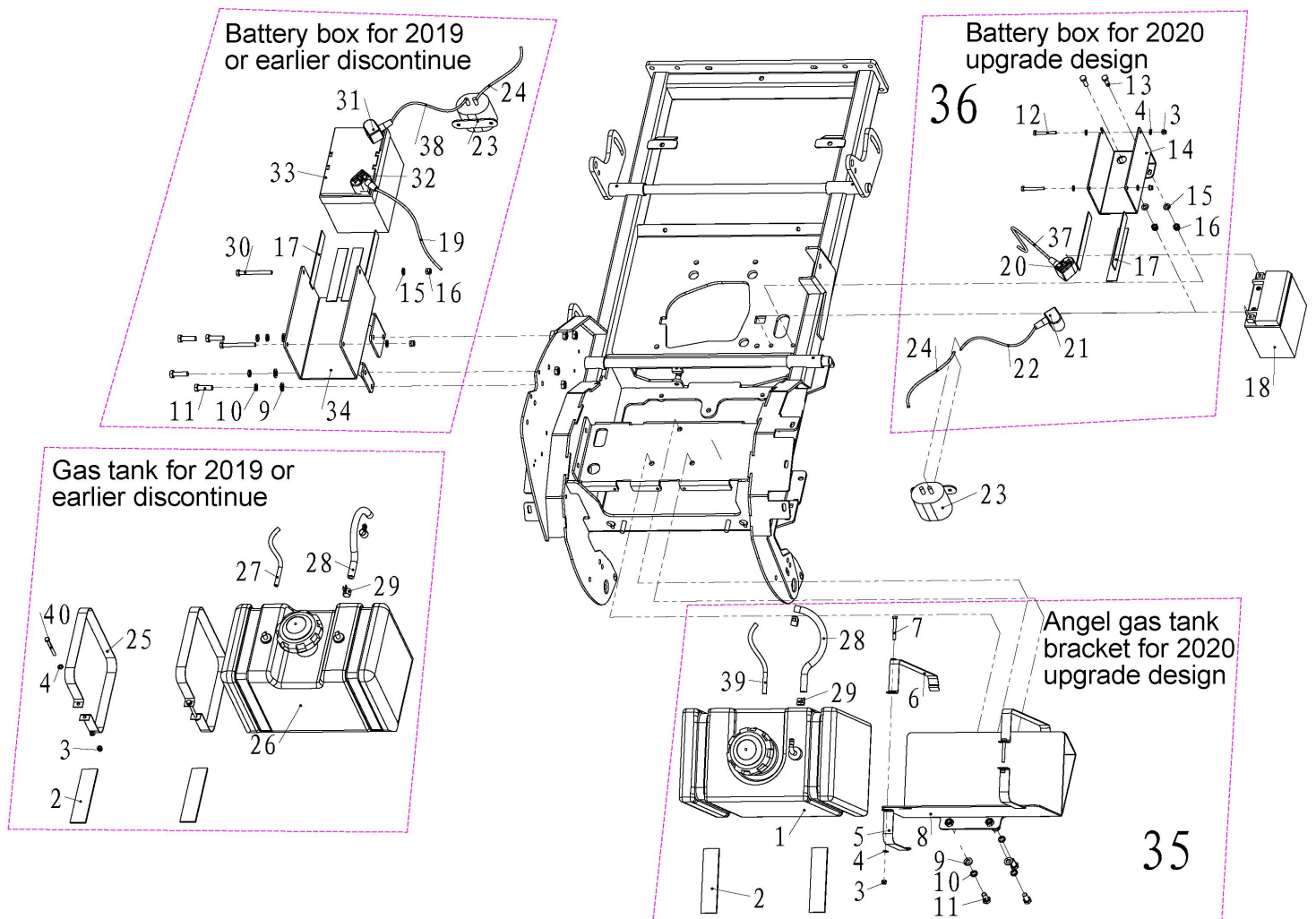
Parking assembly



Parking assembly

| ITEM | PART NO. | DESCRIPTION | QTY |
|------|---------------|---------------------------------|-----|
| 1 | 600-201-0010 | Nut M10 GB889 | 10 |
| 2 | 600-301-0010 | Washer 10 GB95 | 11 |
| 3 | 603-016 | Tank baffle | 1 |
| 4 | 601-126 | Parking pivot rod nylon bushing | 2 |
| 5 | 601-125 | Pin | 2 |
| 6 | 603-017 | Parking pivot rod welding part | 1 |
| 7 | 600-405-0824 | B shape pin roll 8x24 GB882 | 2 |
| 8 | 601-127 | M8 fork rod | 2 |
| 9 | 600-301-0008 | Washer 8 GB95 | 14 |
| 10 | 600-403-0220 | Cotter pin 2*20 GB91 | 4 |
| 11 | 600-203-0008 | Nut M8 GB6170 | 4 |
| 12 | 601-128 | Parking rod | 2 |
| 13 | 600-202-0008 | Nut M8 QC864 | 2 |
| 14 | 601-129 | Parking rod spring | 4 |
| 15 | 601-130 | Rod connector | 2 |
| 16 | 600-201-0008 | Nut M8 GB889 | 5 |
| 17 | 601-080 | Knob nut | 7 |
| 18 | 603-018 | Deck protect plate-Right | 1 |
| 19 | 603-019 | Belt cover | 1 |
| 20 | 348-106 | Belt cover rubber washer | 3 |
| 21 | 600-302-0010 | Washer 10 GB96 | 3 |
| 22 | 600-002-1045 | Bolt M10-1.5X45 GB5783 | 2 |
| 23 | 600-002-0825 | Bolt M8-1.25X25 GB5783 | 2 |
| 24 | 603-020 | Deck protect plate-Left | 1 |
| 25 | 600-101-0516 | Screw M5-0.8X16 GB818 | 2 |
| 26 | 600-301-0005 | Washer 5 GB95 | 2 |
| 27 | 601-121 | 2W Safety switch | 1 |
| 28 | 603-021 | Gas tank support plate | 1 |
| 29 | 600-201-0005 | Nut M5 GB889 | 2 |
| 30 | 600-003-1025 | Bolt M10-1.5X25 GB801 | 2 |
| 31 | 600-002-10110 | Bolt M10-1.5X110 GB5783 | 1 |
| 32 | 600-305-0010 | Lock washer 10 GB93 | 4 |

Battery box & angle gas tank bracket



Battery box & angle gas tank bracket comparison

| ITEM | PART NO. | DESCRIPTION | QTY |
|------|---------------|--|-----|
| 1 | WM2836-089 | Fuel tank | 1 |
| 2 | 100-107 | Gas tank pad | 2 |
| 3 | 600-201-0006 | Nut M6 GB889 | 4 |
| 4 | 600-301-0006 | Washer 6 GB95 | 6 |
| 5 | 603-087 | Gas tank strip-short | 2 |
| 6 | 603-088 | Gas tank strip-long | 2 |
| 7 | 600-001-0665 | Bolt M6-1X65 GB5782 | 2 |
| 8 | 603-089 | Gas tank bracket weldment | 1 |
| 9 | 600-301-0010 | Washer 10 GB95 | 2 |
| 10 | 600-305-0010 | Lock washer 10 GB93 | 2 |
| 11 | 600-002-1025 | Bolt M10-1.5X25 GB5783 | 2 |
| 12 | 600-001-06105 | Bolt M6-1X105 GB5782 | 2 |
| 13 | 600-002-0825 | Bolt M8-1.25X25 GB5783 | 2 |
| 14 | 603-022A | Battery box-2020 upgrade | 1 |
| 15 | 600-301-0008 | Washer 8 GB95 | 2 |
| 16 | 600-201-0008 | Nut M8 GB889 | 2 |
| 17 | WM2836-080 | Battery rubber gasket | 3 |
| 18 | 603-092 | AGM Battery (Model#FAYTX14,please purchase from your local Interstate Batteries) | 1 |
| 19 | 603-023 | Negative wire L=400mm | 1 |
| 20 | 603-093 | Negative cap | 1 |
| 21 | 603-094 | Positive cap | 1 |
| 22 | 603-091 | Positive wiring L=610mm | 1 |
| 23 | 601-021 | Solenoid | 1 |
| 24 | 603-024 | Solenoid wire | 1 |
| 25 | 603-002 | Gas tank strip | 2 |
| 26 | 603-001 | Gas tank-4 gallon (discontinued) | 1 |
| 27 | 603-003 | Air line $\phi 9 \times \phi 5 \times 760\text{mm}$ | 1 |
| 28 | 603-004 | Fuel line $\phi 12 \times \phi 6.5 \times 520\text{mm}$ | 1 |
| 29 | 601-111 | Fuel line clamp $\phi 12$ | 2 |
| 30 | 200-321 | Bolt M8-1.25 \times 155 GB5782 | 2 |
| 31 | 601-223 | Positive capRed Terminal Protector | 1 |
| 32 | 601-222 | Negative cap Black Terminal Protector | 1 |
| 33 | WM2836-071 | Battery(Model# SP-30R,please purchase from your local Interstate Batteries) | 1 |
| 34 | 603-022 | Battery box | 1 |
| 35 | 603-086 | Angle gas tank bracket assembly | 1 |
| 36 | 603-095 | Battery box assembly-2020 upgrade | 1 |
| 37 | WM2836-078A | Negative wiring L=300mm | 1 |
| 38 | WM2836-077A | Positive wiring L=420mm | 1 |
| 39 | 603-129 | Air line $\phi 9 \times \phi 5 \times 780\text{mm}$ | 1 |
| 40 | 600-001-0675 | Bolt M6-1X75 GB5782 | 2 |

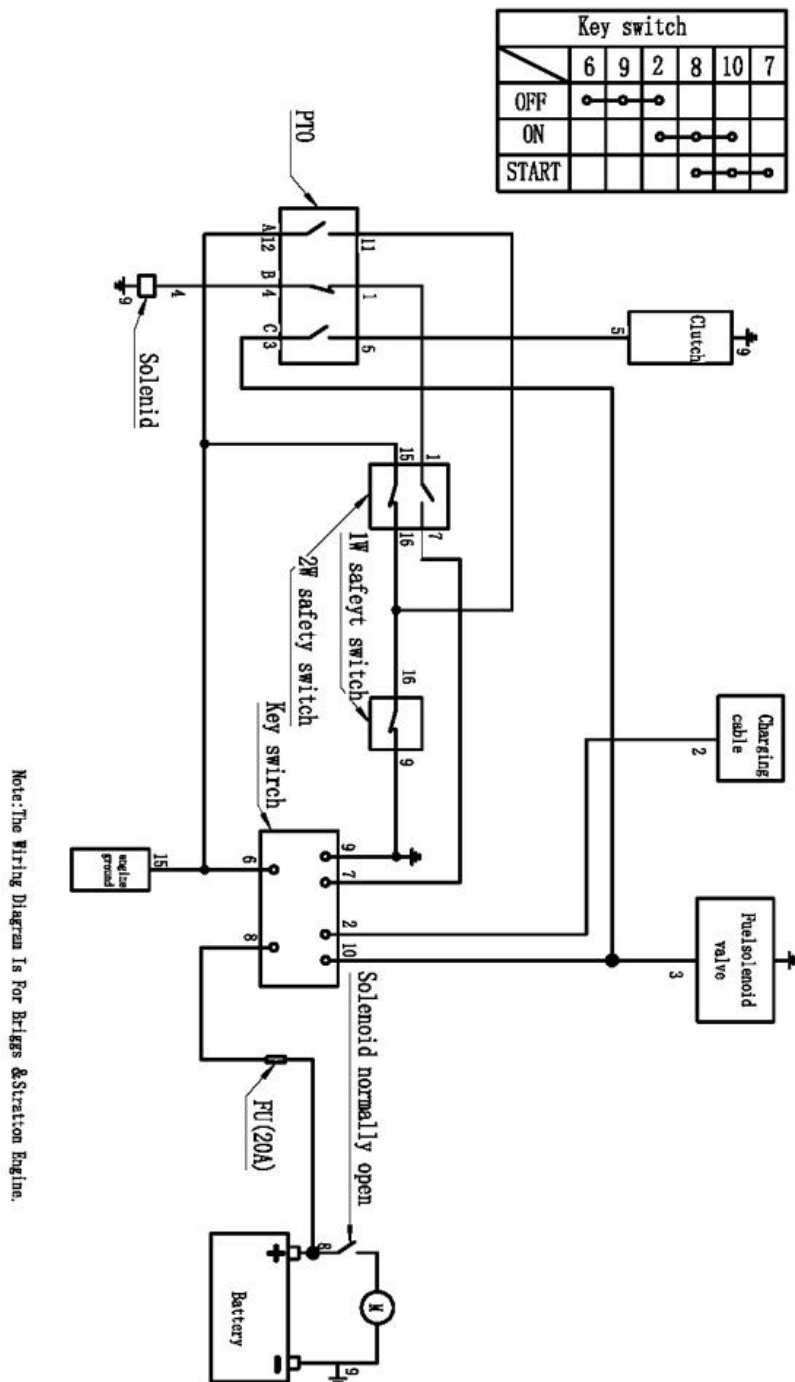
36SC SAFETY AND INFORMATION DECALS

| ITEM | PART NO. | DESCRIPTION | QTY |
|------|----------|-------------|-----|
| | 603-082 | 36SC decal | 1 |



BRIGGS & STRATTON WIRING DIAGRAM

| ITEM | PART NO. | DESCRIPTION | QTY |
|------|----------|----------------------|-----|
| | 603-083 | 36SC BS wire harness | 1 |



This page intentionally left blank.



BRADLEY MOWERS PRODUCT REGISTRATION

CUSTOMER INFORMATION

Name: _____
Business Name: _____
Address: _____
City: _____ State: _____ Zip: _____
Phone Number: _____ Fax Number: _____
Email Address: _____

DEALER INFORMATION(place of purchase) *required

Dealer's Name: _____
Dealer's Address: _____
City: _____ State: _____ Zip: _____
Phone Number: _____

(The remaining dealer information will help you get warranty service faster should you need it.)

PRODUCT INFORMATION

Product Name and Model Number: _____
Serial Number: _____
Engine/Motor Brand and Size: _____
Engine Serial Number: _____

Engine hydraulic pumps, and batteries are warranted through their respective manufacturers. Please contact the manufacturer for more details.

Signature _____ Date of Purchase: _____

KEEP YOUR RECEIPT WITH A COPY OF THIS REGISTRATION FORM

Mail your completed form to:
Havener Enterprises, Inc.
368 S. Michigan Ave.
Bradley, IL 60915

Email your completed form to;
info@bradleymowers.com

Fax your completed form to:
888.785.1348

Complete your registration form online at www.bradleymowers.com

Warranties should be performed by an authorized Bradley Mowers dealer. All other warranty service requires prior approval.

Your product warranty is only valid if this file is completed signed, and returned to Havener Enterprises, Inc. within two weeks of product purchase. See the warranty statement for more details.

Your information may be collected but never shared outside of Havener Enterprises, Inc. and its subsidiaries