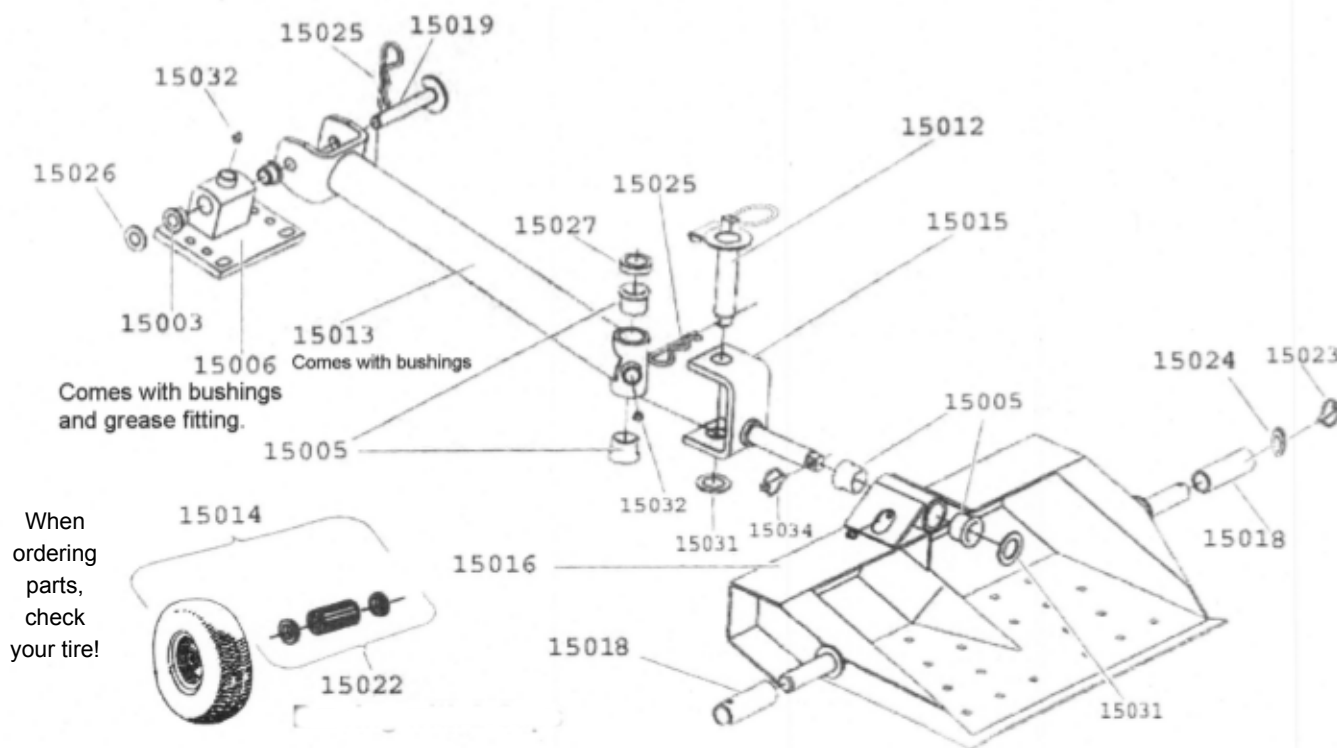


Mower Sulky

By Havener Enterprises, Inc.®

ILLUSTRATED PARTS LIST

TS2000 Two-Wheel Sulky



When ordering parts, check your tire!

15014 - Turf Tread Pneumatic Tire with Bearing (15022) and Caps

15036 - Ribbed Wheel Assembly with Bearing (15037) and Caps

LIMITED WARRANTY

Havener Enterprises, Inc. warrants that the above product is free from original defect, in workmanship and material for 24 months from date of purchase, which includes a 7 DAY no questions asked return policy. Warranty is void if product has been damaged through causes not arising out of defects in material or in workmanship. This warranty covers parts only. Bent parts of product, tires, tubes, bushings, worn bearing parts, and paint are specifically excluded from this warranty. Havener Enterprises, Inc. disclaims any consequential damages, arising from the breach of any warranty. (Some states do not allow the exclusion of consequential damages, so the above disclaimer may not apply to you.) During the above mentioned warranty period, the product will either be repaired or replaced with a new or reconditioned model of an equal equity (at Havener Enterprises, Inc.'s option) when the product is returned with a copy of the original retail invoice, by UPS (prepaid and insured) to Havener Enterprises, Inc., 368 S Michigan Ave, Bradley, IL 60915 phone: 815.935.8383. Call before returning any product.

Havener Enterprises, Inc. • 368 S. Michigan Ave • Bradley, IL • 60915 • www.mowersulky.com
Phone: 815.935.8383 Fax: 815.935.0138