

Bradley Power Plus Blade Sharpener

8" Bi-Directional Blade Sharpener

Model S90

Parts & Owner's Manual



Manufacturers of Quality Mowers, Sulkies and other Turf Maintenance equipment. Commercial Quality at low prices. All products can be purchased online and shipped direct.

Havener Enterprises, Inc.
368 S. Michigan Ave.
Bradley, IL 60915
815.935.8383

www.havenerent.com

Rev. March 2014

TABLE OF CONTENTS

ABOUT THIS MANUAL	2
SAFETY INFORMATION	3
OPERATION OF BLADE SHARPENER	4
MAINTAINING YOUR BLADE SHARPENER.....	5
ILLUSTRATED PARTS LIST	5
Parts List Bradley Blade Sharpener Model: S90	6
WARRANTY STATEMENT	7
NOTES	8

ABOUT THIS MANUAL

Congratulations on the purchase of your new Bradley Power Plus Blade Sharpener. We are confident that this Blade Sharpener will provide you with years of excellent performance, durability, and trouble free service when operated and maintained as directed in this Manual.

This owner's manual is considered a permanent part of the Bradley Power Plus Blade Sharpener. It must be available to all of the operators and/or person(s) servicing the Blade Sharpener. Should the unit be resold, this manual must remain with the unit.

All information, illustrations and specifications contained in this manual were in effect at the time of publication. The Manufacturer reserves the right to change, modify, and/or discontinue specifications and/or design without notice. Please contact your authorized dealer before operating and/or servicing the equipment if there is a change that has been made to your Blade Sharpener that is not shown or reflected in this manual.

Should you ever have any questions regarding the operation, maintenance, or safety of your Blade Sharpener, please contact your authorized dealer who has been trained on the operation and servicing of this unit.

A space has been provided below to record information about your new Blade Sharpener. Please take time to record such information for future reference, especially when you contact an authorized dealer with questions.

If you did not receive your warranty registration, contact your dealer immediately!

Date Purchased: _____

Model Number: S90

Purchased From: _____

SAFETY INFORMATION

Read This Manual Carefully And Thoroughly Before Operating The Blade Sharpener!



DANGER Indicates an imminently hazardous situation which, if not avoided, will result in death or serious injury.



WARNING Indicates a potentially hazardous situation which, if not avoided, could result in death or serious injury.



CAUTION Indicates a potentially hazardous situation which, if not avoided, may result in minor or moderate injury. It may also indicate an unsafe practice.

CALIFORNIA PROPOSITION 65



WARNING Crystalline Silica from bricks, cement, and other masonry products may be harmful to your health as determined by California Proposition 65. When using sharpener wheel devices, it is recommended that you wear the correct NIOSH approved respirator.

GENERAL SAFETY RULES



Failure to follow these rules may result in serious injury.

1. Read and understand the owner's manual.
2. Never allow anyone to operate the Blade Sharpener that has not read and fully understood the owner's manual. Operators must give their full attention while using the Blade Sharpener.
3. Wear protective clothing. Do not wear clothing or jewelry that will entangle in the rotating wheel.
4. Wear safety glasses with side shields to reduce the risk of injury from thrown objects or dust particles.
5. Wear a NIOSH approved respirator for the type of sharpener wheel you are using.
6. Use the appropriate hearing protection if required. Refer to OSHA standards.
7. Check for damaged parts before using the machine. Do not use the machine if any parts are damaged.
8. Be certain that the wheel guard is in place.
9. Feed the work piece against the direction of the rotating sharpener disk.
10. Always use this Blade Sharpener in a well ventilated area.
11. Remove dust particles from your skin after each use.
12. Use only wheels suitable for 3600 rpm of rotation speed. Wheels must not be greater than 8" dia.
13. Use only wheels that have a 5/8" bore. Do not modify sharpener wheel bores or the mounting shaft diameter to accommodate other sharpener wheel bores.
14. Inspect the sharpener wheel before each use. Do not use cracked or damaged sharpener wheels.
15. Do not stand in the direct line of the wheel for the first minute after turning on.
16. Do not use the side of the sharpener wheel at any time.
17. Be certain that the motor switch is in the "off" position before plugging in the Blade Sharpener.
18. Outside of the USA, check with local and national codes for the required safe use and electrical requirements.



DANGER Do not operate this machine in the rain or in damp locations. Do not remove the grounding plug or bypass the grounding plug with an electrical adaptor.

UNPACKING, INSPECTION, and FIRST START-UP

After unpacking the **S90** Blade Sharpener inspect it for any damage or loose components. Nuts, bolts and screws may be tightened with the correct tools. Inspect to see that the Sharpener Wheel is free to rotate without contacting the frame or cover. Be certain that the Sharpener Wheel is not chipped or cracked. Be certain that the electrical cord has no sign of damage such as cut insulation or exposed wires. A damaged electrical cord must be replaced. Do not stand in front of the Sharpener Wheel when turning the machine on for the first time.

ADJUSTING THE WHEEL HEIGHT

Failure to loosen all four (4) adjustment knobs may result



Adjustment Knobs



Adjustment Wheel

CAUTION

1. When adjusting the wheel height by the handle, loosen bolts on both sides of the handle; then turn the handle to adjust the wheel height.
2. After adjusting the wheel height, tighten bolts on both sides of the handle.
3. After adjustment, ensure that bolts on both sides are securely tightened before operating the machine.

OPERATION OF BLADE SHARPENER

WARNING

Never operate the Blade Sharpener unless the Wheel Guard is properly in place. Operating without the guard in place can cause serious injury.

1. Turn on the Blade Sharpener, selecting the direction of rotation based on the cutting surface you will be using.
2. Allow the Sharpening Wheel to rotate for one minute before using it, to be certain that the wheel has not been severely damaged.
3. Be certain to hold the work piece firmly such that any sudden or unexpected movements will not cause personal injury.
4. Feed the work piece into the direction of the rotating wheel.
5. Work piece may become hot after it has touched the Sharpening Wheel.

MAINTAINING YOUR BLADE SHARPENER

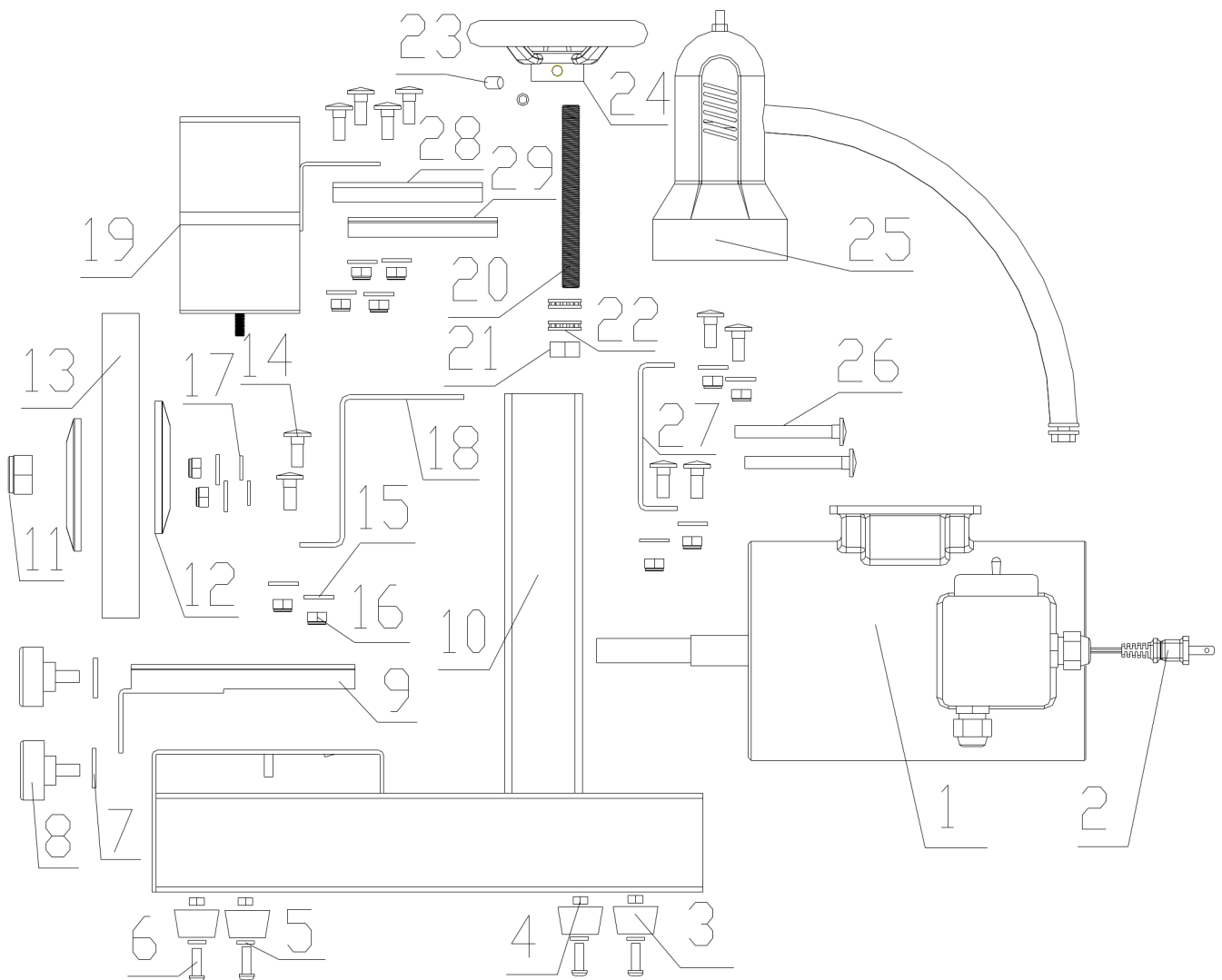
⚠ CAUTION

To minimize the chance of injury always perform maintenance and adjustments with the on/off switch in the "off" position and the motor unplugged.

Routine Maintenance:

1. Keep your Blade Sharpener clean of dust and contamination.
2. The Sharpening Wheel should be inspected for uneven wear that would cause an unbalanced condition while operating.
3. The Sharpening Wheel should be inspected for chips and cracks that could cause debris to become dislodged.

ILLUSTRATED PARTS LIST



Bradley Blade Sharpener Model S90

Parts List

Ref. No.	Part No.	Description	Quantity	Remark
1	6101	Motor-AC	1	
2	6102	Power cord	1	
3	6103	Feet, Rubber	4	
4	6104	Nut, Hex.M6	4	
5	6105	Washer, Flat-M6x12mm O.D.	4	
6	6106	Bolt, M6*20	4	
7	6107	Washer, Flat-M8x25mm O.D.	2	
8	6108	Knob, Knurled-29mm O.D./M8 thread	2	
9	6109	Blade Support	1	
10	6110	Frame	1	
11	6111	Nut, Hex.UNF5/8-18, Nylock	1	
12	6112	Flange, $\phi 5/8$ "	1	
13	6113	Wheel, Grinding- $\phi 5/8$ ", Borex8" O.D.	1	
14	6114	Square neck bolt M8x20mm Long	10	
15	6115	Washer, Flat-M8x20 O.D.	12	
16	6116	Nut, Hex.-Nylock M8	12	
17	6117	Washer, Nylon M8 x20 O.D.	2	
18	6118	Front Motor Support	1	
19	6119	Cover, Wheel	1	
20	6120	Rod, Thread-M12x120mm Long	1	
21	6121	Nut, Hex-M12x1.25	1	
22	6122	Bearing	2	
23	6123	Screw, Hex. Socket-M8x10mm Long	2	
24	6124	Height Adjustment Wheel-M12 Thread	1	
25	6125	Lamp	1	
26	6126	Square Neck Bolt M8x70mm long	2	
27	6127	Rear Motor Support	1	
28	6128	Bracket, Left	1	
29	6129	Bracket, Right	1	
30	6130	Wrench	1	not shown
31	6131	Label: "Always Stand In Front"	1	not shown
32	6132	Label: "Maintain Gap"	1	not shown
33	6133	Label: "Forward"	1	not shown
34	6134	Label: "Reverse"	1	not shown
35	6135	Label: "Bradley"	1	not shown
36	6136	Label: "Warning-For your own safety:"	1	not shown
37	6137	Light Bulb	1	not shown

WARRANTY STATEMENT

LIMITED WARRANTY: Havener Enterprises, Inc. warrants that the above product is free from original defect in workmanship and material (excluding the stone) for 12 months from date of purchase. Warranty is void if product has been damaged through causes not arising out of defects in material or in workmanship. Bent parts of product coating and paint are specifically excluded from this warranty. Havener Enterprises, Inc disclaims any consequential damages, arising from the breach of any warranty. (Some states do not allow the exclusion of consequential damages, so the above disclaimer may not apply to you.) During the above mentioned warranty period, the product will either be repaired or replaced with a new or reconditioned model of an equal equity (at Havener Enterprises, Inc's option) when the product is returned (prepaid and insured) with a copy of the original retail invoice, to Havener Enterprises, Inc., 368 S Michigan Ave, Bradley, IL 60915. Phone: 815.935.8383

Havener Enterprises, Inc. • 368 S Michigan Ave • Bradley, IL • 60915 www.havenerent.com

PRODUCT REGISTRATION

CUSTOMER INFORMATION

Name: _____

Business Name (if any): _____

Address: _____

City: _____ State: _____ Zip: _____

Phone Number: _____ Fax Number: _____

Email Address: _____

DEALER INFORMATION (place of purchase)

Dealer's Name (required): _____

Dealer's Address: _____

City: _____ State: _____ Zip: _____

Phone Number: _____

(The remaining dealer information will help you get warranty service faster should you need it.)

DEALER INFORMATION

Product Name and Model Number: _____

Serial Number (required for all mowers): _____

Engine Brand and Size: _____

Engine Serial Number: _____

(Engines are warranted through their respective manufacturers. Please see your engine manual for more details.)

Signature _____ Date of Purchase: _____

KEEP YOUR RECEIPT WITH A COPY OF THIS REGISTRATION FORM

Mail your completed form to:
Havener Enterprises, Inc.
368 S. Michigan Ave.
Bradley, IL 60915

Email your completed form to: Fax your completed form to:
info@havenerent.com 888.785.1348

Your first answer in product service is your authorized Bradley dealer!

Your product warranty is only valid if this form is completed, signed, and returned to Havener Enterprises, Inc. within two weeks of product purchase. See the warranty statement for more details.

☐ Check here to decline communication by mail or email