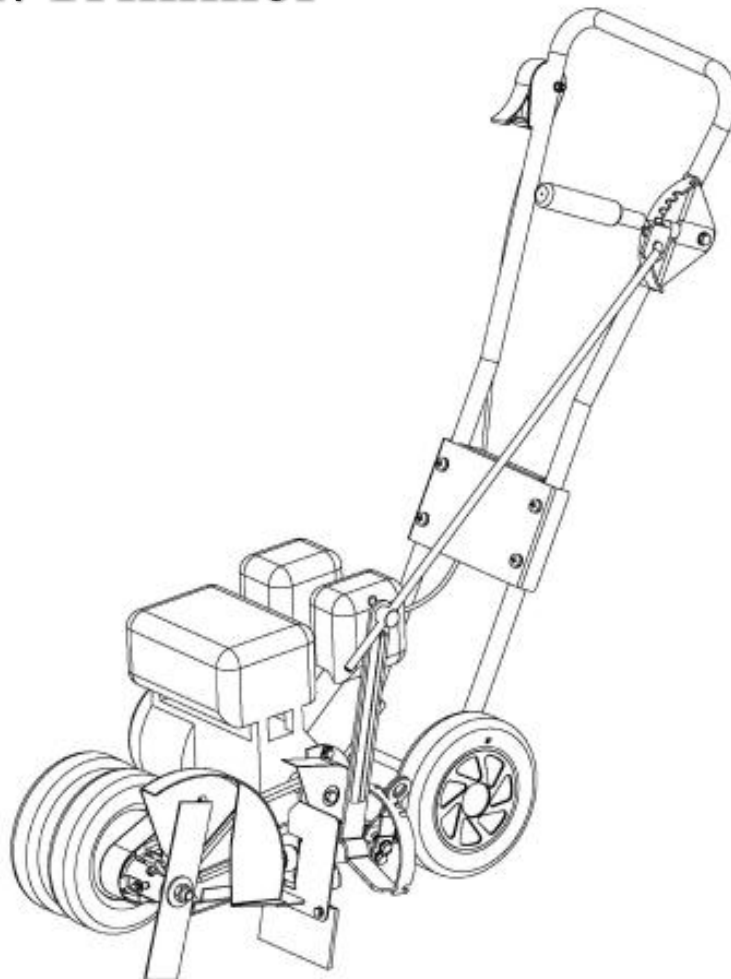




**Havener Enterprises, Inc. • 368 S. Michigan Ave.
Bradley, IL • 60915
815.935.8383**

Walk-Behind Edger/Trimmer



Parts & Owner's Manual

**Congratulations on the purchase of your new
Even Cut Edger**

**Before any warranty service can be authorized you
must register this product with the manufacture.**

Sept. 10th 2023

Owner's Manual For Walk-Behind Edger/Trimmer

TABLE OF CONTENTS

About This Manual	3
Warranty Statement	4
Safety Information	5
Operation of Equipment	6
Assembly	
Attaching The Handle	7
Fill Engine With Oil	7
Installing The Throttle Wire	8
Fuel Specification	8
Operating Your Edger/Trimmer	
Correct Engine Operation	8
Adjusting Cutterhead Angle	8
Clutch And Depth Lever Settings	9
Starting The Engine	9
Engaging the Drive Belt	9
Stopping the Edger	9
Wheel Positioning	10
Curb Riding Position	10
Correct Edger/Trimmer Usage	
Operation of the Trimmer/Edger	11
Maintaining Your Edger/Trimmer	
Maintenance Checklist	11
Spark Plugs	11
Blade Maintenance	12
Changing Blades	12
Lubrication	12
Storage Instructions	12
Edger Illustrated Parts List	13-17
Troubleshooting Check List	18-21
Product Registration	22

About This Manual

This owner's manual is considered a permanent part of the edger. It must be available to all of the operators and/or person(s) servicing the edger. Should the unit be resold, this manual must remain with the unit.

All information, illustrations, and specifications contained in this manual were in effect at the time of publication. The Manufacturer reserves the right to change, modify, and/or discontinue specifications and/or design without notice. If there is a change that has been made to your trimmer which is not shown or reflected in this manual, please see your authorized dealer before operating and/or servicing the equipment.

Congratulations on the purchase of your new Edger/Trimmer. We are confident that this edger will provide you with years of excellent performance, durability, and trouble free service when operated and maintained as directed in this manual.

Should you ever have any questions regarding the operation, maintenance, or safety of your equipment, please contact your authorized dealer who has been specially trained on operation and service of this unit.

A space has been provided below to record information about your new Edger/Trimmer. Please take time to record such information for future reference, especially when you contact an authorized dealer with questions.

Date Purchased: _____

Model Number: _____

Serial Number: _____

Purchased From: _____

Warranty Statement

This edger/trimmer is warranted for one (1) year from the original date of purchase against defects in material or workmanship, when operated and maintained in accordance with the Owner's Manual. The Manufacturer will replace or repair, free of charge, any part of the original equipment returned to us or our authorized servicing representative with transportation or postage prepaid and which upon examination shall be defective. The cost of replacing items that are subject to normal wear, such as but not limited to: air filters, belts, blades, oil filters, and tires, will be borne by the purchaser/owner unless such wear was caused by a defect in material and workmanship.

This warranty does not cover any unit that has been subject to neglect, negligence, misuse, or accident, or that has been operated in any way contrary to the operating instructions as specified in the Owner's Manual. This warranty does not cover any edger that has been altered or modified changing performance or durability. In addition, the warranty is not extended to repairs made necessary by the use of parts or accessories which, in the reasonable judgement of the Manufacturer are compatible with the edger or adversely affect its operation, performance, or durability. This warranty is not transferrable.

The Manufacturer assumes no responsibility or incidental, consequential, or other damages including, but not limited to: expense for gasoline, expense of delivering the equipment to an authorized dealer and expense of returning it to the owner, mechanic's travel time, telephone or communication charges, rental of a like product during the time warranty repairs are being performed, travel, loss or damage to personal property, loss of revenue, loss of the use of the time or inconvenience. There are no other expressed or implied warranties and liability for consequential damages under this warranty and are excluded to the extent exclusions are permitted by law.

No warranty service will be authorized until your registration card has been received by the Manufacturer.

Main technical parameter

Engine: 4HP gasoline	Cutting angle: Adjustable by 5 shifts from 20°-0°/0°-20°
starting mode: Recoil starting	Wheels-Front/Rear: 8"x1-3/4"
Transmission Type: soft belt	Outer Dimension(L x W x H): 1030x460x900mm
Blade: 1 8-3/4" x 2", 1/2" center hole	Outer Dimension(L x W x H):40-1/2"x18-1/10"x35-1/2"
Noise: ≤70db	Packing Measurement(L x W x H):700x460x410mm
Net Weight: 31kg;68-1/2lbs	Packing Measurement(L x W x H):27-1/2"x18-1/10"x16"

Safety Information

Read This Manual Carefully And Thoroughly Before Operating The Edger!

Training

1. Carefully and thoroughly read the owner's manual. Allow adequate time to fully understand the controls and operation of the equipment.
2. Never allow anyone to operate the edger that has not read and fully understood the owner's manual.
Never allow children to operate the edger.
3. Keep area of operation clear of all persons, particularly small children and pets.

Before Use of Equipment

Operator:

Wear protective clothing while edging. Long trousers and safety glasses will help reduce the risk of injury from thrown objects. It is recommended that steel toe shoes with thick soles or some other type of substantial footwear be worn to help protect your feet and maintain traction on slopes or uneven ground. Always wear hearing protection.

Edging Area:

Thoroughly inspect the area where the equipment is to be used. Look for items such as stones, sticks, wire and other foreign objects. When struck by the edger, these and other objects may become projectiles that could lead to serious injury and/or death.

Operation:

For your safety and the long life of your equipment, always inspect the edger before each use. Before inspection, make sure it is on a flat and level surface, the blades are disengaged, the ignition switch off with the key removed, and the spark plug wire is off of the spark plug(s) and hidden so that accidental contact can not be made.

General Condition:

- Walk around the edger looking for any fluid spills or leaks on or underneath the edger. Remove any and all excessive debris, dirt, and/or fluids.
- Look for signs of damage or excessive wear. Check the tightness of all nuts, bolts, pins, and screws. Tighten any that may be loose and replace any that may have been lost during use.
- Be sure the safety interlock controls are operating properly so that the engine can not be started unless the ground speed control lever is in neutral and the blades disengaged.
- Check the edger blades for any damage or abnormal wear and replace in sets so that they are balanced.
- Check all belts for proper wear and correct tension.
- Check engine oil and air filters

Operation of Equipment



DANGER: GASOLINE IS HIGHLY FLAMMABLE AND EXPLOSIVE. DO NOT ADD FUEL WHILE THE ENGINE IS RUNNING OR IS HOT. KEEP OPEN FLAMES, SPARKS, AND HEAT AWAY FROM THE FUEL AND STORE FUEL IN CONTAINERS SPECIFICALLY DESIGNED FOR THAT PURPOSE. ADD FUEL OUTDOORS ONLY AND IF THE FUEL IS SPILLED, DO NOT START THE ENGINE. MANUALLY PUSH THE EDGER AWAY FROM THE SPILL AND IMMEDIATELY WIPE UP.

Do not operate the engine in a confined space where dangerous carbon monoxide fumes can collect. Carbon monoxide is odorless, tasteless, and can be fatal.

Edge only in daylight.

Disengage cutterhead drive before attempting to start the engine.

Watch for traffic when crossing surfaces other than grass, (i.e. transporting,) loading a trailer or vehicle, or when the edger is not in use.

Never operate the edger unless the blade guard, belt guards, and debris guards are properly in place.

Reduce speed on slopes to avoid tipping or loss of control.

Do not change the governor settings or over speed the engine.

Always stop the engine whenever you leave the edger, even for a moment.

Never direct discharge of material toward bystanders nor allow anyone near the machine while in operation

To help reduce the risk of a fire hazard, keep the engine and the area around the engine free of grass, leaves, or any other type of foreign material.

Beware of cutting edges. Always wear gloves for safety when performing blade maintenance activities. Beware on multiple blades units since the rotation of one blade may cause the rotation of the other blade.

Always stop the blade when crossing gravel driveways, roads, or walk ways.

Never store the edger with gasoline in the tank in a building where fumes may reach an open flame or spark. Be sure engine has cooled before storing.

Assembly

NOTE: Reference to Left or Right side of the machine is from the operator's position at the handle, facing for-ward.

The edger, except the handle and throttle control is fully assembled, packed and shipped in one carton.

Attaching The Handle

1. Remove handle brace, nuts, and bolts. Align the handle, lower support, and handle brace holes. Use all six nuts and bolts. Leave bolts loose until steps 2 and 3 are completed (Figure 1).
2. Install control rod into upper and lower pivot holes and secure with cotter pins (Figure 1). Oil pivots lightly before installing rod.
3. Move clutch-depth lever into rear notch of quadrant on handlebars. Move cutterhead angling lever to top notch of quadrant.
4. Remove spark plug wire from spark plug. Move throttle to "OFF" position. Check clutch operation by pulling recoil starter rope. If blade turns when depth lever is in top notch, loosen handle bolts and pull towards operator. Tighten bolts and check clutch operation again.
5. Slip on handle grips.

NOTE: Make sure blade does not turn when lever is in top notch-disengaged.

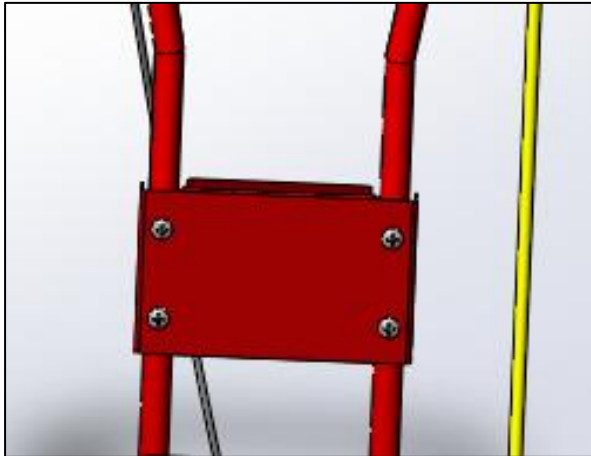


Figure 1

Fill Engine With Oil

NOTE: There is no oil in engine crankcase.

1. Follow instructions in the engine manual for correct grade of oil, oil filling and oil changing
2. Do not mix oil with gasoline.

Installing The Throttle Wire

1. If the throttle cable is not attached to the engine carburetor, follow the instructions in the engine operating manual. Some throttle cables can not be attached before shipping.

Fuel Specification

1. Follow fueling instructions in the engine manual.

⚠ DANGER: GASOLINE IS HIGHLY FLAMMABLE AND EXPLOSIVE. DO NOT ADD FUEL WHILE THE ENGINE IS RUNNING OR IS HOT. KEEP OPEN FLAMES, SPARKS, AND HEAT AWAY FROM THE FUEL AND STORE FUEL IN CONTAINERS SPECIFICALLY DESIGNED FOR THAT PURPOSE. ADD FUEL OUTDOORS ONLY. REPLACE GAS CAP SECURELY AND WIPE UP ALL SPILLED FUEL.

2. Always clean area around fuel cap before removing it to prevent excessive amounts of dirt from entering fueling system. Also insure that the fuel storage container you are using is clean and in good condition.

Engine Operation

CAUTION: Before starting engine, become totally familiar with all controls. Read this Operator's Manual thoroughly. Always check engine oil level before starting engine.

Operating Your Edger/Trimmer

Correct Engine Operation

CAUTION: Always disengage edger/trimmer blade and shut engine off when leaving the edger/trimmer unattended, even for just a few minutes. Don't allow children or unauthorized persons to operate this machine.

Adjusting Cutterhead Angle

Before starting the engine you must adjust the cutterhead angle. The cutterhead angling lever enables the operator to position the blade horizontally for trimming or edging in several vertical positions. The lever is located on the left hand side of the frame.

Cutterhead Angle Adjustment



⚠ Never adjust cutterhead angle when engine is running

Clutch And Depth Lever Settings

The clutch and depth lever is used to engage and disengage the drive belt which operates the blade. It is also used to regulate the depth of edging and height of trimming.



Starting The Engine

1. Be sure the clutch lever is in the rear DISENGAGED position before starting the engine.
2. Manually pull out choke on engine.
3. Grasp the recoil starting handle and pull quickly. Return the handle slowly. If the engine fails to start after three or four pulls, lower the throttle to the detent full throttle (Fast) position
4. Once the engine starts, push the choke to the "OFF" position. Use the SLOW position to idle the engine.

CAUTION: Always start the edger/trimmer slowly. Sudden starts can be damaging to the equipment and could cause loss of operator control.

Engaging the Drive Belt

1. Move clutch and depth lever forward to engage drive belt and blade.
2. The notches in the base of the lever allow adjusting for depth or cut or height for trimming.

Stopping the Edger

1. Disengage edger/trimmer clutch and depth lever.
2. Move the throttle control to "STOP" position. Make sure the engine is stopped and blade is not rotating before leaving the operating position.

Wheel Positioning

The wheel adjusting spacer should be centered between the wheels when edging in the vertical position. Wheels must be in the dual position to the right when edging with cutterhead in an angle position or trimming (horizontal position).

⚠ DANGER: DO NOT CHANGE THE WHEEL POSITION WHEN THE ENGINE IS RUNNING.

1. Remove the spacer from between the wheels by lifting on the spacer with open side down.
2. Slide the left front wheel on the axle toward the right wheel and install the spacer on the axle between the frame and the wheel.

CAUTION: Before starting the engine be sure the wheels and cutter head are positioned so the blade will not strike the wheels.



Curb Riding Position

1. Remove the spacer from between the front wheels. Slide the right wheel toward the left wheel and replace the spacer between the wheel and right frame. Only vertical edging can be done in this position.

NOTE: As pictured above, wheels are positioned to the right for trimming. The wheels are positioned to the left for curb trimming/edging.

Correct Edger/Trimmer Usage

Operation of the Trimmer/Edger

⚠ DANGER: KEEP ALL SHIELDS IN PLACE. NEVER ATTEMPT TO CLEAR DISCHARGE AREAS OR EDGER/TRIMMER BLADE WITHOUT DISENGAGING THE EDGER/TRIMMER AND STOPPING THE ENGINE.

For best results when edging, adjust blade to 20° angle cut and adjust the cutting depth of the blade to within 1/2" to 1" deep. (With a new blade use the third notch on the adjustment bracket.)

To avoid unnecessary stress on the engine and blade wear don't cut too deep.

Re-adjust cutting depth as blade begins to wear at tips.

Avoid edging or trimming in wet grass so the blade guard will not clog.

Always push edger/trimmer at moderate walking speed for the best cut.

For edging around shaped flower beds or curved areas:

Before starting the engine place the wheels closer together by removing the wheel spacer clip on the front axle.

Slide wheels to side away from blade and replace spacer.

After starting the engine, set blade depth and slightly lift the rear wheels to add angles around corners.

Maintaining Your Edger/Trimmer

CAUTION: To minimize the chance of injury always perform maintenance and adjustments with the engine off unless instructed otherwise.

Maintenance Checklist

1. Refer to the engine manual for engine maintenance instructions.
2. Correct grade of oil and gasoline is included in the instructions.

NOTE: Check the oil level of the engine every time the edger/trimmer is used. Improper oil levels can cause extensive internal damage to the engine, Failure to change the engine oil at recommended intervals can lead to serious damage.

Spark Plugs

NOTE: Check the spark plug after 50 hours of operation. Replace the spark plug at 100 hours operating intervals or sooner if inspection shows excessive wear.

1. Always clean area around the spark plug before removal to prevent dirt from entering the engine. Use a spark wrench to remove and install plug.
2. Always check spark plug gap before installing a new plug or reinstalling the original plug. Use a spark plug gap gauge to adjust the electrode air gap as indicated in the engine manual.

Blade Maintenance

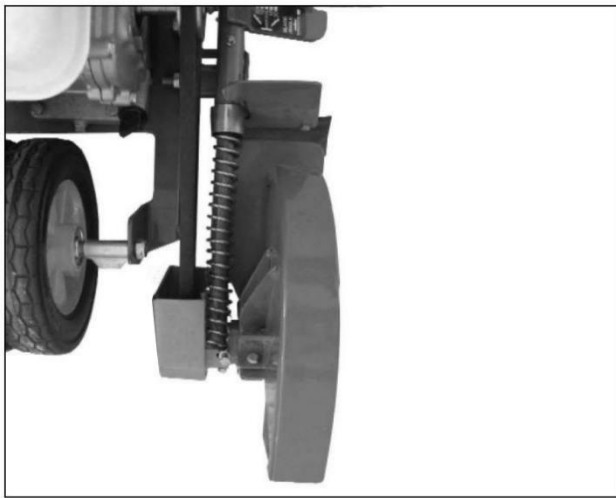
CAUTION: Beware of the cutting edges on the blades. Always wear work gloves when handling blades.

Changing Blades

1. Place wrench on the inside of the cutterhead shaft. and a wrench on the blade nut. Turn to loosen nut. Remove outer washer and old blade.
2. Insert new blade. Place outer washer the same direction as removed and tighten nut as snug as possible.

Lubrication

1. Use #2 multi-purpose grease on cutterhead body.
2. Oil all exposed bearings, linkage and front wheels.
3. The two sealed bearings on the cutterhead do not require lubrication.



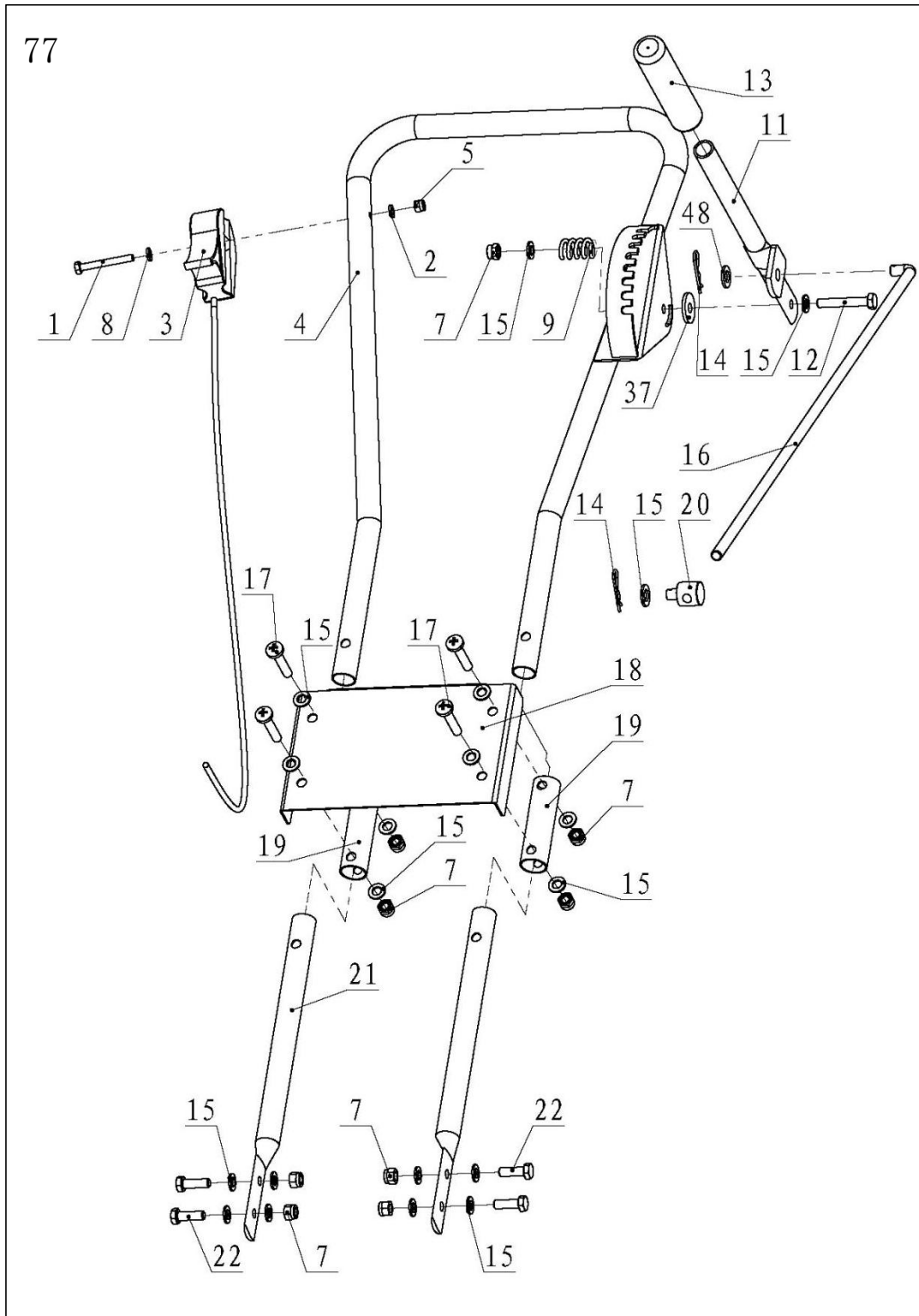
Cutting Head Lubrication Points

Storage Instructions

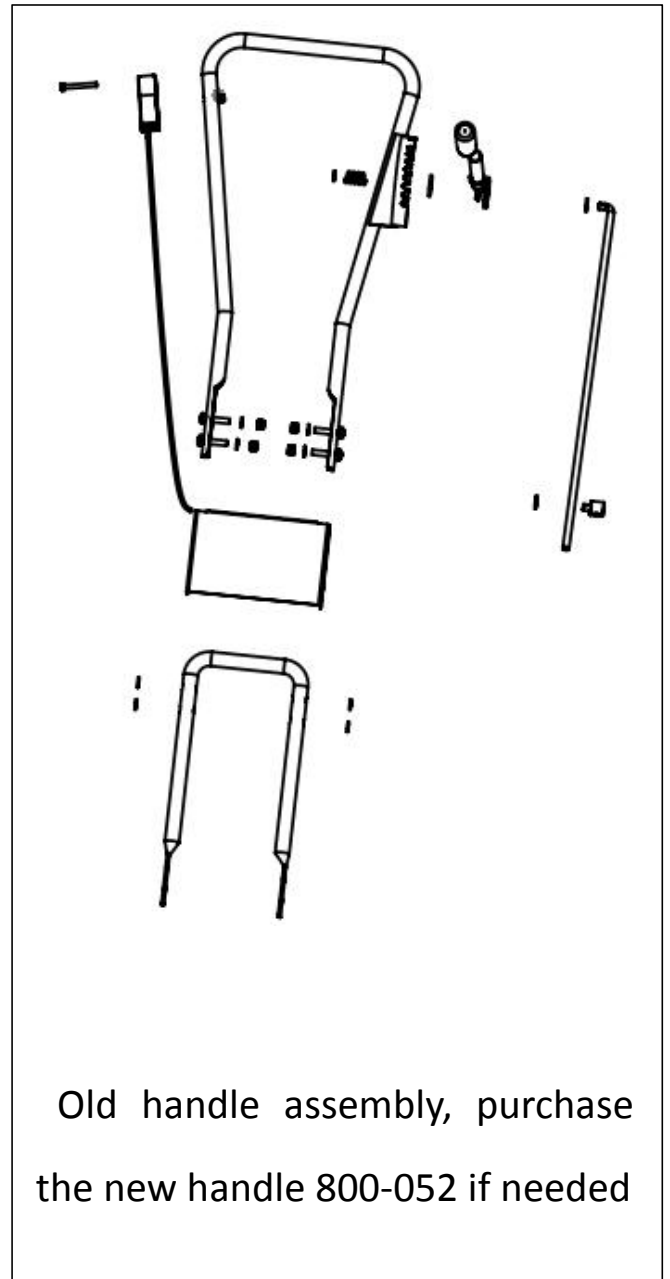
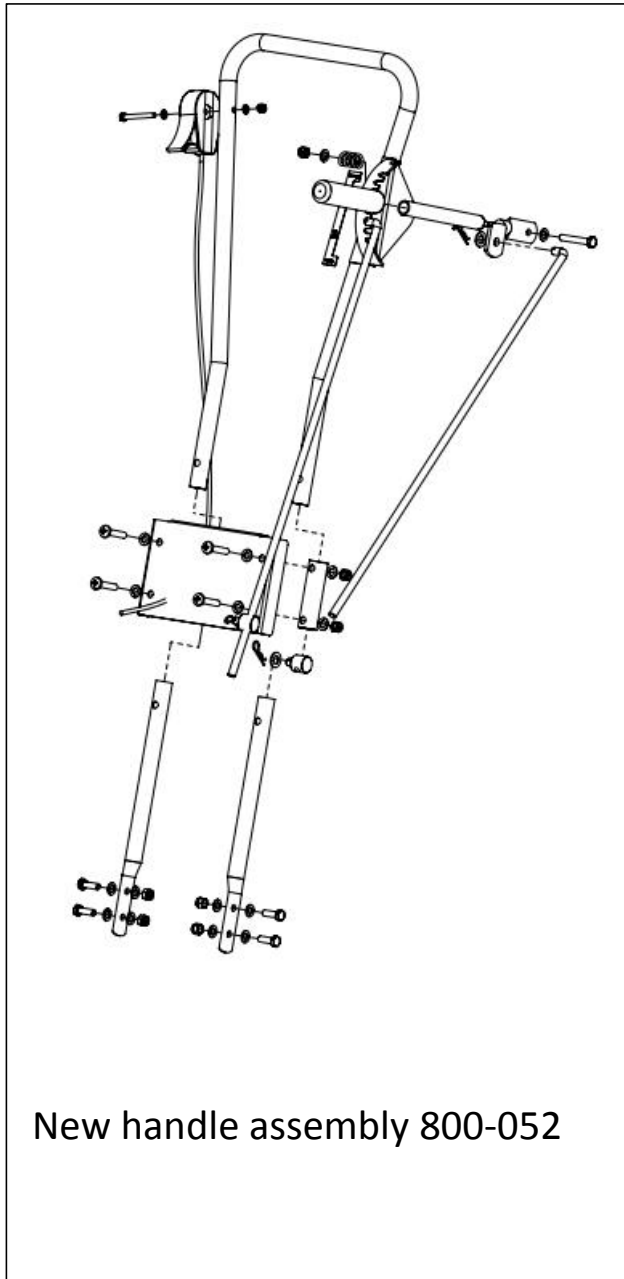
Edger/trimmers stored for any length of time should be completely drained of fuel to prevent gum deposits from forming on the carburetor and fuel tank. Follow these steps before starting engine.

1. Drain fuel tank completely.
2. Run the engine until it stops to clean all gasoline out of carburetor.
3. While the engine is still warm, drain the crank case.
4. Remove the spark plug. Pour one ounce of oil into the cylinder. Pull starter rope on the engine to spread the oil. Replace the spark plug.
5. Clean dirt from cylinder and cylinder head fins and blower housing.

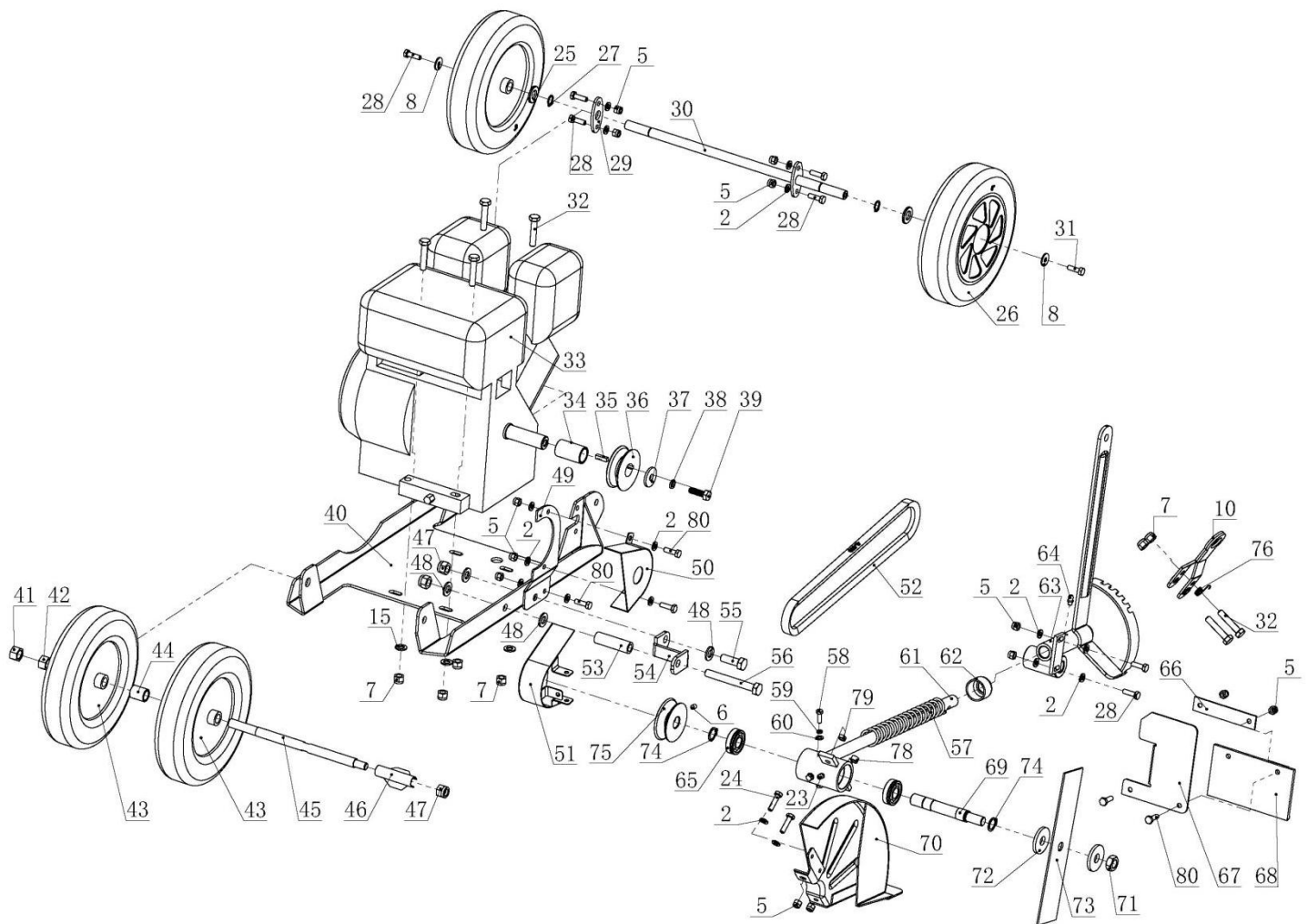
Edger Illustrated Parts List Handle Assembly



Edger Illustrated Parts List Handle Assembly



Edger Illustrated Parts List Airframe Assembly



Edger Parts List

Item	Part NO.	Description	Qty
1	200-055	Hexagon Bolt M6-1x50 GB5782	1
2	200-042	Plain Washer 6 GB95	16
3	800-001	Throttle Control	1
4	800-002a	Handle Weldment	1
5	200-009	Nylon Nut M6 GB889	15
6	200-345	Screw M6x8 GB78	1
7	200-030	Nylon Nut M8 GB889	15
8	200-331	Plain Washer 6 GB96	3
9	300-070	Compression Spring	1
10	800-030	Lever angle shifting	1
11	800-003	Handle weldment	1
12	200-079	Hexagon Bolt M8-1.25x50 GB5782	1
13	800-004	Grip	1
14	200-069a	Hair Pin Cotter	2
15	200-021	Plain Washer 8 GB95	22
16	800-005	Rod, Cluth & Depth	1
17	200-344	Bolt M8-1.25x40 GB818	4
18	800-007a	Cross Brace for Handle	1
19	800-043	The Handrail Connecting Sleeve	2
20	800-006	Swivel	1
21	800-008a	The Lower Handrail	2
22	200-048	Hexagon Bolt M8-1.25x20 GB5783	4
23	200-348	Grease fitting M8 JB/T7940.1	1
24	200-313	Hexagon Bolt M6-1x25 GB5783	2
25	200-071	Plain Washer 12 GB95	2
26	800-010A	Rear Wheel Assembly	2
27	200-182	Snap Ring 12 GB 894.1	2
28	200-036	Hexagon Bolt M6-1x20 GB5783	7
29	800-044	The Rear Wheel Shaft Fixing Plate	1
30	800-011a	Rear Axel	1
31	800-045	The Left-hand Bolt M6-1x20	1
32	200-332	Hexagon Bolt M8-1.25x40 GB5782	6
33	800-051	Engine	1
34	800-046	Engine Cushion	1
35	800-013a	Key 4.78x5x18 GB1096	1
36	800-012	Engine Pulley	1
37	800-061	Washer 8.2x32x2.5	2
38	200-024	Lock Washer 8 GB93	1
39	800-047	Bolt UN 5/16-24	1
40	800-016	Deck	1

41	600-205-0012	Nylon Nut M12 DIN985	1
42	200-183	Nut M12 GB6170	1
43	800-017a	Front Wheel	2
44	800-048	Front Wheel Bushing	1
45	800-018	Front Axle	1
46	800-019	Front Wheel Spacer	1
47	200-006	Nylon Nut M10 GB889	3
48	200-010	Plain Washer 10 GB95	4
49	800-014	Bracket, Engine Pulley Guard	1
50	800-021	Guard, Engine Pulley	1
51	800-015	Cutterhead Pulley Guard	1
52	800-020	Drive Belt 4L-300R	1
53	800-028	Pivot Hub	1
54	800-032	Brace Cutterhead	1
55	200-103	Hexagon Bolt M10-1.5x30 GB5783	1
56	200-187	Hexagon Bolt M10-1.5x80 GB5782	1
57	800-026	Spring, Head Recoildfy	1
58	200-087	Hexagon Bolt M5-0.8x16 GB5783	3
59	200-184	Lock Washer 5 GB93	3
60	200-138	Plain Washer 5 GB95	3
61	800-024	Mandrel, Head	1
62	800-027	Cup	1
63	800-029	Body, Cutterhead	1
64	200-026	Grease Fitting M6 GB1152	1
65	200-123	Bearing 99502	2
66	800-036	Presssing Plate	1
67	800-034	Deflector, Debris Sweep	1
68	800-035	Safety Flap	1
69	800-023	Shaft	1
70	800-033	Blade Guard Main	1
71	800-054	Blade fix nut	1
72	800-049	Blade Washer	2
73	800-025	Cutting Blade	1
74	200-047	Snap Ring 16 GB894.1	2
75	800-022	Cutterhead pulley	1
76	800-031	Torsion spring	1
77	800-052	Handrail assembly	1
78	800-055	blade cover bushing I	1
79	800-056	blade cover bushing II	1
80	600-002-0616	Hexagon Bolt M6-1x16 GB5783	5

800-053



TROUBLE SHOOTING

Problem	Possible Cause	Solution
Engine Does Not Start	Fuel tank empty	Fill fuel tank
	Throttle control not in the choke position	Move throttle control to choke
	Carburetor improperly adjusted	Remove spark plug, dry the plug Crank engine with plug removed and throttle in OFF position.
	Engine flooded	Replace spark plug and re-start
	Spark plug wire loose or disconnected	Connect spark plug wire
	Bad spark plug	Replace
	Dirty air filter	Replace
	Clogged fuel filter	Replace
	Bad/Old fuel	Drain and refill with fresh fuel
Engine Starts Hard Or Loses Power	Dirt or water in the fuel tank	Drain and clean fuel tank
	Clogged or dirty fuel filter	Replace
	Air filter dirty	Replace
	Faulty spark plug	Replace
	Incorrect oil level	Check and adjust
Engine Overheats	Obstruction from air passage in shrouds	Remove obstruction
	Incorrect oil level	Check and adjust
	Dirty air filter	Check and replace
	Faulty spark plug	Replace
	Cooling fans are dirty	Clean fans

TROUBLE SHOOTING

Irregular Running	Dirt or water in the fuel tank	Drain and clean fuel tank
	Dirty air filter	Replace
	Vent in gas cap and/or carburetor plugged	Clear
Idles Poorly	Carburetor idle speed too slow	Check and adjust
	Spark plug gap too close	Check and adjust
Hesitates at High Speeds	Dirty air filter	Replace
	Carburetor improperly adjusted	Adjust
	Spark plug faulty or gap too wide	Check and adjust and/or replace



BRADLEY MOWERS PRODUCT REGISTRATION

CUSTOMER INFORMATION

Name: _____
Business Name: _____
Address: _____
City: _____ State: _____ Zip: _____
Phone Number: _____ Fax Number: _____
Email Address: _____

DEALER INFORMATION(place of purchase) *required

Dealer's Name: _____
Dealer's Address: _____
City: _____ State: _____ Zip: _____
Phone Number: _____

(The remaining dealer information will help you get warranty service faster should you need it.)

PRODUCT INFORMATION

Product Name and Model Number: _____
Serial Number: _____
Engine/Motor Brand and Size: _____
Engine Serial Number: _____

Engines hydraulic pumps, and batteries are warranted through their respective manufacturers. Please contact the manufacturer for more details.

Signature _____ Date of Purchase: _____

KEEP YOUR RECEIPT WITH A COPY OF THIS REGISTRATION FORM

Mail your completed form to:
Havener Enterprises, Inc.
368 S. Michigan Ave.
Bradley, IL 60915

Email your completed form to;
info@bradleymowers.com

Fax your completed form to:
888.785.1348

Complete your registration form online at www.bradleymowers.com

Warranties should be performed by an authorized Bradley Mowers dealer. All other warranty service requires prior approval.

Your product warranty is only valid if this file is completed signed, and returned to Havener Enterprises, Inc. within two weeks of product purchase. See the warranty statement for more details.

Your information may be collected but never shared outside of Havener Enterprises, Inc. and its subs subsidiaries

NOTES