



# Parts and Owners Manual

MOWER MODEL:

SERIAL:

ENGINE MODEL & HP:

DATE PURCHASED:

PURCHASED FROM:

---

---

---

---

**You must receive special training from the dealer before  
operating this mower.**



# COMMERCIAL MOWER OPERATORS MANUAL & PARTS LIST

**THIS MOWER IS INTENDED FOR COMMERCIAL USE  
SPECIAL TRAINING IS REQUIRED TO OPERATE THIS MOWER  
SAFELY**

**MOWER MODEL:**

**SERIAL:**

**ENGINE MODEL & HP:**

**DATE PURCHASED:**

**PURCHASED FROM:**

---

---

---

---

---

## IMPORTANT INFORMATION ABOUT THIS MANUAL

This owner's manual is considered a permanent part of mower. It must be available to all of the operators and/or person(s) servicing the mower. Should the mower be resold, this manual must remain with the mower. All information, illustrations, and specifications contained in this manual were in effect at the time of publication. reserves the right to change, modify, and discontinue specifications and design without notice. If there is a change that has been made to your mower that is not shown or reflected in this manual, please see your authorized dealer before operating and/or servicing of equipment. Congratulations on the purchase of your new Commercial Mower. We are confident that this mower will provide you with years of excellent performance, durability, and trouble free service when operated and maintained as directed in this manual. Should you ever have any questions regarding the operation, maintenance, or safety of your mower, please contact your authorized dealer. A space has been provided above to record information about your new . Please take time to record such information for future reference, especially when you contact an authorized dealer with questions. **You must receive special training from the dealer before operating this mower.**

## WARRANTY STATEMENT

This type mower are warranted for one (1) year from the original date of purchase for commercial use one year for industrial and rental use against defects in material or workmanship, when operated and maintained in accordance with the Owner's Manual. will provide, free of charge, any part, no labor will be considered, of the original equipment returned to us or our authorized servicing representative with transportation or postage prepaid and which upon examination shall be defective. The cost of replacing items that is subject to normal wear, such as but not limited to; air filters, belts, blades, oil filters, cables, tubes and tires, will be borne by the purchaser/owner. Engines are warranted by the engine manufacturer. Please see engine owner's manual for engine warranty. This warranty does not cover any mower that has been subject to neglect, negligence, misuse, or accident, or that has been operated in any way contrary to the operating instructions as specified in the Owner's Manual. This warranty does not cover any mower, which has been altered or modified, changing the performance or durability. In addition, the warranty is not extended to repairs made necessary by the use of parts or accessories, which, in the reasonable judgment of are compatible with the mower or adversely affect its operation, performance, or durability. This warranty is not transferable. assumes no responsibility or incidental, consequential, or other damages including, but not limited to: expense for gasoline, expense of delivering the mower to a authorized dealer and expense of returning it to the owner, mechanic's travel time and labor, telephone or communication charges, rental of a like product during the time warranty repairs are being performed, travel, loss or damage to personal 2 property, loss of revenue, loss of the use of the time or inconvenience. There are no other expressed or implied warranties and liability for consequential damages under this warranty and are excluded to the extent exclusions are permitted by law. Warranty service will be authorized only when proof of purchase is provided. The proof of purchase must contain the

model number, serial number, and date of purchase, purchase price and from whom the unit was purchased. This warranty is limited to parts replacement only. Please retain the defective parts until the replacement parts are received. In some case, the parts may be requested to be returned. If parts are requested to be returned, they must be shipped prepaid and insured. Cost of shipping these parts is the responsibility of the owner or purchaser of the mower.

### **IMPORTANT OWNER AND DEALER INFORMATION:**

Please note that the warranty on this unit is for parts replacement only. No additional expenses or charges will be considered. Additional expenses and charges include but are not limited to, labor, freight, and travel time and shop expenses. These charges must be borne by the mowers owner or purchaser. If parts replacement is required under this warranty, please send a request to your distributor. The request must contain the following information: part number, quantity, model number, serial number, copy of original bill of sale and a description of the failure. Replacement parts will be shipped to you at no charge. Installations of these parts are not covered under warranty.

### **IMPORTANT INSTRUCTIONS:**

Read the owners manual and make it readily available for future reference.

Be familiar with the operation of the mower. Extreme emphasis should be placed on operator safety and the mower's safety features.

Know the correct mower and engine service and maintenance requirements, and be able to perform or have preformed the service and recommended lubrication as required.

### **GENERAL**

Before servicing, check the mower for such items as belt tension and cutting height adjustment, to be sure mower functions properly. Check attachment of the rear guard and inspect to make sure the chute guard is secure.

### **HANDLEBARS**

This mower is shipped with the handlebars detached. Handlebars must be bolted into position before use. All controls must be properly mounted to the handlebars before starting.

### **Repairs or Service**

**IMPORTANT:** If service or parts are required, be prepared to supply the service person with the model and serial number of the mower and engine. Include a complete description of the problem encountered.

### **TRAINING**

Read the operating and service instruction manual carefully and completely. Be familiar with all safety controls and the proper use of the equipment.

**NEVER** let a child operate a power mower.

Keep the area of operation clear of all persons, especially small children and pets.

### **PREPARATION**

1. Never operate your power mower unless **ALL GUARDS** are securely attached Do not remove rear guard !
2. Thoroughly inspect area where the mower will be used. Remove all stones, sticks, bones and other foreign objects. .
3. Wear long pants and substantial shoes when operating the mower. Do not operate mower-wearing sandals, tennis shoes, sneakers, shorts or loose-fitting clothing that could be caught in moving parts.
4. Check gas level before starting engine. Do not fill gas tank indoors, when the engine is running, or while the engine is still hot, Wipe off any spilled gasoline before starting engine.
5. Mow only in daylight.
6. Never operate a mower in wet grass. Always be sure of your footing, keep a firm hold on the handle, and walk, **NEVER RUN!**
7. **NEVER** operate a mower without proper eye and hearing protection, i.e.: safety glasses face shield or goggles.

## STARTING & STOPPING

1. Fill the engine crankcase with oil. Refer to the engine instruction manual supplied with this mower.
2. Fill the gas tank. Refer to engine manual.
3. Pump primer bulb on engine, or set throttle control to proper position.

## TO START

1. Hold lever against the handlebar and pull recoil starter cord **See figure 1**

**NOTE:** Return cord slowly-DO NOT LET HANDLE SNAP !



**Figure1**



**Figure 2**



**Figure 3**

**REMEMBER:** The lever control must be held against handlebar to operate the mower. **See Figure 2**  
When the lever is release, the engine and blade will stop. **See Figure 3**

## GOING FORWARD:

Slowly press the control lever down and the mower will start to move forward.

## WORK:

start lawn mower, the pressure control line handle the left arm, while the clutch linkage is pressed, push the clutch control lever, pull the clutch, the blade began to work, lawn mower for mowing.

## TO STOP

1. Release all lever controls, engine, and blade will stop. **SeeFigure 2**
2. **IMPORTANT:** Release the lever control this will STOP the blade and engine. If this feature fails to function, **DO NOT OPERATE MOWER.** Disconnect the spark plug wire and see your dealer.

**REMEMBER:** The safety features on this mower are for your protection. Do not tamper with or remove these components.

## OPERATION

1. Do not change the engine governor setting or over speed the engine.
2. Do not put hands or feet near or under rotating parts. Stay clear Of discharge area while the engine is running (Fig.4).
3. Stop the mower when crossing gravel drives, walks, roads, or any other area where thrown objects may be a hazard.
4. After striking a foreign object, or if the mower vibrates abnormally, stop the engine, disconnect, and secure the spark plug wire, Inspect the mower for any damage before restarting.
5. Before cleaning, repairing, or inspecting, make certain the blade and all other moving parts have come to a complete stop. Disconnect the spark plug and secure the wire away plug to prevent accidental starting.
6. Do not run the engine indoors.
7. Mow across the face of slope, never up and down. Exercise extreme caution when changing directions on slopes. Do not mow excessively steep slopes.



**FIGURE 4**

## MAINTENANCE & STORAGE

1. In order for your safety controls to function at the peak of efficiency, they must be inspected and adjusted regularly. Initial inspection shall take place after the first two (2) hours. Belt tension is a very critical part of your safety inspection, and should be checked frequently.
2. Keep all nuts, bolts and screws tight to assure safe mower operation.
3. Never store equipment with gas in the tank or in a building near a spark or flame. Allow the engine to cool before storing in any enclosure.
4. To reduce fire hazard, keep mower free of grass, leaves or excessive grease.
5. Have your mower service and inspected every year by your authorized dealer, and if you perform repairs yourself, use only replacement parts.

**IMPORTANT:** If service or parts are required, be prepared to supply the service person with the model and serial number of the mower and engine. Include a complete description of the problem encountered.

## **ENGINE GENERAL**

Follow the engine manual supplied with this mower for proper engine maintenance and service. The engine on your is an item for which the manufacturer maintains a national service organization. FOR ENGINE PARTS AND REPAIR INSTRUCTIONS, CONTACT THE ENGINE MANUFACTURER'S DEALER.

Your engine is designed for long lasting service when given proper care. For the proper care instructions, READ YOUR ENGINE MANUAL !

## **SPECIAL SERVICE INSTRUCTIONS**

Check oil level before every mowing.

Change Oil every eight to ten hours of operation.

Use high quality engine oil.

Use unleaded gasoline.

Keep your engine clean. Dirt and grass accumulation can result in serious damage to the precision parts of your engine.

## **ENGINE SERVICE**

Refer to engine owner's manual.

**CAUTION:** BE SURE TO HANDLE FUEL OUTDOORS, AWAY FROM SPARK OR FLAME.

## **LUBRICATION**

To lubricate your , apply bearing grease through the fitting on the hub housing. .You may use an air pressure or hand-held grease gun. To lubricate the wheels on your high quality grease may be packed inside the wheel hubs.

## **CUTTING HEIGHT ADJUSTMENT**

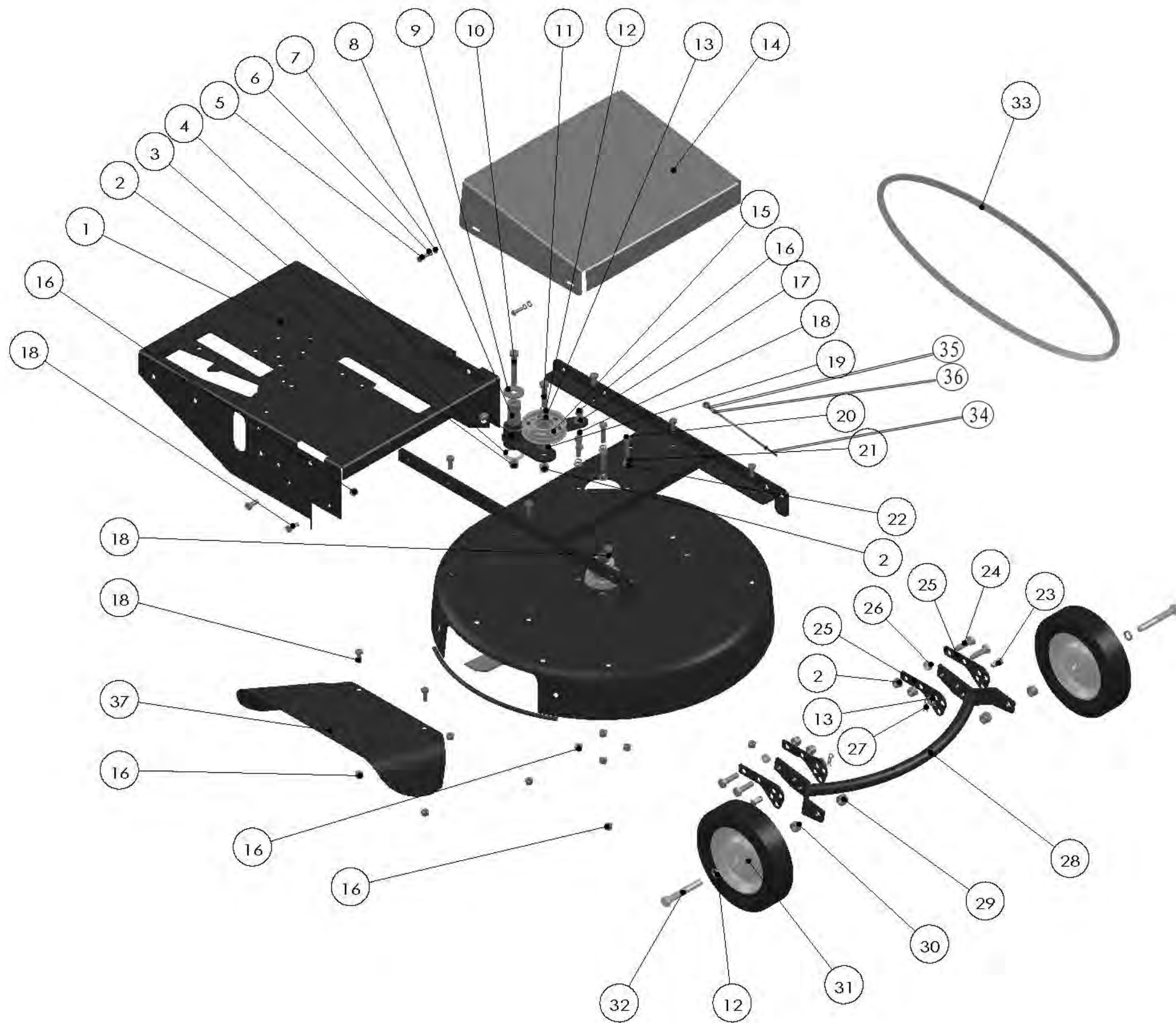
Your is adjustable to a accommodated your cutting height requirements by lower and raising the front and rear wheels.

## **BLADE SHARPENING-CAUTION**

**CAUTION:** WHEN ADJUSTING, REPLACING OR MOVING THE MOWER BLADE, THE SPARK PLUG WIRE MUST BE DISCONNECTED TO AVOID ACCIDENTAL STARTING.

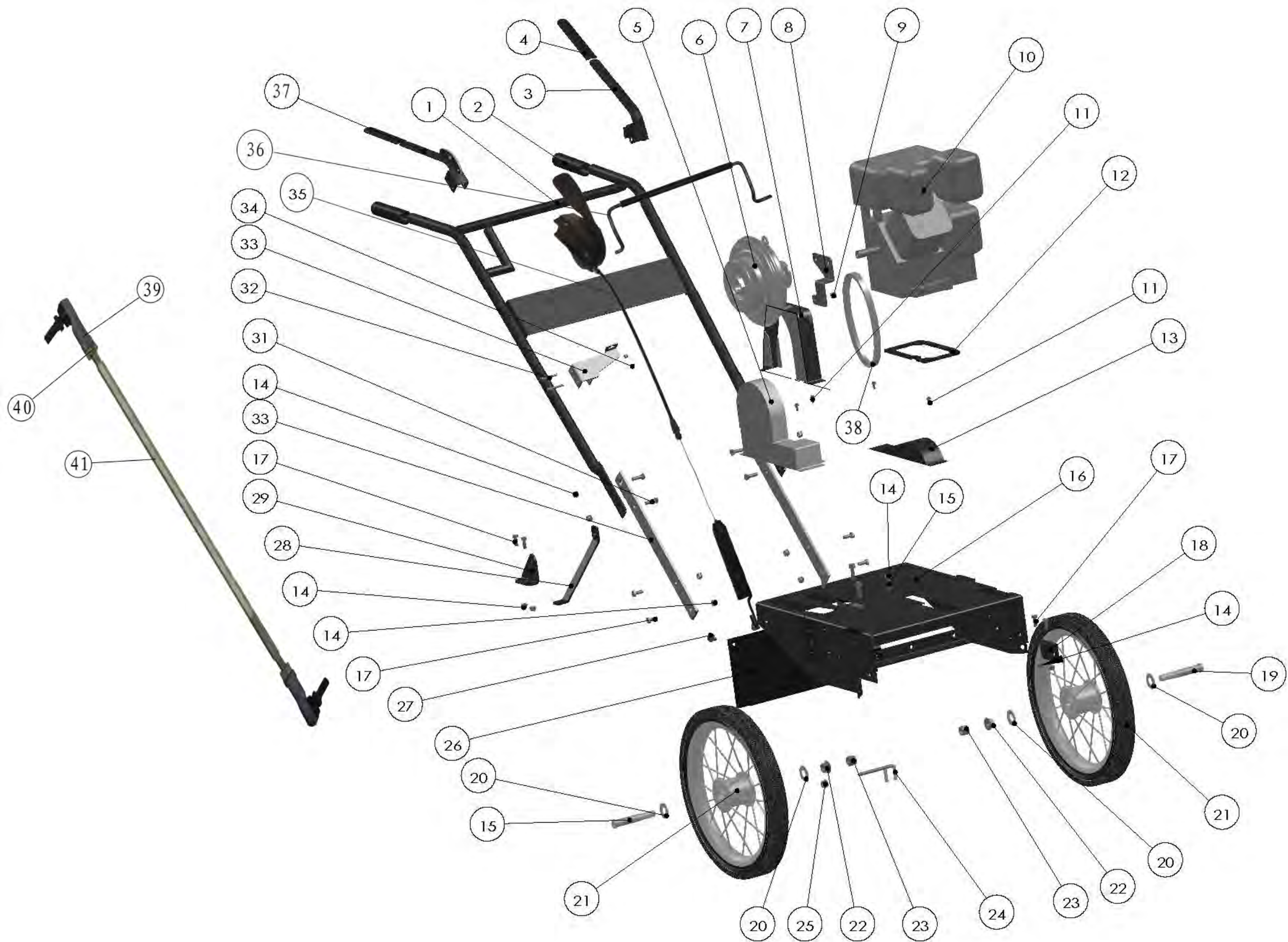
## **CLEANING YOUR MOWER**

Clean your mower after each use. Let the engine cool, and then wipe the grass and debris from mower and engine. Check mower pan for grass and dirt build-up. Disconnect the spark plug and tip mower on its side (muffler side up) to clean underneath deck. Check the blade and mounting hardware at frequent intervals for wear and tightness. Replace worn parts with original equipment parts for safety.



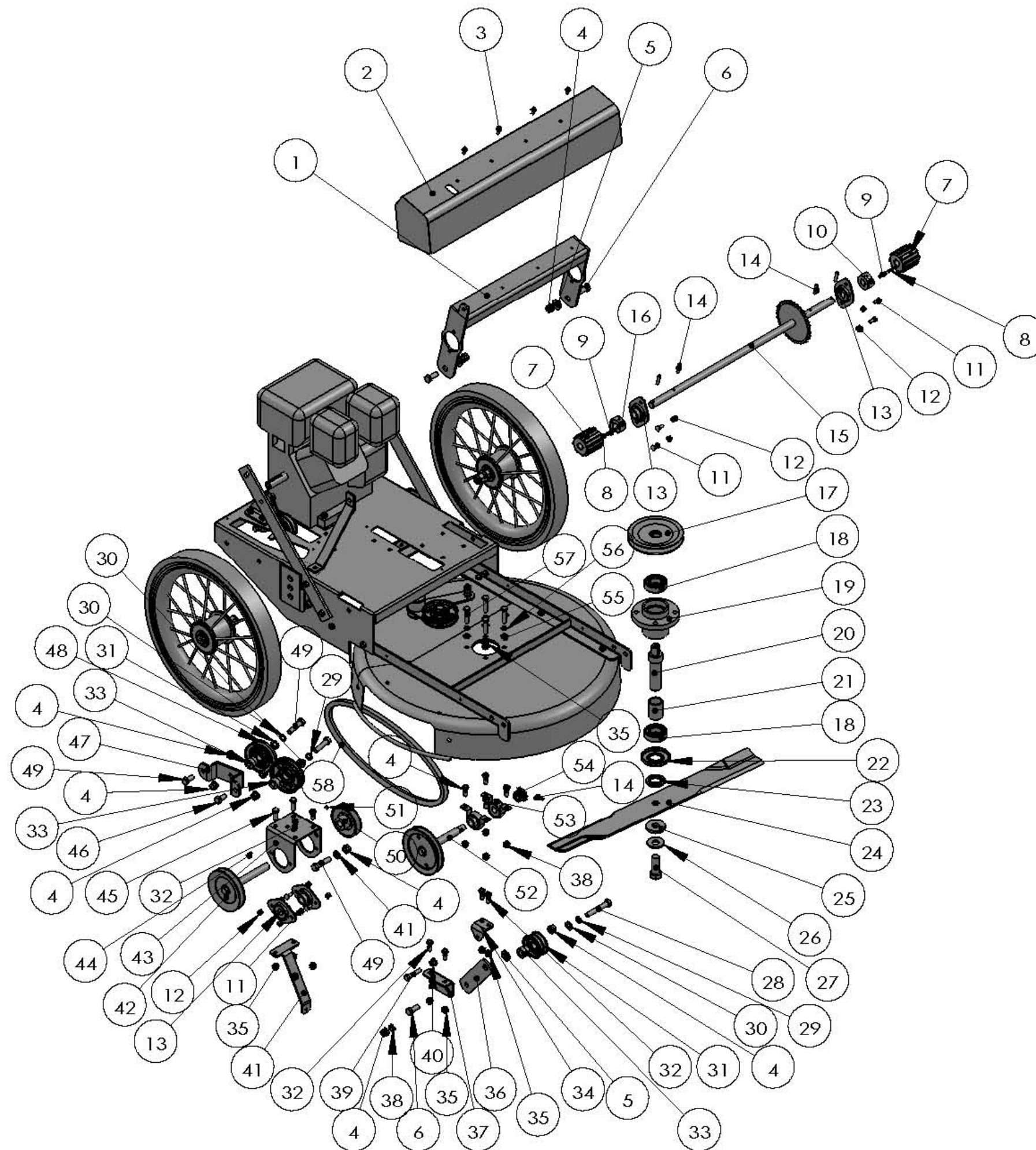
Item NO.	Part Number	Description	Qty
1	424B-045	<b>Rear Deck</b>	1
2	200-006	Nylon Nut M10 GB889-86	2
3	100-015	Space	1
4	424B-046	Tensioner arm	1
5	200-036	Hexagon Bolt M6X20 GB5783	4
6	200-053	Lock Washer 6 GB93	4
7	200-042	Plain Washer 6 GB95	4
8	100-024	Steering shaft bushing	1
9	100-019	Belt pressing wheel pad	1
10	200-022	Hexagon Bolt M10X65 GB5782	1
11	200-052	Hexagon Bolt M10X45 GB5782	1
12	200-031	Lock Washer 10 GB93	3
13	200-010	Plain Washer 10 GB95	3
14	424B-047	Belt wheel protective cover	1
15	424B-048	Transmission belt pressing wheel	1
16	200-030	Nylon Nut M8 GB889-86	13
17	200-029	Nut Flange M8 GB6187-86	1
18	200-178	Hexagon Bolt M8X16 GB5783	10
19	300-005	Belt pressing wheel shaft	1
20	200-104	Hexagon Bolt M8X35 GB5783	4
21	200-024	Lock Washer 8 GB93	4
22	200-021	Plain Washer 8 GB95	4
23	200-109	Clevis Pin 10*20 GB882-86	2
24	100-103	Hexagon Bolt M10X30 GB5783	4
25	400-016	Height adjustment	4
26	400-017	Space	2
27	200-069	Pin 2.5	2
28	424B-049	<b>The front mounting bracket</b>	1
29	200-007	Nylon Nut M12 GB889-86	2
30	200-107	Nut M12 GB6170	2
31	400-009	Front wheel	2
32	400-008	Front wheel axel	2
33	424B-050	<b>Cutter belt</b>	1
34	424B-051	<b>Tension rod</b>	1
35	300-015	Rod End	1
36	200-074	Hexagon Nut M8	1
37	400-010	Chute Ext	1







Item NO.	Part Number	Description	Qty
1	424B-025	Plow handle	1
2	400-034	Handle grip	2
3	400-028	Bail weldment	1
4	400-001	Grip	2
5	424B-026	Clutch guard II	1
6	424B-027	Clutch	1
7	424B-028	Clutch guard I	1
8	424B-029	connector panel	1
9	424B-030	Nylon Nut 5/16	1
10	424B-031	Engine	1
11	424B-032	Hexagon Bolt M6x12 GB5789	7
12	424B-033	Engine washer	1
13	424B-034	Belt Guard	1
14	200-030	Nylon Nut M8 GB889-86	16
15	200-085	Hexagon Bolt M8X40 GB5782	4
16	424B-035	Eng. mount	1
17	200-178	Hexagon Bolt M8X16 GB5783	8
18	424B-013	Crossarm II	1
19	400-025	Back wheel axel	2
20	400-020	Back wheel washer	4
21	400-026	Back wheel	2
22	200-097	Nut Flange M14 GB6187-86	2
23	200-172	Nylon Nut M14 GB889-86	2
24	424B-037	Belt Guard	1
25	200-006	Nylon Nut M10 GB889-86	1
26	422B-006	Rear deflector	1
27	200-095	Push rivet	4
28	424B-038	Engine Belaying Cleat	1
29	424B-039	Pull plate bracket	1
30	424B-040	Handrail connecting plate	2
31	200-119	Hexagon Bolt M8X25 GB5783	4
32	424B-041	Bolt M5x40 GB818-85	2
33	424B-042	Clutch controller support	1
34	200-013	Nylon Nut M5 GB889-86	2
35	424B-045	Clutch switch	1
36	424B-046	Clutch control handle	1
37	424B-043	Left Bail weldment	1
38	424B-044	Engine Belt	1
39	900-196	Rod End RH8	2
40	200-074	Hexagon Nut M8	2
41	424B-047	Travel control lever	1



Item NO.	Part Number	Description	Qty
1	424B-001	Walking support	1
2	424B-002	Sprocket cover	1
3	200-135	Hexagon Bolt M5x12 GB5789	4
4	200-006	Nylon Nut M10 GB889-86	8
5	424B-003	Washer	3
6	200-003	Hexagon BoltM10x25 GB5783	2
7	424A-005	Crawler	2
8	424A-006	Spring	2
9	424A-007	Drive pin	2
10	424A-008	RH Ratchet block	1
11	424B-004	Square Nect Bolt M6x20 GB12	8
12	200-009	Nylon Nut M6 GB889-86	8
13	424B-005	Spherical bearing UBPFL202-16	4
14	200-114	Roll pin 5*30 GB879	5
15	424B-006	Cross shaft sprocket	1
16	424A-011	LH Ratchet block	1
17	424B-007	Grooved pulley	1
18	200-167	Bearing 1641	2
19	700-007	Cutter House	1
20	424B-008	Cutter Pivot	1
21	700-008	Tube, Confine Bearing	1
22	700-010	Hood, Bearing	1
23	424B-009	Washer	1
24	424A-032	Blade 24"	1
25	700-029	Blade Washer	1
26	700-028	Saucer Washer	1
27	700-021	Bolt M16x1.5x45	1
28	200-022	Hexagon BoltM10x65 GB5782	1
29	200-031	Lock Washer 10 GB93	3
30	200-010	Plain Washer 10 GB95	3
31	424B-010	Belt pressing wheel	1
32	200-178	Hexagon BoltM8x16 GB5783	10
33	300-005	<b>Belt pressing wheel shaft</b>	3
34	424B-011	Spring bracket I	1
35	200-030	Nylon Nut M8 GB889-86	15
36	424B-012	<b>Belt pressing wheel plate</b>	1
37	424B-013	Crossarm II	1
38	200-027	Nut Thin M10 GB6172	2
39	200-085	Hexagon BoltM8x40 GB5782	1
40	200-029	Nut Flange M8 GB6187-86	1
41	424B-014	<b>Engine chassis supporting Pulley</b>	1
42	424B-015		1
43	424B-016	Walking the input shaft support	1
44	200-125	<b>Key 5x6.5x16</b>	1
45	200-119	Hexagon BoltM8x25 GB5783	2
46	424B-017	Hexagon BoltM10x20 GB5783	2
47	424B-018	Guide wheel support	1
48	424B-019	Guide wheel	1
49	200-052	Hexagon BoltM10x45 GB5782	3
50	424B-020	<b>Pulley</b>	1
51	424B-021	Screw GB73 M6*6	1
52	424B-022	<b>Pulley</b>	1
53	424B-023	Spherical bearing UEPP202-16	2
54	424A-014	Sprocket	1
55	200-021	Plain Washer 8 GB95	4
56	200-024	Lock Washer 8 GB93	4
57	200-085	Hexagon BoltM8x35 GB5783	4
58	424B-024	<b>Transmission belt</b>	1