



High Wheel Commercial Mower
22DP • 22BP • 24SP



OWNER'S MANUAL & PARTS LIST

www.BradleyMowers.com



Sep. 10th 2023



Commercial Mower Operators Manual & Parts List

Special Training is required to operate this mower safely

MOWER MODEL:

SERIAL:

ENGINE MODEL & HP:

DATE PURCHASED:

PURCHASED FROM:

IMPORTANT MESSAGE

This machine comes with an Owner's Manual and List. The useful life and good service you receive from this machine depends to a large extent on how well you read and understand this manual. Treat your machine properly, lubricate and adjust it as instructed, and it will give you many years of reliable service.

Your safe use of this product is one of our prime objectives. Many safety features are built in, but we also rely on your good sense and care to achieve accident-free operation. For best protection, study the manual thoroughly. Learn the proper operation of all controls. Observe all safety precautions. Follow all instructions and warnings completely. Do not remove or defeat any safety features.

See a Havener Enterprises, Inc. dealer for any service or parts needed. Havener Enterprises, Inc. service ensures that you continue to receive the best results possible from Havener Enterprises, Inc. products. You can trust Havener Enterprises, Inc. replacement parts because they are manufactured with the same high precision and quality as the original parts.

Havener Enterprises, Inc. designs and builds its equipment to serve many years in a safe and productive manner. For longest life, use this machine only as directed in the manual, keep it in good repair and follow safety warnings and instructions.

IMPORTANT INSTRUCTIONS:

Read the owner's manual and make it readily available for future reference.

Be familiar with the operation of the mower. Extreme emphasis should be placed on operator safety and the mower's safety features.

Know the correct mower and engine service and maintenance requirements, and be able to perform or have performed the service and recommended lubrication as required.

GENERAL

Before servicing, check the mower for such items as belt tension and cutting height adjustment, to be sure mower functions properly. Check attachment of the rear guard and inspect to make sure the chute guard is secure.

HANDLEBARS

This mower is shipped with the handlebars detached. Handlebars must be bolted into position before use. All controls must be properly mounted to the handlebars before starting.

REPAIRS OR SERVICE

IMPORTANT: If service or parts are required, be prepared to supply the service person with the model and serial number of the mower and engine. Include a complete description of the problem encountered.

TRAINING

Read the operating and service instruction manual carefully and completely. Be familiar with all safety controls and the proper use of the equipment.

NEVER

let a child operate a power mower.

Keep the area of operation clear of all persons, especially small children and pets.

PREPARATION

1. Never operate your power mower unless ALL GUARDS are securely attached Do not remove rear guard!
2. Thoroughly inspect area where the mower will be used. Remove all stones, sticks, bones and other foreign objects.
3. Wear long pants and substantial shoes when operating the mower. Do not operate mower-wearing sandals, tennis shoes, sneakers, shorts or loose-fitting clothing that could be caught in moving parts.

4. Check gas level before starting engine. Do not fill gas tank indoors, when the engine is running, or while the engine is still hot, Wipe off any spilled gasoline before starting engine.
5. Mow only in daylight.
6. Never operate a mower in wet grass. Always be sure of your footing, keep a firm hold on the handle, and walk. NEVER RUN!
7. NEVER operate a mower without proper eye and hearing protection, i.e.: safety glasses face shield or goggles.

STARTING & STOPPING

1. Fill the engine crankcase with oil. Refer to the engine instruction manual supplied with this mower.
2. Fill the gas tank. Refer to engine manual.
3. Set throttle control to proper position to START
4. Hold lever against the handlebar and pull recoil starter cord See figure 3

NOTE: Return cord slowly-DO NOT LET HANDLE SNAP!



REMEMBER:

The lever control must be held against handlebar to operate the mower. See Figure 1
When the lever is release, the engine and blade will stop.

GOING FORWARD:

Slowly press the control lever down and the mower will start to move forward (Note: Only the 24B6.75SP can do this).

TO STOP

1. Release all lever controls, engine, and blade will stop. See Figure 2
2. IMPORTANT: Release the lever control this will STOP the blade and engine. If this feature fails to function, DO NOT OPERATE MOWER. Disconnect the spark plug wire and see your Even Cut dealer.

REMEMBER: The safety features on this mower are for your protection. Do not tamper with or remove these components.

OPERATION

1. Do not change the engine governor setting or over speed the engine.
2. Do not put hands or feet near or under rotating parts. Stay clear of discharge area while the engine is running (Figure.5).
3. Stop the mower when crossing gravel drives, walks, roads, or any other area where thrown objects may be a hazard.
4. After striking a foreign object, or if the mower vibrates abnormally, stop the engine, disconnect, and secure the spark plug wire, Inspect the mower for any damage before restarting.
5. Before cleaning, repairing, or inspecting, make certain the blade and all other moving parts have come to a complete stop. Disconnect the spark plug and secure the wire away plug to prevent accidental starting.
6. Do not run the engine indoors.
7. Mow across the face of slope, never up and down. Exercise extreme caution when changing directions on slopes. Do not mow excessively steep slopes.



Figure 5

MAINTENANCE & STORAGE

1. In order for your safety controls to function at the peak of efficiency, they must be inspected and adjusted regularly. Initial inspection shall take place after the first two (2) hours. Belt tension is a very critical part of your safety inspection, and should be checked frequently.
2. Keep all nuts, bolts and screws tight to assure safe mower operation.
3. Never store equipment with gas in the tank or in a building near a spark or flame. Allow the engine to cool before storing in any enclosure.
4. To reduce fire hazard, keep mower free of grass, leaves or excessive grease.
5. Have your mower service and inspected every year by your authorized Even Cut dealer, and if you perform repairs yourself, use only Even Cut replacement parts.

IMPORTANT:

If service or parts are required, be prepared to supply the service person with the model and serial number of the mower and engine Include a complete description of the problem encountered.

ENGINE GENERAL

Follow the engine manual supplied with this mower for proper engine maintenance and service. The engine on your Even Cut mower is an item for which the manufacturer maintains a national service organization. FOR ENGINE PARTS AND REPAIR INSTRUCTIONS, CONTACT THE ENGINE MANUFACTURER'S DEALER. Your engine is

designed for long lasting service when given proper care. For the proper care instructions, READ YOUR ENGINE MANUAL!

SPECIAL SERVICE INSTRUCTIONS

Check oil level before every mowing.

Change Oil every eight to ten hours of operation. Use high quality SAE 30 oil.

Use unleaded gasoline.

Keep your engine clean. Dirt and grass accumulation can result in serious damage to the precision parts of your engine.

ENGINE SERVICE

Refer to engine owner's manual.

CAUTION: BE SURE TO HANDLE FUEL OUTDOORS, AWAY FROM SPARK OR FLAME.

LUBRICATION

To lubricate your Even Cut Mower, apply bearing grease through the fitting on the hub housing. You may use an air pressure or hand-held grease gun. To lubricate the wheels on your Even Cut Mower high quality grease may be packed inside the wheel hubs.

CUTTING HEIGHT ADJUSTMENT

Your Even Cut is adjustable to accommodate your cutting height requirements by lowering and raising the front and rear wheels.

BLADE SHARPENING-CAUTION

CAUTION: WHEN ADJUSTING, REPLACING OR MOVING THE MOWER BLADE, THE SPARK PLUG WIRE MUST BE DISCONNECTED TO AVOID ACCIDENTAL STARTING.

CLEANING YOUR EVEN CUT MOWER

Clean your Even Cut after each use. Let the engine cool, and then wipe the grass and debris from mower and engine. Check mower pan for grass and dirt build-up. Disconnect the spark plug and tip mower on its side (muffler side up) to clean underneath deck.

Check the blade and mounting hardware at frequent intervals for wear and tightness.

Replace worn parts with Even Cut original equipment parts for safety.

Unpacking Instructions

1. Take out the mower from the carton.



2. Take off the handle bar by using two 13mm wrenches.



3. Assemble the handle bar and tighten the four bolts as shown below:

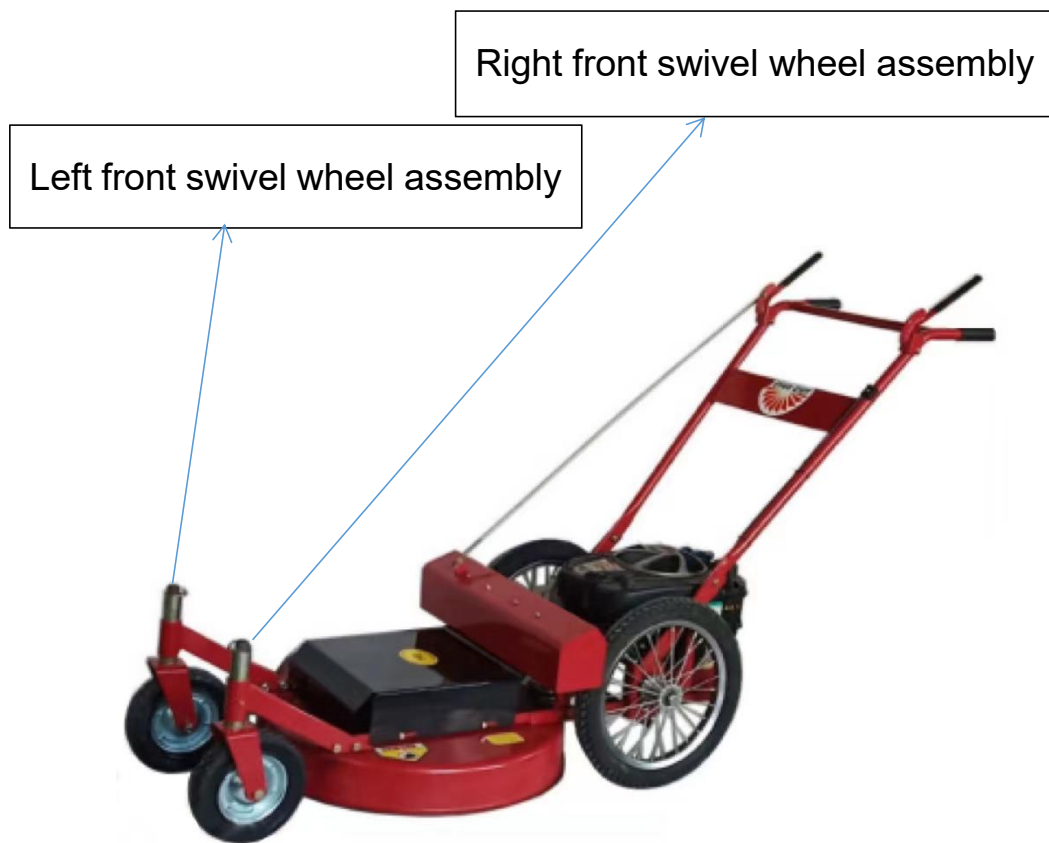


4. Hook up the throttle cable as shown below:



5. Install the swivel front wheel for BP, SP only

Install the front wheel assembly: Take off the nut from the swivel wheel and then install the front wheel assembly on the deck frame, tighten it with the wrench.



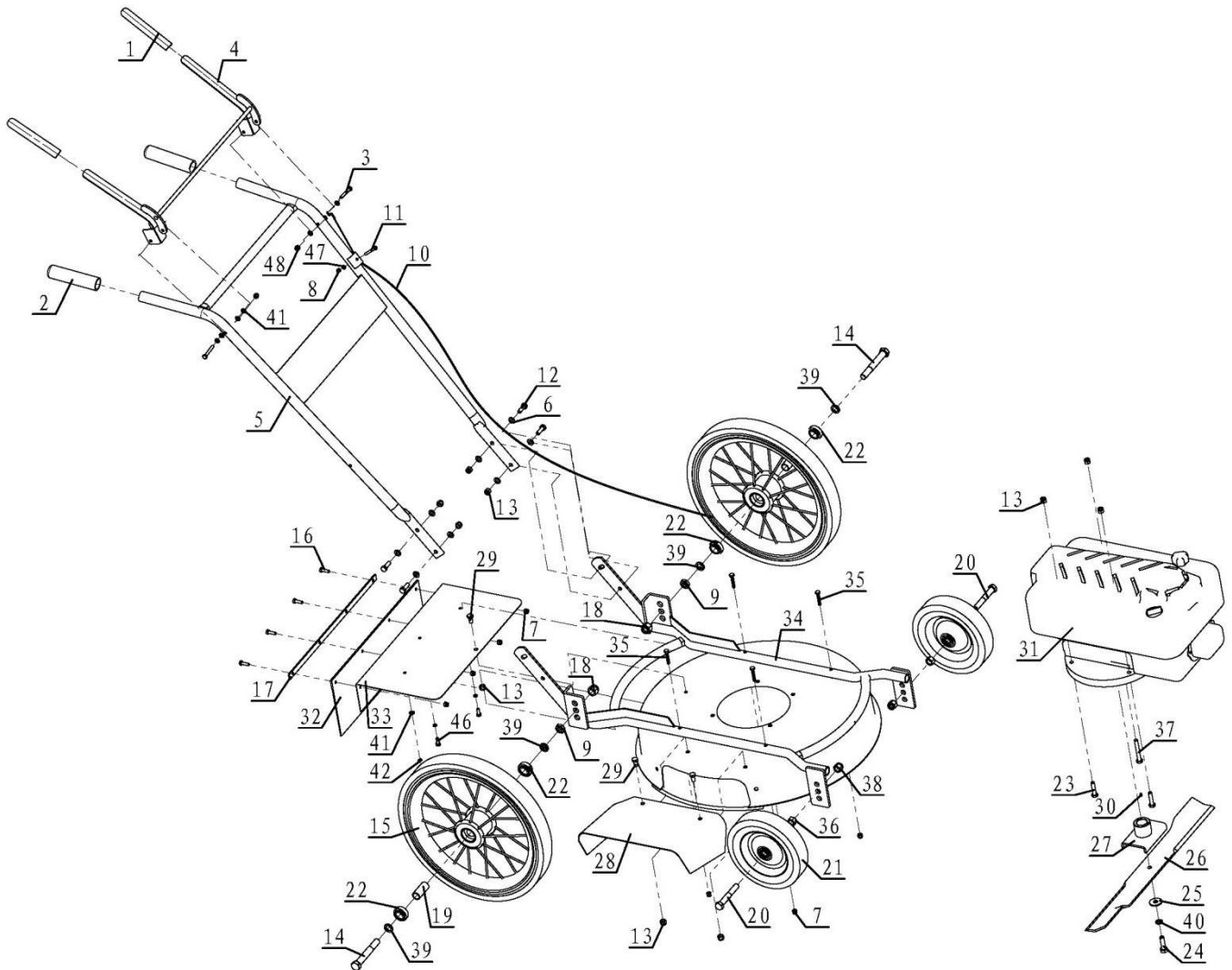
6. Install the grass chute and tighten the two bolts as shown below marked in yellow.



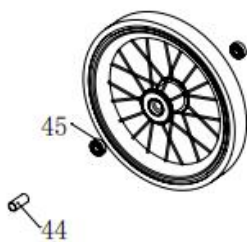
7. Install the walking rod as shown below.
Please note only the 24SP mower has this part.



22DP Assembly



43

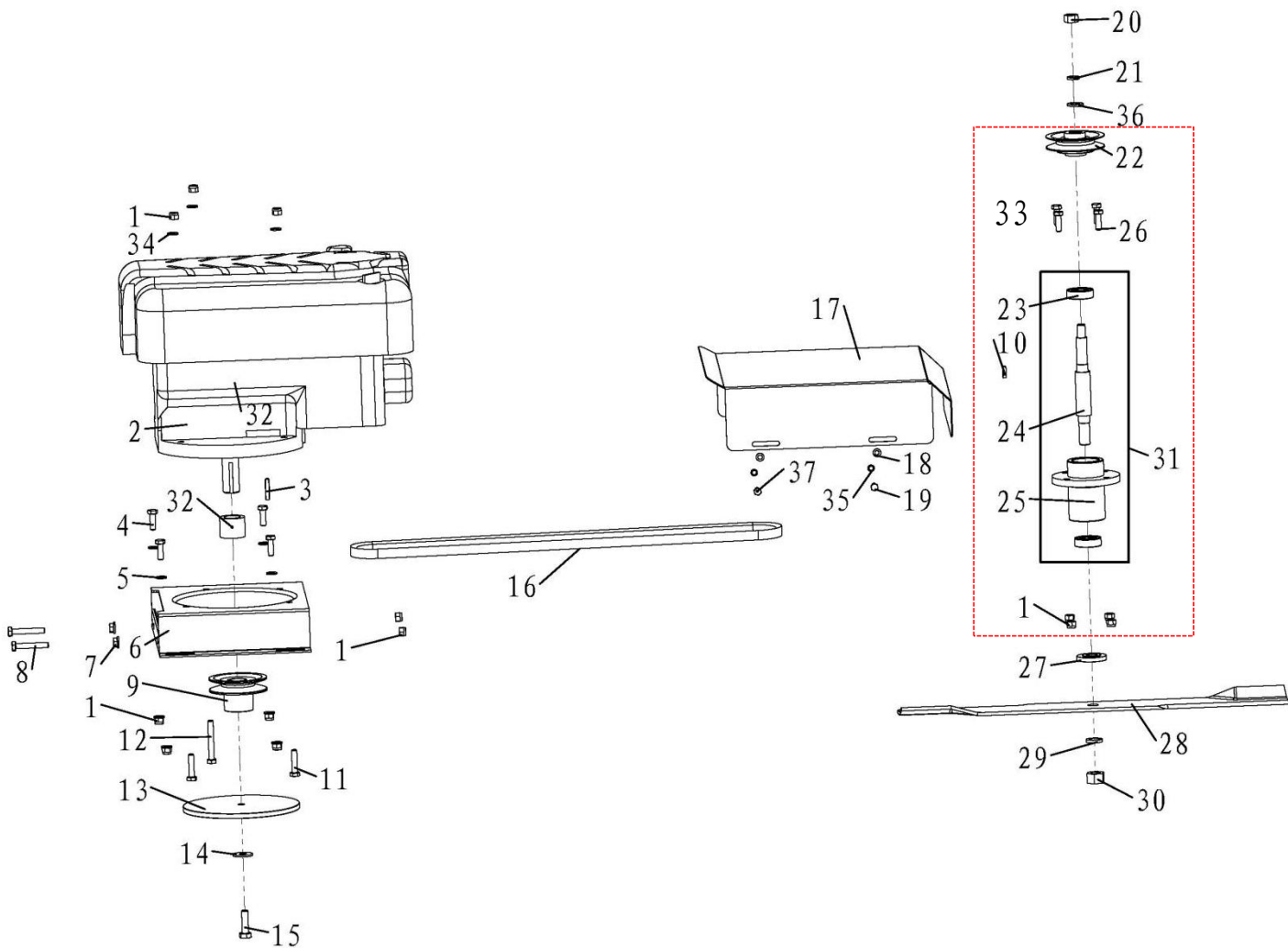


22DP Assembly

Item No.	Part Number	Description	Qty
1	400-001	Grip	2
2	400-034	Handle Grip	2
3	200-327	Hexagon Bolt M6-1x45 GB5782	2
4	400-003	Bail	1
5	400-035	Plow Handle	1
6	200-021	Plain Washer 8 GB95	8
7	200-009	Nylon Nut M6 GB889	8
8	200-013	Nylon Nut M5 GB889	1
9	200-174	Nut Thin M14 GB6172.1	2
10	400-029	Safety Cable	1
11	200-173	Bolt M5-0.8x40 GB818	1
12	200-119	Hexagon Bolt M8-1.25x25 GB5783	4
13	200-030	Nylon Nut M8 GB889	10
14	400-025A	Back Wheel Axle-Hex Head	2
15	400-026P	Back Wheel-Pneumatic 16x2.125	2
16	200-036	Hexagon Bolt M6-1x20 GB5783	4
17	422A-001	Bracket	1
18	600-205-0014	Nylon Nut M14 DIN985	2
19	424A-039	Spacer for Wheel	2
20	400-008	Front Wheel Axle	2
21	400-009	Front Wheel	2
22	200-318	Bearing 6202-2RS	4
23	600-002-0840	Hexagon Bolt M8-1.25x40 GB5783	2
24	400-014	Engine Bolt	1
25	400-044	Washer	1
26	422A-002	Straight Blade 22"	1
27	422A-003	Blade Saddle 22.2mm	1
	422A-003A	Blade Saddle 25mm	1
28	422A-006	Chute	1
29	200-178	Hexagon Bolt M8-1.25x16 GB5783	3
30	200-106	Woodruff key 4x6.5x16 GB1099	1
	200-350	Flat key 6.35x6x30 GB1096	1
31	424A-073	Engine Assembly	1
32	400-011	Rear Deflector	1
33	422A-004	Flange Deck	1
34	422A-005	Mover Frame For 22"(A)	1
35	200-177	Hexagon Bolt M6-1x35 GB5783	4
36	200-107	Hexagon Nut M12 GB6170	2
37	200-220	Hexagon Bolt M8-1.25x70 GB5782	1
38	200-007	Nylon Nut M12 GB889	2

39	400-020a	Spacer, Bearing	4
40	600-604-0010	Lock Washer 3/8	1
41	200-301	Plain Washer 6 GB95	11
42	200-053	Lock washer 6 GB93	3
46	200-120	Hexagon Bolt M6-1x16 GB5783	3
47	200-138	Plain washer 5 GB95	1
48	600-205-0006	Nut M6 DIN985	2
optional			
43	400-026	Solid tire assembly	2
44	424A-039A	Spacer for Wheel	2
45	424A-068	Standard 3/4"ball bearing	4

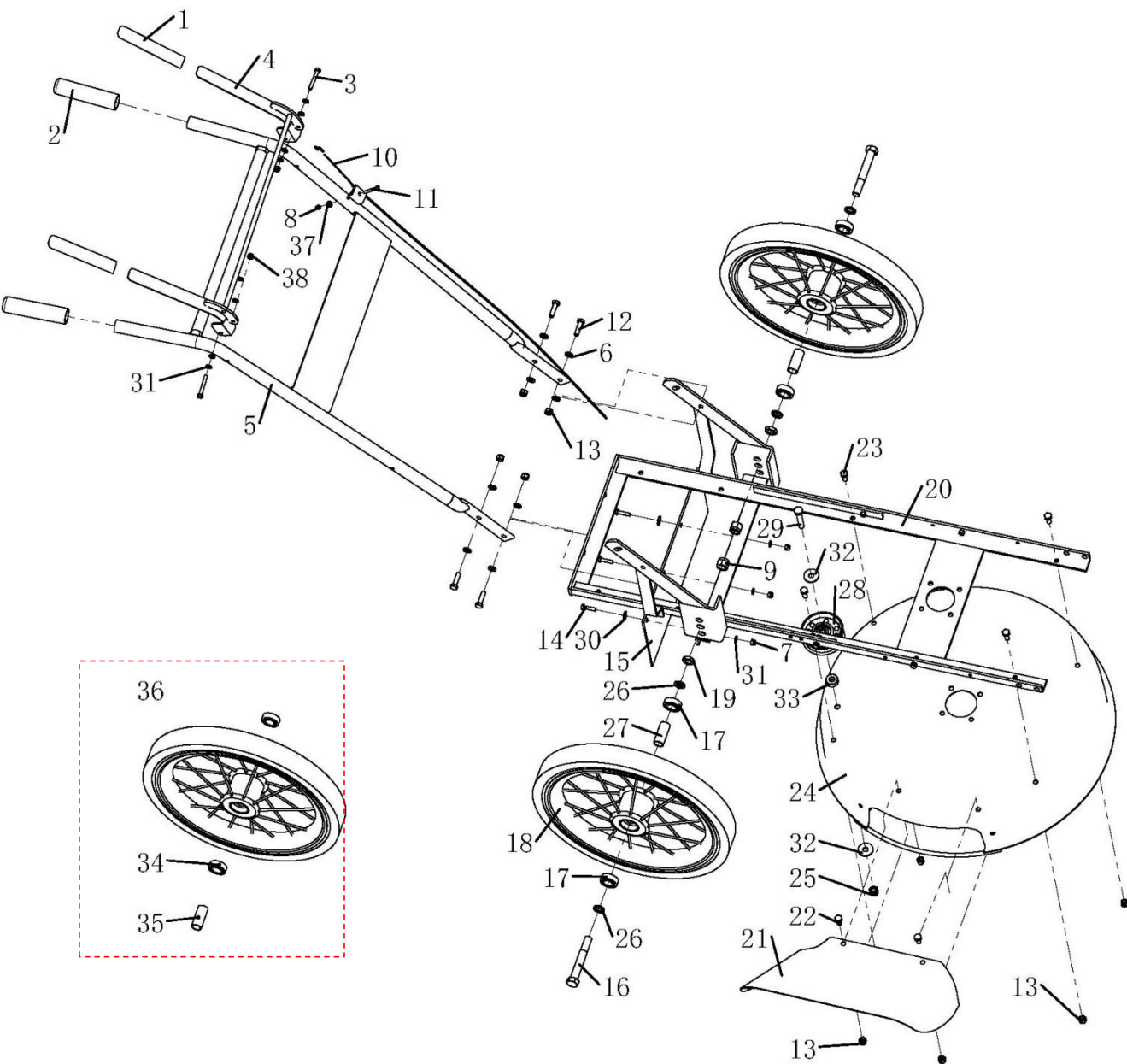
22BP Gearing Assembly



22BP Gearing Assembly

Item No.	Part Number	Description	Qty
1	200-030	Nylon Nut M8 GB889	13
2	424A-073	Engine Assembly	1
3	100-139	Flat key6.35x6x38	1
4	200-119	Hexagon Bolt M8-1.25x25 GB5783	4
5	336-239	Plain Washer 3*8.5 id *20 od	4
6	400-030	Engine Mount (For 2018 or earlier)	1
	400-030A	Engine Mount((For 2021upgrade design)	1
7	600-202-0008	Nut Flange M8 QC864	2
8	200-179	Hexagon Bolt M8-1.25x50 GB5783	2
9	400-060	Engine Pulley 25mm	1
10	200-125	Key 5x6.5x16 GB1099-97	1
11	200-049	Hexagon Bolt M8-1.25x35 GB5783	2
12	200-220	Hexagon Bolt M8-1.25x70 GB5782	1
13	400-021	Fly Wheel	1
14	600-902-0010	Butterfly Washer 10 DIN6796	1
15	400-014	Engine Bolt	1
16	400-033	High wheel deck Belt LA55-AGX	1
17	422B-005	Master Link For 22"(B)	1
18	200-042	Plain Washer 6 GB95	4
19	200-036	Hexagon Bolt M6-1x20 GB5783	2
20	200-124	Hexagon Nut M12x1.5 GB6171	1
21	200-078	Lock Washer 12 GB93	1
22	400-032A	Pulley	1
23	200-110	Bearing 6203-2RS	2
24	422B-002A	Hub Shaft	1
25	400-015a	Bearing Housing	1
26	200-025	Hexagon Bolt M8-1.25x30 GB5783	4
27	400-019	Blade Spacer	1
28	422B-001	Blade 22"	1
29	200-096	Lock Washer 16 GB93	1
30	200-017	Hexagon Nut M16x1.5 GB6171	1
31	422B-007A	Cutter Housing Assembly	1
32	424A-071	Straight Pivot	1
33	400-045	Spindle assembly	1
34	600-301-0008	Plain Washer 8 GB95	3
35	600-305-0006	Lock Washer 6 GB93	4
36	600-301-0012	Plain Washer 12 GB95	1
37	200-313	Hexagon Bolt M6-1x25 GB5783	2

22BP Frame Assembly

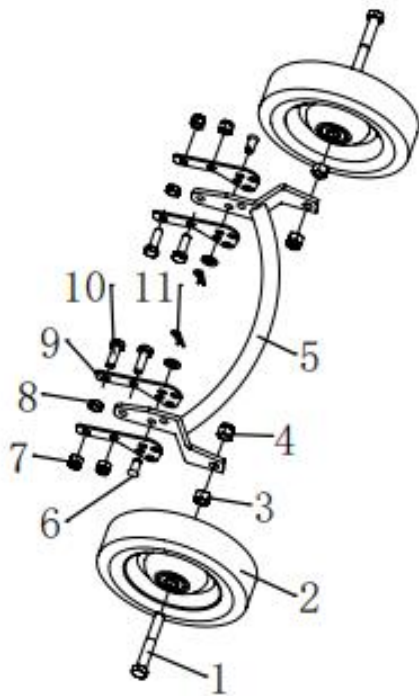


22BP Frame Assembly

Item No.	Part Number	Description	Qty
1	400-001	Grip	2
2	400-034	Handle Grip	2
3	200-327	Hexagon Bolt M6-1x45 GB5782	2
4	400-003	Bail	1
5	400-035	Plow Handle	1
6	200-021	Plain Washer 8 GB95	8
7	200-009	Nylon Nut M6 GB889	4
8	200-013	Nylon Nut M5 GB889	1
9	600-205-0014	Nylon Nut M14 DIN985	2
10	400-005	Safety Cable	1
11	200-173	Bolt M5-0.8x40 GB818	1
12	200-119	Hexagon Bolt M8-1.25x25 GB5783	8
13	200-030	Nylon Nut M8 GB889	10
14	200-036	Hexagon bolt M6-1x20 GB5783	4
15	422B-006	Rear Deflector	1
16	400-025A	Back Wheel Axle-Hex Head	2
17	200-318	Bearing 6202-2RS	4
18	400-026P	Back Wheel-Pneumatic 16x2.125	2
19	200-174	Nut thin M14 GB6172.1	2
20	422B-003	Mover Frame For 22"(B)	1
21	400-010	Chute Ext	1
22	200-178	Hexagon Bolt M8-1.25x16 GB5783	2
23	200-091	Hexagon Bolt M8-1.25x20 GB5783	4
24	422B-004	Deck Weldment	1
25	200-006	Nylon Nut M10 GB889	1
26	400-020a	Back wheel washer	4
27	424A-039	Spacer for Wheel	2
28	WM2836-052	Idle Pulley	1
29	200-068	Hexagon Bolt M10-1.5x55 GB5782	1
30	200-331	Plain washer 6 GB96	4
31	200-042	Plain Washer 6 GB95	12
32	200-147	Plain Washer 10 GB96	2
33	400-042	Spacer	1
37	200-138	Plain washer 5GB95	1
38	600-205-0006	Nut M6 DIN985	2
optional			
34	424A-068	Standard 3/4"ball bearing	4
35	424A-039A	Spacer for Wheel-Pneumatic	2
36	400-026	Solid tire assembly	2

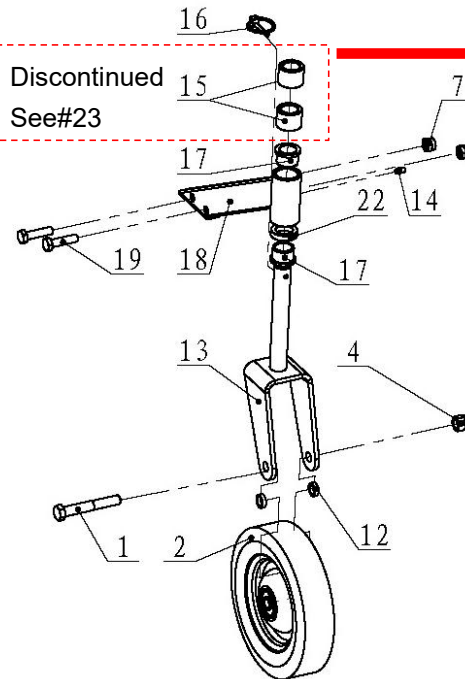
22BP, 24SP Front Wheel Assembly

20

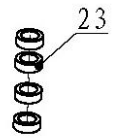


Front wheel assembly
for 2020 or earlier
discontinued

21



Front wheel assembly
for 2021 upgrade
design

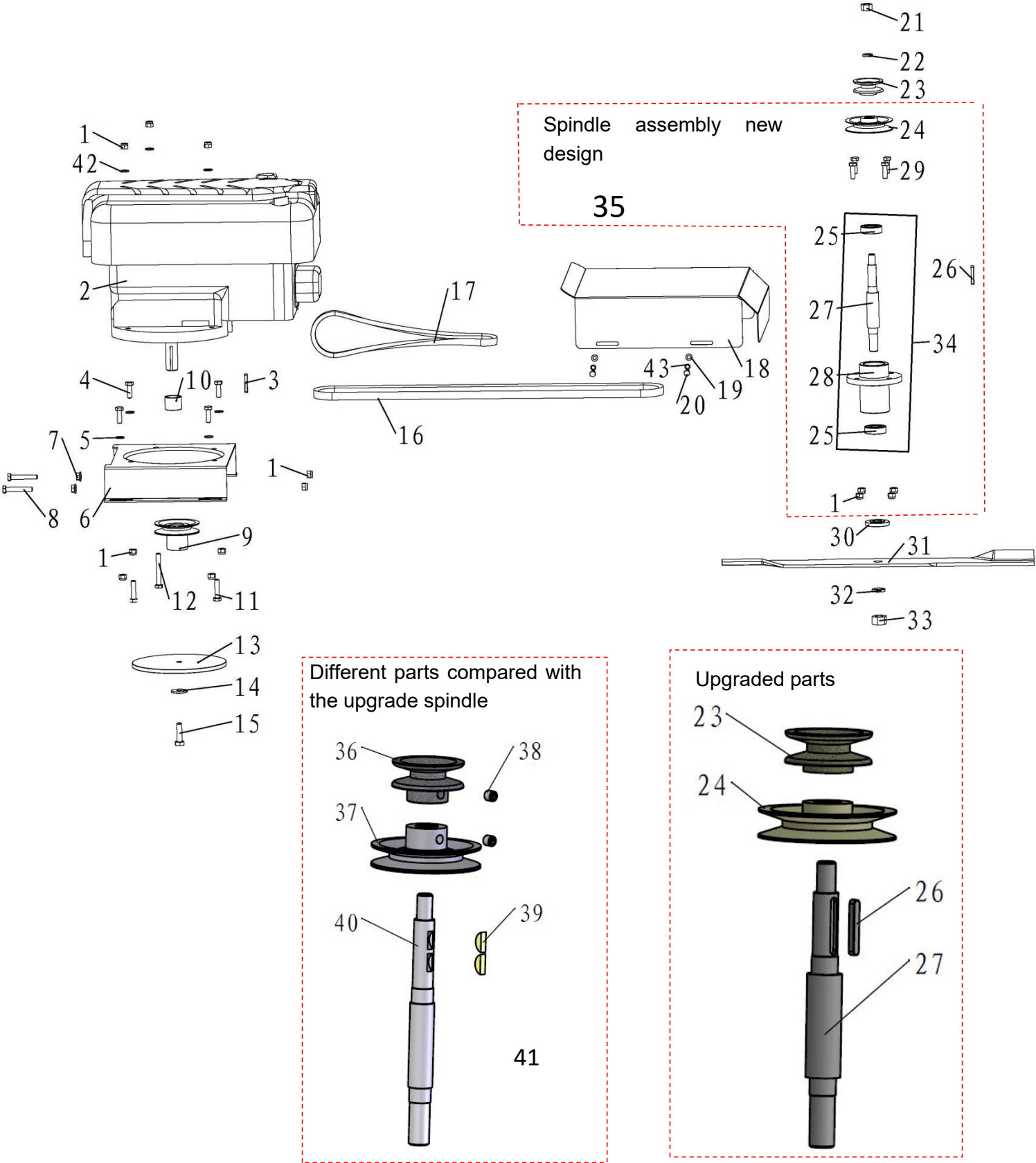


2024
upgrade
design

22BP, 24SP Front Wheel Assembly

Item No.	Part Number	Description	Qty
1	400-008	Front wheel axle	2
2	400-009	Front wheel	2
3	200-107	Hexagon Nut M12 GB6170	2
4	600-205-0012	Nylon nut M12 DIN985	2
5	400-018	Front end	1
6	200-109	Pin 10x20 GB882	4
7	200-006	Nylon Nut M10GB889	4
8	400-017	Space	2
9	400-016	Height adjustment	4
10	200-103	Hexagon Bolt M10-1.5x30 GB5783	4
11	200-069	Hair Pin Cotter	2
12	200-071	Plain Washer 12 GB95	4
	410-005	Front wheel spacer(for 2022 upgrade design)	4
13	410-003	Castor Yoke	2
14	200-026	Grease Fitting M6 GB1152	2
15	410-001	Spacer Sleeve	2
16	15023	Lynch Pin Tire	2
17	15005	Bronze Pivot Bushing	4
18	410-002-R	Right front yoke weldment	1
	410-002-L	Left front yoke weldment	1
19	200-019	Hexagon Bolt M10-1.5x40 GB5782	4
20	410-004	Front Wheel Assembly	1
21	410-000	Swivel Wheel Assembly	2
22	410-006	Adjustable washer	2
23	410-007	Spacer Sleeve I	8

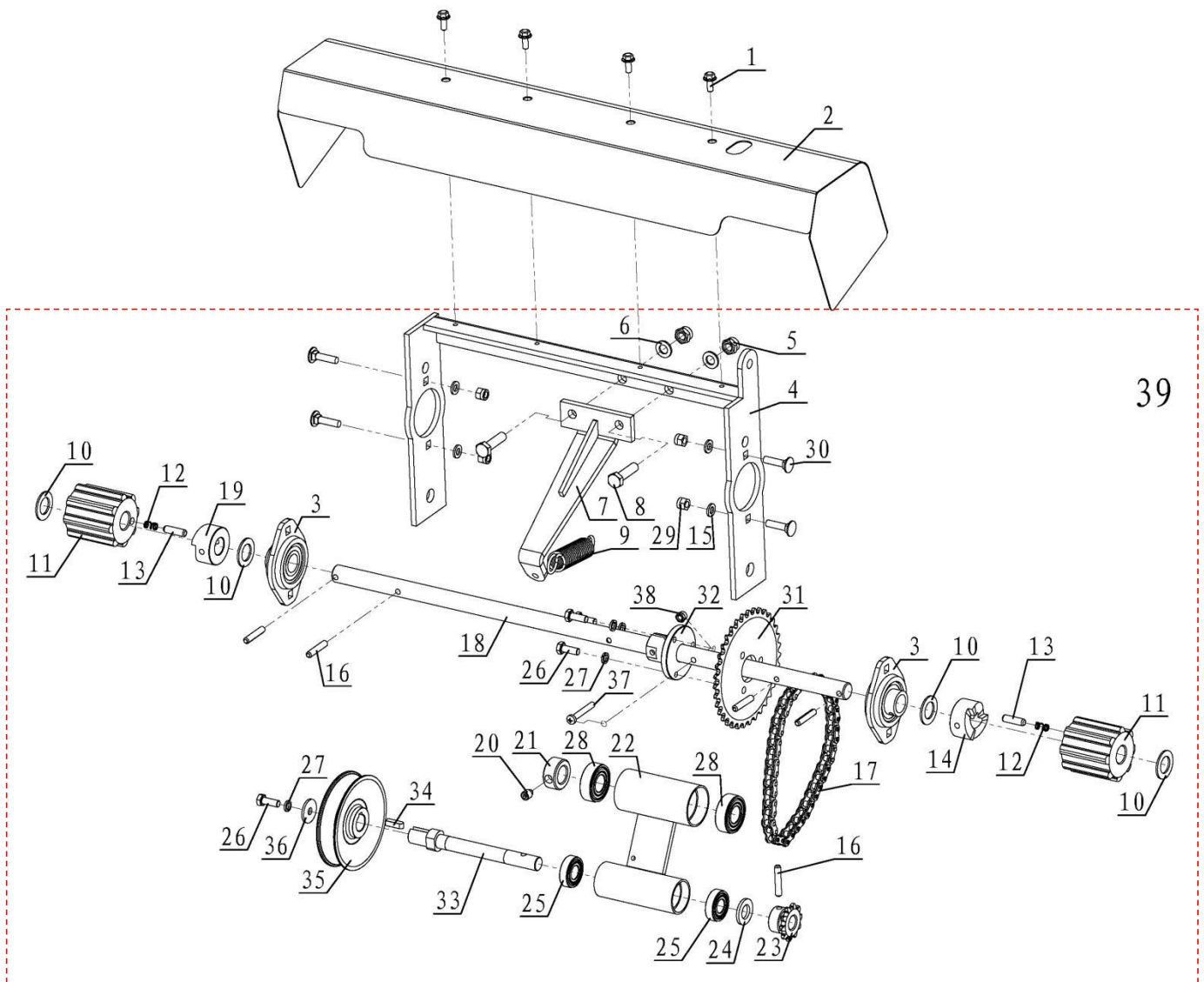
24SP Gearing Assembly



24SP Gearing Assembly

Item No.	Part Number	Description	Qty
1	200-030	Nylon nut M8 GB889	13
2	424A-073	Engine assembly	1
3	100-139	Flat key6.35x6x38	1
4	200-119	Hexagon Bolt M8-1.25x25 GB5783	4
5	336-239	Plain washer 3*8.5 id *20 od	4
6	400-030	Engine mount	1
	400-030A	Engine mount	1
7	600-202-0008	Nut flange M8 QC864	2
8	200-179	Hexagon bolt M8-1.25x50 GB5783	2
9	400-060	Engine pulley 25mm	1
10	424A-071	Straight pivot	1
11	200-049	Hexagon bolt M8-1.25x35 GB5783	2
12	200-220	Hexagon bolt M8-1.25x70 GB5782	1
13	400-021	Fly wheel	1
14	600-902-0010	Butterfly washer 10 DIN6796	1
15	400-014	Engine bolt	1
16	400-033	High wheel deck Belt LA55-AGX	1
17	424A-023	Belt LA26-AGX	1
18	424A-042	Deck shield	1
19	200-042	Plain washer 6 GB95	4
20	200-036	Hexagon bolt M6-1x20 GB5783	4
21	200-124	Hexagon nut M12x1.5 GB6171	1
22	200-078	Lock washer 12 GB93	1
23	424A-030A	Pulley	1
24	400-032A	Pulley	1
25	200-110	Bearing 6203-2RS	2
26	424A-067	Key 5x5x36 GB1096	1
27	424A-031A	Hub shaft	1
28	400-015a	Bearing housing	1
29	200-025	Hexagon Bolt M8-1.25x30 GB5783	4
30	400-019	Blade spacer	1
31	424A-032	Blade 24"	1
32	200-096	Lock washer 16 GB93	1
33	200-017	Hexagon nut M16x1.5 GB6171	1
34	424A-037A	Spindle assembly	1
35	424A-069	Spindle assembly new design	1
36	424A-030	Pulley	1
37	400-032	Pulley	1
38	200-083	Bolt screws M8x8 GB79-85	2
39	200-125	Key 5x6.5x16	2
40	424A-031	Hub shaft	1
41	424A-074	Different parts compared with the upgrade spindle	1
42	600-301-0008	Plain Washer 8 GB95	3
43	600-305-0006	Lock washer 16 GB93	4

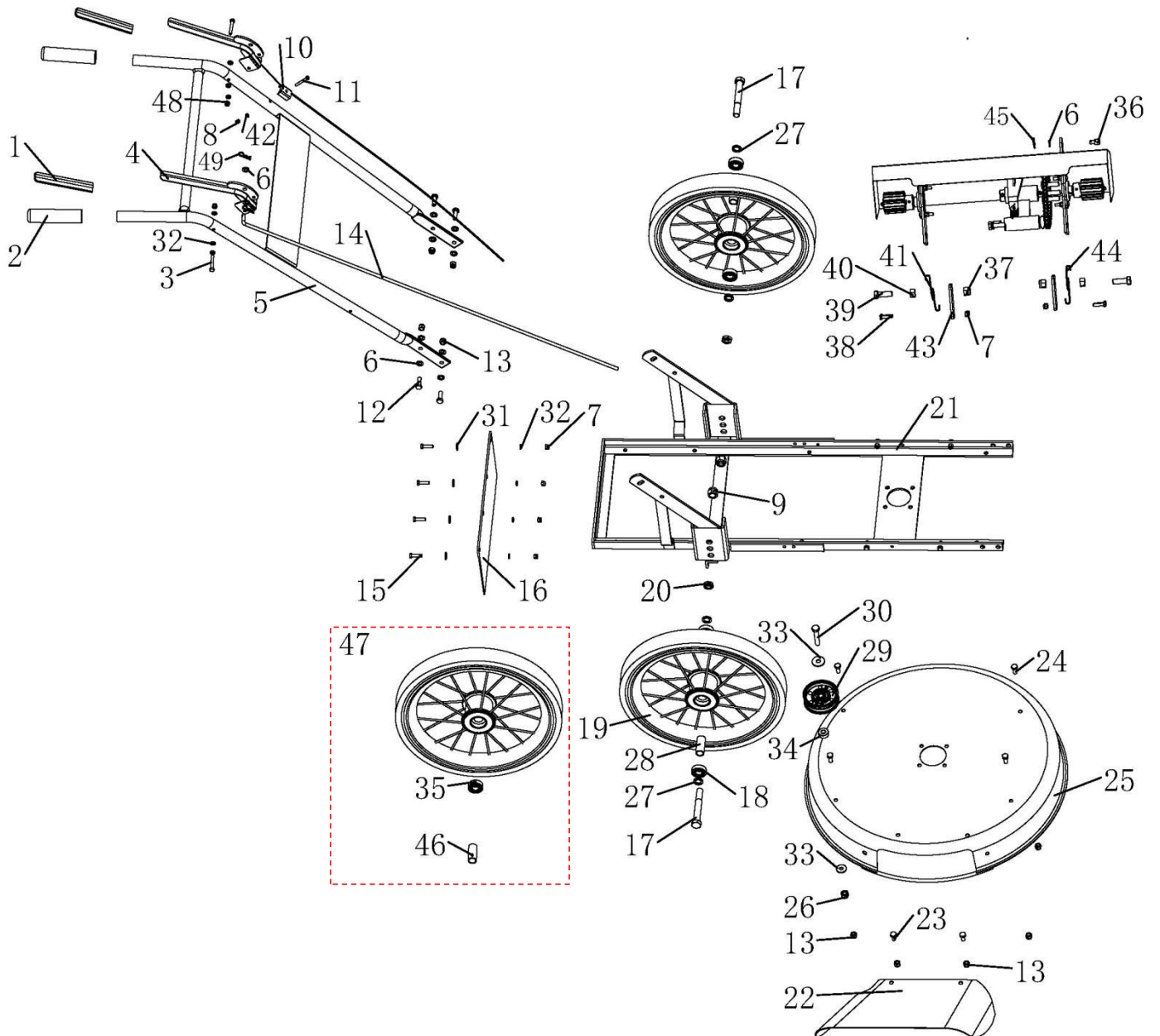
24SP Transmission Assembly



24SP Transmission Assembly

Item No.	Part Number	Description	Qty
1	200-135	Hexagon bolt M5-0.8x12	4
2	424A-041	Sprocket cover	1
3	424A-062	Bearing PFL203	2
4	424A-002a	Shaft mount weldment	1
5	200-030	Nylon nut M8 GB889	2
6	200-021	Plain washer 8 GB95	2
7	424A-060	Spring hanging plate welding element	1
8	200-119	Hexagon bolt M8-1.25x25 GB5783	2
9	424A-061	Spring	1
10	100-120a	Plain washer 1.5-16.5idx26.5 od	2
11	424A-005	Crawler	2
12	424A-006	Spring	2
13	424A-007	Drive pin	2
14	424A-008	RH Ratcher block	1
15	200-042	Plain washer 6 GB95	4
16	200-114	Roll pin5x30	5
17	200-117	Drive chain#35	1
18	424A-040A	Cross shaft	1
19	424A-011	LH Ratchet block	1
20	200-083	Bolt screws M8x8 GB79-85	1
21	424A-012	Set collar	1
22	424A-013	SP tube	1
23	424A-014	Sprocket 10 tooth	1
24	200-071	Plain washer 12 GB95	1
25	200-115	Bearing R8-2RS	2
26	200-120a	Hexagon bolt M6-1x12 GB5783	4
27	200-053	Lock washer 6 GB93	4
28	200-123	Bearing 99502	2
29	200-009	Nylon nut M6 GB889	4
30	200-011a	Bolt M6-1x20 GB801	4
31	424A-040B	Sprocket	1
32	424A-063	Sprocket joint	1
	424A-063A	Sprocket joint(for 2022 upgrade design)	1
33	424A-064	Small sprocket shaft	1
34	424A-065	Key 5x5x18	1
35	424A-066	Pulley	1
36	200-043	Plain washer 6 GB5287	1
37	600-101-0535	Bolt M5-0.8x35 GB818	1
38	600-201-0005	Nylon nut M5 GB889.1	1
39	424A-070	Transmission mechanism	1

24SP Frame Assembly

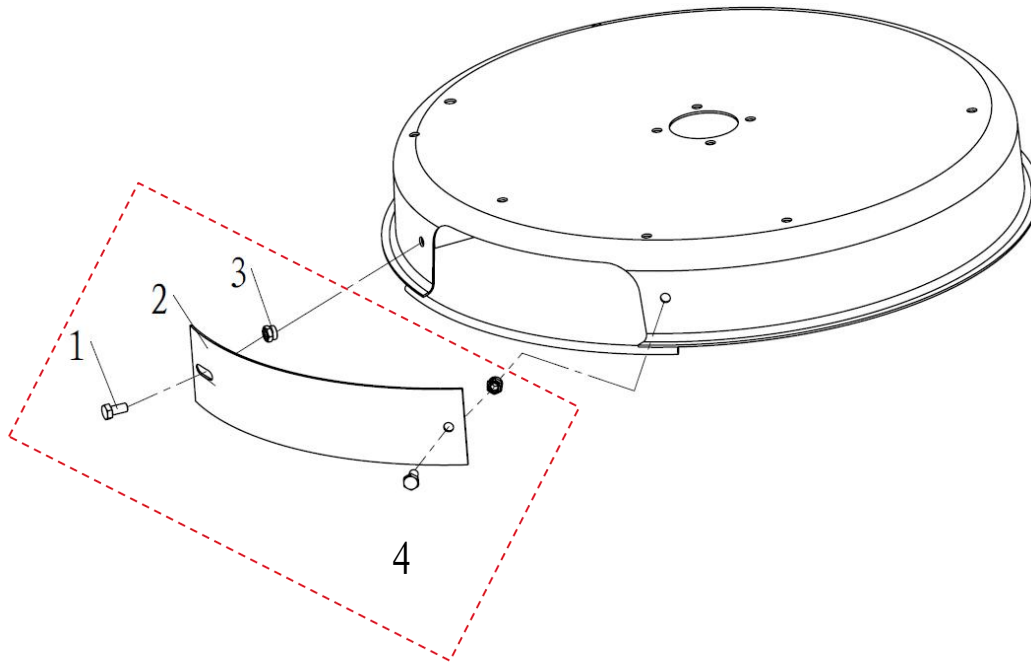


24SP Frame Assembly

Item No.	Part Number	Description	Qty
1	400-001	Grip	2
2	400-034	Handle grip	2
3	200-327	Hexagon bolt M6-1x45 GB5782	2
4	424A-072	Bail	2
5	400-035	Plow handle	1
6	200-021	Plain washer 8 GB95	11
7	200-009	Nylon nut M6 GB889	8
8	200-013	Nylon nut M5 GB889	1
9	600-205-0014	Nylon nut M14 DIN985	2
10	400-005	Safety cable	1
11	200-173	Bolt M5-0.8x40 GB818	1
12	200-119	Hexagon bolt M8-1.25x25 GB5783	4
13	200-030	Nylon nut M8 GB889	10
14	424A-017	SP rod	1
15	200-036	Hexagon bolt M6-1x20 GB5783	4
16	422B-006	Rear deflector	1
17	400-025A	Back wheel axle-hex ead	2
18	200-318	Bearing 6202-2RS	4
19	400-026P	Back Wheel-Pneumatic 16x2.125	2
20	200-174	Nut thin M14 GB6172.1	2
21	424A-021	Mower frame for 24"(A)	1
22	400-010	Chute ext	1
23	200-178	Hexagon bolt M8-1.25x16 GB5783	2
24	200-091	Hexagon bolt M8-1.25x20 GB5783	4
25	424A-022	Deck weldment	1
26	200-006	Nylon nut M10GB889	1
27	400-020a	Spacer, Bearing	4
28	424A-039	Spacer for wheel	2
29	WM2836-052	Idle pulley	1
30	200-068	Hexagon Bolt M10-1.5x55 GB5782	1
31	200-331	Plain washer 6 GB96	4
32	200-042	Plain washer 6 GB95	12
33	200-147	Plain washer 10 GB96	2
34	400-042	Spacer	1
36	100-042	Swivel, Brake rod	1

37	600-205-0012	Nylon nut M12 DIN985	2
38	200-036	Hexagon bolt M6-1x25 GB5783	4
39	200-121	Hexagon bolt M12-1.75x35 GB5783	2
40	200-107	Hexagon nut M12 GB6170	2
41	424A-025	Torsion spring LH	1
42	200-138	Plain washer 5 GB95	1
43	424A-026	Lg SP mount	2
44	424A-027	Torsion spring RH	1
45	200-069	Hair pin cotter	1
48	600-205-0006	Nut M6 DIN985	2
49	600-403-0220	Cotter Pin 2*20	2
optional			
35	424A-068	Standard 3/4"ball bearing	4
46	424A-039A	Spacer for Wheel-Pneumatic	2
47	400-026	Solid tire assembly	2

22BP/24SP Accessories



tem No.	Part Number	Description	Qty
Optional			
1	200-178	Hexagon Bolt M8-1.25x16 GB5783	2
2	400-040	Mulch Plate	1
3	200-030	Nylon Nut M8 GB889	2
4	400-041	Mulch plate Assembly	1



BRADLEY MOWERS PRODUCT REGISTRATION

CUSTOMER INFORMATION

Name: _____

Business Name: _____

Address: _____

City: _____ State: _____ Zip: _____

Phone Number: _____ Fax Number: _____

Email Address: _____

DEALER INFORMATION(place of purchase) *required

Dealer's Name: _____

Dealer's Address: _____

City: _____ State: _____ Zip: _____

Phone Number: _____

(The remaining dealer information will help you get warranty service faster should you need it.)

PRODUCT INFORMATION

Product Name and Model Number: _____

Serial Number: _____

Engine/Motor Brand and Size: _____

Engine Serial Number: _____

Engines hydraulic pumps, and batteries are warranted through their respective manufacturers. Please contact the manufacturer for more details.

Signature _____ Date of Purchase: _____

KEEP YOUR RECEIPT WITH A COPY OF THIS REGISTRATION FORM

Mail your completed form to:

Havener Enterprises, Inc.

368 S. Michigan Ave.

Bradley, IL 60915

Email your completed form to;

info@bradleymowers.com

Complete your registration form online at www.bradleymowers.com

Fax your completed form to:

888.785.1348

Warranties should be performed by an authorized Bradley Mowers dealer. All other warranty service requires prior approval.

Your product warranty is only valid if this file is completed signed, and returned to Havener Enterprises, Inc. within two weeks of product purchase. See the warranty statement for more details.

Your information may be collected but never shared outside of Havener Enterprises, Inc. and its subsidiaries