



Hydro Drive Walk Behind
Commercial Mower
36"·48"·52"



OWNER'S MANUAL & PARTS LIST

Sep. 10th 2023

www.BradleyMowers.com

^A**HAVENER**
ENTERPRISES Inc.
COMPANY

TABLE OF CONTENTS

About This Manual	3
Warranty Statement	4
Safety Information	5
Before Using Equipment	5
Operating of Equipment	6
Operating the Mower	7
Turning the Engine	8
Moving the Mower	9
Height-of-cut	10
Cutting height-of-cut	10
Measuring the height-of-cut	10
Removing and Adjusting the Blades	10
Adjusting the Front Wheels	11
General Maintenance	12
Maintenance Schedule	12
Fuel	13
Engine Oil	13
Air Filter	13
Tire Pressure	13
Blades	13
Cleaning the Mower	13
Lubrication Points	14
Service Adjustments	15
Engine to Blade Belt Adjustment For 36"	15
Engine to Blade Belt Adjustment For 48" And 52" Mower	16
Blade to Blade Belt Adjustment For 48" And 52" Mower	16
Enging to Transmission Belt Adjustment	17
Troubleshooting	18
Uncrating instruction	19-21
Rear Deck Assembly	22-23
Frame Assembly	24-27
Front Deck Assembly	28-34
Transmission Driver Assembly	35-36
Brake And Wheel Assembly	37-39
Handle Control Assembly	40-42
Front Caster Assembly	43-44
Fuel Tank Assembly	45
Safety Information Decals	46
Electrical Diagram	47
Product Registration	49

ABOUT THIS MANUAL

Congratulations on the purchase of your new Bradley commercial mower. We at Havener Enterprises, Inc. are confident that this mower will provide you with years of excellent performance, durability, and trouble-free service when operated and maintained as directed in this manual.

This owner's manual is considered a permanent part of the mower. It must be available to all of the operators and/or person(s) servicing the mower. Should the mower be resold, this manual must remain with the mower.

All information, illustrations, and specifications contained in this manual were in effect at the time of publication. Havener Enterprises, Inc. reserves the right to change, modify, and/or discontinue specifications and/or design without notice. If there is a change that has been made to your mower which is not shown or reflected in this manual, please see your authorized Bradley dealer before operating and/or servicing the equipment.

Should you ever have any questions regarding the operation, maintenance, or safety of your mower, please contact your authorized Bradley dealer who has been specially trained on operation and service of Bradley Commercial Lawn Mowers.

A space has been provided below to record information about your new Bradley Commercial Lawn Mower. Please take time to record such information for future reference, especially when you contact an Authorized Bradley dealer with questions.

Date Purchased:	_____
Model Number:	_____
Serial Number:	_____
Place of Purchase:	_____ _____

WARRANTY STATEMENT

The mowers are warranted for two (2) years from the original date of purchase against defects in material or workmanship, when operated and maintained in accordance with the mowers Owner's Manual. Commercial operators: first year is parts and labor; second year is parts only. Residential operators: first two years parts and labor; third year parts only.

The engine, transmission, and battery are warranted by their respective manufacturers. Havener Enterprises, Inc. (Havener) will replace or repair, free of charge, any part of the original equipment returned to us or our authorized servicing representative with transportation or postage prepaid and which upon examination shall be defective. The cost of replacing items that are subject to normal wear, such as but not limited to: air filters, belts, blades, oil filters, and tires, will be borne by the purchaser/owner unless such wear was caused by a defect in material and workmanship.

This warranty does not cover any mower that has been subject to neglect, negligence, misuse, or accident, or that has been operated in any way contrary to the operating instructions as specified in the Owner's Manual. This warranty does not cover any mower that has been altered or modified changing performance or durability. In addition, the warranty is not extended to repairs made necessary by the use of parts or accessories which, in the reasonable judgment of the mowers are compatible with the mower or adversely affect its operation, performance, or durability. This warranty is not transferrable.

Havener assumes no responsibility or incidental, consequential, or other damages including, but not limited to: expense for gasoline, expense of delivering the mower to a the mower authorized dealer and expense of returning it to the owner, mechanic's travel time, telephone or communication charges, rental of a like product during the time warranty repairs are being performed, travel, loss or damage to personal property, loss of revenue, loss of the use of the time or inconvenience. There are no other expressed or implied warranties and liability for consequential damages under this warranty and are excluded to the extent exclusions are permitted by law. No warranty service will be authorized until your registration card has been received by the manufacturer.

SAFETY INFORMATION

Read This Manual Carefully and Thoroughly Before Operating Your Mower!

1. Carefully and thoroughly read the owner's manual. Allow adequate time to fully understand the controls and operation of the equipment. Never allow anyone to operate the mower that has not read and fully understood the owner's manual.
2. Never allow anyone to operate the mower who is not old enough, large enough, and strong enough to safely handle the machine.
3. Do not carry passengers. Avoid mowing while people, especially children, and pets, are nearby since rotating blades can throw rocks and other items with enough force to cause serious injury.

BEFORE USING EQUIPMENT

OPERATOR

Wear protective clothing while mowing. Long trousers and safety glasses will help reduce the risk of injury from thrown objects. It is recommended that steel toe shoes with aggressive soles or some other type of substantial footwear be worn to help protect your feet and maintain traction on slopes or uneven ground.

MOWING AREA

Thoroughly inspect the area where the equipment is to be used. Look for items such as stones, sticks, bones, wire, and other foreign objects. When struck by the mower, these and other objects may become projectiles that could lead to serious injury and/or death.

MOWER

For your safety and the long life of your mower, always inspect the mower before each use. Before inspection, make sure the mower is on a flat and level surface, the blades are disengaged, the ignition switch off with the key removed, and the spark plug wire is off of the spark plug(s) and hidden so that accidental contact cannot be made.

GENERAL CONDITION

- Walk around the mower looking for any fluid spills or leaks on or underneath the mower. Remove any and all excessive debris, dirt, and/or fluids.
- Look for signs of damage or excessive wear. Check the tightness of all nuts, bolts, pins, and screws. Tighten any that may be loose and replace any that may have been lost during use.
- Be sure the safety interlock controls are operating properly so that the engine cannot be started unless the ground speed control lever is in neutral and the blades disengaged.
- Check the mower blades for any damage or abnormal wear and replace in sets so that they are balanced.
- Check the mower cutting height to assure a high quality and even cut.
- Check the tire pressure on all four (4) tires.
- Check all belts for proper wear and correct tension.
- Check engine oil and air filter as recommended in the engine manufacturer's operators manual.

OPERATION OF EQUIPMENT

1. **⚠ DANGER: GASOLINE IS HIGHLY FLAMMABLE AND EXPLOSIVE. DO NOT ADD FUEL WHILE THE ENGINE IS RUNNING OR IS HOT. KEEP OPEN FLAMES, SPARKS, AND HEAT AWAY FROM THE FUEL AND STORE FUEL IN CONTAINERS SPECIFICALLY DESIGNED FOR THAT PURPOSE. ADD FUEL OUTDOORS ONLY AND IF THE FUEL IS SPILLED, DO NOT START THE ENGINE. MANUALLY PUSH THE MOWER AWAY FROM THE SPILL AND IMMEDIATELY WIPE UP.**
2. **⚠ DANGER: GASES EMITTED BY A CHARGING BATTERY ARE EXPLOSIVE. KEEP HEAT SPARKS AND OPEN FLAMES AWAY FROM A CHARGING BATTERY.**
3. Do not operate the engine in a confined space where dangerous carbon monoxide fumes can collect. Carbon monoxide is odorless, tasteless, and can be fatal.
4. Mow only in daylight.
5. Make sure the mower is in neutral and the blades are disengaged before attempting to start the engine.
6. Do not stop or start suddenly when going uphill. Never use riding attachments on slopes since there is an increased risk that they might roll over.
7. Avoid steep slopes and use extreme caution when changing directions or speed when operating on a slope.
8. Be extremely careful when operating on a slope or when the grass is damp or wet. Reduced traction could cause sliding. Never mow by pulling the mower back towards you as you might slip.
9. Watch for traffic when crossing surfaces other than grass (i.e. transporting), loading a trailer or vehicle, or when the mower is not in use.
10. Never operate the mower with defective guards, shields, or without the safety devices securely mounted in place.
11. Never direct discharge of material toward bystanders or allow anyone near the mower while in operation.
12. Do not change the engine governor settings or over-speed the engine.
13. Always stop the engine whenever you leave the mower, even for a moment.
14. To help reduce the risk of a fire hazard, keep the engine and the area around the engine free of grass, leaves, or any other type of foreign material.
15. Beware of cutting edges. Always wear gloves for safety when performing blade maintenance activities. Beware on multiple blade units since the rotation of one blade may cause the rotation of the other blades.
16. Keep body and hands away from pin holes or nozzles that eject hydraulic fluid since fluid escaping under pressure may have sufficient force to penetrate skin and cause serious injury. If foreign fluid is injected into the skin, it must be surgically removed within a few hours by a doctor familiar with this form of injury. Always use paper or cardboard and not hands to search for leaks.

OPERATING THE MOWER

It is recommended that before you operate the mower, you allow adequate time to fully understand the controls and operation of the equipment. When reading this manual, it is recommended that you do so with the equipment nearby for quick orientation, to reference the controls, and understand maintenance adjustments.

OPERATING CONTROLS

Before continuing to read the manual, it is recommended that you take adequate time to identify the controls of the mower.



- A Blade Control Lever
- B Throttle control
- C Choke control
- D Safety switch
- E Left control lever

- F Right control lever
- G Ignition switch
- H Parking brake lever
- I Neutral Lever


STARTING THE ENGINE (Make Sure Battery Is Fully Charged)



DANGER: DO NOT OPERATE THE ENGINE IN A CONFINED SPACE WHERE DANGEROUS CARBON MONOXIDE FUMES CAN COLLECT. CARBON MONOXIDE IS ODORLESS, TASTELESS, AND CAN BE FATAL.

After going through the steps on pages 5 and 6, you are ready to start the engine.

NOTE: THIS UNIT WAS SHIPPED WITHOUT GAS, BE SURE TO ADD FRESH GAS AND DOUBLE CHECK THE OIL IN THE ENGINE BEFORE ATTEMPTING TO START THE MOWER.

1. Make sure the Parking Brake Lever is in the "ON" position.
2. Make sure the Neutral lever is disengaged.
3. Make sure the Blade Control Lever is in the "OFF" position.
4. Slide the Throttle Control to the  position, "Choke" if the engine is cold.
5. For Electric Start engines, turn the key clockwise to the "Start" position. Once started, the key will return to the "Run" position. Note: Do not keep the key in the "Start" position more than a few seconds. If engine does not start, wait 15 seconds before trying again.
6. Once the engine is running, slowly move the Throttle Control to the desired engine speed.

MOVING THE MOWER FORWARD

CAUTION: BECOME COMPLETELY FAMILIAR WITH THE OPERATION CHARACTERISTICS OF THE MOWER BEFORE ATTEMPTING TO USE IT.

1. Make sure the Left Control Lever is down out of the Neutral Lock position.
2. Gently push the controls forward. Push the Left and Right Control Levers away from you an equal amount to go straight. It is recommended you start slow and increase your speed as you increase your comfort with the controls.
3. Allowing the Left and Right Control Levers to return to a center neutral position allows the mower to stop moving. Note: if the operator lets go of the Left Control Lever while the blades are engaged and/or the mower is moving, the safety interlock system will stop the engine. To restart the mower, reset the Blade Control Lever to "Off" and the parking brake to the "On" position.

NOTE: Top speed is suggested only for transport.

MOVING THE MOWER IN REVERSE

Slowly and evenly pull the Left and Right Control Levers toward you. The more the Control Levers are pulled toward you, the faster you will move. It is recommended to move in reverse slowly.

NOTE: When moving in reverse, be aware of your surroundings by looking down and behind.

STOPPING THE MOWER

Gently let the Left and Right Control Levers return to their neutral, at rest position. If the operator is leaving the operator position for any reason, disengage the blades, shut off the engine, engage the parking brake, and remove the key.

NOTE: Park the mower on level ground. If it is not possible to do so, be sure to block the wheels to prevent the mower from rolling away.

TURNING THE MOWER

To turn the mower in the desired direction, gently pull the chosen direction's Control Lever toward you (i.e. to turn right, pull the Right Control Lever toward you). The more a particular Control Lever is pulled toward you, the sharper the turn the mower will make.

MOWING

⚠ DANGER: THOROUGHLY INSPECT THE AREA WHERE THE MOWER IS TO BE USED. LOOK FOR ITEMS SUCH AS STONES, STICKS, WIRE, AND OTHER FOREIGN OBJECTS. WHEN STRUCK BY THE MOWER, THESE AND OTHER OBJECTS MAY BECOME PROJECTILES THAT COULD LEAD TO SERIOUS INJURY AND/OR DEATH. CLEAR AREA OF ALL DEBRIS AND KEEP PEOPLE AND PETS AWAY.

⚠ DANGER: NOT OPERATE THE MOWER WITH DEFECTIVE GUARDS OR SHIELDS. DO NOT OPERATE THE MOWER WITHOUT THE SAFETY DEVICES SECURELY IN PLACE.

For the highest quality of cut and performance, mow with the engine at full throttle. Quality of cut may be determined by the ground speed and speed of the mower. Generally, the slower the mower travels across the terrain, the better the cut.

1. With the engine running and the mower placed at the beginning of the area to be mowed, make sure the left control lever is down and out of the neutral lock position.
2. Push the Blade Control Lever forward to the "On" position to engage the blades.
3. To disengage blades, come to a complete stop and pull the Blade Control Lever to the "Off" Position.

MOVING THE MOWER WITH THE ENGINE OFF

1. Engage the Parking Brake Lever by moving it to the "On" position.
2. Engage the Neutral Lever by moving it in the direction of the arrow.
3. Disengage the Parking Brake Lever by moving it to the "Off" position.
4. Move the mower.

NOTE: Be careful of the weight of the mower as you move it without using the engine.

5. Before starting the mower, make sure the driving controls are in neutral with left control in "up" position, the parking brake is engaged and the neutral lever is disengaged.

PARKING THE MOWER

Pull the Parking Brake Lever to the "On" position.

NOTE: Gently engage the braking mechanism. Excessive force may cause damage.

CAUTION: IF YOU ARE NOT FAMILIAR WITH THE OPERATION OF THE HYDRO DRIVE AND ZERO TURN FEATURE, PRACTICE TURNING AND MANUEVERING WITH THE CONTROLS BEFORE ENGAGING THE BLADE

CUTTING HEIGHT

CHANGING THE CUTTING HEIGHT

⚠ DANGER: BEFORE MAKING ANY ADJUSTMENTS AND/OR SERVICING YOUR MOWER, MAKE SURE THE MOWER IS ON LEVEL GROUND, THE BLADES DISENGAGED, THE KEY REMOVED, AND THE ENGINE OFF WITH THE SPARK PLUG WIRE(S) REMOVED FROM THE SPARK PLUG(S) TO PREVENT ACCIDENTAL CONTACT.

When your Bradley mower is shipped from the factory, the mowing height is set at 2 1/2". The mowing height may be raised or lowered using a combination of front wheel spacers and blade bolt assembly spacers. It is recommended that you first set your cutting height to the highest level using the blade spacers and then lower the cutting height using the front wheel spacers.

MEASURING THE CUTTING HEIGHT

CAUTION: BEWARE OF THE CUTTING EDGES ON THE BLADES. THE ROTATION OF ONE BLADE MAY CAUSE THE OTHER BLADE(S) TO ROTATE. ALWAYS WEAR WORK GLOVES WHEN HANDLING BLADES.

1. Park the mower on level ground.
2. With the Blade Control Lever in the "Off" position, the engine off with the key removed, and the spark plug wire(s) removed from the spark plug(s), reach through the discharge chute and slowly rotate the blade so that the length of the blade is going from the front of the mower towards the rear.
3. Using a measuring device, measure the distance from the front tip of blade's cutting edge to the ground. As a general rule, if measuring the cutting height on a hard surface such as concrete, the mower will usually mow about 1/4" lower in the grass due to the weight of the machine.

REMOVING AND ADJUSTING THE BLADES

CAUTION: BEWARE OF THE CUTTING EDGES ON THE BLADES. THE ROTATION OF ONE BLADE MAY CAUSE THE OTHER BLADE(S) TO ROTATE. ALWAYS WEAR WORK GLOVES WHEN HANDLING BLADES.

1. Park the mower on level ground and block the rear wheels to prevent accidental rollback.
2. Raise the front end of the mower using a jackstand.
3. Using two (2) 15/16" box end wrenches, use one wrench to loosen nut "A" while holding blade bolt "C" with the other wrench.
4. Slide the blade bolt down through the mower deck and out.
5. To raise the blades to the height desired, remove the appropriate amount of spacers from the blade bolt. Example: IF the height of cut needs to be raised 1/2", move two (2) of the 1/4" spacers "B" on each blade from underneath the mower (Figure 1) to the top of the mower (Figure 2).
6. Reinsert the blade bolt through the cutting deck.
7. Install the blade spacers that were removed back onto the blade bolt followed by the nut and tighten. **IMPORTANT:** The amount of spacers should always be the same on each blade bolt. Never put the spacers below the blade.

ADJUSTING THE FRONT WHEELS (FIGURE 3)

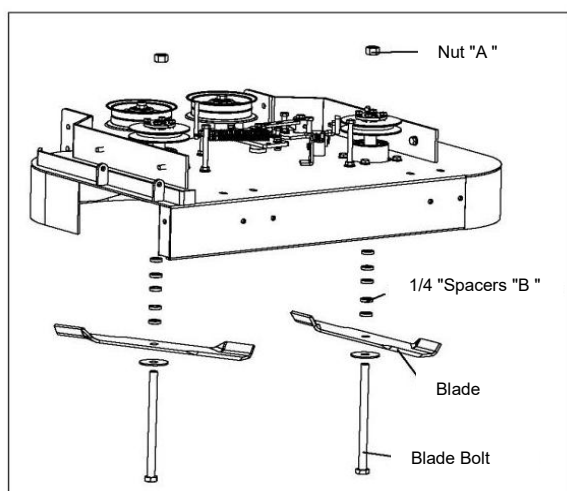


Figure 1

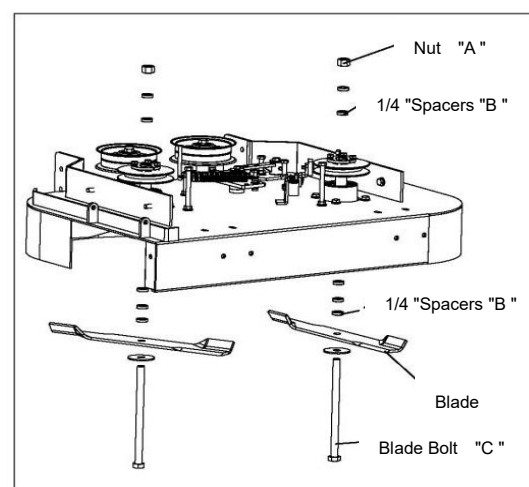


Figure 2

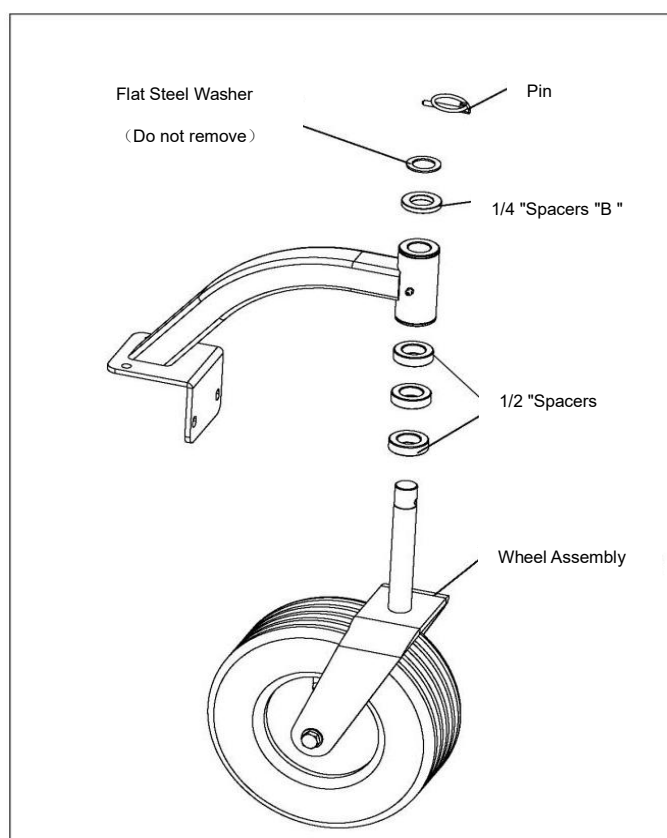


Figure 3

GENERAL MAINTENANCE

Proper maintenance and adjustment of your Bradley hydro mower is necessary to keep the mower in good, working and safe condition. The maintenance of the mower is the responsibility of the owner/operator and must be performed at regular intervals. When replacing any parts or servicing your mower, be sure to use only genuine Bradley mower replacement parts to ensure quality performance of your mower.

⚠ DANGER: BEFORE MAKING ANY ADJUSTMENTS AND/OR SERVICIN YOUR MOWER, MAKE SURE THE MOWER IS ON LEVEL GROUND, THE BLADES DISENGAGED, THE KEY REMOVED, AND THE ENGINE OFF WITH THE SPARK PLUG WIRE(S) REMOVED FROM THE SPARK PLUG(S) TO PREVENT ACCIDENTAL CONTACT. IF ADJUSTMENT OR MAINTENACE IS BEING PERFORMED AFTER OPERATION OF THE MOWER, ALLOW THE UNIT TO COOL AS HEAT BUILDUP COULD CAUSE SEVERE BURNS.

MAINTENANCE SCHEDULE

ITEM	PROCEDURE	TIME INTERVAL				
		Break-In (first 5 hours)	Every 8 Hours (Daily)	Every 40 Hours (Weekly)	Every 100 Hours (Bi-weekly)	Every 200 Hours (Monthly)
Belts	Inspect(adjust as needed)	√	√			
Blades	Inspect and Sharpen		√			
Engine Air Filter	Inspect (see engine owner's manual)		√			
Engine Cooling Areas	Clean (see engine owner's manual)				√	
Engine Oil	Check (see engine owner's manual)		√			
	Change (see engine owner's manual)	√			√	
Engine Oil Filter	Change (see engine owner's manual)	√				√
Engine Spark Plug(s)	Inspect (see engine owner's manual)					√
Fuel Filter	Replace				√	
Fuel Line	Check				√	
	Replace	Every 2 years				
Grease Fittings	Refer to page 15					
Hardware	Check for proper tightness	√		√		
Mower Main Frame	Remove debris from under belt cover		√			
	Power wash engine mower			√		
Safety Interlock System	Check operation and switches		√			
Tires	Check air pressure		√			
Battery	Change battery if not used for 30 days					√

FUEL

⚠ DANGER: GASOLINE IS HIGHLY FLAMMABLE AND EXPLOSIVE. DO NOT ADD FUEL WHILE THE ENGINE IS RUNNING OR IS HOT. KEEP OPEN FLAMES, SPARKS, AND HEAT AWAY FROM THE FUEL AND STORE FUEL IN CONTAINERS SPECIFICALLY DESIGNED FOR THAT PURPOSE. ADD FUEL OUTDOORS ONLY AND IF FUEL IS SPILLED, DO NOT START THE ENGINE. MANUALLY PUSH THE MOWER AWAY FROM THE SPILL AND WIPE UP IMMEDIATELY.

Refer to the Engine Owner's Manual for the type of fuel to use.

ENGINE OIL

NOTE: CHECK THE ENGINE OIL BEFORE EACH USE. Refer to the Engine Owner's Manual for the type of oil, oil change intervals, and the proper procedures to check and change oil.

AIR FLITER

Refer to the Engine Owner's Manual for recommended maintenance.

TIRE PRESSURE

The recommended tire pressure for the two drive wheels is 22 P.S.I. The recommended tire pressure for the two front wheels is 46 P.S.I. Incorrect tire pressure may cause the mower to pull to one side and/or cause an uneven cut. **Always use caution when filling the tire and never exceed the recommended tire pressure.**

BLADES

⚠ DANGER: BEFORE WORKING ON THE BLADES, MAKE SURE THE ENGINE IS OFF, KEY REMOVED, AND THE SPARK PLUG(S) WIRES REMOVED FROM THE SPARK PLUG(S) TO PREVENT ACCIDENTAL CONTACT.

CAUTION: BEWARE OF THE CUTTING EDGES ON THE BLADES. THE ROTATION OF ONE BLADE MAY CAUSE THE OTHER BLADE(S) TO ROTATE. ALWAYS WEAR WORK GLOVES WHEN PERFORMING BLADE MAINTENANCE.

Blades should be inspected on a daily basis for nicks, bends, and/or excessive wear. If the blades are worn, cracked, bent, or damaged, replace with a new blade immediately before using the mower. Use only genuine Bradley replacement blades as substitute blades may not meet Bradley mower specifications and may be dangerous.

To remove the blades, refer to: page 11, "Removing and Adjusting the Blades."

When sharpening the blades, sharpen only the cutting edges and try to maintain the original angle of the blade. Do not make the cutting edge "razor sharp." Remove the same amount from each side of the blade so that balance is maintained.

CLEANING THE MOWER

It is recommended that the mower be cleaned on a daily basis. Excessive accumulation of dirt, debris, oil, etc. causes premature wear on the components and may present a potential safety hazard.

LUBRICATION POINTS

To ensure proper lubrication on moving parts, it is recommended that you lubricate the following components with a high-quality EP2 high-temperature based grease or equivalent. Should the conditions of operation be more severe than normal, the lubrication interval may be shorter than recommended. GRT/OPE Grease is the recommended lubricant.



Blade Bell Crank
Every 40hrs/Weekly



Deck Idler Arm pivot
Every 40hrs/Weekly



Link Idler Arm pivot
Every 40hrs/Weekly



Blade Engagement pivot
Every 40hrs/Weekly



Front Caster Support
Right and Left Side
Every 40hrs/Weekly



Front Caster Wheel
Right and Left Side
Every 40hrs/Weekly

SERVICE ADJUSTMENTS

⚠ DANGER: BEFORE MAKING ANY ADJUSTMENTS AND/OR SERVICING YOUR MOWER, MAKE SURE THE MOWER IS ON LEVEL GROUND, THE BLADES DISENGAGED, THE KEY REMOVED, AND THE ENGINE OFF WITH THE SPARK PLUG WIRE(S) REMOVED FROM THE SPARK PLUG(S) TO PREVENT ACCIDENTAL CONTACT. IF ADJUSTMENT OR MAINTENANCE IS BEING PERFORMED AFTER OPERATION OF THE MOWER, ALLOW THE UNIT TO COOL AS HEAT BUILDUP COULD CAUSE SEVERE BURNS.

ENGINE TO BLADE BELT ADJUSTMENT FOR 36" MOWER (FIGURE 4)

1. Remove the deck cover and move the blade control lever on the control console to the "ON" position.
2. With approximately 10 pounds of pressure being applied on the engine to blade belt midway between the pulleys, the belt should move approximately 1/2".
3. If the belt moves more than 1/2", move the blade control lever back to the "OFF" position.
4. Remove cotter pin "A" and the flat washer from blade rod "D" and pull the blade rod from idler arm "C".
5. Loosen the nut and rotate turn buckle tube "B" clockwise, or towards, the rear of the idler pulley approximately 2 to 3 turns. Tighten the nut. Reinsert blade rod "D" back into idler arm "C" and secure with the flat washer and cotter pin.
6. Repeat steps 1 and 2 to check for proper tension. If more tension is needed, repeat steps 3-5 until the proper tension is achieved.
7. Move the blade control lever on the control console to the "OFF" position, check that the brake pad is against the pulley, if not adjust nut "E". Move the blade control lever to the "ON" position and check that the brake pad cannot touch the pulley.
8. Replace the deck cover.

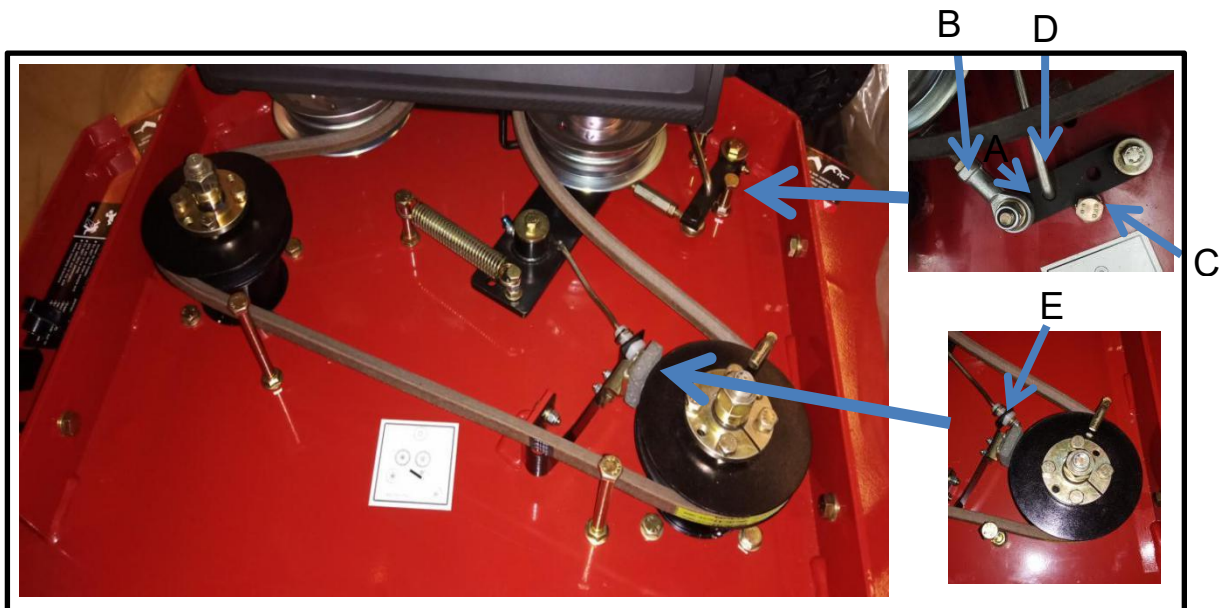


Figure 4

ENGINE TO BLADE BELT ADJUSTMENT FOR 48" AND 52" MOWER (FIGURE 5)

1. Remove the deck cover and move the blade control lever on the control console to the "ON" position.
2. With approximately 10 pounds of pressure being applied on the engine to blade belt midway between the pulleys, the belt should move approximately 1/2"
3. If the belt moves more than 1/2", move the blade control lever back to the "OFF" position.
4. Remove cotter pin "A" and the flat washer from swivel "B" and pull the swivel from idler arm "C".
5. Loosen the nut and rotate turn buckle tube "B" clockwise, or towards, the rear of the idler pulley approximately 2 to 3 turns. Tighten the nut. Reinsert blade rod "D" back into idler arm "C" and secure with the flat washer and cotter pin.
6. Repeat steps 1 and 2 to check for proper tension. If more tension is needed, repeat steps 3 — 5 until the proper amount of tension is achieved.
7. Replace the deck cover.

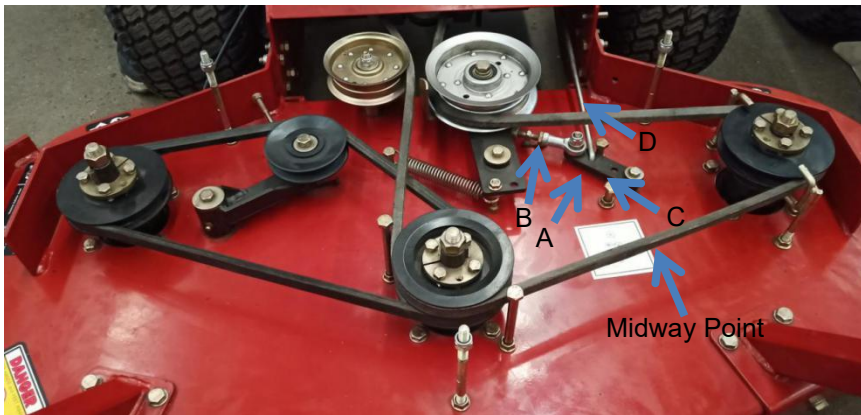


Figure 5

BLADE TO BLADE BELT ADJUSTMENT FOR 48" AND 52" MOWER (FIGURE 6)

1. Remove the deck cover.
2. With approximately 10 pounds of pressure applied on the blade to blade belt, midway between the pulleys, the belt should move approximately 1/2"
3. If the belt moves more than 1/2", loosen nut "F" and turn nut "E" clockwise approximately 1 to 2 turns and then tighten the nuts.
4. Recheck the tension on the blade to blade belt. If it is still loose, repeat step 3. Important: Do not over tighten the blade to blade belt. Over tension can cause premature wear on the belts and blade spindles.
5. Replace the deck cover.

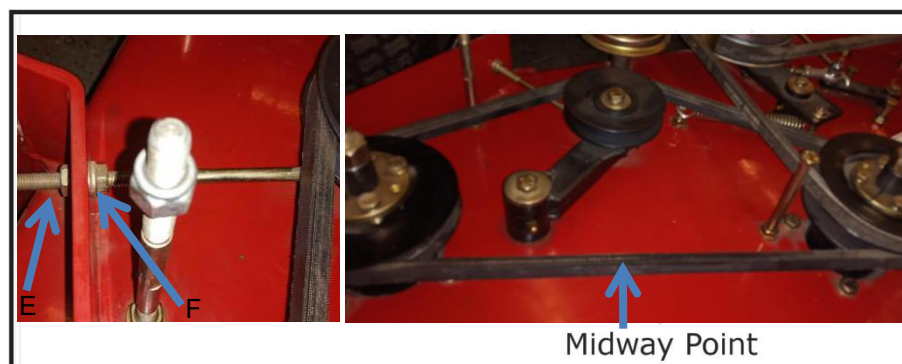
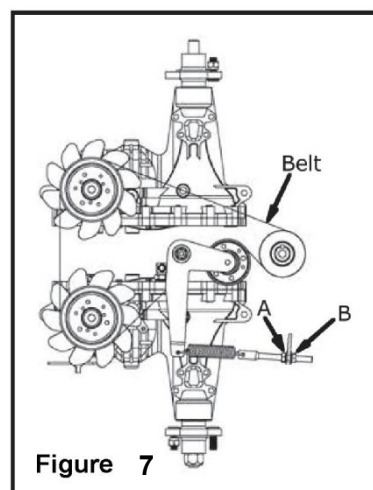


Figure 6

ENGINE TO TRANSMISSION BELT ADJUSTMENT (FIGURE 7)

1. The engine to transmission belt, located underneath the rear deck deck, should move 1/8" with 5 lbs of pressure applied midway on the belt between the transmission pulley and the engine output shaft pulley.
2. To adjust the belt, loosen nut "A" and turn nut "B" 2 to 3 turns and tighten the nuts.
3. Repeat steps 1 — 2 until the proper tension amount is achieved.



SAFETY SYSTEM ADJUSTMENT

DANGER: DO NOT BYPASS, MODIFY, OR DISCONNECT THE SAFETY SYSTEM. MAKE SURE THAT THE SAFETY INTERLOCK SYSTEM IS FULLY OPEARTIONAL EACH TIME BEFORE MOWING. FAILURE TO DO SO COULD PRESENT DANGER TO YOU AND OTHERS.

1. Move the blade control lever to the "OFF" position.
2. Pull the blade rod from the idler arm
3. Loosen nut "D" and turn the blade rod 1 to 3 turns, reinsert blade rod back into idler arm. And secure it with the flat washer and cotter pin.
4. Check that safety switch "C" is firmly against blade bell crank, if not, repeat steps 2 and 3 until the plunger of switch C is firmly depressed against the blade bell crank. (see Figures 8 — 9)



Figure 8

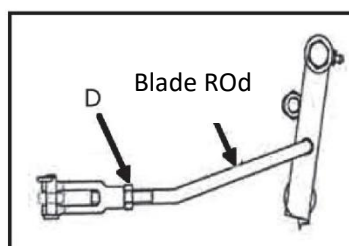


Figure 9

TROUBLESHOOTING

PROBLEM	POSSIBLE CAUSE	SOLUTION
Engine does not start Check battery and make sure battery is fully charged	Parking Brake Lever in "OFF" position	Move lever to "ON" position
	Blade Control Lever in "ON" position	Move lever to "OFF" position
	Out of fuel	Fill fuel to tank
	Fuel shut-off valve closed	Open valve
	Safety interlock switch out of adjustment	Adjust switches
	Spark plug loose or disconnected	Connect spark plug wire
	Faulty spark plug	Replace
	Dirty air filter	Replace
	Clogged fuel filter	Replace
	Bad fuel	Drain and refill With fresh fuel
Engine starts hard or loses power	Dirt or water in the fuel tank	Drain and clean fuel tank
	Clogged or dirty fuel filter	Replace
	Dirty air filter	Replace
	Faulty spark plug	Replace
	Incorrect oil level	Check and adjust
Engine overheats	Dirt in fuel line	Clean and replace
	Dirty grass screen	Clean
	Incorrect oil level	Check and adjust
	Dirty air filter	Check and adjust
	Faulty spark plug	Replace
Mower pulls to one side	Incorrect tracking adjustment	Check and adjust
Blades do not turn	Blade belt broken or slipping	Replace or adjust
	Excessive build-up underneath mowing deck	Check and clean
Rough or uneven cut	Tire pressure not equal	Check and adjust
	Unequal spacer configuration on blades or front casters	Check and adjust
	Mower speed too fast for mowing conditions	Reduce speed
	Blades bent	Check and replace
	Blades dull	Sharpen or replace
	Excessive build-up underneath mowing deck	Check and clean
	Blades installed upside down	Remove and replace in correct direction

Uncrating instruction

1. Remove the packing frame by using two 16mm wrenches.



2. Remove the plastic.

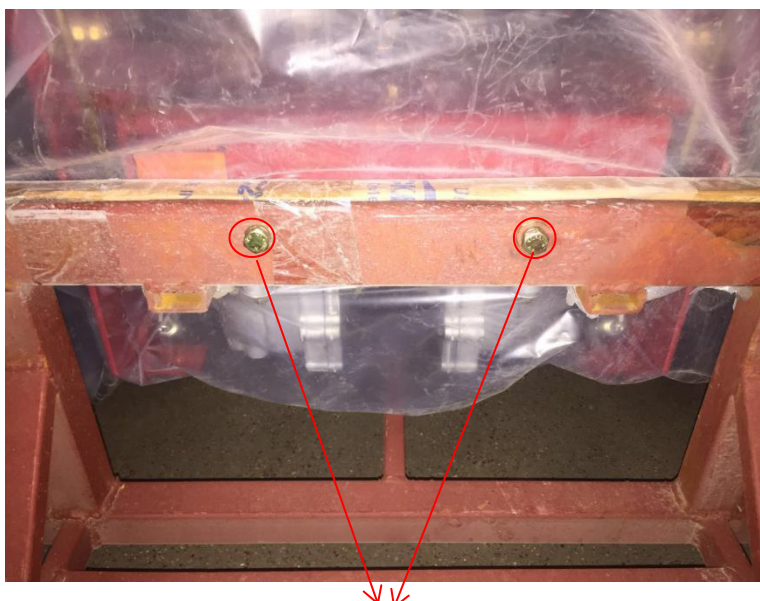


3. Remove the accessory box which includes the following parts:

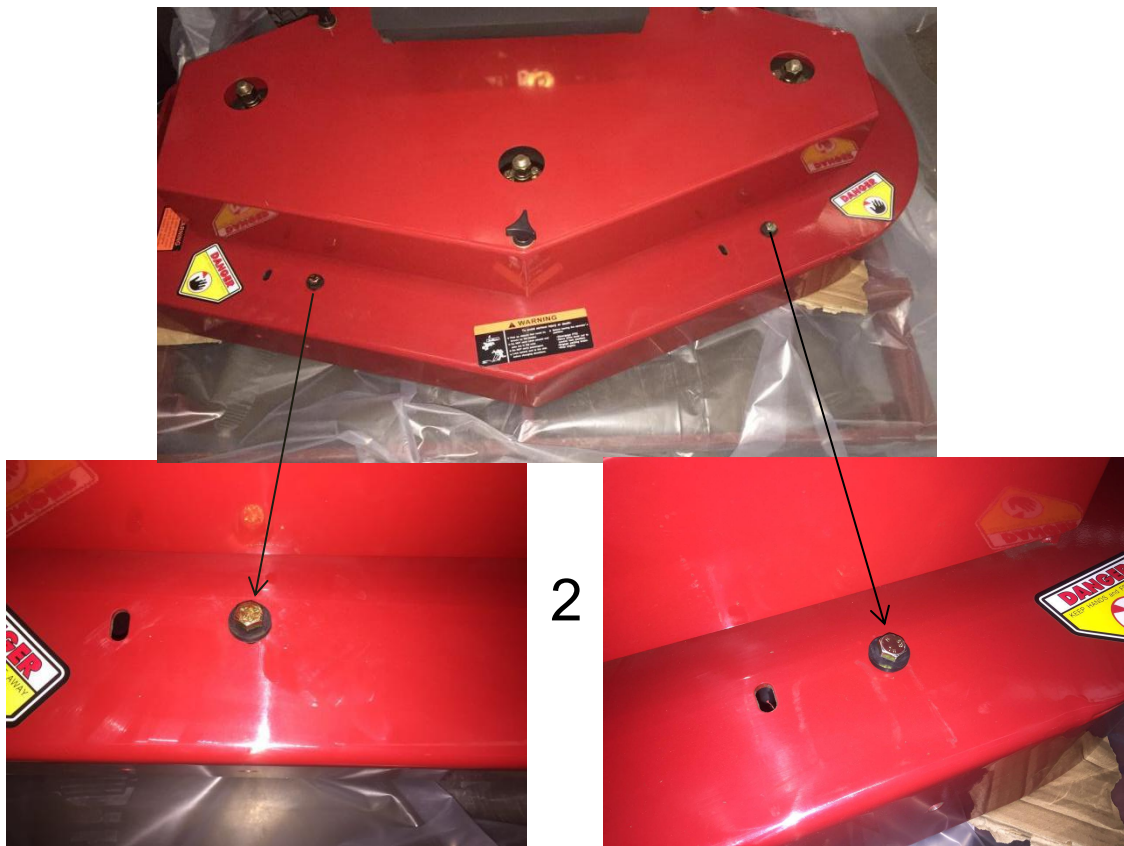
Left & Right front wheel assembly, bolts.



4. Remove the fixed bolts.



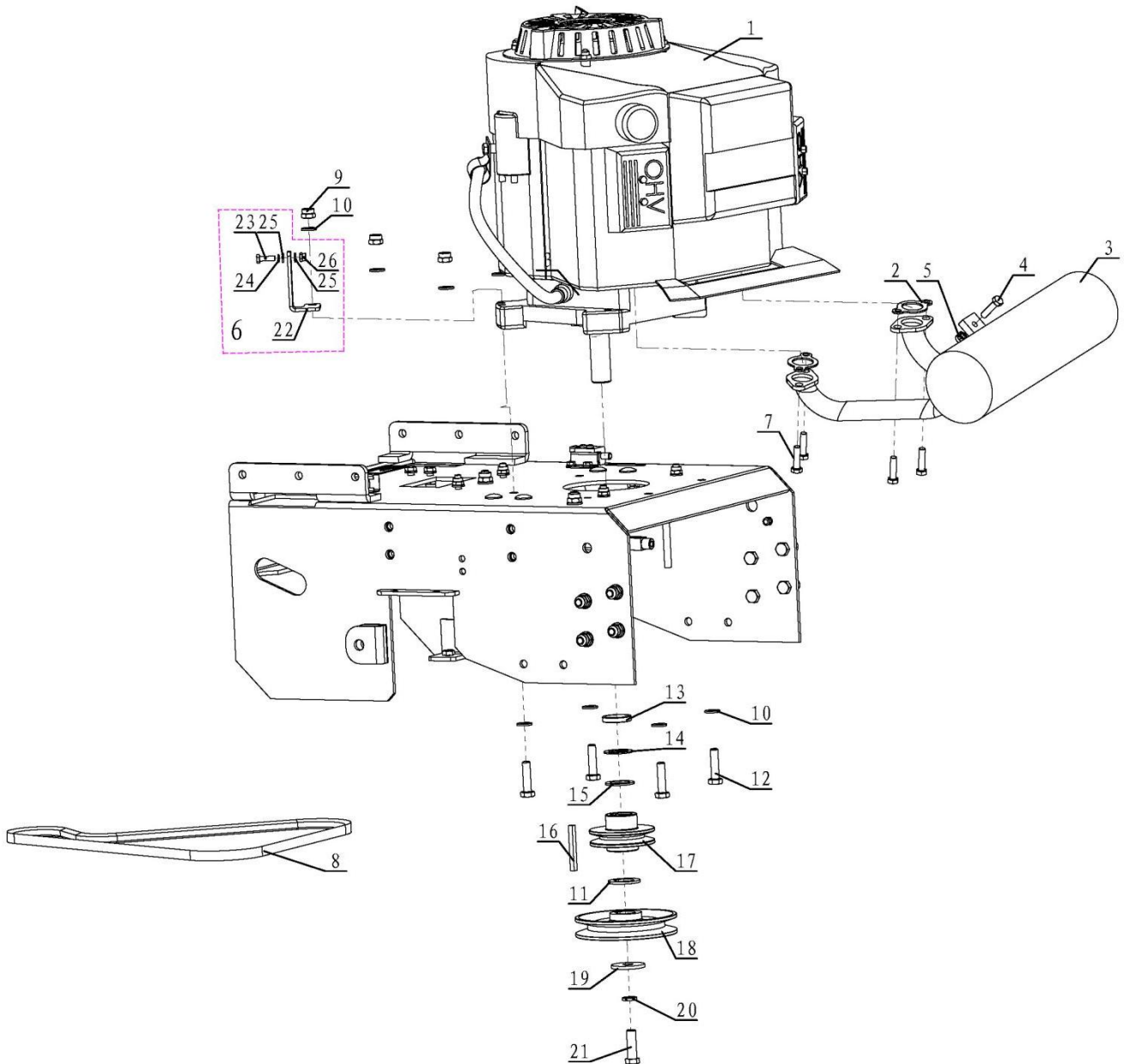
1



5. Install the front wheels, fill the engine oil. Put 3.25" block under the rear wheel and 5.5" block under the front wheel. Drive the mower out of the crate.



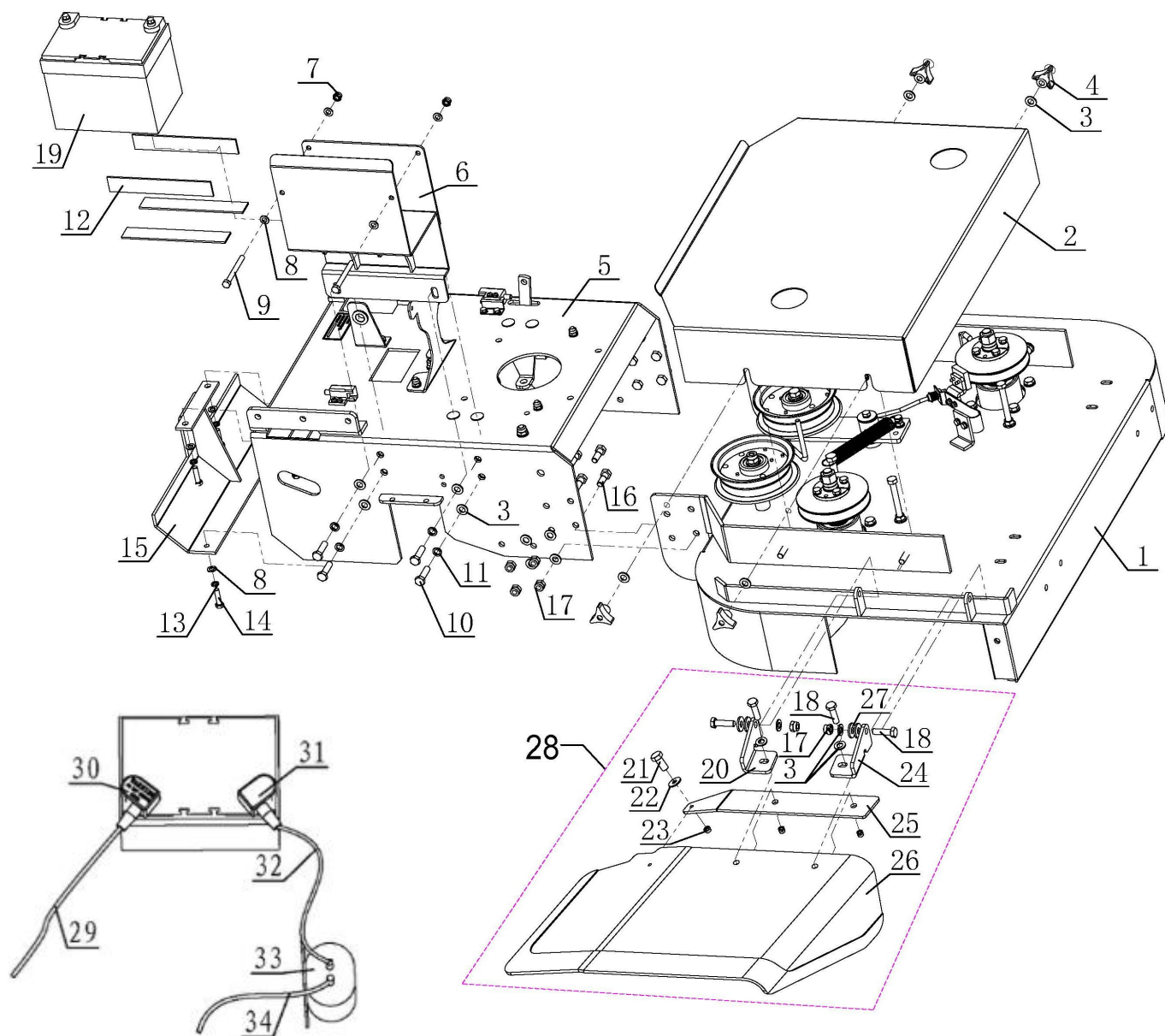
36" 48" & 52" Rear Deck Assembly



36" 48" & 52" Rear Deck Assembly

Item	Part Number	Description	Qty
1	336-282	B&S ENGINE 23HP-CT-WT36	1
	348-109	B&S ENGINE 25HP-CT-WT48/52	1
2	601-208	Gasket	2
3	336-240	Muffler	1
4	600-002-0816	Bolt M8-1.25×16 GB5783	1
5	600-201-0008	Nylon Nut M8 GB889	1
6	601-302	Negative line mounting plate assembly	1
7	200-037	Bolt 5/16-18	4
8	336-155	Transmission Belt	1
9	200-006	Nylon Nut M10 GB889	4
10	100-003	Plain Washer 10 GB95	7
11	336-235	Adjustable washer	1
12	200-052	Bolt M10-1.5×45 GB5783	4
13	100-099a	Spacer 6.5	1
14	336-188	Washer 1.5x26idx44od	1
15	336-189	Washer 2x26idx44od	1
16	300-067a	Key6.35x6x60	1
17	300-065	Engine pulley	1
18	300-066	Pulley,single (for 36" & 52")	1
	300-066a	Pulley,single (for 48")	1
19	100-118	Plain Washer 3×12 id×38 od	1
20	600-904-0011	Lock Washer 7/16	1
21	200-050	Bolt 7/16-20 , Engine	1
22	601-295	Negative line mounting plate	1
23	600-002-0620	Hexagon Bolt M6*20	1
24	600-305-0006	Spring Washer 6	1
25	600-301-0006	Plain Washer 6 GB95	2
26	600-201-0006	Nylon Nut M6 GB889.1	1

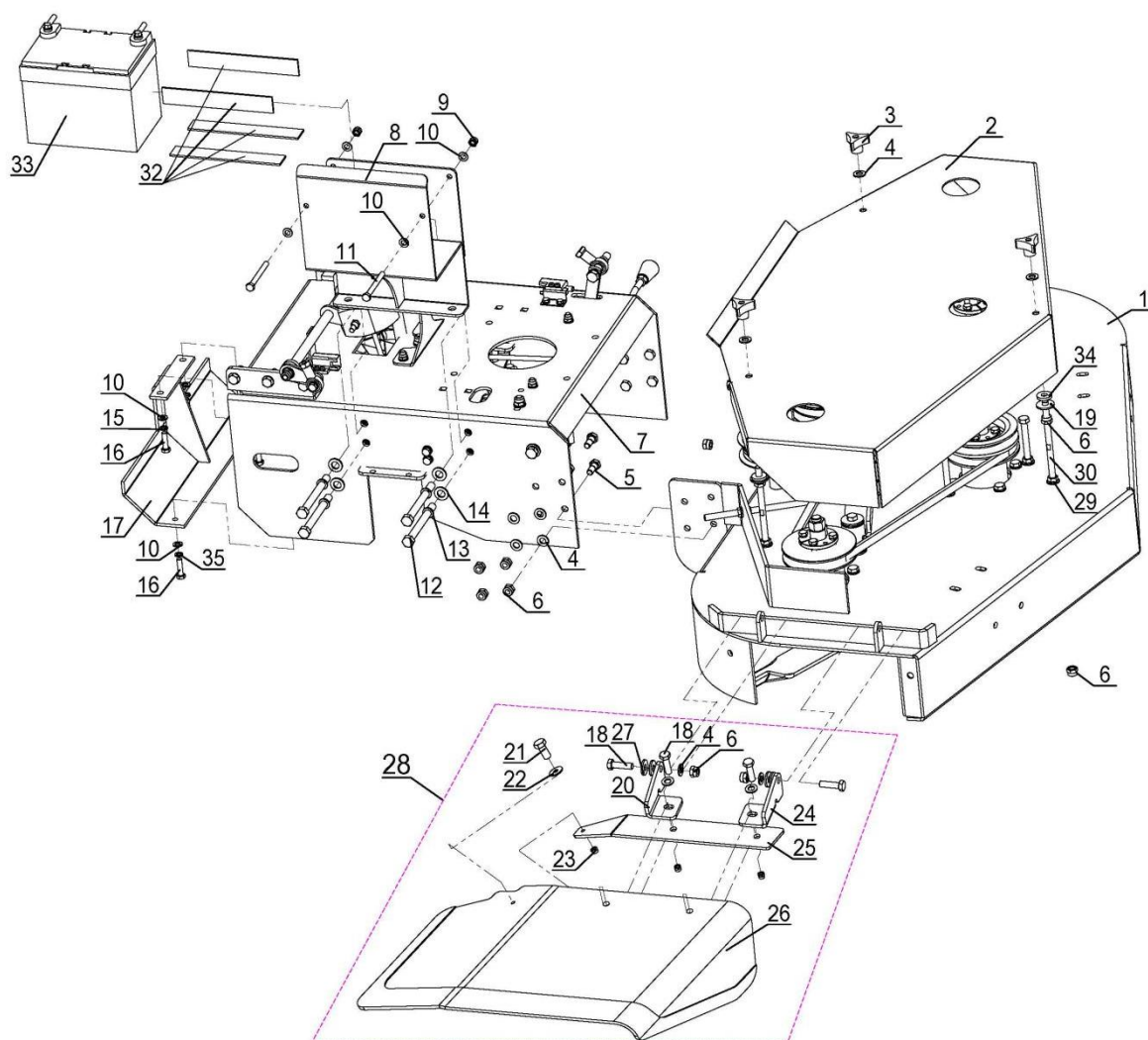
36" Frame Assembly



36" Frame Assembly

Item	Part Number	Description	Qty
1	336-100	Deck Weldment 36"	1
2	336-001	Belt cover 36"	1
3	100-003	Plain Washer 10 GB95	20
4	100-009a	Knob nut	4
5	336-101a	Engine Deck weldment	1
6	336-102a	Battery Box	1
7	200-030	Nylon Nut M8 GB889	2
8	200-021	Plain Washer 8 GB95	8
9	200-321	Bolt M8-1.25×155 GB5782	2
10	200-003	Bolt M10-1.5×25 GB5783	4
11	200-031	Lock washer 10 GB93	8
12	WM2836-080	Battery protection rubber pad	1
13	200-024	Lock Washer 8 GB93	4
14	200-304	Bolt M8-1.25×25 GB5783	4
15	336-105	Hydraulic motor guard	1
16	336-173	Connecting Bolt	8
17	200-006	Nylon Nut M10 GB889	16
18	600-002-1035	Bolt M10-1.5×35 GB5783	4
19	WM2836-071	Battery SP-30R (please purchase from your local Interstate Battery)	1
20	336-249	Left Chute Pivot	1
21	600-002-0625	Bolt M6-1×25 GB5783	1
22	600-302-0006	Plain Washer 6 GB96	1
23	600-201-0006	Nylon Nut M6 GB889	1
24	336-248	Right Chute Pivot	1
25	336-250	Mounting plate	1
26	336-251	Chute Deflector	1
27	601-133	Nylon Washer	4
28	336-252	Rubber chute assembly	1
29	336-265	Negative Battery Cable	1
30	601-222	Black Terminal Protector	1
31	601-223	Red Terminal Protector	1
32	336-241	Positive Battery Cable	1
33	601-021	Solenoid	1
34	WM2836-074	Solenoid Cable I	1

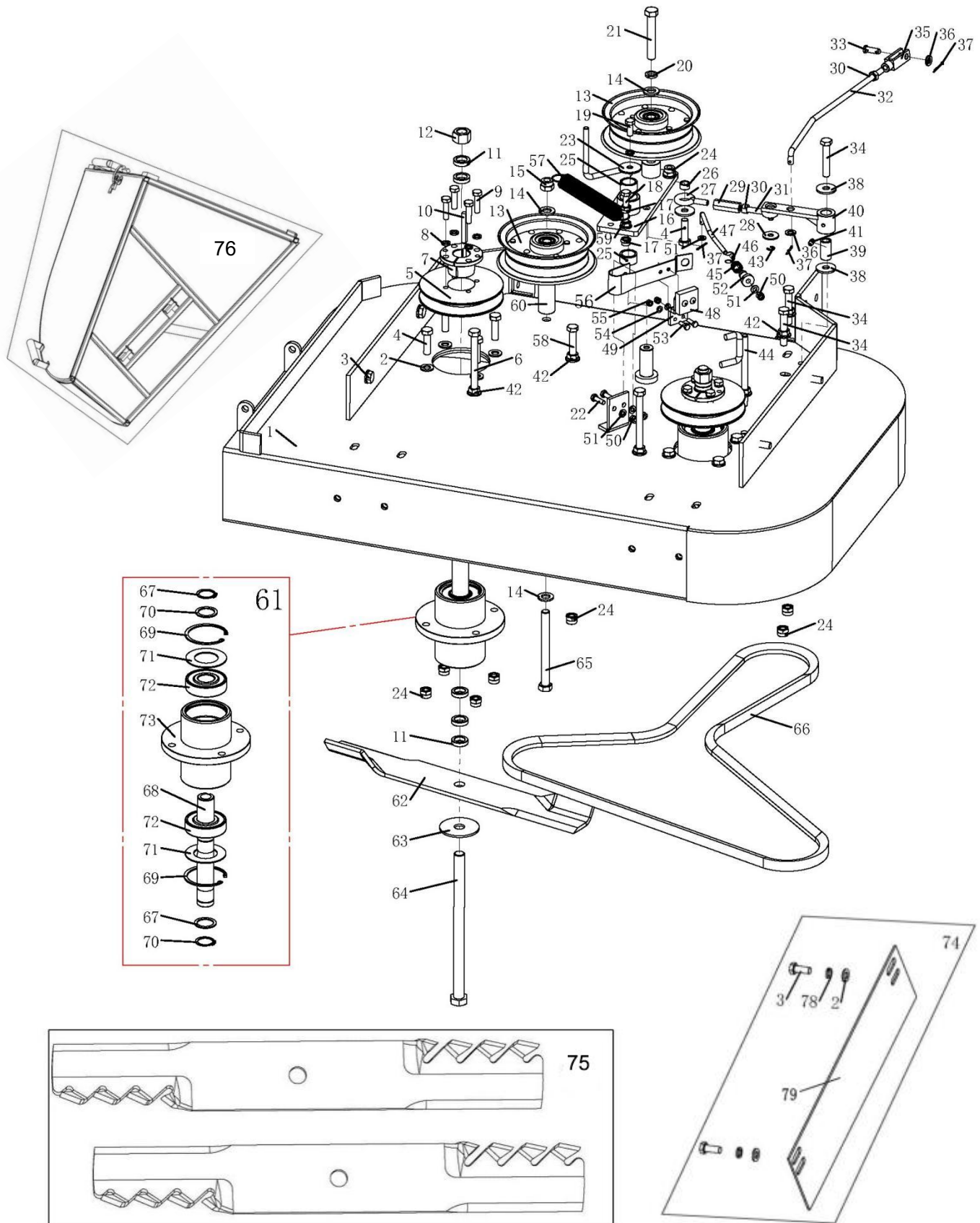
48" & 52" Frame Assembly



48" & 52" Frame Assembly

Item	Part Number	Description	Qty
1	348-100	Deck Weldment 48"	1
	352-100	Deck Weldment 52"	1
2	348-001	Belt cover 48"	1
	352-101	Belt cover 52"	1
3	100-009	Knob	3
4	200-010	Plain Washer 10 GB95	19
5	336-173	Connecting Bolt	8
6	200-006	Nylon Nut M10 GB889	18
7	336-101a	Engine Deck weldment	1
8	336-102a	Battery Box	1
9	200-030	Nylon Nut M8 GB889	2
10	200-021	Plain Washer 8 GB95	8
11	200-321	Bolt M8-1.25×155 GB5782	2
12	200-003	Bolt M10-1.5×25 GB5783	4
13	200-031	Lock washer 10 GB93	4
14	WM2836-071	Battery SP-30R(please purchase from your local Interstate Battery)	1
15	200-024	Lock Washer 8 GB93	4
16	200-304	Bolt M8-1.25×25 GB5783	4
17	336-105	Hydraulic motor guard	1
18	600-002-1035	Bolt M10-1.5×35 GB5783	4
19	200-308	Plain washer 10 GB96	3
20	336-249	Left Chute Pivot	1
21	600-002-0625	Bolt M6-1×25 GB5783	1
22	600-302-0006	Plain Washer 6 GB96	3
23	600-201-0006	Nylon Nut M6 GB889	1
24	336-248	Right Chute Pivot	1
25	336-250	Mounting plate	1
26	601-136	Chute Deflector	1
27	601-133	Nylon Washer	4
28	348-108	Rubber chute assembly	1
29	200-016	Nut Flange M10 GB6187	3
30	348-105	Stud	3
31	348-106	Shock Pad	3
32	WM2836-080	Battery protection rubber pad	1
33	200-018	Bolt M10-1.5×35 GB5783	2
34	348-106	shock pad	3
35	600-305-0008	Lock Washer 8 GB93	2

36" Front Deck Assembly



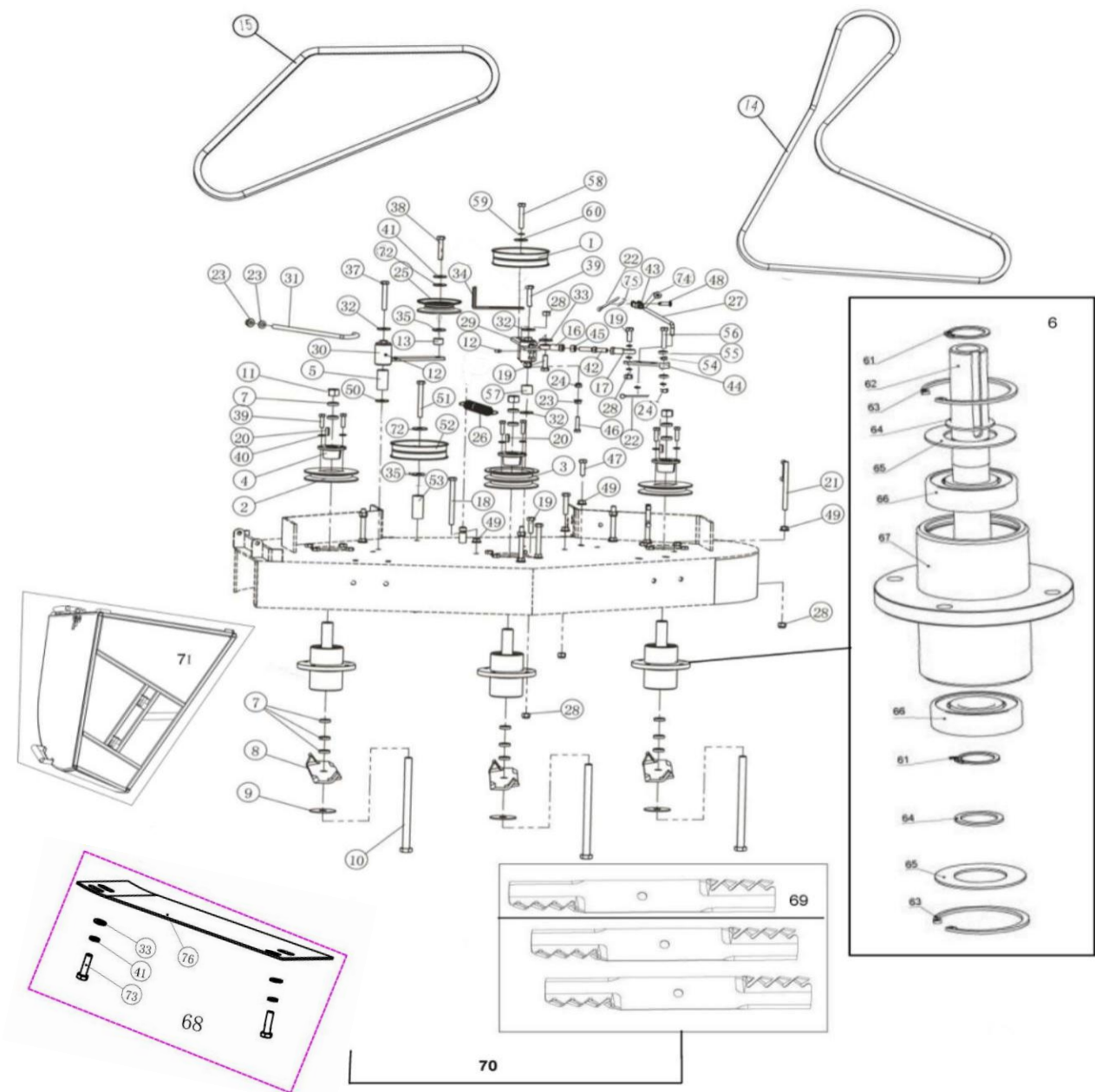
36" Front Deck Assembly

Item	Part Number	Description	Qty
1	336-100	Deck Weldment 36"	1
2	200-010	Plain Washer 10 GB95	25
3	200-003	Bolt M10-1.5×25 GB5783	4
4	200-018	Bolt M10-1.5×35 GB5783	9
5	300-004	Pulley Single	2
6	200-028	Bolt M10-1.5×120 GB5782	2
7	100-026	H-Bushing	2
8	200-024	Lock Washer 8 GB93	8
9	200-025	Bolt M8-1.25×30 GB5783	8
10	100-014	Key 6×6.35×50	2
11	100-022	Spacer 6	10
12	200-017	Hexagon Nut M16×1.5	2
13	300-002a	Idler Pulley	2
14	200-071	Plain washer 12 GB95	3
15	200-007	Nylon Nut M12 GB889	1
16	336-013a	Blade Idler Arm	1
17	200-030	Nylon Nut M8 GB889	2
18	200-085	Bolt M8-1.25×40 GB5783	1
19	200-091	Bolt M8-1.25×20 GB5783	1
20	200-078	Lock washer 12 GB93	1
21	200-306	Bolt M12-1.75×75 GB5782	1
22	200-072	Bolt M6-1×20 GB5783	2
23	336-227	Washer 2.5×9id×34od	1
24	200-006	Nylon Nut M10 GB889	16
25	336-176	Bushing, Straight Pivot	2
26	336-177	Link Bushing 8.5×10.5 id×15 od	1
27	336-012a	Dog Bolt LH	1
28	200-098	Plain washer 8 GB96	1
29	336-178	Screw Pipe	1
30	600-203-0008	Nut M8 GB6170	2
31	336-014a	Dog Bolt RH	1
32	336-010a	Belt tension Release lever	1
33	300-003	Clevis pin 8x24 GB/T882	1
34	200-068	Bolt M10-1.5×55 GB5782	3
35	300-007	Free Bar M8	1
36	200-021	Plain Washer 8 GB95	2
37	200-014	Cotter Pin 2×20 GB91	3
38	200-147	Plain washer 10 GB96	3
39	336-008	Pivot Tube	1
40	336-009	Link Idler Arm	1

36" Front Deck Assembly

41	200-026	Grease Fitting M6 GB1152	2
42	200-016	Nut Flange M10 GB6187	6
43	200-067	Clip Ring 6 GB896	1
44	100-016	Belt Guide, Spindle	1
45	336-017	Spring1	1
46	200-070	Clip Ring 9 GB896	1
47	336-016a	Brake connection Rod for Pulley	1
48	336-019	Brake block	1
49	200-103	Bolt M10-1.5×30 GB5783	1
50	200-009	Nylon Nut M6 GB889	3
51	200-042	Plain Washer 6 GB95	3
52	336-018	Nylon flange Pivot	1
53	200-087	Bolt M5-0.8×16 GB5783	2
54	200-138	Plain washer 5 GB95	2
55	200-013	Nylon Nut M5 GB889	2
56	336-020	Plate spring	1
57	300-006a	Spring	1
58	200-020	Bolt M10-1.5×70 GB5782	1
59	200-029	Nut Flange M8 GB6187	1
60	336-021	Straight Pivot	1
61	100-021	Spindle assembly	2
62	136-003	Blade 36"	2
63	100-023	Plain Washer 3×16.5 id×50 od	2
64	200-023	Bolt M16-1.5×250	2
65	200-309	Bolt M12-1.75×125 GB5783	1
66	336-179	Belt 36"engine to blade	1
67	600-307-0025	Snap ring 25 GB/T 894	4
68	100-021A	Cutter Pivot	2
69	600-306-0062	End ring 62 GB/T 893	4
70	336-253	Plain washer	4
71	336-254	Plain washer	4
72	336-255	Bearing 6305	4
73	336-256	Spindle housing	2
78	200-031	Lock washer 10 GB93	2
optional			
74	500-005	Mulch plate component for 36"	1
75	500-203	Mulching blades for 36"	2
76	GC2000	Grass catcher	1
77	500-002	Mulch kit for 36"	1
79	100c-031	Mulch plate	1

48" & 52" Front Deck Assembly



48" & 52" Front Deck Assembly

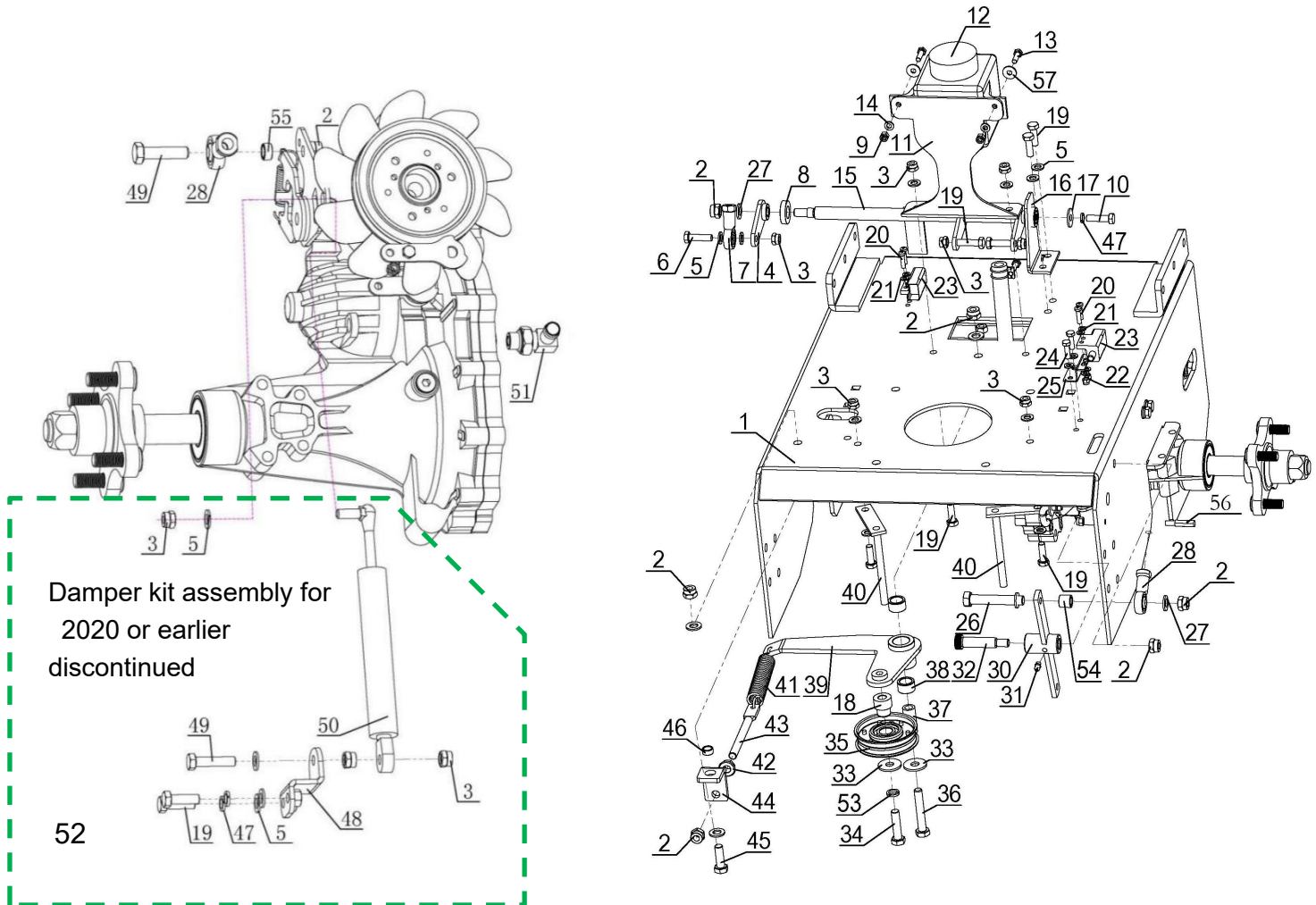
Item	Part Number	Description	Qty
1	300-002	Idler Pulley	1
2	300-004	Pulley,Single	2
3	348-004	Pulley,Double	1
4	100-026	H-Bushing	3
5	100-024	Pivot Hub	1
6	100-021	Spindle assembly	3
7	100-022	Spacer 6	15
8	148-005	Blade 48"	3
	136-003	Blade 36" (for 52")	3
9	100-023	Plain Washer3-16.5id×50od	3
10	200-023	Bolt M16-1.5×250	3
11	200-017	Hexagon Nut M16×1.5	3
12	200-026	Grease Fitting M6 GB1152	2
13	148-011	Spacer 16	1
14	148-006H	Belt 48" Engine to Blade BK83	1
	152-007	Belt 52" Engine to Blade BK85	1
15	148-007H	Belt 48" Blade to Blade B48	1
	152-102	Belt 52" Blade to Blade B50	1
16	100-027	Rod End RH	1
17	100-028	Rod End LH	1
18	200-028	Bolt M10-1.5×120 GB5782	2
19	200-207	Bolt M10-.5×40 GB5783	12
20	100-014	Key 6.35×6×50	3
21	100-016	Belt Guide,Spindle	2
22	200-014	Cotter pin 2×20 GB91	2
23	200-029	Nut Flange M8 GB6187	3
24	200-030	Nylon Nut M8 GB889	2
25	348-005	Idler Pulley IV	1
26	300-006a	Backward Spring	1
27	348-006	Blade Rod (for 48")	1
	348-006a	Blade Rod (for 52")	1
28	200-006	Nylon Nut M10 GB889	23
29	348-103	Blade Idler Arm Weldment	1
30	148-009a	Deck Idler Arm Weldment	1
31	148-010	Rod Belt Tension Hook	1
32	100-019	Plain Washer3×10.5id×38od	2
33	100-003	Plain Washer 10 GB95	17
34	100-033	Belt Guide I	1
35	200-147	Plain washer 10 GB 96	3
37	200-330	Bolt M10-1.5×85 GB5782 (for 48")	1
	200-187	Bolt M10-1.5×80 GB5782 (for 52")	1

48" & 52" Front Deck Assembly

38	200-038	Bolt M10-1.5×60 GB5782	1
39	200-025	Bolt M8-1.25×30 GB5783	12
40	200-024	Lock Washer 8 GB93	9
41	200-031	Lock Washer 10 GB93	3
42	100-030	Turn Buckle Rod (for 52")	1
	100-030a	Turn Buckle Rod (for 48")	1
43	300-007	Free Drawbar	1
44	100-029	Link Idler Arm	1
45	200-027	Nut Thin M10 GB6172	1
46	200-049	Bolt M8-1.25×35 GB5783	2
47	200-032	Bolt M10-1.5×50 GB5782	2
48	300-003	Clevis Pin	1
49	200-016	Nut Flange M10 GB6187	9
50	100-015	Plain Washer 2×26id×38od	2
51	200-008	Bolt M10-1.5×110 GB5782	3
52	348-008	Pulley	1
53	348-009	Pivot Hub	1
54	348-104	Idler Arm sleeve	1
55	200-098	Plain Washer 8 GB96	2
56	200-079	Bolt M8-1.25×50 GB5782	1
57	336-176	Bushing, Straight Pivot	2
58	200-306	Bolt M12-1.75×75 GB5782	1
59	200-078	Lock 12 GB93	1
60	200-071	Plain washer 12 GB95	1
61	600-307-0025	Snap ring 25 GB/T 894	6
62	100-021A	Cutter Pivot	3
63	600-306-0062	End ring 62 GB/T 893	6
64	336-253	Plain washer	6
65	336-254	Plain washer	6
66	336-255	Bearing 6305	6
67	336-256	Spindle housing	3
72	600-302-0010	Plain Washer 10 GB96	3
73	200-003	Bolt M10-1.5×25 GB5783	2
74	200-208	Nut M8 GB6170	1
75	200-021	Plain Washer 8 GB95	2

optional			
68	500-006	Mulch plate component for 48" & 52"	1
69	500-204	Mulching blade for 48"	3
	500-203	Mulching blade for 52"	3
70	500-003	Mulch kit for 48"	1
	500-008	Mulch kit for 52"	1
71	GC2000	Grass catcher	1
76	348-110	Mulch plate	1

36" 48" & 52" Transmission Driver Assembly



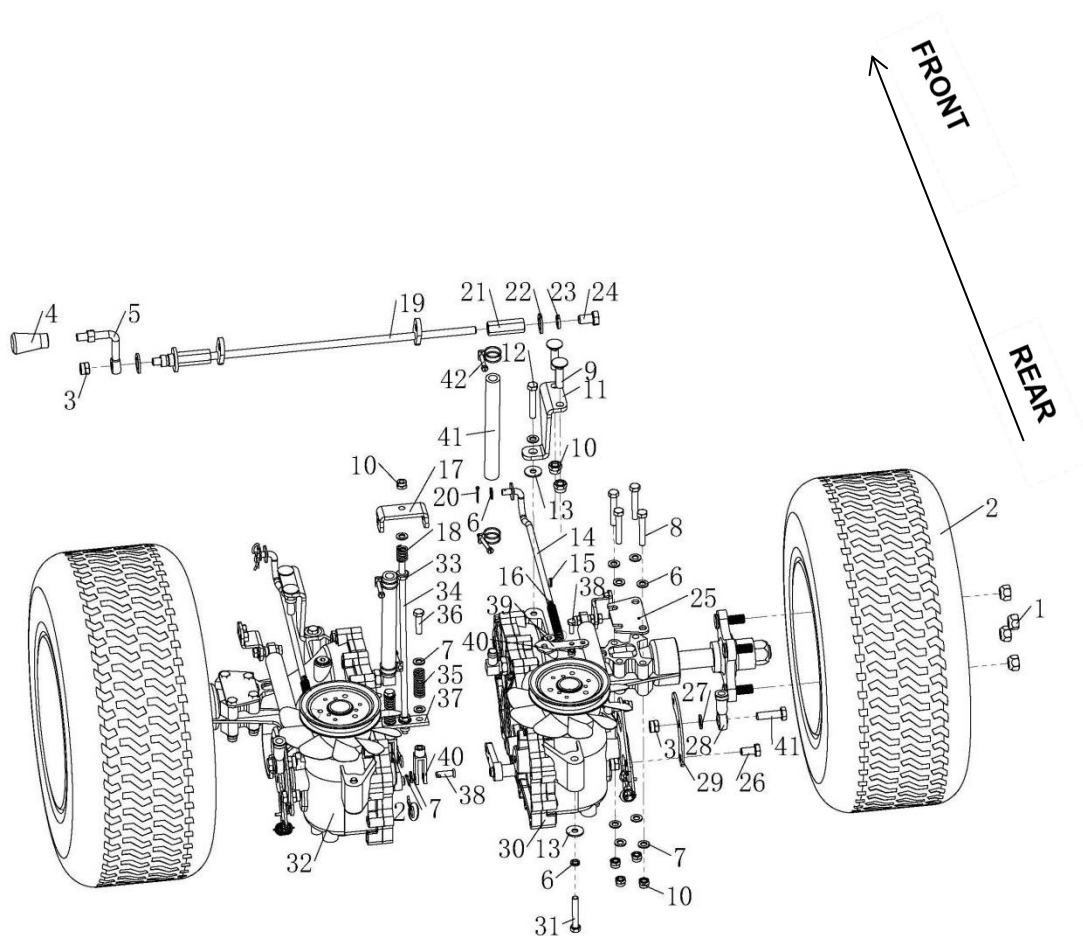
36" 48" & 52" Transmission Driver Assembly

Item	Part Number	Description	Qty
1	336-101a	Rear Deck weldment	1
2	200-006	Nylon Nut M10 GB889	6
3	200-030	Nylon Nut M8 GB889	14
4	336-122a	Parking traction board	1
5	200-021	Plain Washer 8 GB95	12
6	200-025	Bolt M8-1.25×30 GB5783	1
7	300-015B	Rod End RH8	1
8	336-180	Washer 8×16id×30od	1
9	200-009	Nylon Nut M6 GB889	6
10	200-048	Bolt M8-1.25×20 GB5783	5

Bradley Hydro Drive Walk Behind Mower Owner's Manual

11	336-136	Hydraulic oil tank bracket	1
12	336-126	Hydro Reservoir	1
13	200-072	Bolt M6-1×20 GB5783	1
14	200-331	Plain Washer 6 GB95	2
15	336-125b	Parking axis	1
16	336-127	Parking stand I	1
17	200-098	Plain washer 8 GB96	1
18	300-008	Bushing, Flange Pivot I	1
19	200-119	Bolt M8-1.25×25 GB5783	10
20	200-200	Phillips pan head screws M5-0.8×20 GB818	4
21	200-138	Plain Washer 5 GB95	4
22	200-013	Nylon Nut M5 GB889	4
23	601-121	Switch	2
24	200-036	Bolt M6-1×20 GB5783	2
25	336-228	Switch mounting plate	1
26	600-002-1050	Bolt M10-1.5×50 GB5783	1
27	200-010	Plain Washer 10 GB95	7
28	300-015A	Rod End RH10	1
29	200-006	Nylon Nut M10 GB889	1
30	300-054	Blade bell crank	1
31	200-026	Grease Fitting M6 GB1152	1
32	300-051	Shoulder bolt	1
33	200-147	Plain Washer 10 GB96	2
34	200-019	Bolt M10-1.5×40 GB5782	1
35	300-035	Idler pulley 3	1
36	200-038	Bolt M10-1.5×60 GB5782	1
37	300-032	Pivot Hub	1
38	300-033	Bushing, straight pivot	2
39	336-135	Revolved Arm Weldment	1
40	336-133	Belt Guide, Spindle	2
41	100-057	Traction Spring	1
42	200-016	Nut Flange M10 GB6187	3
43	300-037	Rod thread	1
44	336-134	Back Overhang Plate	1
45	200-103	Bolt M10-1.5×30 GB5783	1
46	100-032	Link Bushing 7×10.5 id×14 od	3
47	200-024	Lock Washer 8 GB93	5
48	336-242	Damper mounting plate	2
49	200-049	Bolt M10-1.5×35 GB5783	2
50	336-245	Damper	2
51	336-220a	The pipe joint	2
52	336-281	WT damper kit	1
53	200-031	Lock Washer 10 GB93	1
54	336-238	Tension joint bearing bush	1
55	WM2836-039	Link Bushing 9×10.5 id×14 od	2
56	336-108	Limit Pin	1
57	600-302-0006	Plain Washer 6	2

36" 48" & 52" Brake And Wheel Assembly

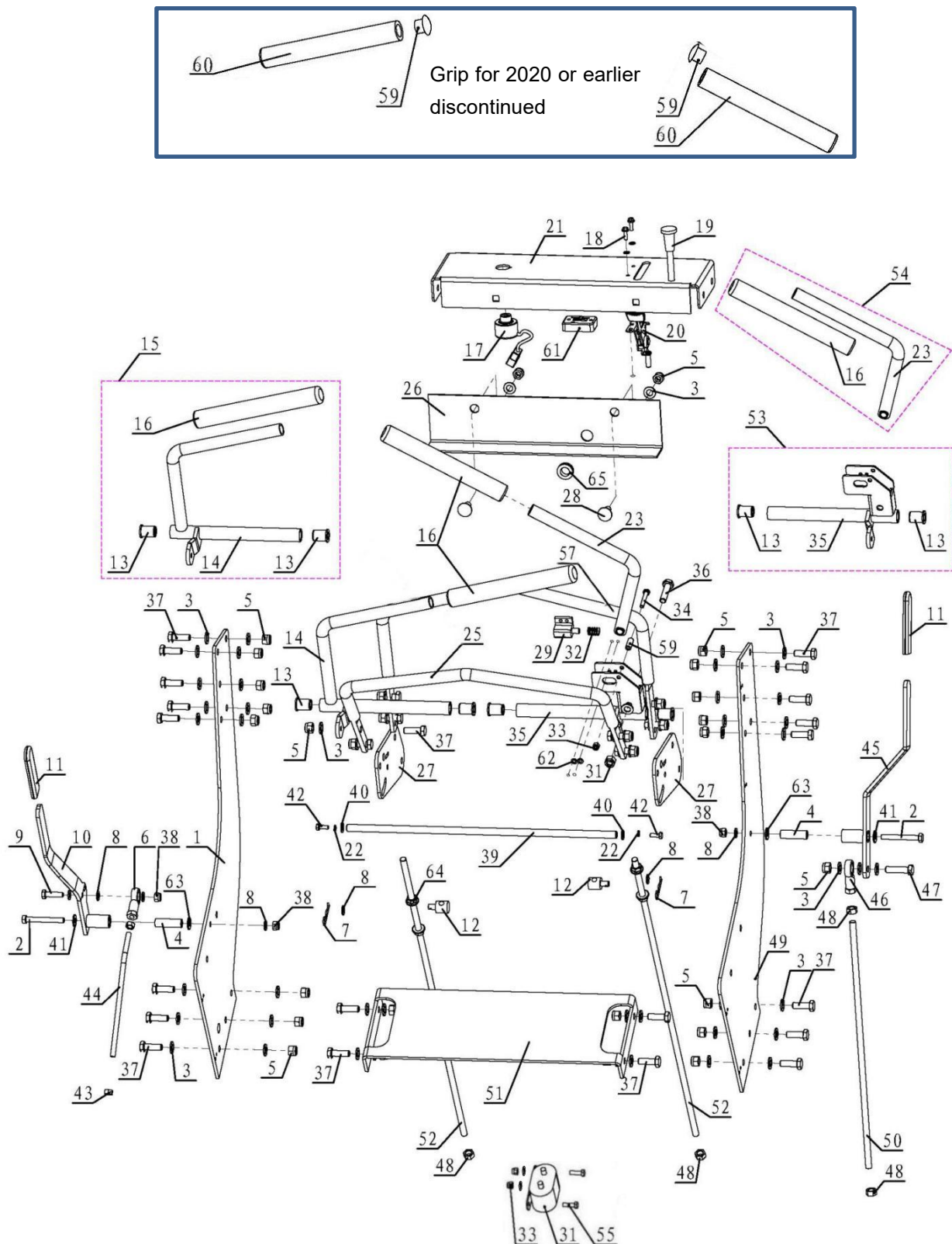


36" 48" & 52" Brake And Wheel Assembly

Item	Part Number	Description	Qty
1	200-076	Nut 1/2-20	8
2	336-106	Tire and Wheel Assembly(for 36")	2
	336-106a	Tire and Wheel Assembly(for 48" & 52")	2
3	200-006	Nylon Nut M10 GB889	7
4	300-024	Shifter Knob	1
5	336-107	Neutral Handle	1
6	200-024	Lock Washer 8 GB93	4
7	200-021	Plain Washer 8 GB95	19
8	200-188	Bolt M8-1.25×75 GB5782	8
9	200-189	Square neck bolt M10-1.5×30 GB801	4
10	200-030	Nylon Nut M8 GB889	16
11	336-109	Transmission support plate	2
12	200-220	Bolt M8-1.25×70 GB5782	2
13	336-239	Plain Washer 3×8.5 id×20 od	12
14	336-110	Right back to the oil lever	2
15	336-111	Flexible cylindrical pin3×14	2
16	300-012	Neutral Spring	2
17	336-181	Gear Parking Plate I	1
18	336-184	Parking Spring I	1
19	336-114	Neutral Lever Weldment	1
20	200-014	Cotter pin 2×20 GB91	4
21	300-009	Tube with Thread	1
22	200-071	Plain Washer 12 GB95	1
23	200-078	Lock Washer 12 GB93	1
24	200-329	Bolt M12-1.75×20 GB5783	1
25	336-223	Adjusting plate	2
26	600-002-0820	Bolt M8-1.25×20 GB5783	1
27	200-075	Bolt M8-1.25×70 GB5782	2
28	336-171	Rod End RH10	1
29	336-117a	Welding Parts right Hydraulic motor control board	1
30	336-116	Right side of the hydraulic motor	1
31	200-075	Bolt M8-1.25×65 GB5782	2
32	336-118	Left side of the hydraulic motor	1
33	300-003	Clevis pin 8×24 GB/T882	2
34	300-007	Free Bar M8	2
35	200-208	Nut M8 GB6170	2
36	336-221	Hydraulic tubing	2

37	336-222	Tubing clamp	4
38	200-120	Hexagon bolt M6-1x16 GB5783	2
39	336-283	Transmission neutral plate	2
40	200-009	Nylon Nut M6 GB889	2
41	600-002-1040	bolt M10-1.5x40 GB5783	2

36" 48" & 52" Handle Control Assembly



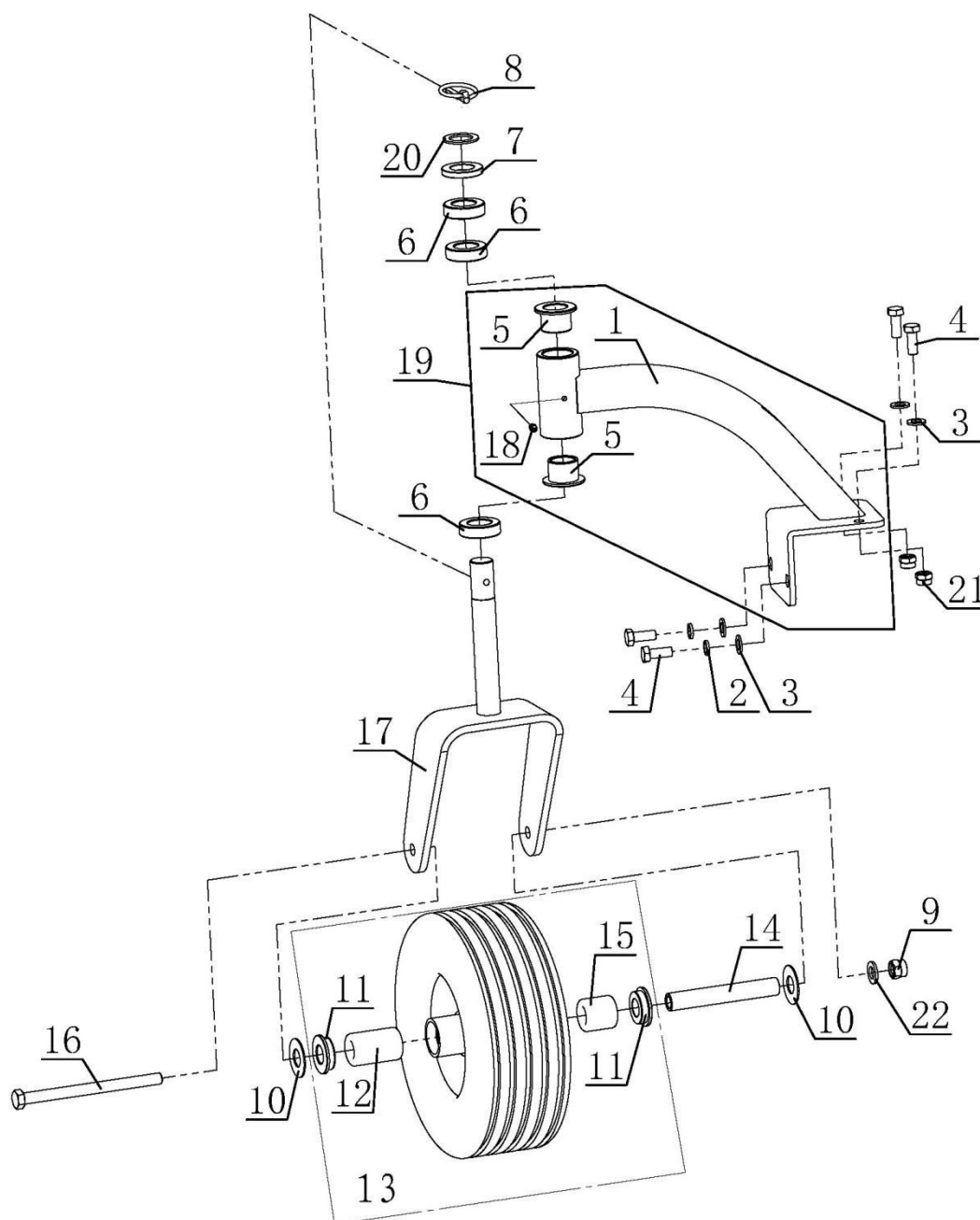
36" 48" & 52" Handle Control Assembly

Item	Part Number	Description	Qty
1	336-200a	The right support board	1
2	200-075	Bolt M8-1.25×65 GB5782	2
3	200-010	Plain Washer 10 GB95	28
4	336-186	Parking lever support sleeve	2
5	200-006	Nylon Nut M10 GB889	28
6	300-015B	Rod End RH8	1
7	200-069a	Hair Pin Cotter	2
8	200-021	Plain Washer 8 GB95	8
9	600-002-0835	Bolt M8-1.25×35 GB5783	1
10	336-120a	Parking Handle	1
11	100-045	Flat Drip	2
12	336-201	Swivel	2
13	336-202	Handrail shaft bushing	4
14	336-203a	Right Control lever	1
15	336-260	The right operating handle components (include #13,14,16)	1
16	601-262	Grip for 2021 upgrade design	2
17	700-137B	Ignition switch	1
18	200-012	Bolt M5-0.8×16 GB818	2
19	336-149	Choke Control	1
20	100-091	Throttle Control	1
21	336-205	Operation panel	1
22	200-053	Lock washer 6 GB93	2
23	336-206	Left Control lever	1
24	200-013	Nylon Nut M5 GB889	4
25	336-207	Handle	1
26	336-208b	Baffle	1
27	336-208a	Panel connection plate	2
28	200-204	Mushroom head square neck bolts M10-1.5×25 GB801	2
29	601-145	Switch	1
30	200-012	Bolt M5-0.8×16 GB818	2
31	336-244	Solenoid	1
32	336-209	Spring	1

36" 48" & 52" Handle Control Assembly

33	600-201-0006	Nylon Nut M6 GB889	2
34	600-001-0645	Bolt M6-1×45 GB5783	1
35	336-210a	The left operating handle weldment	1
36	601-141	Handle Shaft	1
37	200-003	Bolt M10-1.5×30 GB5783	22
38	200-030	Nylon Nut M8 GB889	4
39	336-211a	Handle shaft	1
40	200-325	Plain washer 6 GB96	1
41	200-098	Plain washer 8 GB96	2
42	200-120a	Bolt M6-1×12 GB5783	2
43	200-208	Nut M8 GB6170	2
44	336-119	Parking lever	1
45	336-170a	Pull Handle	1
46	300-015A	Rod End RH10	1
47	200-207	Bolt M10-1.5×40 GB5783	1
48	200-201	Nut M10 GB6170	4
49	336-213c	The left support board	1
50	336-214a	Blade Rod	1
51	336-215	Oil tank supporting plate	1
52	336-216a	Direction control lever	2
53	336-259	The left operating handle components (include #13,35)	1
54	336-261	The left handle components (include#16,23)	1
55	200-202a	Bolt M6-1×16 GB5789	2
56	200-103	Bolt M10-1.5×30 GB5783	4
57	336-207a	Handle	1
58	336-243	Rubber Sheath	1
59	336-231	Rotary rubber plug for 2020 or earlier discontinued	2
60	700-098	Grip for 2020 or earlier discontinued	2
61	N110-0100-0071	Hour Meter	1
62	600-301-0005	Plain Washer 5	2
63	336-187	Washer 2x8idx20od	2
64	200-016	Nut Flange M10 GB6187	4
65	601-078	Rubber Bushing	1
66	336-207	Handle	1

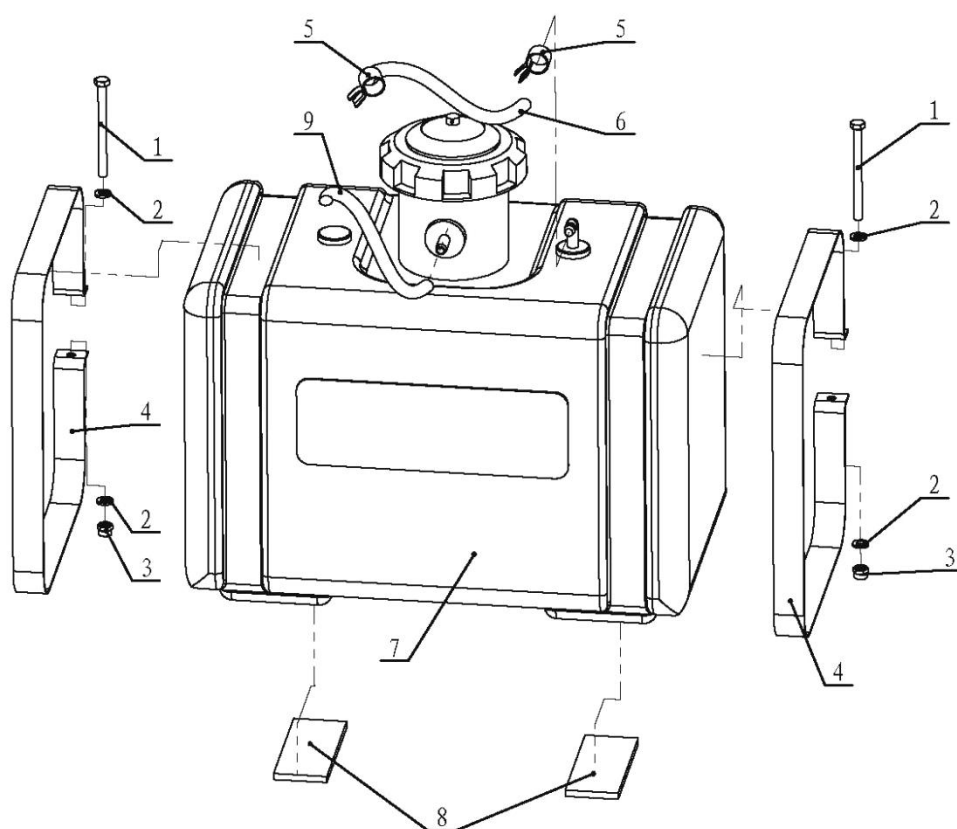
36" 48" & 52" Front Caster Assembly



36" 48" & 52" Front Caster Assembly

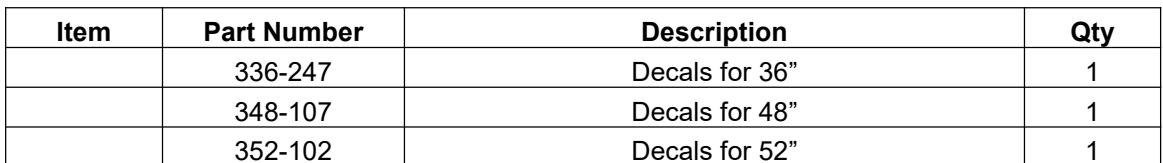
Item	Part Number	Description	Qty
1	336-138	Castor Support	2
2	200-031	Lock Washer 10	2
3	100-003	Plain Washer 10 GB95	8
4	200-003	Bolt M10-1.5×25 GB5783	8
5	100-100	Bushing, Castor	4
6	100-098	Spacer 13	6
7	100-099	Spacer 6.5	2
8	100-097	Lynch Pin	2
9	200-007	Nylon Nut M12 GB889	2
10	336-139	Adjustable washer	4
11	700-158	Front Wheel Washer	4
12	336-141	Needle roller bearings (long)	2
13	700-156	Tire 11×4-5	2
14	N15028	Pivot Tube,Castor	2
15	336-142	Needle roller bearings (short)	2
16	200-133	Bolt M12-1.75×160 GB5782	2
17	336-140	Castor Yoke	2
18	200-026	Grease Fitting M6 GB1152	2
19	336-257	Left Castor Support Assembly (include#1,5,18)	1
	336-258	Right Castor Support Assembly (include#1,5,18)	1
20	336-236	Adjusting spacer	2
21	200-006	Nylon nut M10 GB889	4
22	200-071	Plain washer 12 GB95	2
optional			
13	700-156FF	Flat free tire assembly	2

36" 48" & 52" Fuel Tank Assembly



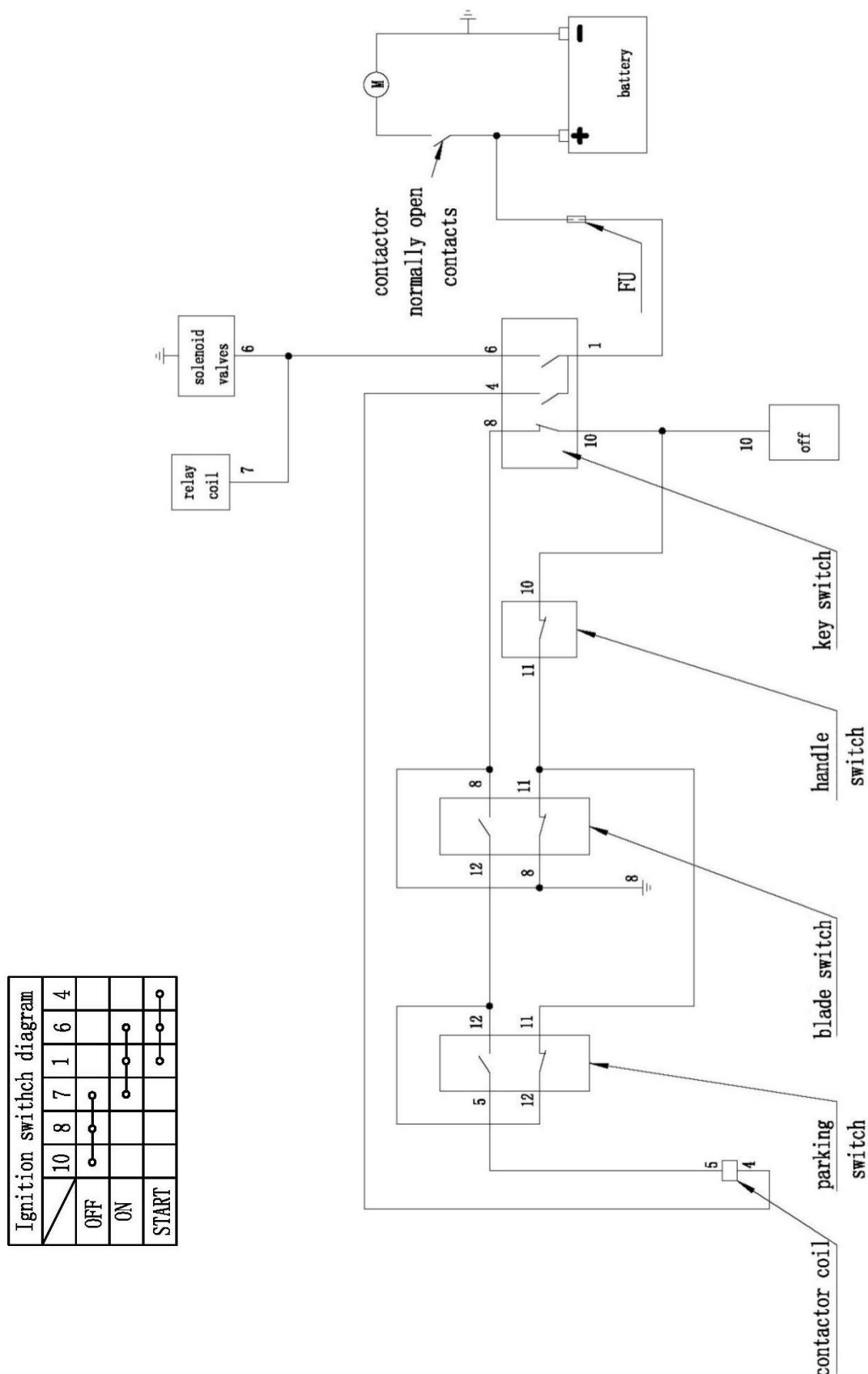
Item	Part Number	Description	Qty
1	200-339	Bolt M6-1×70 GB5782	2
2	200-301	Washer 6 GB95	4
3	200-009	Nut M6 GB889	2
4	336-143	Fuel tank strap	2
5	200-059	Gasoline tubing clamp	2
6	100-106	Gasoline pipe	1
7	WM2836-089	Fuel tank	1
8	100-107	Tank pad	2
9	336-234	Air tube	1

The following labels are intended to alert you to potential hazards and to provide you with important safety information. Should these decals become difficult to read or are missing from the mower, contact your Bradley dealer for a replacement.



36" 48" & 52" Electrical Diagram

Item	Part Number	Description	Qty
	336-262	Wire Harness	1



Note:

1. The wiring diagram is for Briggs & Stratton , Kawasaki engine
2. For use only in WT & SOT mower

This page intentionally left blank.



BRADLEY MOWERS PRODUCT REGISTRATION

CUSTOMER INFORMATION

Name: _____

Business Name: _____

Address: _____

City: _____ State: _____ Zip: _____

Phone Number: _____ Fax Number: _____

Email Address: _____

DEALER INFORMATION(place of purchase) *required

Dealer's Name: _____

Dealer's Address: _____

City: _____ State: _____ Zip: _____

Phone Number: _____

(The remaining dealer information will help you get warranty service faster should you need it.)

PRODUCT INFORMATION

Product Name and Model Number: _____

Serial Number: _____

Engine/Motor Brand and Size: _____

Engine Serial Number: _____

Engines hydraulic pumps, and batteries are warranted through their respective manufacturers. Please contact the manufacturer for more details.

Signature _____ Date of Purchase: _____

KEEP YOUR RECEIPT WITH A COPY OF THIS REGISTRATION FORM

Mail your completed form to:
Havener Enterprises, Inc.
368 S. Michigan Ave.
Bradley, IL 60915

Email your completed form to:
info@bradleymowers.com
Complete your registration form online at www.bradleymowers.com

Fax your completed form to:
888.785.1348

Warranties should be performed by an authorized Bradley Mowers dealer. All other warranty service requires prior approval.

Your product warranty is only valid if this file is completed signed, and returned to Havener Enterprises, Inc. within two weeks of product purchase. See the warranty statement for more details.

Your information may be collected but never shared outside of Havener Enterprises, Inc. and its subsidiaries