



**Results of the 2010 Off-Reservation
Waawaashkeshi (Deer)
Omashkooz (Elk)
and Makwa (Bear)
Harvest in the
Ceded Territories of Michigan**

by
Miles Falck
Wildlife Biologist

Administrative Report 11-04
March 2011

Great Lakes Indian Fish & Wildlife Commission
Biological Services Division
P.O. Box 9
Odanah, WI 54861
(715) 682-6619

Results of the 2010 Off-Reservation Waawaashkeshi (Deer) Omashkooz (Elk) and Makwa (Bear) Harvest in the Ceded Territories of Michigan

INTRODUCTION

This report summarizes the 2010 off-reservation harvest of waawaashkeshi (deer), omashkooz (elk) and makwa (bear) in Michigan by GLIFWC-member tribes who retain hunting, fishing and gathering rights on these lands in the treaties of 1836 and 1842 (Fig. 1). Successful tribal hunters included members from the Bad River Band, Bay Mills Indian Community (BMIC), Keweenaw Bay Indian Community (KBIC), Lac Vieux Desert Band (LVD), and the Sokaogon Chippewa Community (Fig. 1).

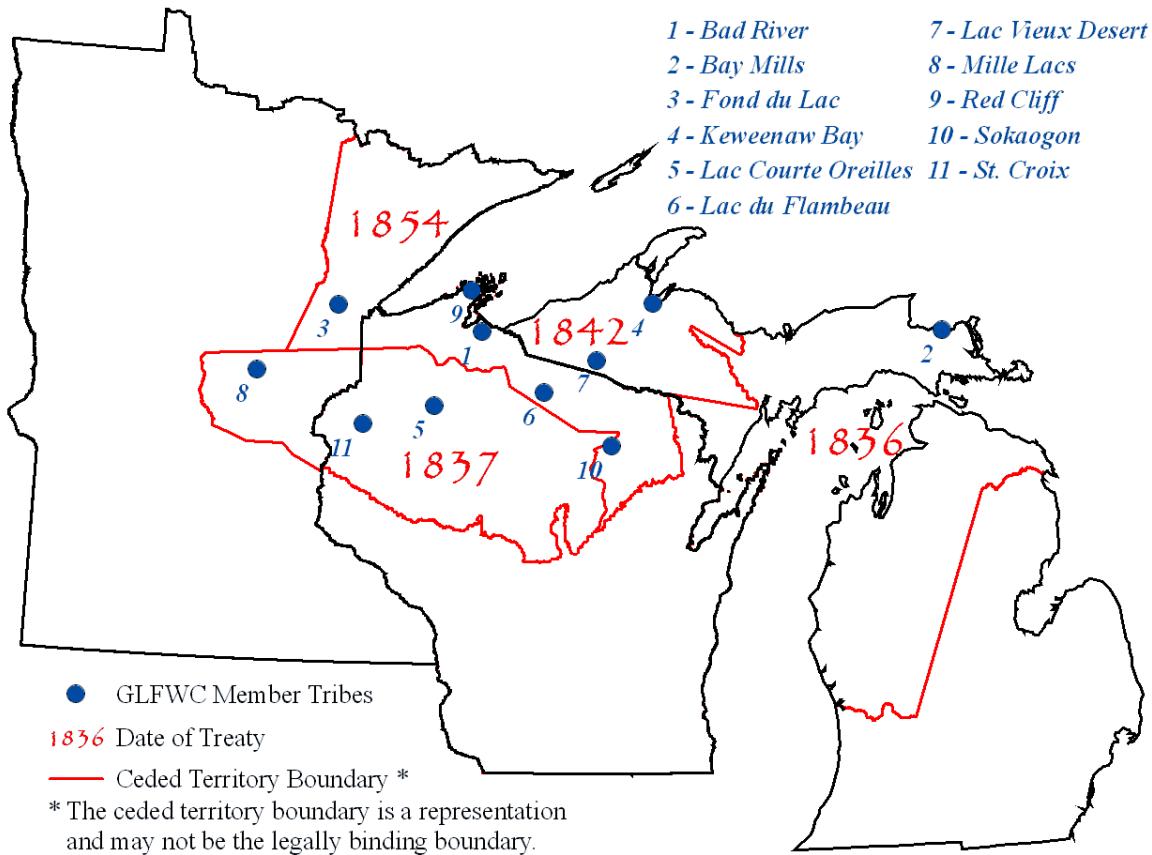


Figure 1. Ceded territory and location of GLIFWC-member tribes.

DEER HUNTING

Methods

1836 Ceded Territory. In 2010, 220 harvest permits were issued to BMIC tribal hunters. Hunters were initially issued two carcass tags each unless additional tags were requested in writing. Harvest information was collected (month and county of harvest, antlered or antler-less) from hunters who filled their first two tags before additional tags were issued. At the end of the season all hunters who had been issued tags were contacted and harvest information was collected by the BMIC Conservation Enforcement Department.

1842 Ceded Territory. Harvest data for the 1842 ceded territory in the UP were obtained from tribal registration stations where information was collected on each deer registered. Information included county and date of harvest, and type of deer (antlered or antlerless).

Results

The total off-reservation tribal deer harvest for GLIFWC-member tribes in Michigan was 177 deer (63% antlerless) (Table 1). A total of 61 deer (66% antlerless) were registered in the 1842 ceded territory in Michigan and reported harvest for the 1836 ceded territory in Michigan was 116 deer (62% antlerless). Figure 2 illustrates the distribution of deer harvested in the ceded territories of Michigan by county in 2010.

Table 1. Summary of 2010 off-reservation deer harvest in Michigan by GLIFWC-member tribes.

Treaty Area of Harvest	Registration Station	Antlered	Antlerless	Unknown	Total
1836	N/A	44	72	0	116
1842	Bad River	0	23	2	25
	Keweenaw Bay	16	11	0	27
	Lac Vieux Desert	2	3	0	5
	Red Cliff	0	3	0	3
	Sokaogon	1	0	0	1
Total		63	112	2	177

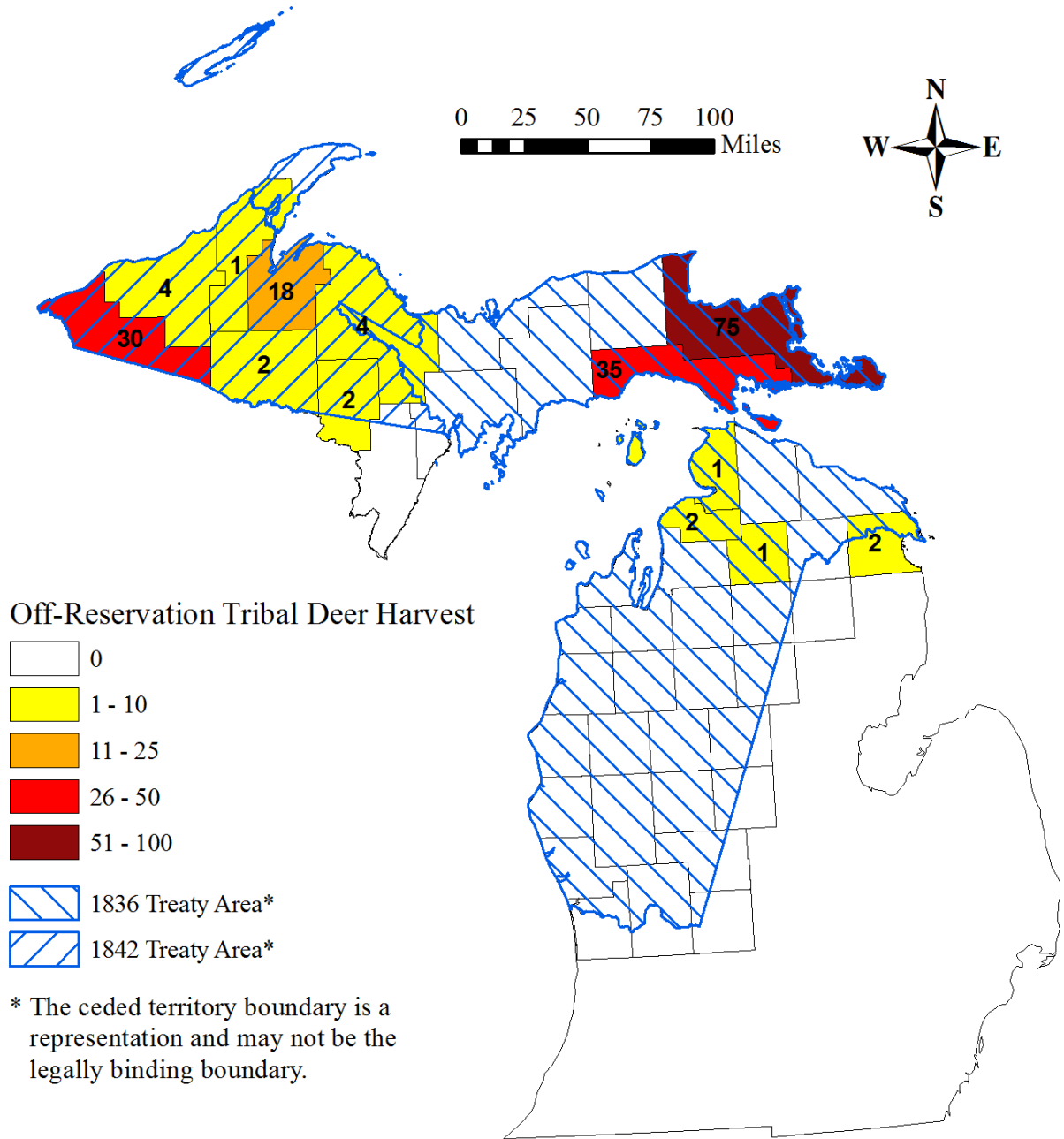


Figure 2. Distribution of off-reservation deer harvest in Michigan counties by GLIFWC-member tribes, 2010.

ELK HUNTING

Methods

1836 Ceded Territory. The Bay Mills Indian Community issued seven elk permits to tribal hunters. Four of those were cow tags and three were hunter choice. All animals were checked in at Michigan DNR check stations for disease testing and a tooth was taken for aging.

Results

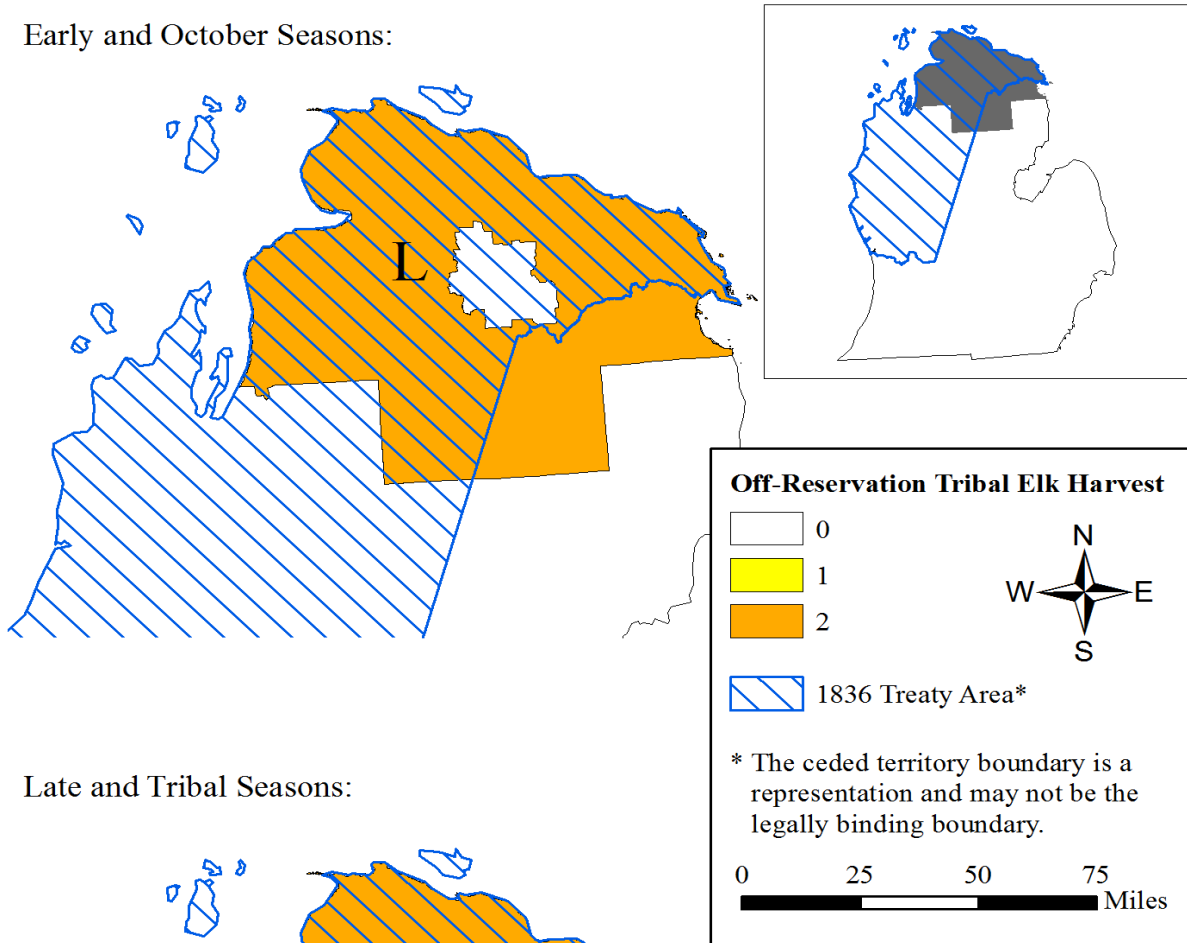
A total of seven elk were harvested off-reservation in the 1836 ceded territory of Michigan by members of the Bay Mills Indian Community during the 2010 elk season (Table 2). Figure 3 illustrates the distribution of elk harvested in the 1836 ceded territory of Michigan in 2010.

Table 2. Summary of 2010 off-reservation elk harvest in Michigan by BMIC members.

Season	Unit	Cow	Bull	Total
Early: 8/31-9/3; 9/24-9/27	L	0	1	1
October: 10/16-10/20	L	1	0	1
Late: 12/4-12/12	F	0	1	1
Tribal: 12/13-12/28	B	2	0	2
	X	1	1	2
Total		4	3	7

2010 Elk Management Units

Early and October Seasons:



Late and Tribal Seasons:

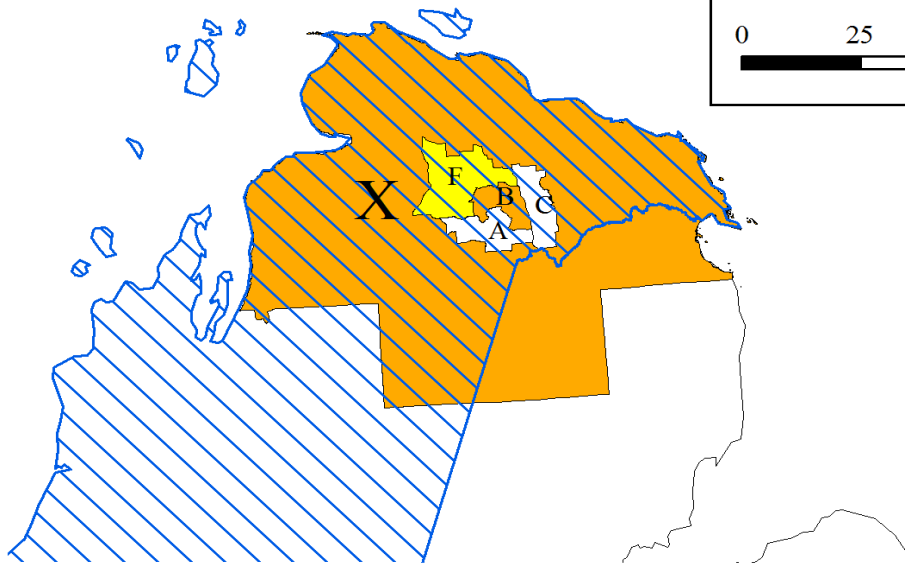


Figure 3. Distribution of off-reservation elk harvest by BMIC members, 2010.

BEAR HUNTING

Methods

1836 Ceded Territory. A total of 19 permits were issued in 2010 for bear, however only 6 were issued to active bear hunters, the remaining permits were issued for incidental harvest during the deer hunt. Because participation in the bear hunt is limited among Bay Mills Indian Community members, a targeted survey of the active bear hunters was conducted by the BMIC Conservation Enforcement Department to determine the level of harvest.

1842 Ceded Territory. Harvest data for the 1842 portion of the UP were obtained from tribal registration stations where information was collected on each bear registered. Information included sex, county, and date of harvest.

Results

A total of four bear were harvested off-reservation in Michigan by GLIFWC-member tribes during 2010 (Table 3). Two bear were harvested in the 1842 ceded territory and two were harvested in the 1836 ceded territory. Figure 4 illustrates the distribution of bear harvested in the ceded territories of Michigan by county in 2010.

Table 3. Summary of 2010 off-reservation tribal bear harvest in Michigan.

Treaty Area of Harvest	Boar	Sow	Total
1836	1	1	2
1842	0	2	2
Total	1	3	4

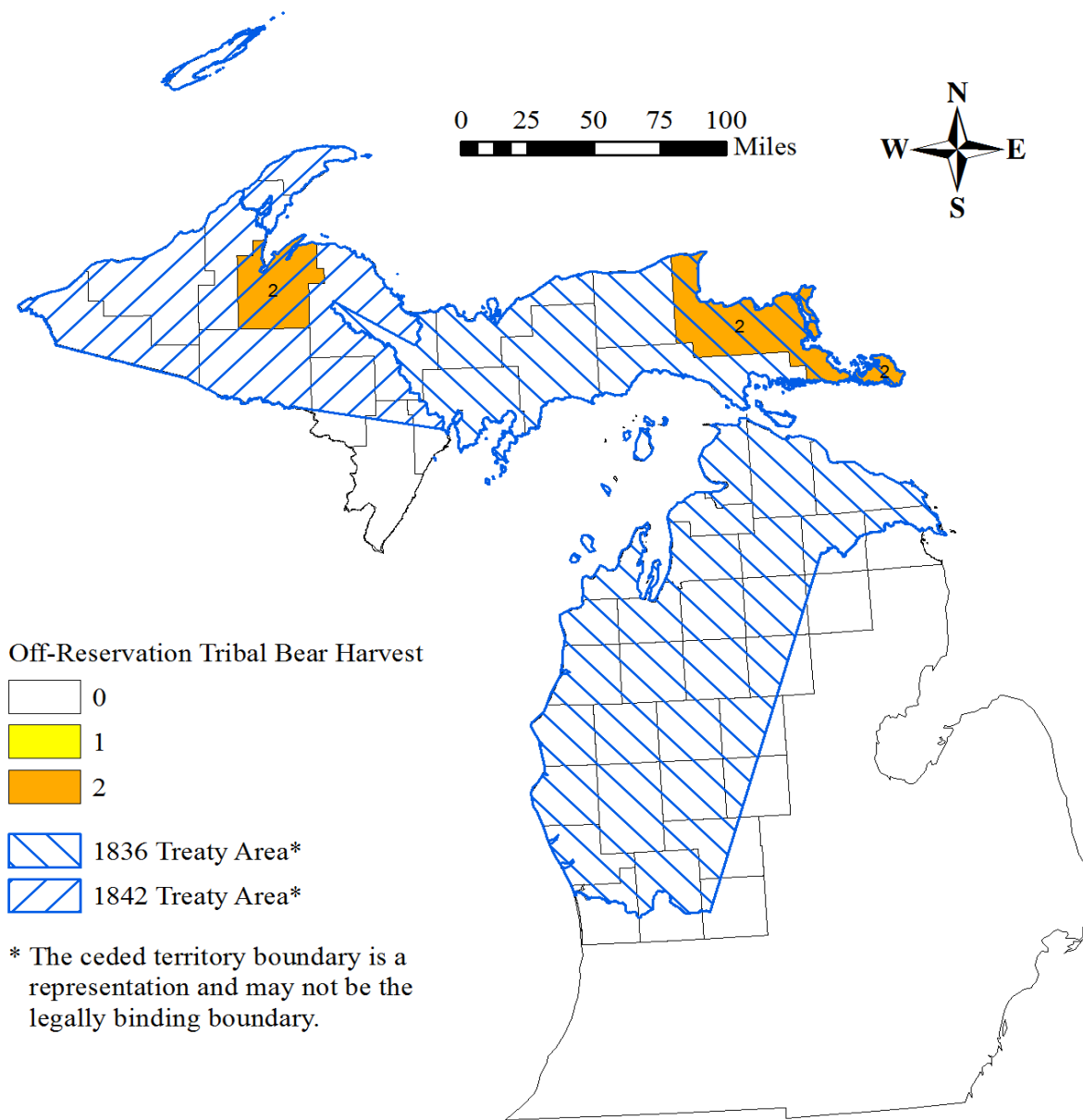


Figure 4. Distribution of off-reservation bear harvest in Michigan counties by GLIFWC-member tribes, 2010.