

1947 DESOTO

9-PASSENGER SUBURBAN

DeSoto Division, Chrysler Corporation - Detroit, MI

ENGINE.....	6 Cylinder	HORSEPOWER.....	109 hp
WEIGHT.....	4,012 lbs	WHEELBASE.....	139.5"
PRODUCTION.....	7,500 (1946 -49)	FACTORY PRICE.....	\$2,214.00

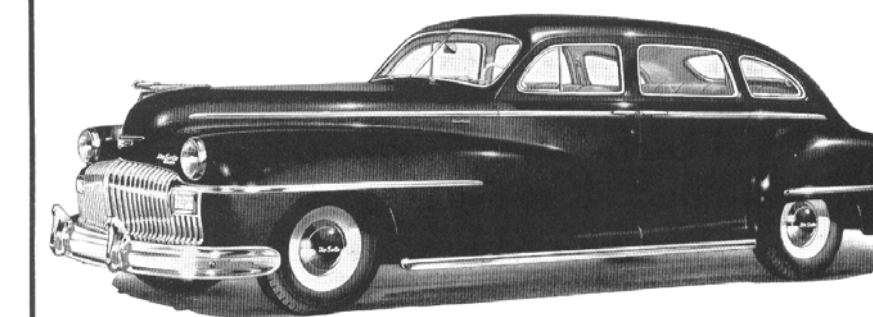


Donated to the
GILMORE CAR MUSEUM
by Bill Johnston and Ron Elenbaas,
Hickory Corners, MI

The Original Mini Van

Due to the outbreak of WWII, all U.S. automobile production stopped in February of 1942 and car manufacturers shifted to building items for the war effort. Domestic car production didn't resume until March of 1946 with cars that appeared little changed from the 1941 – 1942 models. A surprise newcomer to the field was the eight-passenger DeSoto Suburban, which arrived in November of 1946 and was produced unchanged through mid-1949. It was designed as the ultimate in stylish transportation for hotels, airports, and large families. Its unique folding seats allowed for several combinations of passengers and cargo, much like present-day mini vans.

A DeSoto Suburban like the one displayed here was featured in the 1970s sitcom “Happy Days” as the Cunningham family car.



Quality
MAKES ITSELF HEARD

The overwhelming majority of new DeSoto owners, in a nationwide poll, declared that “DeSoto is the best car I ever owned, regardless of price!” This tremendous response to quality, voiced by thousands, points to a promising future for every DeSoto-Plymouth Dealer.

DESOTO

LETS YOU DRIVE WITHOUT SHIFTING

TUNE IN “CHRISTOPHER WELLS”—THE DE SOTO-PLYMOUTH DEALER PROGRAM—SUNDAY NIGHTS ON ALL CBS STATIONS STARTING SEPT. 28