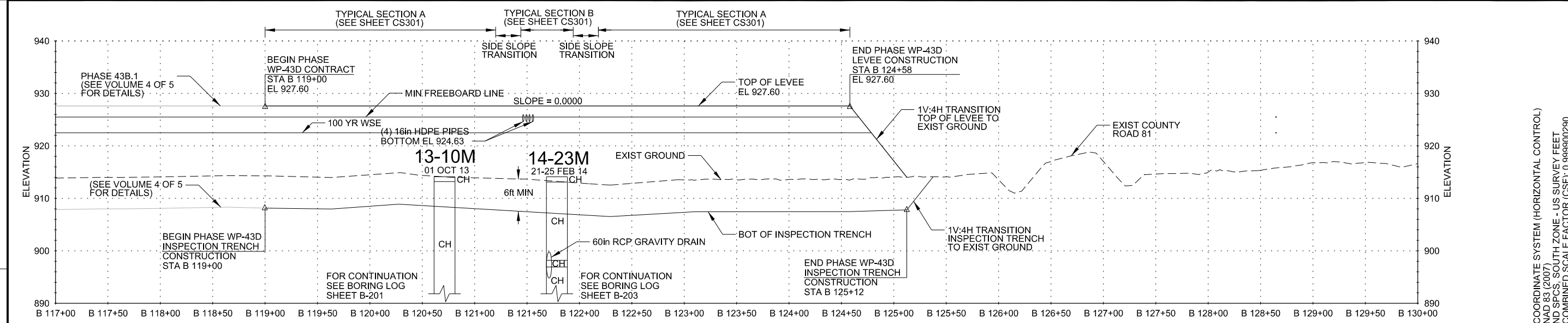
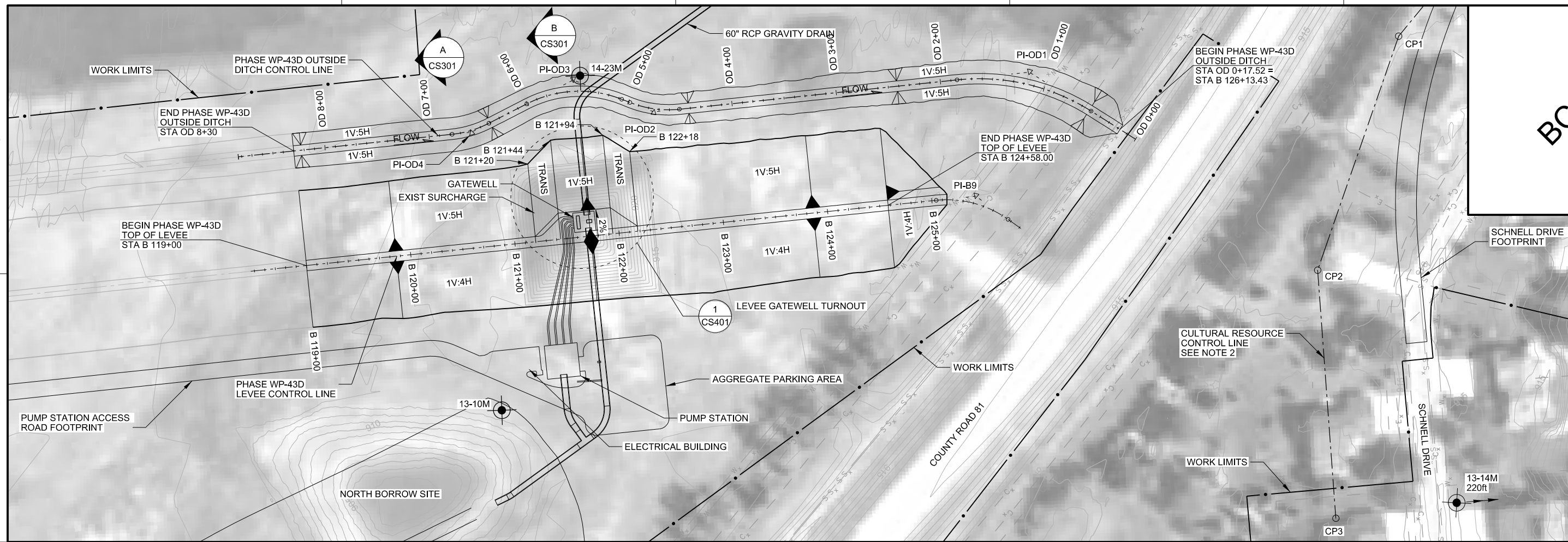


UNPROJECTS\170351\04_Levee_Ring_WP-43D\30000 - Planning & Engineering & Design\30040 - Engineering & Design\CAD_BIM_Sheets\CAD\BIM_Sheets\CAD\BIM_Sheets\FMM43D_CS101.dgn
 9/23/2016 11:18:53 AM



REFERENCES:

STORM WATER OUTLET PLAN	CJ101
GRADING - MAINTENANCE ROAD AND PARKING AREA	CJ401
PLAN AND PROFILE - SCHNELL DRIVE	CP107, CP108
PLAN AND PROFILE - PUMP STATION ACCESS ROAD	CP111
PROFILE - OUTSIDE DITCH	CS201
TYPICAL SECTIONS	CS301
DETAIL PLAN - LEVEE GATE WELL TURNOUT	CS401

SHEET ID:

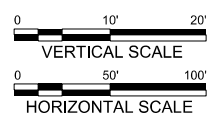
DETAILS	CS501
CONTROL LINE DATA	CS601
PUMP STATION PLANS	SJ101
GATE WELL PLANS	SK101

REFERENCES:

DETAILS	CS501
CONTROL LINE DATA	CS601
PUMP STATION PLANS	SJ101
GATE WELL PLANS	SK101

PLAN AND PROFILE VIEW

WP-43D LEVEE STA B 119+00 - B 124+58



NOTES:

1. THE ELEVATION SHOWN ON THE PROFILE IS AT THE LEVEE CONTROL LINE.
2. ALL EARTH MOVING CONSTRUCTION DONE RIVERWARD OF THIS LINE SHALL BE MONITORED BY A QUALIFIED PROFESSIONAL ARCHAEOLOGIST.
3. FULL DEPTH INSPECTION TRENCH EXCAVATION SHALL BEGIN AT STA B 118+47 AND END AT STA B 125+94.
4. EXISTING UTILITIES ARE SHOWN IN PLAN VIEW ONLY AS A REFERENCE. REFER TO REMOVAL SHEETS FOR EXISTING UTILITIES TO BE REMOVED UNDER THIS CONTRACT.



COORDINATE SYSTEM (HORIZONTAL CONTROL)
 NAD 83 (2007)
 ND SPCS SOUTH ZONE - US SURVEY FEET
 COMBINED SCALE FACTOR (CSF): 0.999900290

ELEVATION DATUM (VERTICAL CONTROL)
 NAVD 88
 GEOID09

BCOE

HMG
HOUSTON - MOORE GROUP

OXBOW - HICKSON - BAKKE RING LEVEE - PHASE D
WORK PACKAGE 43D
CASS COUNTY, NORTH DAKOTA
LEVEE - PLAN AND PROFILE - STA B 119+00 - B 124+58

DATE:	06/22/2016
REVISED:	
REVISOR:	
RECORD:	
FILE NAME:	FMM43D_CS101.dgn
PROJECT No.:	1014-230
DRAWN BY:	JDE
CHECKED BY:	CMG
PROJ. MANAGER:	CMG
PROJ. DESIGNER:	MV

CS101