

Project:

Type:

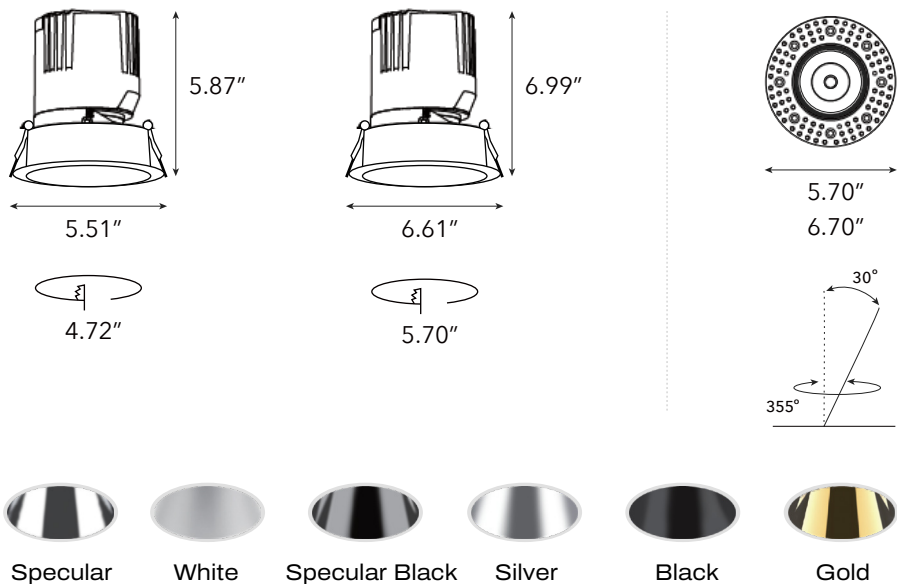
Qty:



FEATURES

- Modular design, field replaceable LED module, trim, beam lens, and accessories
- Interchangeable secondary reflector options for glare control and maximum visual comfort.
- Quiet ceiling achieved through deep regress.
- Precise light control, 10°/ 15°/ 24°/ 38°/ 55° TIR lens beam options.
- Offered standard with flicker free dimming to 1% and fade-to-off dimming (.1%), option available.

SPECIFICATIONS



Input Voltage	100-277V AC
Wattage	30W, 35W, 50W, 55W
Delivered Lumens	2550-4675Lm +/-5%
LED	<3-Step MacAdam Ellipse (2-Step Available)
CCT	27K, 30K, 35K, 40K, D2W, TW
CRI	>90Ra
Beam Angle	TIR Lens 10°/ 15°/ 24°/ 36°/ 55°
Adjustability	Max Tilt Angle 30° / Horizontal Rotation Angle 355°
Dimming	Trimode Dimming / Triac / 0-10V (100%-1%)
Lamp Life	50,000Hr
Environment	IP20 & IP44
Operating Temp	-4° F - 104° F

Order Code

ORDER CODE EXAMPLE: Go2LX-5"RoundDownlight-5RTF-40W--38D-SBW-SF-D10-NC

SERIES	SIZE	TRIM	WATTAGE	CCT	BEAM ANGLE	FINISH
Go2LX	5" Round Downlight 6" Round Downlight	5RT Round Trimmed	F Fixed	30W 2460Lm	27K 2700K	10D 10°
		5RL Round Trimless	A Adjustable	35W 2870Lm	30K 3000K	15D 15°
		6RT Round Trimmed	W Wall Wash	50W 4100Lm	35K 3500K	24D 24°
		6RL Round Trimless		55W 4510Lm	40K 4000K	38D 38°
					TW Tunable White 2700K-6500K	55D 55°
					WD Warm Dim 3000K-1800K	
						SP Specular
						WH White
						SB Specular Black
						SL Silver
						BK Black
						GD Gold

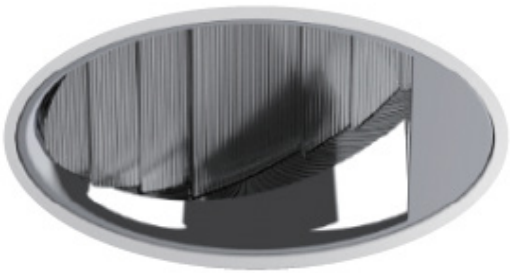
OPTICAL ACCESSORIES	ENVIRONMENT	DIMMING	INSTALLATION TYPE	EMERGENCY BACKUP
SF Softening Lens HL Honeycomb Louver SO Solite Lens LS Linear Spread Lens	— Leave blank if "dry o damp location (IP44)" WET for exterior wet locations (under covered ceiling only)	ELV ELV/TRIAC Phase Cutting 3% D10 0/1-10V(100%-1%) DAL DALI-2 Dim to off 0.1%	NC New Construction IC Insulation Contact AT/CP Airtight WC Wood ceiling	EM4 4 watts / 90 mins EM10 10 watts / 90 mins

Project:

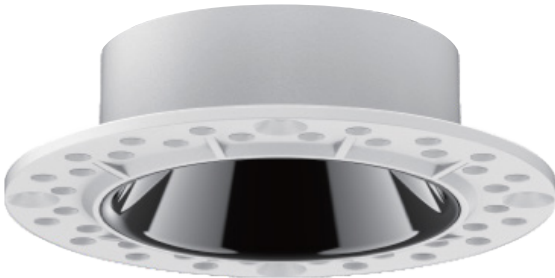
Type:

Qty:

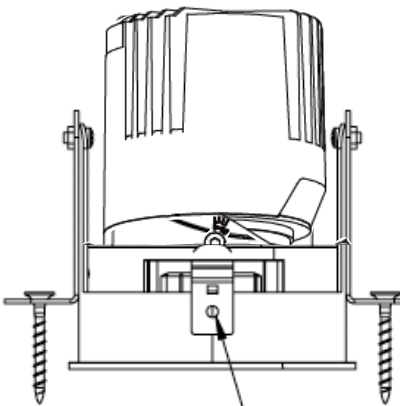
ADDITIONAL VIEWS



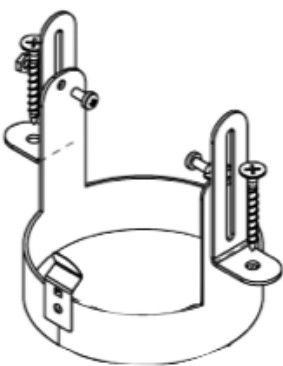
Polarized Wall Washer



Trimless



Wood Ceiling Adapter



Adjustable

OPTICAL LENS



Softening  
(frosted filter)



Honeycomb



Linear Spread



Solite

LIGHT LOSS FACTOR	
Honeycomb Louver	0.55
Solite Filter	0.70
Frosted Filter	0.70
Linear Spread Filter	0.70

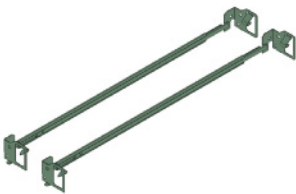
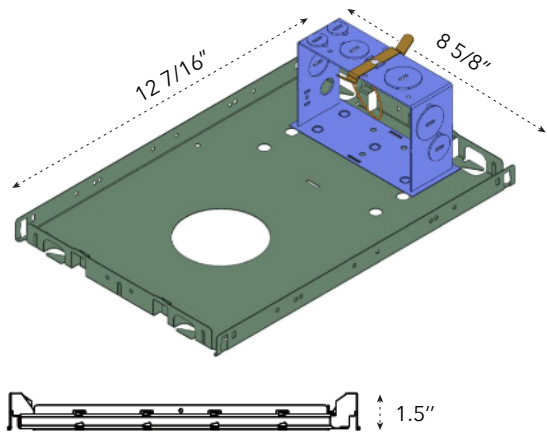
Project:

Type:

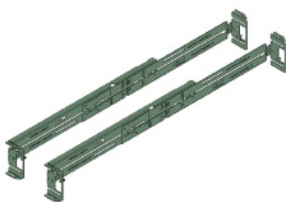
Qty:

MOUNTING OPTIONS

NC - New Construction Frame-In Tray



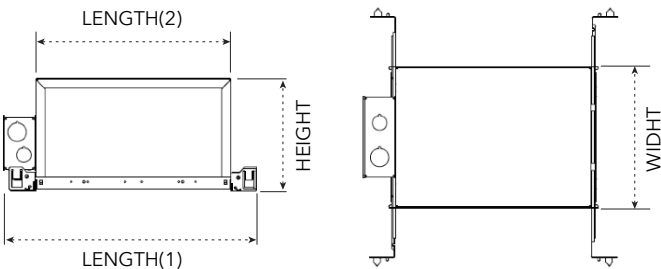
**Standard bar hanger (included)**  
Mounting length 14 3/4" - 26" .  
Extension kit can be ordered separately.



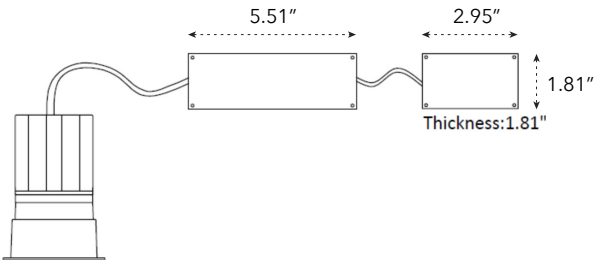
**Commercial bar hanger #1487**  
Butterfly and caterpillar brackets available



Chicago Plenum / Airtight



Length	Width	Height
14 7/8"	12"	8 1/2"



2-sectional driver and wiring box will ship when the AT / CP option is selected. Also can be used for plenum space issues.

Project:

Type:

Qty:

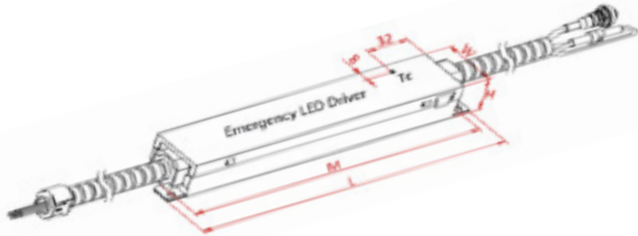
EMERGENCY

PRIMARY SPECIFICATIONS

Output Power Max	Input Power	Input Current Max	Emergency Operating Time	Battery	Input Voltage	Output Voltage	Ambient Operating Temperature	UL Listed for Us and Canada
10W	4W	60 mA	90 min.	LiFePO <sub>4</sub> 24 Hour recharge 7 to 10 year Life expectancy	120-277 Vac 50 / 60Hz	12-55 V <sup>1</sup>	0 °C through 55 °C	ULand cUL (UL924) Emergency LED Driver

Dimensions / Weight

Length	9.5"	Height	1.2"
Width	1.7"	Mounting Length	8.9"
Weight	2.09 lb		



REMOTE TEST SWITCH

The remote test switch may be mounted adjacent to the LED fixture by others.

EMERGENCY BATTERY ACCESS

Above ceiling access is recommended for ease of service, but LED fixture sizes of 4" and larger are capable of below ceiling access. IC / ICAT / CP box and iTS option require an access panel in the ceiling (or other form of access) adjacent to the installation location of the emergency battery.

REMOTE LOCATION

Maximum remote mounting distance of the emergency driver shall be 50 feet. Remote location wiring provided by others. Follow all local and national electric / building codes.

WALL PLATE ACCESSORIES

