

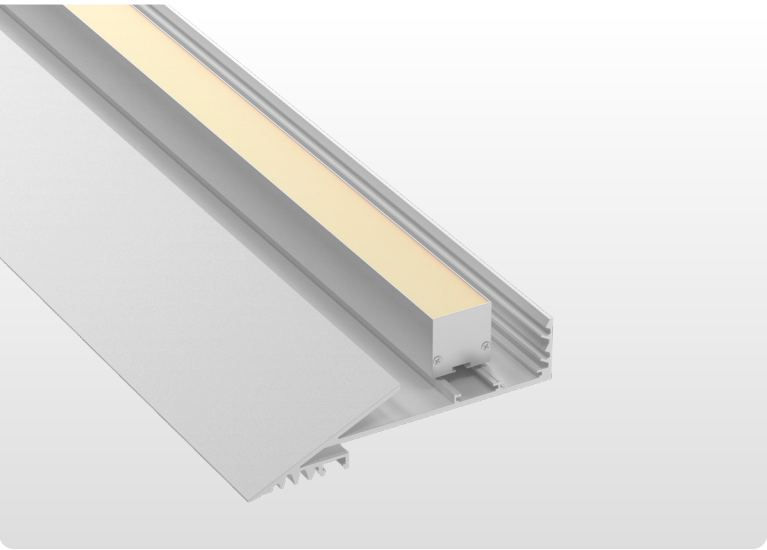
EDGE

Knife-Edge Cove

Project:

Type:

Qty:



System Features

- Multiple profile dimensions and edge depths
- Straight sections, corners, and custom configurations
- Uniform, continuous illumination along ceiling perimeters
- Multiple lumen outputs and power options
- Compatible with leading dimming and control systems
- Designed for recessed ceiling integration

Order Code

ORDER CODE EXAMPLE: EDGE-48V-G5SP-MD-COF-10FT-490DIN-35K-WH-D10

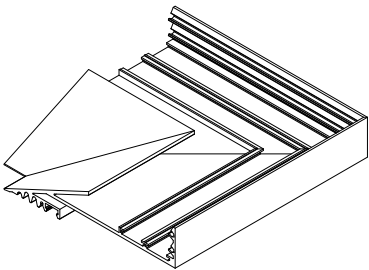
SERIES	VOLTAGE	TYPE	LED TAPE VOLTAGE	SHAPE	LENGTH
EDGE	48V 48VDC	G4-LL	LW 5W/Ft	STR Straight Run (no corners)	_____in feet
	24V 24VDC	G-5SP	ST 4W/Ft	COF Coffer - 4 sides with 90D inside corners	__X__X__X__
		G3-LL	MD 6W/Ft	RAF Rafter - 4 side with 90D outside corners	__X__X__X__
		G7-LL	HO 8.8W/Ft	WALL Continuou wall run with inside and/or outside corners	__X__X__X__X__
			CO Custom	CSI Custom shape with ouside corners	__X__X__X__X__
				CSO Custom shape with inside corners	__X__X__X__X__

CORNER DETALL	CCT	FINISH	DIMMING
Leave Blank	27K 2700K	AN Anodized	ELV ELV/TRIAC Phase Cutting 3%
490DIN	30K 3000K	WH White	D10 0/1-10V(100%-1%)
490DOT	35K 3500K	BL Black	PO1 Premium Driver 0.1% LOG
#90DIN #90DOT	40K 4000K	CS Custom	
#XXDIN or #XXDOT	50K 5000K		
*Specify the number of and degree of the corners (example if you have a shape with 5 corners, 3 corners at 90D and 2 corners at 135D. You would specify 390DIN and 2135DIN)	57K 5700K		
	65K 6500K		
	TW Tunable White 2700K-6500K		
	WD Warm Dim 3000K-1800K		

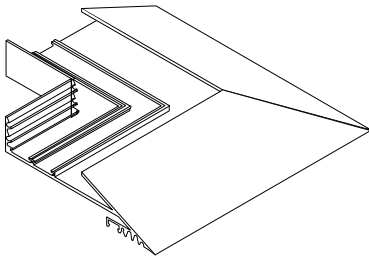
¹DRAWINGS ARE REQUIRED FOR CUSTOM SHAPES

²SIZE OFCHANNEL CAN BE CUSTOMIZED. CONSULT FACTORY

INSIDE CORNER

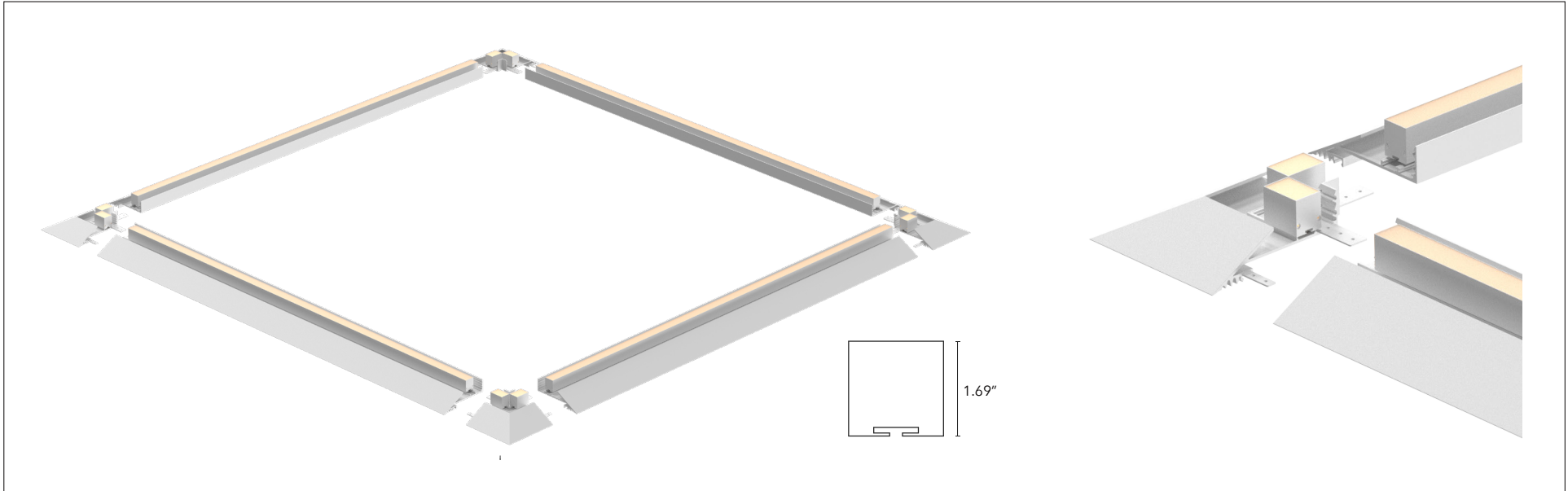
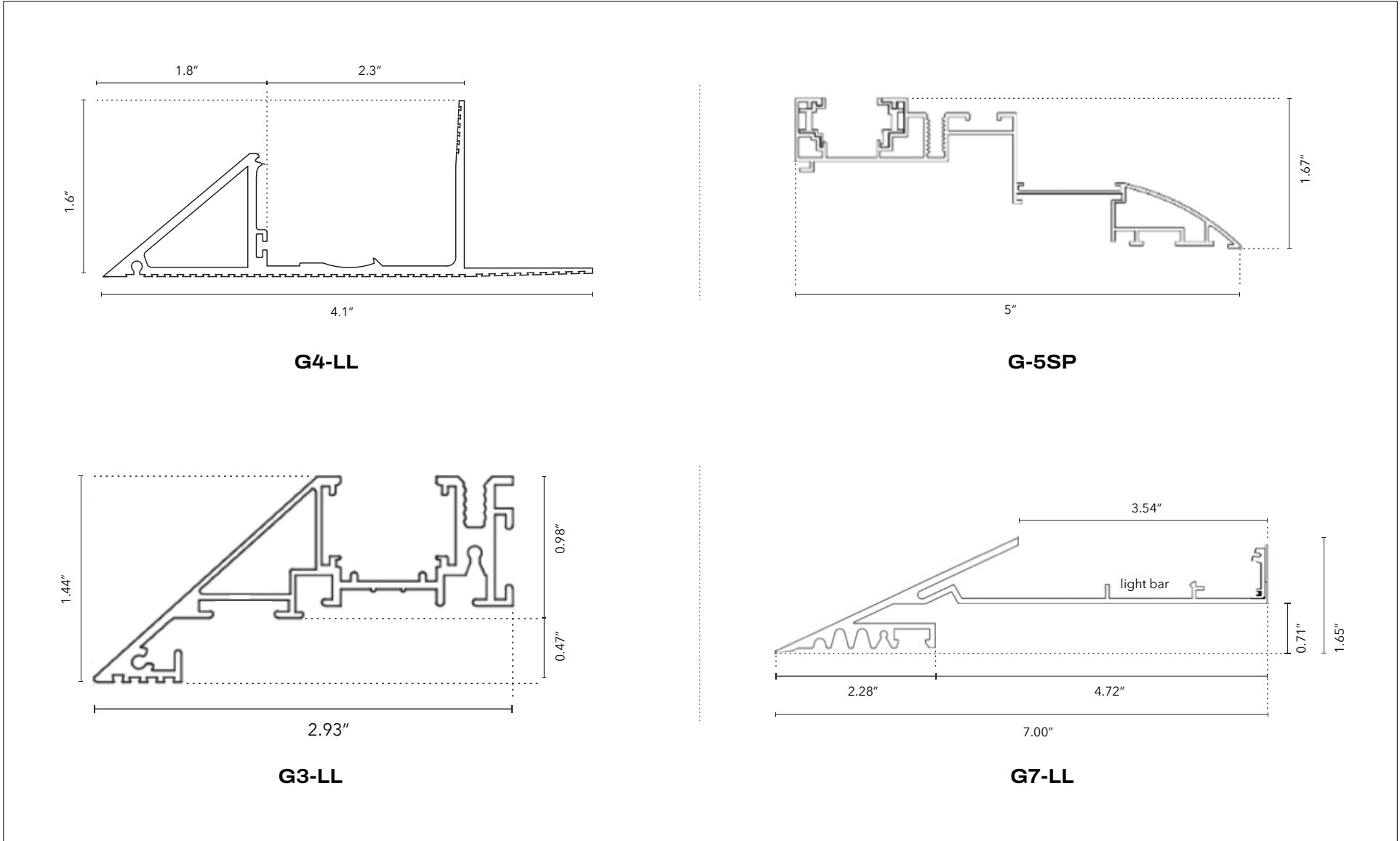


OUTSIDE CORNER



Project:	Type:	Qty:
----------	-------	------

INSTALLATION



Project:

Type:

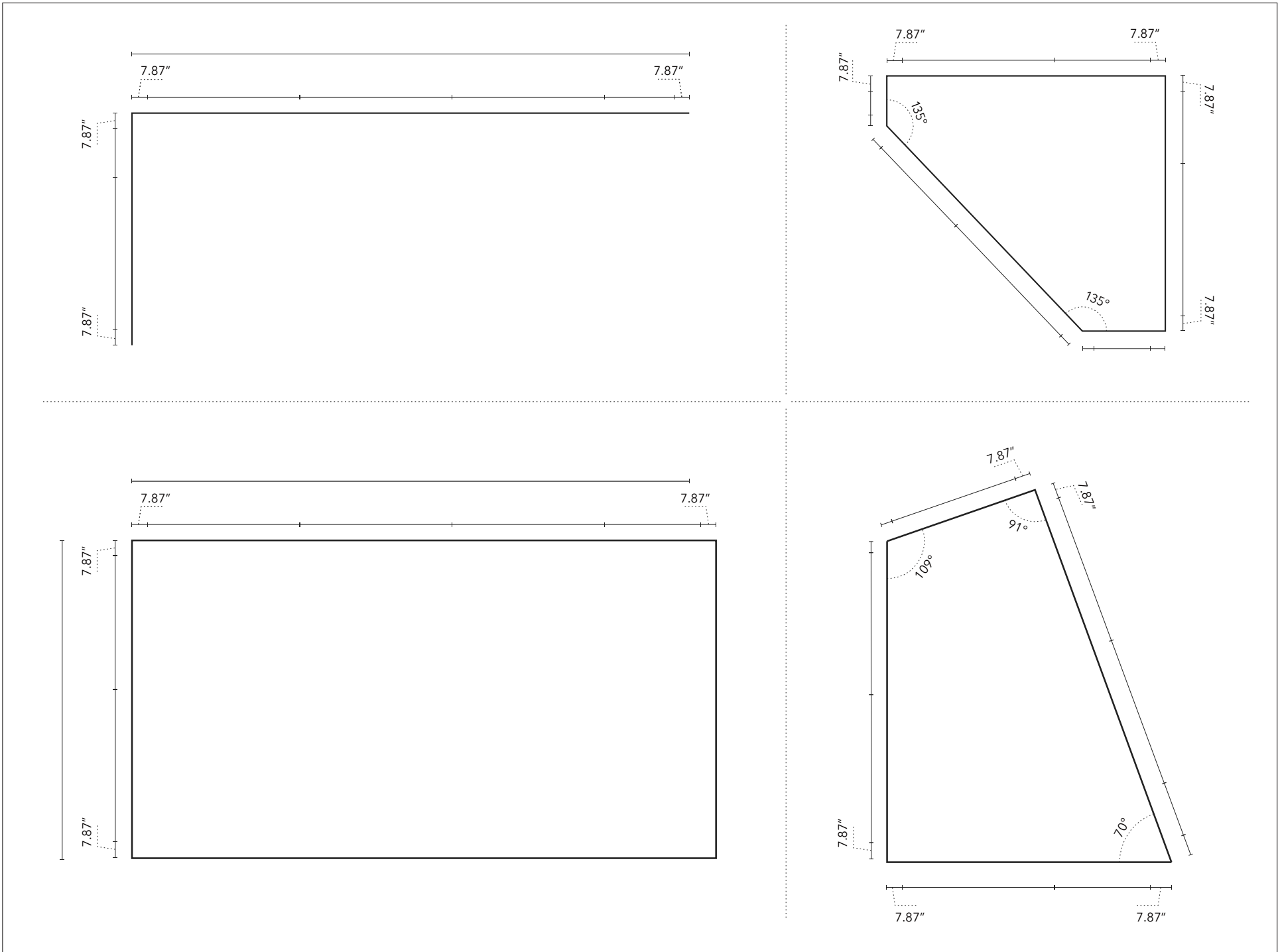
Qty:

INSTALLATION INSTRUCTIONS



CORNER AND JOINT EXAMPLES

Corner angles are designed and generated based on project drawings



EDGE

Knife-Edge Cove

Project:

Type:

Qty:

CORNER DETAIL

Corners will be determined by the factory based on the project drawings

