

Project:

Type:

Qty:



FEATURES



COCKATOO features a unique, retractable light head that offers adjustable positioning and can rotate 360 degrees, providing versatile and dynamic lighting. The fixture boasts an excellent structural design, with a quick-click installation mechanism, making it ideal for high-end lighting projects. Its user-friendly design ensures easy installation, removal, and maintenance, enhancing both efficiency and longevity in demanding environments.



Offered in square and round, with both trimmed and trimless options



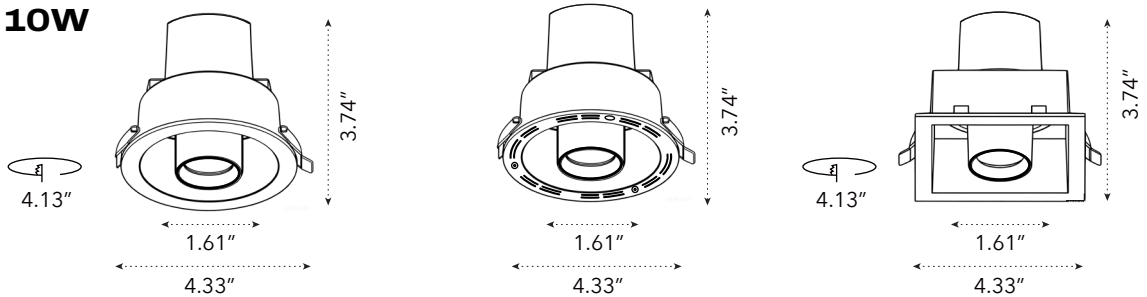
Standard CCTs 27K, 30K, 40K, 50K, 60K



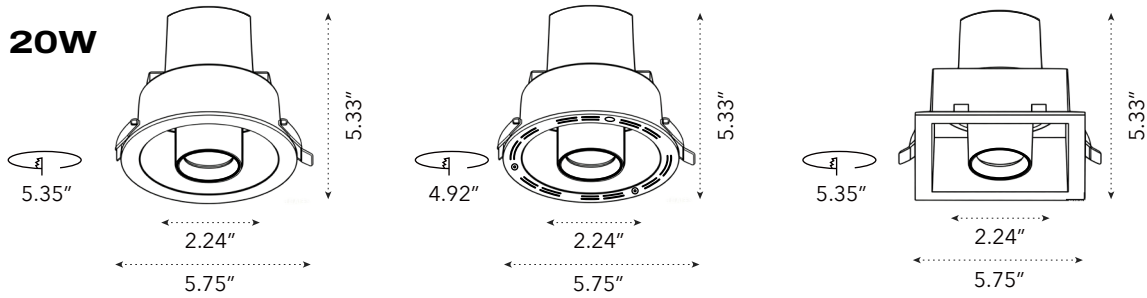
Black and White finish options

SPECIFICATIONS

10W



20W



Input Voltage	100-277V AC
Wattage	10W / 20W
Delivered Lumens	758Lm - 1656Lm +/-5%
LED	<3-Step MacAdam Ellipse (2-Step Available)
CCT	27K, 30K, 35K, 40K, D2W, TW
CRI	>90Ra
Adjustability	15°/ 24°/ 36°
Lamp Life	Max Tilt Angle 45° / Horizontal Rotation Angle 355°
Environment	Trimode Dimming / Triac / 0-10V (100%-1%)
Heat Sink	50,000Hr
Trim	IP20
Operating Temp	-4° F - 104° F

Order Code

ORDER CODE EXAMPLE: CA2-57-T-27K-R24-WH-DAL-NC

SERIES	SIZE	TRIM	CCT	BEAM ANGLE	FINISH	DIMMING
CA2	41 1.61"	T Trimmed	27K 2700K	R15 15 Degree	WH White	ELV ELV/TRIAC Phase Cutting 3%
	57 2.24"	L Trimless	30K 3000K	R24 24 Degree	BL Black	D10 0/1-10V (100% - 1%)
		S* Square	35K 3500K	R36 36 Degree		DAL DALI-2 Dim to off 0.1%
		*Trimmed only	40K 4000K			P01 Premium Diiver 0.1% LOG
			TW Tunable White 2700K-6500K			
			WD Warm Dim 3000K-1800K			

INSTALATION TYPE	EMERGENCY BACKUP
NC New Construction Tray	EM10 10W / 90 Min
IC Insulation Contact	
CP Chicago Plenum	

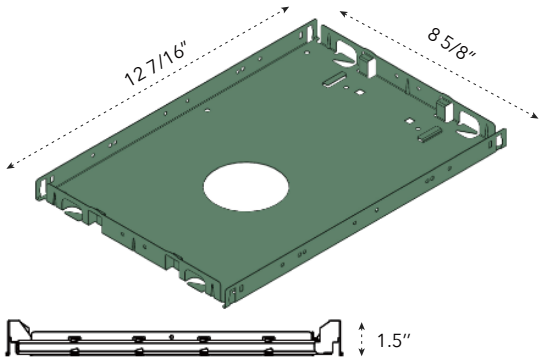
Project:

Type:

Qty:

MOUNTING OPTIONS

NC - New Construction Frame-In Tray

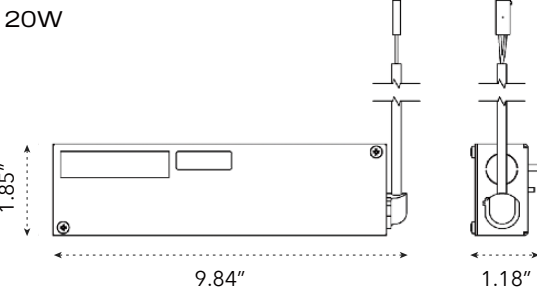
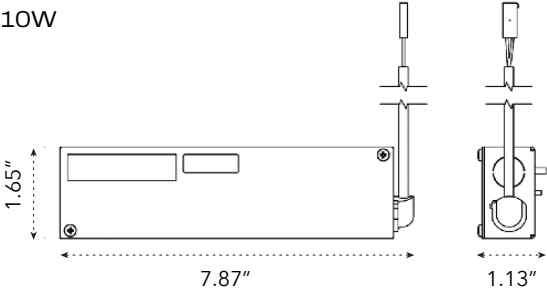


**Standard bar hanger (included)**  
Mounting length 14 3/4" - 26".  
Extension kit can be ordered separately.

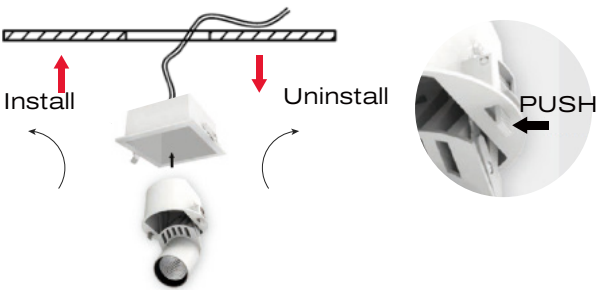


**Commercial bar hanger #1487**  
Butterfly and caterpillar brackets available

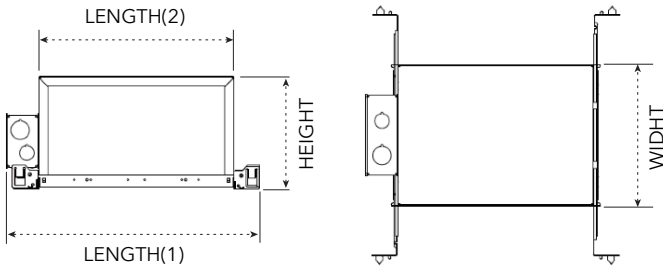
LED Driver Enclosure and Junction Box



New Construction & Remodel Mounting



IC / Chicago Plenum / Airtight



Length	Width	Height
11 3/4"	8 1/2"	6 3/4"

Project:

Type:

Qty:

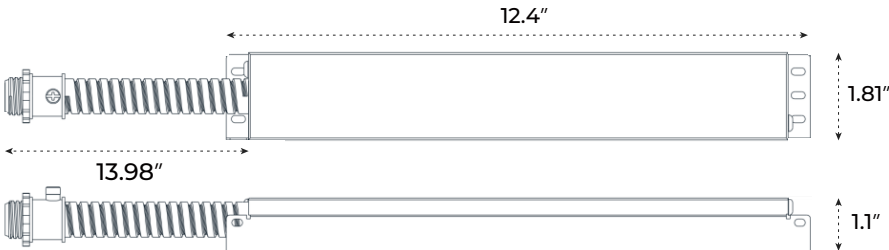
EMERGENCY

PRIMARY SPECIFICATIONS

Output Power Max	Input Power	Input Current Max	Emergency Operating Time	Battery	Input Voltage	Output Voltage	Ambient Operating Temperature	UL Listed for Us and Canada
8W	<5W	100mA	>90 min	Li-ion 18650 7.4V 2500mAh	100-277Vac	15-55Vdc	0°C through 50°C	CUS

Dimensions / Weight

Length	12.4"	Height	1.81"
Width	1.1"	Mounting Length	11.88"
Weight	1.72 lb		



REMOTE TEST SWITCH

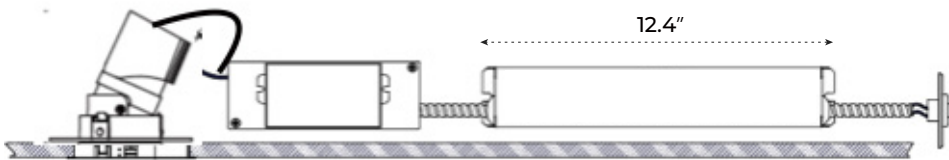
The remote test switch may be mounted adjacent to the LED fixture by others.

EMERGENCY BATTERY ACCESS

Above ceiling access is recommended for ease of service, but LED fixture sizes of 4" and larger are capable of below ceiling access. IC / ICAT / CP box and ITS option require an access panel in the ceiling (or other form of access) adjacent to the installation location of the emergency battery.

REMOTE LOCATION

Maximum remote mounting distance of the emergency driver shall be 50 feet. Remote location wiring provided by others. Follow all local and national electric / building codes.



WALL PLATE ACCESSORIES

