

Project: _____ Type: _____ Qty: _____



Full range of cylinders offered in round and square.



3 types of installation (pendant, surface and wall mount) in both adjustable and fixed options.



Surface and pendant mounting options available for both interior and exterior applications (refer to IP65 Spec Sheet for exterior options).



Multiple installation options offered.



High power range from 6W to 100W. Suitable for applications up to 60 feet. Custom wattages available



Certain sizes are available with internal emergency battery backup.



Anti-glare design with low UGR <19 even for high output series. Low output has UGR <10 and shielding angle of 25 degrees. High output has UGR <17 and shielding angle of 40 degree.

SPECIFICATIONS

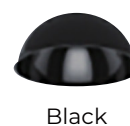
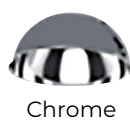
3-Step Color Binning Standard / 2-Step Color Binning Available



Finishes



Reflectors



Input Voltage	100-277V AC
Wattage	6W - 100W
Delivered Lumens	800Lm-7650Lm
Efficacy (LPW)	85+Lm/W
CCT	27K, 30K, 35K, 40K
CRI	>90Ra
Beam Angle	15°, 24°, 36°, 45°, 60°
UGR	<19
Dimming	Phase & 0-10v (100%-5%)
Lamp Life	50,000Hr
Environment	IP40
Operating Temp	-4° F - 131° F

Order Code

ORDER CODE EXAMPLE: A-CYL-RA-15W-30K-45D-BK-B-HC-ARC-MRC-AC###-JBA-EM10-D10

SERIES	SHAPE	WATTAGE	CCT	BEAM ANGLE	FINISH		OPTICAL ACCESSORIES
					Reflector	Shell	
A-CYL	RD Round Fixed SQ Square Fixed	6W 510LM	30W 2550LM	27K 2700K	15D 15 Degree	WH - White	HC Hexcell Louver LS Linear Spread SF Softening Lens DGD/(A to E) Drop Glow Diffuser <small>Please select from options A-E shown in the image below</small>
		8W 700LM	40W 3400LM	30K 3000K	24D 24 Degree	BK - Black	
		10W 850LM	50W 4250LM	35K 3500K	36D 36 Degree	CH - Chrome	
		12W 1100LM	60W 5100LM	40K 4000K	45D 45 Degree	GD - Gold	
		15W 1275LM	90W 7650LM	TW Tunable White 2700K-6500K	60D 60 Degree	BN - Black Nickel	
		20W 1700LM	100W 9000LM	WD Warm Dim 3000K-1800K		el	

Custom wattages available

INSTALLATION TYPE	CANOPY TYPE	SUSPENSION	SPECIAL INSTALLATION	EMERGENCY BACKUP	DIMMING
PD Pendant Mount SF Surface Mount ASC Adjustable Stem Surface ARC Adjustable Stem Recessed	For Pendant Mount Option SDC Standard Deep Canopy FRC Flat Round Canopy MRC Mini Round Canopy SWV Swivel Stem Canopy	For Pendant Mount Option Leave blank if surface mounted AC## Cord/AC Cable RS## Rigid Stem ##=inches	SL## ² Slanted Ceiling Adapter For Surface Mount Only CD## ³ Conduit Feed JBA Jbox Adapter TLA Trimless Adapter (mud-in ring)	EM06 ⁴ - 6W/90 mins EM10 ⁵ - 10W/90 mins Internal EMBB for most sizes	D10 - 0-10V ELV - ELV/Phase



For outdoor range: Please check A-Cylinder IP65 Spec.
For wall-mounted range, please check IP66 Wall Spec.



Drop Glow Diffuser details

¹Adjustable swivel stem for sloped ceiling

²Ceiling slant angle will need to be specified

³Four (4) knockouts are provided as standard. Installers can remove the aluminum knockouts on site as needed.

⁴Internal EMBB/cylinder body will be min 6" in width regardless of wattage

⁵EM10 is remote only



Project:	Type:	Qty:
----------	-------	------

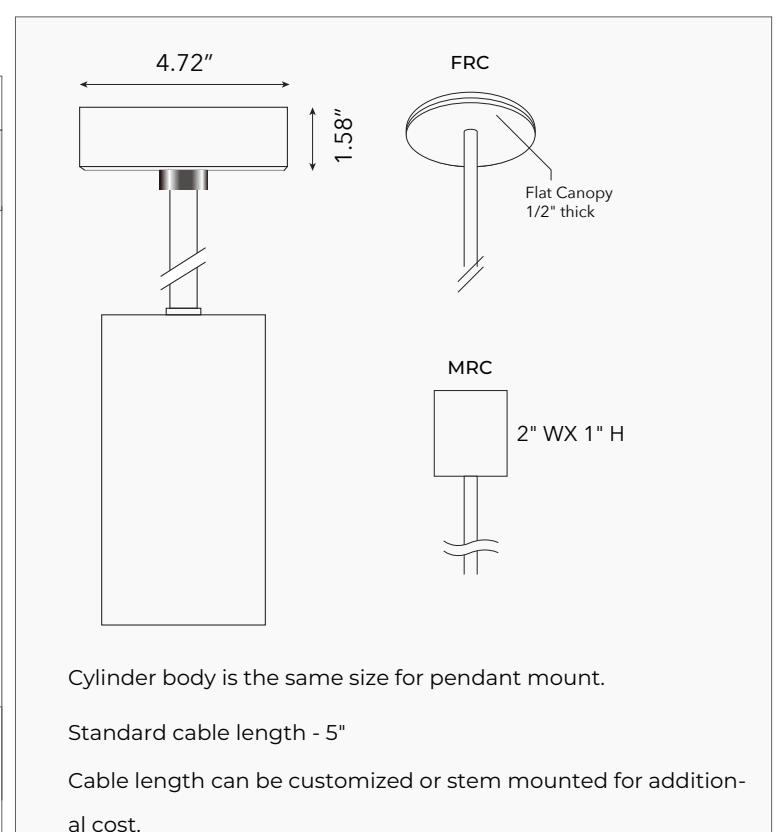
ROUND OPTIONS

*Internal EMBB Min Size: 6.22" (applies to 15W-25W models)

6 / 8 / 10 / 12W	15W	20/25W	30/35W	20W EM / 30W EM / 40W
40W EM / 50W / 60W	80W / 90W / 100W	<p>All cylinders can be customized Consult factory for custom size.</p> <p>Please note, depending on driver availability, the cylinder size may change slightly from what is shown.</p>		

The length of the stem and the wire can be customized.

POWER CORD	STEM	
PVC Cable	Stem	Swivel stem ¹ Max 45° tilt
Power cord length (*): Standard 59" Custom lengths available upon request	Stem length: Min 24" and 35" ¹ Custom lengths available upon request	



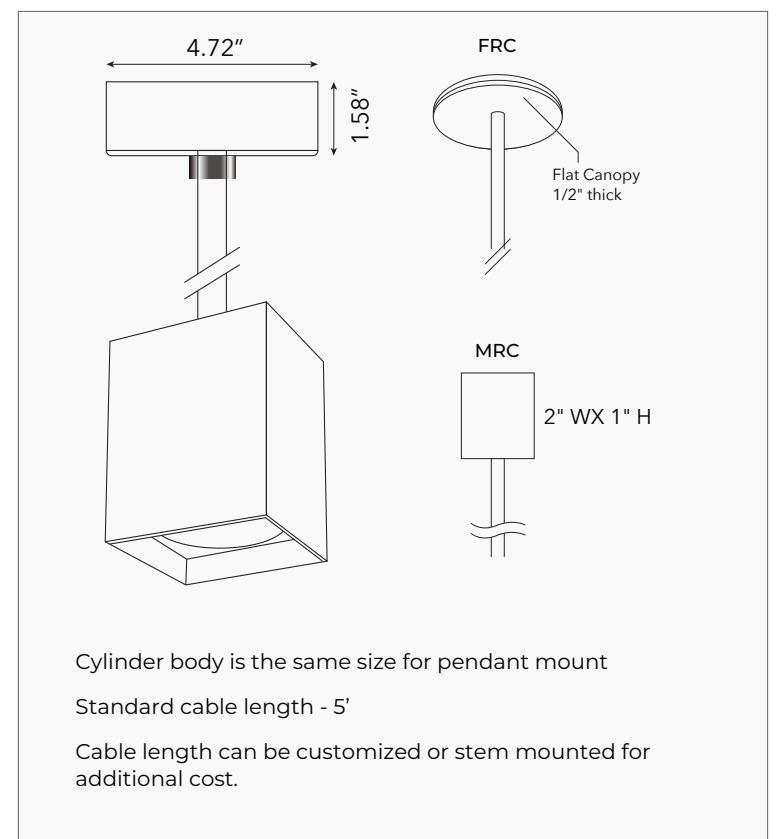
Project:	Type:	Qty:
----------	-------	------

SQUARE OPTIONS

10W/15W	20W/25W	30W/35W	40W/45W 10-40W EM (with 2 in one driver)	For higher wattages, consult factory for cylinder size.
<p>3.54"</p> <p>2.91"</p>	<p>3.94"</p> <p>3.61"</p>	<p>4.72"</p> <p>4.45"</p>	<p>5.51"</p> <p>5.12"</p>	

The length of the stem and the wire can be customized.

POWER CORD	STEM	
PVC	Stem	Swivel stem ¹ Max 45° tilt
<p>*</p>	<p>*</p>	<p>*</p>
Power cord length (*): Standard 59" Custom lengths available upon request	Stem length: Min 24" and 35" ¹ Custom lengths available upon request	

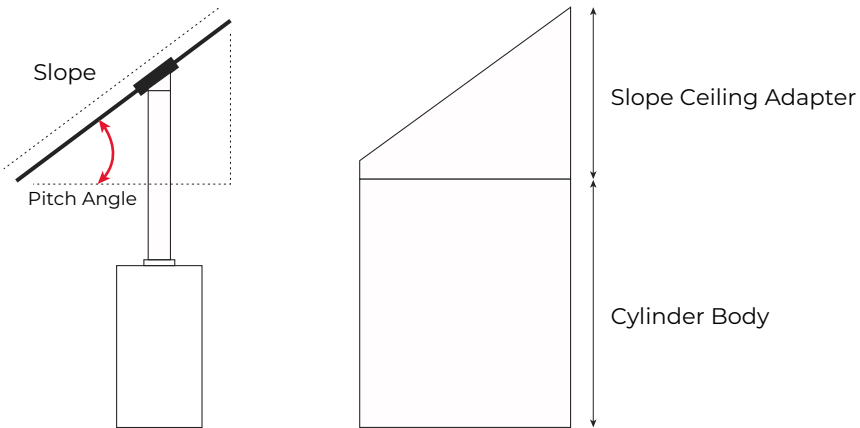


All cylinders can be customized in size (width by height).
Consult factory for custom size.

Please note, depending on driver availability, the cylinder size may change slightly from what is shown.

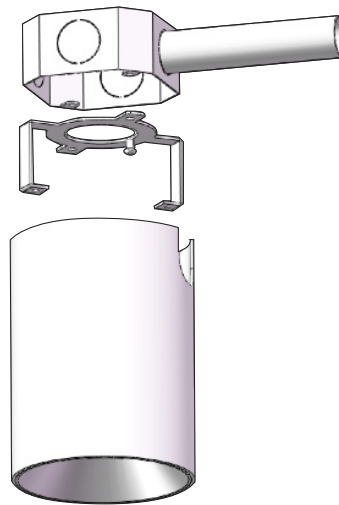
Project:	Type:	Qty:
----------	-------	------

SLOPED CEILING



The slope ceiling adapter will be determined by the ceiling pitch angle.
Adapter works with all cylinder sizes.

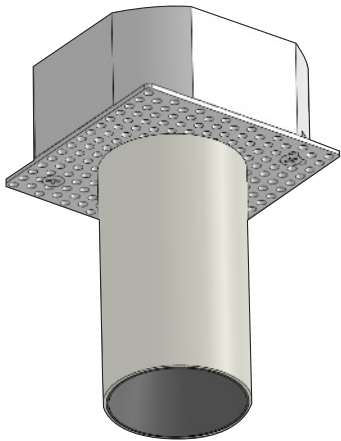
CONDUIT FEED



Min 4.25" width

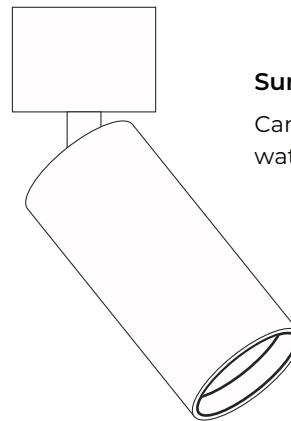
Conduit feed cylinder will fit over any standard 4" octagonal Jbox.
Works with all cylinder wattages and sizes. 6W-20W cylinder will have a minimum body width of 4.25" .
Can work with up to 4 conduit feeds.

LMR (trimless mud-ring)⁶



Trimless option is for cylinders that have a width of less than 4" and below.

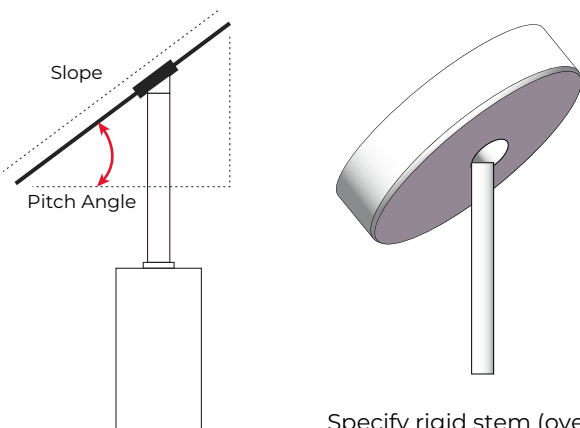
ADJUSTABLE STEM MOUNTING OPTIONS



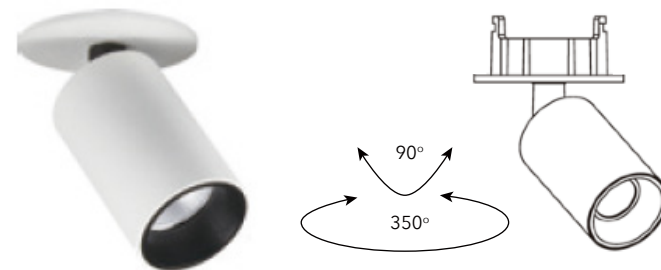
Surface-mounted version

Can be provided with IP54 rating and supports all wattages.

SWIVEL STEM CANOPY



Specify rigid stem (overall) length.



Recessed version

Comes with a new construction mounting tray and a driver housed in an enclosure box Available for cylinders up to 40W.

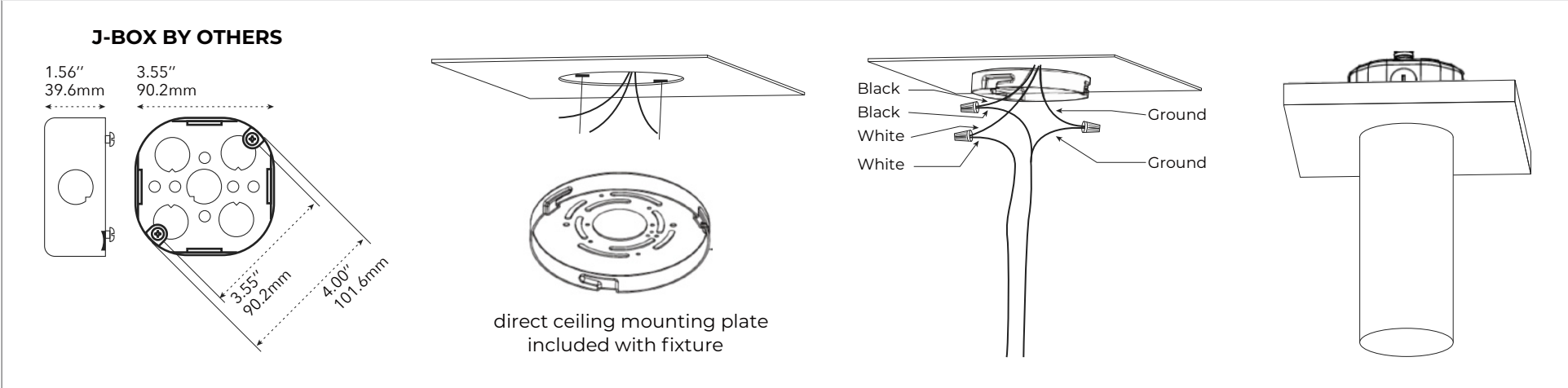
⁶to be used with cylinders that have a diameter less than 4"

Project: _____ Type: _____ Qty: _____

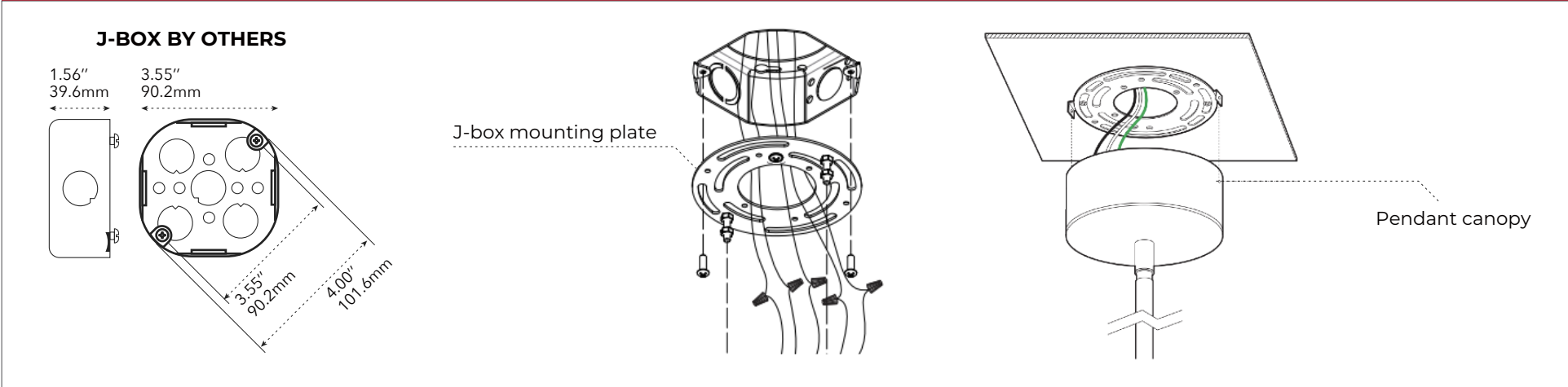
MOUNTING OPTIONS

JBA -JBOX ADAPTER⁷

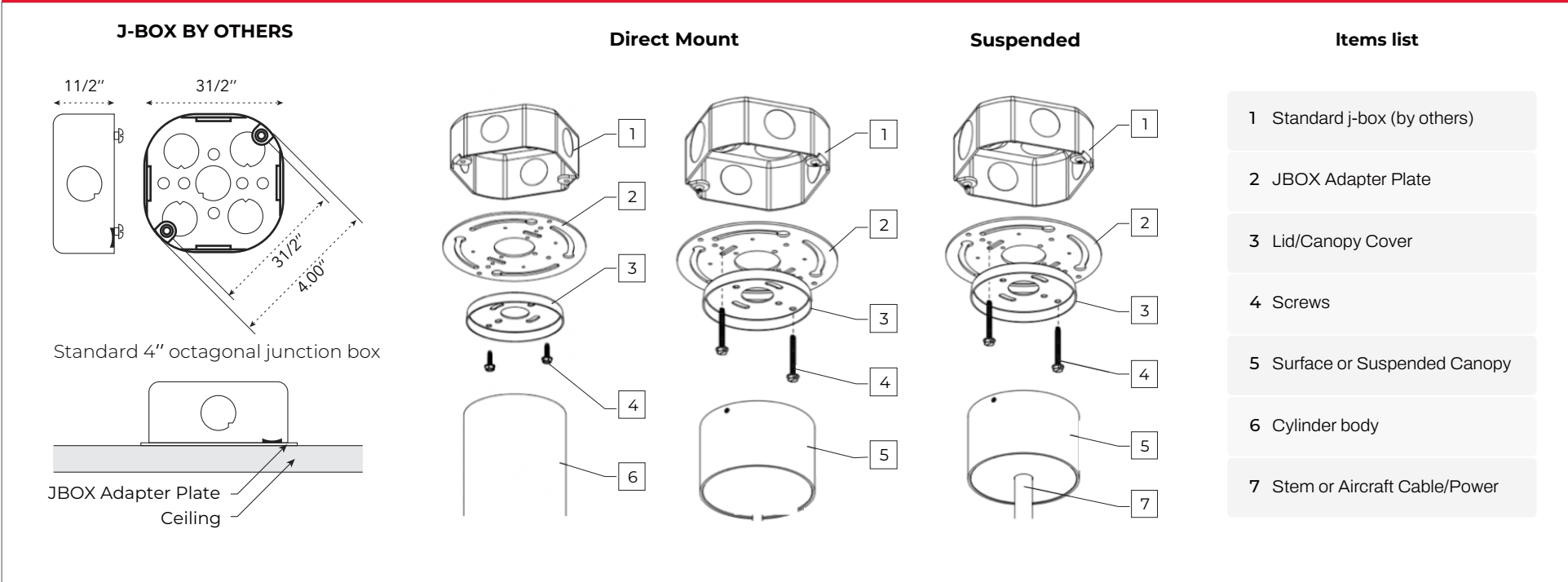
Direct ceiling mount with integral mounting plate and driver



PENDANT MOUNT

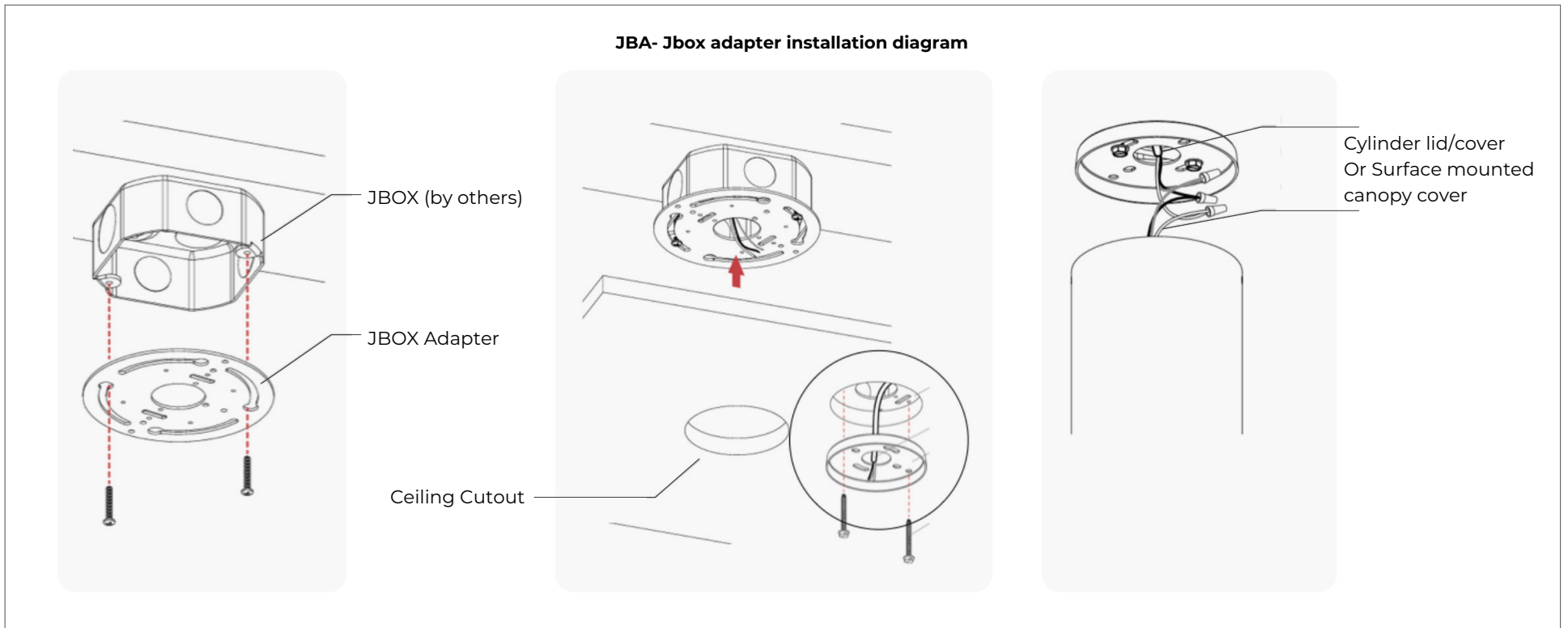


(JBA) JBOX ADAPTER INSTALLATION DIAGRAM



⁷to be used with cylinders that have a diameter less than 4". Must be installed on the jbox prior to the drywall ceiling going up.

Project:	Type:	Qty:
----------	-------	------



To be used with cylinders or canopies that are smaller than the jbox opening

INTEGRAL DRIVER				
Order code	FRC Flat round canopy, 4" octagonal junction box	CDR Conduit feed, round canopy	DMNC Direct mount, new construction	DR Deep round canopy
Canopy type				