

# Eisner Amper

## Office Relocation

Philadelphia, PA. 42,000 SF.

## Services

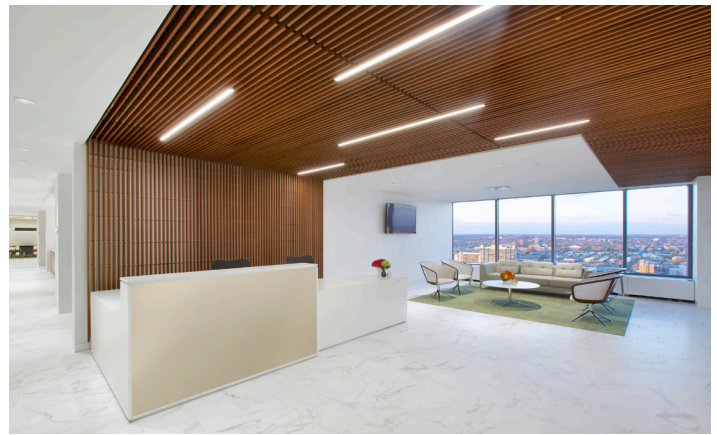
Architecture, Planning, Interior Design, Furniture

## Description

FCA was retained by EisnerAmper, one of the largest consulting and accounting firms in the nation. The design spans the top two floors of One Logan Square, in the Art Museum district. FCA worked with EisnerAmper to evaluate the pros & cons of relocating 30,000 SF from the suburbs and combining with their 10,000 SF Philadelphia office. The FCA team provided pre-lease advisory services to support the decisions. The combined new office puts all the EisnerAmper talent under one roof and supports the EisnerAmper “clients first” culture.

FCA created a new benchmark for the firm. The planning supports collaboration, core work processes, encourages ad hoc idea sharing in a variety of work settings. Its timeless classic finish palette is a calming backdrop, while subtle hints of the firm's brand color and core values are integrated throughout.

The penthouse floor houses public spaces along with consulting teams, the lower floor houses traditional accounting services and a large town center that is the hub of the firm. As the consulting and accounting industry evolves to meet an ever-competitive business climate, the space is ready and can flex to support future business needs.



Interior, meeting space



Interior, meeting room



Interior, kitchen



Interior, lobby