

# Biotrial

## North American Headquarters

Newark, NJ. 70,000 SF.

### Description

The new headquarters for the French contract research firm Biotrial embodies the company's business and activities in relation to the public realm. Biotrial is contracted to ensure that new drugs coming to market have no detrimental side effects; their studies are reviewed and approved by the FDA. It must effectively insure the confidentiality of its volunteers while running an open review process for new drugs. Privacy vs. transparency, open vs. closed, become central themes for the firm and therefore of its architecture.

The basic concept of the building is two interlocking planes: one plane made of solid black brick with matching mortar, and the other is made of a fritted curtain wall. A ribbon of metal panels ties the two planes together and represents the fluid nature of chemistry and science. This metal ribbon begins on the private side of the building, forming the canopy, and continues inside the building, where it becomes the lobby ceiling. It emerges on the public side as a frame for the vestibule.

Francis Cauffman designed a tall, narrow building with shallow floor plates to allow natural light to penetrate all parts of the building. The five-story structure provides 70,000 SF of space for administrative and recruitment offices, laboratories, a pharmacy, volunteer accommodations, clinical trial rooms and a café. The café is adjacent to a private volunteers garden that includes a commissioned sculpture by the artist James Dinerstein. The ground floor has a continuous glazed wall, which allows sunlight into the interior. A grand staircase in the two-story lobby accesses a bridge that connects the two sides of the second floor. The upper floors of the building appear to hover above this transparent base.

### Services

Architecture, Planning, Interior Design



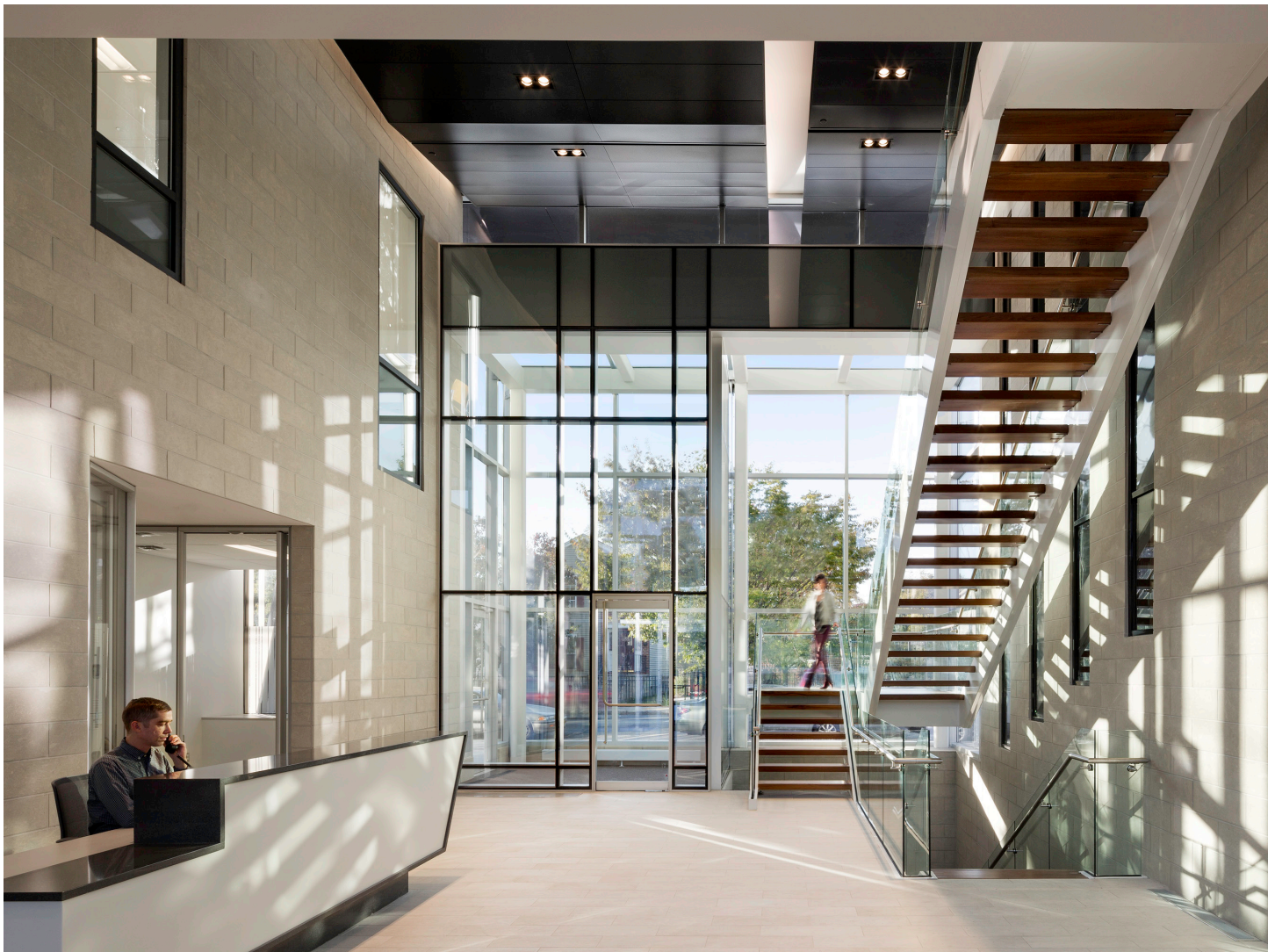
Exterior, building



Interior, hallway



Interior, observation room



Interior, reception