



WOLF HOME PRODUCTS®

C A B I N E T R Y

BUILDERS MARK™
FROM **WOLF** HOME PRODUCTS®

THE BUDGET-FRIENDLY CHOICE FOR SPACES BIG AND SMALL

Builders Mark cabinets feature quality wood doors and a variety of smart storage solutions as well as functional and decorative accessories to make any size project your own. Whether you're creating a large decorative space or building a small galley kitchen, when you choose Builders Mark cabinets your imagination won't be limited—even if your budget is.



SIERRA



Espresso Stain



Harvest Brown Stain



Graphite Stain



White Paint



Haze Paint

CABINET FEATURES

- Durable finish resists scratches, dents and dings
- 1/2" industrial-grade furniture board drawers and cabinet sides
- Solid-wood face frames dadoed and joined with wood screws or dowels
- Side-mounted drawer guides and fully captured drawer bottoms
- Six-way adjustable, fully concealed hinges
- Mortise and tenon, flat panel door
- Easy-clean interior

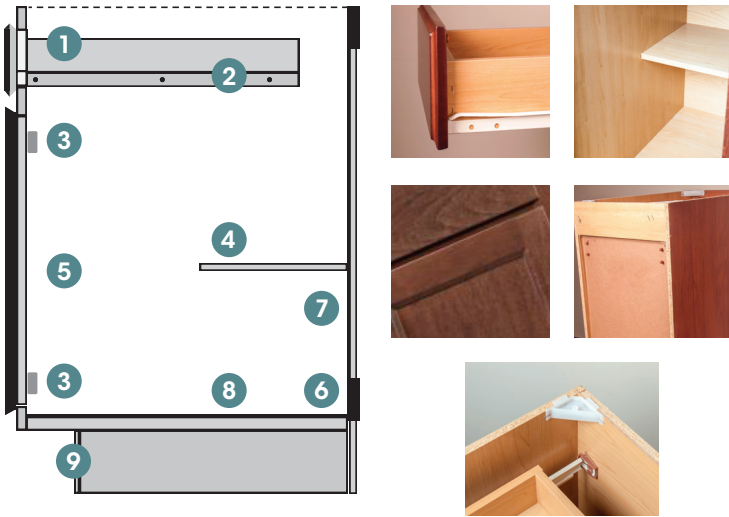
WALL CABINET CONSTRUCTION

- A** 1/2" industrial-grade furniture-board top
 - B** Six-way adjustable, fully concealed hinge
 - C** 1/2" industrial-grade furniture-board adjustable shelf
 - D** Low-pressure melamine sides
 - E** 1/2" industrial-grade furniture-board hanging rail
 - F** 1/2" industrial-grade furniture-board bottom
 - G** 1/8" laminated MDF cabinet back
- All face frames are 3/4" x 1 1/2" solid-wood, dadoed and joined with screws or doweled
 - All single-door cabinets are hinged left. Wall cabinets can be flipped during installation for right hinge applications



BASE CABINET CONSTRUCTION

- 1** 1/2" industrial-grade furniture-board drawer box
 - 2** Side-mounted, epoxy-coated, 75 lbs. nylon, lubricated roller glides
 - 3** Six-way adjustable, fully concealed hinge
 - 4** 1/2" industrial-grade furniture-board, half-depth fixed shelf
 - 5** Low-pressure melamine sides
 - 6** 1/2" industrial-grade furniture-board hanging rail
 - 7** 1/8" laminated MDF cabinet back
 - 8** 1/2" industrial-grade furniture-board bottom
 - 9** 1/2" furniture-board toekick
- All face frames are 3/4" x 1 1/2" solid-wood, dadoed and joined with screws or doweled
 - All single-door cabinets are hinged left. Base, tall and vanity cabinet doors will be reversed during installation for right hinge applications.



THE BUDGET-FRIENDLY CHOICE FOR SPACES BIG AND SMALL

INTRODUCING: BUILDERS MARK VERO. True to its name, Builders Mark cabinets offer designers, contractors, and builders ample design opportunities at an extremely affordable price point. With the Vero series, this collection of three new door styles offers you more options to give any size project some added style and increased durability.



SHEA



Pearl SmartShield



Cinder SmartShield



SLOANE



Mocha Stain

CABINET FEATURES

- Standard overlay
- Mortise and tenon, flat panel door
- 3/8" industrial-grade furniture board sides on base, wall and vanity cabinets, 1/2" sides on tall cabinets
- Solid hardwood face frame, pocket screw joinery construction
- 1/2" industrial-grade furniture board drawers
- Side-mounted epoxy drawer guides, 3/4" extension
- Six-way adjustable, fully concealed hinges
- Durable finish resists scratches, dents and dings
- Easy-clean interior

SMARTSHIELD™ TECHNOLOGY

Cleanups are covered with SmartShield Technology. Our Shea door style features an ultra-durable finish that stands up to wear and tear, resists household stains and wipes clean every time. The beauty and consistency of SmartShield Technology gives you a clean, contemporary style with added durability.

STYLE

High fashion look with smooth, even color consistency and a quality finish that has a warm, sleek feel when compared to other similar products.

CONSISTENCY

360 degrees of crisp, consistent beauty with no wood grain issues or finish variations. You get a smooth, consistent finish every time.

DURABILITY

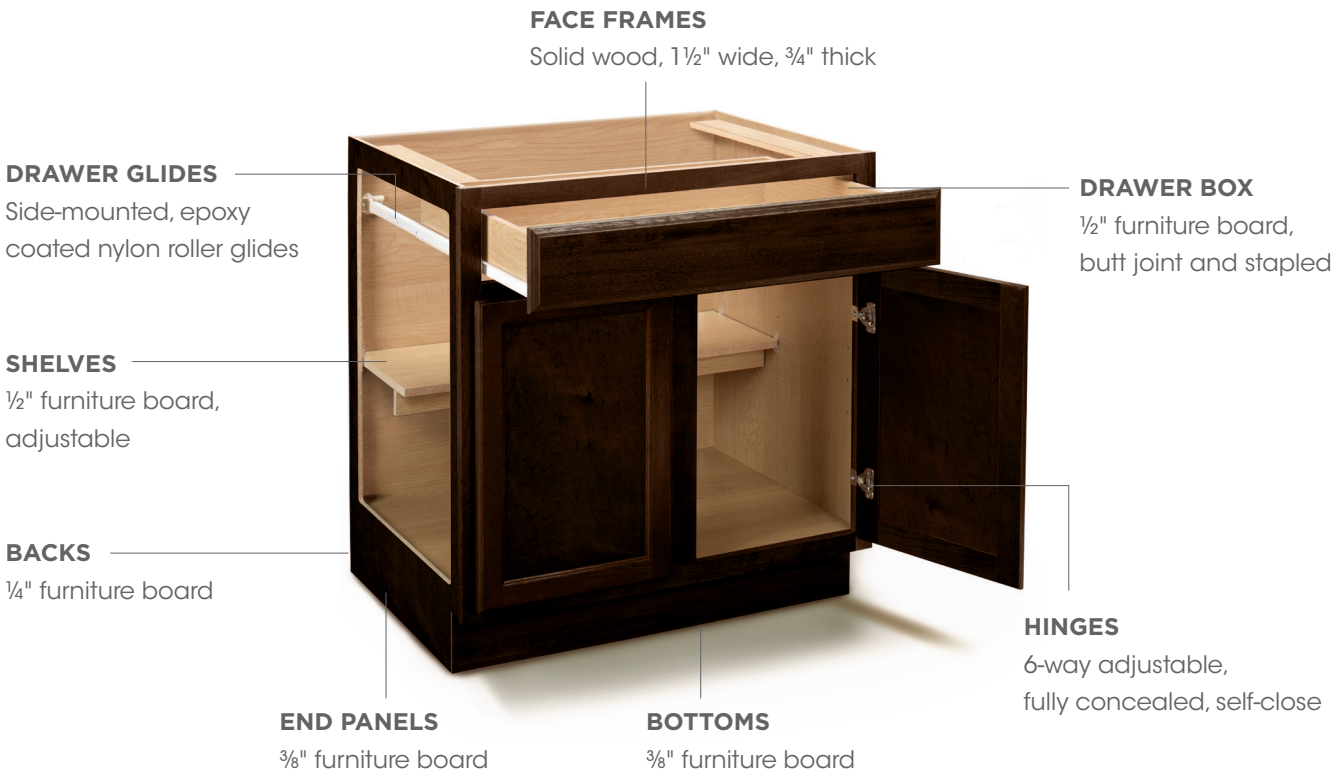
No roughness, peeling, cracking and open joints. The effects of light exposure and aging are minimal in comparison to wood products.

EASY TO CARE FOR

Resists moisture and common household stains. A breeze to clean and makes an excellent choice for homeowners with pets or young children



CABINET CONSTRUCTION





TRANSFORMING
HOMES FOR OVER

175
— YEARS —

Wolf Home Products® is an innovator in the building products industry. We've cultivated more than 175 years of business experience into a total satisfaction guarantee. With our vast inventory of kitchen and bath, outdoor living and building products, we deliver your orders in a fraction of the time and ensure you get unparalleled value — when and where you need it. Wolf stands behind our service because, above all, Wolf stands behind you.



Find us on Instagram @**wolfhomeproducts**
for inspiration on your next project!



Kitchen & Bath



Outdoor Living



Building Products

wolfhomeproducts.com | © 2020 Wolf Home Products. All Rights Reserved.

All photos are representative of product. Please review an actual product sample with your dealer before making your final selection. Information contained within is subject to change without notice.

