

Dyke **Door Systems**

POWERED BY ENDURA® COMPONENTS



POWERED BY
ENDURA 
DOOR COMPONENTS MADE IN THE USA

Serving the Building

SERVING THE BUILDING INDUSTRY FOR OVER 150 YEARS.

Dyke Industries is a family owned company which has been in business since 1866. Dyke Industries, Inc. is the corporate successor to two millwork manufacturing companies, Dyke Bros., which was established in Fort Smith, Arkansas in 1870, and Cole Manufacturing Company, which was established in Memphis, Tennessee in 1866. The Company, in its present form was incorporated in 1942.

At the present time, the company operates 15 distribution outlets, serving 18 states with a broad line of building materials, including millwork, lumber, doors, windows and related items.

We serve the Southeast US as a wholesale distributor of a multitude of millwork and related products. Dyke has always been a forerunner in the millwork industry because of the belief in service. Dyke strives to deliver a quality product at a competitive price on time and complete.

DYKE DOOR SYSTEMS POWERED BY ENDURA®

Smarter Components and Better Performance.

When you choose Dyke Door Systems Powered By Endura components, you receive a beautifully-crafted door along with a fully-integrated high-performance door system.

Door systems Powered By Endura are engineered to create smarter, better experiences for everyone, every time. Endura's innovative component solutions work together to account for real-world challenges you face each day, delivering secure, hassle-free performance, and unmatched quality and value. Imagine what a Smarter Door™ experience can do for you - Imagine your door, Powered By Endura.



Industry Since 1866

JELD-WEN® Panels

Simpson® Panels

Powered By Endura® Components



Dyke Industries, Inc.

Dyke Industries

Dyke serves the Southeast US as a wholesale distributor of a multitude of millwork and related products.



JELD-WEN
WINDOWS & DOORS

JELD-WEN® Door Panels

JELD-WEN is a leading manufacturer of fiberglass entry doors, offering the best possible service and reliability.

Simpson®
Door Company

Simpson® Door Panels

Simpson's comprehensive line of exterior doors are available in a variety of wood species, sizes and glass options.



Powered By Endura® Components

Endura is committed to delivering industry-leading exterior door component solutions that enhance performance, save time, eliminate service calls and cut costs, delivering a smarter door™ experience for everyone, every time.

START WITH THE DOOR PANEL.

JELD-WEN® PANELS.

With JELD-WEN, you can expect products that are more than just beautiful on the outside. The inner workings of our windows and doors are engineered to function flawlessly for years to come.



SIMPSON® PANELS.

As the first and last impression, your door stands for your creativity and style. Welcome beauty and quality to your home with Simpson's comprehensive collection of exterior doors.



LEVEL 1: STANDARD PERFORMANCE.

- ▶ Steel or Fiberglass Door Panels
- ▶ Z-Series Fixed Inswing Sills (ZFI)
- ▶ Ultimate Lite Astragal
- ▶ Primed Wood Frames
- ▶ Double Bulb (with fin) Door Bottom



PRIMED WOOD DOOR FRAMES

Standard wood frames provide stability in the complete door system.

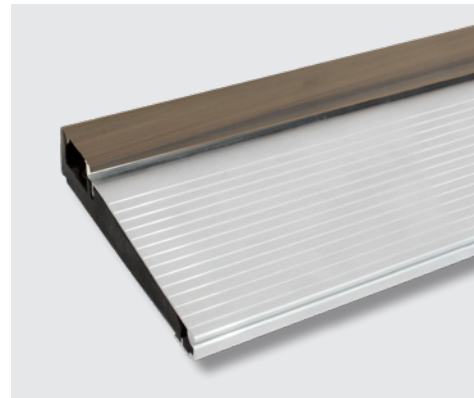
- **Crafted with Strength:** Finger-jointed with absolutely no knots or gouges in the wood
- **180-Day Primer:** Our 180-day primer gives you terrific coverage and an extra 180 days before finish coating is required.



Z-SERIES FIXED INSWING SILLS (ZFI)

ZFI provides a streamlined vinyl cap surface to protect the internal mechanisms from water and dirt.

- **Built to Last:** Engineered with composite materials which provides resiliency throughout time.
- **Seals Against Air & Water:** Creates a seal against air and water infiltration.



DOUBLE BULB (WITH FIN) DOOR BOTTOM

Double Bulb Door Bottoms offer a superior barrier against water, air, and dirt with the protection of two flexible sealing bulbs. The Leading Edge Bulb design provides a continuous seal along the sill cap, creating maximum contact between the door and the sill.

- **Resilient Material:** Always keeps its shape.
- **Minimal Tools Required:** The kerfed feature is convenient and easy to install.
- **Secure Sealing:** Provides stability on the door panel while also delivering a proper seal to your home.



ULTIMATE LITE ASTRAGAL

Cost efficiency doesn't have to mean compromised French door performance.

- **Simple Bolt Operation:** Slide to engage. Slide to disengage. That's it.
- **Leak-Fighting Performance:** Spring-loaded Floating Boot works with pre-installed Simple Solution Corner Pad and weatherstrip to fight air and water infiltration.
- **Easy Hardware Customization:** 4-way adjustable strike retainers feature Snap-n-Size™ functionality and can be easily removed, resized and repositioned without additional cutting tools.



LEVEL 2: ENHANCED SEALING & PERFORMANCE.

- ▶ Fiberglass or Wood Door Panels
- ▶ Z-Series Adjustable Inswing Sills (ZAI) with sealing gaskets
- ▶ Ultimate Push Button Astragal
- ▶ Primed FrameSaver® Rot-Proof Door Frames
- ▶ Double Bulb (with fin) Door Bottom

PRIMED FRAMESAVER ROT-PROOF DOOR FRAMES

FrameSaver combines the performance of composite and the strength of wood in one framing solution.

- **Rot Proof For Life:** FrameSaver never absorbs water, rots, cracks or warps.
- **Unmatched Warranty:** Backed by the industry's only fully-transferable lifetime warranty.
- **Proven Durability:** Finger-jointed construction creates a perfect fit with enhanced strength.

Z-SERIES ADJUSTABLE INSWING SILLS (ZAI) WITH SEALING GASKETS

ZAI uses an innovative design of all synthetic components that are built to last, eliminating the worries of wood and ending callbacks.

- **Built to Last:** Waterproof, all-composite substrate won't rack, warp or rot, ever.
- **High Dam, Integrated Seal:** Innovative cap design overlaps at the dam to provide a barrier against air and moisture, even in the most extreme weather conditions.
- **Sealed Adjustment Screws:** Sealing plugs hide unsightly screws and keep water and dirt away from the adjustment mechanism, maintaining adjustability of the sill cap over time.

ULTIMATE PUSH BUTTON ASTRAGAL

The Ultimate Push Button Astragal delivers enhanced sealing power and added built-in security in a solution that's easier to use, operating with the simple push of a button.

- **Dual-Push Operation:** Each Spring-loaded Bolt automatically engages with the simple push of a button and conveniently retracts with one easy motion.
- **Easy Hardware Customization:** 4-way adjustable strike retainers feature Snap-n-Size™ functionality and can be easily removed, resized and repositioned without additional cutting tools.
- **Extended Sealing Power:** Spring-loaded Floating Boot, Simple Solution® Corner Pad and weatherstrip, plus full-length Sealing Fin.

DOUBLE BULB (WITH FIN) DOOR BOTTOM

Double Bulb Door Bottoms offer a superior barrier against water, air, and dirt with the protection of two flexible sealing bulbs. The Leading Edge Bulb design provides a continuous seal along the sill cap, creating maximum contact between the door and the sill.

- **Resilient Material:** Always keeps its shape.
- **Minimal Tools Required:** The kerfed feature is convenient and easy to install.
- **Secure Sealing:** Provides stability on the door panel while also delivering a proper seal to your home.



LEVEL 3: UNMATCHED SECURITY & PERFORMANCE.

- ▶ Fiberglass or Wood Door Panels
- ▶ Z-Series Adjustable Inswing Sills (ZAI) with sealing gaskets
- ▶ Trilennium® Multi-Point Locking System
- ▶ Ultimate Trilennium Astragal
- ▶ Primed FrameSaver® Rot-Proof Door Frames
- ▶ Double Bulb (with fin) Door Bottom

PRIMED FRAMESAVER ROT-PROOF DOOR FRAMES

FrameSaver combines the performance of composite and the strength of wood in one framing solution.

- **Rot Proof For Life:** FrameSaver never absorbs water, rots, cracks or warps.
- **Unmatched Warranty:** Backed by the industry's only fully-transferable lifetime warranty.
- **Proven Durability:** Finger-jointed construction creates a perfect fit with enhanced strength.



Z-SERIES ADJUSTABLE INSWING SILLS (ZAI) WITH SEALING GASKETS

ZAI uses an innovative design of all synthetic components that are built to last, eliminating the worries of wood and ending callbacks.

- **Built to Last:** Waterproof, all-composite substrate won't rack, warp or rot, ever.
- **High Dam, Integrated Seal:** Innovative cap design overlaps at the dam to provide a barrier against air and moisture, even in the most extreme weather conditions.
- **Sealed Adjustment Screws:** Sealing plugs hide unsightly screws and keep water and dirt away from the adjustment mechanism, maintaining adjustability of the sill cap over time.



TRILENNIUM MULTI-POINT LOCKING SYSTEM*

The Trilennium Multi-Point Locking System works long after others fail, delivering 3X the strength, 3X the security and 3X the performance.

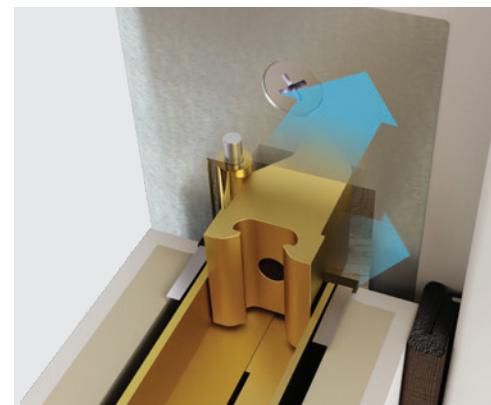
- **Unmatched Strength:** Solid I-Beam construction delivers the strength of one locking unit that even strengthens the door panel.
- **Reliable Security:** When activated, each bolt becomes a true deadbolt that cannot be compromised for ultimate protection.
- **Forgiving Performance:** Bolts pre-engage to fight deflection at all times and correct misalignment up to 3/16" in three directions.

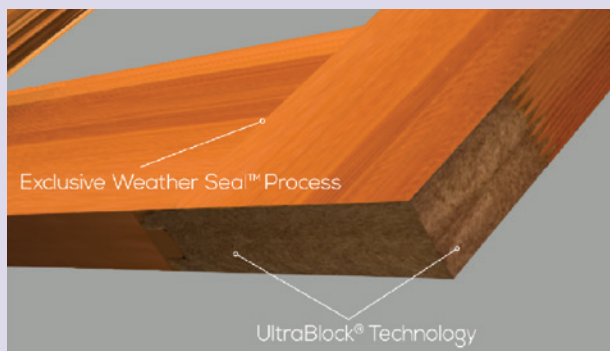


ULTIMATE TRILENNIUM ASTRAGAL

Built to complement the unmatched strength of the Trilennium Multi-Point Lock, the Ultimate Trilennium Astragal delivers ultimate French door security and protection.

- **Unmatched Multi-Point Security:** Works with the Trilennium Multi-Point Locking System's solid I-beam construction and three full deadbolts to deliver a high security system that cannot be matched.
- **No Deflection:** Trilennium bolts pre-engage even when the door is unlocked, fighting deflection at all times. Once locked, bolts work with the astragal's unique strike plates to pull both doors into perfect alignment.





Simpson®
Door Company

WHAT IS ULTRABLOCK® TECHNOLOGY BY SIMPSON?

STANDARD ON ALL DOORS IN STOCK.

- Composite block material finger-jointed into the bottom of the stiles eliminating water infiltration.
- Weather Seal™ process at stile and rail joints further protects against water infiltration.
- Standard on all in stock doors and available for any 1-3/4" and 2-1/4" thick special order or custom doors.
- Five-year warranty

THE REAL WORLD IS NEVER PERFECT.

Testing at Endura goes beyond the basic requirements. We think of real-world problems our industry faces every day, and create tests to ensure that our products are up for the challenge while outperforming all others.

Are you and your customers throwing money out the door? When the real-world strikes Z-AC™ never stops working for you (and your wallet), eliminating callbacks, and saving you time and money. Calculate your true costs and see how much Z-AC can save with the interactive Z-AC web app from Endura.

www.ZACSAVES.com



WATER TIGHT
During water testing, we use our on-site testing wall to simulate a storm with rainfall at a rate of 8 inches per hour and gusts of wind up to 60 mph.



400 POUNDS
Z-AC has been tested and proven appliance proof, withstanding up to 400 lbs. in our unique rollover testing. Roll it over Z-AC without fear or damage.



FEATHER LIGHT
Delivering the industry's lowest closing force, Z-AC has been tested to stand strong in severe weather while still being easy to use.



25,000X
During cycle testing, Z-AC undergoes 25,000 cycles of full open-and-close door operation, ensuring reliable, lasting performance you can count on.



Dyke Industries, Inc.

www.dykeind.com

Dyke Industries, Inc.

4038 Raines Rd, East

Memphis, TN 38118

901-362-6260



www.enduraproducts.com

Innovation protected under patents & patents pending in U.S. and Canada. See www.EnduraPatents.com.