



Millennium Xtra

Millennium ATMA setup and configuration guide

May 16 2017

Millennium Group, Inc.

16 Tech Circle
Natick, MA 01760
P: 508-655-1340
F: 508-651-2902

Millennium ATMA setup and configuration guide

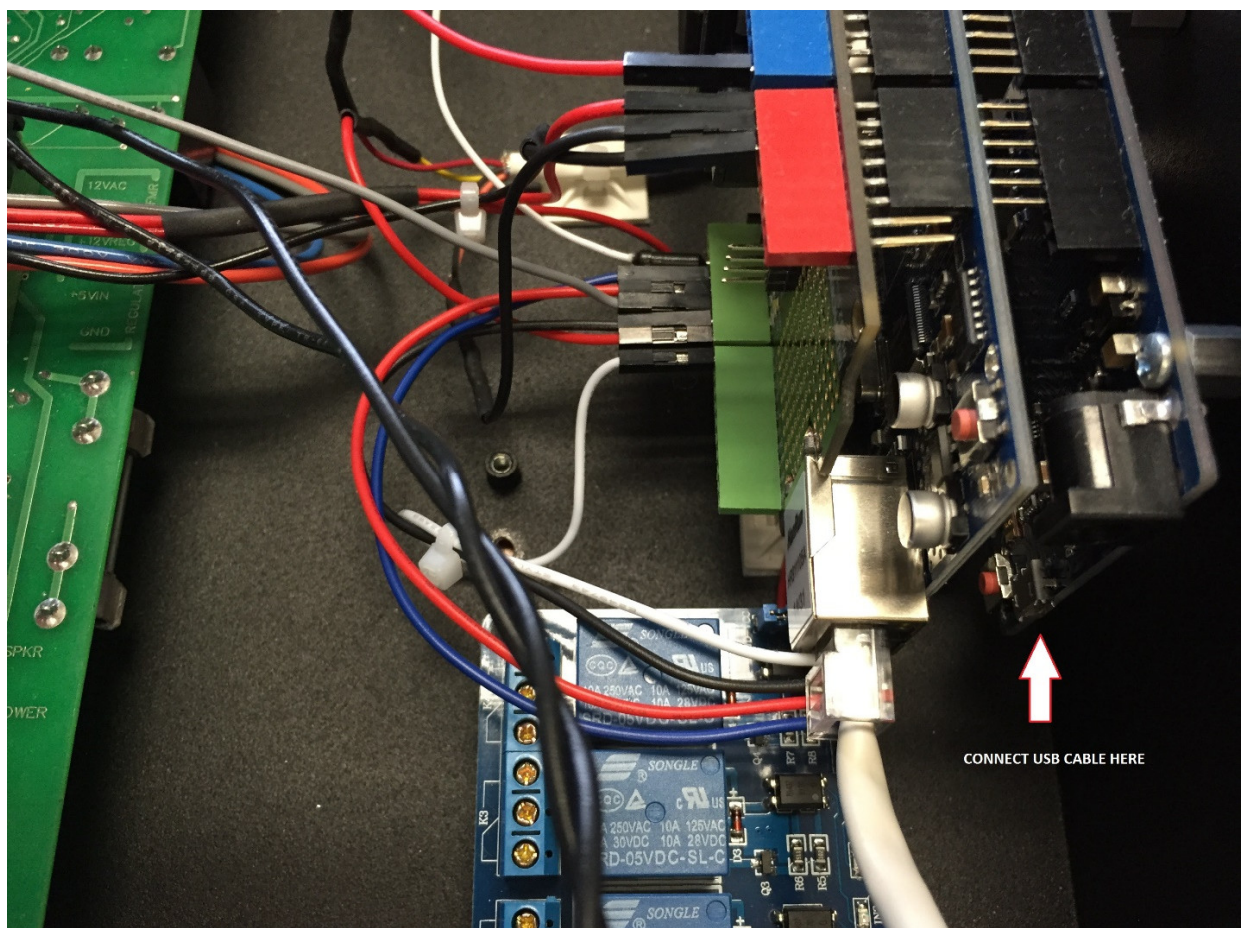
Introduction

The Millennium ATMA product includes ATMA device and software package. The software package includes Atma Link Configurator program and ATMA program.

ATMA device installation

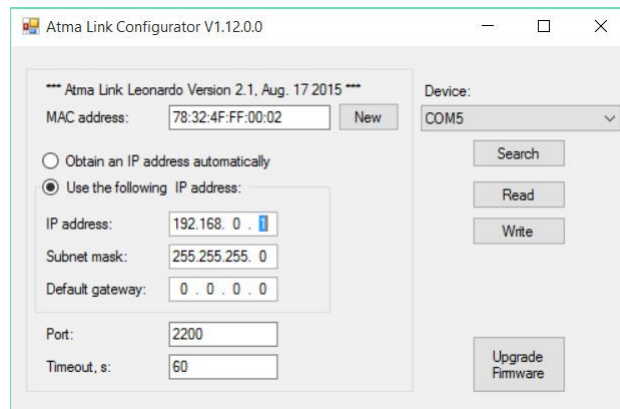
Step 1. Network settings configuration

Connect ATMA board to the computer via USB connector (the board should not be connected to the power supply) (Picture 1). Copy all files from installation CD to your computer. Run AtmaLinkCfg.exe file from ATMA_Config folder.



Picture 1.

If the board connected to the computer correctly you should see following picture (Picture 2).

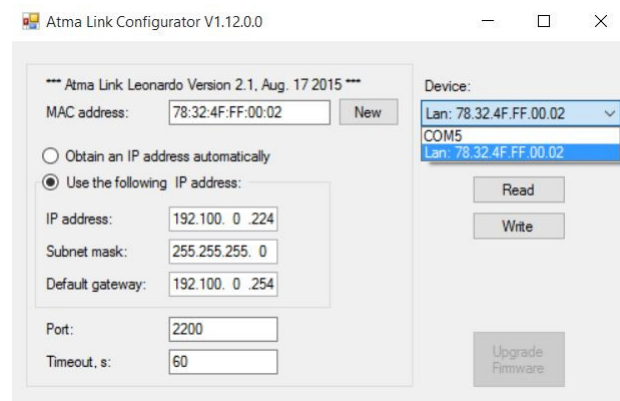


Picture 2.

Now you can update the board IP address, subnet mask and gateway for your network.

After you process the network configuration update, press “Write” button.

To check the configuration press “Search” button and in the device list you should see the network interface (see Picture 3).



Picture 3.

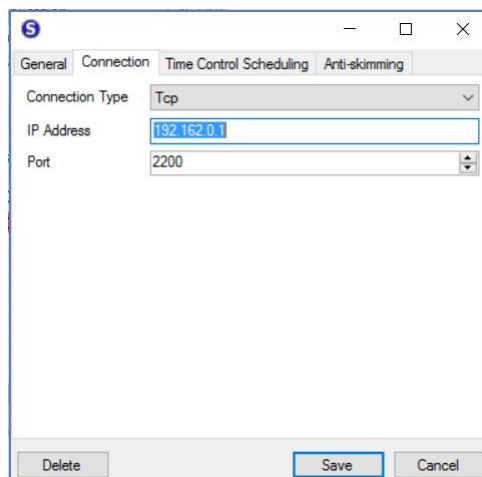
Step 2. ATMA configuration

The ATMA software by default has one test site created (for debug proposes). To create a second site you need to apply a license, but you can configure the test site parameters (without a license you can't add more than 10 cards to the ATMA card database).

To communicate with the ATMA board you need to change the site connection type. To edit the site parameters run ATMA software, process the login (default login/password is admin/admin), select the site, press right mouse button and select “Edit” (or press F2

button).

To update the site connection type you need to select “Connection” tab, select the connection type to “Tcp” and configure correct IP address and the port number (2200 is the default port number), see Picture 4.



Picture 4.

To configure Anti-skimming parameters select “Anti-skimming” tab. ATMA can generate following alarms:

1. Cut Cable Alarm – generates if the ATMA signal cable was cut
2. Low Light Level Alarm – generates if the lighting level will be below than configured level
3. Card Is Not Inserted Alarm – generates when the card was not inserted up to the end point to the reader
4. Skimmer Detected Alarm – generates when the skimmer is detected by the skimmer detection algorithm

With this tab you can configure following parameters:

1. Alarm Condition Present – how long the ATMA should have the “skimmer detected” condition before fire the Skimmer Detected Alarm. This parameter can be changed from 1 min to 30 min. Default value is 15 min.
2. Skimmer Detected Light Level – the light level when the skimmer detection condition will be enabled. This parameter can be changed from 0 to 1023 lighting units. Default value is 30, but it should be adjusted to the ATM light condition.
3. Ambient Light Alarm threshold – the light level when the Low Light Level Alarm will be enabled.
4. Ambient Light Alarm Reset threshold – the light level when the Low Light Level Alarm will be disabled.

To configure the skimmer detection parameters press “Advanced” button.

The advanced parameters includes:

1. Average Light Measurement interval (min) – for how many minutes the average light level will be calculated. This parameter can be changed from 1 to 300 min. Default value – 200.
2. Skimmer Detected Light Measurement interval (sec) – time interval for the skimmer detection light level calculation. This parameter can be changed from 1 sec to 180 sec. Default value – 120.
3. Night Detected Light threshold – to how many light units the light level should have for “night condition detection”. This parameter can be changed from 0 to 1018. Default value – 200, but should be adjusted for the ATM light condition

After the ATMA parameter(s) was changed the site should be updated by pressing “Update Site” button.

To check the current parameters and the site condition need double press to the site record, see picture 5.

The screenshot shows a window titled "Site Emulation" with a close button (X) in the top right corner. The window is divided into several sections:

- Connection:** Online
- General information:**
 - Location Name: **Site Emulation**
 - Area Code: -
 - Relay Time: **2**
 - Auxiliary Relay Time: **5**
 - Door Ajar Delay Time: **10**
 - Reader Enabled: **True**
 - Schedule: -
 - Holidays: **Federal Holidays**
 - Date of Last Update: -
 - Time Zone: **Eastern Standard Time**
- Status:** (with a Refresh link)
 - Controller Status: **High Level Door Locked**
 - Ajar Status: **Secure**
 - Firmware Version: **1.2.3**
 - Firmware Release: **12/31/2015**
 - Controller Clock: **8/18/2015 7:36:22 PM**
 - Last Valid Card Read: **8/17/2015 6:36:19 PM**
- Database:** (with links for Acquire Database and Compare Cards)
 - Total Cards: -
 - Oldest Holiday Date: -
 - Newest Holiday Date: -
 - Schedule Items: -
- Anti-skimming:** (with an Acquire Config link)
 - Measures per minute: **30 measure/min**
 - Speed filter: **9037 sec**
 - Light filter: **1507 min**
 - Dark threshold: **5**
 - Light threshold: **6**
 - Day threshold: **100**
 - Alarm timeout: **1 min**
 - Low Level Light Off threshold: **500**
 - Low Level Light On threshold: **200**
- Current Value:** (with an Acquire Status link)
 - Current Value: **30**
 - Speed filter: **-14460**
 - Light filter: **10**
 - Current Threshold: **-7230**
 - Dark Timer: **55**
 - Is dark: **True**
 - Alarms: **Skimmer, Card, Cable, Light**
 - Pins: **LR, UR, RI, CR**

Picture 5.

To see the site communication log select the site, click right button and select “Log” menu item or press F12 key.

Output relays

Anti-skimming ATMA board has 4 output relays:

1. Relay 1 – Low Light Level Alarm relay
2. Relay 2 – Door Relay 1 (duplicates ATMA board relay 1)
3. Relay 3 – Cut Cable Alarm relay
4. Relay 4 – Skimmer Detected Alarm relay and Card Is Not Inserted Alarm

Step 3. Apply a license

To apply a license to the ATMA software go to Help -> License and send the Site Code and the sale order information to Millennium Group, Inc. (support@millennium-groupinc.com). Copy the Site Key received from Millennium Group, Inc. to Site Key field and press “Authorize” button.

APPENDIX 1.

Default values:

1. Alarm Condition Present(min) – 15 min.
2. Skimmer Detected Light Level(units) –30
3. Ambient Light Alarm threshold(units) – 0
4. Ambient Light Alarm Reset threshold(units) – 100

5. Average Light Measurement interval (min) – 200 min
6. Skimmer Detected Light Measurement interval (sec) – 120 sec
7. Night Detected Light threshold(units) – 200