

How to restore database backup in Millennium Xtra system

To restore database backup login to the system and go to System Administration -> Database Functions.

The screenshot displays the Millennium Xtra System Administration interface. The top navigation bar includes 'System Administration', 'Cardholder Data', 'Event Monitoring', 'Hardware Configuration', 'System Configuration', 'Reports', 'Historical Log', and 'Maps'. The 'System Administration' menu is expanded, showing 'Database Functions' as the selected option. The main content area is titled 'Import Cardholder Data' and contains the following sections:

- DATA SOURCE**
 - Data Source File (Zip archive or file):
 - Image Source File (Zip archive):
 - Sign Source File (Zip archive):
- SELECTED IMPORT FILE FORMAT**
 - Comma delimited
 - Tab delimited
 - Excel file
 - XML
 - ADO.NET Dataset
- FIELD HEADERS**
 - Field headers are included in file

At the bottom of the form are two buttons: 'Send' and 'Help'.

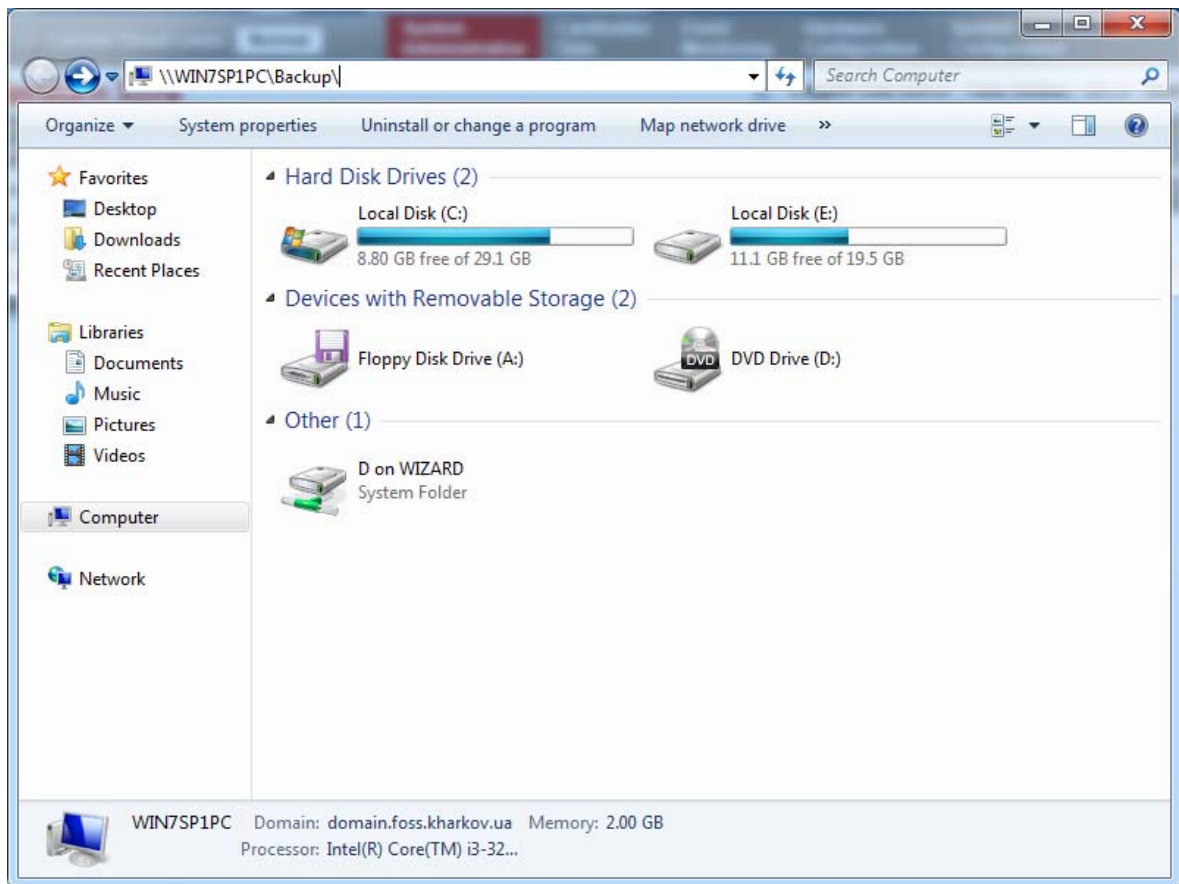
©2000–2013 Millennium Group, Inc. [Change Password](#) - [Company Info](#) - [Privacy Policy](#) - [Open in Separate Window](#)

If you received file with backup from technical support then you'll need to put it in right folder. To find out what folder set as backup folder select "Backup Settings" in left menu. Path in "Backup Folder" is the path to folder where backups stored.

Note: Typically path on local machine is C:\Program Files\MillenniumGroup\MillenniumXtra\WebSiteComponent\Backup

The screenshot displays the Millennium Xtra System Administration web interface. The top navigation bar includes 'Current Threat Level: Normal', 'System Administration', 'Cardholder Data', 'Event Monitoring', 'Hardware Configuration', 'System Configuration', 'Reports', 'Historical Log', and 'Maps'. The user is logged in as 'admin' with 'Time Online: 00:18' and 'Base Online: 17:47'. The 'Database Functions' menu is active, showing options like 'Import Cardholders Data', 'Export Cardholders Data', 'Database Backup Schedule', and 'Restore Database'. The 'Backup Settings' page is open, featuring a 'BACKUP FOLDER' field containing the path '\\WIN7SP1PC\Backup\'. Below this are 'BACKUP IMAGE SETTINGS' with checkboxes for 'Process backup without cardholder images' and 'Process backup without floor map images'. The 'HISTORICAL LOG TIME LIMIT' section includes a checkbox for 'Delete Log Entries after:' followed by input fields for '0' months and '0' days. At the bottom of the settings area are 'Save', 'Cancel', and 'Help' buttons. The footer shows 'javascript:void(0); hium Group, Inc.' and links for 'Change Password', 'Company Info', 'Privacy Policy', and 'Open in Separate Window'.

Copy this path to clipboard, open My Computer and paste path to address bar. Hit enter to go to the folder.

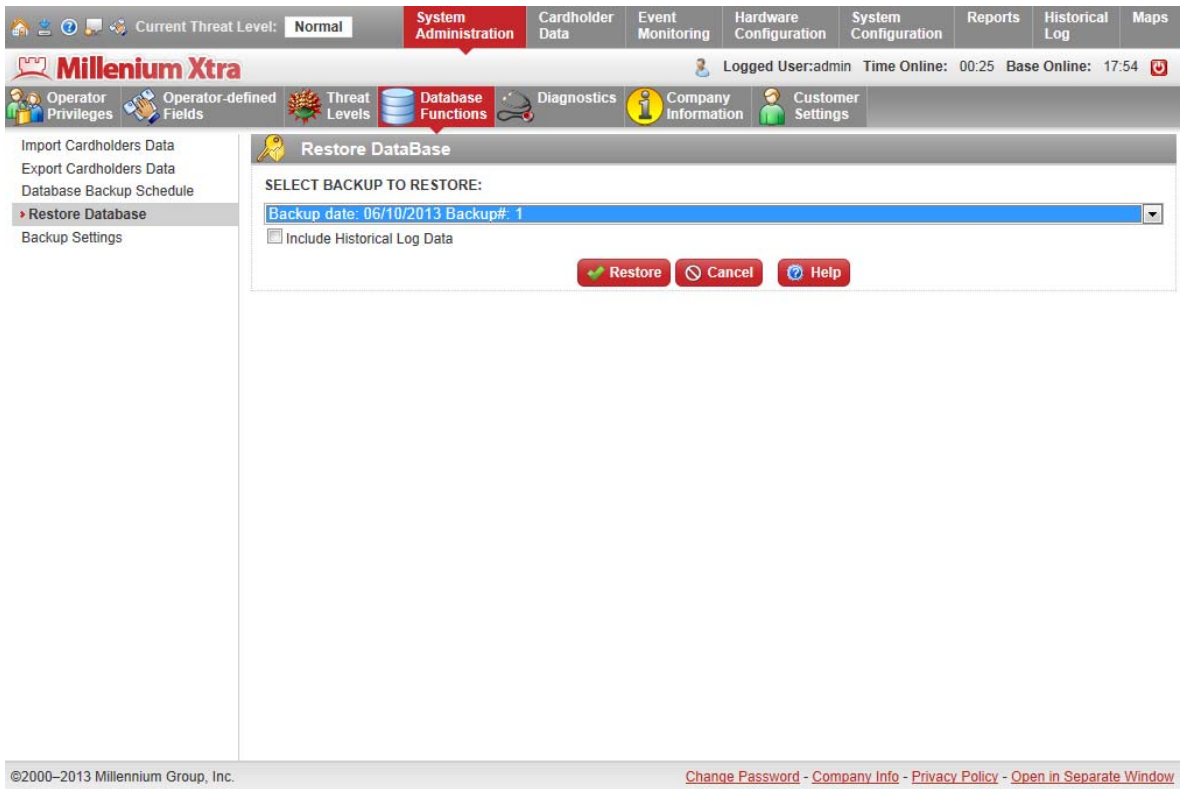


Copy database backup file received from technical support in this folder.

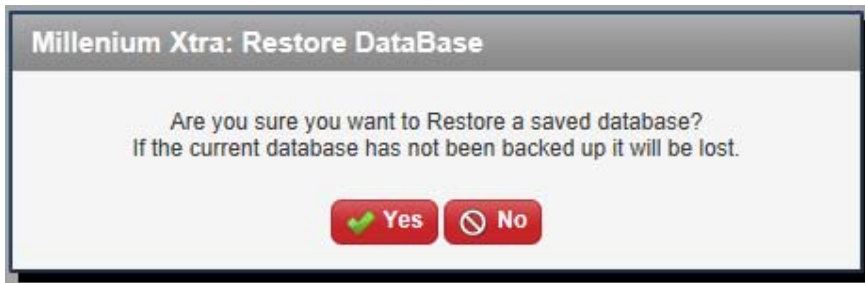
Go back to Millennium.

On the left menu select "Restore database". Select backup to restore from dropdown list.

Note: Name of backup file includes date of backup. This date will be displayed in dropdown list with backups.



Click “Restore” and confirm restoring by clicking “Yes”.



After restore complete system will display message:

