



Millennium Xtra - DMP Interface Integration Guide

Introduction

1.1 Purpose

This document reviews the interface between the DMP intrusion detection system Model DMP XR 500 and Millennium Xtra software integration.

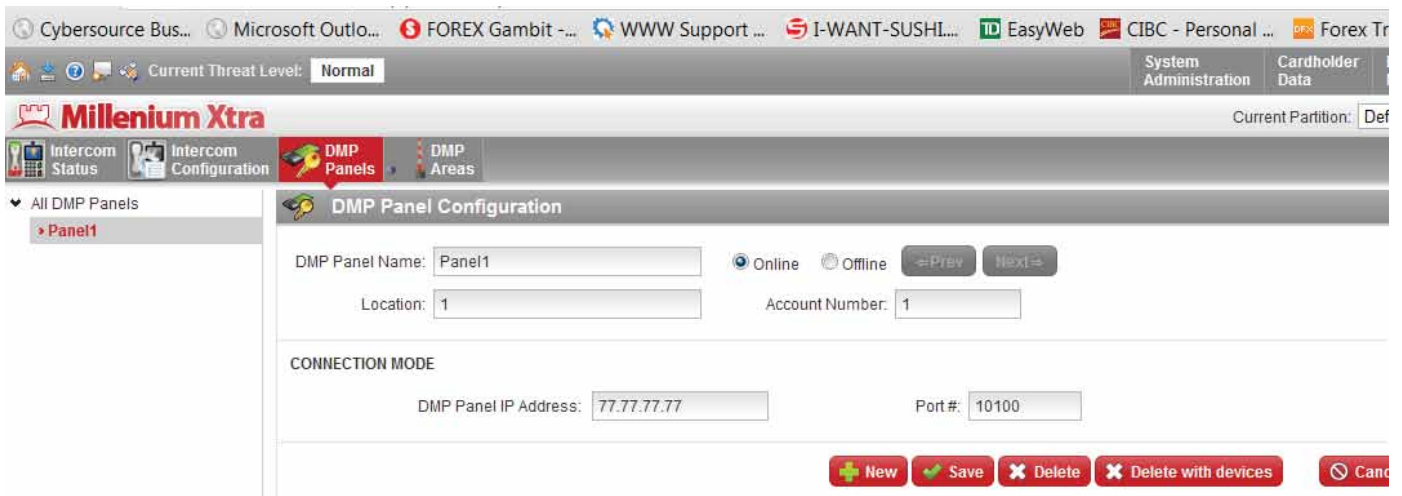
System Features

2.1 Integrated functionality

The DMP/Millennium Xtra integration software allows to operator add DMP board information to the system, read area configuration from the board to Millennium Xtra software, assign enter/exit readers to the DMP areas and assign cardholder groups to the enter/exit readers. Additionally Millennium Xtra software receives events from DMP board, displays the events to operators and log to the historical log files.

2.2 DMP board configuration

To add DMP board to the system operator should go to "External Systems" -> DMP Panels page, press "New" button, fill the board information and press "Save".



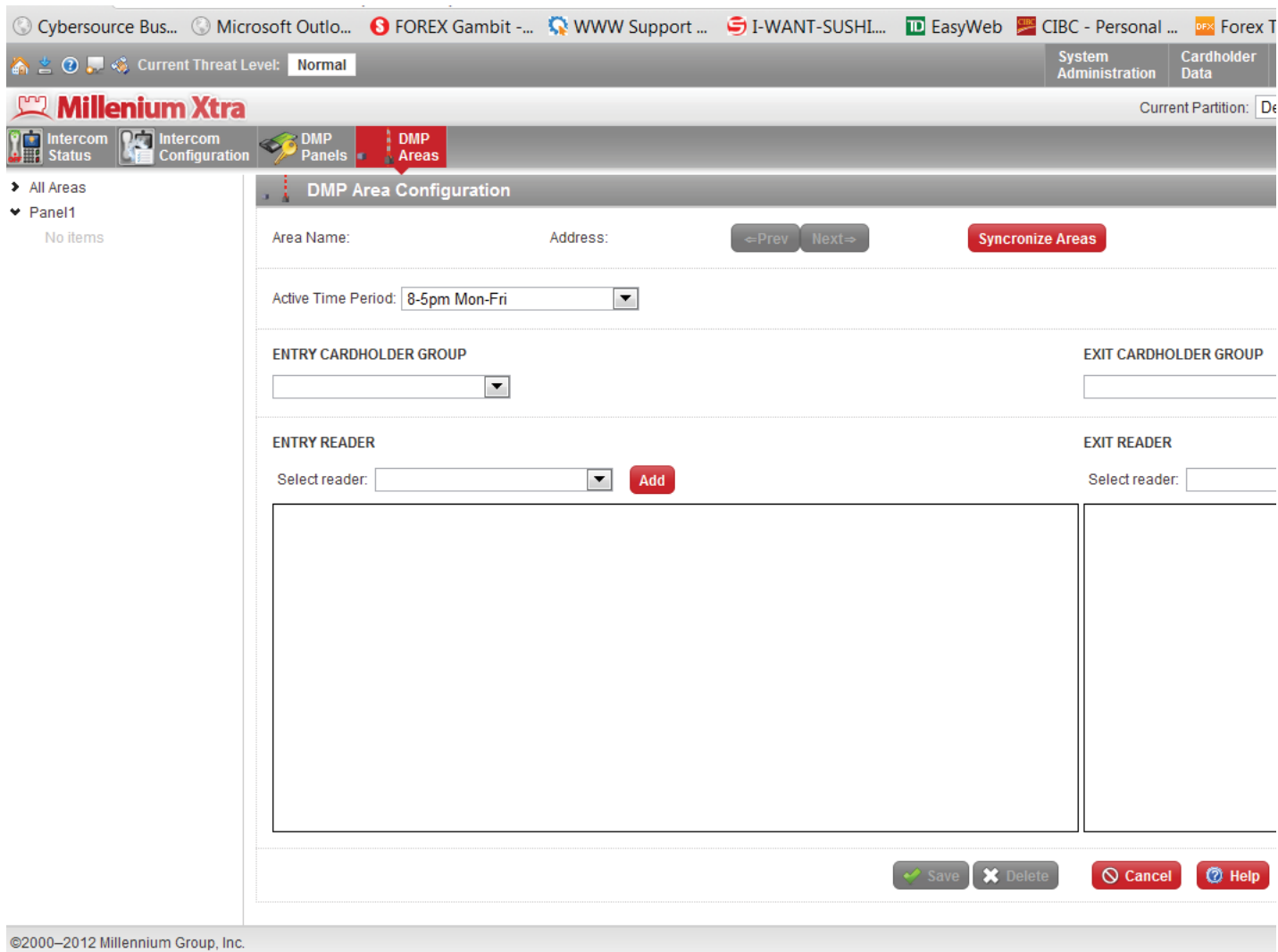
The screenshot shows the Millennium Xtra web interface for DMP Panel Configuration. The browser tabs include Cybersource Bus..., Microsoft Outlo..., FOREX Gambit..., WWW Support..., I-WANT-SUSHI..., EasyWeb, CIBC - Personal..., and Forex Tr. The current threat level is Normal. The interface includes a navigation menu with Intercom Status, Intercom Configuration, DMP Panels, and DMP Areas. The DMP Panel Configuration form contains the following fields and controls:

- DMP Panel Name: Panel1
- Location: 1
- Account Number: 1
- CONNECTION MODE: DMP Panel IP Address: 77.77.77.77, Port #: 10100
- Buttons: Online (selected), Offline, Prev, Next, New, Save, Delete, Delete with devices, Cancel.

Introduction

2.2 DMP board configuration (continued)

Operator should then go to “DMP Areas” page, select the board in the left menu and press “Synchronize Areas” button.



All areas configured for this board should be added to the left side list automatically. After that operator can select the area and assign active time period, enter/exit readers and cardholders groups to the area.