

Ver. 20150930

PRODUCT

CATALOG

Shenzhen Office

Shenzhen Guang Lian Zhi Tong
Technologies Ltd.
Room 1102 Baoyuanhuafeng Building,
288 Xixiang Avenue, Baoan, Shenzhen

+86 0755-86606126

Hong Kong Office

GL Tech (HK) Ltd.
210D Enterprise Place,
Hong Kong Science Park,
Hong Kong

service@gl-inet.com



WIFI ROUTER SERIES

GL-INET-6416	01
GL-AR150	02
GL-AR300	03
GL-MT750	04
GL-MT300A	05
GL-MT300N	06
GL-MIFI	07

WIFI MODULE SERIES

GL-M9331-CORE	08
GL-M9331-PLUS	09
GL-M7620N	10
GL-MOTO-MINI	11

GL-INET 6416



- ✓ Powered by Atheros AR9331
- ✓ 150Mbps high speed
- ✓ Low power consumption
- ✓ Small, light, easy to use
- ✓ Open source platform, extendable
- ✓ IO ports reserved for function extending

CPU	Atheros9331, @400MHz
Memory/Storage	DDR1 64MB/ FLASH 16MB
Interfaces	1 WAN, 1 LAN, 1 USB2.0, 1 micro USB (power)
Frequency	2.4GHz
WAN / LAN	10 / 100Mbps
Transmission rate	150Mbps
Tx power (maximum)	18dBm
Protocol	802.11 b/g/n
External storage support	FAT32/EXFAT/EXT4/ETX3/EXT2/NTFS
Webcam support	MJPEG, YUV
DIY feature	UART, 5GPIO, 3.3V & 5V power port
Antenna	PCB antenna
Power supply	5V/1A
Power consumption	<1W
Dimension, Weight	58*58*22mm, 43g

GL-AR150

GL-AR150-EXT



- ✓ Powered by Atheros AR9331
- ✓ 150Mbps high speed
- ✓ Low power consumption
- ✓ Small, light, easy to use
- ✓ Open source platform, extendable
- ✓ IO ports reserved for function extending
- ✓ External antenna support
- ✓ Optional PoE support

CPU	Atheros9331, @400MHz
Memory	DDR1 64MB/ FLASH 16MB
Interfaces	1 WAN, 1 LAN, 1 USB2.0, 1 micro USB (power)
Frequency	2.4GHz
WAN / LAN	10 / 100Mbps
Transmission rate	150Mbps
Tx power (maximum)	18dBm
Protocol	802.11 b/g/n
External storage support	FAT32/EXFAT/EXT4/ETX3/EXT2/NTFS
Webcam support	MJPEG, YUV
DIY features	UART, 4 GPIO, 3.3V & 5V power port
External antenna	Yes, <i>optional</i>
POE Support	Yes, <i>optional</i>
Power supply	5V/1A
Power consumption	<1W
Dimension, Weight	58*58*25mm, 39g



* CE/FCC only for internal antenna version

GL-AR300



- ✓ Powered by Atheros AR9344
- ✓ 300Mbps high speed
- ✓ Max 21dBm Tx power output
- ✓ Stable for commercial scenarios
- ✓ Open source platform, extendable
- ✓ IO ports reserved for function extending
- ✓ USB and TF card support

CPU	Atheros 9344, @560MHz
Memory	DDR2 128MB/ FLASH 16MB
Interfaces	1 WAN, 4 LAN, 2 USB2.0, 1 TF Card, 1 DC (12V power)
Frequency	2.4GHz
WAN / LAN	10 / 100Mbps
Transmission rate	300Mbps
Tx power (max)	21dBm
Protocol	802.11 b/g/n
External storage support	FAT32/EXFAT/EXT4/ETX3/EXT2/NTFS
Webcam support	MJPEG, YUV
DIY features	UART, SPI, JTAG, 7GPIO, 3.3V power port
Antenna	2 omnidirectional antennae
POE support	Yes, <i>optional</i>
Power input	12V / 1.5A
Power consumption	<10W
Dimension, Weight	170*150*380mm, 280g

GL-MT750



- ✓ Powered by MTK MT7620A + MT7610E
- ✓ 750M high speed, 802.11ac
- ✓ Large RAM up to 128M
- ✓ Open source platform, extendable
- ✓ IO ports reserved for function extending

CPU	MTK MT7620A, @580MHz
Memory	DDR2 128MB/ FLASH 16MB
Interfaces	1 WAN, 4 LAN, 1 USB2.0, 1 TF Card, 1 DC (12V power)
Frequency	2.4GHz /5.8GHz
WAN / LAN	10 / 100Mbps
Transmission rate	750Mbps
Tx power (max)	20dBm
Protocol	802.11 a/b/g/n
External storage support	FAT32/EXFAT/EXT4/ETX3/EXT2/NTFS
Webcam support	MJPEG, YUV
DIY features	UART, JTAG, I2S, 3.3V &5V power port
Antenna	2 dual-band antennae
POE support	Yes, <i>optional</i>
Power input	12V / 1.5A
Power consumption	<10W
Dimension, Weight	170*150*380mm, 280g

GL-MT300A



GL-MT300A-EXT



- ✓ Powered by MTK MT7620A
- ✓ 300Mbps high speed
- ✓ Large RAM up to 128M
- ✓ Small, light, easy to use
- ✓ Open source platform, extendable
- ✓ IO ports reserved for function extending
- ✓ External antenna support

CPU	MTK MT7620A, @580MHz
Memory	DDR2 128MB/ FLASH 16MB
Interfaces	1 WAN, 1 LAN, 1 USB2.0, 1 micro USB (power)
Frequency	2.4GHz
Transmission rate	300Mbps
WAN / LAN	10 / 100Mbps
Tx power (max)	20dBm
Protocol	802.11 b/g/n
External storage support	FAT32/EXFAT/EXT4/EXT3/EXT2/NTFS
Webcam support	MJPEG, YUV
DIY features	UART, TF Card interface, 3.3V & 5V power port
External antenna	Yes, <i>optional</i>
POE support	No
Power input	5V / 1A
Power consumption	<3W
Dimension, Weight	58*58*25mm, 39g (without external antenna)

GL-MT300N



GL-MY300N-EXT



- ✓ Powered by MTK MT7620N
- ✓ 300Mbps high speed
- ✓ Small, light, easy to use
- ✓ Open source platform, extendable
- ✓ IO ports reserved for function extending
- ✓ External antenna support
- ✓ Optional PoE support

CPU	MTK MT7620, @580MHz
Memory	DDR2 64MB/ FLASH 16MB
Interfaces	1 WAN, 1 LAN, 1 USB2.0, 1 micro USB (power)
Frequency	2.4GHz
Transmission rate	300Mbps
WAN / LAN	10 / 100Mbps
Tx power (max)	20dBm
Protocol	802.11 b/g/n
External storage support	FAT32/EXFAT/EXT4/ETX3/EXT2/NTFS
Webcam support	MJPEG, YUV
DIY features	UART, 4 GPIO, 3.3V & 5V power port
Extendible antenna	Yes, <i>optional</i>
Extendible POE	Yes, <i>optional</i>
Power supply	5V/1A
Power consumption	<2W
Dimension, Weight	58*58*25mm, 39g (without external antenna)

GL-MIFI



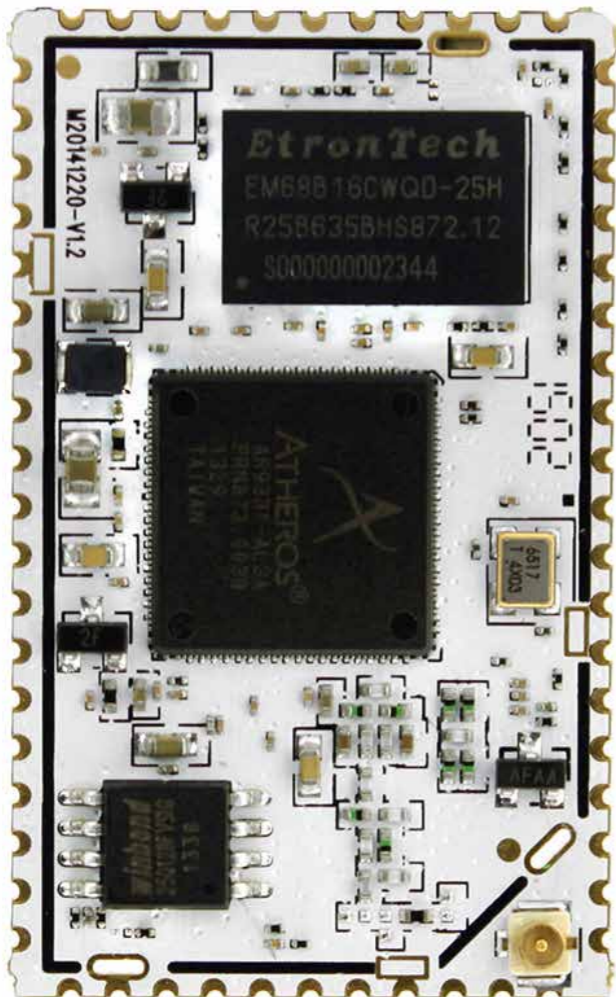
- ✓ Powered by Atheros AR9331
- ✓ 150Mbps Wi-Fi, 4G LTE
- ✓ Small, light, easy to use
- ✓ Open source platform, extendable
- ✓ External antenna support

CPU	Atheros AR9331, @400MHz
Memory/Storage	DDR2 64MB/ FLASH 16MB
Interfaces	1 SIM card slot, 1TF Card slot, 1 USB2.0, 1 micro USB (power)
LTE Transmission rate	UL 50Mbps / DL 150Mbps
WiFi Transmission rate	150Mbps
Tx power (max)	18dBm
Protocol	802.11 b/g/n 150Mbps
Battery capacity	5000mAh
Input	5V/1A
Output	5V /1A
Dimension, Weight	120*60*15mm, 130g

APPLICATIONS

The 3G/4G MiFi module supports OpenWrt Linux system with extremely expandable capabilities. It can be used in cars, portable 4G MiFi devices and home or industrial 4G applications.

GL-M9331-CORE



- ✓ Powered by Atheros AR9331
- ✓ 150Mbps Wi-Fi
- ✓ Small, light, easy to use
- ✓ Open source platform, extenable
- ✓ External antenna support

CPU	Atheros AR9331, @400MHz
Memory/Storage	DDR2 64MB/ FLASH 16MB
Protocol	802.11 b/g/n 150Mbps (max)
Tx power (max)	18dBm
Power supply	3.3V
Power consumption	≤ 300mW
Dimension, Weight	41*25*5mm, 6g

APPLICATIONS

GL-M9331-Core (aka Domino Core) can be used in wireless routers, Wi-Fi serial converter, Wi-Fi controller, industrial automation and Wi-Fi speakers etc.
More information, please refer to <http://domino.io>

GL-M9331-PLUS



High power Wi-Fi Module

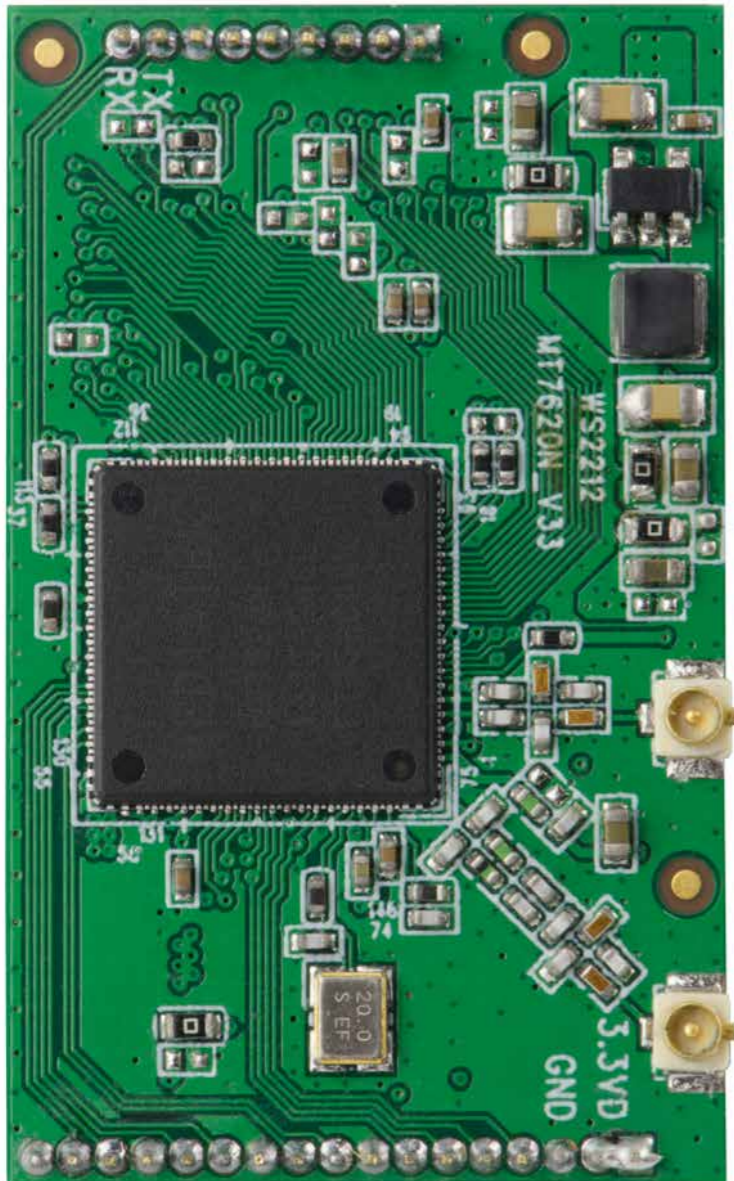
- ✓ Powered by Atheros AR9331
- ✓ With power amplifier max 20dBm output
- ✓ Complete interfaces
- ✓ 2.00mm headers

CPU	Atheros9331, @400MHz
Memory	DDR2 64MB/ FLASH 16MB
Interfaces	1 WAN, 1LAN, 1 USB, I2S, UART, GPIO, LED, RESET
Tx power (max)	20dBm
Protocol	802.11 b/g/n 150Mbps (max)
Antenna	IPEX interface External Antenna
Power supply	5V/1A
Power consumption	≤ 750mW
Dimension, Weight	40*25*12mm, 10g

APPLICATIONS

GL-M9331-Plus is a high power Wi-Fi module. It can be used in Wi-Fi controller for R/C cars and robots, Wi-Fi scale, Wi-Fi speakers, IP cameras, Wi-Fi serial converter or other IoT applications.

GL-M7620N



Powerful Wi-Fi Module

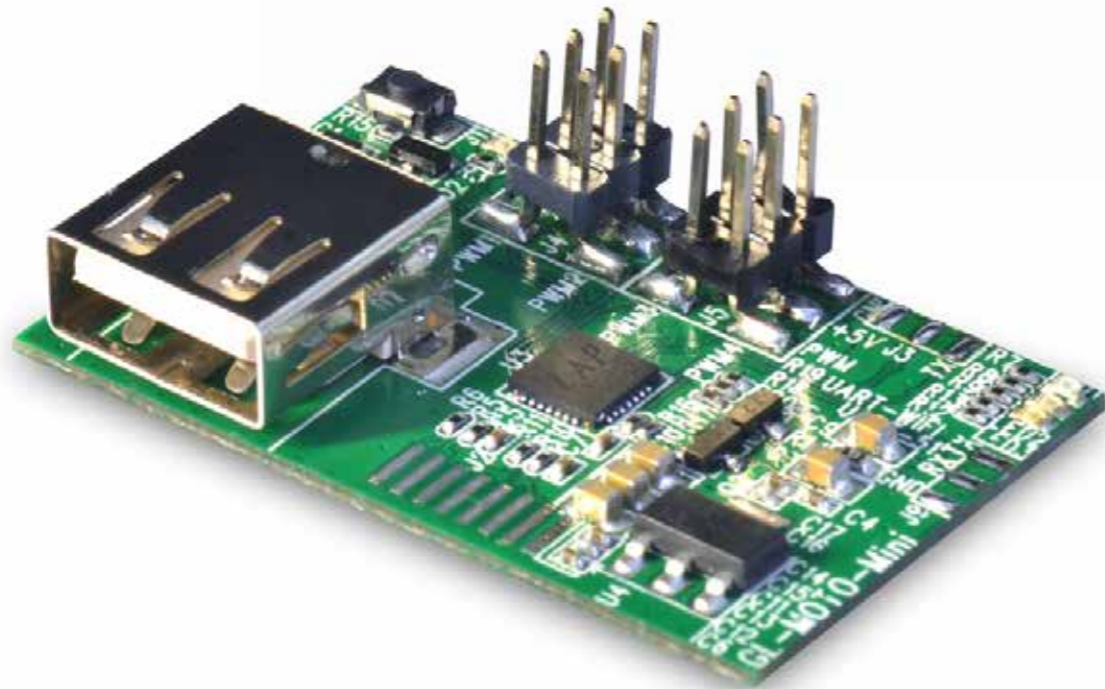
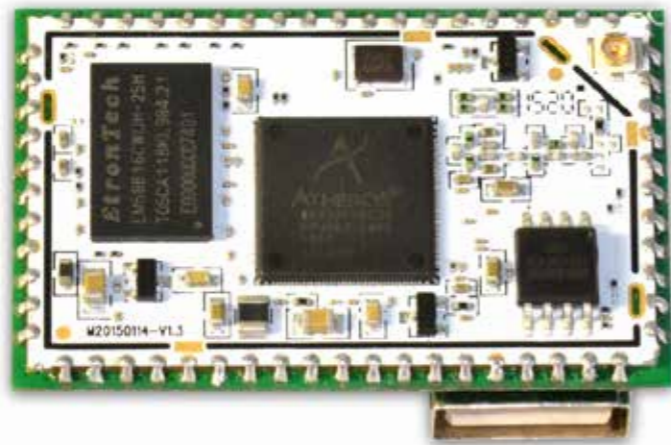
- ✓ Powered by MTK 7620N
- ✓ Strong signal max 20dBm output
- ✓ Complete interfaces

CPU	MTK 7620N, @580MHz
Memory/Storage	DDR2 64MB/ FLASH 16MB
Interfaces	1 WAN, 1LAN, 1 USB, I2S, UART, GPIO, LED, RESET
Tx power (maximum)	20dBm
Protocol	802.11 b/g/n , 300Mbps (max)
Antenna	IPEX interface External Antenna
Power supply	5V/1A
Power consumption	≤ 750mW
Dimension, Weight	40*25*12mm, 10g

APPLICATIONS

GL-M7620N high power Wi-Fi module can be widely used in Wi-Fi controller for R/C cars and robots, Wi-Fi scale, Wi-Fi speakers, IP cameras, Wi-Fi serial converter or other IoT applications.

GL-MOTO-MINI



Wi-Fi Control Solution With Video streaming

- ✓ Powered by Atheros AR9331
- ✓ USB2.0, 4PWMs provided, ethernet pinout, UART pinout
- ✓ IOS and Android App
- ✓ Open source

CPU	Atheros AR9331, @400MHz
MCU	IAP15W413AS
Memory	DDR2 64M / FLASH 16M
Interfaces	1 WAN, 1 USB, 4 PWM, 2 UART
Frequency	2.4GHz
Protocol	802.11 b/g/n , 150Mbps (max)
Tx power (max)	18dBm
Distance	50~100m
Webcam support	MJPEG, YUV
Antenna	Soft antenna customized for moto control
Android app	Yes
iOS app	Yes
Power supply	5V/1A
Power consumption	≤ 750mW
Dimension, Weight	43*28*25mm, 15g



gl-inet.com