



April 14, 2017

The Honorable Brenda Jones, President
Detroit City Council
Coleman A. Young Municipal Activity Center
13th Floor
Detroit, Michigan 48226

Subject: Quarterly Report, Detroit Land Bank Authority

Dear Council President Jones:

On behalf of the Detroit Land Bank Authority (DLBA), I am pleased to submit this report of activities for the most recent three month period.

During the first quarter of 2017, the DLBA continued having an impact on Detroit's neighborhoods. The demolition program is ramping up for a busy spring and summer. Currently over 4,000 properties are in the queue to be demolished. Property sales are robust, and increasing quickly. Residents continue to rehabilitate properties purchased from the DLBA, which combined with other DLBA efforts like Nuisance Abatement, Occupied Buy Back, demolition, and Side is leading to rebounding property values in Detroit neighborhoods.

The opportunity to carry out the mission of the DLBA would not be happening without the ongoing support of Detroit City Council. We thank you for the chance to partner with you on the major task we face together. We look forward to working with you to continuously improve our performance, and the quality of life for residents of Detroit.

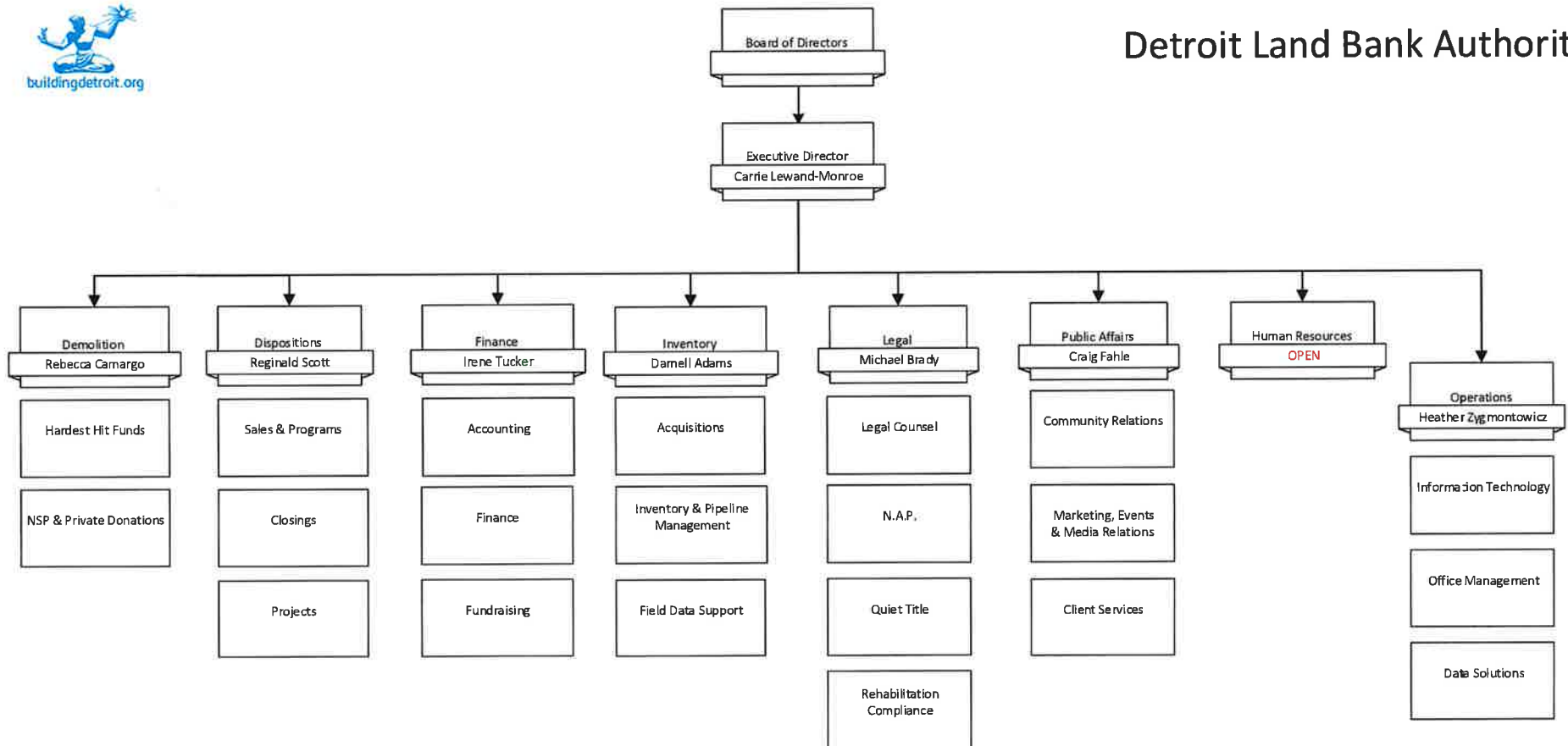
Lastly, as I prepare to leave the DLBA, I would like to personally thank you for the wonderful experience of working with City Council on this important work for the past three years. It has been remarkable, and I am proud of what we have accomplished over that time. I fully expect to work with all of you again in the coming years, and I look forward to it.

Respectfully submitted,

Carrie Lewand-Monroe
Executive Director



Detroit Land Bank Authority





Building Detroit

Inventory Department

The Inventory Department is responsible for the management of all properties while in Land Bank ownership. This includes the acquisitions of property by the DLBA, whether from private or public sources, as well as the physical maintenance of the property. The Inventory Department is responsible for the assessment and placement of inventory into “pipelines” including Demolition, Legal (Quiet Title), and Dispositions sales programs. The Inventory Department supports DLBA programs with data analysis and ability to sort and map all properties by type, location, condition and other factors. It also provides assistance to the City’s economic development efforts. Future Inventory programs may include data analysis and support to the City for land assembly, whether for Blue/Green Infrastructure projects for storm water management, economic development, or another use.

Inventory Management

As of 04/06/2017, DLBA holds title to 98,302 parcels.

	Residential Structures	Vacant Land	Commercial and Industrial Structures	Grand Total
In HHF	21,919	45,595	191	67,705
Outside HHF	11,268	19,278	51	30,597
Grand Total	33,187	64,873	242	98,302

The Inventory Department continues to receive and respond to many property maintenance requests, including weak and/or dead trees, overgrown lawns, and unsecured houses. As always, we are balancing the immense amount of requests with our current resources to handle as many resident concerns as possible. The Detroit Land Bank Authority recently put out two RFP’s – Property Maintenance & Preservation Professionals, and Tree & Stump Removal Services.

Currently, the Detroit Land Bank Authority (DLBA) continues to use normal or black colored plywood, and SecureView (plexi-glass system) as its way of securing the windows and doors on its properties. The DLBA has become very innovative in its approach with the use of plywood to ensure the most effective methods are used when securing a property. The average cost for board ups are \$35 per window and \$75 for a doorway.

Pipeline Management

Acquisition

Acquisition team staff have completed all four phases of the reconciliation property transfer with the Planning & Development Department. In January, Inventory Department staff executed the transfer of 230 parcels from P&DD, which had previously been approved by city council, but had been retained by the staff due to now-resolved title issues. Later this quarter, Inventory Department staff worked closely with colleagues in the Planning & Department and the Housing & Revitalization Department to issue corrective deeds to the City for a number of parcels that were found to be commercial in nature after being transferred to the land bank.

The acquisition team also worked closely with the Wayne County Treasurer's office to accept three transfers of unsold tax foreclosures. In January, the land bank took title to 6,670 unsold 2016 tax foreclosures. Land bank staff also completed an analysis of previous years of foreclosures, and found that since 2002, 270 parcels had been offered via the public auctions, gone unsold, but were never transferred. The Wayne County Treasurer's office confirmed ownership, and transferred all 270 parcels to the land bank on March 22, 2017. Finally, at the end of March, the acquisitions department accepted a third transfer of 225 additional parcels from the Wayne County Treasurer that had gone unsold through the 2016 foreclosure auction.

In addition to these inter-governmental transfers, Inventory Department staff remain committed to accepting donations from financial institutions and individual residents. In the first quarter of 2017, the land bank accepted donations of 44 properties through these means.

Auction

Currently, there are 481 properties in the auction pipeline that are going through the title process to ensure we have insurable title for properties sold via auction. The auction team is also regularly reviewing the auction inventory to ensure the properties are in salvageable condition. Properties sold via auction now also include a scope of work document, which outlines what rehab is needed in order to bring the property up to a basic living standard based on City of Detroit building codes (example below). Since inspection reports have been included, potential buyers have a much better idea of the scope of the rehab, and are able to make a more informed buying decision. We hope this will result in more buyers bidding within their ideal budget, being able to close on the property, and completing the rehab in a timely manner.

Detroit Land Bank Authority Property Condition Report



DISCLAIMER: THE PURCHASER UNDERSTANDS THAT THE DETROIT LAND BANK AUTHORITY ("SELLER") HAS LITTLE OR NO DIRECT KNOWLEDGE CONCERNING THE CONDITION OF THE PROPERTY. THE PURCHASER ACKNOWLEDGES AND AGREES TO ACCEPT THE PROPERTY IN "AS IS" CONDITION, INCLUDING, WITHOUT LIMITATION, ANY DEFECTS OR ENVIRONMENTAL CONDITIONS AFFECTING THE PROPERTY, WHETHER KNOWN OR UNKNOWN, WHETHER SUCH DEFICITS OR CONDITIONS WERE DISCOVERABLE THROUGH INSPECTION OR NOT.

Inspection Date:	02/01/2017
Address:	5920 Somerset
Inspector:	Hummer; Wark
Estimated Minimum Cost of Repair(s):	\$58,413.00

Permit Required?	Generally, permits are required for the following work:
Building Permit Required: Yes	<ul style="list-style-type: none"> • Roof/Window Replacement • Structural Fire Damage • Foundation Wall Repairs • Rebuilding Porches
Electrical Permit Required: Yes	<ul style="list-style-type: none"> • Service Equipment/Replacement, including conductors & service panel • Repair of and installation of new branch circuits • Repair of unapproved wiring (below joist, surface mounted, open splice)
Mechanical/Heating Permit Required: Yes	<ul style="list-style-type: none"> • Furnace/Boiler Replacement • Providing Heat to a Previously Unheated Living Space • Central Air Conditional Replacement
Plumbing Permit Required: Yes	<ul style="list-style-type: none"> • Water Heater Replacement • Supply & Waste Piping Replacement • Fixture Replacement – sink, lavatory, toilet, bathtub, laundry tub

Own It Now

With limited resources the DLBA can only make 8% of its salvageable homes available through its Auction program – the Own It Now program has ramped up to fill this large gap in the DLBA's disposition of vacant houses, and create a path to rehab and occupancy for the high volume of sales that fall outside the Auction program.

Inventory of houses:

At present, 4,676 properties are in the Own It Now inventory. 1,051 (nearly one-quarter) of these properties were acquired earlier this year in the transfer of tax-foreclosed property from the Wayne County Treasurer. The DLBA's Community Partners program pulls from this inventory for use in many of its partner projects. The Inventory team is continuing to re-examine the properties in this inventory to ensure that, in addition to being salvageable, they are *sell-able* (i.e. viable candidates for sale and rehab). 1,509 houses have been listed for sale on the Own It Now website, primarily in the past year after the program was revamped and began ramping up in March 2016.

Responding to citizen requests:

The Own It Now sales process has also allowed the DLBA to be more responsive to residents' requests to purchase DLBA-owned houses. In fact, requests to purchase and rehab DLBA-owned houses drive the Own It Now listing process; approx. 72% of the properties listed on Own It Now website so far have been listed in response to citizen requests. Anyone who requested to purchase the house is notified by the DLBA prior to the start of the sale, letting them know that the property will be available.

At this point, the turnaround time from the receipt of a purchase request to the start of the sale is less than two (2) months – *provided* that the property passes all of our sales prep checks and can be made available for sale on the Own It Now website.

Side Lots

In preparation for our pair of side lot fairs this spring, the Inventory Department added 1,096 lots to existing side lot listings, notifying 2,154 residents of their availability in the process. In an effort to expand awareness of side lot availability, the land bank also sent 41,089 postcards to residents living adjacent to existing side lot listings.



Building Detroit

Demolition Department

Demolition Department

The demolition team is working diligently with contractors to ensure the proper submission of invoices. The HHF Round 2 deadline has been extended to June 30, 2017. As of April 4, 2017, \$48,361,755.43 has been reimbursed by MSHDA with an additional \$1.638M waiting for State review and approval. All demolition work is complete under this round and final invoice processing is needed in order to close out the round.

As of January 2017, all HHF Round 3 properties have been contracted for demolition. The last few houses will come down within the next few weeks. As of April 4, 2017, \$8,717,394.78 has been reimbursed by MSHDA. The total funds allocated for this round is \$21,255,000.00

The fourth round of Hardest Hit Funds (HHF4) is providing \$41,909,646 for demolitions. We have executed 33 contracts totaling 918 properties to date. We anticipate putting approximately 1,700 additional properties out for bid in the coming weeks.

Finally, HHF Round 5 was officially opened on March 8, 2017. This round provides \$88,153,425 in funding. We expect to demolish approximately 5,500 residential structures under this Round.



Building Detroit

Disposition Department

The Disposition Department at the Detroit Land Bank Authority is comprised of the following areas

- I. Sales & Programs which includes the auction program; Direct Sales/Own-It Now and the side lot program
- II. Occupied Programs which includes the Buyback pilot program
- III. Community Partners Program
- IV. Closings

Detailed below is a description and highlights of the DLBA Disposition programs and the progress during the first quarter of the fiscal year (January 1- March 31, 2017).

Auction & Direct Sales Programs

On May 5, 2014, the Disposition team rolled out the BuildingDetroit.org auction with huge success. Beginning on May 1, 2015, the Auction program began selling three vacant homes a day. With the theme “Neighbors Wanted”, the DLBA has structured the Auction program to encourage responsible investment that will rapidly change the landscape of our neighborhoods. All successful bidders are required to bring the home up to code and occupied within six months (nine months for historic properties). Eligibility to participate is restricted to individuals who are Michigan residents, Michigan incorporated businesses and non-residents who intend to occupy the home. Additionally, individuals with any material blight violations or delinquent property taxes are not eligible to win the properties.

Between May 5, 2014 and March 31, 2017, 2181 auctions were held, 1521 deposits have been collected, and 1056 of the successful auctions have completed the closing process. Please see attachment for full breakdown of closed properties.

On March 1, 2016, **Own It Now** was introduced to the public as an enhanced auction option for buyers. This option was created in response to buyers that were interested in properties that were not of high enough quality to warrant an auction. Homes are available online for purchase until an offer is submitted, at which time a 72-hour countdown clock begins. Offers are hidden and the applicant with the highest offer who meets eligibility requirements is selected. Eligibility requirements to purchase a home through Own It Now are the same as those upheld for Auction.

Own It Now has allowed the DLBA to increase the number and variety of properties that move back into private ownership in order to stabilize neighborhoods. Just over a year later, as of March 31, 2017, there have been 845 properties sold via Own It Now.

Buy Back Pilot Program

Our records show that over 7,000 homes in our inventory are occupied. To begin addressing our occupied properties, we began an initial pilot program that provides an opportunity for an eligible occupant to purchase the DLBA home that she/he is residing in. We are starting with people that have contacted our office and informed us that they are living in one of our houses. The occupied Buy Back Pilot will allow responsible current occupants the ability to remain in their homes and help to stabilize their neighborhoods.

The applicant is eligible for the pilot if they qualify in any one of the following categories:

- a. The applicant was the most recent owner of record before the home was acquired by a public entity; or
- b. The applicant is or was the tenant of the most recent owner of record before the home was acquired by a public entity. A “tenant” for this purpose includes being an occupant of property that was formerly held by a family member of the Applicant; or
- c. The applicant is the tenant of someone who claimed to own the property; or
- d. The applicant can demonstrate that he or she has made substantial improvements to the property; or
- e. The applicant has paid for utilities in the home for at least 12 months.

The applicant will agree to all conditions in a development agreement and pay \$1,000 to the DLBA for the home and make a monthly payment of at least \$100 into a savings account for future taxes, for a minimum of twelve months or until the next tax payment is due, if that date is longer than 12 months after the closing. The occupant is required to maintain the exterior of the property, keep their water bill current and participate in quarterly “home preservation” workshops. The deed will be held in escrow until that period and will be conveyed to the occupant afterward.

As of March 31, 2017, we have 224 occupants that have completed closing and are entered into the pilot program.

Auction Discounts

Since launching in March 2015, the employee discount program has provided an opportunity for employees, retirees and their families to purchase homes and invest in the City. Qualified individuals receive up to a 50% discount on any regular DLBA auction property. Please see the chart below which highlights program participation.

Employed By	<i>Status of Applications</i>				Auctions Won
	App In process	Approved	Rejected	Grand Total	
36th District Court	17	17	8	25	2
City Council	27	27		27	3
City of Detroit	64	1270	288	1623	188
Detroit Building Authority	17	7		24	2
Detroit Economic Growth Corporation	3	4	2	9	2
Detroit Public Library	3	9	3	15	1
Detroit Zoological Society		11	1	12	1
Public Lighting Authority	4	8	1	13	0
Grand Total	91	1353	303	1748	199

Homebuyer Counseling Discount

If an interested buyer successfully completes homebuyer counseling through a certified homebuyer counseling agency they are eligible for a 20% discount through the Auction program. The goal of the homebuyer counseling discount is to provide homebuyer education via in-person workshops or on-line curricula to prepare potential borrowers for homeownership and home repair and rehabilitation. The education includes content that meets or exceeds the benchmarks of the National Industry Standards for Homebuyer Education and Counseling such as financial coaching, one-on-one homeownership advising, and information specifically tailored to DLBA's disposition programs.

Rehab Financing

The DLBA has partnered with a number of financial institutions to provide potential auction winners the opportunity to invest in the auction and utilize loans or grants to rehab the auction properties (<http://auctions.buildingdetroit.org/Financing>). In several of the auction neighborhoods, land bank sales are the first financed sales in several years.

Liberty Bank

The Liberty Bank Home Restoration and Acquisition Program (HRAP), supported by JPMorgan Chase is offering special rehab financing for homes purchased in Boston Edison, MorningSide, East English Village, Cornerstone, Southwest Detroit, Jefferson Chalmers, UDM, Marygrove, Bagley, Grandmont Rosedale, and the North End.

Through the Home and Acquisition Restoration Program, Liberty Bank is offering a new, non-traditional mortgage loan that will allow a homebuyer to finance necessary home repairs and, upon their completion, transition to a permanent mortgage. The loan loss reserve funds will allow Liberty Bank to offer flexible underwriting standards that can accommodate the unique needs of Detroit residents and neighborhoods.

To qualify, borrowers must:

- Down payment assistance of up to \$15,000
- Loan to value up to 110%
- Detroit Public School employees may qualify for up to \$20,000
- Have the income necessary to repay the loan.
- Successfully complete a housing counseling program.
- Occupy the home as primary residence.
- Comply with all auction rules.

First Merit Bank

First Merit Bank offers a special program in qualifying Wayne County neighborhoods. For qualifying buyers First Merit will provide:

- Down payment, closing cost, or renovation assistance up to \$30,000 (owner occupied homes only)
- Interest rate discount for new home purchase or refinancing of current home
- Home improvement loan with low market interest rates and no processing fees
- Homes located in qualifying neighborhoods are identified in the property description on this auction website.
- All loans subject to credit approval. Offer is limited to the extent the funds are available.
Member FDIC

Chemical Bank

Chemical Bank provides opportunities to auction buyers with various lending options. This is a great opportunity for homeownership and rebuilding the community.

- First Lien Mortgages:
 - Financing up to 96.5%
 - Up to \$271,050 loan amount for 1-unit
 - Up to \$347,000 loan amounts for 2 units
- Second Lien Mortgages:
 - 1-2 Unit loans up to \$75,000

Citizens Bank

Citizens Bank offers Community focused home improvement loans is designed especially for low-to-moderate income homeowners. This program offers homeowners with the following:

- Access to renovation financing up to \$20,000 at low fixed interest rates without an appraisal
- No fees or closing costs
- Flexible requirements based on income or census tract location
- A 90-day payment deferral option

Flagstar Bank

Flagstar Bank's New Mortgage Program will make loans - including renovation funds - available to City Employees who purchase a home in Detroit through the Detroit Land Bank Auction. Flagstar Bank will offer city workers mortgages of up to 300% the value of the house to fund renovations.

- Detroit City Employees will be eligible for 15-year, fixed-rate mortgages that can be written for up to 300% of the homes Loan to Value ratio (LTV).
- Loans Will Be Written for Up to 300% of a home's loan-to-value ratio
- Renovation Funding Included in Mortgage
- 15-year Fixed-Rate Mortgage
- Maximum loans of \$417,000

Detroit Home Mortgage (DHM)

Detroit Home Mortgage launched in February 2016 and is a first of its kind collaboration of local banks, foundation, MSHDA, and non-profits seeking to address Detroit's appraisal gap and ultimately rebuild Detroit's neighborhoods. DHM is the only mortgage that lends the amount needed to buy and fix up a home that needs renovation or to buy an already renovated home.

- Offer up to additional \$75,000 second mortgage to cover renovation costs
- Acquisition and Renovation funding included in mortgage
- 20-Year Fixed-Rate Mortgage
- Minimum FICO credit score of 640 (600 in some cases)
- Have adequate income and down payment required
- Home can be anywhere in the city of Detroit
- Must be the borrower's primary residence
- Participating banks Talmer Bank, Huntington Bank, Liberty Bank, Flagstar Bank, First Merit Bank

Compliance

The DLBA's Compliance Team enforces agreements signed by property owners who have either purchased a property from the DLBA ("Sales Compliance"), or whose property was the subject of a nuisance abatement action ("NAP Compliance"). For both Sales and NAP Compliance, property owners agree to rehabilitate the property within six (6) months and to provide regular updates to the Compliance Team documenting and verifying that progress. If a property owner is not able to achieve compliance within the initial timeframe, but has shown acceptable "proof of progress," the Compliance Team provides 90-day extensions. Also, if the property is located within a local historic district, or the property was purchased during the winter months, an automatic 90-day extension is provided.

For Sales Compliance, the compliance reporting period begins on the date of closing, when the property owner takes title to the property and obtains possession. At that same time, the property owner simultaneously executes a Reconveyance Deed that the DLBA can record in the event that the property owner fails to rehabilitate the property and meet the obligations outlined in the purchase agreement. Sales Compliance is achieved by obtaining the appropriate certificates from the City of Detroit's Building Safety Engineering Environmental Department. Once Sales Compliance is achieved, the DLBA releases its interest and destroys the Reconveyance Deed.

For NAP Compliance, the property had been identified as vacant, blighted, and a nuisance. In order to avoid or stop litigation, a property owner signs an agreement which outlines their responsibilities for rehabilitating or demolishing the property, or selling to someone who will. If the property owner fails to provide "proof of progress" on the subject property, the Compliance Team transfers the matter to attorneys for court action. NAP Compliance is achieved by showing that the property is no longer a nuisance to the residents and the neighborhood. Once NAP Compliance is achieved, the DLBA releases its lis pendens and dismisses the lawsuit.

Please refer to the next page for data related to the Compliance program. The subsequent pages have a series of before and after photos showing the success of DLBA's compliance efforts at putting properties back into productive use, and thereby achieving its mission of improving the occupancy, vibrancy, increased property values, and a better quality of life in Detroit's neighborhoods.

Compliance program data is located on the next page. The subsequent pages have a series of before and after photos showing the success of DLBA's compliance efforts at putting properties back into productive use, and thereby achieving its mission of improving the occupancy, vibrancy, increased property values, and a better quality of life in Detroit's neighborhoods.

Compliance Data

	Auction/ Own It Now (Sales)			Community Partners (Sales)			Nuisance Abatement Program (NAP)			All Programs		
	<u>Program- to-Date</u>	<u>2016</u>	<u>1st Quarte r 2017 (1/1 - 3/31)</u>	<u>Progra m-to- Date</u>	<u>2016</u>	<u>1st Quarte r 2017 (1/1 - 3/31)</u>	<u>Program- to-Date</u>	<u>2016</u>	<u>1st Quarte r 2017 (1/1 - 3/31)</u>	<u>Program- to-Date</u>	<u>2016</u>	<u>1st Quarter 2017 (1/1 - 3/31)</u>
Currently Monitored	1025	591	279	66	27	32	403	271	24	1494	889	335
Compliance Achieved	575	381	141	33	19	14	922	455	63	1530	855	218
*Failed Compliance Obligations	145	76	42	22	22	0	167	19	60	334	117	102

** Does not adjust for properties placed into a new DLBA program after re-conveyance is completed, or after judgment is taken*

On the following pages are a series of before and after photos showing the success of DLBA's compliance efforts at putting properties back into productive use, and thereby achieving its mission of improving the occupancy, vibrancy, property values, and quality of life in Detroit's neighborhoods.

Community Partnership Program

The program guides nonprofits, faith based organizations and community development organizations through the process of acquiring property through the DLBA. The program is project based, meaning the organizations present projects through their development plans. The plans assist the Community Partnership Team in identifying properties and areas that will assist the organization in its goal.

To be eligible for the program an organization must meet the following criteria.

1. Headquartered in the City of Detroit;
2. Have a federal 501(c)(3) tax exempt status;
3. Be current on its property taxes;
4. Not have any material blight violations or fines;
5. Have a letter of acknowledgment from the District Manager or City Councilperson where the organization is headquartered or its catchment area
6. Work in a defined geographic target area as agreed on by the Community Partner and the DLBA, in no case, will the project area exceed 5 square miles.

As of March 31, 2017, the Community Partner Program has sold 706 parcels. In the first quarter the Community Partner Program has sold 33 structures and 52 lots.

Noted below are some Community Partner projects that have been successful throughout the City of Detroit.

District 1:

Cross Pollination Corridor: With a mission to create an ecosystem that supports pollinators such as butterflies and bees, Cross Pollination Corridor purchased 8 lots to create a green campus that will teach residents of District 1 about the importance of pollinators in their community. They began implementing the first phase of their project in 2016, and have since received a grant to continue their vision on a larger scale.



District 2:

Lakeridge Village: Pastor Eddie Williams is leading the transformation of Fairfield and Puritan to the Lodge Service Drive. The Lakeridge Village Project consist of rehabilitation of blighted structures and making them available to members of his church. He has achieved compliance on the first rehab and is in process of rehabbing his second structure. Lakeridge Village has also purchased vacant lots on Fairfield and has hired a landscape architect to design a pocket park and community garden space.

District 3:

Georgia Street Community Collective: Georgia Street Community Collective has been beautifying lots in District 3 since 2008. Operations have grown, and the organization purchased 6 lots that they had been leasing so they can continue to make improvements to the lot and neighborhood. The organization anticipates continuing to grow their vision and mission as well as their partnership with the Community Partnership Program.

Before:



After:



District 4:

Michigan Historic Preservation Network (MHPN): The organization purchased 845 Lakewood in June 2016 and achieved full rehab compliance by December. This house sold for its asking price of \$130,000 in January 2017, which was well above the neighborhood median. We are currently identifying another property for their next rehab project in the Jefferson Chalmers Neighborhood.

Before:



After:



Yorkshire Woods Community Organization: YWCO purchased 5 lots that were recently demolished in 2015 and 2016. The organization is transforming these lots into community greenspace that includes a stage for performances and garden beds for flowers and produce. They are looking to the future and are planning their phase 2 which will include the acquisition of lots on the other side of the street to continue to grow community greenspace in Yorkshire Woods.

Before:



After:



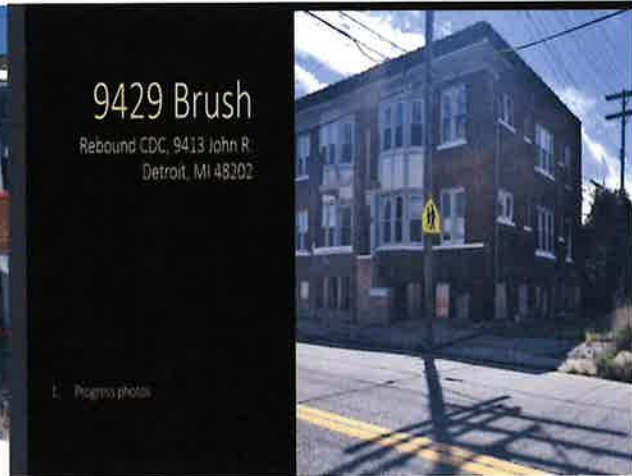
District 5:

Rebound CDC: Rebound CDC is nearing the final stages of the restoration of a previously blighted six family unit at 9429 Brush, which has been converted into housing units for seniors with and without disabilities in the North End. Rebound CDC purchased a property at 505 Westminster, which will become six affordable housing units for veterans with families. The organization is currently in compliance with the project. Additionally, Rebound CDC purchased a vacant lot behind their main site (privately purchased) for growing fresh produce for their farm to table Bistro.

Before:



Rehab in Progress



555 Gallery: The arts-based organization purchased the 555 Banner Tobacco Building and are repurposing the building as an arts studio space. The organization purchased lots adjacent to the building to turn into an outdoor art park and recently closed on a house near their campus to turn into an artist residence.





District 6:

Bridging Communities: Bridging Communities and Mosaic Community Empowerment formed a partnership to transform a blighted commercial structure on St. Lawrence into a Yemeni Cultural Center. They continue to rehab the structure and anticipate a winter 2017 completion.

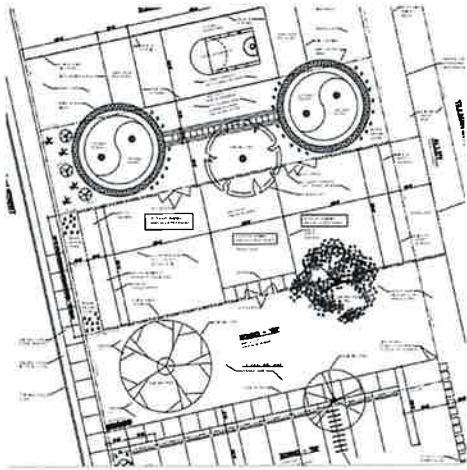
Before:



During Renovation Process



Yellow Tigers: Yellow Tigers has offered martial arts classes to youth in Detroit since 1968. Their programming outgrew their old facility and they have recently completed the rehab of a larger building on Michigan. They are transforming lots behind the building into both parking and outdoor training space and have a vision of expanding even further. Their presence has been a positive force in the neighborhood.



District 7:

Detroit Impact: Detroit Impact in collaboration with Cody Rouge Alliance and Life Remodeled took on their first rehabilitation project. They were able to achieve compliance on this property and are in the process of selling to a deserving family.

11701 Fielding

Before:



After:



Familyhood Inc: Familyhood Inc., recently won a mini grant from Detroit Future City (DFC). Their project is located directly across the street from Noble Middle School and will be used as a community outdoor learning space implementing one of the DFC greenspace designs. They also plan on having a small lemonade stand on the site.

Rehabbed & Ready

Rehabbed & Ready is a philanthropic initiative aimed to improve residential market values in the City of Detroit. Through collaboration with Quicken Loans and The Home Depot, dilapidated DLBA inventory are undergoing full rehabilitation, bringing houses to at- or above-market conditions. As a neighborhood-based initiative, there are parallel efforts in place to reduce blight via the DLBA's existing demolition and nuisance abatement programs in the Rehabbed & Ready areas. Below, find a summary of Rehabbed & Ready's progress during the 1st quarter of 2017:

- **R&R Pilot Continues.** 2017 began with 5 closings and with multiple offers being written as selling season started to warm up mid-quarter and in conjunction with the extended media coverage from *This Old House*.
- **Open Houses remain a staple in R&R program.** During Q1, the R&R team revised the open house schedule to twice weekly, to assist in cost savings. Prospective homeowners still have adequate opportunities to view R&R homes on Wednesdays and Sundays, for the entire time a home is listed for sale.
 - *Neighborhood Engagement:* In Q1, we hosted 131 Open Houses and grossed over 700 visitors. This is the highest attendance per open house since the program's first quarter in 2015, further supporting the decision to reduce open houses to two times per week.
- **What's next?**
 - *Building the Internal Team:* DLBA brought on a manager for the program during Q1, who is off to a fantastic start. The R&R team now has 3 full-time staff and is poised to quickly improve on the program now that resources are on-board. The change to the open house schedule is just one idea of many and we look forward to reporting on other successful cost-saving implementations in the coming quarters, as we turn our focus to decreasing the per-home loss on sale.
 - *R&R Pipeline:* The first attempted quarterly prospective inventory packet was completed in Q1. Although the process is not yet perfect, both the DLBA and its partners have learned a lot from this process and we expect the Q2 packet to build on these lessons.
 - *Closings on Deck:* At the end of Q1, two homes were under contract and an addition 6 were up for sale.

By focusing efforts in select neighborhoods and spacing out sales of turn-key ready homes, the DLBA hopes to raise market comparables ("comps"). If the initiative is successful, higher comps will result in greater access to mortgages throughout the City.

Side Lot Sales Program

The Side Lot program successfully launched on July 7, 2014. Side lot properties are vacant lots offered for sale at \$100 to the owner-occupants on either side, behind, or in front of the lot. Residents may submit an online application along with their credit card information or money order and receive a deed to their adjacent vacant lot in the mail.

While the online portion of the program has been a great success, the DLBA continues its tradition of providing direct customer service in communities via Side Lot Fairs. The first Side Lot Fair was held on December 6th, 2014, bringing the program to neighborhoods in District 6 & District 7.

The DLBA hosted its most recent Side Lot Fairs for Districts 1, 2, 6, and 7 at Voyageur Academy on March 25th, 2017 and for Districts 3, 4, and 5 at Heilmann Recreation Center on April 8th, 2017. In total, our staff facilitated 180 side lot sales at Voyageur Academy and 190 side lot sales at Heilmann Recreation Center. In addition to sales, each fair offered multiple DLBA help desks and provided a diverse selection of community resources.

Total Amount of Side Lots Sold by District as of March 31, 2017							
District 1	District 2	District 3	District 4	District 5	District 6	District 7	Total
647	563	830	944	1244	1560	777	6565

Attachments:

- **Page: Community Partner Projects Pipeline as of March 31, 2017**
- **Page: Closed Auction Properties from January 6, 2017- March 31, 2017**

Council District	Community Partner Name	Lots Sold	Structures Sold	Total Sold
1	African Caribbean Chamber Services	0	1	1
1	Citadel Community Development Corporation	9	0	9
1	Cross Pollination Corridor Project	7	0	7
1	Foundation Khadimu Rassul of Michigan	2	0	2
1	Greater Love Missionary Baptist Church	1	0	1
1	Greater New Light Missionary Baptist Church	2	0	2
1	Honest Plot: An Organic Collective DBA Northwest Brightmoor Renaissance, The	7	1	8
1	Neighbors Building Brightmoor	0	1	1
1	New Destiny Community Outreach	4	0	4
1	Redford Brightmoor Initiative	1	0	1
2	Bagley Housing Association	0	1	1
2	Bridges to Homeownership Inc. owned by Black Caucus Foundation of Michigan Inc.	0	23	23
2	Brookins Construction Trade School	0	7	7
2	Building Detroit Futures	0	11	11
2	C.L.E.A.N. in Detroit	0	1	1
2	Center for Youth and Urban Family Development, The	0	1	1
2	Church of God and Saints of Christ	2	0	2
2	Club Judah Ministries	1	0	1
2	Demographic Inspirations-Detroit	6	1	7
2	Fosters Solutions	0	6	6
2	God's Oldschool Ministry, Inc.	0	1	1
2	Greater Mitchell Temple Church of God in Christ	4	2	6
2	Jordan's Place	0	1	1
2	Lakeridge Village, Inc.	6	2	8
2	Liberty Temple Baptist Church	10	0	10
2	Little Rock Missionary Baptist Church Tree of Life Foundation	0	1	1
2	Living Waters Community Development Corporation	7	0	7
2	Midtown Detroit, Inc.	0	1	1
2	New Bright Star Missionary Baptist Church	2	0	2
2	Safe Place Transition Center	0	6	6
2	Team Cares, Inc.	0	5	5
2	Up from the World Ministries, Inc.	6	1	7

2	Word Restoration Ministries Church	3	0	3
3	Carrie Morris Arts Production	5	0	5
3	CKM Community Development Corporation	2	0	2
3	Cornerstone Schools Association	2	1	3
3	Cosmopolitan Missionary Baptist Church	1	0	1
3	Davison Holistic Incorporated	8	0	8
3	Deliverance of Praise Tabernacle	0	1	1
3	Detroit Unity in the Community	0	1	1
3	Durga Temple	1	0	1
3	Georgia Street Community Collective, Inc.	9	0	9
3	Hope Center, Inc.	8	0	8
3	Islamic Center of North Detroit	6	0	6
3	Jude Missionary Baptist Church	4	0	4
3	Lifebuilders	5	1	6
3	Matrix Human Services	4	0	4
3	Mt. Olivet Neighborhood Watch	9	0	9
3	Osborn Neighborhood Alliance	0	1	1
3	Pingree Farms Foundation	6	0	6
3	Popps Packing	1	0	1
3	Powerhouse Productions	2	0	2
3	Survival Community Development Nonprofit Housing Corporation	5	0	5
4	Abundant Faith Cathedral	1	1	2
4	Amil Youth Group	0	1	1
4	Brighter Day Empowerment Zone	4	0	4
4	Canfield Consortium	6	0	6
4	Community Covenant	3	0	3
4	Creeside Community Development Corporation	2	0	2
4	Eden Gardens Block Club	6	0	6
4	Faith, Hope, and Unity Gardens	9	0	9
4	Friends of the Alger Theater	9	0	9
4	Habitat for Humanity Detroit	4	2	6
4	Jefferson Chalmers Community Food System	9	0	9
4	Jefferson East, Inc.	3	0	3
4	Love N Kindness, Community Development Corporation	0	14	14

4	Michigan Historic Preservation Network	0	1	1
4	Mt. Calvary Evangelical Lutheran Church	5	0	5
4	Peace Evangelical Lutheran	1	0	1
4	Redeem Detroit	8	0	8
4	Refuge Temple Church, Inc.	7	0	7
4	S.A.Y. Detroit	3	10	13
4	Together We Are Detroit	9	0	9
4	Total Life Christian Ministries, Inc.	6	0	6
4	Victory Fellowship Baptist Church	1	2	3
4	Wolverine Human Services	9	0	9
4	Yorkshire Woods Community Organization	5	0	5
5	555 Nonprofit Studio/Gallery	2	1	3
5	Blackbottom Group, The	4	0	4
5	Boggs Educational Center Project Team	7	0	7
5	Cass Community Social Services	8	0	8
5	Central Detroit Christian Community Development Corporation	10	4	14
5	CRITERION	9	0	9
5	Detroit Catholic Pastoral Alliance, The	0	1	1
5	Family Assistance for Renaissance Men	5	1	6
5	Franklin Wright Settlements, Inc.	8	0	8
5	Grace Episcopal Church of Detroit	5	0	5
5	Grace Temple, Church of God in Christ	1	0	1
5	House of God, The	3	0	3
5	Joy Jem Community Development Corporation	0	1	1
5	MACC Development	5	1	6
5	Mack Alive	6	1	7
5	Moore Community Council	3	0	3
5	New Mount Zion Missionary Baptist Church	1	0	1
5	North End Woodward Community Organization (NEWCO)	0	1	1
5	Northend Christian Community Development Corporation	18	0	18
5	Northend Neighborhood Patrol	1	0	1
5	People's Missionary Baptist Church, Inc.	9	0	9
5	Rebound Community Development Corporation	0	2	2
5	Vanguard Community Development Corporation	0	2	2

5	Waldorf Schools Association	4	0	4
5	Women & Adolescents Development for Empowerment (WADE)	5	0	5
5	Write A House	2	2	4
5	Young Leaders Initiative	2	0	2
5	Zion Hope Missionary Baptist Church	9	1	10
6	Bridging Communities, Inc	0	1	1
6	Coalition on Temporary Shelter	1	0	1
6	El Buen Pastor United Methodist Church	1	0	1
6	Greater Dequindre Church Ministries, Inc.	4	0	4
6	Heritage Works	4	0	4
6	Iglesia del Dios Vivo Columna	1	0	1
6	Kairabowt	4	0	4
6	Meditation Missionary Baptist Church	7	1	8
6	Motor City Missionary Baptist Church	8	0	8
6	Peace Tree Parks	2	0	2
6	Rosa Parks Family Foundation	0	1	1
6	Second Chance Christian Ministries	5	0	5
6	Southwest Housing Solutions Corporation	65	14	79
6	Word of Truth Baptist Church, The	6	0	6
6	Yellow Tigers, Inc.	1	0	1
6	Young Nation	4	1	5
6	Zion Chapel	6	0	6
7	Body of Christ Christian Center	0	1	1
7	Christian Community Baptist Church	3	0	3
7	Detroit Impact	0	2	2
7	Detroit Rescue Mission Ministries	0	4	4
7	Fair Hill Missionary Baptist Church	1	0	1
7	Familyhood	1	0	1
7	Great Faith Ministries International, Inc.	0	4	4
7	Greater Grace Temple	1	0	1
7	Holy Temple Church of the Living God in Christ	3	0	3
7	In Memory of Community Garden	2	0	2
7	Kendall Community Development Corporation	0	2	2
7	Kingdom Hope Centers	0	3	3

Auction Closings (January-March 2017)			
Property Address	Neighborhood	Final Sale Amount	Closing Date
22580 Argus	Oak Grove	\$1,000	1/9/2017
10858 Balfour	Yorkshire Woods	\$1,000	1/10/2017
9619 Grandville	Franklin Park	\$3,500	1/10/2017
11430 Whitehill	Denby	\$4,300	1/10/2017
10801 Balfour	Yorkshire Woods	\$5,000	1/10/2017
12800 Grayfield	Castle Rouge	\$5,100	1/10/2017
14815 Fairmount Dr	Regent Park	\$1,000	1/11/2017
20403 Wexford	Farwell	\$1,000	1/11/2017
12952 Grandmont	Schoolcraft Southfield	\$1,000	1/12/2017
15500 Mansfield	Crary/St Marys	\$2,200	1/17/2017
7368 Stout	Warrendale	\$13,300	1/17/2017
13985 Mettetal	Greenfield-Grand River	\$3,600	1/17/2017
20538 Regent Dr	Mohican Regent	\$3,800	1/18/2017
258 Smith	North End	\$6,000	1/19/2017
13993 Mettetal	Greenfield-Grand River	\$16,100	1/23/2017
701 Pingree	Piety Hill	\$10,000	1/24/2017
15485 Forrer	Crary/St Marys	\$7,100	1/24/2017
5360 Burns	Pingree Park	\$1,100	1/26/2017
6900 Auburn	Warrendale	\$2,500	1/27/2017
23071 Chippewa	Berg-Lahser	\$15,500	1/27/2017
15945 Curtis	College Park	\$5,100	1/27/2017
7778 Braile	Warrendale	\$7,100	1/27/2017
4305 Three Mile Dr	Morningside	\$1,000	2/1/2017
20437 Greeley	Nolan	\$1,000	2/2/2017
414 W Grand Blvd	Mexicantown	\$40,900	2/3/2017
10827 Marne	Moross-Morang	\$4,300	2/7/2017
12706 St Marys	Schoolcraft Southfield	\$27,100	2/7/2017
10037 Whitcomb	Plymouth-Hubbell	\$1,000	2/7/2017
10865 Stratmann	Outer Drive-Hayes	\$1,000	2/9/2017
8614 Northlawn	Barton-McFarland	\$1,000	2/9/2017
10519 Wayburn	Outer Drive-Hayes	\$1,000	2/10/2017
5903 Kensington	East English Village	\$15,000	2/17/2017
10345 Lakepointe	Outer Drive-Hayes	\$1,000	2/17/2017
14739 St Marys	Grand River-St Marys	\$2,100	2/21/2017
6816 Evergreen	Warrendale	\$2,100	2/22/2017
4700 Three Mile Dr	Morningside	\$5,600	2/23/2017
19400 Harned	Pershing	\$1,000	2/24/2017
20427 Tracey	Schaefer 7/8 Lodge	\$5,000	2/24/2017
7343 Woodrow Wilson	Henry Ford	\$1,000	2/27/2017
14011 Montrose	Greenfield-Grand River	\$2,400	2/28/2017
10426 Lakepointe	Outer Drive-Hayes	\$1,000	3/1/2017

14000 St Marys	Greenfield-Grand River	\$12,600	3/2/2017
19319 Hartwell	Greenwich	\$12,000	3/2/2017
9147 Littlefield	Barton-McFarland	\$3,600	3/7/2017
6859 Auburn	Warrendale	\$1,000	3/8/2017
14232 Asbury Park	Greenfield-Grand River	\$15,500	3/9/2017
3758 Iroquois	Pingree Park	\$1,000	3/9/2017
2950 Field	Islandview	\$45,400	3/10/2017
16809 Harlow	Crary/St Marys	\$6,900	3/10/2017
16708 Burt Rd	Riverdale	\$1,100	3/15/2017
10680 Stratmann	Outer Drive-Hayes	\$1,000	3/15/2017
4338 Courville	Morningside	\$5,000	3/15/2017
5785 Three Mile Dr	Morningside	\$4,100	3/15/2017
9115 Steel	Barton-McFarland	\$1,000	3/15/2017
10630 W Outer Drive	Brightmoor	\$2,000	3/15/2017
4666 Three Mile Dr	Morningside	\$1,300	3/16/2017
6516 Rosemont	Warrendale	\$1,100	3/17/2017
11500 Whitehill	Denby	\$1,000	3/23/2017
6244 Piedmont	Warrendale	\$7,500	3/24/2017
9310 Penrod	Franklin Park	\$2,700	3/28/2017
100 Holbrook	North End	\$3,100	3/29/2017
10666 Stratmann	Outer Drive-Hayes	\$5,800	3/29/2017
11433 Stockwell	Outer Drive-Hayes	\$3,800	3/29/2017
5251 Haverhill	Morningside	\$3,100	3/29/2017
6766 Longacre	Warren Ave Community	\$1,600	3/29/2017
16524 Prevost	Crary/St Marys	\$20,900	3/29/2017
7270 Faust	Warrendale	\$1,000	3/30/2017
16781 Burgess	Riverdale	\$1,000	3/30/2017
2550 Lothrop	LaSalle Gardens	\$10,000	3/30/2017
8439 West Parkway	Far West Detroit	\$70,000	3/30/2017
9161 Littlefield	Barton-McFarland	\$21,100	3/30/2017
19614 Charest	Pershing	\$2,000	3/31/2017
4015 Three Mile Dr	Morningside	\$10,400	3/31/2017
870 Lakewood	Jefferson Chalmers	\$5,600	3/31/2017
5274 Hereford	Cornerstone Village	\$4,100	3/31/2017



Building Detroit

Legal Department

The Detroit Land Bank Authority (DLBA) Legal Department provides legal counsel and assistance to the Board of Directors, the Executive Director, and to the organization's staff for all programs (e.g. disposition, acquisition, and demolition). Additionally, the Legal Department staffs various DLBA programs, including Quiet Title, Compliance, the Nuisance Abatement Program and the Drug House Unit.

Nuisance/Abandoned Properties

The Nuisance Abatement Program (NAP) within the Detroit Land Bank Authority (DLBA) was established in February 2014. The Detroit City Council delegated non-exclusive authority to commence Nuisance Abatement litigation on February 18, 2014 (Council Action Number 23).

Properties that meet the criteria are: boarded, open to trespass, clearly abandoned or neglected, and all must be unoccupied. The property addresses are initially identified through governmental data, and then verified by investigators, community groups, or neighbors, in targeted geographic areas. The NAP Target Areas were defined by the City of Detroit Department of Neighborhoods with input from members of the community. Specific boundaries were determined with the use of data sources to specify areas where NAP actions would be most effective.

This last quarter, the NAP program has started new actions after retooling to update processes to be in line with new title insurance standards. As of March 31, 2017, in the last quarter, the Legal Department had identified, placed notices ("posters") on and filed suit against on over sixty-one properties in nineteen different neighborhoods throughout the City, (program-to-date, 5,288 properties have been postered and 3,697 lawsuit have been filed in one hundred thirty-two different neighborhoods), resulting in five default judgments in the Wayne County Circuit Court, which gave title to those properties to the DLBA (program-to-date, there have been 1,587 default judgments in favor of the DLBA). In the last quarter, there were over twenty-five agreements with property owners to rehabilitate their properties (program-to-date, there have been 1,492 agreements). Program-to-date, there have been 587 donations to the DLBA.

A detailed breakdown by area is **attached**.

Agreements

Notices are placed on targeted properties with instructions that owners/interested parties are to call the NAP hotline (313-502-5280) within 72 hours. Owners of these properties that call are advised of their options:

- Enter into an agreement to rehabilitate the property;
- Enter into an agreement to demolish the property (if needed);

- Enter into an agreement to donate the property; or

As of March 31, 2017, there were 1,633 agreements reached with property owners to rehab their properties to make them fit for occupancy over the course of the program. This last quarter, there were twenty-five agreements.

A detailed breakdown by area is **attached**.

Civil Litigation/Defaults

Service of Process is made on all parties of interest. A search of tax and title records is conducted for each property, to determine all interest holders of record; including owners, mortgage companies, and any other liens. All interest holders of record are named in the civil lawsuit, which requests that the 'nuisance' created by the condition be abated.

Owners or interest holders in property who fail to respond to the lawsuit may lose their ownership rights to the property at a hearing for default judgment.

As of March 31, 2017, the NAP program has received 1,587 default judgments program-to-date. This last quarter, there were eight default judgments and an additional fifty donations.

A detailed breakdown by address is **attached**.

Quiet Title

The Legal Department also began instituting expedited Quiet Title Actions pursuant to authority under Section 9 of the Land Bank Fast Track Act, MCL 124.759. On September 2, 2014 the Chief Judge of the Wayne County Circuit Court issued a special docket directive which created a special docket allowing the Detroit Land Bank Authority to file these actions in an efficient manner. Quiet title actions are filed on properties that have been acquired by the DLBA and which will enable the DLBA to dispose of those properties with a clear title. As of March 31, 2017, the Legal Department has received quiet title judgments on 1,527 properties. This last quarter, there were seventy-four quiet title judgments granted.

Drug Houses

On July 1, 2014, the NAP program expanded to include properties that are a nuisance due to illegal drug activity. When a search warrant is executed and drugs are found in the premises that information is forwarded to the NAP program. A warning letter is sent to the owner of the property after the first search warrant (to negate the 'innocent owner' defense); if a second warrant finds drugs, a case is filed using the same procedures as

used for abandoned properties. As of March 31, 2017, 1,734 search warrants have been executed. This last quarter, there were 111 search warrants executed. Warning letters have been sent to owners of properties where drugs were found. Postcards were sent to neighbors of those properties notifying them that the owner has been warned and asking them to call 313-224-DOPE if suspected drug activity is observed. One hundred and two (113) lawsuits have been filed against those property owners where drugs were found on the property on a second search warrant.

Attached:

- **Nuisance Abatement Target Areas Status**
- **Default Judgment Totals**

DIST	Lead	DLBA NAP Project Areas	Poster Date	Units Posterd	Units Poster ed_Q3 _16	Cases Filed	Cases Filed_Q3 _16	Total Agrmts	Total Agrmts_Q3 _16	Donations	Donations_ Q3_16	Judg ment	Judgment_Q3 _16
1	Brooke Jordan	Cerveny North	5/25/2015	107	0	86	0	34	0	0	3	28	0
	(P6503 1)	Cerveny South	7/6/2015	69	0	51	1	14	0	0	3	3	0
	Nicole Calhoun - Huddleston	DMS Gateway	12/8/2014	77	0	49	0	14	0	23	17	29	0
	(P 7930 8)	Grandmont	2/23/2015	133	33	74	0	26	0	5	8	41	0
		Grandmont Rosedale 1	9/3/2014	28	3	20	0	11	0	1	1	4	0
		Grandmont Rosedale 2	8/4/2014	61	7	40	0	15	0	4	8	18	0
		Non NAP	5/12/2014	126	1	97	1	16	0	10	48	46	0
		North Rosedale	9/3/2014	115	1	63	0	33	0	3	4	15	0
		Old Redford	5/12/2014	68	0	59	0	24	0	1	1	47	1
		Rosedale Park	8/4/2014	106	1	85	2	19	0	1	22	35	0
									0			0	0

2	Kerlyne Alexis-Pinkins	Bagley	7/28/2014	115	1	107	5	41	2	1	1	33	0
	(P76302)	Marygrove	4/8/2014	136	1	105	0	64	1	6	11	73	0
	Candace Griffey	Non NAP	1/30/2015	80	4	74	4	21	1	1	30	18	2
		NW Activities Extend	7/14/2014	73	0	54	0	25	0	1	1	11	0
		NW Activity Center Area	8/31/2015	75	0	61	0	27	1	2	2	27	0
		Palmer Park	9/3/2014	111	6	62	0	21	0	2	2	23	0
		Pembroke East	3/9/2015	109	0	90	0	29	2	3	7	24	0
		Pembroke West	3/9/2015	42	0	28	0	10	1	1	1	0	0
		University District/Bagley	5/27/2014	205	25	118	0	79	1	0	3	44	1
								0				0	0
3	Giusepp e Palazzolo	Campau 1	0811/2014	54	2	32	0	16	0	1	0	16	0
	(P79176)	Campau 2	1/5/2015	17	0	12	0	8	1	1	0	5	0
	Candace Griffey	Conant Gardens	10/13/2014	30	0	21	0	9	1	3	0	7	0
		Conant Gardens 2	1/5/2015	58	0	40	0	15	1	3	0	20	0
		I-94	4/16/2015	3	0	3	0	0	0	0	0	1	0

		Mohican Regent	6/16/2014	90	0	60	0	32	0	3	0	22	0
		Non NAP	8/11/2014	67	1	63	1	5	0	57	9	34	1
		North Burbank (East)	9/3/2014	85	0	80	13	16	0	5	1	34	0
		North Burbank (West)	11/24/2014	108	33	63	0	10	0	5	1	36	0
								0	0			0	0
4	Wayne Garris	Cornerstone	9/3/2014	25	5	18	0	8	0	1	0	6	0
	(P79806)	East English Village	5/5/2014	262	9	187	0	114	0	5	1	53	0
	Myesha Morrison	I-94	4/16/2015	10	0	8	0	1	0	1	0	4	0
		Jefferson Chalmers	8/18/2014	48	0	30	0	18	0	0	0	18	0
		Non NAP	9/3/2014	91	1	85	0	24	1	116	10	39	0
		Yorkshire Woods East	9/3/2014	73	2	62	2	11	0	7	0	26	0
		Yorkshire Woods West	9/3/2014	145	0	127	0	19	0	7	1	60	0
								0	0			0	0
5	Tere McKinney	Boston Edison	6/2/2014	133	1	106	0	66	2	2	0	39	0

	(P71567)	Boston Edison/Ard en Park	6/2/2014	52	0	31	0	22	0	3	0	10	0
	Crystal Miller	Brush Park / Milwaukee Junction	9/3/2014	24	0	24	0	18	1	2	0	4	0
		I-94	4/16/2015	2	0	2	0	2	0	1	0	2	0
		Islandview	2/23/2015	37	1	31	0	7	0	0	0	9	0
		New Center/ Virginia Park		141	11	48	0	33	0	2	0	84	0
		Non NAP	9/3/2014	74	9	139	9	17	0	30	9	4	1
		North Boston/Ard en	5/20/2015	83	0	56	0	40	4	6	0	24	0
		North End	2/23/2015	82	0	61	0	41	0	5	0	29	1
		North End West	2/9/2015	112	1	90	0	22	1	3	0	8	0
		West Village	10/6/2014	99	2	51	0	27	1	5	0	15	0
								0	0			0	0
6	Jaime Gabriel Guerrero											0	0
	(P72691)	Hubbard Farms	7/21/2014	68	0	36	0	32	0	1	0	16	0
	Brandy Doña	I-94	4/16/2015	6	0	6	0	1	0	0	0	4	0
		Non NAP	9/3/2014	58	0	53	1	15	0	22	1	17	0

		Springwells	6/23/2014	100	1	55	0	21	0	3	0	32	0
		Super Southwest (N)	9/3/2014	106	1	76	0	29	1	4	0	24	0
		Super Southwest (SE)	12/15/2014	100	0	73	0	25	0	6	0	40	1
		Super Southwest (SW)	1/26/2015	65	1	54	1	20	0	2	0	18	0
		Woodbridge/North Corktown	9/3/2014	63	8	32	0	28	0	2	0	6	0
								0	0			0	0
7	Brooke Jordan	Aviation (East)	4/13/2015	103	0	72	0	22	0	7	0	38	0
	(P65031)	Aviation Sub	8/25/2014	45	0	35	0	11	0	1	0	21	0
	Jeffery Perlman	DMS South	1/12/2015	77	0	49	0	12	0	11	0	24	0
	(P 80517)	Non NAP	5/27/2014	83	1	66	0	21	0	49	6	22	1
		Russell Woods	9/3/2014	83	2	71	0	33	0	6	1	46	0
		Warren Avenue Community	7/7/2014	120	0	76	0	23	0	5	0	44	0
		Warrendale	6/30/2014	77	1	73	0	32	0	4	0	31	0
		Warrendale North (Central)	8/10/2015	31	0	19	0	4	0	2	0	13	0

		Warrendale North (East)	5/4/2015	94	23	47	0	18	0	5	0	20	0
		Warrendale North (West)	3/2/2015	90	0	75	0	11	0	9	0	40	0
				5227	199	3833	0	1493	25	587	50	1590	8

NAP DEFAULT JUDGMENTS as of March 31st, 2017

Parcel ID	Address	Date	Case Number	Neighborhood	Council District
21024135.030L	13600 E State Fair	12/18/2015	15-013533	Franklin	3
06001837.	1181 W Euclid	12/5/2014	14-009142	Herman Kiefer	5
22022045.	8590 Steel	11/14/2014	14-011743	Aviation Sub	7
22087650.	14001 Piedmont	2/20/2015	14-015180	Westwood Park	1
18009285.	1332 Wheelock	10/16/2015	15-001017	Central Southwest	6
22026896.	17174 Littlefield	5/22/2015	15-001641	Schulze	2
22083173.	16766 Stahelin	6/12/2015	15-001927	North Rosedale Park	1
21009620.	11066 Rosemary	6/19/2015	15-002610	Gratiot-Findlay	4
22095008.	6908 Evergreen	6/12/2015	15-003346	Warrendale	7
13017456.	19744 Lamont	5/29/2015	15-003391	Farwell	3
22093539.	6400 Plainview	6/12/2015	15-004152	Warrendale	7
22090767.	13988 Minock	7/31/2015	15-004435	Westwood Park	1
22095593-5	14414 Evergreen	6/19/2015	15-004435	Westwood Park	1
22092494.	14380 Auburn	6/12/2015	15-004454	Westwood Park	1
21068237.	10347 Mckinney	7/17/2015	15-004817	Yorkshire Woods	4
21073643.	9212 Bishop	7/17/2015	15-004644	Yorkshire Woods	4
18018049-50	8226 Manor	6/19/2015	15-005499	Aviation Sub	7
16029616.	19760 Greenlawn	12/18/2015	15-005830	Pembroke	2
16029616.	19760 Greenlawn	9/11/2015	15-005830	Pembroke	2
09021465.	17896 Hawthorne	8/21/2015	15-005836	Cadillac Heights	3
09007114.	952 E Hildale	2/26/2016	15-006012	Hawthorne Park	3
09007114.	952 E Hildale	7/24/2015	15-006012	Hawthorne Park	3
22076023.	6091 Ashton	7/17/2015	15-006218	Warrendale	7
21025166.	15694 Fairmount Dr	7/31/2015	15-006855	Regent Park	3
21024550.	15667 E State Fair	7/31/2015	15-006876	Regent Park	3
22012391.001	16033 Hemlock	9/11/2015	15-007993	Crary/St Marys	1
22087397.	18781 Shaftsbury	12/18/2015	15-012152	Evergreen-Outer Drive	1
12006256.	16901 Lawton	12/18/2015	15-012753	Martin Park	2
22053042.	13558 Montrose	3/4/2016	15-015798	Schoolcraft Southfield	1
21075445-6	9150 Oldtown	2/26/2016	15-015798	Yorkshire Woods	4
21075445-6	9150 Oldtown	6/5/2015	15-015798	Yorkshire Woods	4
03002653.	641 Westminster	3/25/2016	16-000352	North End	5
22051848.001	15136 Winthrop	5/6/2016	16-000364	Grand River-St Marys	1
18015761.	8615 Kentucky	1/8/2016	15-013656	Barton-McFarland	7
08005618.	7464 Kipling	3/6/2015	14-015553	Henry Ford	5
21078557.002L	5220 Canyon	2/20/2015	14-013807	Cornerstone Village	4
16017016.	1714 Livernois	4/3/2015	15-000395	Central Southwest	6

16000565.	5665 Christianity	4/3/2015	15-000395	Central Southwest	6
18008506.	1240 Beard	4/3/2015	15-000395	Central Southwest	6
20005082-94	809 Glinnan	4/24/2015	15-000396	Central Southwest	6
20006703.	1507 Evans	4/17/2015	15-000396	Springwells	6
20006695.	1553 Evans	4/17/2015	15-000396	Springwells	6
10007099.	1515 17th St	4/1/2015	14-011515	Hubbard Richard	6
13022410.	18070 Revere	1/15/2016	15-000696	Conant Gardens	3
13020341.	18409 Dean	1/15/2016	15-000696	Krainz Woods	3
13022410.	18070 Revere	4/24/2015	15-000696	Conant Gardens	3
22093827.	12108 Plainview	4/24/2015	15-001026	Weatherby	7
20007167.	2565 Carson	5/1/2015	15-001627	Springwells	6
18009642.	1700 Central	5/29/2015	15-001847	Springwells	6
21002076.	17131 Ontario	12/19/2014	14-008089	Cornerstone Village	4
21001930.	17142 Waveney	9/12/2014	14-008089	Cornerstone Village	4
13008744.	2202 E Outer Drive	5/29/2015	15-003391	Pershing	3
13008948.	1941 E Outer Drive	5/29/2015	15-003391	Butler	3
21072697.	9685 Everts	8/7/2015	15-004753	Yorkshire Woods	4
21074145.	9141 Grayton	7/31/2015	15-004753	Yorkshire Woods	4
21073270.	9820 Yorkshire	7/17/2015	15-004817	Yorkshire Woods	4
21073302.	9239 Yorkshire	7/17/2015	15-004817	Yorkshire Woods	4
21074800.	10096 Britain	6/19/2015	15-004644	Yorkshire Woods	4
21073679.	9935 Bishop	6/19/2015	15-004644	Yorkshire Woods	4
21073632.	9140 Bishop	6/19/2015	15-004644	Yorkshire Woods	4
16036782.	20429 Kentucky	7/2/2015	15-005127	Pembroke	2
16036738.	20150 Kentucky	7/2/2015	15-005127	Pembroke	2
16036545.	16134 Kentucky	6/26/2015	15-005502	Fitzgerald/Marygrove	2
18014548.	8099 Cloverlawn	6/19/2015	15-005499	Barton-McFarland	7
18014513.	8517 Cloverlawn	6/26/2015	15-005451	Barton-McFarland	7
18014553.	8067 Cloverlawn	6/26/2015	15-005451	Barton-McFarland	7
10000673.	2413 Hudson	3/11/2016	15-005669	NW Goldberg	5
19005811.	6126 Pennsylvania	2/26/2016	15-005669	Airport Sub	4
21025448.	15901 Fairmount Dr	7/17/2015	15-005836	Regent Park	3
22080711.	6891 Greenview	8/7/2015	15-006436	Warrendale	7
22028587.002L	13250 Hartwell	7/31/2015	15-006876	Grand River-196	7
22067663.	12230 Memorial	7/31/2015	15-006876	Plymouth-196	7
16042794.	13516 Mendota	8/14/2015	15-007093	Northwest Community	7
22021800.	13151 Appoline	7/31/2015	15-007093	Grand River-196	7
06003091.	1546 Burlingame	9/11/2015	15-007576	Dexter-Linwood	5
08009970.	15508 Baylis	9/25/2015	15-008160	Pilgrim Village	2
18014013.	8612 Greenlawn	8/28/2015	15-008479	Barton-McFarland	6

14010303.	1550 Mckinstry	10/23/2015	15-011391	Central Southwest	6
20014824-5	1308 Patricia	1/15/2016	15-014300	Boynton	6
22057887.	12667 Mansfield	3/11/2016	15-015321	Schoolcraft Southfield	1
22057887.	12667 Mansfield	1/22/2016	15-015321	Schoolcraft Southfield	1
20008384.	1118 Woodmere	3/4/2016	15-016302	Springwells	6
20008112.	2014 Sharon	3/4/2016	15-016302	Springwells	6
16022923.	18964 Prairie	10/31/2014	14-010109	Bagley	2
22092096.	6240 Auburn	9/26/2014	14-009594	Warrendale	7
22092090.	6206 Auburn	10/10/2014	14-009594	Warrendale	7
21025867.	16075 Eastburn	3/13/2015	15-000182	Regent Park	3
22070209.	6730 Longacre	10/17/2014	14-009331	Warren Ave Community	7
13020311.	18805 Dean	4/24/2015	15-000696	Krainz Woods	3
13018777.	18806 Justine	4/3/2015	15-000696	Krainz Woods	3
13021424.	18441 Binder	5/1/2015	15-000699	Conant Gardens	3
22090731-2	12034 Minock	8/7/2015	15-001017	Weatherby	7
22083795.	11645 Stahelin	5/1/2015	15-001026	Southfield Plymouth	7
18000936.	7238 Lane	5/29/2015	15-001847	Springwells	6
22091651.	6339 Minock	5/29/2015	15-003346	Warrendale	7
16041343.	20100 Griggs	9/18/2015	15-003898	Pembroke	2
22095007.	6900 Evergreen	6/12/2015	15-004152	Warrendale	7
22094839.	6727 Plainview	6/12/2015	15-004152	Warrendale	7
15013523.	1760 Meldrum	8/21/2015	15-005160	Islandview	5
21024565.	15853 E State Fair	7/17/2015	15-005504	Regent Park	3
21024706.	16258 Rossini Drive	7/2/2015	15-005504	Regent Park	3
21024571.	15895 E State Fair	7/2/2015	15-005504	Regent Park	3
09021423.	17803 Cardoni	8/14/2015	15-005836	Cadillac Heights	3
22093587.	6886 Plainview	8/7/2015	15-006496	Warrendale	7
05004696.002L	908 Marston	9/11/2015	15-007576	North End	5
22090486.	6906 Minock	11/13/2015	15-011368	Warrendale	7
22089073.	6345 Grandville	12/11/2015	15-012167	Warrendale	7
21073630.	6182 Bishop	12/11/2015	15-013533	East English Village	4
22058121.	6907 Mansfield	2/27/2015	14-015324	Warren Ave Community	7
21027655.	15201 Carlisle	2/27/2015	14-015324	Regent Park	3
08005741.	7427 Churchill	3/16/2015	14-015473	Henry Ford	5
21081004.	9794 E Outer Drive	12/12/2014	14-011784	Outer Drive-Hayes	4
20007981.	2327 Cabot	12/5/2014	14-011784	Springwells	6
22052792.	6808 Montrose	12/5/2014	14-009954	Warren Ave Community	7
21023885.	15819 Tacoma	11/14/2014	14-011743	Regent Park	3
20003924.	8306 Navy	11/14/2014	14-011743	Springwells	6

22089465.	13988 Westwood	3/20/2015	14-010264	Westwood Park	1
20002753.	8791 Homer	9/5/2014	14-008619	Springwells	6
13023732.	19015 Charest	6/12/2015	14-013490	Conant Gardens	3
13021503.	18514 Wexford	3/6/2015	14-013490	Conant Gardens	3
22092097.	6244 Auburn	12/5/2014	14-009594	Warrendale	7
22092089.	6202 Auburn	9/26/2014	14-009594	Warrendale	7
21078489.	6330 Canyon	1/23/2015	14-013148	Cornerstone Village	4
22106881.	16703 Pierson	7/18/2014	14-006593	Riverdale	1
22101698.	16503 Stout	7/25/2014	14-006593	Riverdale	1
22106564.	16564 Pierson	7/18/2014	14-006593	Riverdale	1
16036552.	16184 Kentucky	6/20/2014	14-005074	Fitzgerald/Marygrove	2
22008608-9	19222 W Davison	4/17/2015	15-000218	Schoolcraft Southfield	1
22008606-7	19232 W Davison	4/17/2015	15-000218	Schoolcraft Southfield	1
22085960.	13616 Warwick	4/17/2015	15-000218	Schoolcraft Southfield	1
22079454.	6201 Faust	10/10/2014	14-008871	Warrendale	7
22032001.	8602 Carlin	11/14/2014	14-011465	Joy-Schaefer	7
16016749.	1312 Dragoon	4/3/2015	15-000395	Central Southwest	6
22087671.	13549 Piedmont	3/20/2015	15-000182	Schoolcraft Southfield	1
21026255.	15415 Bringard Dr	3/13/2015	15-000182	Regent Park	3
18007190.	1057 Livernois	5/1/2015	15-000396	Central Southwest	6
18000610.	7070 Lexington	5/1/2015	15-000396	Central Southwest	6
13006773.	5111 Garvin	4/24/2015	15-000396	Buffalo Charles	3
22079801.	13582 Greenview	3/20/2015	15-000233	Schoolcraft Southfield	1
22079800.	13576 Greenview	3/20/2015	15-000233	Schoolcraft Southfield	1
22088295.	13526 Grandville	3/20/2015	15-000233	Schoolcraft Southfield	1
21063187.	2127 Alter	6/19/2015	14-011783	Fox Creek	4
21062749.	2150 Alter	11/14/2014	14-011783	Fox Creek	4
21063184.	2145 Alter	11/14/2014	14-011783	Fox Creek	4
22109794.	15914 Westbrook	3/20/2015	14-006967	Brightmoor	1
22113752.	16221 Lahser	7/25/2014	14-006967	Riverdale	1
22112697.	16820 Greydale	7/18/2014	14-006967	Riverdale	1
22109829.	16804 Westbrook	7/25/2014	14-006967	Riverdale	1
22108754.	16165 Trinity	10/17/2014	14-006967	Riverdale	1
22069142.004	6427 Rutland	10/17/2014	14-009545	Warren Ave Community	7
22069125.	6731 Rutland	10/17/2014	14-009545	Warren Ave Community	7
22060893.	6871 Mettetal	10/17/2014	14-009545	Warren Ave Community	7
22070202.	6530 Longacre	10/17/2014	14-009331	Warren Ave Community	7
22058232.	6842 St Marys	10/24/2014	14-009331	Warren Ave Community	7

13018776.	18704 Justine	4/3/2015	15-000696	Krainz Woods	3
18000718.	7117 Lisbon	4/10/2015	15-000699	Central Southwest	6
16000498.	5651 Porter	6/5/2015	15-001017	Central Southwest	6
22090035.	12033 Westwood	5/1/2015	15-001017	Weatherby	7
18008923.	1348 Green	6/12/2015	15-001026	Central Southwest	6
22091343-5	12131 Minock	4/24/2015	15-001026	Weatherby	7
22091346.	12125 Minock	4/24/2015	15-001026	Weatherby	7
22090735.	12060 Minock	4/24/2015	15-001026	Weatherby	7
22089417.012	11696 Westwood	4/24/2015	15-001026	Weatherby	7
20002490.	8051 Rathbone	5/1/2015	15-001627	Springwells	6
20002853.	8368 Homer	6/19/2015	15-001643	Springwells	6
20002152.	8506 Olivet	6/5/2015	15-001643	Springwells	6
21002075.	17127 Ontario	1/9/2015	14-008089	Cornerstone Village	4
22086814.	5815 Warwick	3/6/2015	14-008935	Warrendale	7
22079505.	6056 Greenview	9/19/2014	14-008935	Warrendale	7
16035641.	16510 Indiana	3/24/2015	14-005501	Fitzgerald/Marygrove	2
22089488.	14386 Westwood	11/21/2014	14-010502	Westwood Park	1
20004170.	7834 Whittaker	6/19/2015	15-002240	Springwells	6
01002956.	273 Owen	6/19/2015	15-002535	North End	5
21068651.	9519 Sanilac	5/22/2015	15-002557	Moross-Morang	4
22095005.	6888 Evergreen	6/19/2015	15-003346	Warrendale	7
22091652.	6333 Minock	5/22/2015	15-003346	Warrendale	7
15007990.	903 E Grand Blvd	6/5/2015	15-003406	Gratiot-Grand	5
15000611.	1456 E Grand Blvd	6/5/2015	15-003406	Gratiot Town/Kettering	5
22092998.	6767 Auburn	6/12/2015	15-004152	Warrendale	7
22092991.	6817 Auburn	6/12/2015	15-004152	Warrendale	7
22093875.	14184 Plainview	7/31/2015	15-004435	Westwood Park	1
22089976.	14143 Westwood	7/31/2015	15-004435	Westwood Park	1
22091304.	14123 Minock	7/31/2015	15-004435	Westwood Park	1
22091322.	13961 Minock	7/31/2015	15-004435	Westwood Park	1
22090762.	13952 Minock	7/31/2015	15-004435	Westwood Park	1
22090763.	13960 Minock	6/19/2015	15-004435	Westwood Park	1
22090764.	13968 Minock	6/19/2015	15-004435	Westwood Park	1
22125837.	11466 W Outer Drive	6/26/2015	15-004473	Brightmoor	1
22125803.	11182 W Outer Drive	6/26/2015	15-004473	Brightmoor	1
22125800.	11162 W Outer Drive	6/26/2015	15-004473	Brightmoor	1
21073268.	9802 Yorkshire	7/17/2015	15-004817	Yorkshire Woods	4
21072891.	9758 Kensington	7/24/2015	15-004680	Yorkshire Woods	4
21025159.	15854 Fairmount Dr	6/26/2015	15-005218	Regent Park	3
13020786-7	20223 Ryan	6/26/2015	15-005218	Farwell	3

18015857-8	8152 Wyoming	6/26/2015	15-005451	Barton-McFarland	7
21069775-80	5942 Buckingham	8/21/2015	15-005520	Morningside	4
21024606-7	16215 E State Fair	7/17/2015	15-005504	Regent Park	3
16029623.	19942 Greenlawn	7/24/2015	15-005830	Pembroke	2
16015386.	4996 Wesson	7/17/2015	15-005669	Chadsey Condon	6
18002741.	6357 W Edsel Ford	7/17/2015	15-005669	Claytown	6
14010751.	5364 Lovett	7/17/2015	15-005669	Midwest	6
20018412.	12894 Corbin	8/14/2015	15-005836	Boynton	6
22053867.	13986 Forrer	8/14/2015	15-006193	Greenfield-Grand River	1
22107890.	16145 Burt Rd	8/7/2015	15-006496	Riverdale	1
22052303.	15823 Winthrop	8/28/2015	15-008194	Crary/St Marys	1
20007257.	2800 Inglis	9/11/2015	15-008479	Springwells	6
14011175.	5173 28th St	10/23/2015	15-011391	Chadsey Condon	6
18009049.	1721 Green	10/23/2015	15-011391	Springwells	6
22092698.	14003 Auburn	11/13/2015	15-011650	Westwood Park	1
22087396.001	18778 Shaftsbury	12/18/2015	15-012152	Evergreen-Outer Drive	1
20007476.	2689 Pearl	1/15/2016	15-014300	Springwells	6
22014534.	22130 Willmarth	1/15/2016	15-014591	Old Redford	1
18008429.	1085 Lewerenz	4/3/2015	15-000395	Central Southwest	6
20008295.	2015 Sharon	10/24/2014	14-008912	Springwells	6
22055672.	6842 Rutherford	10/17/2014	14-009545	Warren Ave Community	7
21072887.	9728 Kensington	7/24/2015	15-004680	Yorkshire Woods	4
17013094-9	6433 Sheridan	8/21/2015	15-005520	Airport Sub	3
16025785.	20125 San Juan	7/24/2015	15-005830	Pembroke	2
14012174.	13320 Broadstreet	7/31/2015	15-006876	Russell Woods	7
18009282.	1314 Wheelock	8/28/2015	15-008479	Central Southwest	6
21068545.029	10497 Duprey	12/11/2015	15-013138	Moross-Morang	4
15009911.	1438 Canton	9/11/2015	15-005160	Islandview	5
06002787.002L	1458 Calvert	9/4/2015	15-007106	Gateway Community	5
22015636-7	18905 Margareta	12/18/2015	15-012152	Evergreen-Outer Drive	1
06001809.	1424 Virginia Park	8/22/2014	14-008035	West Virginia Park	5
21050001-2	4315 Lenox	11/14/2014	14-011743	Fox Creek	4
20004114.	2124 Mullane	11/14/2014	14-011743	Springwells	6
17000100.	7917 St Paul	1/23/2015	14-013807	West Village	5
02001501.	70 Longfellow	10/9/2015	14-013092	Boston Edison	5
05004749.	9514 Oakland	1/16/2015	14-013092	North End Neighborhood	5
17015143-4	18471 Teppert	4/24/2015	15-000218	Mount Olivet	3
22078624.	13500 Faust	3/20/2015	15-000182	Schoolcraft Southfield	1
10008764.	8950 La Salle Blvd	8/7/2015	14-011515	North LaSalle	5

21072803.	5050 Kensington	2/6/2015	14-014427	East English Village	4
20004404.	2914 Woodmere	5/1/2015	15-001627	Springwells	6
18000949.	7227 Cahalan	7/31/2015	15-001847	Springwells	6
04002314.	821 Hazelwood	8/14/2015	15-002535	Piety Hill	5
22113400.	18120 Lahser	8/7/2015	15-003077	Bentler-Pickford	1
22113677.	18239 Lahser	5/8/2015	15-003077	Old Redford	1
22113431.	18950 Lahser	5/8/2015	15-003077	Bentler-Pickford	1
18016421.	8234 Normile	6/26/2015	15-005451	Aviation Sub	7
01003152.	241 Westminster	1/30/2015	14-012855	North End	5
22052397.	14305 Winthrop	7/31/2015	15-006192	Greenfield-Grand River	1
06002788.	1452 Calvert	9/4/2015	15-007106	Gateway Community	5
22084815.	18638 Sunderland Rd	11/20/2015	15-012152	Evergreen-Outer Drive	1
17005771.	6421 Fischer	8/21/2015	15-005520	Airport Sub	3
21063346.	3610 Wayburn	12/12/2014	14-011743	Morningside	4
16036978.	16203 Kentucky	4/15/2016	15-005818	Fitzgerald/Marygrove	2
16036979.	16197 Kentucky	4/15/2016	15-005818	Fitzgerald/Marygrove	2
08006022.	4530 Commonwealth	1/29/2016	15-013078	Woodbridge	6
22055006.	15842 Prevost	9/11/2015	15-007993	Crary/St Marys	1
18015685.	8594 Kentucky	3/4/2016	15-013656	Barton-McFarland	7
21026310.	16053 Bringard Dr	2/27/2015	14-015473	Regent Park	3
08002895.	1730 Edison	8/15/2014	14-007685	Boston Edison	5
16020535.	18287 Santa Rosa	2/27/2015	14-014971	Bagley	2
10002479.	2281 Atkinson	2/6/2015	14-012726	Historic Atkinson	5
22109307.	16545 Blackstone	7/18/2014	14-006593	Riverdale	1
16036028.	16505 Indiana	6/12/2015	14-005074	Fitzgerald/Marygrove	2
10002731.	2262 Chicago	7/17/2015	14-009268	Boston Edison	5
22058136.	6801 Mansfield	4/3/2015	15-000699	Warren Ave Community	7
20003900.	8433 Navy	3/25/2016	15-001559	Springwells	6
22071770.	16741 Archdale	5/22/2015	15-001927	Crary/St Marys	1
21068428.010	10917 Peerless	6/5/2015	15-002610	Moross-Morang	4
21070540.	5951 Devonshire	8/14/2015	15-005669	Morningside	4
22055575.	14309 Prevost	7/24/2015	15-006087	Greenfield-Grand River	1
22071897.	14395 Archdale	8/28/2015	15-006885	Grandmont	1
21074231.	4873 Grayton	10/16/2015	15-011322	East English Village	4
22078800.	18752 Faust	12/4/2015	15-012152	Evergreen-Outer Drive	1
12009736.	414 W Grand Blvd	4/10/2015	14-009875	Mexicantown	6
10002536.	2280 Atkinson	8/15/2014	14-007685	Historic Atkinson	5
21071810.	3476 Audubon	2/6/2015	14-014427	Morningside	4

22069101.	6897 Rutland	10/17/2014	14-009545	Warren Ave Community	7
16035637.	16246 Indiana	6/13/2014	14-005501	Fitzgerald/Marygrove	2
21068592.034	10353 Lanark	6/5/2015	15-002610	Moross-Morang	4
22058565.	14334 St Marys	8/7/2015	15-006192	Greenfield-Grand River	1
08002041.	1644 Virginia Park	10/17/2014	14-009142	West Virginia Park	5
16010395.	1177 Morrell	10/10/2014	14-009875	Central Southwest	6
16009605.	1419 Mckinstry	10/10/2014	14-009875	Central Southwest	6
12008527.	1256 24th St	10/10/2014	14-009875	Mexicantown	6
16042416.	17365 Birwood	12/5/2014	14-010998	Schulze	2
08005626.	7645 Kipling	2/27/2015	14-015553	Henry Ford	5
21027274.	16425 Collingham	2/27/2015	14-015324	Regent Park	3
21054983.	725 Lakewood	11/21/2014	14-011206	Jefferson Chalmers	4
16040378.	18600 Ilene	12/5/2014	14-009954	Schulze	2
16027934.	17127 Santa Barbara	8/8/2014	14-007347	Bagley	2
16025949.	17335 San Juan	8/1/2014	14-007347	Bagley	2
20003657.	8731 Mandale	9/5/2014	14-008619	Springwells	6
22092081.	6078 Auburn	9/26/2014	14-009594	Warrendale	7
22092078-9	6058 Auburn	9/26/2014	14-009594	Warrendale	7
16044143.	18963 Pinehurst	10/10/2014	14-009774	Schulze	2
21026580.	13900 Edmore Dr	9/19/2014	14-008390	Mohican Regent	3
08001982.	1709 Virginia Park	1/23/2015	14-013500	West Virginia Park	5
14004719.	4870 Sturtevant	12/19/2014	14-012119	Russell Woods	7
14005265.	4239 Tyler	1/9/2015	14-012119	Russell Woods	7
16036037.	16207 Indiana	6/6/2014	14-005074	Fitzgerald/Marygrove	2
16035638.	16250 Indiana	6/6/2014	14-005074	Fitzgerald/Marygrove	2
16035628.	16182 Indiana	6/20/2014	14-005074	Fitzgerald/Marygrove	2
16033298.	16531 Cherrylawn	6/20/2014	14-005074	Fitzgerald/Marygrove	2
14005312.	4088 Tyler	2/6/2015	14-012465	Russell Woods	7
16036573.	16566 Kentucky	1/9/2015	14-012465	Fitzgerald/Marygrove	2
22028361.	8226 Hartwell	11/14/2014	14-011465	Aviation Sub	7
18018551.	8234 Meyers	11/14/2014	14-011465	Aviation Sub	7
13005450.	5647 Caniff	2/13/2015	14-011086	Buffalo Charles	3
22109801.	16166 Westbrook	7/25/2014	14-006967	Riverdale	1
14004807.	4055 Fullerton	12/19/2014	14-012389	Russell Woods	7
16008546.	10112 Curtis	10/10/2014	14-009665	Schulze	2
16042108.	17164 Birwood	10/10/2014	14-009665	Schulze	2
22070233.	6900 Longacre	2/27/2015	14-009331	Warren Ave Community	7
22065980.	6850 Abington Ave	12/12/2014	14-009331	Warren Ave Community	7

22062342.	6701 Asbury Park	10/24/2014	14-009331	Warren Ave Community	7
22058174.	6361 Mansfield	10/24/2014	14-009331	Warren Ave Community	7
13022091.	18402 Norwood	4/3/2015	15-000696	Conant Gardens	3
13021771.	18475 Wexford	5/1/2015	15-000699	Conant Gardens	3
22059536.	6464 Mettetal	4/3/2015	15-000699	Warren Ave Community	7
22079203.	12031 Faust	4/24/2015	15-001026	Southfield Plymouth	7
16034255.	16165 Ohio	6/13/2014	14-005501	Fitzgerald/Marygrove	2
21074795.	9131 Boleyn	8/21/2015	15-004817	Yorkshire Woods	4
14004664.	4003 Sturtevant	10/31/2014		Russell Woods	7
16042352-3	18701 Birwood	12/5/2014	14-009954	Schulze	2
21027540.	13894 Carlisle	11/14/2014	14-010207	Mohican Regent	3
20002837.	8750 Homer	9/5/2014	14-008619	Springwells	6
16039388.	18950 Washburn	10/10/2014	14-009774	Schulze	2
21075367.	3941 Cadieux	7/11/2014	14-006274	East English Village	4
21075026-7	5580 Cadieux	7/11/2014	14-006274	Cornerstone Village	4
21074435.	4892 Harvard Rd	7/11/2014	14-006274	East English Village	4
21073376.	5205 Yorkshire	7/11/2014	14-006274	East English Village	4
21072940.	5983 Kensington	7/11/2014	14-006274	East English Village	4
21009383.	17041 Chandler Park Dr	7/11/2014	14-006274	East English Village	4
21025244.	14626 Fairmount Dr	9/19/2014	14-008390	Mohican Regent	3
16030787.	16161 Roselawn	6/6/2014	14-005074	Fitzgerald/Marygrove	2
14012167.	13204 Broadstreet	2/6/2015	14-012465	Russell Woods	7
14005386.	4295 Waverly	1/9/2015	14-012465	Russell Woods	7
22079451.	6217 Faust	4/3/2015	15-000395	Warrendale	7
18000669.	7084 Army	4/3/2015	15-000395	Central Southwest	6
21073344.	5775 Yorkshire	3/20/2015	15-000182	East English Village	4
13005586.	5594 Harold	12/12/2014	14-011086	Buffalo Charles	3
22113730.	16747 Lahser	7/25/2014	14-006967	Riverdale	1
16029905.	16169 Greenlawn	12/5/2014	14-008912	Fitzgerald/Marygrove	2
21009271.	16610 Chandler Park Dr	9/12/2014	14-008637	East English Village	4
16032281.	16193 Northlawn	2/2/2015	14-005501	Fitzgerald/Marygrove	2
16032266.	16539 Northlawn	4/3/2015	14-005501	Fitzgerald/Marygrove	2
16033834.	16252 Ohio	6/13/2014	14-005501	Fitzgerald/Marygrove	2
16030785.	16177 Roselawn	6/13/2014	14-005501	Fitzgerald/Marygrove	2
21080636.	10223 E Outer Drive	5/1/2015	15-002557	Outer Drive-Hayes	4
21073242.	6006 Yorkshire	7/11/2014	14-006274	East English Village	4
14005279.	4335 Tyler	1/23/2015	14-013148	Russell Woods	7

22069102.	6891 Rutland	10/24/2014	14-009545	Warren Ave Community	7
16035152.	16247 Wisconsin	6/27/2014	14-005501	Fitzgerald/Marygrove	2
21026693.	14981 Edmore Dr	2/27/2015	14-015324	Regent Park	3
21027107.	13877 Collingham	9/12/2014	14-008644	Mohican Regent	3
21063085.	3799 Alter	5/1/2015	15-002659	Fox Creek	4
16025609.003L	18200 San Juan	2/13/2015	14-014813	Bagley	2
16032871.	16558 Cherrylawn	6/27/2014	14-005074	Fitzgerald/Marygrove	2
16019439.	17527 Stoepel	8/1/2014	14-007347	Bagley	2
16036045.	16149 Indiana	6/6/2014	14-005074	Fitzgerald/Marygrove	2
16040566.	18711 Ilene	4/24/2015	15-000218	Schulze	2
21073562.	5076 Bishop	9/12/2014	14-008637	East English Village	4
21055643.	20108 Regent Dr	9/19/2014	14-008390	Mohican Regent	3
08002218.	1647 Pingree	12/5/2014	14-009142	Herman Kiefer	5
06002021.	1421 Pingree	12/5/2014	14-009142	Herman Kiefer	5
06001874.	1545 W Euclid	10/17/2014	14-009142	Herman Kiefer	5
06001847.	1247 W Euclid	12/5/2014	14-009142	Herman Kiefer	5
06001836.	1175 W Euclid	12/5/2014	14-009142	Herman Kiefer	5
06002045.	1558 Pingree	11/4/2014	14-009142	Herman Kiefer	5
06001861.	1471 W Euclid	10/17/2014	14-009142	Herman Kiefer	5
08002307.	1710 Lee Pl	8/22/2014	14-008035	Herman Kiefer	5
08002230.	1717 Pingree	8/22/2014	14-008035	Herman Kiefer	5
08002220.	1657 Pingree	8/22/2014	14-008035	Herman Kiefer	5
08002147.	1711 W Philadelphia	8/22/2014	14-008035	Herman Kiefer	5
08002143.	1687 W Philadelphia	8/22/2014	14-008035	Herman Kiefer	5
06001880.	1534 W Euclid	8/22/2014	14-008035	Herman Kiefer	5
06001879.	1542 W Euclid	8/22/2014	14-008035	Herman Kiefer	5
06001822.	1170 Virginia Park	8/22/2014	14-008035	West Virginia Park	5
08002224.	1681 Pingree	8/22/2014	14-008035	Herman Kiefer	5
06001907.	1226 W Euclid	2/27/2015	14-008035	Herman Kiefer	5
06002111.	1530 Lee Pl	8/22/2014	14-008035	Herman Kiefer	5
06001885.	1504 W Euclid	1/30/2015	14-014971	Herman Kiefer	5
06002015.	1241 Pingree	1/30/2015	14-014465	Herman Kiefer	5
06001973.	1466 W Philadelphia	5/1/2015	14-014427	Herman Kiefer	5
06002081.	1176 Pingree	2/13/2015	14-014427	Herman Kiefer	5
08002131.	1617 W Philadelphia	2/13/2015	14-014427	Herman Kiefer	5
06002059.	1468 Pingree	1/23/2015	14-014085	Herman Kiefer	5
12012470.	16130 Holmur	6/5/2015	15-003295	Martin Park	2
12012469.	16128 Holmur	6/5/2015	15-003295	Martin Park	2
12010720.	16141 Dexter	5/29/2015	15-003295	Martin Park	2
12010719.	16143 Dexter	5/29/2015	15-003295	Martin Park	2

12012475.002L	16155 Holmur	12/18/2015	15-012753	Martin Park	2
12012477.	16143 Holmur	12/18/2015	15-012753	Martin Park	2
14005349.	3775 Waverly	2/13/2015	14-013148	Russell Woods	7
16015892.	1226 Military	4/3/2015	15-000395	Central Southwest	6
22077089.	13619 Rosemont	3/20/2015	15-000182	Schoolcraft Southfield	1
14005216.	3824 Buena Vista	12/19/2014	14-012389	Russell Woods	7
14010312.	1610 Mckinstry	1/16/2015	14-012060	Central Southwest	6
22094576.	12011 Plainview	5/29/2015	15-001017	Weatherby	7
22082982.	11708 Stahelin	5/1/2015	15-001017	Southfield Plymouth	7
01002933.	214 Owen	6/19/2015	15-002535	North End	5
15007945.	1191 E Grand Blvd	6/5/2015	15-003406	Gratiot Town/Kettering	5
22093886.	14258 Plainview	8/7/2015	15-004435	Westwood Park	1
18014104.	8222 Roselawn	8/28/2015	15-008479	Barton-McFarland	6
18014556.	8047 Cloverlawn	5/15/2015		Barton-McFarland	7
01003109.	330 Westminster	11/20/2015	15-012167	North End	5
21068624.	9550 Sanilac	12/11/2015	15-013138	Moross-Morang	4
13007913.	3721 E Nevada	7/17/2015	15-000696	Conant Gardens	3
13007924.	3933 E Nevada	5/1/2015	15-001017	Conant Gardens	3
22094991.	6790 Evergreen	5/22/2015	15-003346	Warrendale	7
22089991.	14001 Westwood	7/31/2015	15-004435	Westwood Park	1
21025153.	15902 Fairmount Dr	6/26/2015	15-005218	Regent Park	3
16023008.	20226 Prairie	9/18/2015	15-005830	Pembroke	2
14005176.	4734 Buena Vista	3/11/2016	15-016015	Russell Woods	7
14005283.	4365 Tyler	12/19/2014	14-012119	Russell Woods	7
14005408.	4302 Waverly	1/9/2015	14-012465	Russell Woods	7
14005234.	3759 Tyler	2/6/2015	14-012389	Russell Woods	7
01002743.	319 Alger	6/12/2015	15-002133	North End	5
22093450.	17321 Westmoreland	11/14/2014	14-011743	Evergreen-Outer Drive	1
22077926.	14427 Penrod	11/14/2014	14-011743	Rosedale Park	1
16035004.	19369 Wisconsin	6/12/2015	15-004725	Bagley	2
16033864.	17336 Ohio	12/19/2014	14-012060	Bagley	2
16029854.	17403 Greenlawn	8/1/2014	14-007347	Bagley	2
16032914.	17600 Cherrylawn	1/9/2015	14-012119	Bagley	2
16020180.	17340 Santa Rosa	12/19/2014	14-012119	Bagley	2
21073529.	4416 Bishop	3/13/2015	14-014427	East English Village	4
22054420.	15865 Forrer	8/21/2015	15-007399	Crary/St Marys	1
16036987.	16143 Kentucky	8/31/2015		Fitzgerald/Marygrove	2
22054567-8	13615 Forrer	10/24/2014		Schoolcraft Southfield	1
21063345.	3600 Wayburn	11/14/2014	14-011743	Morningside	4
20002794.	9234 Homer	9/5/2014	14-008619	Springwells	6

22109187.	16134 Blackstone	7/18/2014	14-006593	Riverdale	1
22104475.	16191 Patton	7/18/2014	14-006593	Riverdale	1
16033836.	16500 Ohio	6/27/2014	14-005074	Fitzgerald/Marygrove	2
22091675.	6095 Minock	9/26/2014	14-008871	Warrendale	7
21063197.	1585 Alter	11/14/2014	14-011783	Fox Creek	4
22053521.	6561 Montrose	10/17/2014	14-009545	Warren Ave Community	7
21063191.	1617 Alter	11/14/2014	14-011783	Fox Creek	4
20002120.	8816 Olivet	10/24/2014	14-008619	Springwells	6
22104473.	16209 Patton	10/17/2014	14-006593	Riverdale	1
16035620.	16126 Indiana	6/6/2014	14-005074	Fitzgerald/Marygrove	2
16033829.	16218 Ohio	6/13/2014	14-005501	Fitzgerald/Marygrove	2
02002897.	18476 Parkside	6/12/2015	15-002917	University District	2
16036031.	16245 Indiana	6/20/2014	14-005074	Fitzgerald/Marygrove	2
06001860.	1463 W Euclid	8/22/2014	14-008035	Herman Kiefer	5
21068975-9	5940 Chatsworth	8/14/2015	15-005669	Morningside	4
22055878.	13580 Rutherford	3/4/2016	15-015798	Schoolcraft Southfield	1
16034085.	19985 Ohio	4/29/2016	15-016545	Pembroke	2
06001825.	1148 Virginia Park	8/22/2014	14-008035	West Virginia Park	5
16016995.	1508 Livernois	4/24/2015	15-000396	Central Southwest	6
22113751.001	16237 Lahser	7/25/2014	14-006967	Riverdale	1
20007234.	2618 Inglis	6/5/2015	15-001643	Springwells	6
22088777.	14009 Grandville	3/20/2015	14-010502	Westwood Park	1
14008154.	1575 W Grand Blvd	6/5/2015	15-003017	Chadsey Condon	6
14008149.	1595 W Grand Blvd	6/5/2015	15-003017	Chadsey Condon	6
21075979.	9170 Woodhall	6/5/2015	15-002610	Yorkshire Woods	4
21068593.	10219 Lanark	6/5/2015	15-002610	Yorkshire Woods	4
22124829.	11617 W Outer Drive	6/12/2015	15-004473	Brightmoor	1
21073281.	9906 Yorkshire	8/7/2015	15-004753	Yorkshire Woods	4
21073309.	9183 Yorkshire	7/17/2015	15-004817	Yorkshire Woods	4
21072682.	9666 Everts	6/19/2015	15-004817	Yorkshire Woods	4
21074133.	9239 Grayton	7/24/2015	15-004680	Yorkshire Woods	4
21025132.	16226 Fairmount Dr	6/26/2015	15-005218	Regent Park	3
09007169.	956 E Golden Gate	8/28/2015	15-005836	Hawthorne Park	3
09022817.	20164 Omira	8/28/2015	15-006012	Nolan	3
09007264.	955 E Robinwood	7/17/2015	15-006012	Hawthorne Park	3
16026670.	12660 Tuller	11/20/2015	15-007093	Oakman Blvd Community	7
20007533.	2356 Wendell	5/29/2015		Springwells	6
21009375.	16933 Chandler Park Dr	7/11/2014	14-006274	East English Village	4
21074011.	5556 Grayton	9/12/2014	14-008637	East English Village	4

21062748.	2146 Alter	11/14/2014	14-011783	Fox Creek	4
15013527.	1774 Meldrum	8/21/2015	15-005160	Islandview	5
21067824.	10274 Balfour	1/8/2016	15-013856	Yorkshire Woods	4
21068030.	10241 Balfour	1/8/2016	15-013856	Yorkshire Woods	4
16036854.	18915 Kentucky	10/31/2014	14-010109	Bagley	2
16028726.	18645 Woodingham	10/31/2014	14-010109	Bagley	2
16019113.	18482 Stoepel	10/31/2014	14-010109	Bagley	2
16019111.	18468 Stoepel	10/31/2014	14-010109	Bagley	2
21025864.	16061 Eastburn	2/27/2015	14-015553	Regent Park	3
21025863.	16053 Eastburn	2/27/2015	14-015553	Regent Park	3
08005617.	7458 Kipling	2/27/2015	14-015553	Henry Ford	5
21054337.	383 Newport	12/5/2014	14-011206	Jefferson Chalmers	4
21054971.	837 Lakewood	11/21/2014	14-011206	Jefferson Chalmers	4
08005753.001	7345 Churchill	3/16/2015	14-015473	Henry Ford	5
21027759.	16479 Carlisle	2/27/2015	14-015473	Regent Park	3
21026319.	16109 Bringard Dr	2/27/2015	14-015473	Regent Park	3
21026220.	14911 Bringard Dr	2/27/2015	14-015473	Regent Park	3
14004871.	4098 Fullerton	2/27/2015	14-011784	Russell Woods	7
21072918.	9221 Kensington	11/14/2014	14-011743	Yorkshire Woods	4
21063597.	11040 Wayburn	11/14/2014	14-011743	Denby	4
21023383.	15645 Manning	11/14/2014	14-011743	Regent Park	3
10002543.	2220 Atkinson	8/15/2014	14-007685	Historic Atkinson	5
10002478.	2271 Atkinson	8/15/2014	14-007685	Historic Atkinson	5
06002393.	1211 Edison	8/15/2014	14-007685	Boston Edison	5
06002359.	1434 Atkinson	8/15/2014	14-007685	Historic Atkinson	5
16033234.	18115 Cherrylawn	8/1/2014	14-007347	Bagley	2
16028466.	18234 Woodingham	11/14/2014	14-010207	Bagley	2
16020515.	18511 Santa Rosa	11/14/2014	14-010207	Bagley	2
20001962.	9112 Witt	12/19/2014	14-008619	Springwells	6
20002385.	9153 Chamberlain	9/5/2014	14-008619	Springwells	6
22061340.	14560 Asbury Park	3/20/2015	14-013750	Greenfield-Grand River	1
21078671.	5303 Ashley	2/20/2015	14-013148	Cornerstone Village	4
22028774.	17146 Hartwell	6/19/2015	15-001403	Schulze	2
16028418.	17300 Woodingham	6/19/2015	15-001403	Bagley	2
22112917.	16739 Greydale	7/18/2014	14-006593	Riverdale	1
22112267.	16911 Burgess	7/18/2014	14-006593	Riverdale	1
16035166.	16149 Wisconsin	8/7/2015	14-013500	Fitzgerald/Marygrove	2
14004733.	4758 Sturtevant	12/19/2014	14-012119	Russell Woods	7
16034260.	16129 Ohio	3/6/2015	14-005074	Fitzgerald/Marygrove	2
16036550.	16170 Kentucky	6/6/2014	14-005074	Fitzgerald/Marygrove	2

16035633.	16218 Indiana	6/6/2014	14-005074	Fitzgerald/Marygrove	2
16032285.	16169 Northlawn	6/6/2014	14-005074	Fitzgerald/Marygrove	2
16035165.	16157 Wisconsin	6/20/2014	14-005074	Fitzgerald/Marygrove	2
10002805.	2550 W Boston Blvd	1/30/2015	14-014465	Boston Edison	5
14005295.	4308 Tyler	2/6/2015	14-012465	Russell Woods	7
16029400.	16154 Greenlawn	2/6/2015	14-012465	Fitzgerald/Marygrove	2
14005406.	4314 Waverly	1/9/2015	14-012465	Russell Woods	7
14005399.	4364 Waverly	1/9/2015	14-012465	Russell Woods	7
22089091.	6207 Grandville	10/10/2014	14-008871	Warrendale	7
22032173.	8367 Carlin	7/17/2015	14-011465	Joy-Schaefer	7
22032174.	8361 Carlin	11/14/2014	14-011465	Joy-Schaefer	7
18007144.	1609 Livernois	4/3/2015	15-000395	Central Southwest	6
22077754.	13600 Penrod	3/20/2015	15-000182	Schoolcraft Southfield	1
22079179.	13509 Faust	3/20/2015	15-000182	Schoolcraft Southfield	1
22083753.	13501 Stahelin	4/17/2015	15-000396	Schoolcraft Southfield	1
16016785.	1565 Dagoon	4/24/2015	15-000396	Central Southwest	6
22082638.	12937 Glastonbury	3/20/2015	15-000233	Schoolcraft Southfield	1
22081876.	12880 Glastonbury	3/20/2015	15-000233	Schoolcraft Southfield	1
22074950.	13550 Ashton	3/20/2015	15-000233	Schoolcraft Southfield	1
22087654.	13969 Piedmont	3/20/2015	14-011515	Westwood Park	1
21074029.	5928 Grayton	6/5/2015	14-012441	East English Village	4
16042115.	17216 Birwood	6/12/2015	14-009969	Schulze	2
14004703.	4775 Sturtevant	12/19/2014	14-012389	Russell Woods	7
16030707.	18075 Roselawn	12/19/2014	14-008912	Bagley	2
16021317.	17534 Monica	1/9/2015	14-012060	Bagley	2
21075287.	5233 Cadieux	9/26/2014	14-008637	East English Village	4
21026084.	14450 Bringard Dr	9/12/2014	14-008644	Mohican Regent	3
22055674.	6854 Rutherford	3/16/2015	14-009545	Warren Ave Community	7
22065960.	6710 Abington Ave	10/17/2014	14-009331	Warren Ave Community	7
13022087.	18046 Norwood	5/8/2015	15-000696	Conant Gardens	3
13020300.	18885 Dean	4/24/2015	15-000696	Krainz Woods	3
22084694.	16534 Sunderland Rd	6/12/2015	15-001955	North Rosedale Park	1
13006646.	5118 Garvin	4/10/2015	15-000699	Buffalo Charles	3
13021419.	18469 Binder	4/10/2015	15-000699	Conant Gardens	3
13020340.	18415 Dean	4/10/2015	15-000699	Krainz Woods	3
13006772.	5109 Garvin	4/10/2015	15-000699	Buffalo Charles	3
22094559.	12133 Plainview	5/1/2015	15-001017	Weatherby	7
22095441.	12096 Evergreen	5/1/2015	15-001017	Weatherby	7
13019406.	18015 Shields	5/1/2015	15-001017	Krainz Woods	3

13022742.	18455 Revere	5/1/2015	15-001017	Conant Gardens	3
13022422.	18466 Revere	5/1/2015	15-001017	Conant Gardens	3
13022099.	18450 Norwood	5/8/2015	15-001026	Conant Gardens	3
22082978.	11682 Stahelin	4/24/2015	15-001026	Southfield Plymouth	7
22078022.	11641 Penrod	4/24/2015	15-001026	Southfield Plymouth	7
20007228.	2582 Inglis	5/29/2015	15-001559	Springwells	6
20003323.	8351 Lane	5/22/2015	15-001627	Springwells	6
20007329.	2422 Norman	5/1/2015	15-001627	Springwells	6
22022753.	18403 Steel	7/31/2015	15-001641	Schulze	2
22023717.	18200 Sorrento	5/22/2015	15-001641	Schulze	2
22027914.	18466 Snowden	5/22/2015	15-001641	Schulze	2
18010128.	2332 Honarah	8/14/2015	15-001847	Springwells	6
22081826.	16591 Avon	6/26/2015	15-001927	North Rosedale Park	1
22067292.	16545 Lindsay	5/29/2015	15-001927	Crary/St Marys	1
02001370.	149 Hazelwood	5/29/2015	15-002188	Piety Hill	5
04002230.	689 Gladstone	6/12/2015	15-002188	Piety Hill	5
04002303.	687 Hazelwood	5/29/2015	15-002188	Piety Hill	5
01002106.002L	245 Custer	6/19/2015	15-002240	North End	5
01002369.	264 Mt Vernon	6/26/2015	15-002242	North End	5
01003028.	251 Leicester Ct	6/19/2015	15-002242	North End	5
01002983.	244 Leicester Ct	6/19/2015	15-002242	North End	5
04002140.	698 Pingree	4/10/2015	14-014085	Piety Hill	5
14008135.	1647 W Grand Blvd	6/5/2015	15-003017	Midwest	6
21079958.	19991 McCormick	6/19/2015	15-002549	Moross-Morang	4
21075969-74	9132 Woodhall	6/12/2015	15-002549	Yorkshire Woods	4
21068437.	10723 Peerless	6/5/2015	15-002549	Moross-Morang	4
21068454.	10428 Marne	6/5/2015	15-002549	Yorkshire Woods	4
21080800.	8461 E Outer Drive	6/12/2015	15-002610	Eden Gardens	4
21080898.	8668 E Outer Drive	5/1/2015	15-002659	Wade	4
21006117.	12500 Wade	5/1/2015	15-002659	Ravendale	4
04002557.	862 Atkinson	8/7/2015	15-002535	Piety Hill	5
02001376.	130 Hazelwood	8/7/2015	15-002535	Piety Hill	5
21079924.	20469 McCormick	5/22/2015	15-002557	Moross-Morang	4
21068592.022	10519 Lanark	5/22/2015	15-002557	Moross-Morang	4
21080667.	9885 E Outer Drive	5/1/2015	15-002557	Outer Drive-Hayes	4
22092106.	6332 Auburn	5/22/2015	15-003346	Warrendale	7
22094949.	6344 Evergreen	12/11/2015	15-003346	Warrendale	7
15008081.	385 E Grand Blvd	7/17/2015	15-003406	Islandview	5
15008007.	819 E Grand Blvd	6/5/2015	15-003406	Gratiot-Grand	5
15007998.	855 E Grand Blvd	6/5/2015	15-003406	Gratiot-Grand	5

22093573.	6788 Plainview	6/19/2015	15-003364	Warrendale	7
22098670.	6755 Vaughan	6/5/2015	15-003364	Warrendale	7
22098672.	6741 Vaughan	6/5/2015	15-003364	Warrendale	7
22098705.	6365 Vaughan	6/5/2015	15-003364	Warrendale	7
22098654.	6865 Vaughan	6/5/2015	15-003364	Warrendale	7
22093541.	6414 Plainview	6/5/2015	15-003364	Warrendale	7
22098700.	6401 Vaughan	6/5/2015	15-003364	Warrendale	7
13008715.	3200 E Outer Drive	5/29/2015	15-003391	Farwell	3
13008917.	1637 E Outer Drive	5/29/2015	15-003391	Butler	3
13008972.002	2217 E Outer Drive	5/29/2015	15-003391	Farwell	3
13008916.	1631 E Outer Drive	5/29/2015	15-003391	Butler	3
16030581.	20415 Roselawn	6/26/2015	15-003585	Pembroke	2
16030614.003	19957 Roselawn	6/26/2015	15-003585	Pembroke	2
16030606.	20037 Roselawn	6/26/2015	15-003585	Pembroke	2
22094877.	6311 Plainview	6/12/2015	15-004152	Warrendale	7
22094874.	6333 Plainview	6/12/2015	15-004152	Warrendale	7
22094956.	6394 Evergreen	6/12/2015	15-004152	Warrendale	7
16035852.	20185 Indiana	6/26/2015	15-004241	Pembroke	2
22095655.	15754 Evergreen	6/12/2015	15-004419	Minock Park	1
22091226.	15411 Minock	6/12/2015	15-004419	Minock Park	1
22095588.	14394 Evergreen	6/19/2015	15-004435	Westwood Park	1
22095577.	14352 Evergreen	6/19/2015	15-004435	Westwood Park	1
22124795-7	11915 W Outer Drive	6/26/2015	15-004473	Brightmoor	1
22125839.	11480 W Outer Drive	6/26/2015	15-004473	Brightmoor	1
22090809.	14350 Minock	6/12/2015	15-004454	Westwood Park	1
21073296.	9843 Yorkshire	8/7/2015	15-004753	Yorkshire Woods	4
21074131.	9251 Grayton	7/31/2015	15-004753	Yorkshire Woods	4
21074897.	10706 Meuse	7/17/2015	15-004817	Yorkshire Woods	4
21074057.	9148 Grayton	7/17/2015	15-004817	Yorkshire Woods	4
16032065.	20501 Northlawn	6/12/2015	15-004725	Pembroke	2
21074116.	10091 Grayton	7/31/2015	15-004680	Yorkshire Woods	4
21074120.	10061 Grayton	7/31/2015	15-004680	Yorkshire Woods	4
21074077.	10028 Grayton	7/24/2015	15-004680	Yorkshire Woods	4
21074088.	10106 Grayton	7/31/2015	15-004680	Yorkshire Woods	4
21072905.	9801 Kensington	7/24/2015	15-004680	Yorkshire Woods	4
21072690.	9730 Everts	7/24/2015	15-004680	Yorkshire Woods	4
21074067.	9228 Grayton	7/24/2015	15-004680	Yorkshire Woods	4
21074130.	9261 Grayton	7/24/2015	15-004680	Yorkshire Woods	4
21067891.	10910 Balfour	6/19/2015	15-004644	Yorkshire Woods	4
21073689.	9217 Bishop	6/19/2015	15-004644	Yorkshire Woods	4

21073693.	9183 Bishop	6/19/2015	15-004644	Yorkshire Woods	4
16036740.	20166 Kentucky	7/2/2015	15-005127	Pembroke	2
17007411.	4841 Iroquois	8/21/2015	15-005140	Pingree Park	5
13003533.	1761 E Grand Blvd	7/17/2015	15-005140	Poletown East	5
13003556.	1859 E Grand Blvd	7/17/2015	15-005140	Poletown East	5
13003572.	1910 E Grand Blvd	7/17/2015	15-005140	Poletown East	5
15013039.	534 Bellevue	9/11/2015	15-005160	Islandview	5
15013524.	1768 Meldrum	8/21/2015	15-005160	Islandview	5
21024703.	16280 Rossini Drive	6/26/2015	15-005218	Regent Park	3
21025028.001	15853 Rossini Drive	6/26/2015	15-005218	Regent Park	3
16033322.	16129 Cherrylawn	6/26/2015	15-005502	Fitzgerald/Marygrove	2
18014823.	8343 Northlawn	6/19/2015	15-005499	Barton-McFarland	7
18015801.	8155 Kentucky	6/19/2015	15-005499	Barton-McFarland	7
21067917.015L	11484 Balfour	8/21/2015	15-005451	Moross-Morang	4
18014281.	8357 Roselawn	6/26/2015	15-005451	Barton-McFarland	7
18014300.	8223 Roselawn	6/26/2015	15-005451	Barton-McFarland	7
18014588.	8258 Northlawn	6/26/2015	15-005451	Barton-McFarland	7
18014587.	8250 Northlawn	6/26/2015	15-005451	Barton-McFarland	7
18016472.	8203 Normile	6/26/2015	15-005451	Aviation Sub	7
18016417.	8202 Normile	7/17/2015	15-005451	Aviation Sub	7
18014367.	8362 Cloverlawn	6/26/2015	15-005451	Barton-McFarland	7
18014353.	8264 Cloverlawn	6/26/2015	15-005451	Barton-McFarland	7
18014330.	8066 Cloverlawn	6/26/2015	15-005451	Barton-McFarland	7
21025535.	16400 Eastburn	7/2/2015	15-005504	Regent Park	3
21024575-6	16005 E State Fair	7/2/2015	15-005504	Regent Park	3
21024574.	15919 E State Fair	7/2/2015	15-005504	Regent Park	3
21071642.	9151 Courville	8/14/2015	15-005669	Outer Drive-Hayes	4
20014845.	1106 Patricia	7/17/2015	15-005836	Boynton	6
18014807.	8587 Northlawn	7/2/2015	15-005836	Barton-McFarland	7
09006975-7	961 E Savannah	7/17/2015	15-006012	Hawthorne Park	3
09022748.	19350 Omira	7/17/2015	15-006012	Nolan	3
22062059.	13935 Asbury Park	7/17/2015	15-006087	Grandmont	1
22081322.	6371 Brace	7/17/2015	15-006218	Warrendale	7
22074639.	6256 Ashton	7/17/2015	15-006218	Warrendale	7
22076025.	6075 Ashton	7/17/2015	15-006218	Warrendale	7
22080757.	6371 Greenview	7/17/2015	15-006218	Warrendale	7
22084046.	6451 Stahelin	7/24/2015	15-006436	Warrendale	7
22084038.	6515 Stahelin	7/24/2015	15-006436	Warrendale	7
22084033.	6703 Stahelin	7/24/2015	15-006436	Warrendale	7
22084032.	6715 Stahelin	7/24/2015	15-006436	Warrendale	7

13003550.	1833 E Grand Blvd	9/11/2015	15-006496	Poletown East	5
21080595.	10741 E Outer Drive	8/14/2015	15-006871	Morningside	4
18015435.	8243 Wisconsin	7/31/2015	15-006876	Barton-McFarland	7
06002097.	1493 Lee Pl	12/5/2014	14-009142	Herman Kiefer	5
16016712.	840 Dagoon	1/15/2016	15-014300	Central Southwest	6
22006674-84	16530 Fullerton	8/7/2015	15-006871	Schoolcraft Southfield	1
03001849.001	7414 Beaubien	10/16/2015	15-007088	North End	5
22090368.	6067 Westwood	10/31/2014	14-010109	Warrendale	7
21020537.	13405 Greiner	11/14/2014	14-011743	Franklin	3
22093856-7	14020 Plainview	6/19/2015	15-004435	Westwood Park	1
16026542.	17377 Pennington	8/1/2014	15-015280	Bagley	2
16036851.	18935 Kentucky	10/31/2014	14-010109	Bagley	2
22118042.	7645 Bramell	1/9/2015	14-011784	Far West Detroit	7
22089090.	6213 Grandville	9/26/2014	14-009594	Warrendale	7
17011077.	1094 Baldwin	2/6/2015	14-013148	Islandview	5
02003868.	18994 Oak Dr	5/15/2015	14-014813	University District	2
22090385.	5860 Minock	10/10/2014	14-008871	Warrendale	7
16032843.	16128 Cherrylawn	12/19/2014	14-011991	Fitzgerald/Marygrove	2
21073175.	4842 Yorkshire	9/12/2014	14-008089	East English Village	4
21062129.	3768 Ashland	6/5/2015	15-002659	Fox Creek	4
21068670.	9754 Camley	5/22/2015	15-002557	Moross-Morang	4
22092568.	15820 Auburn	7/31/2015	15-004419	Minock Park	1
22061314.	14310 Asbury Park	7/17/2015	15-006087	Greenfield-Grand River	1
22058119.	6919 Mansfield	2/13/2015		Warren Ave Community	7
01000568.	216 Winder	9/8/2015	15-005160	Brush Park	5
22079552.	6500 Greenview	7/24/2015	15-006436	Warrendale	7
08003054.	1606 Chicago	1/29/2016	15-013531	Boston Edison	5
22060557.	14217 Mettetal	3/11/2016	15-013681	Greenfield-Grand River	1
22060557.	14217 Mettetal	1/22/2016	15-013681	Greenfield-Grand River	1
21072929.	9131 Kensington	1/8/2016	15-013856	Yorkshire Woods	4
20001830.	8858 Fulton	3/25/2016	14-008619	Springwells	6
20001830.	8858 Fulton	9/5/2014	14-008619	Springwells	6
21027622.	14181 Carlisle	9/26/2014	14-008390	Mohican Regent	3
10008742.	8604 La Salle Blvd	8/7/2015	14-012060	North LaSalle	5
22072701.	16729 Fenmore	5/29/2015	15-001927	Crary/St Marys	1
04002430.	621 Clairmount	8/7/2015	15-002240	Piety Hill	5
22080410.	14557 Greenview	6/12/2015	15-004454	Rosedale Park	1
16040524.	19999 Ilene	8/7/2015	15-005127	Pembroke	2

16042265.	20460 Birwood	7/2/2015	15-005127	Pembroke	2
13005968.	5598 Talbot	6/26/2015	15-005218	Buffalo Charles	3
13003832.	3156 E Edsel Ford	4/1/2016	15-005520	Poletown East	5
02006164.	2717 W Eight Mile	7/24/2015	15-005830	Green Acres	2
16033297.	16537 Cherrylawn	9/4/2015	15-005818	Fitzgerald/Marygrove	2
21024783.	15300 Rossini Drive	8/7/2015	15-006855	Regent Park	3
21074782.	9241 Boleyn	7/22/2016	15-008815	Yorkshire Woods	4
21073338.	5911 Yorkshire	9/4/2015	15-008815	East English Village	4
22089417.005	11636 Westwood	9/4/2015	15-009089	Weatherby	7
22093023.	6445 Auburn	11/13/2015	15-011368	Warrendale	7
02003965.	17176 Warrington	11/13/2015	15-011651	University District	2
16030726.	17545 Roselawn	11/13/2015	15-011651	Bagley	2
22054355.	17213 Forrer	12/18/2015	15-012753	College Park	2
16032202.	18105 Northlawn	12/18/2015	15-013074	Bagley	2
02004189.	18905 Warrington	4/29/2016	15-014951	University District	2
16034198.	17521 Ohio	3/4/2016	15-015280	Bagley	2
16030614.002	19965 Roselawn	4/29/2016	16-000476	Pembroke	2
10002621.	2277 Longfellow	10/24/2014	16-006394	Boston Edison	5
22116617.	7485 Lamphere	9/9/2016	16-006158	Far West Detroit	7
22116617.	7485 Lamphere	7/22/2016	16-006158	Far West Detroit	7
22090397.	6050 Minock	4/17/2015	14-011784	Warrendale	7
14005213.	4002 Buena Vista	6/26/2015	14-012389	Russell Woods	7
04002685.	610 Longfellow	1/8/2016		Boston Edison	5
02005988.	20165 Sheffield Rd	3/4/2016	14-015553	Green Acres	2
22023988.	18301 Sorrento	11/13/2015	15-001641	Schulze	2
22076493.	15892 Rosemont	5/22/2015	15-001927	North Rosedale Park	1
18015759.	8631 Kentucky	7/17/2015	15-005499	Barton-McFarland	7
18015782.	8329 Kentucky	6/19/2015	15-005499	Barton-McFarland	7
22071200.	14394 Archdale	7/24/2015	15-006087	Grandmont	1
22061424.	16710 Asbury Park	8/21/2015	15-007399	Crary/St Marys	1
22057326.	16768 Mansfield	9/11/2015	15-007993	Crary/St Marys	1
22059016.	16559 St Marys	8/28/2015	15-008194	Crary/St Marys	1
16020576.	17321 Santa Rosa	11/13/2015	15-011959	Bagley	2
22076851.	18627 Rosemont	1/22/2016	15-012152	Evergreen-Outer Drive	1
16019457.	17309 Stoepel	3/11/2016	15-013074	Bagley	2
16040463.	20400 Ilene	4/15/2016	16-000476	Pembroke	2
22109816.	16594 Westbrook	8/19/2016	16-007129	Riverdale	1
22063132.	6455 Woodmont	9/2/2016	14-009875	Warren Ave Community	7
22063132.	6455 Woodmont	8/19/2016	14-009875	Warren Ave Community	7

22095677.	16580 Evergreen	8/7/2015	15-001927	North Rosedale Park	1
04002243.	843 Gladstone	8/7/2015	15-002188	Piety Hill	5
01002345.	421 Marston	7/31/2015	15-007106	North End	5
22092168.	6914 Auburn	6/24/2016	15-011368	Warrendale	7
22092168.	6914 Auburn	11/13/2015	15-011368	Warrendale	7
03001876.003	543 Custer	9/2/2016	15-015731	North End	5
03001876.003	543 Custer	8/19/2016	15-015731	North End	5
15013486.	1060 Meldrum	2/5/2016	15-015731	Islandview	5
14004593.	4754 Cortland	9/2/2016	15-016015	Russell Woods	7
14004593.	4754 Cortland	8/19/2016	15-016015	Russell Woods	7
22060000.	15774 Murray Hill	9/2/2016	16-000316	Crary/St Marys	1
22106896.	16195 Pierson	9/2/2016	16-007129	Riverdale	1
22106896.	16195 Pierson	8/19/2016	16-007129	Riverdale	1
21067893.	10924 Balfour	7/31/2015	15-004644	Yorkshire Woods	4
21074838.	10155 Britain	2/26/2016	15-014591	Yorkshire Woods	4
21067827.	10296 Balfour	2/26/2016	15-015280	Yorkshire Woods	4
21073301.	9801 Yorkshire	2/26/2016	15-015321	Yorkshire Woods	4
22116615.	7501 Lamphere	7/18/2016	16-006394	Far West Detroit	7
08002818.	1706 Atkinson	12/11/2015	15-013140	Historic Atkinson	5
18015788.	8285 Kentucky	3/4/2016	15-013656	Barton-McFarland	7
01002991.	156 Leicester Ct	6/30/2015	15-002242	North End	5
22094985.	6748 Evergreen	6/5/2015	15-003346	Warrendale	7
22094845.	6537 Plainview	12/11/2015	15-003364	Warrendale	7
22092158.	6844 Auburn	12/11/2015	15-004152	Warrendale	7
16021431.	19792 Monica	3/11/2016	15-005830	Pembroke	2
21025173.	15610 Fairmount Dr	9/11/2015	15-006855	Regent Park	3
22064443.	16719 Biltmore	8/21/2015	15-007399	Crary/St Marys	1
21074178.	5785 Grayton	9/4/2015	15-008815	East English Village	4
16023104.	19725 Prairie	6/29/2016	16-000476	Pembroke	2
06001800.	1494 Virginia Park	3/13/2015		West Virginia Park	5
01004353.	9512 Woodward Avenue	12/4/2015	15-013191	North End	5
04002787.	710 Glynn Ct	12/11/2015	15-013140	Gateway Community	5
06002496.	1540 Longfellow	2/26/2016	15-013531	Boston Edison	5
06002496.	1540 Longfellow	10/24/2014	15-013531	Boston Edison	5
21068139.	11100 Mckinney	2/26/2016	15-013533	Moross-Morang	4
21068269.	9949 Mckinney	1/8/2016	15-013856	Yorkshire Woods	4
21073259.	9172 Yorkshire	1/8/2016	15-013856	Yorkshire Woods	4
21071908.	5502 Audubon	1/8/2016	15-013856	Morningside	4
16023139.	18951 Prairie	10/31/2014	14-010109	Bagley	2
16021390.	18984 Monica	10/31/2014	14-010109	Bagley	2

21027732.	16103 Carlisle	2/27/2015	14-015324	Regent Park	3
06002309.	1139 Atkinson	2/13/2015	14-014813	Historic Atkinson	5
14008332.	389 W Grand Blvd	2/20/2015	14-015180	Hubbard Farms	6
22030216.	18708 Schaefer	11/20/2015	15-001403	Schulze	2
22030216.	18708 Schaefer	11/6/2015	15-001403	Schulze	2
10002715.	2504 Chicago	8/14/2015	14-014141	Boston Edison	5
10002696.	2475 Chicago	5/1/2015	14-014141	Boston Edison	5
10002695.	2465 Chicago	2/13/2015	14-014141	Boston Edison	5
10002776.	2485 W Boston Blvd	8/7/2015	14-014465	Boston Edison	5
17011103.	1722 Baldwin	1/23/2015	14-013197	Islandview	5
16013339.	1215 Junction	4/3/2015	15-000395	Central Southwest	6
08000654-5	1535 Spruce	3/13/2015	15-000182	North Corktown	6
21026153.	13871 Bringard Dr	3/11/2016	14-011515	Mohican Regent	3
21063189.	1629 Alter	11/14/2014	14-011783	Fox Creek	4
13006815.	5116 Charles	4/10/2015	15-000699	Buffalo Charles	3
20004472.	2501 Woodmere	5/1/2015	15-001627	Springwells	6
02001462.	10 Atkinson	6/12/2015	15-002133	Piety Hill	5
04002226.	653 Gladstone	8/7/2015	15-002188	Piety Hill	5
01002284.	301 Chandler	8/7/2015	15-002240	North End	5
01004318.002L	36 Mt Vernon	8/14/2015	15-002535	North End	5
21068527.011	10476 Duprey	5/22/2015	15-002557	Moross-Morang	4
22094830.	6789 Plainview	6/12/2015	15-004152	Warrendale	7
16033993.	20000 Ohio	4/15/2016	15-004241	Pembroke	2
22090773.	14028 Minock	6/19/2015	15-004435	Westwood Park	1
22076446.	14872 Rosemont	6/12/2015	15-004454	Rosedale Park	1
21067829.	10310 Balfour	7/31/2015	15-004680	Yorkshire Woods	4
01004056.002	3418 John R	9/11/2015	15-005140	Brush Park	5
17007415.	4805 Iroquois	8/21/2015	15-005140	Pingree Park	5
21024737.	15872 Rossini Drive	6/26/2015	15-005218	Regent Park	3
21025151.	16000 Fairmount Dr	7/24/2015	15-005504	Regent Park	3
02005326.	19778 Chesterfield	11/13/2015	15-005830	Sherwood Forest	2
19009225.	6256 Rohns	9/11/2015	15-005669	Airport Sub	5
22051788.	14208 Winthrop	7/31/2015	15-006192	Greenfield-Grand River	1
21024806.	14988 Rossini Drive	5/31/2016	15-006855	Regent Park	3
21024806.	14988 Rossini Drive	7/24/2015	15-006855	Regent Park	3
22066211.	12250 Abington Ave	2/26/2016	15-006885	Plymouth-196	7
21025410-1	15293 Fairmount Dr	8/28/2015	15-007093	Regent Park	3
03003010.	8431 Oakland	9/4/2015	15-007088	North End	5
22054371.	16855 Forrer	8/28/2015	15-007993	Crary/St Marys	1
20007446.	2526 Pearl	8/28/2015	15-008479	Springwells	6

18007784.	1033 Rademacher	8/28/2015	15-008479	Central Southwest	6
21068525.	10170 Duprey	7/22/2016	15-008815	Yorkshire Woods	4
21068525.	10170 Duprey	2/26/2016	15-008815	Yorkshire Woods	4
16004266.	5009 Ridgewood	9/11/2015	15-009089	Midwest	6
18014524.	8307 Cloverlawn	9/4/2015	15-009089	Barton-McFarland	7
18014529.	8271 Cloverlawn	9/4/2015	15-009089	Barton-McFarland	7
22081938.	14214 Glastonbury	6/10/2016	15-010531	Grandmont #1	1
22088360.	14408 Grandville	10/9/2015	15-010531	Westwood Park	1
17010557.	1714 Seyburn	11/20/2015	15-011659	West Village	5
17012666.	1780 Sheridan	11/20/2015	15-011659	Islandview	5
12009732.	380 W Grand Blvd	12/11/2015	15-011959	Mexicantown	6
16032891.	17336 Cherrylawn	12/4/2015	15-011959	Bagley	2
22023959.	18691 Sorrento	12/18/2015	15-012753	Schulze	2
20005464.	2779 Springwells	12/11/2015	15-013078	Springwells	6
16033185.	18933 Cherrylawn	4/29/2016	15-014272	Bagley	2
18000885.	7266 Logan	1/15/2016	15-014300	Springwells	6
01002393.	8268 John R	3/4/2016	15-014682	North End	5
08005700.	7395 Woodrow Wilson	3/4/2016	15-014682	Henry Ford	5
16035150.	16261 Wisconsin	3/4/2016	15-014951	Fitzgerald/Marygrove	2
13021507.	18544 Wexford	3/4/2016	15-014974	Conant Gardens	3
14004647.	3734 Cortland	3/11/2016	15-016015	Russell Woods	7
22055029.	16540 Prevost	4/1/2016	15-016206	Crary/St Marys	1
01004056.003	3422 John R	3/25/2016	15-016206	Brush Park	5
01004056.004L	3426 John R	3/25/2016	15-016206	Brush Park	5
05003805.	7509 Chrysler	3/25/2016	15-016525	North End	5
22106894.	16217 Pierson	8/19/2016	16-007129	Riverdale	1
13006549.	4468 Sobieski	3/25/2016	16-008681	Buffalo Charles	3
22109302.	16595 Blackstone	7/25/2014	16-008681	Riverdale	1
22109302.	16595 Blackstone	7/25/2014	16-008681	Riverdale	1
22060532.	14457 Mettetal	1/22/2016		Greenfield-Grand River	1
06002557.	1546 Chicago	1/8/2016	15-013140	Boston Edison	5
16033922.	18428 Ohio	6/17/2016	15-013859	Bagley	2
16033922.	18428 Ohio	6/6/2016	15-013859	Bagley	2
22070867.	6521 Longacre	10/10/2014	14-009875	Warren Ave Community	7
21025815.	15295 Eastburn	2/27/2015	14-015324	Regent Park	3
21053602.	350 Newport	12/12/2014	14-011206	Jefferson Chalmers	4
22023220.	6476 Oakman Blvd	12/12/2014	14-011784	Aviation Sub	7
22070833.	6913 Longacre	12/19/2014	14-009954	Warren Ave Community	7

22055681.	6906 Rutherford	11/14/2014	14-010207	Warren Ave Community	7
20002357.	8741 Chamberlain	9/26/2014	14-008619	Springwells	6
13021148.	18614 Binder	1/13/2016	14-013490	Conant Gardens	3
13021148.	18614 Binder	5/1/2015	14-013490	Conant Gardens	3
08002788.	2075 Atkinson	1/16/2015	14-012777	Historic Atkinson	5
22028773.	17140 Hartwell	12/4/2015	15-001403	Schulze	2
22028773.	17140 Hartwell	11/20/2015	15-001403	Schulze	2
22107716.001	16100 Burt Rd	7/18/2014	14-006593	Riverdale	1
16030333.	16182 Roselawn	2/13/2015	14-005074	Fitzgerald/Marygrove	2
16031850.	16230 Northlawn	1/9/2015	14-012465	Fitzgerald/Marygrove	2
09006146.	2110 Dearing	4/29/2016	14-011991	Campau/Banglatown	3
22108555.	16524 Trinity	12/5/2014	14-011991	Riverdale	1
21074214.	5097 Grayton	2/6/2015	14-014427	East English Village	4
16042420.	17335 Birwood	12/5/2014	14-009969	Schulze	2
22065973.	6800 Abington Ave	10/17/2014	14-009331	Warren Ave Community	7
20004986.	1817 Central	5/29/2015	15-001847	Springwells	6
22076980.	15751 Rosemont	5/22/2015	15-001927	North Rosedale Park	1
01002168.007L	7631 Brush	5/21/2015	15-002133	North End	5
04002277.006L	800 Gladstone	5/29/2015	15-002188	Piety Hill	5
21068137.	11084 Mckinney	6/19/2015	15-002549	Moross-Morang	4
21067901.	11168 Balfour	6/5/2015	15-002549	Moross-Morang	4
21080874.	8420 E Outer Drive	5/1/2015	15-002659	Wade	4
08007056.	5278 Avery	6/12/2015	15-003295	Woodbridge	6
12012474.	16156 Holmur	7/17/2015	15-003295	Martin Park	2
15008055.	551 E Grand Blvd	6/5/2015	15-003406	Islandview	5
21073299.	9819 Yorkshire	8/7/2015	15-004753	Yorkshire Woods	4
21067874.	10764 Balfour	8/7/2015	15-004753	Yorkshire Woods	4
16036700.	19204 Kentucky	9/18/2015	15-005127	Bagley	2
16043167.	20515 Mendota	7/17/2015	15-005127	Pembroke	2
13006880.	3842 Charles	7/31/2015	15-005143	Buffalo Charles	3
21024697.	16400 Rossini Drive	7/2/2015	15-005504	Regent Park	3
16025686.	19360 San Juan	9/18/2015	15-005830	Bagley	2
22053077.	14160 Montrose	7/31/2015	15-006087	Greenfield-Grand River	1
22059856.	13928 Mettetal	7/31/2015	15-006087	Greenfield-Grand River	1
22064859.	13974 Grandmont	7/24/2015	15-006087	Grandmont	1
22080726.	6769 Greenview	7/31/2015	15-006218	Warrendale	7
22080382.	14965 Greenview	9/11/2015	15-006496	Rosedale Park	1
22053907.	14390 Forrer	9/11/2015	15-006496	Greenfield-Grand River	1

21081019.	9964 E Outer Drive	8/14/2015	15-006871	Outer Drive-Hayes	4
21024517.	15273 E State Fair	7/31/2015	15-006876	Regent Park	3
21073162.	4480 Yorkshire	2/26/2016	15-007093	East English Village	4
21075289.	5217 Cadieux	8/14/2015	15-007093	East English Village	4
03002014.	618 Marston	9/4/2015	15-007088	North End	5
22061414.	16566 Asbury Park	8/21/2015	15-007399	Crary/St Marys	1
22066801.	16744 Lindsay	9/11/2015	15-007993	Crary/St Marys	1
22060018.	16124 Murray Hill	9/11/2015	15-007993	Crary/St Marys	1
16022716.	15388 Prairie	8/28/2015	15-008160	Fitzgerald/Marygrove	2
16026355.	18974 Pennington	10/30/2015	15-010531	Bagley	2
16035965.	18061 Indiana	10/30/2015	15-010531	Bagley	2
22094482-4	14427 Plainview	12/4/2015	15-011650	Westwood Park	1
16019436.	17551 Stoepel	11/13/2015	15-011651	Bagley	2
16023223.	17335 Prairie	11/13/2015	15-011651	Bagley	2
16031863.	16558 Northlawn	6/13/2014	15-011959	Fitzgerald/Marygrove	2
16028792.	17417 Woodingham	11/13/2015	15-011959	Bagley	2
16019064.	17380 Stoepel	11/13/2015	15-011959	Bagley	2
16035113.	17393 Wisconsin	12/18/2015	15-012753	Bagley	2
21075992.	9221 Woodhall	12/4/2015	15-013138	Yorkshire Woods	4
21067935.008	11435 Balfour	12/18/2015	15-013138	Moross-Morang	4
08005723.	7432 Churchill	3/4/2016	15-014682	Henry Ford	5
21073436.	3927 Yorkshire	1/15/2016	15-014951	East English Village	4
21074391.	4254 Harvard Rd	1/15/2016	15-014951	East English Village	4
14005236.	3775 Tyler	3/11/2016	15-016015	Russell Woods	7
16043862.	17134 Pinehurst	4/15/2016	15-016302	Schulze	2
22056075.	16864 Rutherford	9/25/2015		Crary/St Marys	1
18010147.	2512 Honorah	5/29/2015		Springwells	6
22059497.	6731 St Marys	10/17/2014	14-009545	Warren Ave Community	7
16004076.	4911 Underwood	8/7/2015	15-006885	Midwest	6
22060439.	15809 Murray Hill	9/11/2015	15-007993	Crary/St Marys	1
22090295.	6803 Westwood	11/13/2015	15-011368	Warrendale	7
21009348.	16545 Chandler Park Dr	7/22/2016	15-015321	East English Village	4
01004352.	9504 Woodward Avenue	12/4/2015	15-013191	North End	5
06002308.	1129 Atkinson	1/8/2016	15-013140	Historic Atkinson	5
01003071.	92 Kenilworth	1/8/2016	15-013140	North End	5
16022837.	17336 Prairie	12/18/2015	15-013140	Bagley	2
03002114.	650 Melbourne	2/26/2016	15-013531	North End	5
16003953-63	4900 Dailey	1/15/2016	15-013533	Midwest	6
21024102.	14220 E State Fair	12/18/2015	15-013533	Franklin	3

18015597.	8279 Indiana	3/4/2016	15-013656	Barton-McFarland	7
18014604.	8500 Northlawn	1/8/2016	15-013656	Barton-McFarland	7
18014527.	8287 Cloverlawn	1/8/2016	15-013656	Barton-McFarland	7
18014561.	8032 Northlawn	1/8/2016	15-013656	Barton-McFarland	7
18014883.	8158 Ohio	1/8/2016	15-013656	Barton-McFarland	7
18015789.	8279 Kentucky	1/8/2016	15-013656	Barton-McFarland	7
21054368-9	207 Newport	1/8/2016	15-013681	Jefferson Chalmers	4
22053214.	14127 Montrose	1/8/2016	15-013681	Greenfield-Grand River	1
22052393.	14337 Winthrop	12/18/2015	15-013681	Greenfield-Grand River	1
22061783.	18929 Asbury Park	4/29/2016	15-013859	College Park	2
22060083.	17182 Murray Hill	3/11/2016	15-013859	College Park	2
16022925.	18978 Prairie	3/11/2016	15-013859	Bagley	2
16034163.	18257 Ohio	3/11/2016	15-013859	Bagley	2
22060080.	17158 Murray Hill	3/11/2016	15-013859	College Park	2
21067841-2	10446 Balfour	6/17/2016	15-013856	Yorkshire Woods	4
21074524.	10276 Harvard Rd	1/8/2016	15-013856	Yorkshire Woods	4
21074847.	10089 Britain	1/8/2016	15-013856	Yorkshire Woods	4
21074738.	9156 Boleyn	1/8/2016	15-013856	Yorkshire Woods	4
21053515.	429 Eastlawn	1/8/2016	15-013856	Jefferson Chalmers	4
21067823.	10266 Balfour	1/8/2016	15-013856	Yorkshire Woods	4
06001854.	1429 W Euclid	12/19/2014	14-009142	Herman Kiefer	5
21026040.	15044 Bringard Dr	1/15/2016	14-015553	Regent Park	3
22053504.	6751 Montrose	2/27/2015	14-015324	Warren Ave Community	7
21027447.	15474 Carlisle	2/27/2015	14-015324	Regent Park	3
21025879.	16241 Eastburn	2/27/2015	14-015324	Regent Park	3
21025877.	16229 Eastburn	11/13/2015	14-015324	Regent Park	3
21052743.	350 Eastlawn	11/21/2014	14-011206	Jefferson Chalmers	4
08005752.	7349 Churchill	5/13/2016	14-015473	Henry Ford	5
08005753.002L	7343 Churchill	3/13/2015	14-015473	Henry Ford	5
22075073.	15722 Ashton	7/24/2015	14-011784	North Rosedale Park	1
17005411.	8189 Bliss	12/5/2014	14-011784	Nortown	3
22081921.	14040 Glastonbury	7/24/2015	14-011743	Grandmont #1	1
17015145.	18461 Teppert	11/14/2014	14-011743	Mount Olivet	3
08002808.	1936 Atkinson	8/28/2015	14-007685	Historic Atkinson	5
08002794.	2050 Atkinson	1/16/2015	14-007685	Historic Atkinson	5
16025959.	17185 San Juan	8/1/2014	14-007347	Bagley	2
22109195.	16216 Blackstone	12/5/2014	14-011223	Riverdale	1
20008100.	1942 Sharon	12/5/2014	14-010207	Springwells	6
22112278.	16801 Burgess	11/14/2014	14-010207	Riverdale	1

13023461.	19000 Charest	6/12/2015	14-013490	Conant Gardens	3
13022736.	18515 Revere	2/6/2015	14-013490	Conant Gardens	3
13022435.	18568 Revere	2/6/2015	14-013490	Conant Gardens	3
13023066.	18663 Klinger	1/30/2015	14-013490	Conant Gardens	3
22061339.	14552 Asbury Park	1/30/2015	14-013750	Greenfield-Grand River	1
22058584.	14526 St Marys	1/30/2015	14-013750	Greenfield-Grand River	1
08006580.	2709 Cochrane	1/30/2015	14-014971	North Corktown	6
16025861.	18917 San Juan	1/30/2015	14-014971	Bagley	2
16028470.	18260 Woodingham	2/20/2015	14-014813	Bagley	2
08007054.	5268 Avery	1/23/2015	14-013807	Woodbridge	6
18018527.	8083 Manor	1/23/2015	14-013807	Aviation Sub	7
18018522.	8103 Manor	1/23/2015	14-013807	Aviation Sub	7
13005798.	5098 Casmere	2/20/2015	14-015180	Buffalo Charles	3
08002799.	2010 Atkinson	1/16/2015	14-012726	Historic Atkinson	5
06002335.	1493 Atkinson	1/16/2015	14-012726	Historic Atkinson	5
22106565.	16574 Pierson	8/8/2014	14-006593	Riverdale	1
22103036.	16537 Fielding	7/18/2014	14-006593	Riverdale	1
16041268.	18452 Griggs	8/7/2015	14-009774	Schulze	2
13021143-5	18572 Binder	2/6/2015	14-013500	Conant Gardens	3
14005407.	4310 Waverly	12/18/2015	14-013500	Russell Woods	7
14012153.	12716 Broadstreet	12/19/2014	14-012119	Russell Woods	7
13005888.	5175 Casmere	4/24/2015	14-014465	Buffalo Charles	3
14005391.	4331 Waverly	1/9/2015	14-012465	Russell Woods	7
01003151.	231 Westminster	1/16/2015	14-013092	North End	5
08005696.	7423 Woodrow Wilson	6/3/2016	15-000218	Henry Ford	5
22086501.	13577 Warwick	4/17/2015	15-000218	Schoolcraft Southfield	1
22083023.	13564 Stahelin	4/17/2015	15-000218	Schoolcraft Southfield	1
15007557.	394 E Grand Blvd	3/16/2015	14-013197	Islandview	5
17011736.	1451 Baldwin	1/23/2015	14-013197	Islandview	5
22090384.	5852 Minock	9/19/2014	14-008871	Warrendale	7
22084065.	6267 Stahelin	10/10/2014	14-008871	Warrendale	7
22029619-21	8638 Schaefer	12/5/2014	14-011465	Joy-Schaefer	7
22029518.	8001 Hartwell	11/14/2014	14-011465	Joy-Schaefer	7
22020776.	8612 Appoline	11/14/2014	14-011465	Aviation Sub	7
16016717.	1026 Dagoon	4/3/2015	15-000395	Central Southwest	6
22077747.	13530 Penrod	4/3/2015	15-000182	Schoolcraft Southfield	1
21054458.	598 Lakewood	3/20/2015	15-000182	Jefferson Chalmers	4
08005595.	7369 Poe	3/13/2015	15-000182	Henry Ford	5
13016073.	13127 Moenart	3/13/2015	15-000182	Buffalo Charles	3

16016421.	1583 Military	7/24/2015	15-000396	Central Southwest	6
22084539-40	13514 Artesian	3/20/2015	15-000233	Schoolcraft Southfield	1
22079799.	13570 Greenview	4/3/2015	15-000233	Schoolcraft Southfield	1
16036961.	16559 Kentucky	5/1/2015	14-012441	Fitzgerald/Marygrove	2
13014164.	13284 Caldwell	3/4/2016	14-011086	Buffalo Charles	3
13016068.	13165 Moenart	12/12/2014	14-011086	Buffalo Charles	3
13014164.	13284 Caldwell	11/21/2014	14-011086	Buffalo Charles	3
13006129.	3964 Eldridge	11/21/2014	14-011086	Buffalo Charles	3
13006107.	5130 Eldridge	11/21/2014	14-011086	Buffalo Charles	3
13006106.	5158 Eldridge	11/21/2014	14-011086	Buffalo Charles	3
16039321.	17414 Washburn	1/9/2015	14-011991	Schulze	2
16026271.	17522 Pennington	12/5/2014	14-011991	Bagley	2
21068410.010	10944 Peerless	12/12/2014	14-011991	Moross-Morang	4
06001939.	1449 W Philadelphia	8/28/2015	14-014427	Herman Kiefer	5
06001957.	1555 W Philadelphia	8/7/2015	14-014427	Herman Kiefer	5
20002126.	8782 Olivet	1/16/2015	14-008912	Springwells	6
16034823.	18004 Wisconsin	10/30/2015	14-008912	Bagley	2
16039957.	12611 Washburn	1/9/2015	14-012060	Grand River-I96	7
21055631-3	20020 Regent Dr	9/12/2014	14-008644	Mohican Regent	3
22054825.	6731 Forrer	10/24/2014	14-009331	Warren Ave Community	7
22054812.	6821 Forrer	10/24/2014	14-009331	Warren Ave Community	7
22090730.	12028 Minock	4/3/2015	15-000696	Weatherby	7
13021121.	18060 Binder	3/4/2016	15-000699	Conant Gardens	3
18000553.	7118 W Lafayette	4/10/2015	15-000699	Central Southwest	6
22090724.	11720 Minock	5/22/2015	15-001017	Weatherby	7
20003434.	8374 Lane	5/1/2015	15-001627	Springwells	6
20008454.	2300 Woodmere	6/5/2015	15-001643	Springwells	6
20008454.	2300 Woodmere	12/11/2015	15-001643	Springwells	6
22028853.	18652 Hartwell	12/18/2015	15-001641	Schulze	2
02001309.	51 Blaine	8/28/2015	15-001641	Piety Hill	5
22028772.	17130 Hartwell	6/19/2015	15-001641	Schulze	2
20003545.	8336 Cahalan	6/12/2015	15-001641	Springwells	6
20006740.	2588 Casper	3/4/2016	15-001847	Springwells	6
22071283.003L	17550 Pilgrim	6/3/2016	15-001927	Crary/St Marys	1
22104026.	16732 Patton	3/4/2016	15-001927	Miller Grove	1
22096293-4	16601 Evergreen	3/4/2016	15-001927	Miller Grove	1
22081831.	16551 Avon	3/4/2016	15-001927	North Rosedale Park	1
22096293-4	16601 Evergreen	6/26/2015	15-001927	Miller Grove	1
22071283.003L	17550 Pilgrim	5/22/2015	15-001927	Crary/St Marys	1

20003430.	8396 Lane	6/12/2015	15-002010	Springwells	6
16021611.	18985 Monica	12/5/2014	14-010502	Bagley	2
22083144.	16500 Stahelin	8/7/2015	15-002240	North Rosedale Park	1
08002766.	1721 Atkinson	9/25/2015	14-014085	Historic Atkinson	5
08002132.	1623 W Philadelphia	1/23/2015	14-014085	Herman Kiefer	5
06001949.	1509 W Philadelphia	1/23/2015	14-014085	Herman Kiefer	5
06002104.	1541 Lee Pl	1/23/2015	14-014085	Herman Kiefer	5
20001916.	8113 Witt	6/5/2015	15-002553	Central Southwest	6
22077108.	12943 Rosemont	5/29/2015	15-002553	Schoolcraft Southfield	1
21068607.	9350 Sanilac	6/5/2015	15-002549	Moross-Morang	4
21075997.	9181 Woodhall	6/5/2015	15-002549	Yorkshire Woods	4
21068545.022	10619 Duprey	6/5/2015	15-002610	Moross-Morang	4
01003056.	256 Kenilworth	1/8/2016	15-002535	North End	5
01002602.	68 E Philadelphia	9/11/2015	15-002535	North End	5
21081044.	10230 E Outer Drive	5/1/2015	15-002557	Outer Drive-Hayes	4
02005898.	20430 Gardendale	6/12/2015	15-002917	Green Acres	2
22069168.	15432 Oakfield	6/19/2015	15-002921	Crary/St Marys	1
22092162.	6872 Auburn	5/22/2015	15-003346	Warrendale	7
22093025.	6429 Auburn	12/4/2015	15-003346	Warrendale	7
13010961.	1988 E Grand Blvd	1/8/2016	15-003406	Poletown East	5
15008078.	405 E Grand Blvd	9/11/2015	15-003406	Islandview	5
13003610.	1730 E Grand Blvd	8/14/2015	15-003406	Poletown East	5
22093576.	6810 Plainview	6/19/2015	15-003364	Warrendale	7
16042285.	20451 Birwood	12/18/2015	15-003898	Pembroke	2
16041416.	20101 Griggs	9/4/2015	15-003898	Pembroke	2
16033082.	20459 Cherrylawn	7/31/2015	15-003898	Pembroke	2
16032109.	19965 Northlawn	7/31/2015	15-003898	Pembroke	2
16043193.	20163 Mendota	12/18/2015	15-004241	Pembroke	2
22092615.	15355 Auburn	6/12/2015	15-004419	Minock Park	1
22092487-8	14322 Auburn	6/12/2015	15-004419	Westwood Park	1
22092615.	15355 Auburn	12/11/2015	15-004419	Minock Park	1
22090806.	14330 Minock	6/12/2015	15-004454	Westwood Park	1
22091267.	14413 Minock	6/12/2015	15-004454	Westwood Park	1
22089950.	14359 Westwood	6/12/2015	15-004454	Westwood Park	1
22095521-2	14042 Evergreen	6/12/2015	15-004454	Westwood Park	1
22092704.	13961 Auburn	6/12/2015	15-004454	Westwood Park	1
21074533.	9301 Harvard Rd	7/31/2015	15-004753	Yorkshire Woods	4
21074882.	10427 Merlin	8/7/2015	15-004753	Yorkshire Woods	4
21074876.	10471 Merlin	10/30/2015	15-004753	Yorkshire Woods	4
16033022.	19954 Cherrylawn	8/7/2015	15-004725	Pembroke	2

16040452.	20174 Ilene	7/31/2015	15-004725	Pembroke	2
21074087.	10100 Grayton	7/31/2015	15-004680	Yorkshire Woods	4
21074126.	10011 Grayton	7/24/2015	15-004680	Yorkshire Woods	4
21073674.	9975 Bishop	7/24/2015	15-004680	Yorkshire Woods	4
21073658.	9966 Bishop	7/24/2015	15-004680	Yorkshire Woods	4
21067861.	10664 Balfour	7/31/2015	15-004644	Yorkshire Woods	4
21067851.	10518 Balfour	7/31/2015	15-004644	Yorkshire Woods	4
16043147.	20236 Mendota	7/17/2015	15-005127	Pembroke	2
16032054.	20474 Northlawn	7/2/2015	15-005127	Pembroke	2
13003582.	1846 E Grand Blvd	7/17/2015	15-005140	Poletown East	5
13003587.	1828 E Grand Blvd	7/17/2015	15-005140	Poletown East	5
21025848.	15825 Eastburn	1/15/2016	15-005218	Regent Park	3
21025847.001	15809 Eastburn	1/15/2016	15-005218	Regent Park	3
21025108.	16484 Fairmount Dr	1/15/2016	15-005218	Regent Park	3
21025108.	16484 Fairmount Dr	12/11/2015	15-005218	Regent Park	3
21025847.001	15809 Eastburn	12/11/2015	15-005218	Regent Park	3
21025848.	15825 Eastburn	12/11/2015	15-005218	Regent Park	3
22125158.	7503 W Outer Drive	9/3/2015	15-005502	College Park	2
18014521.	8329 Cloverlawn	3/4/2016	15-005451	Barton-McFarland	7
18014291.	8287 Roselawn	3/11/2016	15-005451	Barton-McFarland	7
18014291.	8287 Roselawn	7/24/2015	15-005451	Barton-McFarland	7
16027762.	20035 Santa Barbara	7/31/2015	15-005830	Pembroke	2
16029617.	19768 Greenlawn	7/24/2015	15-005830	Pembroke	2
16022996.	20144 Prairie	7/24/2015	15-005830	Pembroke	2
16030521.	20006 Roselawn	7/24/2015	15-005830	Pembroke	2
16022990.	20100 Prairie	7/24/2015	15-005830	Pembroke	2
16025801.	19819 San Juan	7/24/2015	15-005830	Pembroke	2
16025736.	20154 San Juan	7/24/2015	15-005830	Pembroke	2
16025769.	20425 San Juan	7/24/2015	15-005830	Pembroke	2
16029682.	20475 Greenlawn	7/24/2015	15-005830	Pembroke	2
16029670.	20490 Greenlawn	7/24/2015	15-005830	Pembroke	2
16026393.	19750 Pennington	7/24/2015	15-005830	Pembroke	2
16036553.	16190 Kentucky	4/15/2016	15-005818	Fitzgerald/Marygrove	2
16019211.	20030 Stoepel	7/31/2015	15-005818	Pembroke	2
16020314.	20016 Santa Rosa	10/30/2015	15-005818	Pembroke	2
18012314.	5203 Chopin	12/18/2015	15-005669	Claytown	6
09022002.	19965 Cameron	8/14/2015	15-005836	Nolan	3
09007369.	951 E Brentwood	7/17/2015	15-005836	Hawthorne Park	3
09021979.	20159 Cameron	7/31/2015	15-006012	Nolan	3
22053076.	14150 Montrose	7/31/2015	15-006087	Greenfield-Grand River	1

22055596.	14103 Prevost	7/24/2015	15-006087	Greenfield-Grand River	1
22053187.	14383 Montrose	7/24/2015	15-006087	Greenfield-Grand River	1
22055570.	14351 Prevost	7/24/2015	15-006087	Greenfield-Grand River	1
22055586.	14185 Prevost	7/24/2015	15-006087	Greenfield-Grand River	1
22053892.	14230 Forrer	7/24/2015	15-006087	Greenfield-Grand River	1
22054533.	14201 Forrer	7/24/2015	15-006087	Greenfield-Grand River	1
22054539.	14155 Forrer	7/24/2015	15-006087	Greenfield-Grand River	1
22054545.	14103 Forrer	7/24/2015	15-006087	Greenfield-Grand River	1
22053227.	13977 Montrose	8/14/2015	15-006193	Greenfield-Grand River	1
22062008.	14433 Asbury Park	8/14/2015	15-006193	Grandmont	1
22053073.	14126 Montrose	8/14/2015	15-006193	Greenfield-Grand River	1
22053219.	14043 Montrose	8/14/2015	15-006193	Greenfield-Grand River	1
22055562.	14415 Prevost	8/14/2015	15-006193	Greenfield-Grand River	1
22053860.	13930 Forrer	8/14/2015	15-006193	Greenfield-Grand River	1
22054558.	13965 Forrer	8/14/2015	15-006193	Greenfield-Grand River	1
21025442.001	15839 Fairmount Dr	8/21/2015	15-006192	Regent Park	3
22059164.	14225 St Marys	8/7/2015	15-006192	Greenfield-Grand River	1
22059156.	14329 St Marys	8/7/2015	15-006192	Greenfield-Grand River	1
22058563.	14320 St Marys	8/7/2015	15-006192	Greenfield-Grand River	1
22056557.	14211 Rutherford	8/7/2015	15-006192	Greenfield-Grand River	1
22052409.	14167 Winthrop	7/31/2015	15-006192	Greenfield-Grand River	1
22078344.	6390 Faust	2/26/2016	15-006218	Warrendale	7
22074680.	6754 Ashton	7/17/2015	15-006218	Warrendale	7
22075991.	6403 Ashton	7/17/2015	15-006218	Warrendale	7
22076089.	6506 Rosemont	7/17/2015	15-006218	Warrendale	7
22078246.	6525 Penrod	6/24/2016	15-006436	Warrendale	7
22076056.	6234 Rosemont	7/24/2015	15-006436	Warrendale	7
10001016-0	2394 W Grand Blvd	7/15/2016	15-006496	NW Goldberg	5
22107882.	16501 Burt Rd	8/7/2015	15-006496	Riverdale	1
22059157.	14319 St Marys	8/7/2015	15-006496	Greenfield-Grand River	1

22053895.	14254 Forrer	8/7/2015	15-006496	Greenfield-Grand River	1
22041753.	12660 Lauder	8/7/2015	15-006871	Schoolcraft Southfield	1
22121804.	13590 Riverview	8/7/2015	15-006871	Castle Rouge	1
21024779-80	15410 Rossini Drive	8/7/2015	15-006855	Regent Park	3
21024791.	15244 Rossini Drive	7/31/2015	15-006855	Regent Park	3
21025579.001	15708 Eastburn	7/24/2015	15-006855	Regent Park	3
21025836.001	15617 Eastburn	7/24/2015	15-006855	Regent Park	3
21026007.	15600 Bringard Dr	7/24/2015	15-006855	Regent Park	3
21025587.	15516 Eastburn	7/24/2015	15-006855	Regent Park	3
21025190.	15410 Fairmount Dr	7/24/2015	15-006855	Regent Park	3
21025191.	15402 Fairmount Dr	7/24/2015	15-006855	Regent Park	3
21025610.	15266 Eastburn	7/24/2015	15-006855	Regent Park	3
21024542.	15611 E State Fair	8/28/2015	15-006876	Regent Park	3
21024496.	14981 E State Fair	7/31/2015	15-006876	Regent Park	3
21024497.	14989 E State Fair	7/31/2015	15-006876	Regent Park	3
21024510.	15225 E State Fair	7/31/2015	15-006876	Regent Park	3
21024516.	15265 E State Fair	7/31/2015	15-006876	Regent Park	3
21024523.	15313 E State Fair	7/31/2015	15-006876	Regent Park	3
21025005.	15477 Rossini Drive	7/31/2015	15-006876	Regent Park	3
21024764.	15600 Rossini Drive	7/31/2015	15-006876	Regent Park	3
21025014.	15645 Rossini Drive	7/31/2015	15-006876	Regent Park	3
14005341.	3726 Tyler	7/31/2015	15-006876	Russell Woods	7
22071099.	12250 Archdale	7/31/2015	15-006876	Plymouth-I96	7
22062124.002L	12285 Asbury Park	7/31/2015	15-006876	Plymouth-I96	7
16022299.	9566 Burnette	9/11/2015	15-006885	Midwest	6
22037433.002L	12633 Mark Twain	8/21/2015	15-006885	Plymouth-Hubbell	7
22114516.	13935 Rockdale	8/7/2015	15-006885	Brightmoor	1
14002150.	4421 Oregon	8/7/2015	15-006885	Midwest	6
21072129.	4415 Audubon	8/14/2015	15-007093	Morningside	4
16033514.	13109 Cherrylawn	7/31/2015	15-007093	Littlefield Community	7
16036365.	13150 Kentucky	7/31/2015	15-007093	Littlefield Community	7
16036382.	13516 Kentucky	7/31/2015	15-007093	Davison-Schoolcraft	7
16032461-70	13503 Northlawn	7/31/2015	15-007093	Davison-Schoolcraft	7
16039926.	13159 Washburn	7/31/2015	15-007093	Grand River-I96	7
05002808.	935 E Philadelphia	7/31/2015	15-007088	North End	5
03002539.	592 Leicester Ct	7/31/2015	15-007088	North End	5
03002270.	560 Hague	7/31/2015	15-007088	North End	5
03001936.	550 Smith	7/31/2015	15-007088	North End	5
01002357.	414 Mt Vernon	7/31/2015	15-007088	North End	5
01002753.	446 King	7/31/2015	15-007088	North End	5

01002692.	431 Hague	7/31/2015	15-007088	North End	5
01002961.	311 Owen	7/31/2015	15-007106	North End	5
05004847.	9180 Goodwin	7/31/2015	15-007106	North End Neighborhood	5
03002301.	656 Alger	7/31/2015	15-007106	North End	5
03002334.	583 Alger	7/31/2015	15-007106	North End	5
22061417.	16586 Asbury Park	8/21/2015	15-007399	Crary/St Marys	1
22065837.	16719 Gilchrist	8/21/2015	15-007399	Crary/St Marys	1
22065857.	16207 Gilchrist	8/21/2015	15-007399	Crary/St Marys	1
22064476.	16103 Biltmore	8/21/2015	15-007399	Crary/St Marys	1
06002948.	1547 Lawrence	9/11/2015	15-007576	Dexter-Linwood	5
03002148.	561 Melbourne	9/11/2015	15-007576	North End	5
01002968.	350 Leicester Ct	9/11/2015	15-007576	North End	5
05003004.	9019 Delmar	9/4/2015	15-007576	North End	5
01002344.	415 Marston	9/4/2015	15-007576	North End	5
22055015.	16130 Prevost	9/11/2015	15-007993	Crary/St Marys	1
22055012.002L	15910 Prevost	9/11/2015	15-007993	Crary/St Marys	1
22057276.	15820 Mansfield	9/11/2015	15-007993	Crary/St Marys	1
22065408.	16746 Gilchrist	9/11/2015	15-007993	Crary/St Marys	1
22057324.	16758 Mansfield	9/11/2015	15-007993	Crary/St Marys	1
22060048.	16710 Murray Hill	9/11/2015	15-007993	Crary/St Marys	1
22060416.	16573 Murray Hill	9/11/2015	15-007993	Crary/St Marys	1
06003920.	1641 Clements	3/4/2016	15-008160	Oakman Blvd Community	2
12011907.	15381 Muirland	9/25/2015	15-008160	Pilgrim Village	2
06004260.	1708 Kendall	8/28/2015	15-008160	Oakman Blvd Community	2
16035573-82	15464 Indiana	8/28/2015	15-008160	Fitzgerald/Marygrove	2
12012022.	15476 Fairfield	8/28/2015	15-008160	Pilgrim Village	2
06003920.	1641 Clements	8/28/2015	15-008160	Oakman Blvd Community	2
16033361.	15467 Cherrylawn	8/28/2015	15-008160	Fitzgerald/Marygrove	2
22059025.	16247 St Marys	8/28/2015	15-008194	Crary/St Marys	1
22056046.	16600 Rutherford	8/28/2015	15-008194	Crary/St Marys	1
22055439.	16751 Prevost	8/28/2015	15-008194	Crary/St Marys	1
22058991.	16777 St Marys	8/28/2015	15-008194	Crary/St Marys	1
18014142.	8620 Roselawn	8/28/2015	15-008479	Barton-McFarland	6
18013986.	8292 Greenlawn	8/28/2015	15-008479	Barton-McFarland	6
18013999.	8516 Greenlawn	8/28/2015	15-008479	Barton-McFarland	6
18014086-7	8058 Roselawn	8/28/2015	15-008479	Barton-McFarland	6
21053530-1	345 Eastlawn	9/11/2015	15-008815	Jefferson Chalmers	4
21074860.	10434 Merlin	9/4/2015	15-008815	Yorkshire Woods	4

12009654.	1431 25th St	9/11/2015	15-009089	Mexicantown	6
22082985.	11730 Stahelin	9/4/2015	15-009089	Southfield Plymouth	7
22093828.	12114 Plainview	9/4/2015	15-009089	Weatherby	7
22076345.	12088 Rosemont	9/4/2015	15-009089	Southfield Plymouth	7
22092403.	12066 Auburn	9/4/2015	15-009089	Weatherby	7
22077110.001	12929 Rosemont	10/9/2015	15-010531	Schoolcraft Southfield	1
22089467.	14004 Westwood	10/9/2015	15-010531	Westwood Park	1
16033258.	17547 Cherrylawn	12/4/2015	15-010531	Bagley	2
16021649.	18453 Monica	10/30/2015	15-010531	Bagley	2
13005601.	5504 Harold	11/13/2015	15-011322	Buffalo Charles	3
22088075.	6886 Grandville	12/11/2015	15-011368	Warrendale	7
22088048.	6546 Grandville	12/11/2015	15-011368	Warrendale	7
22089063.	6417 Grandville	12/11/2015	15-011368	Warrendale	7
22092986.	6851 Auburn	11/13/2015	15-011368	Warrendale	7
22093578-9	6824 Plainview	11/13/2015	15-011368	Warrendale	7
22091591.	6909 Minock	11/13/2015	15-011368	Warrendale	7
22094817.	6879 Plainview	11/13/2015	15-011368	Warrendale	7
22090461.	6726 Minock	11/13/2015	15-011368	Warrendale	7
22090287.	6859 Westwood	11/13/2015	15-011368	Warrendale	7
22094829.	6795 Plainview	11/13/2015	15-011368	Warrendale	7
22089040.	6727 Grandville	11/13/2015	15-011368	Warrendale	7
22089193.	6796 Westwood	11/13/2015	15-011368	Warrendale	7
22092109.	6352 Auburn	11/13/2015	15-011368	Warrendale	7
22090309.	6705 Westwood	11/13/2015	15-011368	Warrendale	7
16010236.	1052 Morrell	10/23/2015	15-011391	Central Southwest	6
16009992.	1566 Ferdinand	10/23/2015	15-011391	Central Southwest	6
20003986-7	8043 Senator	10/23/2015	15-011391	Springwells	6
16021616.	18951 Monica	12/4/2015	15-011391	Bagley	2
16035720.	18280 Indiana	12/4/2015	15-011391	Bagley	2
16023138.	18957 Prairie	11/13/2015	15-011391	Bagley	2
22090469.	6788 Minock	11/13/2015	15-011391	Warrendale	7
22090298.	6783 Westwood	7/1/2016	15-011659	Warrendale	7
17010351.	1438 Shipherd	1/8/2016	15-011659	West Village	5
22093575.	6804 Plainview	12/11/2015	15-011659	Warrendale	7
15008105.	251 E Grand Blvd	11/20/2015	15-011659	Islandview	5
22079134.	14201 Faust	4/1/2016	15-011650	Grandmont #1	1
22079134.	14201 Faust	11/13/2015	15-011650	Grandmont #1	1
16021713-4	17133 Monica	12/4/2015	15-011651	Bagley	2
16022825.	17140 Prairie	12/4/2015	15-011959	Bagley	2
16019051.	17180 Stoepel	12/4/2015	15-011959	Bagley	2

16019435.	17557 Stoepel	11/13/2015	15-011959	Bagley	2
16029501.	18000 Greenlawn	11/13/2015	15-011959	Bagley	2
16043974.	18980 Pinehurst	11/13/2015	15-011959	Schulze	2
22082157.	18688 Glastonbury	3/11/2016	15-012152	Evergreen-Outer Drive	1
22080214.	18687 Greenview	3/11/2016	15-012152	Evergreen-Outer Drive	1
22082157.	18688 Glastonbury	1/22/2016	15-012152	Evergreen-Outer Drive	1
22080214.	18687 Greenview	1/22/2016	15-012152	Evergreen-Outer Drive	1
22087407.	18699 Shaftsbury	12/18/2015	15-012152	Evergreen-Outer Drive	1
22080221.	18637 Greenview	12/18/2015	15-012152	Evergreen-Outer Drive	1
22096235.	17153 Evergreen	12/4/2015	15-012152	Bentler-Pickford	1
22097853.	17230 Vaughan	12/4/2015	15-012152	Bentler-Pickford	1
22080066.	18748 Greenview	12/4/2015	15-012152	Evergreen-Outer Drive	1
16041531.	17373 Griggs	12/18/2015	15-012167	Schulze	2
22076067.	6332 Rosemont	12/11/2015	15-012167	Warrendale	7
22080714.	6867 Greenview	12/11/2015	15-012167	Warrendale	7
22074667.	6500 Ashton	12/11/2015	15-012167	Warrendale	7
22075455.	18505 Ashton	3/4/2016	15-012753	Evergreen-Outer Drive	2
18010154.	2552 Honarah	12/11/2015	15-013078	Springwells	6
18010129.	2334 Honarah	12/11/2015	15-013078	Springwells	6
16033255.	17569 Cherrylawn	4/15/2016	15-013074	Bagley	2
16020215.	18266 Santa Rosa	12/18/2015	15-013074	Bagley	2
21029594-5	20546 Schoenherr	12/18/2015	15-013074	Mohican Regent	3
21067898.	11144 Balfour	5/6/2016	15-013138	Moross-Morang	4
21080155.	19960 McCormick	12/4/2015	15-013138	Moross-Morang	4
21068592.040L	10303 Lanark	12/4/2015	15-013138	Moross-Morang	4
21068478.008	10826 Marne	2/26/2016	15-013138	Moross-Morang	4
22063391.	18920 Ferguson	4/29/2016	15-014272	College Park	2
18009417.	1230 Solvay	1/15/2016	15-014300	Central Southwest	6
18008128.	1216 Waterman	1/15/2016	15-014300	Central Southwest	6
18007764.	1231 Rademacher	1/15/2016	15-014300	Central Southwest	6
18008031.	1045 Casgrain	1/15/2016	15-014300	Central Southwest	6
18001707.	6876 Clayton	1/15/2016	15-014300	Claytown	6
18000953.	7251 Cahalan	1/15/2016	15-014300	Springwells	6
22027524.	9419 Littlefield	3/4/2016	15-014591	Barton-McFarland	7
22020773-4	8588 Appoline	3/4/2016	15-014591	Aviation Sub	7
18015293.	8252 Wisconsin	3/4/2016	15-014591	Barton-McFarland	7
20003966.	7743 Senator	1/15/2016	15-014591	Springwells	6
20004068.	7784 Senator	1/15/2016	15-014591	Springwells	6
22091735.	17566 Annchester	1/15/2016	15-014591	Evergreen-Outer Drive	1
22113658.	22011 Margareta	1/15/2016	15-014591	Old Redford	1

22014537.	22052 Willmarth	1/15/2016	15-014591	Old Redford	1
01002783.	89 King	3/4/2016	15-014682	North End	5
04002606.	891 Edison	3/18/2016	15-014682	Boston Edison	5
04002500.	672 Clairmount	3/4/2016	15-014682	Piety Hill	5
01002594.	238 E Philadelphia	3/4/2016	15-014682	North End	5
04002574.	676 Atkinson	3/4/2016	15-014682	Piety Hill	5
01003053.	276 Kenilworth	3/4/2016	15-014682	North End	5
01002593.	246 E Philadelphia	3/4/2016	15-014682	North End	5
04002606.	891 Edison	1/30/2015	15-014682	Boston Edison	5
21073605.	5900 Bishop	6/3/2016	15-014951	East English Village	4
21073605.	5900 Bishop	5/13/2016	15-014951	East English Village	4
15013409.	545 Beaufait	3/18/2016	15-014951	Islandview	5
22031155.	8685 Schaefer	3/4/2016	15-014974	Joy-Schaefer	7
20003122.	8104 Logan	3/4/2016	15-014974	Springwells	6
22026903.	17312 Littlefield	4/29/2016	15-015280	Schulze	2
09022081-2	19143 Cameron	3/11/2016	15-015280	Nolan	3
16034201.	17417 Ohio	3/4/2016	15-015280	Bagley	2
22028833.	18430 Hartwell	3/4/2016	15-015280	Schulze	2
16035642.	16516 Indiana	3/4/2016	15-015280	Fitzgerald/Marygrove	2
22073216-7	13612 Southfield	7/1/2016	15-015321	Schoolcraft Southfield	1
22073216-7	13612 Southfield	6/3/2016	15-015321	Schoolcraft Southfield	1
22077742.	12958 Penrod	3/25/2016	15-015321	Schoolcraft Southfield	1
22091335.	13577 Minock	3/25/2016	15-015321	Schoolcraft Southfield	1
22054588.	12923 Forrer	3/25/2016	15-015321	Schoolcraft Southfield	1
22068728.	12840 Rutland	3/25/2016	15-015321	Schoolcraft Southfield	1
22060643.	12641 Mettetal	3/25/2016	15-015321	Schoolcraft Southfield	1
22073216-7	13612 Southfield	3/29/2016	15-015321	Schoolcraft Southfield	1
22053855.	13620 Forrer	3/11/2016	15-015321	Schoolcraft Southfield	1
22053855.	13620 Forrer	1/22/2016	15-015321	Schoolcraft Southfield	1
03002194.	527 E Euclid	8/19/2016	15-015731	North End	5
03002194.	527 E Euclid	2/5/2016	15-015731	North End	5
21024964.	14953 Rossini Drive	3/11/2016	15-015798	Regent Park	3
22051739.	12960 Winthrop	3/4/2016	15-015798	Schoolcraft Southfield	1
18015760.	8623 Kentucky	3/11/2016	15-016015	Barton-McFarland	7
14005392.	4337 Waverly	3/11/2016	15-016015	Russell Woods	7
22059006.	16707 St Marys	3/25/2016	15-016206	Crary/St Marys	1
21026034.	15240 Bringard Dr	3/11/2016	15-016206	Regent Park	3
16039608.	18411 Washburn	4/15/2016	15-016302	Schulze	2
20008089.	1977 Oakdale	3/11/2016	15-016302	Springwells	6
20002962.	9228 Longworth	3/4/2016	15-016302	Springwells	6

20008005.	1936 Oakdale	3/4/2016	15-016302	Springwells	6
20002364.	8787 Chamberlain	3/4/2016	15-016302	Springwells	6
16042223.	19930 Birwood	5/20/2016	15-016515	Pembroke	2
16043056.	18438 Mendota	5/20/2016	15-016515	Schulze	2
22021242.	18466 Appoline	4/29/2016	15-016515	Schulze	2
16029478.	17360 Greenlawn	4/29/2016	15-016515	Bagley	2
22021573.	17195 Appoline	4/15/2016	15-016515	Schulze	2
16040306.	17126 Ilene	4/15/2016	15-016515	Schulze	2
03001725.	511 Harper	3/25/2016	15-016525	Medbury Park	5
22080535.	11635 Greenview	3/18/2016	15-016765	Southfield Plymouth	7
18014060.	8203 Greenlawn	8/12/2016	15-016764	Barton-McFarland	6
21074425.	4810 Harvard Rd	2/26/2016	15-016764	East English Village	4
22054934.	14624 Prevost	8/26/2016	16-000316	Grand River-St Marys	1
22054934.	14624 Prevost	8/5/2016	16-000316	Grand River-St Marys	1
22060486.	15237 Mettetal	6/10/2016	16-000364	Grand River-St Marys	1
21025843.001	15691 Eastburn	5/13/2016	16-000385	Regent Park	3
16019174.	19464 Stoepel	6/3/2016	16-000476	Pembroke	2
22026982.	18976 Littlefield	4/29/2016	16-000476	Schulze	2
16023090.	19947 Prairie	4/15/2016	16-000476	Pembroke	2
16029520.	18236 Greenlawn	8/26/2016	16-006394	Bagley	2
20002234.	9159 W Lafayette	8/12/2016	16-006394	Springwells	6
16030774.	16253 Roselawn	7/29/2016	16-006394	Fitzgerald/Marygrove	2
08003047.	1676 Chicago	7/29/2016	16-006394	Boston Edison	5
16033303.	16261 Cherrylawn	7/8/2016	16-006158	Fitzgerald/Marygrove	2
21073016.	4497 Kensington	7/22/2016	16-006158	East English Village	4
16033303.	16261 Cherrylawn	7/8/2016	16-006158	Fitzgerald/Marygrove	2
22109808.	16514 Westbrook	8/19/2016	16-007129	Riverdale	1
21074552.	9141 Harvard Rd	8/12/2016	16-007129	Yorkshire Woods	4
21074552.	9141 Harvard Rd	7/31/2015	16-007129	Yorkshire Woods	4
22109302.	16595 Blackstone	3/24/17	16-008681	Riverdale	1
16019457.	17309 Stoepel	1/13/17	15-013074	Bagley	2
15008070.	451 E Grand Blvd	1/13/17	15-014682	Islandview	5
09006910.	1523 E Nevada	2/3/17	16-014801-CF	Hawthorne Park	3
22058969.	17191 St Marys	1/13/17	15-012753	College Park	2
18000885.	7266 Logan	1/13/17	15-014300	Springwells	6
05003805.	7509 Chrysler	1/13/17	15-016525	North End	5
22116617.	7485 Lamphere	1/13/2017	16-006158	Far West Detroit	7



Building Detroit

Public Affairs Department

The mission of the Department of Public Affairs is to educate citizens about the Detroit Land Bank Authority and its programs. The department is responsible for marketing, which includes advertising, market research, media planning and strategy. The Department of Public Affairs also is responsible for media relations, public relations, and customer service. Public Affairs also plans and executes community outreach and engagement activities, including public meetings, open houses, off-site sales events, and social media communications.

MEDIA / ADVERTISING

The DLBA continues to receive consistent media attention for its efforts to combat blight in Detroit. The Land Bank has received coverage of many of its programs, including side lot sales, home auctions, demolition, Rehabbed and Ready, and its occupied home sales efforts. In addition, the DLBA is proud that the rehabilitation of two of its properties were selected as subjects for the long running PBS series “This Old House.” The show, which is currently airing nationwide, is highlighting efforts to revitalize Detroit neighborhoods, and is having a positive impact on people’s understanding of how far reaching the DLBA efforts in the neighborhoods really are.

ADVERTISING CAMPAIGN

The DLBA Public Affairs team is in the midst of its spring advertising campaign. Radio, Television, print, and digital spots continue to focus on our open house/auction program, the “own it now” program, and the “Rehabbed and Ready” program. The theme of the ads continues to be on the affordability of DLBA homes, and the quality of Detroit neighborhoods. We are also closely coordinating our efforts with the Detroit Home Mortgage program, which gives financing options to those seeking to buy and live in homes in the City.

WEBSITE / SOCIAL MEDIA

The DLBA website, www.buildingdetroit.org, continues to attract visitors, and registered bidders. 2065 new bidders were added in the quarter, and as of March 31st 2017, a total of 19,309 people had registered to bid on properties on the site. In the last quarter, the DLBA averaged over 170 new registrations each week, up from just 50 in the same period last year. Traffic to our website also continues to grow. There were over 311,000 visits to www.buildingdetroit.org in the quarter, an increase of 38% from the same period in 2016. Also, 113,000 unique individuals visited the page, with over 2,650,000 pageviews! The increased traffic is leading to stronger auction prices, and an increased number of direct sales and side lot sales. In addition, we monitor the level of participation from city employees in the DLBA’s 50% auction property discount program. So far, 1748 employees

have registered to take advantage of this benefit, with nearly 1400 being deemed eligible. So far, 200 City employees and family members have had the winning bid on DLBA auction programs. We will continue to find new ways to encourage employees to participate.

We are always adding new features to the website, which will now features instructional videos discussing compliance with our programs and renovation requirements. As Council requested, the DLBA continues to update vital information on the website. Information available includes all data on all property transactions that have been completed, including side lots, auctions, and direct sales; all contractual relationships between vendors and the DLBA; minutes from board meetings; quarterly reports sent to City Council; plus a robust and lengthy list of frequently asked questions about the DLBA and its activities, including auctions, direct sales, occupied program, and demolition. A community events calendar is in place, and we encourage Council members to let us know about upcoming meetings and community events, so that we may assist in boosting resident participation. Simply contact Craig Fahle (cfahle@detroitlandbank.org) or Rod Liggons (rliggons@detroitlandbank.org) in the Public Affairs department if you would like your event added to our calendar. A reminder, all demolition data is uploaded in real time at the city of Detroit's data portal. Click on www.detroitmi.gov/demolition to see completed and upcoming demolitions in your districts or citywide. We are currently working on outreach activities to prepare residents for a large number of demolitions that are in the pipeline for the upcoming quarter.

Our DLBA Facebook page and twitter feed continue to grow. We now have nearly 7500 followers on Facebook, and 1800 followers on our Twitter account. These accounts allow us to reach out to citizens on various DLBA programs, but also to help spread the word about other city initiatives outside of the DLBA, such as Motor City Makeover, upcoming foreclosure prevention workshops, pertinent news on city initiatives and programs, community meetings, and upcoming cultural events in the city. We are currently working with new technology such as geo-fencing to alert residents when properties near them are up for sale, and targeting city employees to get them to participate in the DLBA's city employee discount program.

COMMUNITY ENGAGEMENT ACTIVITIES

New, Bi-monthly meetings between the DLBA and representatives from Detroit City Council offices are now taking place, creating an opportunity for dialogue and cooperative problem solving. Liaisons from Council Members' offices have direct access to the DLBA Public Affairs department to help sort out residents' questions. Building this relationship between DLBA staff and Council staff will be an important focus for 2017. As always, the DLBA Community Relations team continues to meet regularly with residents, clergy, business and community leaders across the entire city. Our enhanced engagement plan is giving residents and block clubs much more locally focused, neighborhood centric data, giving them a much more detailed view of the work happening directly in their area. The DLBA of course continues its regular participation in meetings hosted by the Mayor, City Council

members, and community organizations. We are thankful for the chance to speak to residents at Council member sponsored meetings, and we sincerely appreciate any opportunity that you can provide to help us spread the word about the work of the DLBA, and answer any questions residents may have.

Here is a breakdown of events from the past quarter:

- 11-Jan Mayor's business meeting
- 18-Jan Mayor's House meeting
- 23-Jan Detroit Area Realtors' meeting
- 24-Jan Detroit City Council community meeting
- 25-Jan District 7 Meet & Greet
- 26-Jan District 5 Organize for Action
- 30-Jan Mayor's House meeting

- 9-Feb Yemeni Community meeting
- 11-Feb Councilman Spivey community meeting
- 23-Feb North Rosedale Park community meeting
- 28-Feb Talking Dreams into Action D6

- 3-Mar Yemeni Community meeting
- 10-Mar Councilmember Ayers' coffee hours
- 13-Mar Councilmember Tate D1 business event
- 14-Mar Eastside Community Network blight task force meeting
- 14-Mar Mack Alive community meeting
- 17-Mar Council President B. Jones' coffee hours
- 21-Mar Detroit City Council community meeting
- 27-Mar Greet the students/parents Dossin Elem/Middle School

1st QUARTER REPORT 2017

DLBA OPEN HOUSE ATTENDANCE

The DLBA held open houses in multiple neighborhoods. The DLBA continues to work on ways to make open house attendance more robust and make the event informative for those interested in buying property in the city. The DLBA is working closely with neighborhood groups and block clubs to both spread the word and improve the marketing of the city's neighborhoods. Here is a list of location and attendance figures.

JANUARY 2017

Date	Districts	# of Homes	Attendees
1/14/2017	1,7	20	156
1/15/2017	7	25	205
SUB-TOTAL ATTENDEES:		45	361

FEBRUARY 2017

Date	Districts	# of Homes	Attendees
2/4/2017	4,5	31	203
2/5/2017	4	29	152
SUB-TOTAL ATTENDEES:		60	355

MARCH 2017

Date	Districts	# of Homes	Attendees
3/4/2017	3,5,6	23	182
3/5/2017	1,2,7	32	356
3/18/2017		12	105
3/19/2017		20	36
SUB-TOTAL ATTENDEES:		87	679

TOTAL (1ST QTR):		192	1395
------------------	--	-----	------

CLIENT SERVICES

As we continue to improve the quality of our customers' experiences with the Detroit Land Bank Authority, our Public Affairs/Clients Services team has been taking great strides to reduce the wait time for customers contacting us via phone and the office. We continue to invest in technology that improves our ability to monitor quality assurance, and improve the accuracy of the information being provided to the public. A new phone system allows for the client services staff to make sure experts in various departments are available to speak to residents with more difficult questions.

We are proud of our accomplishments in this arena. Currently, seven full time staff are devoted to customer service. However, the entire Public Affairs team, including the Director, work with clients every day in an effort to reach the goal of providing the highest quality, most efficient, and friendliest customer service in the city of Detroit. This continues to be our mission.



Building Detroit

Finance Department

The Finance Department is continuous on its journey to further enhance financial accuracy and transparency, at a timely pace. The Department continues to focus on enforcement of process improvements with proper key controls. The summary below will discuss (1) YTD March 31, 2017 Budget to Actuals, (2) Hardest Hit Fund Update and (3) Other Items.

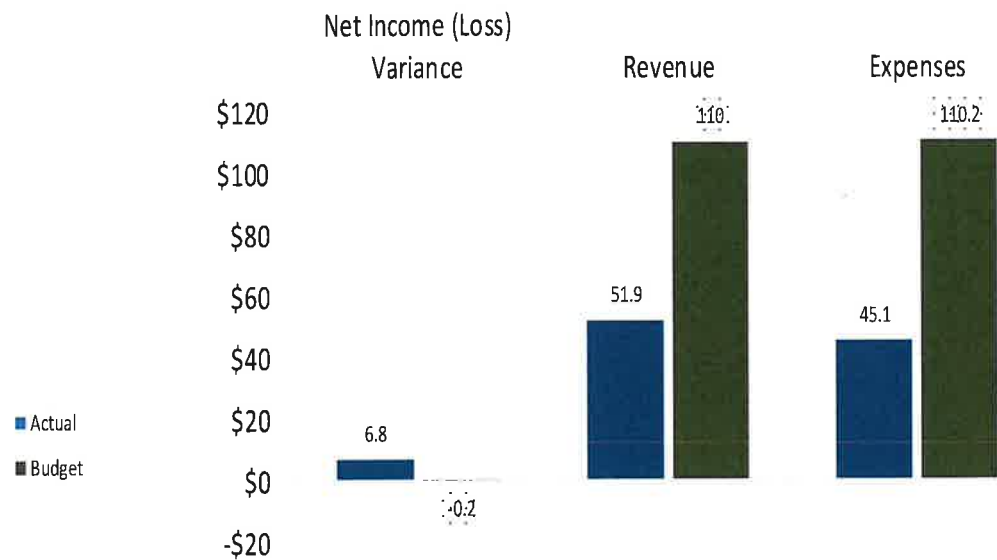
FY 2017 December YTD Actuals vs. Budget

The FY 2017 budget included an assumption that demolitions related to rounds 4 and 5 of the Hardest Hit Fund would be significantly underway. The current trend is that round 4 will be started during this fiscal year, but will be completed during FY 2018. Below is a chart that denotes the variance between actuals vs. budget revenue and expenses as of March 31, 2017.

Detroit Land Bank Authority

Financial Overview -in Millions

Fiscal Year to Date as of March 31, 2017 - Actual vs. Budget



Note: Expenses and Revenue are recognized as incurred or earned (accrual basis)

Hardest Hit Fund Updates

Although reimbursements are flowing from the Hardest Hit Fund, there is still a lag in the timing of vendor payments to cash reimbursements. Below is a summary of expenses paid versus cash reimbursements up through March 31, 2017.

Inception to Date in Millions:	\$ Amount
HHF Expenses Paid	(130.4)
HHF Reimbursements	117.8
Net Payments exceeded Reimbursement	(12.6)

From July 2016 to March 2017 over \$30M was paid in demolition expenses relating to this program. By way of the gracious support by both City Council and the City of Detroit, the Demolition Advance Fund significantly funded vendor payment this fiscal year. The chart below is a summary of the Demolition Advance Fund's balance.

Demo Advance Fund Balance Summary		
Date	Action	\$ Amount
March-15	Setup of Fund	20.0
April-15	Draw # 1	(15.0)
April-16	Repayment	10.0
June 30, 2016 Balance		(5.0)
August-16	Draw # 2	(4.0)
October-16	Draw # 3	(6.0)
March 31, 2017 Balance		(15.0)

Other Items

- ✚ The balance sheet ended strong with a working capital ratio of 2.1 which indicated that the DLBA current assets exceeds current liabilities one and a half times.
- ✚ DLBA and MSHDA are working closely together to expedite the reimbursements.
- ✚ Continuous improvements are in process to achieve a stronger internal control environment around our Financial Reporting.

Appendix

1. FY 2017 YTD P&L (unaudited)
2. FY 2017 YTD Balance Sheet (unaudited)

Detroit Land Bank Authority

Income Statement Summary

For the Period Ending March 31, 2017

(Unaudited)



**Building
Detroit**

Powered by the Detroit Land Bank Authority

	YTD Actual	YTD Budget	Variance
50/50 Proceeds	245,912	300,000	(54,088)
Closing Refunds	49,323	-	49,323
Demo Pull Sales	100	-	100
Fire Escrow Proceeds	35,328	-	35,328
Government Revenues	44,333,670	101,141,138	(56,807,467)
House Showing Fees	13,620	8,250	5,370
Lease Revenue	4,085	15,000	(10,915)
Legal Recoveries	52,420	18,750	33,670
Other Income	18,241	27,000	(8,759)
Private Grant Revenues	1,142,968	1,687,500	(544,532)
Quiet Title Fees	227,018	45,000	182,018
Side Lot Sales	370,674	75,000	295,674
Structure Sales	4,185,349	6,726,188	(2,540,839)
Donated Goods and Services	2,958,100	-	2,958,100
Gain (Loss) on Sale of Property	(3,030,617)	-	(3,030,617)
Donations	15,000	-	15,000
Inter-Company Revenue	1,240,000	-	1,240,000
Total Income	51,861,191	110,043,825	(58,182,634)

Row Labels	YTD Actual	YTD Budget	Variance
General Admin Costs	650,453	754,125	103,672
Personnel Costs	6,099,703	6,747,133	647,429
Professional Services	1,699,042	4,183,014	2,483,971
Program Expense	36,020,720	97,862,306	61,841,586
Facilities Costs	567,357	618,002	50,645
Total Expense	45,037,276	110,164,580	65,127,304

Net Income	\$6,823,915	\$(120,755)	\$6,944,670
-------------------	--------------------	--------------------	--------------------

Detroit Land Bank Authority

Balance Sheet Detailed

As of March 31, 2017

(Unaudited)



Row Labels	June 30, 2016	Current Period	June vs Current
Current Assets			
Cash And Cash Equivalents	14,235,914	10,988,866	(3,247,048)
Accrued/Accounts Receivable	8,306,273	20,509,475	12,203,202
Other Current Assets	22,994,465	24,260,637	1,266,171
Current Assets Total	45,536,652	55,758,977	10,222,325
Fixed Assets	359,467	270,881	(88,586)
Total Assets	45,896,119	56,029,858	10,133,739
	June 30, 2016	Current Period	June vs Current
Current Liabilities			
Demo Advance Fund	5,000,000	15,000,000	10,000,000
Accrued/Accounts Payable	24,471,354	11,438,255	(13,033,100)
Long Term Liabilities			
2902 - Loan from City of Detroit	-	6,500,000	6,500,000
2905 - Rehabbed & Ready Loan	2,000,000	2,000,000	-
Long Term Liabilities Total	2,000,000	8,500,000	6,500,000
Total Liabilities	31,471,354	34,938,255	3,466,900
Equity	14,424,765	21,091,603	6,666,838
Total Liabilities & Equity	45,896,119	56,029,858	10,133,739

Note: CDC balance of \$1.4M is excluded from June 30, 2016

Note: Total Balance Sheet of \$45,896,119 minus Fixed Assets of \$359,467 (page 11) equals Total Balance Sheet of \$45,536,652 (page 13) of the 2016 Audited Financial Statements