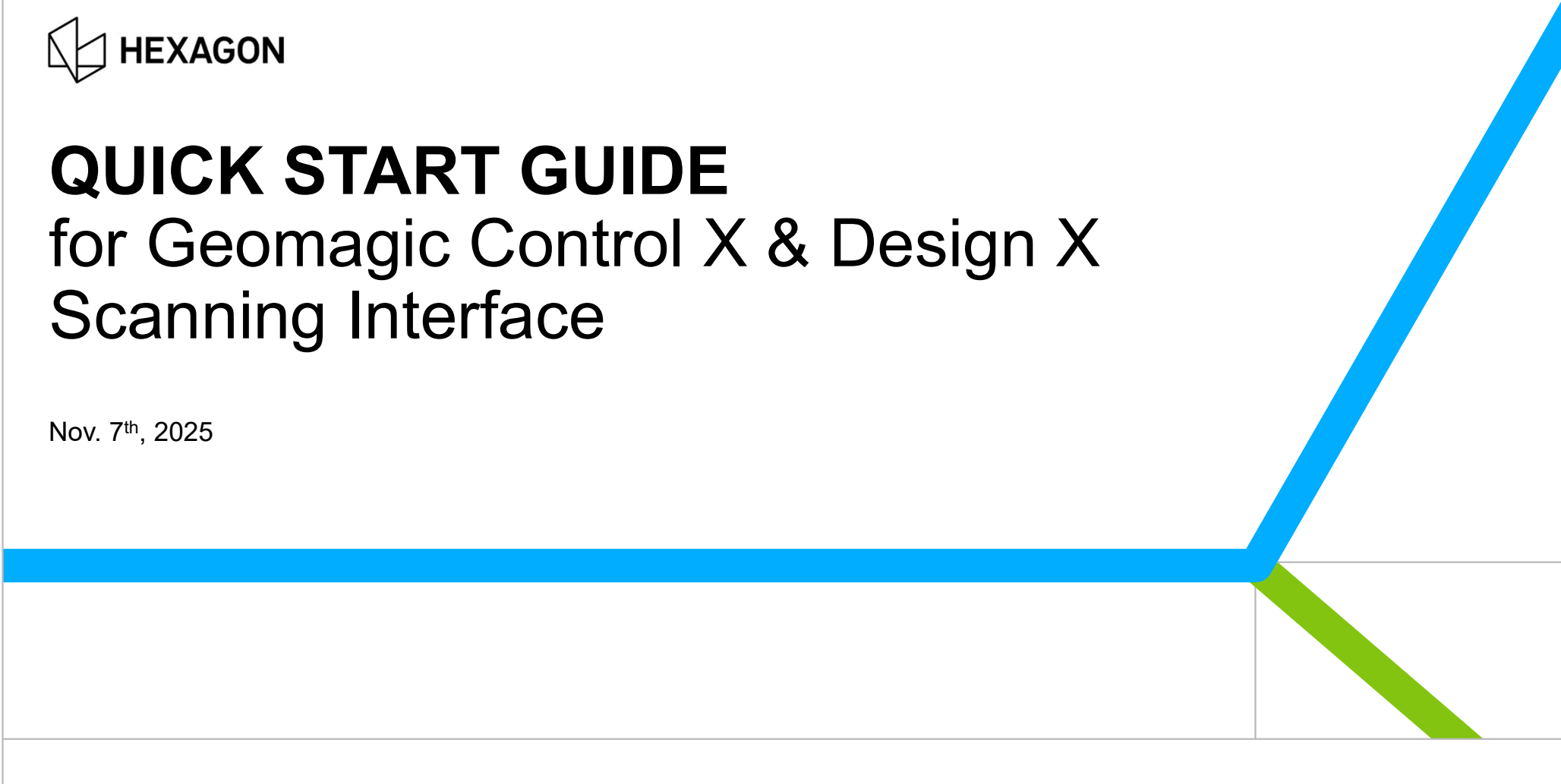




# **QUICK START GUIDE**

## for Geomagic Control X & Design X Scanning Interface

Nov. 7<sup>th</sup>, 2025



# Scanner Direct Control

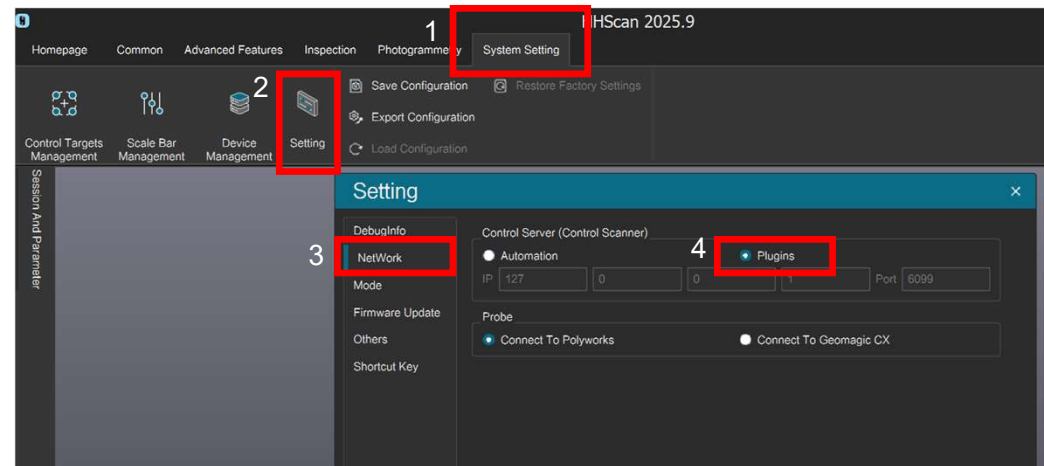
## Scanner Interface – Geomagic

### Pre-requisite information

- *Compatible hardware*
  - CERESCAN series\*, RIGELSCAN series\*, ATLASCAN series, MARVELSCAN & HYPERSCAN series
- *Proprietary software requirement*
  - You would need to install HH Scan 2025.9 / Innov 3D 2025.9\* version an above to operate the scanner interface.
- *Geomagic software version requirement*
  - Control X 2025.1
  - Design X 2025.1
- **License update required for HH Scan, IMPORTANT !!**
  - For existing users of HH Scan that would like to use the scanning interface with Geomagic Control X & Design X, you would need to update the HH Scan license. Please contact your local support team by providing .c2v file of your dongle license to update the license.

# Scanner Direct Control Scanner Interface – Geomagic

- Please ensure that you have installed HH Scan 2025.9 version onwards. The installer is available at the [Portable MI download portal](#).
- Ensure you have control server set to “plugins” in HH Scan (please see the workflow on the right).
- For existing users of HH Scan that would like to use the scanning interface with Geomagic Control X & Design X, you would need to update the HH Scan license. Please contact your local support team by providing .c2v file of your dongle license to update the license.

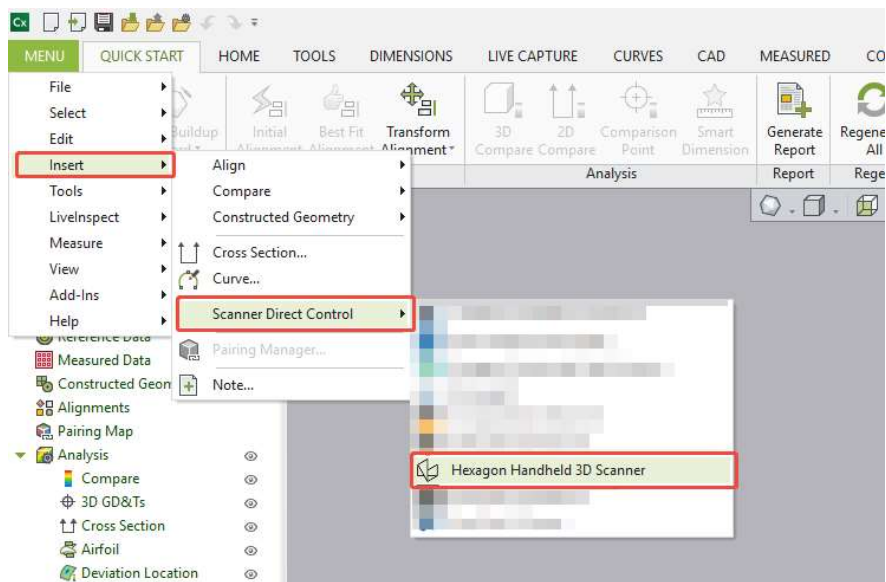


# Scanner Direct Control

## Scanner Interface – Geomagic

Plug-in allows users to set parameters and control the start and stop of the scanning process within Geomagic.

**STEP ONE:** Click MENU and Insert, select Scanner Direct Control to locate this function.

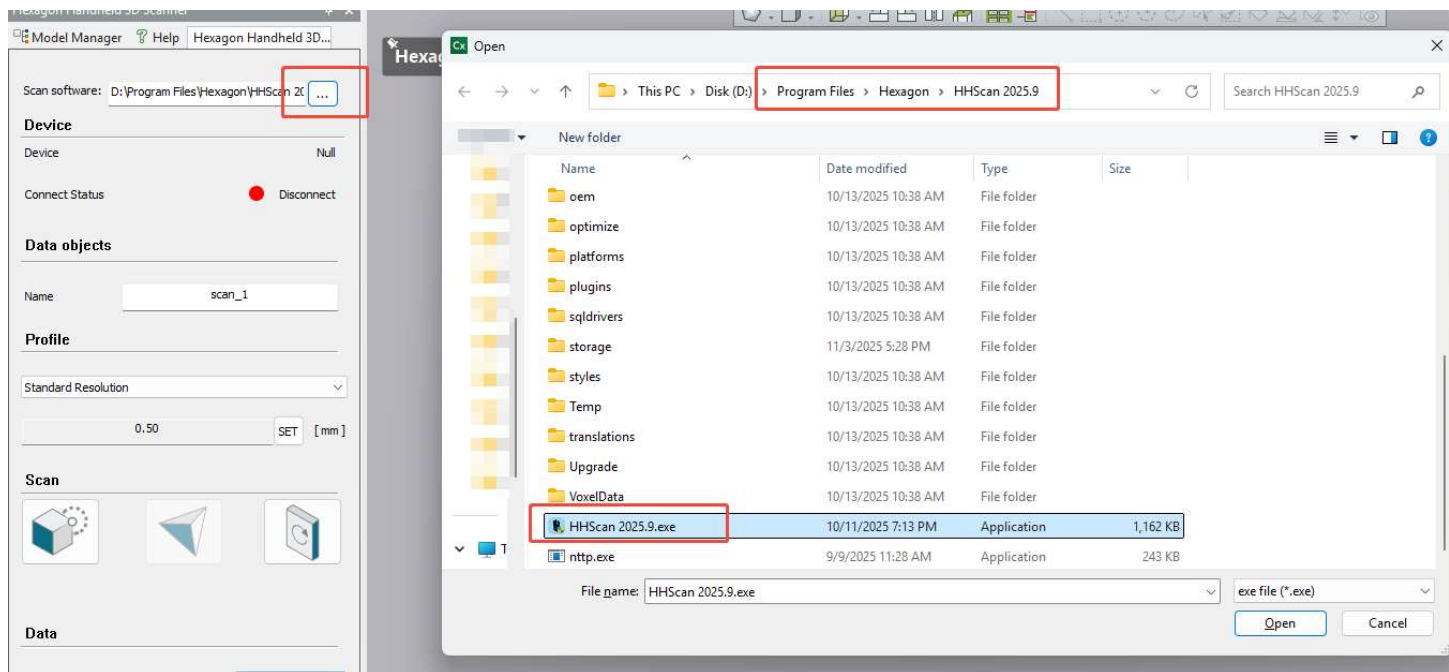


Tip: Scanner interface supports both Geomagic Control X and Geomagic Design X. This article uses Geomagic Control X as a reference for operational instructions; the procedures for Geomagic Design X are the same.

# Scanner Direct Control

## Scanner Interface – Geomagic

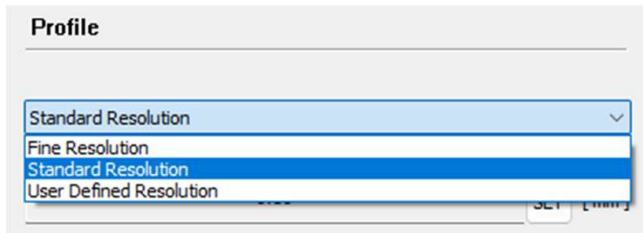
**STEP TWO:** Set the HHScan / Innov3D\* installation path the first time you use the plugin. After that, the scanning interface will automatically launch the software.



# Scanner Direct Control

## Scanner Interface – Geomagic

**STEP THREE:** Once the Connection status turns green, HHScan / Innov 3D is connected to Geomagic. You can directly set parameters and start or stop scanning within Geomagic. After stopping the scan, the scanning data will be automatically transferred to Geomagic.



**Fine Resolution:** 0.1mm

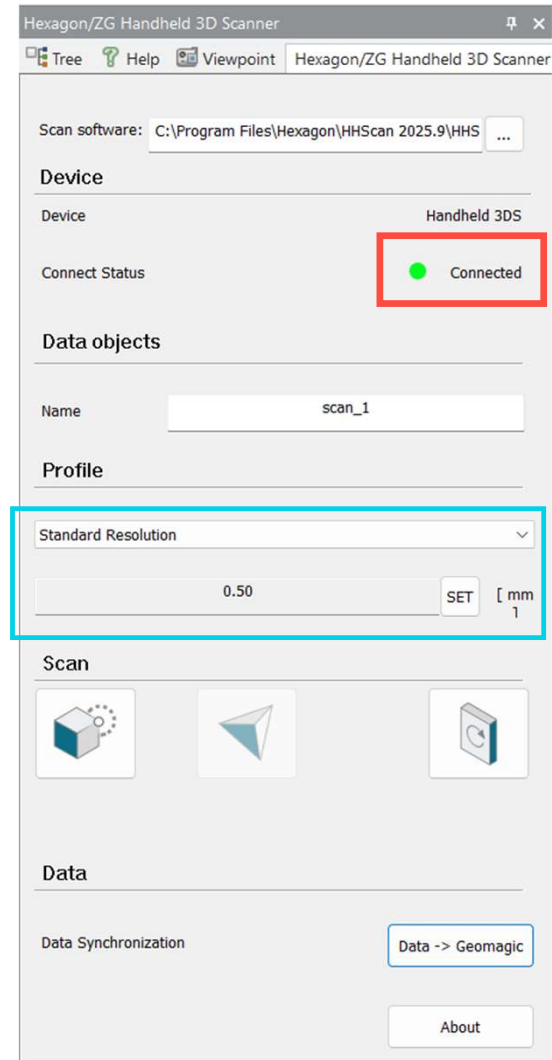
**Standard Resolution:** 0.5 mm

**Use Defined Resolution:** Input the value in the column and click “set”

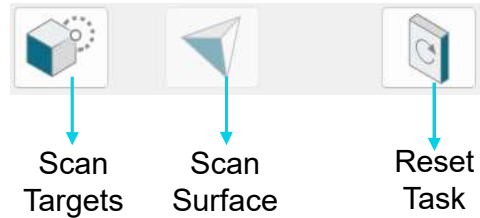
- Resolution range: 0.02mm~10mm.
  - For most scanning job, the resolution can be set between 0.2mm~2.0mm.

### Device

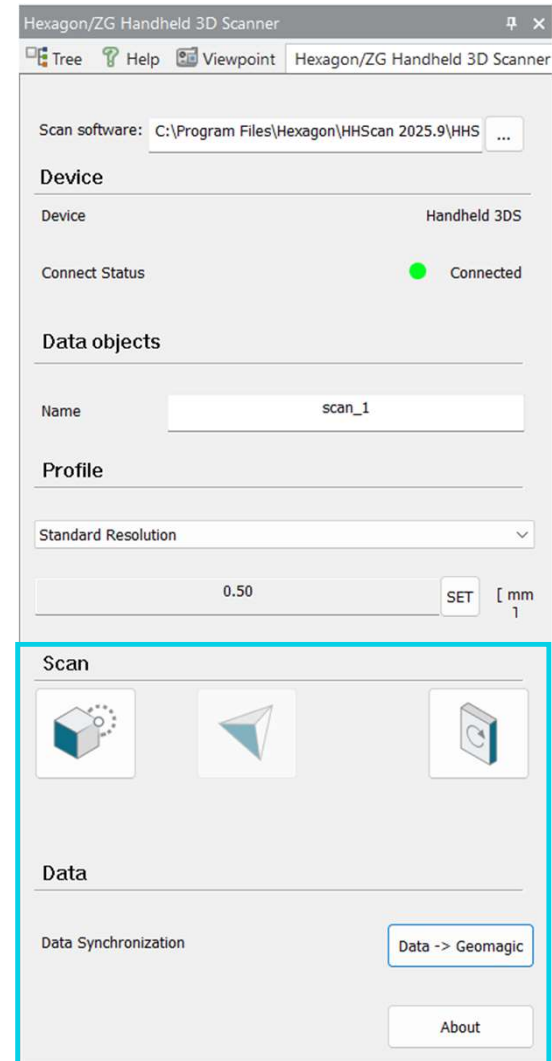
*Handheld 3DS:* CERE, RIGEL, ATLA & MARVEL  
*HYPERSCAN:* HYPERSCAN

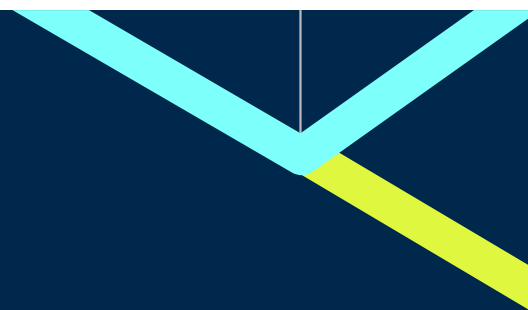


# Scanner Direct Control Scanner Interface – Geomagic



- **Scan Targets:** Clicking this button, the scanner will start scanning targets (no need to press center push-button again). Once completed, click it again to post-processing.
- **Scan Surface:** Clicking this button, the scanner will start scanning surface (no need to press center push-button again). Once completed, click it again to post-processing. After the post-processing is completed, the data will be automatically transferred to Geomagic.
- **Reset Task:** Reset session in the HHScan.
- **Data > Geomagic:** Alternative button to send scan data to Geomagic software
- **About:** Scanning interface version





If you have any questions, please  
contact local Hexagon representative.

THANK YOU