



OPERATOR'S MANUAL

SETTING UP INSTRUCTIONS

INTERNATIONAL[®]

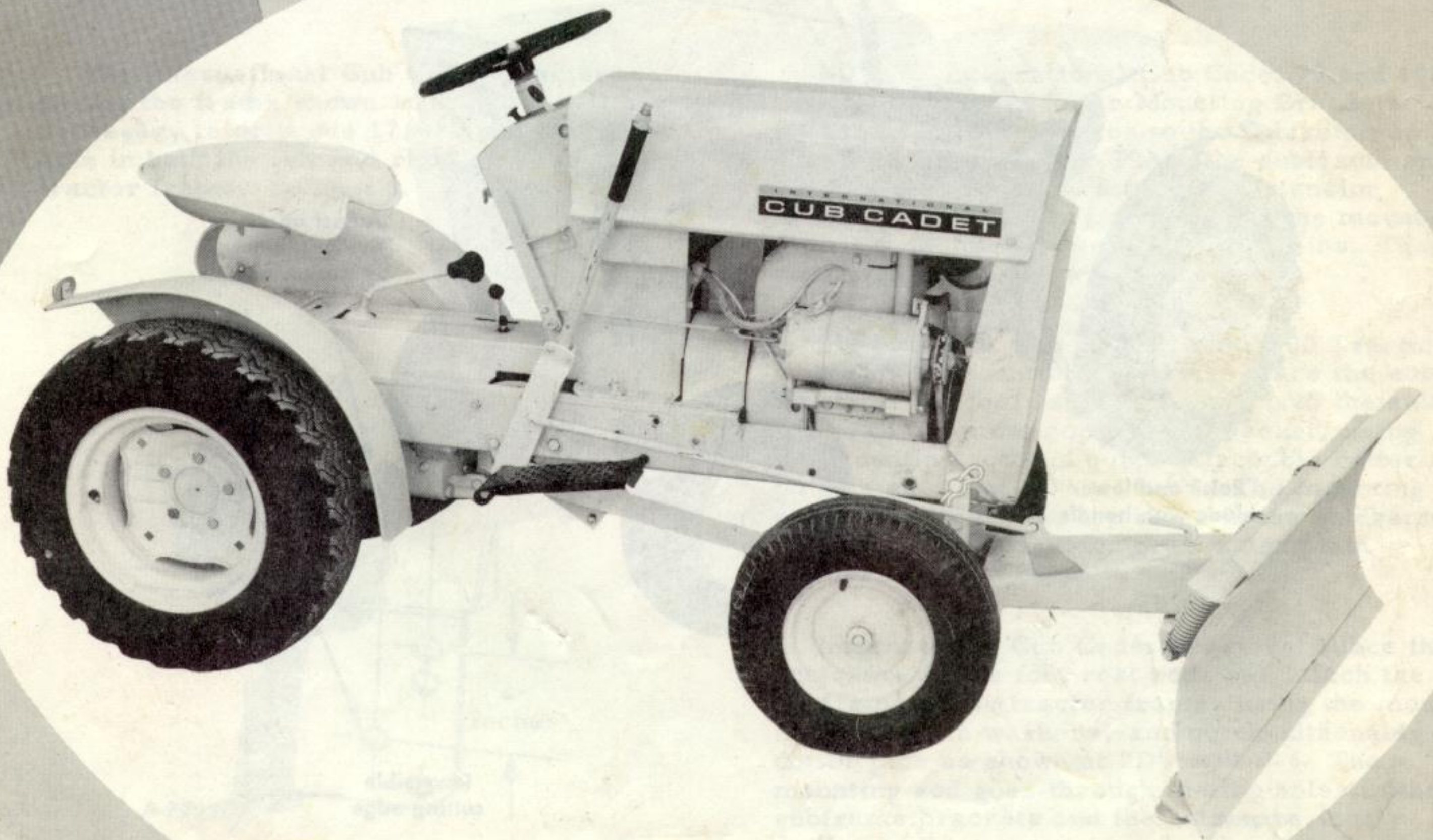
Blade

(42-inch)

with

Spring Trip

**OPERATION
MAINTENANCE
LUBRICATION**



This blade is designed for use on the International® Cub Cadet®, and International® Cub Cadet® 70 and 100 Tractors.

For snow removal operations, set the blade in the "free to float" position by depressing the release button on the lift handle and moving the wire bail over the top of the button.

OPERATION

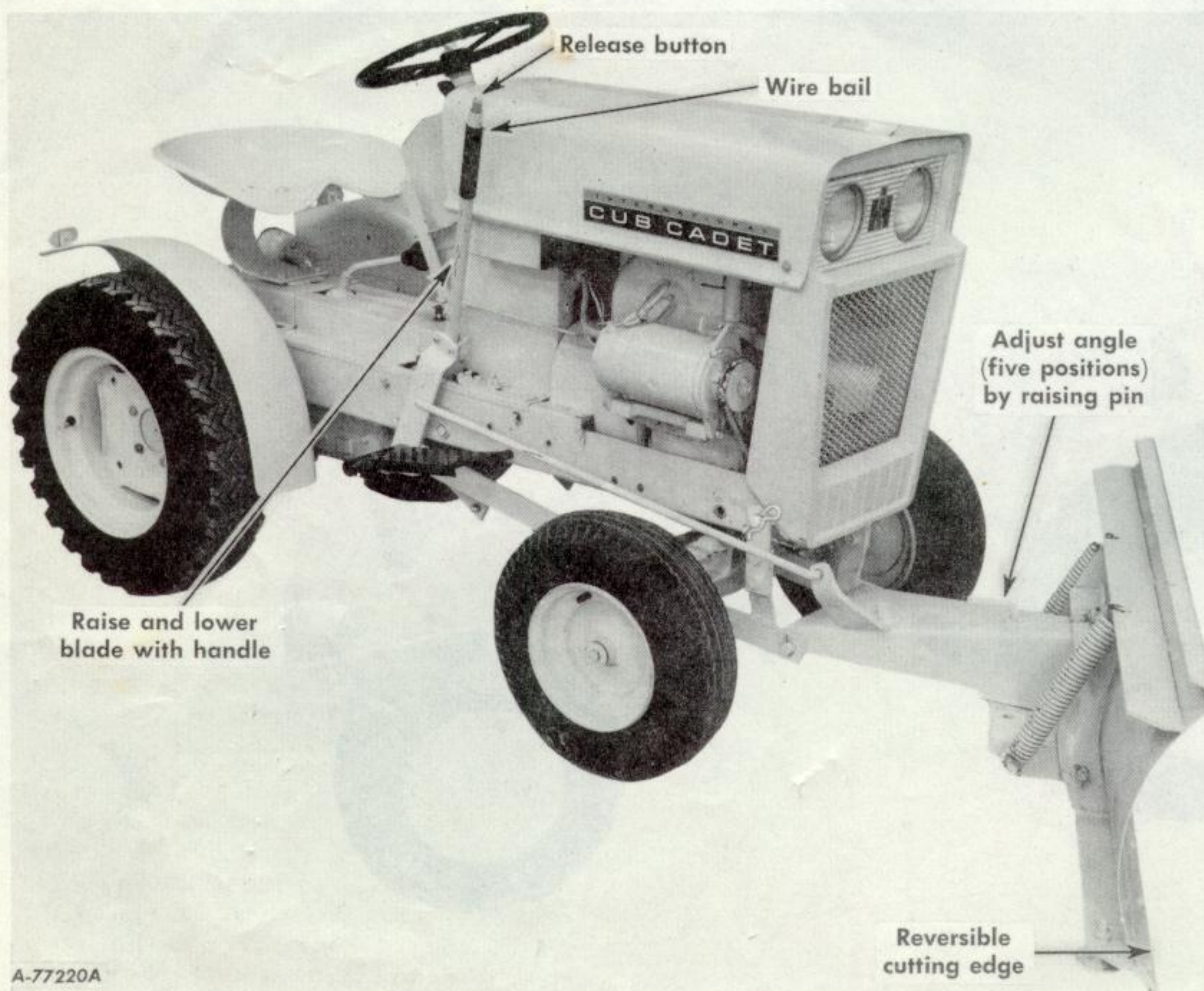
The blade is used primarily for clearing snow, leveling piles of soft dirt or sand, and other light-weight dozer jobs. The spring trip release protects the blade, tractor, and operator from severe shock loads when the blade comes in contact with curbs and other obstacles, regardless of speed. When clearing snow, the blade should always be unlocked so that the spring trip release is in operation. For grading and similar slow speed operations, the blade may be locked in the stationary position or unlocked for spring trip release.



Caution! Never operate the tractor at high speeds with the blade locked in a stationary position because a collision with a hidden obstacle may unseat the driver.

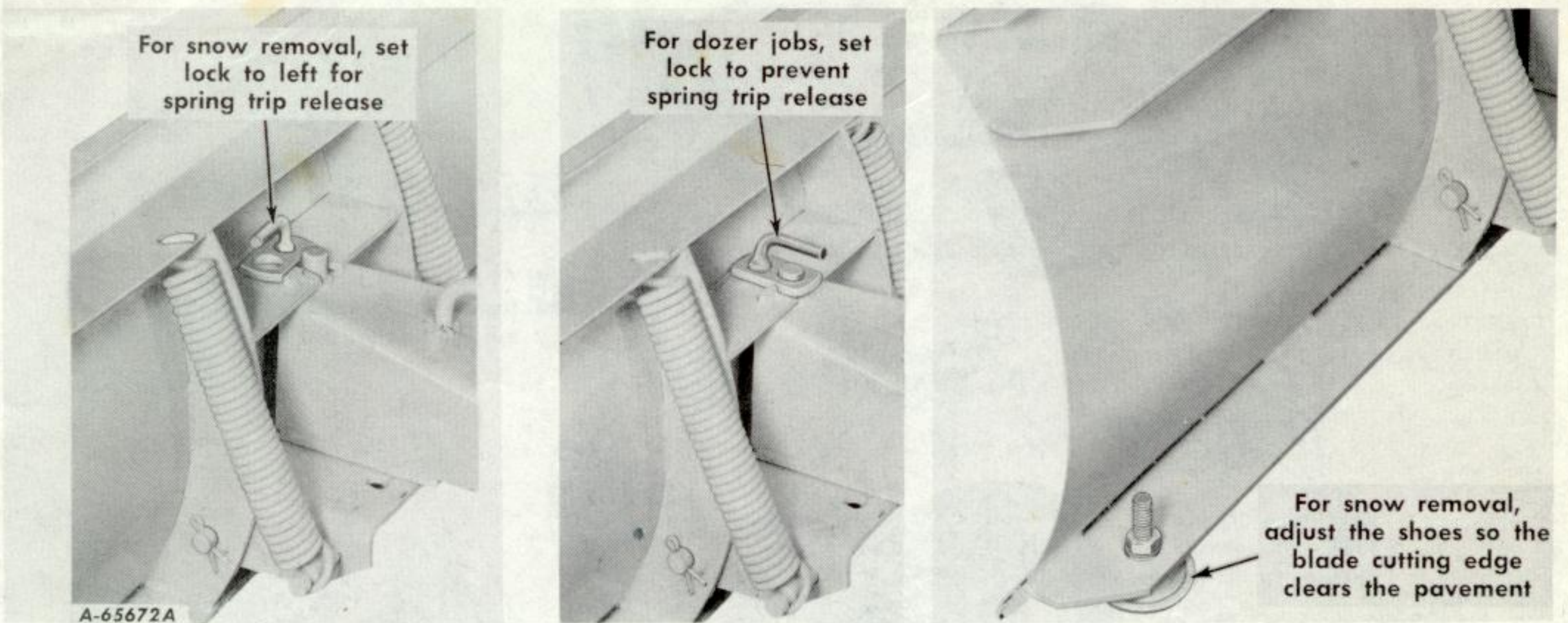
It is the policy of International Harvester Company to improve its products whenever it is possible and practical to do so. We reserve the right to make changes or add improvements at any time without incurring any obligation to make such changes on products sold previously.

ADJUSTING



Illust. 1

ADJUSTING - Continued

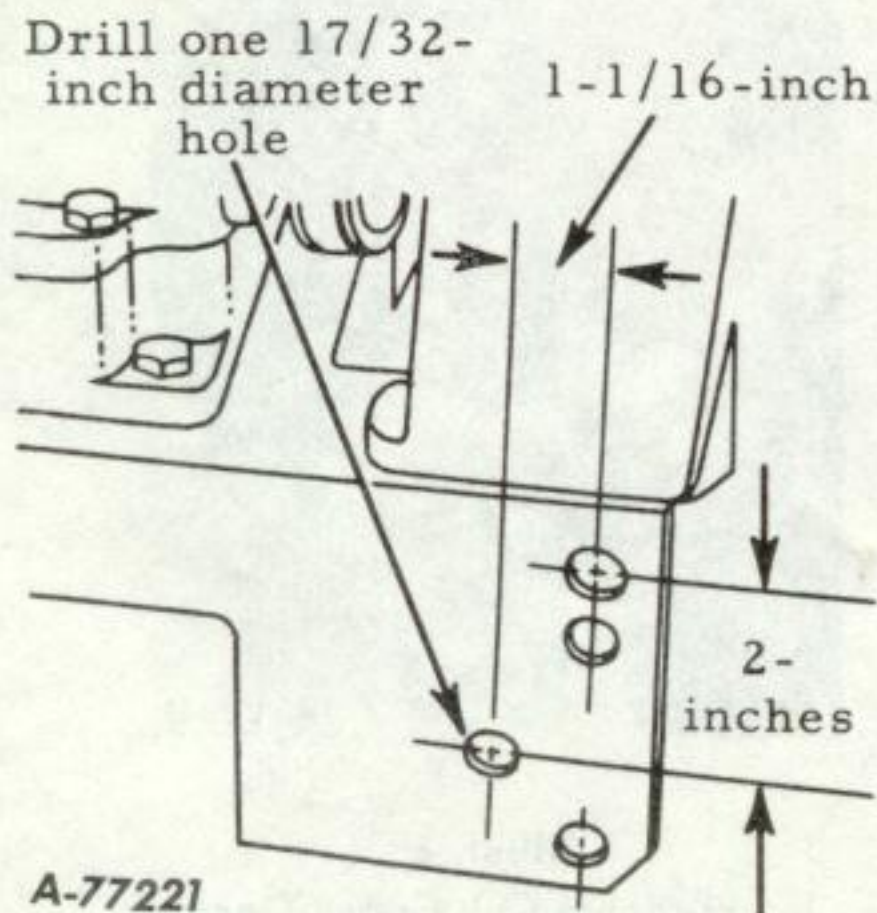


Illust. 2

ASSEMBLY

For International Cub Cadet Tractors having the frame shown in Illust. 3, it will be necessary to drill one 17/32-inch diameter hole in both the left and right sides of the tractor frame. See Illust. 3.

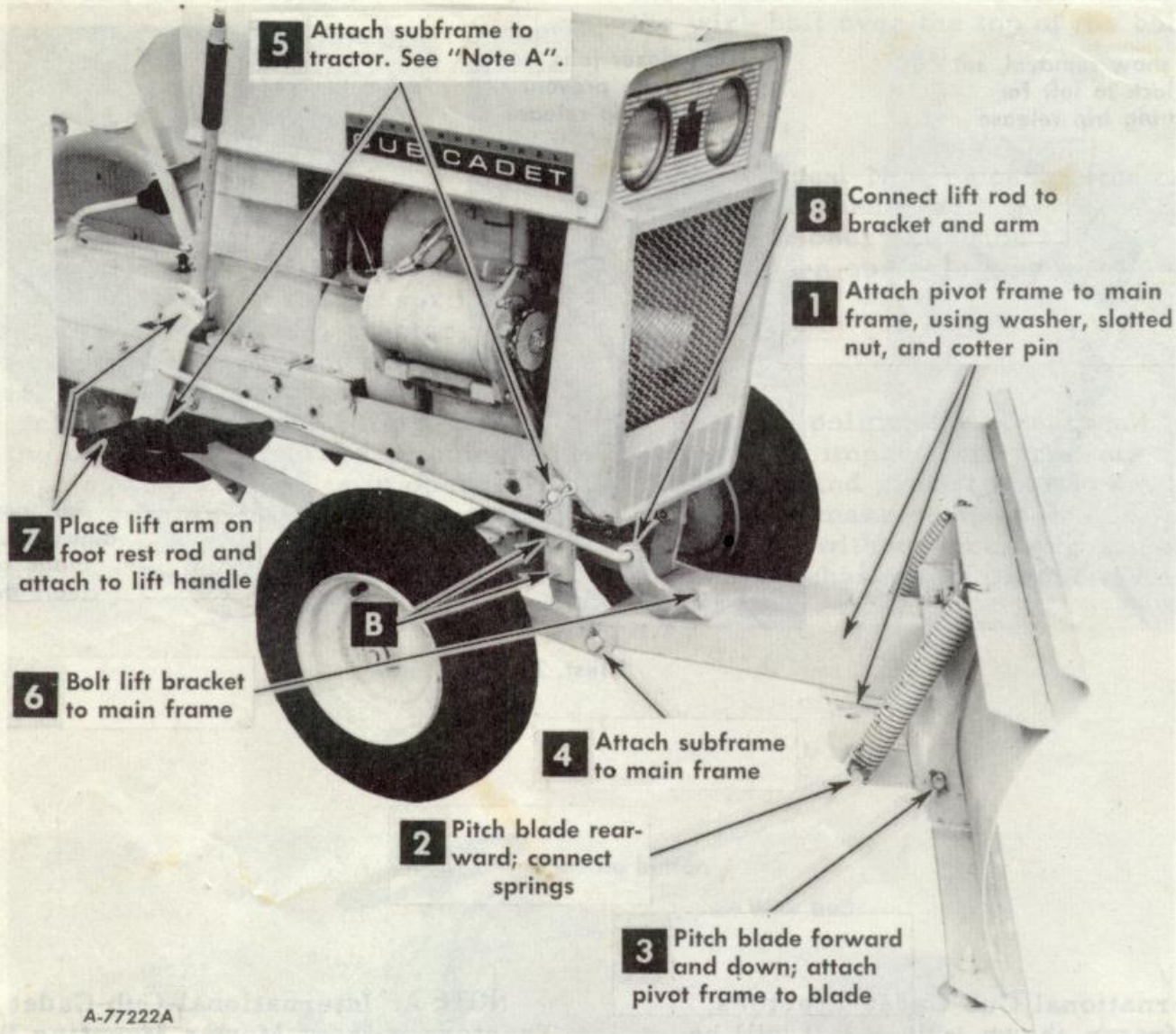
NOTE A: International Cub Cadet 70 and 100 Tractors without Mower Mounting Brackets: Bolt the extension braces to the subframe as shown at "B" in Illust. 4. Place the subframe on the foot rest rods and attach the extension braces to the tractor frame, using the mounting rod and quick-attachable cotter pins. The plain washers provided are not used.



Illust. 3
Right side of frame is shown.

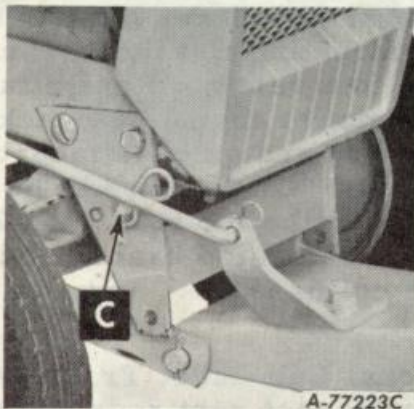
International Cub Cadet 70 and 100 Tractors with Mower Mounting Brackets: Place the subframe on the foot rest rods and attach the subframe to the mower mounting bracket, using the mounting rod and quick-attachable cotter pins as shown at "C" in Illust. 5. The mounting rod goes through the top holes in the subframe brackets. The extension braces and plain washers are not used.

International Cub Cadet Tractors: Place the subframe on the foot rest rods and attach the subframe to the tractor frame, using the mounting rod, plain washers, and quick-attachable cotter pins as shown at "D" in Illust. 6. The mounting rod goes through the top holes in the subframe brackets and the holes previously drilled in the tractor frame. The plain washers go between the subframe brackets and the tractor frame. The extension braces are not used.



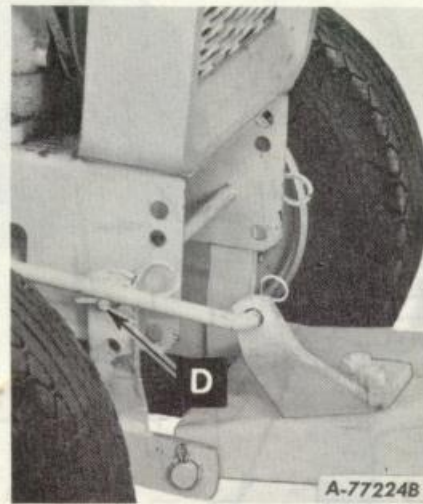
A-77222A

Illust. 4
International Cub Cadet 70 and 100 Tractors without
mower mounting brackets.



A-77223C

Illust. 5
International Cub Cadet 70 and
100 Tractors with mower
mounting brackets.



A-77224B

Illust. 6
International Cub Cadet Tractor.

INTERNATIONAL HARVESTER COMPANY
180 NORTH MICHIGAN AVE. CHICAGO 1, ILLINOIS, U.S.A.