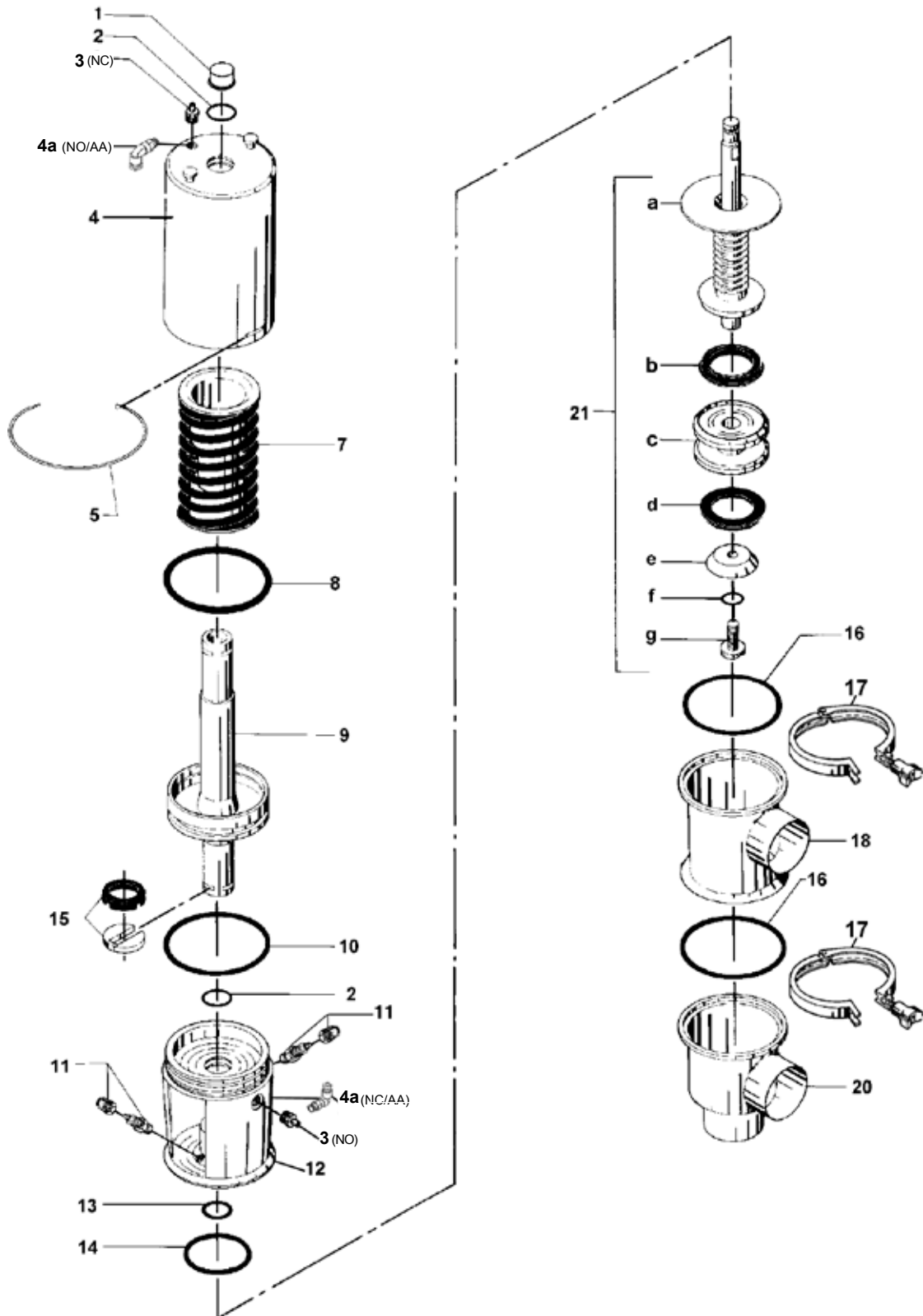


Alfa Laval



Asceptic Remote Controlled Valve ARC-SB Divert Valve

Actuator

Pos.	Qty.	Description	1.5" Part No.	2" Part No.	2.5" Part No.
	1	Complete actuator-10 (NO) industrial	9612-1884-01	9612-1884-01	9612-1884-01
	1	Complete actuator-20 (NC) industrial	9612-1884-02	9612-1884-02	9612-1884-02
	1	Complete actuator-30 (A/A) industrial	9612-1884-03	9612-1884-03	9612-1884-03
	1	Complete actuator-10 (NO) polished	9612-1884-06	9612-1884-06	9612-1884-06
	1	Complete actuator-20 (NC) polished	9612-1884-07	9612-1884-07	9612-1884-07
1	1	Cap	31801-0525-6	31801-0525-6	31801-0525-6
2Δ	2	O-ring, NBR	223406-25	223406-25	223406-25
3	1	Exhaust plug (NO)	31353-0154-1	31353-0154-1	31353-0154-1
	1	Exhaust plug (NC)	31353-0154-1	31353-0154-1	31353-0154-1
4	1	Cylinder	31353-0139-1	31353-0139-1	31353-0139-1
4a	1	Air fitting (NO)	881249420	881249420	881249420
	1	Air fitting (NC)	881249420	881249420	881249420
	2	Air fitting (A/A)	881249420	881249420	881249420
5Δ	1	Lock wire	31353-0151-1	31353-0151-1	31353-0151-1
7	1	Spring assembly (standard black)	31353-0625-1	31353-0625-1	31353-0625-1
	1	Spring assembly with strong spring (white)	31353-0625-2	31353-0625-2	31353-0625-2
8Δ	1	O-ring, NBR	223401-74	223401-74	223401-74
9	1	Piston for NO and NC	31353-0621-1	31353-0621-1	31353-0621-1
	1	Piston for Air/Air	31353-0621-2	31353-0621-2	31353-0621-2
10Δ	1	O-ring, NBR	223406-67	223406-67	223406-67
11	1	Drain tube	31801-1444-1	31801-1444-1	31801-1444-1
12	1	Bonnet	9612-1881-01	9612-1881-01	9612-1881-01
13Δ	1	O-ring	9611-99-0011	9611-99-0011	9611-99-0011
14Δ	1	O-ring	9611-99-2620	9611-99-2620	9611-99-2620
15Δ	1	Clip complete	31353-0793-1	31353-0793-1	31353-0793-1
Δ	1	Service kit for actuator	9611-92-0255	9611-92-0255	9611-92-0255

Parts marked with Δ are included in the actuator service kit.

Valve Parts

Pos.	Qty.	Description	1.5" Part No.	2" Part No.	2.5" Part No.
Seal rings					
16m	2	Seal ring, EPDM (standard)	31353-0128-1	31353-0128-1	31353-0128-1
	2	Seal ring, NBR	31353-0128-2	31353-0128-2	31353-0128-2
	2	Seal ring, FPM	31353-0128-3	31353-0128-3	31353-0128-3
	2	Seal ring, PTFE	31353-0128-4	31353-0128-4	31353-0128-4
Clamp					
17	2	Heavy duty clamp	9612-0112-04	9612-0112-04	9612-0112-04
Valve body (industrial)					
18	1	Upper valve body, 1 port, weld	31353-0053-1	31353-0054-1	31353-0055-1
	1	Upper valve body, 2 ports, weld	31353-0053-6	31353-0054-6	31353-0055-6
20	1	Lower valve body, 2 ports, weld	31353-0375-1	31353-0376-1	31353-0380-1
	1	Lower valve body, 3 ports, weld	31353-0375-6	31353-0376-6	31353-0380-6

Recommended Spare Parts: Service kit

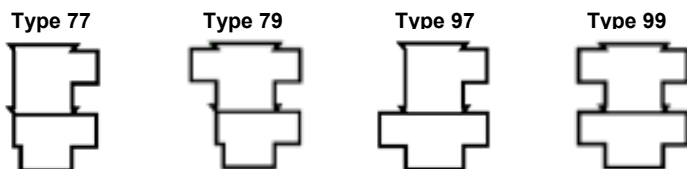


Valve Parts (continued)

Pos.	Qty.	Description	1.5" Part No.	2" Part No.	2.5" Part No.
Valve body (polished)					
18	1	Upper valve body, 1 port, weld	31353-1105-1	31353-1106-1	31353-1107-1
	1	Upper valve body, 1 port, GC	31353-103210	31353-1032-2	31353-1032-3
	1	Upper valve body, 2 ports, weld	31353-1105-2	31353-1106-2	31353-1107-2
	1	Upper valve body, 2 ports, GC	31353-103310	31353-1033-2	31353-0070-8
20	1	Lower valve body, 1 port, GC	31353-103010	31353-1030-2	31353-1030-3
	1	Lower valve body, 2 ports, weld	31353-1100-1	31353-1101-1	31353-1102-1
	1	Lower valve body, 2 ports, GC	31353-103110	31353-1031-2	31353-1031-3
	1	Lower valve body, 3 ports, weld	31353-1100-2	31353-1101-2	31353-1102-2
Valve plug					
21	1	Plug double, complete, EPDM (standard)	96121-5855-04	9612-5853-05	9612-5853-06
	1	Plug double, complete, NBR	9612-4207-10	9612-4207-11	9612-4207-12
	1	Plug double, complete, FPM	9612-4207-16	9612-4207-17	9612-4207-18
	1	Plug double, complete, PTFE	9612-4207-22	9612-4207-23	9612-4207-24
a	1	Stem double	9612-4206-04	9612-4206-05	9612-4206-06
b _m	1	Seal ring upper, EPDM (standard)	31353-0321-1	31353-0321-1	31353-0323-1
	1	Seal ring upper, NBR	31353-0321-2	31353-0321-2	31353-0323-2
	1	Seal ring upper, FPM	31353-0321-3	31353-0321-3	31353-0323-3
	1	Seal ring upper, PTFE	31353-1212-1	31353-1212-1	31353-1216-1
c	1	Middle piece	31353-0363-1	31353-0364-1	31353-0365-1
d _m	1	Seal ring lower, EPDM (standard)	31353-0320-1	31353-0321-1	31353-0322-1
	1	Seal ring lower, NBR	31353-0320-2	31353-0321-2	31353-0322-2
	1	Seal ring lower, FPM	31353-0320-3	31353-0321-3	31353-0322-3
	1	Seal ring lower, PTFE	31353-1211-1	31353-1212-1	31353-1213-1
e	1	Washer	31353-1010-1	31353-1010-2	31353-1010-3
f _m	1	O-ring, EPDM (standard)	990034-01	990034-01	990034-01
	1	O-ring, NBR	223404-21	223404-21	223404-21
	1	O-ring, FPM	223404-35	223404-35	223404-35
	1	O-ring, PTFE	9612-4330-01	9612-4330-01	9612-4330-01
g	1	Screw	31353-1011-1	31353-1011-1	31353-1011-1
m	1	Service kit for valve, EPDM	9611-92-0334	9611-92-0338	9611-92-0342
m	1	Service kit for valve, NBR	9611-92-0335	9611-92-0339	9611-92-0343
m	1	Service kit for valve, FPM	9611-92-0336	9611-92-0340	9611-92-0344
m	1	Service kit for valve, PTFE	9611-92-0337	9611-92-0341	9611-92-0345

Parts marked with _m are included in the valve service kits.

Valve Body Combinations:



Recommended Spare Parts: Service kit

