



## Non - Return Valve Type LKC-1

For welding - AISI 304

Pos.	Qty.	Denomination	9611-25-321-0 25 mm	9611-25-322-0 38 mm	9611-25-323-0 51 mm	9611-25-324-0 63.5 mm	9611-25-325-0 76 mm
1	1	Valve body .....					
2	1	Welding liner .....					
3	1	Valve cone .....	9611-25-351-0	9611-25-352-0	9611-25-353-0	9611-25-354-0	9611-25-355-0
4	1	Guide plate .....	9611-25-346-0	9611-25-347-0	9611-25-348-0	9611-25-349-0	9611-25-350-0
5	1	Clamp ring .....	9611-31-105-2	9611-31-105-3	9611-31-105-4	9611-31-105-5	9611-31-105-6
6 <sup>Δ</sup>	1	Seal ring (EPDM) .....	9611-25-315-0	9611-25-315-1	9611-25-315-2	9611-25-315-3	9611-25-315-4
7 <sup>Δ</sup>	1	O-ring (EPDM) .....	9611-99-0016	9611-99-0016	9611-99-0016	9611-99-0016	9611-99-0016
8 <sup>Δ</sup>	1	O-ring (EPDM) .....	9611-99-0063	9611-99-0015	9611-99-0064	9611-99-0065	9611-99-0066
9	1	Spring .....	9611-99-1677	9611-99-1678	9611-99-1679	9611-99-1680	9611-99-1681
Δ		<b>Service kit EPDM .....</b>	<b>9611-92-4026</b>	<b>9611-92-4027</b>	<b>9611-92-4028</b>	<b>9611-92-4029</b>	<b>9611-92-4030</b>

For welding - AISI 316

Pos.	Qty.	Denomination	9611-25-321-1 25 mm	9611-25-322-1 38 mm	9611-25-323-1 51 mm	9611-25-324-1 63.5 mm	9611-25-325-1 76 mm
1	1	Valve body .....					
2	1	Welding liner .....					
3	1	Valve cone .....	9611-25-351-1	9611-25-352-1	9611-25-353-1	9611-25-354-1	9611-25-355-1
4	1	Guide plate .....	9611-25-346-1	9611-25-347-1	9611-25-348-1	9611-25-349-1	9611-25-350-1
5	1	Clamp ring .....	9611-31-105-2	9611-31-105-3	9611-31-105-4	9611-31-105-5	9611-31-105-6
6 <sup>Δ</sup>	1	Seal ring ring (EPDM) .....	9611-25-315-0	9611-25-315-1	9611-25-315-2	9611-25-315-3	9611-25-315-4
7 <sup>Δ</sup>	1	O-ring (EPDM) .....	9611-99-0016	9611-99-0016	9611-99-0016	9611-99-0016	9611-99-0016
8 <sup>Δ</sup>	1	O-ring (EPDM) .....	9611-99-0063	9611-99-0015	9611-99-0064	9611-99-0065	9611-99-0066
9	1	Spring .....	9611-99-1677	3611-99-1678	9611-99-1679	9611-99-1680	9611-99-1681
Δ		<b>Service kit EPDM .....</b>	<b>9611-92-4026</b>	<b>9611-92-4027</b>	<b>9611-92-4028</b>	<b>9611-92-4029</b>	<b>9611-92-4030</b>

Parts marked with <sup>Δ</sup> are included in the **Service kit**.

Not manufactured anymore

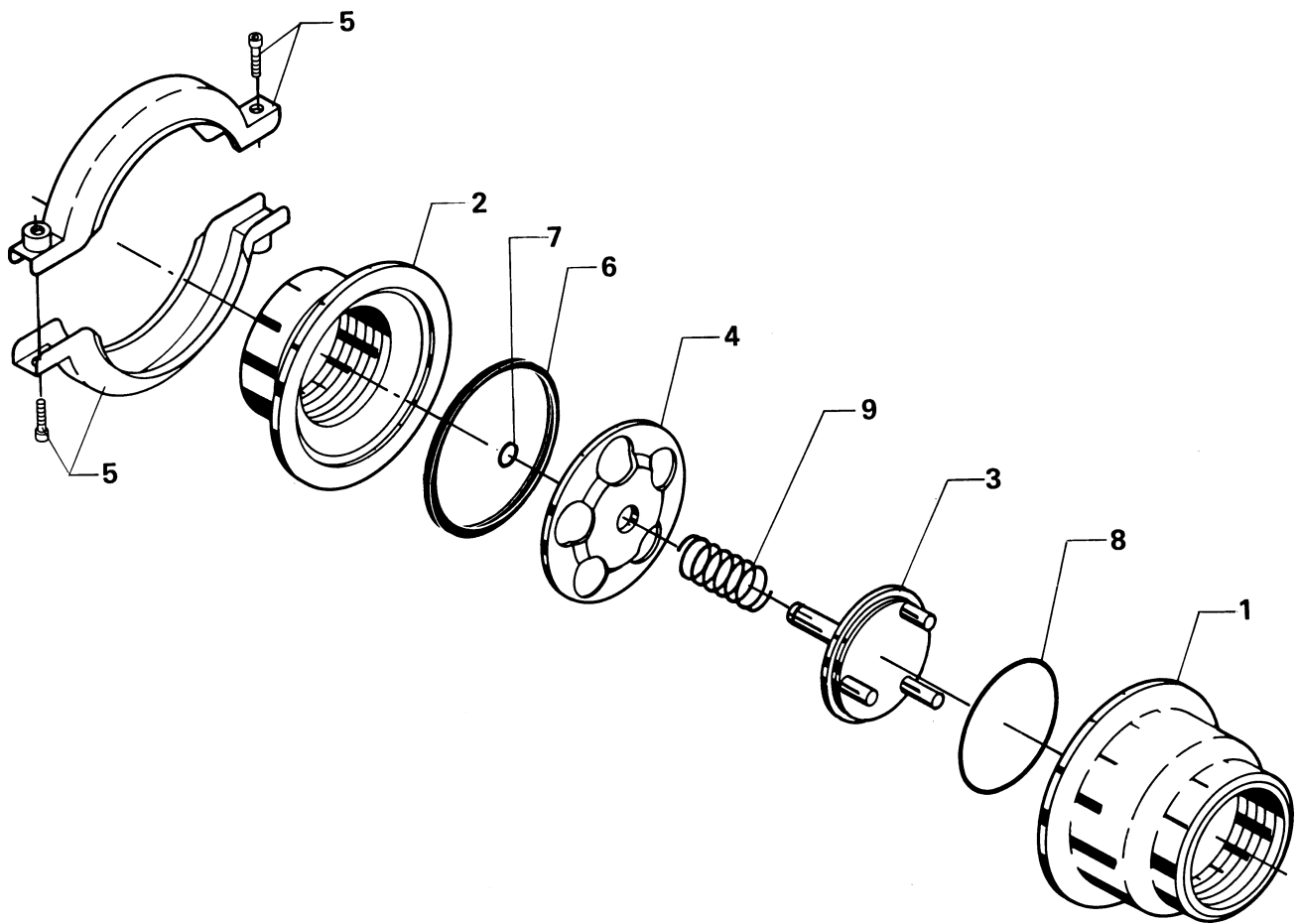
Recommended spare parts: **Service kits**.

Reg. 2.16.12	9805
Intro.	8012

Non - Return Valve  
Type LKC-1

---

Not manufactured anymore



---

Reg. 2.16.13	9805
Intro.	8012



## Non - Return Valve Type LKC-1

For expanding - AISI 304

Pos.	Qty.	Denomination	9611-25-321-0 25 mm	9611-25-322-0 38 mm	9611-25-323-0 51 mm	9611-25-324-0 63.5 mm	9611-25-325-0 76 mm
1	1	Valve body .....					
2	1	Expanding liner .....					
3	1	Valve cone .....	9611-25-351-0	9611-25-352-0	9611-25-353-0	9611-25-354-0	9611-25-355-0
4	1	Guide plate .....	9611-25-346-0	9611-25-347-0	9611-25-348-0	9611-25-349-0	9611-25-350-0
5	1	Clamp ring .....	9611-31-105-2	9611-31-105-3	9611-31-105-4	9611-31-105-5	9611-31-105-6
6 <sup>Δ</sup>	1	Seal ring (EPDM) .....	9611-25-315-0	9611-25-315-1	9611-25-315-2	9611-25-315-3	9611-25-315-4
7 <sup>Δ</sup>	1	O-ring (EPDM) .....	9611-99-0016	9611-99-0016	9611-99-0016	9611-99-0016	9611-99-0016
8 <sup>Δ</sup>	1	O-ring (EPDM) .....	9611-99-0063	9611-99-0015	9611-99-0064	9611-99-0065	9611-99-0066
9	1	Spring .....	9611-99-1677	9611-99-1678	9611-99-1679	9611-99-1680	9611-99-1681
<sup>Δ</sup>		<b>Service kit EPDM .....</b>	<b>9611-92-4026</b>	<b>9611-92-4027</b>	<b>9611-92-4028</b>	<b>9611-92-4029</b>	<b>9611-92-4030</b>

For expanding - AISI 316

Pos.	Qty.	Denomination	9611-25-321-1 25 mm	9611-25-322-1 38 mm	9611-25-323-1 51 mm	9611-25-324-1 63.5 mm	9611-25-325-1 76 mm
1	1	Valve body .....					
2	1	Welding liner .....					
3	1	Valve cone .....	9611-25-351-1	9611-25-352-1	9611-25-353-1	9611-25-354-1	9611-25-355-1
4	1	Guide plate .....	9611-25-346-1	9611-25-347-1	9611-25-348-1	9611-25-349-1	9611-25-350-1
5	1	Clamp ring ring .....	9611-31-105-2	9611-31-105-3	9611-31-105-4	9611-31-105-5	9611-31-105-6
6 <sup>Δ</sup>	1	Seal ring ring (EPDM) .....	9611-25-315-0	9611-25-315-1	9611-25-315-2	9611-25-315-3	9611-25-315-4
7 <sup>Δ</sup>	1	O-ring (EPDM) .....	9611-99-0016	9611-99-0016	9611-99-0016	9611-99-0016	9611-99-0016
8 <sup>Δ</sup>	1	O-ring (EPDM) .....	9611-99-0063	9611-99-0015	9611-99-0064	9611-99-0065	9611-99-0066
9	1	Spring .....	9611-99-1677	3611-99-1678	9611-99-1679	9611-99-1680	9611-99-1681
<sup>Δ</sup>		<b>Service kit EPDM .....</b>	<b>9611-92-4026</b>	<b>9611-92-4027</b>	<b>9611-92-4028</b>	<b>9611-92-4029</b>	<b>9611-92-4030</b>

Parts marked with <sup>Δ</sup> are included in the **Service kit**.

Not manufactured anymore

Recommended spare parts: **Service kit**.

Reg. 2.16.13	9805
Intro.	8012