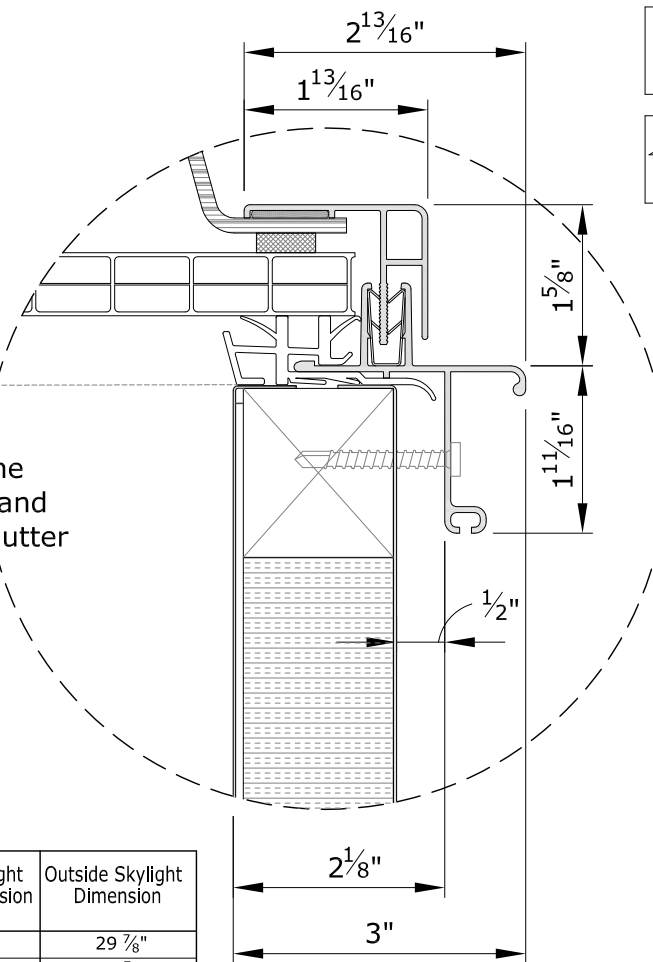
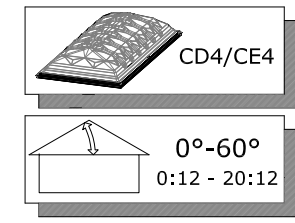


DETAIL 1

Size	Inside Curb Dimension	Maximum Skylight Clearance Dimension	Outside Skylight Dimension
2'	24"	28 1/4"	29 7/8"
3'	36"	40 1/4"	41 7/8"
4'	48"	52 1/4"	53 7/8"
5'	60"	64 1/4"	65 7/8"
6'	72"	76 1/4"	77 7/8"
8'	96"	100 1/4"	101 7/8"



DETAIL 2



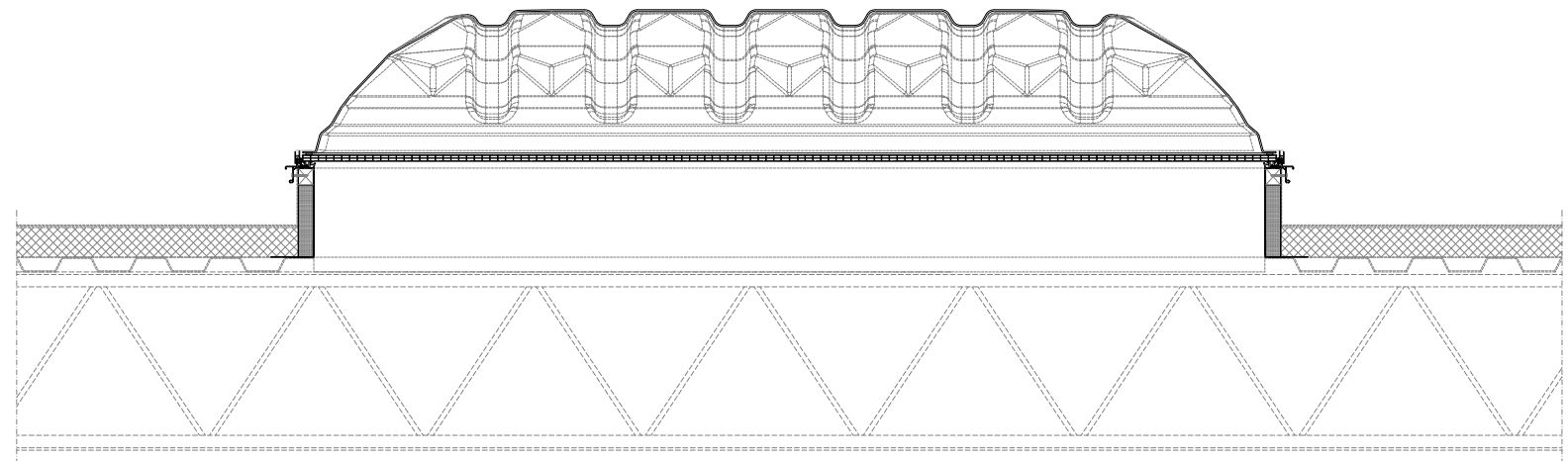
Energy Dome Skylight

Energy Dome Options			
Size - Width x Length (Using Inside Curb Dimensions)	Quantity	Dome Material*	Dome Description and Designation
		0.118 PC over 16mm Energy Material	Clear Smooth/Lumira (3P1L1) Clear Smooth/Multiwall (3P1W2) Max size 5x8

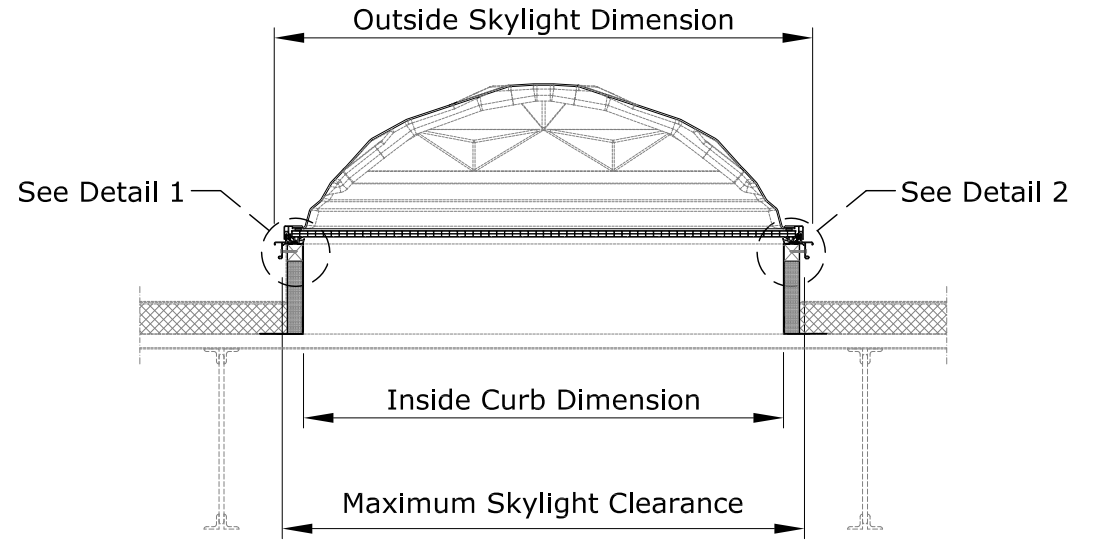
*Note: Dome Material thickness is sheet material's thickness prior to the manufacturing process.

Frame Finish Options	
<input type="checkbox"/> Mill Finish (CD4)	<input type="checkbox"/> Neutral Gray Powder Coat (CE4)

Curb Options	
Standard Curb Types	
<input type="checkbox"/> CCA3 (Steel, Double Wall Insulated)	<input type="checkbox"/> 18 Ga. & <input type="checkbox"/> 14 Ga.
<input type="checkbox"/> CCA6 (Steel, Single Wall Un-insulated)	<input type="checkbox"/> 18 Ga. & <input type="checkbox"/> 14 Ga.
<input type="checkbox"/> CCAM (Aluminum, Double Wall Insulated)	
<input type="checkbox"/> CCAN (Aluminum, Single Wall Insulated)	
Standard Curb Heights	
<input type="checkbox"/> 9"	
<input type="checkbox"/> 12"	
<input type="checkbox"/> 16"	
<input type="checkbox"/> 18" (Available for CCA3 & CCA6 Curb Types only)	



SECTION A-A




SECTION B-B

GENERAL NOTES

1. This drawing emphasizes the VELUX CD4/CE4 Dome Skylight. It illustrates a general arrangement layout (plus recommendations) for a VELUX CD4/CE4 Dome installation in a 0-60 degree roof pitch application. The CD4/CE4 Dome skylight installs directly on site built or prefabricated curbs.
2. The architectural/structural design and specifications for the inclusion of a commercial skylight, such as the VELUX CD4/CE4 Dome, in any roofing/ceiling application is determined and provided by others. The design criteria includes, but is not limited to design loads, structural configurations, structural framing member sizes and material, architectural finishes and integration with the roofing/ceiling systems of the building. VELUX recommends compliance by all designers and installers with all local and industry specific building codes and guidelines. VELUX assumes no responsibility or liability in the design, construction and performance of a building structure by others.
3. Model CD4 Frame is mill finish. Model CE4 Frame is powder coated neutral gray.

This drawing is an instrument of service and is provided for informational use only.



VELUX
Sky-Global Product Management

VELUX
1418 Evans Pond Road
Greenwood, SC 29649
1-800-88-VELUX
www.VELUXUSA.com

Energy Dome Skylight