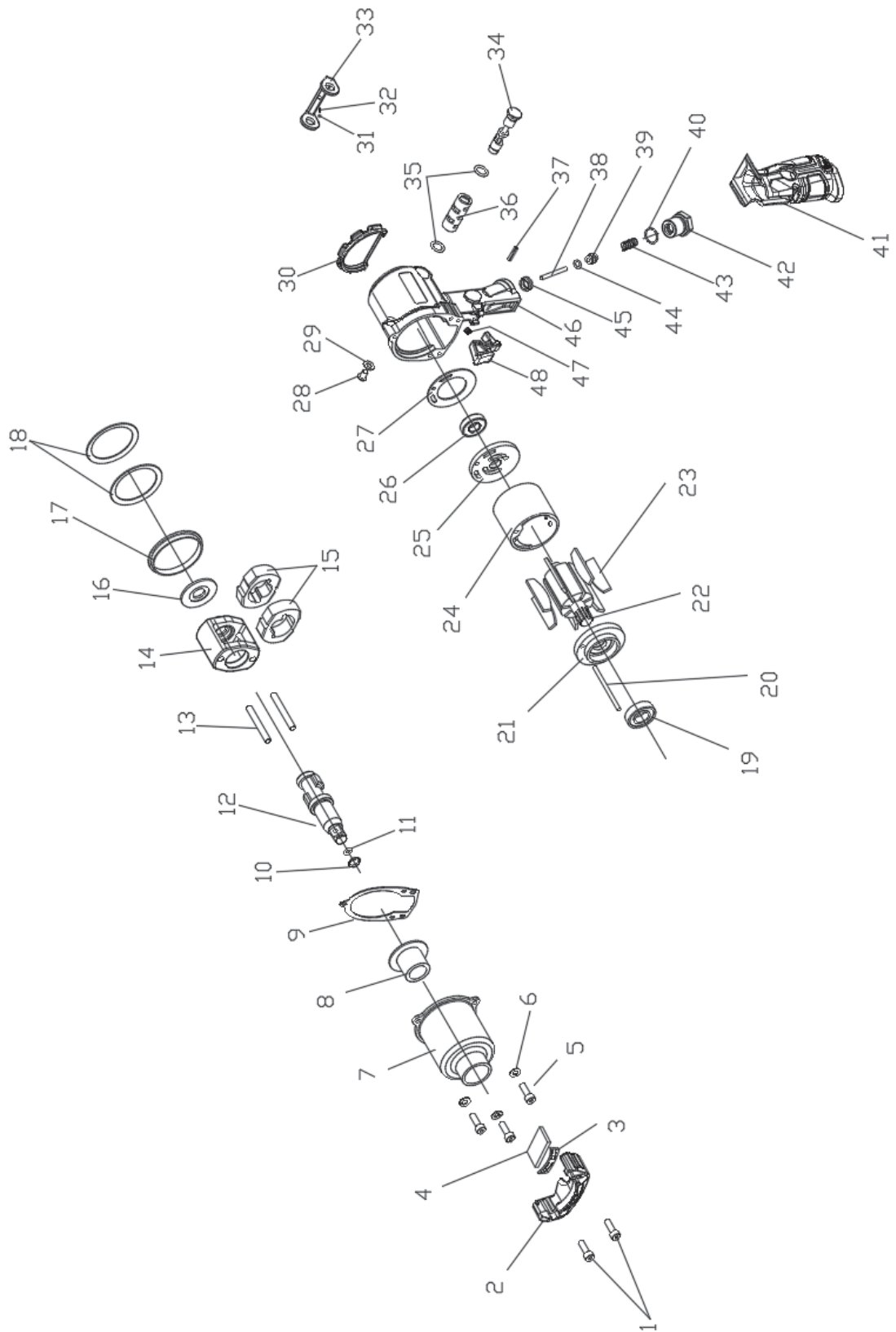


Exploded view



| Index No. | Description | Size | Number Required per unit |
|------------------|---------------------------------------|---------------------|---------------------------------|
| 1 | Hex Cap Bolt | M5x15L | 2 |
| 2 | Exhaust Cover | | 1 |
| 3 | Exhaust Plate | | 1 |
| 4 | Filter | | 1 |
| 5 | Hex Cap Bolt M5x18 | M5x18L | 3 |
| 6 | Washer, Spring M5 | M5 | 3 |
| 7 | Hammer Housing Complete | | 1 |
| 8 | Spindle Bush (Installed No. 7) | | 1 |
| 9 | Gasket, Hammer Housing | | 1 |
| 10 | Ring, Retainer (Installed No. 12) | | 1 |
| 11 | O-ring (Installed No. 12) | | 1 |
| 12 | Anvil Complete | | 1 |
| 13 | Pin, Hammer Cage | | 2 |
| 14 | Hammer cage | | 1 |
| 15 | Hammer | | 2 |
| 16 | Hammer cage washer | | 1 |
| 17 | Pilot Ring | | 1 |
| 18 | Spring | | 2 |
| 19 | Bearing 16002Z | 16002Z | 1 |
| 20 | Duel Pin | | 1 |
| 21 | Endplate, Front | | 1 |
| 22 | Rotor | | 1 |
| 23 | Blade, Rotor | | 7 |
| 24 | Cylinder | | 1 |
| 25 | Endplate, Rear | | 1 |
| 26 | Bearing 6001RS | 6001RS | 1 |
| 27 | Gasket, Motor | | 1 |
| 28 | Hex Cap Bolt with Extra-low Head M6x6 | M6x6L | 1 |
| 29 | Washer, Flat M6 | | 1 |
| 30 | Cover, Rear | | 1 |
| 31 | Ball, Stop | φ3.175 (1/8inch) | 1 |
| 32 | Spring, Stop | | 1 |
| 33 | Lever, Air Regulator | | 1 |
| 34 | Shaft, Reverse | | 1 |
| 35 | O-ring P10 | P10 | 2 |
| 36 | Bushing, Reverse (Installed No. 46) | | 1 |
| 37 | Pin, Spring P4x18 | φ4x18L | 1 |

| Index No. | Description | Size | Number Required per unit |
|------------------|------------------------------|-------------|---------------------------------|
| 38 | Throttle | | 1 |
| 39 | Valve | | 1 |
| 40 | O-ring | | 1 |
| 41 | Cover, Handle | | 1 |
| 42 | Bush, Air Coupling | | 1 |
| 43 | Spring, Valve | | 1 |
| 44 | O-ring | | 1 |
| 45 | Seat, Valve | | 1 |
| 46 | Motor Housing Complete | | 1 |
| 47 | Hex Screw (Installed No. 46) | | 1 |
| 48 | Lever, Throttle | | 1 |

Parts with () marked shall not be supplied individually even if ordered since it is an integrated component.

● The contents of this manual are subject to be changed without notice.