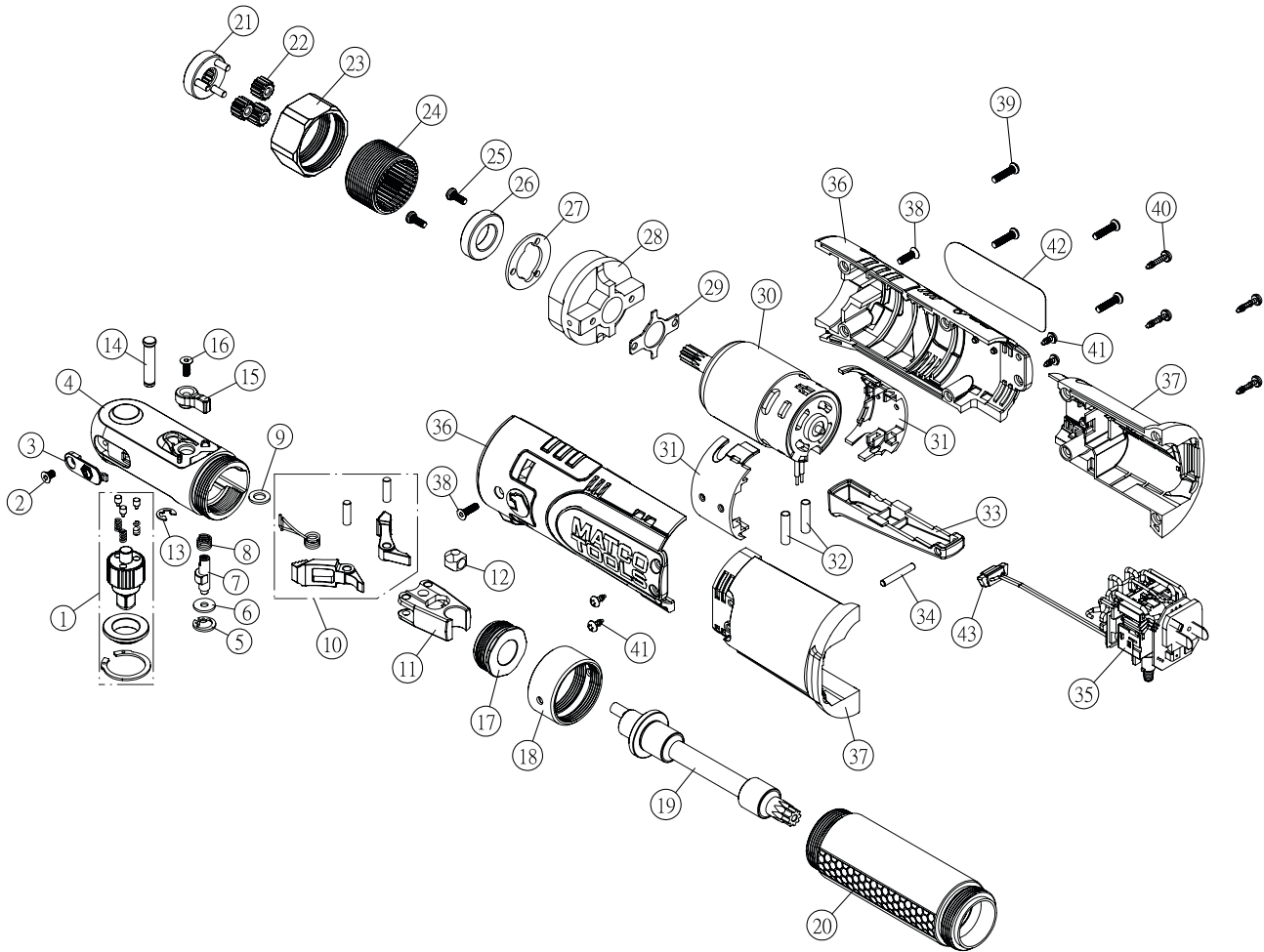


MCL1614SLRG 16V EXTENDED SEALED HEAD 1/4" RATCHET



REF NO.	PART NO.	DESCRIPTION	QTY.
1	RS161429	1/4" ANVIL KIT	1
2	RS161432	SCREW	1
3	RS161433	PLASTIC COVER	1
4	RS161434	RATCHET HOUSING ASSEMBLY	1
5	RS161435	C RING	1
6	RS161436	WASHER	1
7	RS161437	PIVOT	1
8	RS161438	SPRING	1
9	RS161439	WASHER	1
10	RS161440	PAWL & SPRING KIT	1
11	RS1614SLR11	RATCHET YOKE	1
12	RS161442	DRIVE BUSHING	1
13	RS161443	C RING	1
14	RS161444	SPINDLE	1
15	RS161445	FORWARD/REVERSE ROD	1
16	RS108MP11	SCREW	1
17	RS1614SLR17	RATCHET HEAD COVER	1
18	RS1614SLR18	NUT	1
19	RS1614SLR19	SPINDLE	1
20	RS1614SLR20	EXTENSION ASSEMBLY	1
21	RS1614SLR21	PLANETARY GEAR BASE	1
22	RS1614SLR22	PLANETARY GEARS (EACH)	3

REF NO.	PART NO.	DESCRIPTION	QTY.
23	RS161449	NUT	1
24	RS161450	RING GEAR	1
25	RS01804	SCREW (EACH)	2
26	RS12R02	BUSH	1
27	RS108R07	WASHER	1
28	RS108R09	MOTOR CONNECTOR	1
29	RS108MP10	WASHER	1
30	RS161451	MOTOR ASSEMBLY	1
31	RS1638SR28	INSULATION ASSEMBLY	1
32	RS1638SR30	HEAT SHRINKAGETUBE (EACH)	2
33	RS1638SR31	TRIGGER	1
34	RS163823	PIN	1
35	RS1614SLR35	PCB	1
36	RS1614SLR36G	HOUSING ASSEMBLY - GREEN	1
36	RS1614SLR36O	HOUSING ASSEMBLY - ORANGE	1
36	RS1614SLR36BL	HOUSING ASSEMBLY - BLUE	1
37	RS1638SR23	BATTERY HOUSING ASSEMBLY	1
38	RS108MP11	SCREW (EACH)	2
39	RS1638SR35	SCREW (EACH)	4
40	RS1638SR36	SCREW (EACH)	4
41	RS108L09	SCREW (EACH)	4
42	RSMCL1614SLRPLK	HOUSING LABEL - R	1