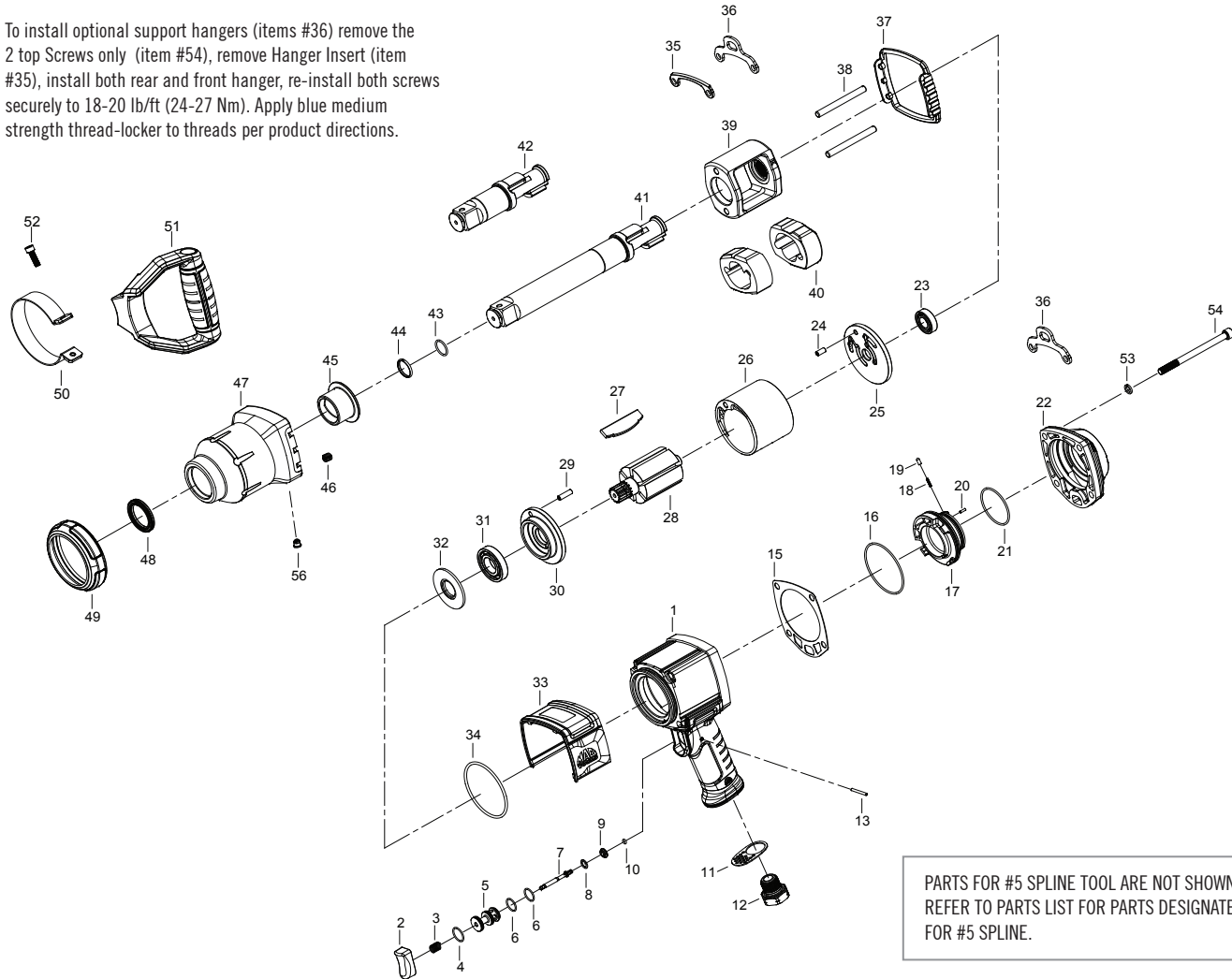


To install optional support hangers (items #36) remove the 2 top Screws only (item #54), remove Hanger Insert (item #35), install both rear and front hanger, re-install both screws securely to 18-20 lb/ft (24-27 Nm). Apply blue medium strength thread-locker to threads per product directions.



PARTS FOR #5 SPLINE TOOL ARE NOT SHOWN.
REFER TO PARTS LIST FOR PARTS DESIGNATED
FOR #5 SPLINE.

ITEM #	PART #	DESCRIPTION	QTY
	AWP099 AWP099-6 AWP099-S	Flush Anvil 6" Anvil 6" #5 Spline	
1	30H100081	Motor Housing Assembly	1
2	30Y201230	Trigger	1
5	30P200055	Throttle Valve Seat	1
7	30P200056	Valve Stem	1
8	30Y201234	Washer	1
9	30P200057	Throttle Valve	1
11	30Y201235	Exhaust Deflector	1
12	30Y201236	Air Inlet	1
13	30Y201237	Pin	1
15	30G200161	Backhead Gasket	1
17	30Y201239	Reverse Valve	1
19	30R200415	Pin	1
20	30R200428	Spring Pin	1
22	30Y201243	Rear Cover Plate	1
23	30R200416	Ball Bearing	1
24	30R200417	Spring Pin	1
25	30M200140	Rear End Plate Assembly (incl.23)	1
26	30M200141	Cylinder	1
28	30M200142	Rotor	1
29	30R200418	Spring Pin	1
30	30M200144	Front End Plate	1
31	30R200419	Ball Bearing	1
32	31R200149	Washer	1
33	30H200471	Motor Cover	1
35	30Y201094	Insert - Hanger	4
36	30Y201095	Hanger (Option)	2
37	30G200159	Gasket	1
38	30D200189	Hammer Pin	2
39	30D200190	Hammer Frame	1
*39-1	30D200190-1	Hammer Frame- #5 Spline	1
40	30D200191	Hammer	2
41	30D200192	1" Sq. Anvil - 6" Extended	1
42	30D200193	1" Sq. Anvil - Flush	1
45	30Y201091	Bushing	1

ITEM #	PART #	DESCRIPTION	QTY
*45-1	30Y201091-1	Bushing - #5 Spline	1
46	31R200196	Helix-Coil	4
47	30H100072	Hammer Case Assembly (incl. 45, 46, 48, 56)	1
*47-1	30H100072-1	Hammer Case Assembly- #5 Spline (incl.45-1, 46, 48-1, 56)	1
48	30R200422	Oil Seal	1
*48-1	30R200422-1	Oil Seal - #5 Spline	1
49	30Y201099	Rubber Boot Ring	1
50	30Y201098	Collar Clamp	1
51	30Y100012	Side Handle	1
52	31R100033	Screw	2
53	31R200148	Washer	4
54	30R200421	Screw	4
56	31R200138	Grease Fitting	1
	30M100147	Tune-Up Kit incl. following	
3	30Y201231	Spring	1
4	30R200426	O-Ring	1
6	30R200427	O-Ring	2
10	30R200410	O-Ring	1
16	30R200413	O-Ring	1
18	30R200414	Spring	1
21	30R200429	O-Ring	1
27	30M200143	Rotor Blade	6
34	30R200420	O-Ring	1
43	31R200192	O-Ring	1
44	31R200193	Socket Retainer	1
	30M100148	Tune-Up Kit #5 SPLINE (incl. 3, 4, 6(2), 10, 16, 18, 21, 27(6), 34, 43-1,44-1)	
*43-1	30R200424	O-Ring - #5 Spline	1
*44-1	30R200425	Socket Retainer - #5 Spline	1
	30D100069	ANVIL ASSEMBLY -1" SQ. 6" Extended	
41		1" Sq. Anvil - 6" Extended	1
43	31R200192	O-Ring	1
44	31R200193	Socket Retainer	1

ITEM #	PART #	DESCRIPTION	QTY
	30D100070	ANVIL ASSEMBLY - 1" SQ. Flush	
42		1" Sq. Anvil - Flush	1
43	31R200192	O-Ring	1
44	31R200193	Socket Retainer	1
	30D100071	IMPACT ASSEMBLY - 1" SQ. 6" EXT	
38	30D200189	Hammer Pin	2
39	30D200190	Hammer Frame	1
40	30D200191	Hammer	2
	30D100069	ANVIL ASSEMBLY -1" SQ. 6" Extended	
	30D100072	IMPACT ASSEMBLY - 1" SQ. Flush	
38	30D200189	Hammer Pin	2
39	30D200190	Hammer Frame	1
40	30D200191	Hammer	2
	30D100070	ANVIL ASSEMBLY - 1" SQ. Flush	
	30D100073	ANVIL ASSEMBLY - #5 SPLINE - Extended	
*41-1		#5 Spline Extended Anvil	1
*43-1	30R200424	O-Ring - #5 Spline	1
*44-1	30R200425	Socket Retainer - #5 Spline	1
	30D100075	IMPACT ASSEMBLY - #5 SPLINE - Extended	
38	30D200189	Hammer Pin	2
*39-1	30D200190-1	Hammer Frame- #5 Spline	1
40	30D200191	Hammer	2
*	30D100073	ANVIL ASSEMBLY - #5 SPLINE - Extended	

• Recommended not to be purchased alone due to assembly difficulty

* Not shown