

ST. LOUIS PNEUMATIC

Low-Speed Lighted Buffer with Q.C. Chuck SLP-6520L

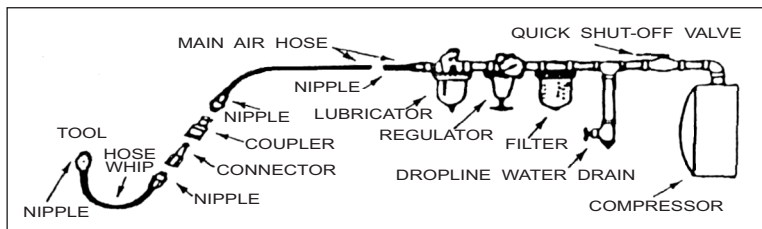
Owner's Manual

SAFETY INSTRUCTIONS

1. **REVIEW THIS ENTIRE MANUAL BEFORE OPERATING YOUR AIR TOOL.**
2. **BEFORE MOUNTING ACCESSORIES** and before placing tool in service, check the free running spindle speed with 90 PSI at the tool inlet. Periodically check the tool's free speed.
3. **ALWAYS WEAR APPROVED EYE PROTECTION.** Use a dust mask if the operation creates dust.
4. **PROTECT YOURSELF FROM NOISE.** Noise levels vary with work surface. If noise level is high, wear ear protectors.
5. **WEAR GLOVES AND PROTECTIVE CLOTHING** to avoid injuries caused by chips or pieces, malfunctioning attachments, or improperly clamped work.
6. **NEVER USE THIS AIR TOOL AT AIR PRESSURE ABOVE 90 PSI AT TOOL INLET. THIS IS AN UNGOVERNED TOOL AND ITS FREE SPEED WILL INCREASE IN PROPORTION TO ANY INCREASE IN AIR PRESSURE ABOVE 90 PSI.** Control air pressure with a reliable automatic air regulator. Periodically monitor air pressure at tool's air inlet while tool is running free speed.
7. **USE ONLY ACCESSORIES** with R.P.M. (speed) rating **AT** or **ABOVE** the **ACTUAL** free speed of the air tool. **THE RATED FREE RUNNING SPEED OF THIS TOOL** is 3,500 R.P.M.
8. **IN GENERAL TERM**, this tool is not suitable for underwater use or use in explosive environments.
9. **THIS BUFFER** is constructed with electronic components. Handle the tool carefully when not in use. **DO NOT DROP OR THROW TOOL ONTO BENCHES, FLOORS OR OTHER HARD SURFACES.**
10. **THE LIGHTED BUFFER** produces its light through the use of incandescent lamps. Lamp life depends primarily upon cycles (starting and stopping tool). Within a given period of time, the more cycles experienced, the shorter the life of the lamp. **RELAMP OFTEN FOR OPTIMUM PERFORMANCE. NEVER OPERATE THE TOOL WITH LESS THAN THREE LAMPS. REPLACE ALL LAMPS WHEN ONE OR MORE LAMPS FAIL.** It is suggested that the user maintain a stock of replacement lamps at all times. Contact your St. Louis Pneumatic distributor for replacement lamp packages (3 pk. - SLP-9701; 6 pk. - SLP-9702; 9 pk. - SLP-9703; 12 pk. - SLP-9704).
11. **DISCONNECT TOOL FROM AIR SUPPLY BEFORE CHANGING OR INSPECTING ACCESSORIES.** Do not perform service work on tool while connected to an air supply.
12. **IF SUDDEN CHANGE OCCURS** in the feel (vibration level) or sound (pitch) of the unit, the tool should be **IMMEDIATELY TURNED OFF** and the work head inspected for damage. Do not use cracked or chipped wheels, discs, wire brushes, mounted stones etc.
13. **HANDLE THE TOOL SAFELY.** Do not carry the tool with a finger on or near the throttle while the tool is connected to an air supply. Do not carry the air buffer by the hose. Protect the hose from heat and sharp objects.
14. **WHEN NOT IN USE, DISCONNECT TOOL FROM AIR SUPPLY.**
15. **KEEP VISITORS AT A SAFE DISTANCE** and out of line with the tool's work head and work surface.

AIR SUPPLY AND CONNECTIONS

The air buffer is designed to operate at 90 PSI maximum air pressure at the tool when the tool is running. Less pressure prevents the tool from delivering its rated power. Air pressure over 90 PSI at the tool will cause tool to over speed and may result in tool exceeding the accessory strength. The air supply must be water-free; therefore, a drop line or water trap should be used to remove condensation. In addition, an air line lubricator is strongly recommended to insure proper operation and long life of motor parts.



Shown above is the recommended order of filter, regulator, lubricator, line couplers and hose whip. The minimum pipe size to be used is 1/4" and no fitting should be used that has an orifice of less than 7/32" diameter. If a quick disconnect coupler is used, it should not be attached directly at the handle of the air buffer, but spaced off with a hose whip, in order to prevent breakage of fittings.

GENERAL MAINTENANCE

A parts breakdown is shown on the opposite page of this Owner's Manual and details all the parts included in the tool. Refer to this sheet when cleaning, inspecting, or when ordering parts becomes necessary.

ROTOR VANES - Vane life depends upon proper lubrication. Test the tool frequently for proper operation. It is suggested that the tool be inspected on at least an annual basis by an authorized repair station.

LUBRICATION - To ensure proper operation, lubricate motor prior to initial use. If in-line lubricator is not used, add a few drops of oil into air inlet daily. Heavy oils are not recommended. For best results, use St. Louis Pneumatic Air Tool Oil.

LAMP REPLACEMENT - Use the shrink tubing included with the tool to remove lamps. After turning reflector counterclockwise to remove it from the light ring assembly, push one end of the shrink tubing over the glass envelope of the lamp. Pinch the shrink tubing at the opposite end with thumb and forefinger and pull the lamp straight out. Install new lamp by lining up lamp pins with socket holes and pressing straight in.

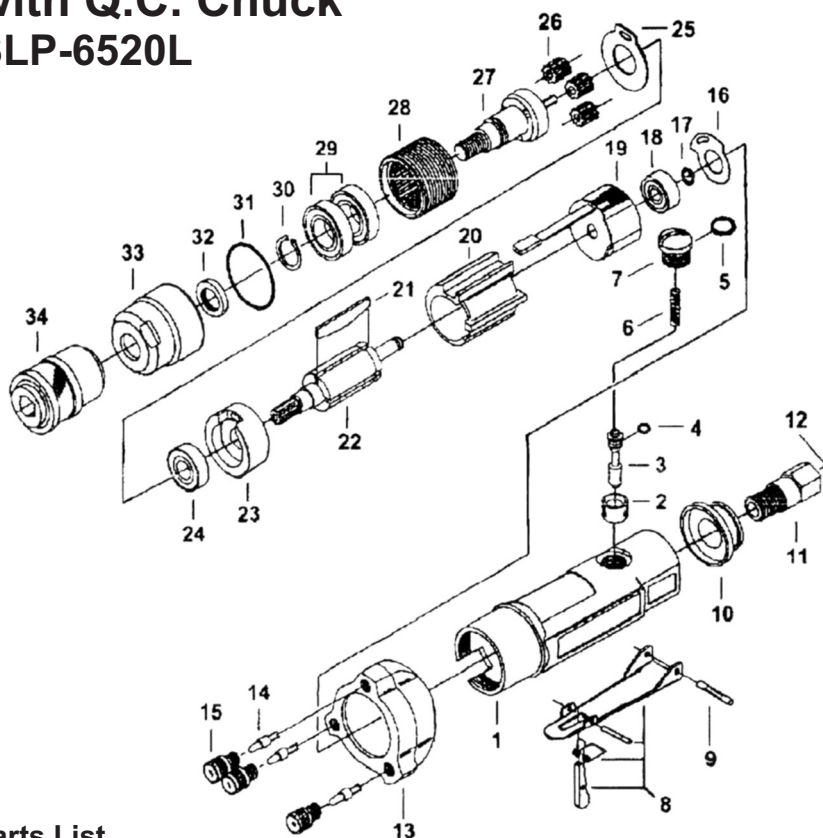
OPERATION

1. **REVIEW SAFETY INSTRUCTIONS.**
2. The tool is started by depressing first the safety toggle lever and then the throttle which is spring loaded. The tool returns to the off position when released.
3. Always wear safety goggles and protective clothing when operating the tool.

OPERATIONAL SPECIFICATIONS

Free Speed	2,500 RPM
Required Air Pressure	90 PSI
Average Air Consumption	3 CFM
Air Inlet Size	1/4" NPT
Hose Size	3/8" ID

Low-Speed Lighted Buffer with Q.C. Chuck SLP-6520L



Parts List

Index No.	Part No.	Description
1.	2004.1	Housing
2.	3069	Trigger Seat
3.	3007	Trigger Stem
4.	4005	O-Ring, Stem
5.	4009	O-Ring, Plug
6.	6023	Trigger Spring
7.	7073	Valve Plug
8.	1105	Throttle Lever Assembly
9.	5015	Rollpin
10.	7072	Exhaust Duct
11.	3016	Hose Adapter
12.	5030	Screen (not shown)
13.	1198.1	Light Ring Assembly
14.	6078	Lamp (3)
15.	1207	Reflector and Lens Assembly (3)
16.	4019	Gasket
17.	6014	Retaining Ring
18.	6002	Ball Bearing
19.	1196	Rear End Plate Assembly
20.	7019	Cylinder
21.	4012	Vane (4)
22.	1202.3	Rotor Assembly
23.	7017	Front End Plate
24.	6003	Ball Bearing
25.	8025	Clamp Washer
26.	3186	Idler Gear (3)
27.	1203.3	Spindle Assembly
28.	3076	Internal Gear
29.	6046	Ball Bearing (2)
30.	6079	Retaining Ring
31.	4015	O-Ring
32.	4013	Seal
33.	3118	Gearcase
34.	1056	Quick Change Chuck

SLP-6520L
9372-7/08Z

LIMITED WARRANTY

St. Louis Pneumatic warrants this tool to be free from defects in materials and workmanship. Tools thought to be defective should be returned to the factory, or an authorized repair station, transportation charges prepaid, for an examination and consequent repair or replacement.

This Warranty does not cover damage to tools arising from normal wear and tear, alteration, abuse or use for other than their intended purpose and does not cover any repairs or replacement made by anyone other than St. Louis Pneumatic or the authorized repair stations.

The duration of this Warranty and any implied Warranty of Merchantability is expressly limited to 1 year on mechanicals and 90 days on electronics (lamps are considered a consumable item and are not covered under warranty) from the date of delivery to the original user. The obligation of St. Louis Pneumatic under this Warranty, express or implied, is limited solely to the repair or replacement, at the factory or authorized repair station, of any part which shall prove defective.

St. Louis Pneumatic further warrants that, during the life of this tool, no repair charge shall exceed \$75.00, excluding freight charges, when the tool is returned to the St. Louis Pneumatic factory for repair.

These Warranties are void unless the Warranty Registration Card is completed and returned to St. Louis Pneumatic within ten (10) days after the date of delivery to the user.

ST. LOUIS PNEUMATIC

1450 W. Lark Industrial Drive
Fenton, Missouri 63026
(800) 272-6510 • Fax (636) 376-0595
Email: contact@stlouispneumatic.com
www.stlpneumatic.com