

- Operating Instructions
- Warning Information
- Parts Breakdown



! WARNING

Some dust created by power sanding, sawing, grinding, drilling, and other construction activities contains chemicals known to cause cancer, birth defects or other reproductive harm. Some examples of these chemicals are:

- lead from lead-based paints,
- crystalline silica from bricks and cement and other masonry products, and
- arsenic and chromium from chemically-treated lumber.

Your risk from these exposures varies, depending on how often you do this type of work. To reduce your exposure to these chemicals: work in a well ventilated area, and work with approved safety equipment, such as those dust masks that are specially designed to filter out microscopic particles.



! WARNING



**ALWAYS READ
INSTRUCTIONS
BEFORE USING
POWER TOOLS**



**ALWAYS WEAR
SAFETY GOGGLES**



**WEAR HEARING
PROTECTION**



**AVOID
PROLONGED
EXPOSURE TO
VIBRATION**

SPECIFICATIONS

Motor: 710 W
Input Current: 6.2A
Input: 120V, 60Hz
No Load Speed: 11,500 RPM

RL4120
**4-1/2" Electric
Grinder**

WARNING - READ AND UNDERSTAND ALL INSTRUCTIONS!

FAILURE TO FOLLOW ALL INSTRUCTIONS LISTED BELOW MAY RESULT IN ELECTRIC SHOCK, FIRE AND/OR SERIOUS PERSONAL INJURY

SAVE THESE INSTRUCTIONS



This instruction manual contains important safety information.

READ THIS INSTRUCTION MANUAL CAREFULLY AND UNDERSTAND ALL INFORMATION BEFORE OPERATING THIS TOOL.

WORK AREA

- Keep your work area clean and well lit. Cluttered benches and dark areas invite accidents. Do not operate power tools in explosive atmospheres, such as in the presence of flammable liquids, gases or dust. Power tools create sparks which may ignite the dust or fumes.
- Keep bystanders, children, and visitors away while operating power tool. Distractions can cause you to lose control.



ELECTRICAL SAFETY

- Double insulated tools are equipped with a polarized plug (one blade is wider than the other). This plug will fit in a polarized outlet only one way. If the plug does not fit fully in the outlet, reverse the plug. If it still does not fit, contact a qualified electrician to install a polarized outlet. Do not change the plug in any way. Double insulation eliminates the need for the three wire grounded power cord and grounded power supply system.
- Avoid body contact with grounded surfaces such as pipes, radiators, ranges and refrigerators. There is an increased risk of electric shock if your body is grounded.
- Don't expose power tools to rain or wet conditions. Water entering a power tool will increase the risk of electric shock.
- Do not abuse the cord. Never use the cord to carry the tools or pull the plug from an outlet. Keep cord away from heat, oil, sharp edges or moving parts. Replace damaged cords immediately. Damaged cords increase the risk of electric shock.

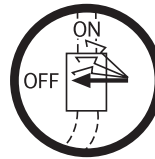
- When operating a power tool outside, use an outdoor extension cord marked "W-A" or "W". These cords are rated for outdoor use and reduce the risk of electric shock.

PERSONAL SAFETY

- Stay alert, watch what you are doing and use common sense when operating a power tool. Do not use tools while tired or under the influence of drugs, alcohol, or medication. A moment of inattention while operating power tools may result in serious personal injury.



- Dress properly. Do not wear loose clothing or jewelry. Contain long hair. Keep your hair, clothing, and gloves away from moving parts. Loose clothes, jewelry, or long hair can be caught in moving parts.



- Avoid accidental starting. Be sure switch is off before plugging in. Carrying tools with your finger on the switch or plugging in tools that have the switch on invites accidents.



Remove adjusting keys or switches before turning the tool on. A wrench or a key that is left attached to a rotating part or the tool may result in personal injury.



- Do not overreach. Keep proper footing and balance at all times. Proper footing and balance enables better control of the tool in unexpected situations.



- Use safety equipment. Always wear eye protection. Dust mask, non-skid safety shoes, hard hat, or hearing protection must be used for appropriate conditions.

TOOL USE AND CARE

- Use clamps or other practical way to secure and support the workpiece to a stable platform. Holding the work by hand or against your body is unstable and may lead to loss of control.
- Do not force tool. Use the correct tool for your applications. The correct tools will do the job better and safer at the rate for which it is designed.
- Do not use tool if switch does not turn it on or off. Any tool that cannot be controlled with the switch is dangerous and must be repaired.
- Disconnect the plug from the power source before making any adjustments, changing accessories, or storing the tool. Such preventive safety measures reduce the risk of starting the tool accidentally.
- Store idle tools out of reach of children and other untrained persons. Tools are dangerous in the hands of untrained users.

Maintain tools with care. Keep cutting tools sharp and clean. Properly maintained tools, with sharp cutting edges are less likely to bind and are easier to control.

Check for misalignment of binding or binding or moving parts, breakage of parts, and any other condition that may effect the tool's operation. If damaged, have the tool serviced before using. Many accidents are caused by poorly maintained tools.

Use only accessories that are recommended by the manufacturer for your model. Accessories that may be suitable for one tool, may become hazardous when used on another tool.

SERVICE

Tool service must be performed only by qualified repair personnel. Service or maintenance performed by unqualified personnel could result in a risk of injury.

When servicing a tool, use only identical replacement parts. Follow instruction in the Maintenance section of this manual. Use of unauthorized parts or failure to follow Maintenance instructions may create a risk of electric shock or injury.

SPECIFIC SAFETY RULES

Always use proper guard with grinding wheel. A guard protects operator from broken wheel.

Accessories must be rated for at least the speed recommended on the tool warning label. Wheels and other accessories running over rated speed can fly apart and cause injury.

Hold tool by insulated gripping surfaces when performing an operation where the cutting tool may contact hidden wiring or its own cord. Contact with a "live" wire will make exposed metal parts of the tool "live" and shock the operator.

OPERATION

1. Preparing your grinder

To prepare your grinder proceed as follows:
Disconnect the plug from the electricity supply.
Fit the appropriate disc to the grinder

2. Operating your sander

To switch your sander on, press the switch marked "1".
To switch your sander off, press the switch marked "0".

MAINTENANCE

1. The brushes should be checked periodically and worn out brushes should be replaced in time by a qualified serviceman.
2. Keep the vent passage clear from dirt, clean off the accumulated dust and oil dirt periodically.
3. During normal operation, if anything happens, the power supply should be cut off at once and the tool should be checked and repaired.

CAUTION: Only a qualified serviceman can repair the tool.

WARRANTY

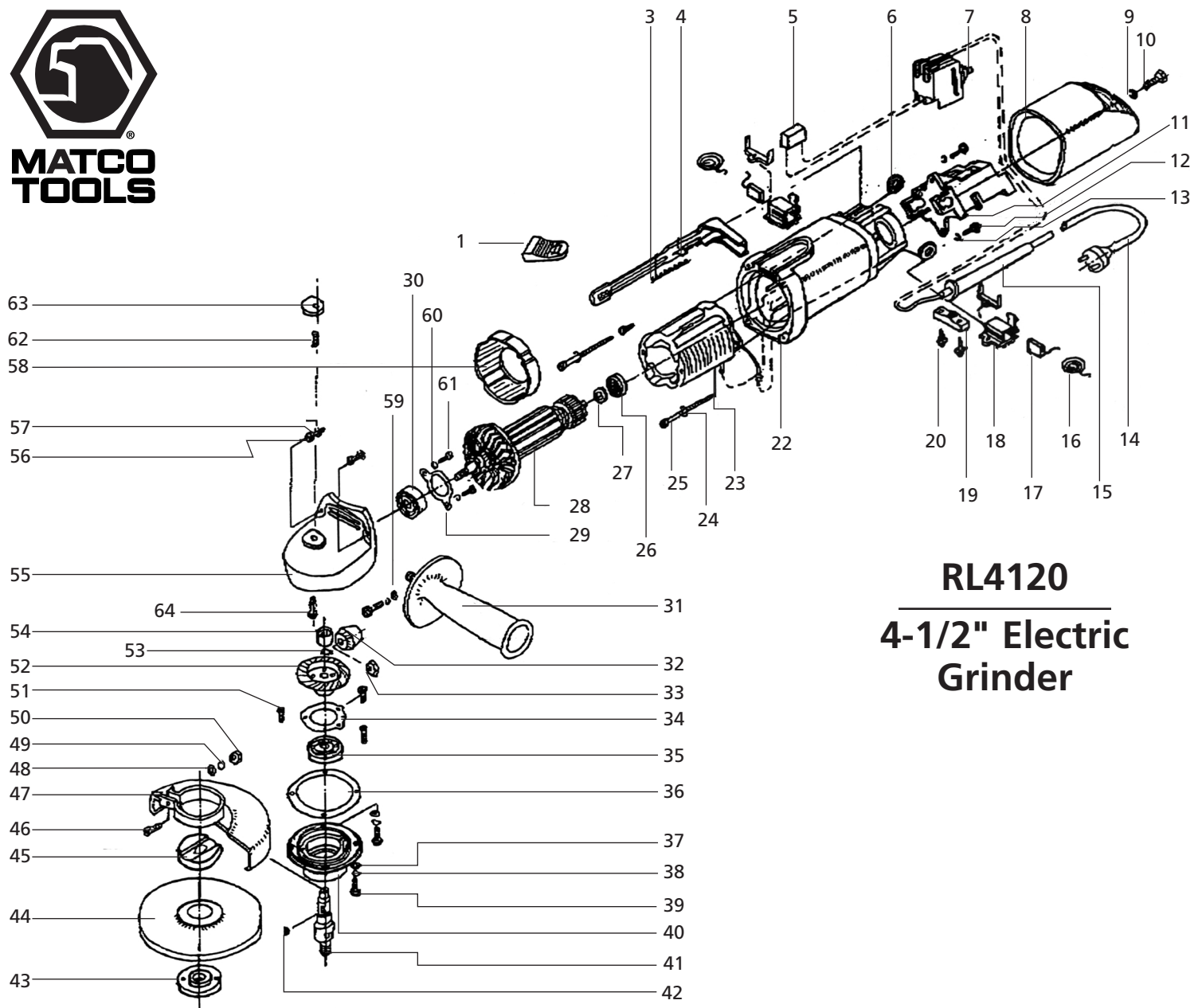
Matco warrants its electric tools for a period of 1 year to the consumer. We will repair any electric tool covered under this warranty which proves to be defective in material or workmanship during the warranty period. In order to have your tool repaired, return the tool to any Matco Authorized Electric Warranty Center, freight prepaid. Please include a copy of your proof of purchase and a brief description of the problem. The tool will be inspected and if any part or parts are found to be defective in material or workmanship, they will be repaired free of charge and the repaired tool will be returned to you freight prepaid.

This warranty does not apply to normal wear and tear, nor does it cover any damage caused by careless or unsafe handling, alterations, accidents, misuse, or repair attempts by anyone other than an authorized warranty center.

This warranty gives you specific rights. You may also have other rights which vary from state to state.

The foregoing obligation is Matco's sole liability under this or any implied warranty and under no circumstances shall Matco be liable for any incidental or consequential damages.

Note: Some states do not allow the exclusion or limitation of incidental or consequential damages so the above limitation or exclusion may not apply to you.



RL4120 4-1/2" Electric Grinder

Ref. No.	Part No.	Description
1	412001	Switch Knob
3	412003	Spring
4	412004	Slide Bar
5	412005	Electric Capacity
6	412006	Blade
7	412007	Switch
8	412008	Back Cover
9	412009	Spring Washer
10	412010	Tapping Screw
11	412011	Switch Holder
12	412012	Tapping Screw
13	412013	Spring Washer
14	412014	Cord Sets
15	412015	Cord Armor
16	412016	Brush Cap
17	412017	Carbon Brush
18	412018	Brush Holder
19	412019	Cord Clip
20	412020	Screw
22	412022	Frame
23	412023	Stator

Ref. No.	Part No.	Description
24	412024	Tapping Screw
25	412025	Spring Washer
26	412026	Ball Bearing
27	412027	Stop Plate
28	412028	Armature
29	412029	Bearing Cover
30	412030	Ball Bearing
31	412031	Handle
32	412032	Bevel Gear
33	412033	Hex Nut
34	412034	Bearing Cover
35	412035	Ball Bearing
36	412036	Spacer Shim
37	412037	Plain Washer
38	412038	Spring Washer
39	412039	Tapping Screw
40	412040	End Cover
41	412041	Spindle
42	412042	Key
43	412043	Wheel Nut
44	RL4120GW	Abrasive Disc (pk. of 2)

Ref. No.	Part No.	Description
45	412045	Wheel Flange
46	412046	Screw
47	412047	Dust Cover
48	412048	Plain Washer
49	412049	Spring Washer
50	412050	Hex Nut
51	412051	Screw
52	412052	Bevel Gear
53	412053	Washer For Shaft
54	412054	Needle Bearing
55	412055	Driver Gear Box
56	412056	Tapping Screw
57	412057	Spring Washer
58	412058	Dust Cover
59	412059	Plain Washer
60	412060	Spring Washer
61	412061	Tapping Screw
62	412062	Spring
63	412063	Bottom
64	412064	Pin