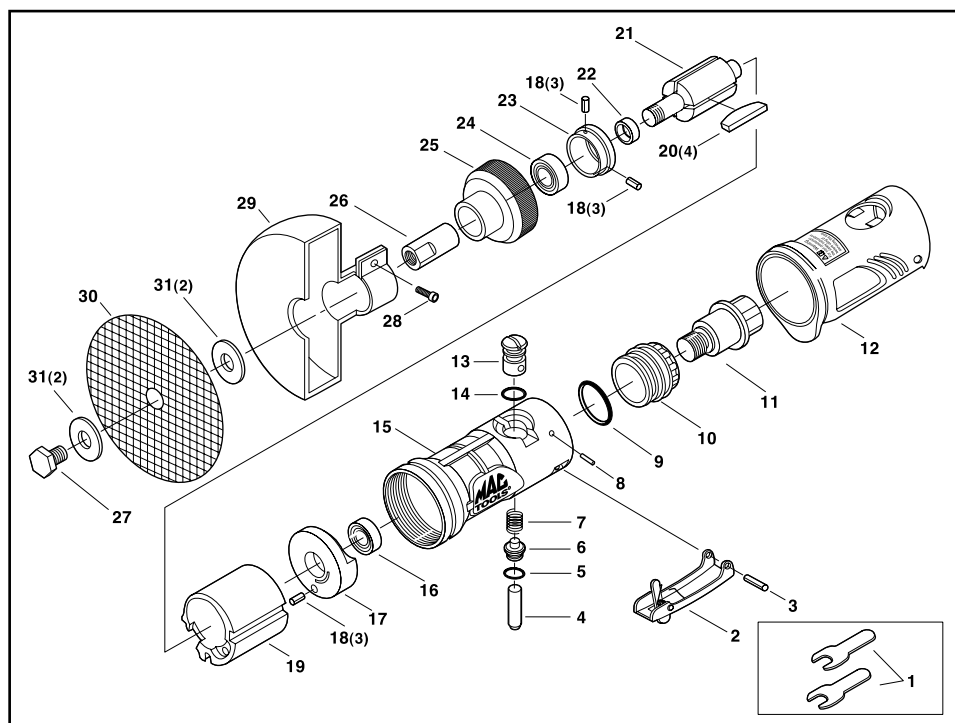


CUT-OFF TOOL

Model #AT 28



PARTS LIST:

| Fig. | Parts No. | Description |
|------|------------|-----------------------------|
| 1 | AT28-01 | Spanner Wrench Set |
| 2 | AG50-29 | Safety Lever |
| 3 | AW156TR-46 | Spring Pin |
| 4 | AR133-10 | Valve Shaft |
| 5 | AR133-09 | O-Ring |
| 6 | AR133-08 | Throttle Valve |
| 7 | AR133-07 | Valve Spring |
| 8 | AD510AH-22 | Spring Pin |
| 9 | AG70-09 | O-Ring |
| 10 | AG70-10 | Exhaust Sleeve |
| 11 | AG60-27 | Inlet Bushing |
| 12 | AG70-12 | Housing Cover |
| 13 | AG60-17 | Air Regulator |
| 14 | AR134-10 | O-Ring |
| 15 | AG70-15 | Motor Housing |
| 16 | ADG210-11 | Ball Bearing |
| 17 | AG70-17 | Rear End Plate |
| 18 | AR760-14 | Spring Pin (3) |
| 19 | AG70-19 | Cylinder |
| 20 | AG70-20 | Rotor Blade (4) |
| 21 | AG70-21 | Rotor |
| 22 | ADG210-17 | Bearing Spacer |
| 23 | AG70-23 | Front End Plate |
| 24 | ADG210-20 | Ball Bearing |
| 25 | AT28-25 | Lock Ring |
| 26 | AT28-26 | Spindle |
| 27 | AMT206-21 | Hex.Bolt |
| 28 | AW136-52 | Cap Screw |
| 29 | AMT206-19 | Wheel Cover |
| 30 | | Cutting Wheel (See Catalog) |
| 31 | AMT206-20 | Wheel Washer (2) |

SAFETY INSTRUCTIONS

1. READ ALL INSTRUCTIONS CAREFULLY before operating tool.
2. BEFORE MOUNTING ACCESSORIES and before placing the tool in service, check the free running spindle speed with 90 PSI at tool inlet.
The tool's speed should be checked after every 50 hours of usage.
3. ALWAYS WEAR EYE PROTECTION. Use a dust mask if the operation creates dust. Caution is the key safety .
4. PROTECT YOURSELF FROM NOISE. Noise levels vary with work surface.
If noise level is high, wear ear protectors.
5. WEAR GLOVES AND PROTECTIVE CLOTHING to avoid injuries caused by chips or pieces, malfunctioning attachments, or improperly clamped work.
6. NEVER USE THE TOOL AT AIR PRESSURE ABOVE 90 PSI AT TOOL INLET. THIS IS AN UNGOVERNED TOOL AND ITS FREE SPEED WILL INCREASE IN PROPORTION TO ANY INCREASE IN AIR PRESSURE ABOVE 90 PSI. Control air pressure with a reliable automatic air regulator. Periodically, monitor air pressure at tool's air inlet while it is running free speed.
7. USE ONLY ASSESSORIES with an R.P.M.(speed) rating AT or ABOVE the ACTUAL free speed of the tool. (SEE "OPERATING SPECIFICATIONS" for free speed RPM of your tool.)
8. DISCONNECT TOOL FROM AIR SUPPLY BEFORE CHANGING OR INSPECTING ACCESSORIES. Do not perform service work on tool while connected to an air supply.
9. IF A SUDDEN CHANGE OCCURS in the feel (vibration level) or sound (pitch) of the unit, the tool should be IMMEDIATELY TURNED OFF and the work head inspected for damage. Do not use cracked or chipped ACCESSORIES.
10. HANDLE THE TOOL SAFETY. Do not carry the tool with a finger on or near the throttle or trigger while the tool is connected to an air supply . Do not carry the tool by the hose. Protect the hose from heat and sharp objects.
11. WHEN NOT IN USE, DISCONNECT TOOL FROM AIR SUPPLY to prevent accidental or unauthorized use in the absence of the operator.
12. KEEP VISITORS AT A SAFE DISTANCE and out of line with the tool's work head and work surface.
13. DO NOT ALTER ANY PART OR COMPONENT OF THIS TOOL IN ANY WAY, SHAPE OR FORM.
14. DO NOT OPERATE THIS TOOL without the safety wheel guard in place.