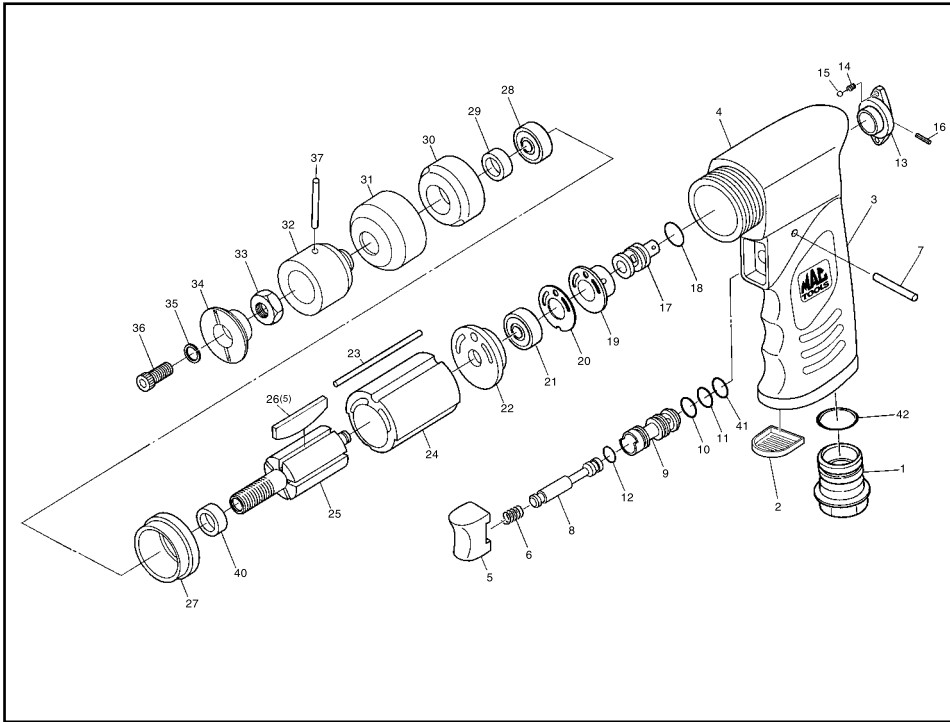


REVERSIBLE HIGH SPEED AIR SANDER

Model #AS 15R



PARTS LIST:

Fig.	Parts No.	Description
1	AD901-01	Inlet Bushing
2	AW435-41	Deflector
3	AD901-03	Handle Cover
4	AD901-04	Motor Housing
5	AD527-25	Trigger
6	AD901-06	Valve Spring
7	AN213-03	Spring Pin
8	AD901-08	Valve Shaft
9	AD901-09	Valve Bushing
10	AW156TR-51	O-Ring
11	AW148TR-39	O-Ring
12	AR-133-09	Throttle Valve O-Ring
13	AD901-13	Reverse Valve Knob
14	AW226-06	Regulator Spring
15	AW148TR-27	Steel Ball
16	AD901-16	Spring Pin
17	AD901-17	Reverse Valve
18	AD901-18	O-Ring
19	AD901-19	Reverse Valve Case
20	AD901-20	Gasket
21	AR133-11	Ball Bearing
22	AD901-22	Rear End Plate
23	AS15R-23	Dowel Pin
24	AD901-24	Cylinder
25	AS15R-25	Rotor
26	AG70-20	Rotor Blade(5)
27	AG70-23	Front End Plate
28	ADG210-20	Ball Bearing
29	AS15R-29	Collar
30	AS15R-30	Spacer
31	AG70-25	Lock Ring
32	AS15R-32	Disc Holder
33	AS15R-33	Hex.Nut
34	AS15R-34	Disc Nut
35	AW145-046	Spring Washer
36	AS15R-36	Cap Screw
37	AS15R-37	Rod
38	AS15R-38	Backing Pad Small(Not Shown)
39	AS15R-39	Backing Pad Large(Not Shown)
40	ADG210-17	Rotor Collar
41	AW375-17	O-Ring
42	AD901-42	O-Ring



REVERSIBLE HIGH SPEED AIR SANDER

Model #AS 15R

SAFETY INSTRUCTION

1. READ ALL INSTRUCTIONS CAREFULLY before operating tool.
2. BEFORE MOUNTING ACCESSORIES and before placing the tool in service, check the free running spindle speed with 90 PSI at tool inlet. The tool's speed should be checked after every 50 hours of usage.
3. ALWAYS WEAR EYE PROTECTION. Use a dust mask if the operation creates dust. Caution is the key to safety.
4. PROTECT YOURSELF FROM NOISE. Noise levels vary with work surface. If noise level is high, wear ear protectors.
5. WEAR GLOVES AND PROTECTIVE CLOTHING to avoid injuries caused by chips or pieces, malfunctioning attachments, or improperly clamped work.
6. NEVER USE THE TOOL AT AIR PRESSURE ABOVE 90 PSI AT TOOL INLET. THIS IS AN UNGOVERNED TOOL AND ITS FREE SPEED WILL INCREASE IN PROPORTION TO ANY INCREASE IN AIR PRESSURE ABOVE 90 PSI. Control air pressure with a reliable automatic air regulator. Periodically, monitor air pressure at tool's air inlet while it is running free speed.
7. USE ONLY ACCESSORIES with an R.P.M.(speed) rating AT or ABOVE the ACTUAL free speed of the tool. (SEE "OPERATING SPECIFICATIONS" for free speed RPM of you tool.)
8. DISCONNECT TOOL FROM AIR SUPPLY BEFORE CHANGING OR INSPECTING ACCESSORIES. Do not perform service work on tool while connected to an air supply.
9. IF A SUDDEN CHANGE OCCURS in the feel (vibration level) or sound (pitch) of the unit, the tool should be IMMEDIATELY TURNED OFF and the work head inspected for damage. Do not use cracked or chipped ACCESSORIES.
10. HANDLE THE TOOL SAFELY. Do not carry the tool with a finger on or near the throttle or trigger while the tool is connected to an air supply. Do not carry the tool by the hose. Protect the hose from heat and sharp objects.
11. WHEN NOT IN USE, DISCONNECT TOOL FROM AIR SUPPLY to prevent accidental or unauthorized use in the absence of the operator.
12. KEEP VISITORS AT A SAFE DISTANCE and out of line with the tool's work head and work surface.
13. DO NOT ALTER ANY PART OR COMPONENT OF THIS TOOL IN ANY WAY, SHAPE OR FORM.
14. THE USE OF ACCESSORIES NOT RATED FOR THIS TOOL, IMPROPER USE OF TOOL OR NON-COMPLIANCE WITH SAFETY INSTRUCTIONS, CAN RESULT IN SERIOUS INJURY OR DEATH.

Owner's Manual