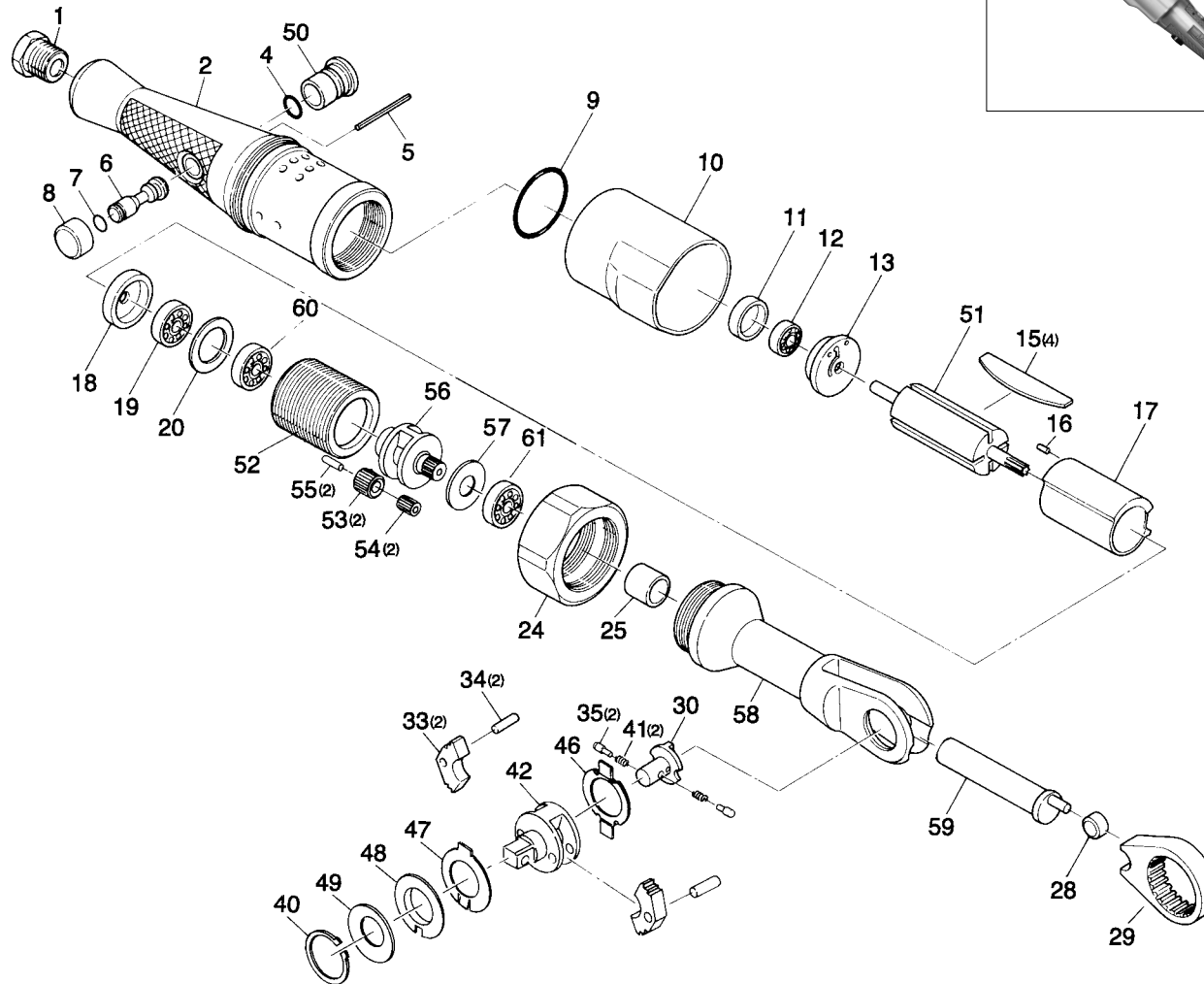


AR 747 3/8 " DOUBLE PAWL RATCHET WRENCH



EXPLODED VIEW



ANVIL KIT AR747-AK

Incl: Index No's 30, 33(2), 34(2), 35(2), 40, 41(2), 42, 46, 47, 48, 49

"WARNING"

1. Wear safety goggles when using this tool.
2. Use only impact sockets in good condition.
3. Operate before engaging bolts or nuts to assure direction of rotation is correct.
4. Disconnect tool when not in use.

INDEX	PART NO.	DESCRIPTION	QTY.
1	AR134-01	Inlet Bushing	1
2	AR747-02	Motor Housing	1
4	AD527-30	O-Ring	1
5	AR747-05	Roll Pin	1
6	AR747-06	Throttle Valve	1
7	AR134-08	O-Ring	1
8	AR747-08	Throttle Button	1
9	AR747-09	O-Ring	1
10	AR747-10	Exhaust Cover	1
11	AR133-48	Bearing Cap	1
12	AR133-11	Ball Bearing	1
13	AR747-13	Rear End Plate	1
15	AR747-15	Rotor Blade	4
16	AR760-14	Dowel Pin	1
17	ADG-210-14	Cylinder	1
18	AR747-18	Front End Plate	1
19	ADG200-20	Ball Bearing	1
20	AR133-20	Internal Gear Spacer	1
24	AR747-24	Clamp Nut	1
25	AR134-31	Needle Bearing	1
28	AR133-33	Drive Bushing	1
29	AR133-34	Ratchet Yoke	1
30	AR747-30	Reverse Button	1
33	AR133-40	Ratchet Pawl	2
34	AR133-31	Ratchet Pawl Pin	2
35	AR133-39	Lock Pin	2
40	AR133-45	Anvil Retaining Ring	1
41	AR2134-40	Ratchet Spring	2
42	AR2134-42	Ratchet Anvil	1
46	AR747-46	Wear Washer	1
47	AR747-47	Washer A	1
48	AR747-48	Washer B	1
49	AR747-49	Spring Washer	1
50	AR747-50	Plug	1
51	AR747-51	Rotor	1
52	AR133-22	Internal Gear	1
53	AR134-26	Planet Gear	2
54	AR134-27	Needle Roller	22
55	AR134-25	Planet Gear Pin	2
56	AR134-23	Planet Cage	1
57	AR134-26	Spacer	1
58	AR747-58	Ratchet Housing	1
59	AR133-32	Crank Shaft	1
60	AR133-21	Ball Bearing	1
61	ADG200-20	Ball Bearing	1

The types and specifications may be changed with or without notice.
0003