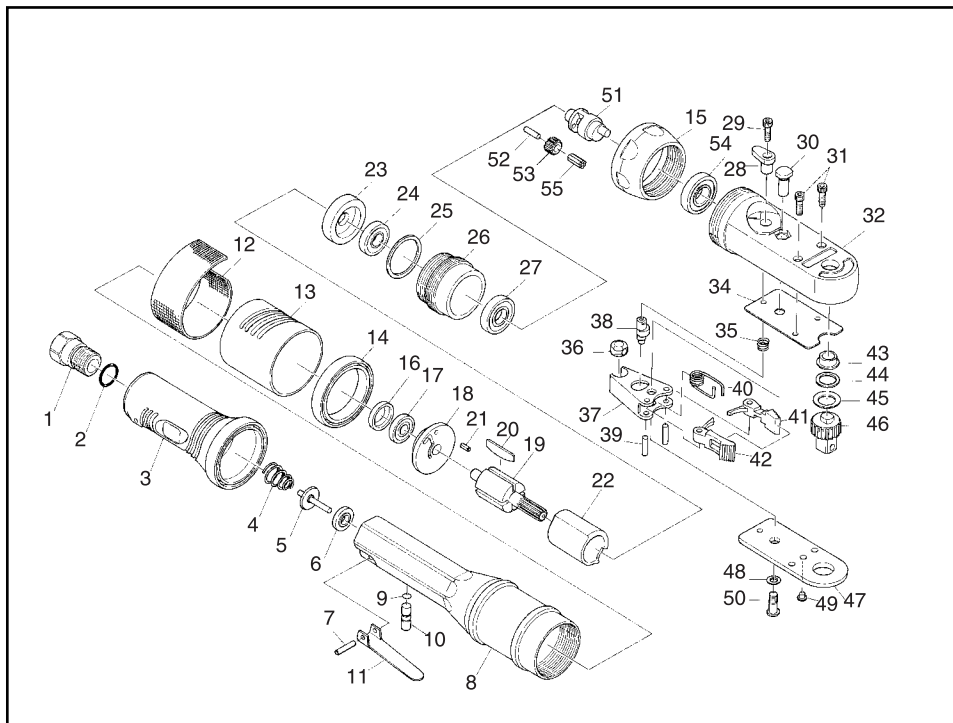


# 3/8" SQ. DRIVE RATCHET WRENCH

Model #AR 1776



## PARTS LIST:

Fig.	Parts No.	Description
1	AW376-55	Inlet Bushing
2	AD527-32	O-Ring
3	AR1776-3	Handle Cover
4	AR1776-4	Valve Spring
5	AW375-15	Valve
6	AW375-14	Valve Seat
7	AR1776-7	Spring Pin
8	AR1776-8	Motor Housing
9	AW145-008	Push Pin O-Ring
10	AR1776-10	Valve Shaft
11	AR1776-11	Throttle Lever
12	AR1776-12	Exhaust Screen
13	AR1776-13	Exhaust Cover
14	AR1776-14	Band
15	AR1776-15	Clamp Nut
16	AR133-48	Bearing Cap
17	ADG210-11	Ball Bearing
18	AR1776-18	Rear End Plate
19	AR747-51	Rotor
20	AD527-20	Rotor Blade(4)
21	AS717-19	Spring Pin
22	ADG210-14	Cylinder
23	AR747-18	Front End Plate
24	ADG200-20	Ball Bearing
25	AR133-20	Internal Gear Spacer
26	AR1776-26	Internal Gear
27	AR133-21	Ball Bearing
28	AR1776-28	Reverse Switch
29	AR1776-29	Torx Head Screw
30	AR1776-30	Pivot Post
31	AR1776-31	Soc. Head Screw(2)
32	AR1776-32	Steel Housing
34	AR1776-34	Wear Plate
35	AR1776-35	Spring
36	AR1776-36	Drive Bushing
37	AR1776-37	Drive Link
38	AR1776-38	Reverse Cam
39	AR1776-39	Dowel Pin(2)
40	AR1776-40	Torsion Spring
41	AR1776-41	Pawl(Single)
42	AR1776-42	Pawl(Dowble)
43	AR1776-43	Bushing
44	AR1776-44	Friction Washer
45	AR1776-45	Belleville Washer
46	AR1776-46	Square Drive Ass'y
47	AR1776-47	Cover Plate
48	AR1776-48	Washer
49	AR1776-49	Grease Fitting
50	AR1776-50	Button Head Screw
51	AR1776-51	Planet Carrier
52	AR133-25	Planet Gear Pin(2)
53	AR134-26	Planet Gear(2)
54	AR1776-54	Ball Bearing
55	AR134-27	Needle Roller(22)



# 3/8" SQ. DRIVE RATCHET WRENCH

Model #AR 1776

## SAFETY INSTRUCTION

1. READ ALL INSTRUCTIONS CAREFULLY before operating your air ratchet.
2. ALWAYS WEAR EYE PROTECTION. Use a dust mask if the operation creates dust. Caution is the key to safety.
3. PROTECT YOURSELF FROM NOISE. Noise levels vary with work surface. If noise level from buffing is high, wear ear protectors.
4. WEAR GLOVES AND PROTECTIVE CLOTHING to avoid injuries caused by chips or pieces, malfunctioning attachments, or improperly clamped work.
5. NEVER USE THE RATCHET AT AIR ITS' FREE SPEED WILL INCREASE IN PROPORTION TO ANY INCREASE IN AIR PRESSURE ABOVE 90 PSI. Control air pressure with a reliable automatic air regulator. Periodically monitor air pressure at tool's air inlet while tool is running free speed.
6. USE ONLY IMPACT SOCKETS AND ACCESSORIES ON THIS TOOL.
7. DISCONNECT TOOL FROM AIR SUPPLY BEFORE CHANGING ANY ACCESSORY ON THIS TOOL. Do not perform service work on tool while connected to an air supply.
8. IF A SUDDEN CHANGE OCCURS in the feel (vibration level) or sound (pitch) of the unit, the tool should be IMMEDIATELY TURNED OFF and the work head inspected for damage.
9. HANDLE THE TOOL SAFELY. Do not carry the tool with a finger on or near the throttle or trigger while the tool is connected to an air supply. Do not carry the drill by the hose. Protect the hose from heat and sharp objects.
10. WHEN NOT IN USE, DISCONNECT TOOL FROM AIR SUPPLY to prevent accidental or unauthorized use in the absence of the operator.
11. KEEP VISITORS AT A SAFE DISTANCE and out of line with the tool's work head and work surface.
12. DO NOT ALTER ANY PART OR COMPONENT OF THIS TOOL IN ANY WAY, SHAPE OR FORM.

**Owner's Manual**