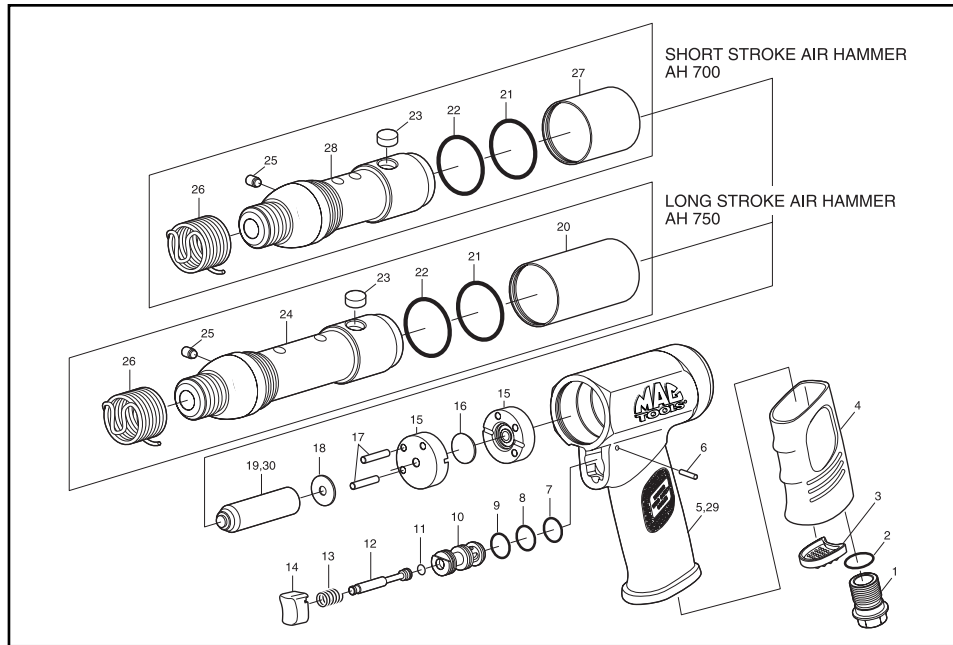


AIR HAMMER

Model #AH 700 & AH 750



PARTS LIST:

Fig.	Parts No.	Description	AH 700	SHORT STROKE AIR HAMMER
1	AH750-01	Inlet Bushing		
2	AH750-02	O-Ring	27	AH700-27 Cylinder Sleeve
3	AH750-03	Deflector	28	AH700-28 Cylinder (Short Type)
4	AH750-04	Handle Cover	29	AH700-29 Housing Body
5	AH750-05	Housing Body	30	AH700-30 Piston
6	AH750-06	Spring Pin		
7	AH750-07	O-Ring		
8	AH750-08	O-Ring		
9	AH750-09	O-Ring		
10	AH750-10	Valve Bushing		
11	AH750-11	O-Ring		
12	AH750-12	Valve Shaft		
13	AH750-13	Valve Spring		
14	AH750-14	Trigger		
15	AH750-15	Valve Body (2)		
16	AH750-16	Valve		
17	AH750-17	Spring Pin (2)		
18	AH750-18	Cylinder Washer		
19	AH750-19	Piston		
20	AH750-20	Cylinder Sleeve		
21	AH750-21	O-Ring		
22	AH750-22	O-Ring		
23	AH750-23	Cylinder Lock Plug (2)		
24	AH750-24	Cylinder (Long Type)		
25	AH750-25	Plug		
26	AH750-26	Quick Change Retainer		



AIR HAMMER

Model #AH 700 & AH 750

SAFETY INSTRUCTION

1. READ ALL INSTRUCTIONS CAREFULLY before operating tool.
2. BEFORE MOUNTING ACCESSORIES and before placing the tool in service, check the free running spindle speed with 90 PSI at tool inlet. The tool's speed should be checked after every 50 hours of usage.
3. ALWAYS WEAR EYE PROTECTION. Use a dust mask if the operation creates dust. Caution is the key to safety.
4. PROTECT YOURSELF FROM NOISE. Noise levels vary with work surface. If noise level is high, wear ear protectors.
5. WEAR GLOVES AND PROTECTIVE CLOTHING to avoid injuries caused by chips or pieces, malfunctioning attachments, or improperly clamped work.
6. NEVER USE THE TOOL AT AIR PRESSURE ABOVE 90 PSI AT TOOL INLET. THIS IS AN UNGOVERNED TOOL AND ITS FREE SPEED WILL INCREASE IN PROPORTION TO ANY INCREASE IN AIR PRESSURE ABOVE 90 PSI. Control air pressure with a reliable automatic air regulator. Periodically, monitor air pressure at tool's air inlet while it is running free speed.
7. USE ONLY ACCESSORIES with an R.P.M.(speed) rating AT or ABOVE the ACTUAL free speed of the tool. (SEE "OPERATING SPECIFICATIONS" for free speed RPM of you tool.)
8. DISCONNECT TOOL FROM AIR SUPPLY BEFORE CHANGING OR INSPECTING ACCESSORIES. Do not perform service work on tool while connected to an air supply.
9. IF A SUDDEN CHANGE OCCURS in the feel (vibration level) or sound (pitch) of the unit, the tool should be IMMEDIATELY TURNED OFF and the work head inspected for damage. Do not use cracked or chipped ACCESSORIES.
10. HANDLE THE TOOL SAFELY. Do not carry the tool with a finger on or near the throttle or trigger while the tool is connected to an air supply. Do not carry the tool by the hose. Protect the hose from heat and sharp objects.
11. WHEN NOT IN USE, DISCONNECT TOOL FROM AIR SUPPLY to prevent accidental or unauthorized use in the absence of the operator.
12. KEEP VISITORS AT A SAFE DISTANCE and out of line with the tool's work head and work surface.
13. DO NOT ALTER ANY PART OR COMPONENT OF THIS TOOL IN ANY WAY, SHAPE OR FORM.

Owner's Manual