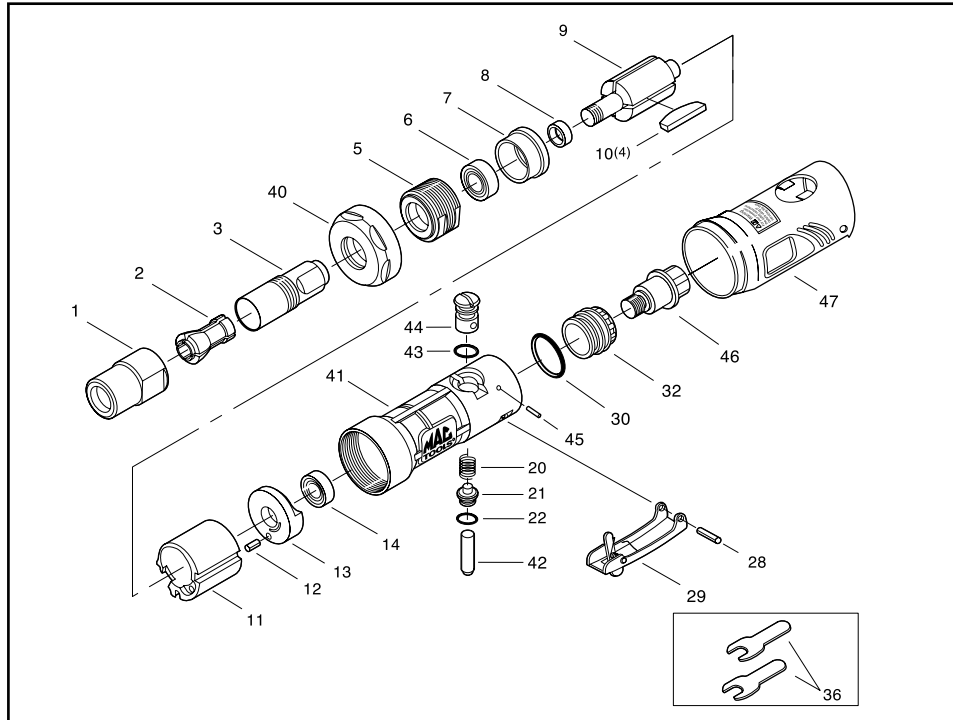


1/4" CAP. AIR DIE GRINDER

Model #AG 50



1/4" CAP. AIR DIE GRINDER

Model #AG 50

SAFETY INSTRUCTIONS

1. READ ALL INSTRUCTIONS CAREFULLY before operating tool.
2. BEFORE MOUNTING ACCESSORIES and before placing the tool in service, check the free running spindle speed with 90 PSI at tool inlet. The tool's speed should be checked after every 50 hours of usage.
3. ALWAYS WEAR EYE PROTECTION. Use a dust mask if the operation creates dust. Caution is the key safety .
4. PROTECT YOURSELF FROM NOISE. Noise levels vary with work surface. If noise level is high, wear ear protectors.
5. WEAR GLOVES AND PROTECTIVE CLOTHING to avoid injuries caused by chips or pieces, malfunctioning attachments, or improperly clamped work.
6. NEVER USE THE TOOL AT AIR PRESSURE ABOVE 90 PSI AT TOOL INLET. THIS IS AN UNGOVERNED TOOL AND ITS FREE SPEED WILL INCREASE IN PROPORTION TO ANY INCREASE IN AIR PRESSURE ABOVE 90 PSI. Control air pressure with a reliable automatic air regulator. Periodically, monitor air pressure at tool's air inlet while it is running free speed.
7. USE ONLY ASSESSORIES with an R.P.M.(speed) rating AT or ABOVE the ACTUAL free speed of the tool. (SEE "OPERATING SPECIFICATIONS" for free speed RPM of your tool.)
8. DISCONNECT TOOL FROM AIR SUPPLY BEFORE CHANGING OR INSPECTING ACCESSORIES. Do not perform service work on tool while connected to an air supply.
9. IF A SUDDEN CHANGE OCCURS in the feel (vibration level) or sound (pitch) of the unit, the tool should be IMMEDIATELY TURNED OFF and the work head inspected for damage. Do not use cracked or chipped ACCESSORIES.
10. HANDLE THE TOOL SAFETY. Do not carry the tool with a finger on or near the throttle or trigger while the tool is connected to an air supply. Do not carry the tool by the hose. Protect the hose from heat and sharp objects.
11. WHEN NOT IN USE, DISCONNECT TOOL FROM AIR SUPPLY to prevent accidental or unauthorized use in the absence of the operator.
12. KEEP VISITORS AT A SAFE DISTANCE and out of line with the tool's work head and work surface.
13. DO NOT ALTER ANY PART OR COMPONENT OF THIS TOOL IN ANY WAY, SHAPE OR FORM.

PARTS LIST:

Fig.	Parts No.	Description			
1	ADG200-25	Collet Nut	43	AR760-03	O-Ring
2	ADG200-24	1/4 Collet	44	AG50-44	Air Regulator
3	ADG200-21	Spindle	45	ADG205-02	Spring Pin
5	AG50-05	Lock Ring	46	AG50-46	Inlet Bushing
6	ADG200-20	Ball Bearing	47	AG50-47	Housing Cover
7	AG50-07	Front End Plate			
8	ADG200-17	Bearing Spacer			
9	AG50-09	Rotor			
10	AR250-19	Rotor Blade (4)			
11	AR250-21	Cylinder			
12	AR2760C-13	Spring Pin			
13	AG50-13	Rear End Plate			
14	AR760-12	Ball Bearing			
20	AR133-07	Valve Spring			
21	AR133-08	Throttle Valve			
22	AR133-09	O-Ring			
28	AW156TR-46	Spring Pin			
29	AG50-29	Safety Lever			
30	AR250-05	O-Ring			
32	AR250-04	Exhaust Sleeve			
36	ADG200-27	Spanner Wrench Set			
40	AG50-40	Coupling Nut			
41	AG50-41	Motor Housing			
42	AR133-10	Valve Shaft			