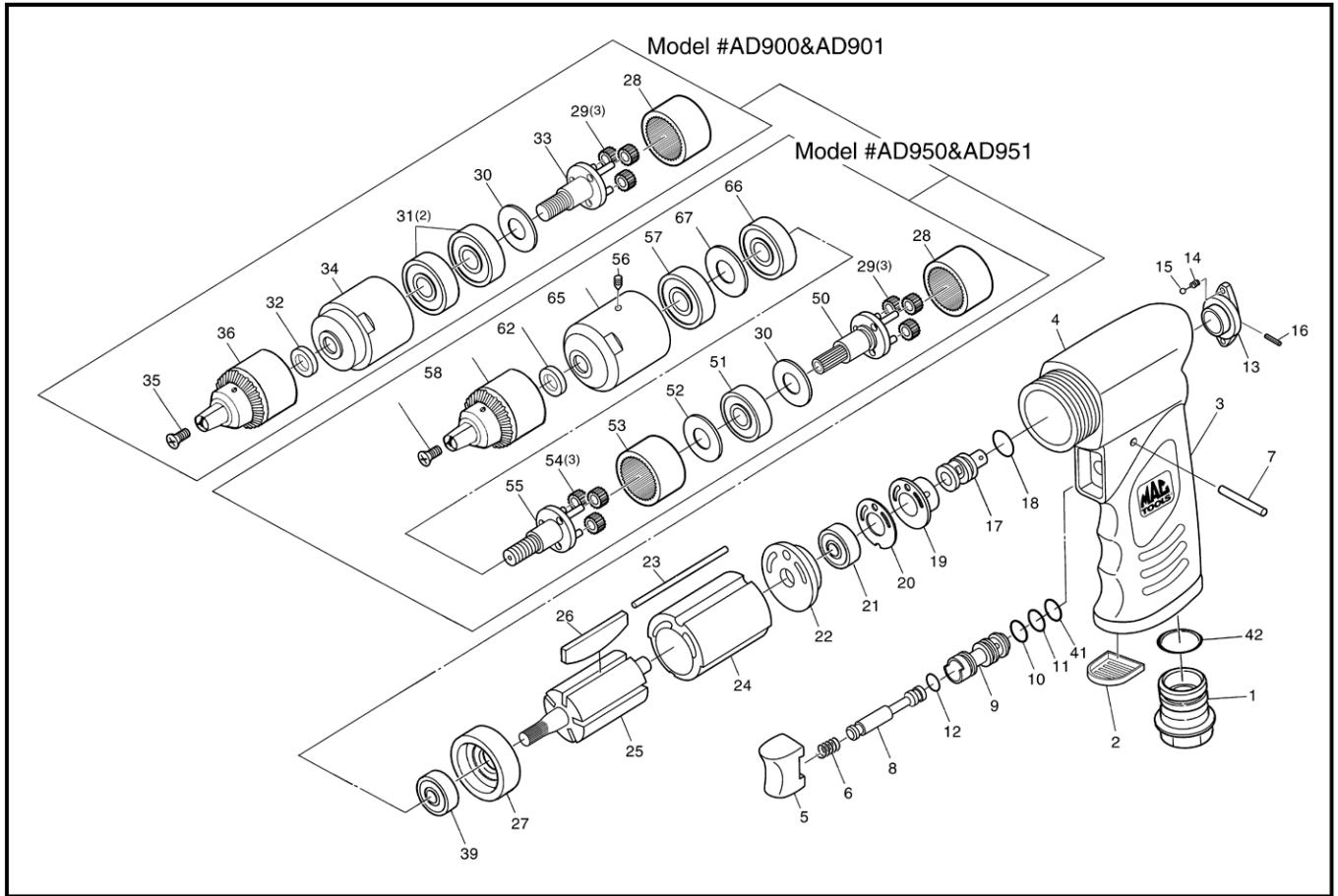


# REVERSIBLE AIR DRILLS

**Model #AD 900 & AD901 (3/8")**  
**#AD 950 & AD951 (1/2")**



## PARTS LIST:

Fig.	Parts No.	Description
1	AD901-01	Inlet Bushing
2	AW435-41	Deflector
3	AD901-03	Handle Cover
4	AD901-04	Motor Housing
5	AD527-25	Trigger
6	AD901-06	Valve Spring
7	AN213-03	Spring Pin
8	AD901-08	Valve Shaft
9	AD901-09	Valve Bushing
10	AW156TR-51	O-Ring
11	AW148TR-39	O-Ring
12	AR-133-09	Throttle Valve O-Ring
13	AD901-13	Reverse Valve Knob
14	AW226-06	Regulator Spring
15	AW148TR-27	Steel Ball
16	AD901-16	Spring Pin
17	AD901-17	Reverse Valve
18	AD901-18	O-Ring
19	AD901-19	Reverse Valve Case
20	AD901-20	Gasket
21	AR133-11	Ball Bearing
22	AD901-22	Rear End Plate
23	AD901-23	Dowel Pin
24	AD901-24	Cylinder
25	AD901-25	Rotor
26	AG70-20	Rotor Blade (5)
27	AD901-27	Front End Plate
28	AD901-28	Internal Gear
29	AD901-29	Idle Gear (3)
30	AD527-06	Spacer
31	AD527-04	Ball Bearing (2)
32	AD527-05	Chuck Spacer
33	AD901-33	Planet Carrier
34	AD901-34	Lock Ring
35	AD901-35	Chuck Screw
36	AD901-36	Drill Chuck 3/8"
37	AD901-37	Chuck Key (Not Shown)
38	AD901-38	Keyless Chuck 3/8" (Not Shown)
39	ADG200-20	Ball Bearing
41	AW375-17	O-Ring
42	AD901-42	O-Ring
43	AD950-50	Planet Carrier A
44	AD527-12	Ball Bearing
45	AD527-11	Spacer
46	AD527-10	Internal Gear
47	AD527-09	Idle Gear (3)
48	AD950-55	Planet Carrier
49	AD950-56	Lock Ring
50	AD527-03	Set Screw
51	AD950-58	Chuck Screw
52	AD950-59	Dead Handle (Not Shown)
53	AD950-60	Clamp Ring (Not Shown)
54	AD950-61	Set Screw (Not Shown)
55	AD950-62	Drill Chuck 1/2"
56	AD950-63	Chuck Key (Not Shown)
57	AD950-64	Keyless Chuck 1/2" (Not Shown)
58	AD950-65	Chuck Spacer
59	AD950-66	Ball Bearing
60	AD950-67	Ball Bearing