



! WARNING

Some dust created by power sanding, sawing, grinding, drilling, and other construction activities contains chemicals known to cause cancer, birth defects or other reproductive harm. Some examples of these chemicals are:

- lead from lead-based paints,
- crystalline silica from bricks and cement and other masonry products, and
- arsenic and chromium from chemically-treated lumber.

Your risk from these exposures varies, depending on how often you do this type of work. To reduce your exposure to these chemicals: work in a well ventilated area, and work with approved safety equipment, such as those dust masks that are specially designed to filter out microscopic particles.

! WARNING



ALWAYS READ INSTRUCTIONS BEFORE USING POWER TOOLS



ALWAYS WEAR SAFETY GOGGLES



WEAR HEARING PROTECTION



AVOID PROLONGED EXPOSURE TO VIBRATION

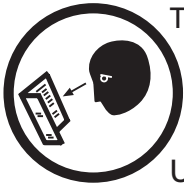
SPECIFICATIONS

Strokes Per Minute	.2600
Air Inlet	.1/4 NPT
Hose Size	.3/8 I.D.
Air Pressure	.90 PSI
Air Consumption	.4 CFM
Sound Level	.93 dBA
Length	.7-1/16"
Net Weight	.2.2 Lbs.

CAT-320AN

Heavy Duty Air Nibbler

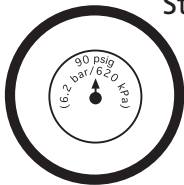
WARNING - FOLLOW THESE RULES FOR SAFE OPERATION!



This Instruction Manual Contains Important Safety Information.

READ THIS INSTRUCTION MANUAL CAREFULLY AND UNDERSTAND ALL INFORMATION BEFORE OPERATING THIS TOOL.

- Always operate, inspect and maintain this tool in accordance with American National Standards Institute Safety Code of



Portable Air Tools (ANSI B186.1) and any other applicable safety codes and regulations.

- For safety, top performance and maximum durability of parts, operate this tool at 90 psig 6.2 bar max air pressure with 3/8" diameter air supply hose.



- Always wear impact-resistant eye and face protection when operating or performing maintenance on this tool. Always wear hearing protection when using this tool.

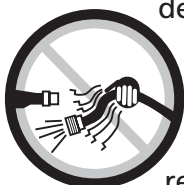


- High sound levels can cause permanent hearing loss. Use hearing protection as recommended by your employer or OSHA regulation.

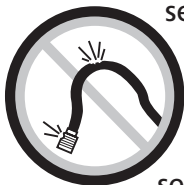
- Keep the tool in efficient operating condition.

- Operators and maintenance personnel must be physically able to handle the bulk, weight and power of this tool.

- Air under pressure can cause severe injury. Never direct air at yourself or others. Always turn off the air supply, drain hose of air pressure and detach tool from air supply before



installing, removing or adjusting any accessory on this tool, or before performing any maintenance on this tool. Failure to do so could result in injury. Whip hoses can cause serious injury. Always check for



damaged, frayed or loose hoses and fittings, and replace immediately. Do not use quick detach couplings at tool. See instructions for correct set-up.

- Air powered tools can vibrate in use. Vibration, repetitive motions or uncomfortable positions over extended periods of time may be harmful to



your hands and arms. Discontinue use of tool if discomfort, tingling feeling or pain occurs. Seek medical advice before resuming use.

- Place the tool on the work before starting the tool. Do not point or indulge in any horseplay with this tool.

- Slipping, tripping and/or falling while operating air tools can be a major cause of serious injury or death. Be aware of excess hose left on the walking or work surface.



- Keep body working stance balanced and firm. Do not overreach when operating the tool.

- Anticipate and be alert for sudden changes in motion during start up and operation of any power tool.



- Do not carry tool by the hose. Protect the hose from sharp objects and heat.

- Tool shaft may continue to rotate briefly after throttle is released. Avoid direct contact with accessories during and after use. Gloves will reduce the risk of cuts or burns.



- Keep away from rotating end of tool. Do not wear jewelry or loose clothing. Secure long hair. Scalping can occur if hair is not kept away from tool and accessories. Choking can occur if neckwear is not kept away from tool and accessories.

- Cutting with these tools will create sharp edges. Wear gloves to protect hands.

- Avoid direct contact with accessory and work surface during and after work.

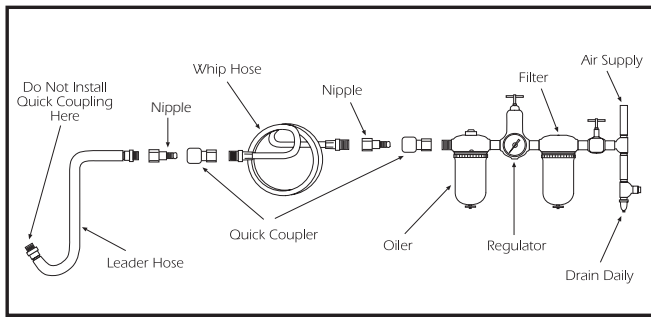
- Cutting edges and saw blades can become hot during use. Do not touch.

- Never force the tool to cut faster or through heavier gauge material than rated capacity.

- Do not lubricate tools with flammable or volatile liquids such as kerosene, diesel or jet fuel.

- Don't force tool beyond its rated capacity.

- Do not remove any labels. Replace any damaged labels.



AIR SUPPLY

Tools of this class operate on a wide range of air pressures. It is recommended that air pressure of these tools measure 90 PSI at the tool while running free. Low pressure (under 90 psig; 6.2bar) reduces the speed of all air tools. Low air pressure not only wastes time, but also costs money. Higher pressure (over 90 psig; 6.2 bar) raises performance beyond the rated capacity of the tool which will shorten the tool's life because of faster wear and could cause injury.

Always use clean, dry air. Dust, corrosive fumes and/or water in the air line will cause damage to the tool. Drain the air tank daily. Clean the air inlet filter screen on at least a weekly schedule. The recommended hookup procedure can be viewed in the above figure.

The air inlet used for connecting air supply, has standard 1/4" NPT American Thread. Line pressure should be increased to compensate for unusually long air hoses (over 25 feet). Minimum hose diameter should be 3/8" I.D. and fittings should have the same inside dimensions and be tightly secured.

LUBRICATION

Lubricate the air motor daily with motor oil. If no air line oiler is used, run a teaspoon of oil through the tool. The oil can be squirted into the tool air inlet or into the hose at the nearest connection to the air supply, then run the tool. The amount of oil to be used is 1 ounce. Overfilling will cause a reduction in the power of the tool.

OPERATION

Punch Replacement:

Disconnect air supply from tool.

1. Remove set screw (#40) from cutting head.
2. Remove cutter die (#39).
3. Remove nibbler housing nut (#38) and cutter nut (#37).
4. Replace punch.
5. Reverse above procedure, check screws for tightness before operating tool.

Die Adjustment

Disconnect air supply from tool.

Loosen set screw (#40). Turn cutter die to desired position. Tighten set screw.

Warning

- Cutting with this tool will create sharp edges. Wear gloves to protect hands.
- Avoid direct contact with work surface during and after work.
- Cutting edges can become hot during use. Do not touch.
- Never force the tool to cut faster or through heavier gauge material than rated capacity

WARRANTY

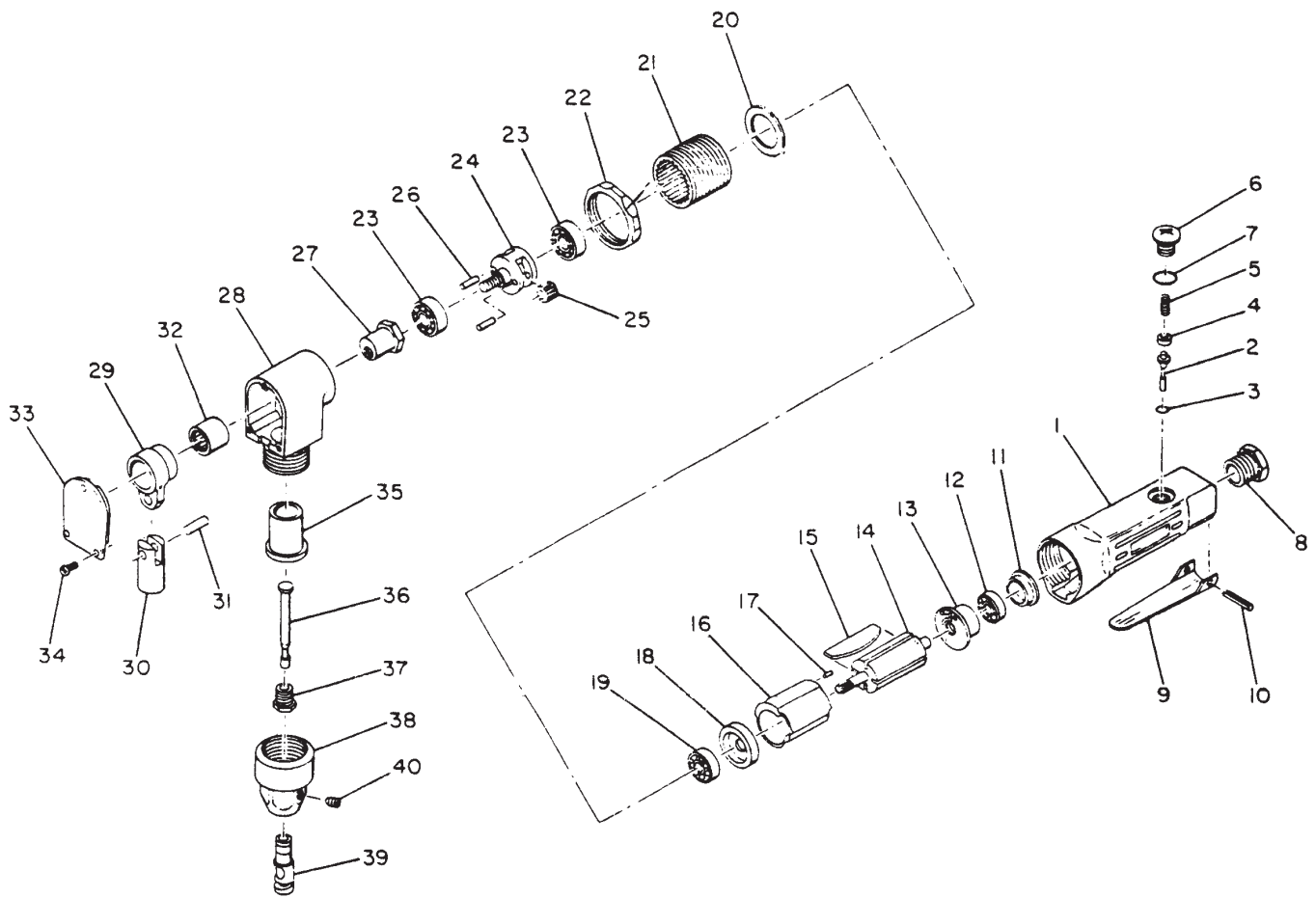
Cornwell warrants its air tools for a period of 1 year to the consumer. We will repair any air tool covered under this warranty which proves to be defective in material or workmanship during the warranty period. In order to have your tool repaired, return the tool to any Cornwell Authorized Warranty Center, freight prepaid. Please include a copy of your proof of purchase and a brief description of the problem. The tool will be inspected and if any part or parts are found to be defective in material or workmanship, they will be repaired free of charge and the repaired tool will be returned to you freight prepaid.

This warranty gives you specific rights. You may also have other rights which vary from state to state.

The foregoing obligation is Cornwell's sole liability under this or any implied warranty and under no circumstances shall Cornwell be liable for any incidental or consequential damages.

Note: Some states do not allow the exclusion or limitation of incidental or consequential damages so the above limitation or exclusion may not apply to you.

PARTS BREAKDOWN - CAT-320AN



Ref. #	Item #	DESCRIPTION	QTY	Ref. #	Item#	DESCRIPTION	QTY
1	229B1C	Motor Housing	1	21	229B21	Gear Case	1
*2		Throttle Valve	1	22	229B22	Gear Case Nut	1
*3		Throttle Valve Seal	1	23	229B25	Spindle Bearing	2
*4		Throttle Valve Spring Seat	1	24	229B24	Spindle	1
*5		Throttle Valve Spring	1	25	71125	Spindle Planet gear	2
6	229B6	Throttle Valve Plug	1	26	71126	Spindle Planet Gear Shaft	2
7	229B7	Throttle Valve Plug Seal	1	27	229B27	Eccentric Nut	1
8	229B8	Inlet Bushing	1	28	229B28	Nibbler Housing	1
9	229B9	Throttle Lever	1	***29		Nibbler Crank	1
10	229B10	Throttle Lever Pin	1	***30		Crankshaft	1
11	229B11	End Plate Cap	1	***31		Crankshaft Pin	1
12	21114	Rear Rotor Bearing	1	***32		Crank Bearing	1
13	229B13	Rear End Plate	1	33	229B33B	Nibbler Housing Cover	1
14	229B14	Rotor	1	34	229B34	Housing Cover Screw	3
15	229B15	Vane	4	35	229B35	Crankshaft Bushing	1
**16		Cylinder	1	36	229B36	Cutter	1
**17		Cylinder Dowel	1	37	229B37	Cutter Locknut	1
18	229B18	Front End Plate	1	38	229B38	Nibbler Housing Nut	1
19	21417	Front Rotor Bearing	1	39	229B39	Cutter Die	1
20	229B20	Motor Clamp Washer	1	40	229B40	Cutter Die Set Screw	1

* Available ONLY as 229B2A assembly including ref. no. 2, 3, 4 & 5

** Available ONLY as 229B16A assembly including ref. no. 16 & 17

*** Available ONLY as 229B29A assembly including ref. no. 29, 30, 31 & 32