



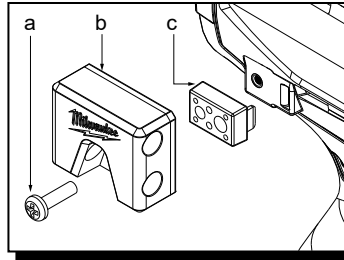
SERVICE PARTS LIST

BULLETIN NO.
PN0003521

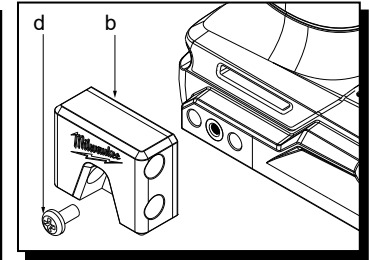
SPECIFY CATALOG NO. AND SERIAL NO. WHEN ORDERING PARTS		REVISED BULLETIN	DATE
M12™ Subcompact Brushless 1/4" Hex Impact Driver			Oct. 2024
CATALOG NO.	3450-20	SERIAL NO.	R18A
		WIRING INSTRUCTION	

EXAMPLE:
00 0 Component Parts (Small #)
Are Included When Ordering
The Assembly (Large #).

Bit Holder on M12™ Products



Bit Holder on M18™ Products



49-16-3697 BIT HOLDER (ACCESSORY)

FIG.	PART NO.	DESCRIPTION OF PART
a	06-82-3008	6-32 x 12.7mm Pan Hd. Phillips Screw (For M12™ Tools)
b	-----	Bit Holder
c	-----	Adapter (For M12™ Tools)
d	06-82-2500	6-32 x 7mm Pan Hd. Phillips Screw (For M18™ Tools)

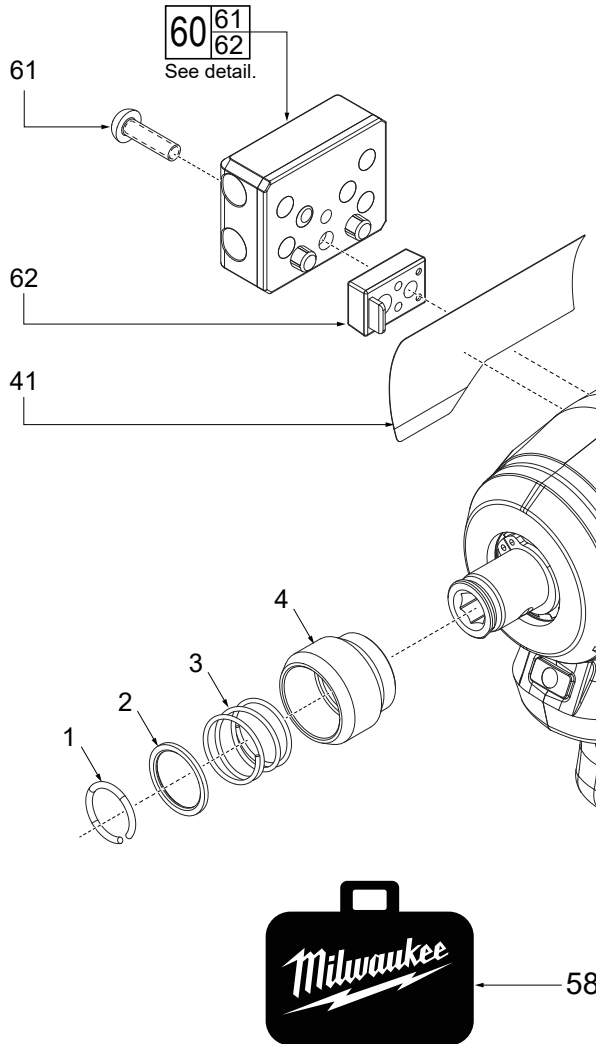


FIG.	PART NO.	DESCRIPTION OF PART	NO. REQ.
1	34-80-0013	Retaining Ring	(1)
2	45-88-1881	Washer	(1)
3	40-50-1470	Spring	(1)
4	45-22-2643	Sleeve	(1)
37	42-70-0058	Housing Connection Clip	(1)
38	06-82-2500	6-32 x 7mm Pan Hd T-15 Screw	(1)
39	-----	Belt Clip	(1)
41	12-20-7048	Service Nameplate	(1)
58	42-55-3450	Zippered Tool Bag	(1)
60	49-16-3697	Bit Holder Kit (Accessory)	(1)
61	06-82-3008	6-32 x 12.7mm Pan Hd. Philips Screw (for M12™)(Accessory)	(1)
62	-----	Adapter (for M12™) (Accessory)	(1)
100	42-70-0497	Belt Clip Service Kit	(1)

SCREW TORQUE SPECIFICATIONS

FIG.	PART NO.	WHERE USED	SEAT TORQUE	
			(kgf-cm)	(lb-in)
38	06-82-2500	Belt Clip	12±2	10±2
61	06-82-3008	Bit Holder	16±2	14±2