



## SERVICE PARTS LIST

**BULLETIN NO.**  
**54-38-2340**

SPECIFY CATALOG NO. AND SERIAL NO. WHEN ORDERING PARTS		REVISED BULLETIN	DATE
<b>M18 FUEL™ One-Key™ Braking Angle Grinder w/ Paddle Switch</b>			May 2022
<b>CATALOG NO.</b>	<b>2882-20</b>	<b>STARTING SERIAL NO.</b>	<b>L68A</b>
		<b>WIRING INSTRUCTION</b> <b>SEE PAGE 2</b>	

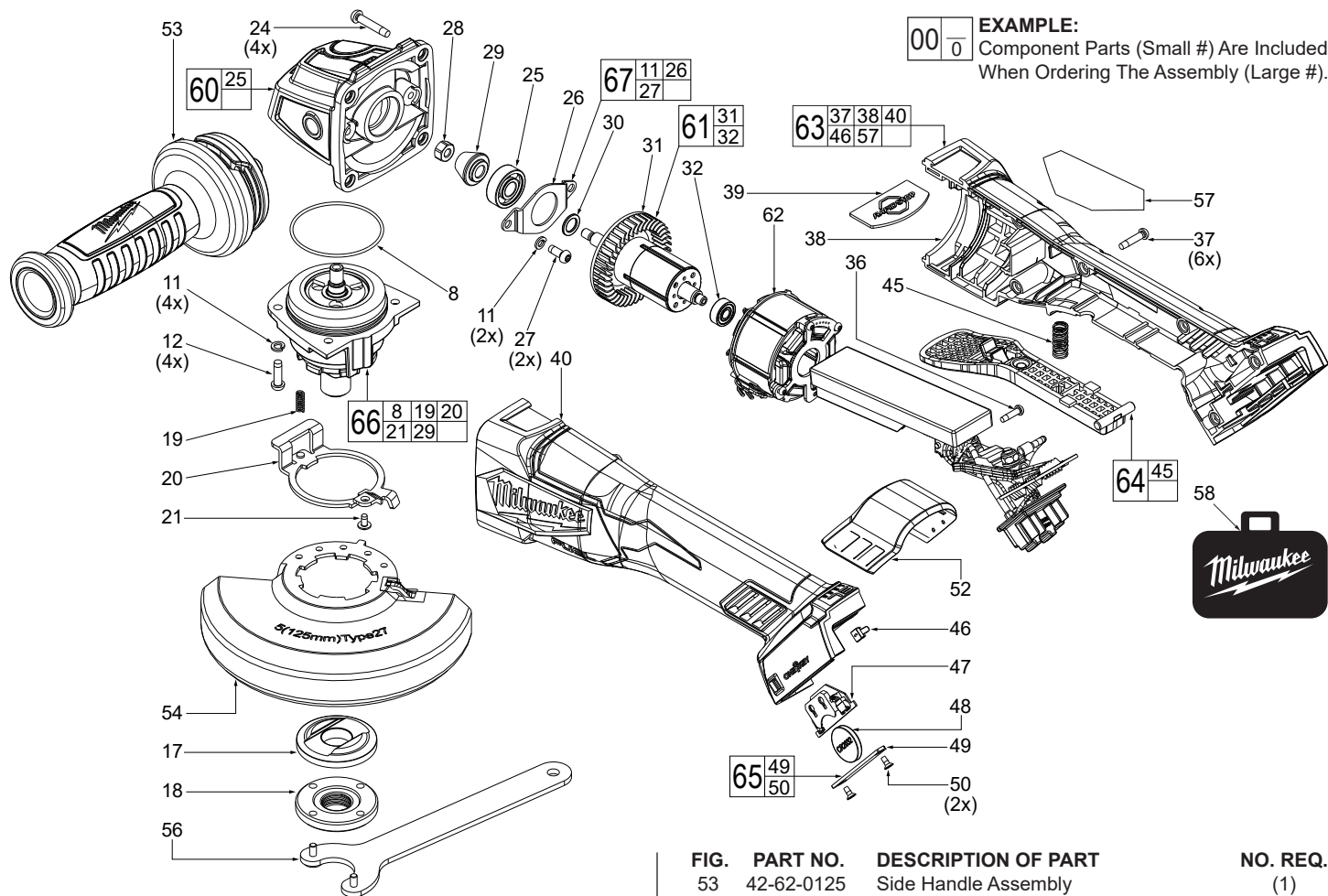


FIG.	PART NO.	DESCRIPTION OF PART	NO. REQ.
8	34-40-0330	O-Ring	(1)
11	05-90-0225	Spring Washer	(6)
12	05-78-5316	M4 x 14mm Pan Hd. Taptite T-20 Screw	(4)
17	43-34-3000	Backing Flange Disc	(1)
18	44-40-7100	5/8" Flange Nut	(1)
19	40-50-0386	Spring	(1)
20	44-20-0091	Guard Locking Tang	(1)
21	45-04-0031	M3 x 8.5mm Pan Washer Hd. Phillips Screw	(1)
24	05-88-1255	M4 x 22mm Pan Hd. ST T-20 Screw	(4)
25	02-04-0621	Ball Bearing	(1)
26	44-86-2800	Bearing Retainer	(1)
27	05-78-0105	M4 x 10mm Pan Hd. T-20 Screw	(2)
28	05-55-0620	M5 Hex Nut	(1)
29	-----	Pinion Gear	(1)
30	45-88-0406	Washer	(1)
31	-----	Rotor	(1)
32	02-04-0111	Ball Bearing	(1)
36	06-82-1087	M3 x 12mm Pan Hd. ST T-10 Screw	(1)
37	06-82-2025	M3.5 x 16mm Pan Hd. ST T-10 Screw	(6)
38	-----	Right Housing Halve - Cover	(1)
39	43-84-0207	Rapid Stop Plate	(1)
40	-----	Left Housing Halve - Support	(1)
45	40-50-0243	Spring	(1)
46	-----	One-Key LED Lens	(1)
47	22-09-0072	Coin Cell PCBA	(1)
48	-----	3V Coin Cell Battery (CR2032)	(1)
49	31-15-0147	Coin Cell Cover	(1)
50	05-81-1100	M2.6 x 6mm Flat Head Phillips ST Screw	(2)
52	31-15-0103	Dust Cover	(1)

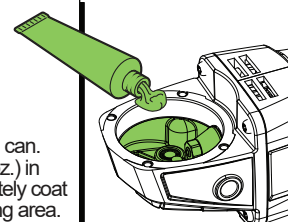
FIG.	PART NO.	DESCRIPTION OF PART	NO. REQ.
53	42-62-0125	Side Handle Assembly	(1)
54	43-54-1221	5" Type 27 Guard Assembly (Std. Equip. Shown)	(1)
	43-54-1230	5" Type 1 Guard Assembly (Optional, Not Shown)	(1)
	43-54-1200	4.5" Type 27 Guard Assembly (Optional, Not Shown)	(1)
	43-54-1210	4.5" Type 1 Guard Assembly (Optional, Not Shown)	(1)
55	43-54-4010	5" Plastic Clip-On Guard Attach. (Not Shown)	(1)
56	49-96-7215	Spanner Wrench	(1)
57	12-20-0366	Service Nameplate	(1)
58	50-55-3560	Contractor Bag	(1)
60	14-29-0098	Gearcase Assembly	(1)
61	23-40-6010	Rotor Assembly	(1)
62	14-20-0476	Electronic Assembly	(1)
63	14-38-0101	Housing Kit	(1)
64	31-92-0257	Paddle Trigger Assembly	(1)
65	31-15-0148	Coin Cell Cover Kit	(1)
66	14-73-2000	5/8"-11 Spindle Hub Assembly	(1)
67	14-62-0300	Bearing Retaining Plate Kit	(1)

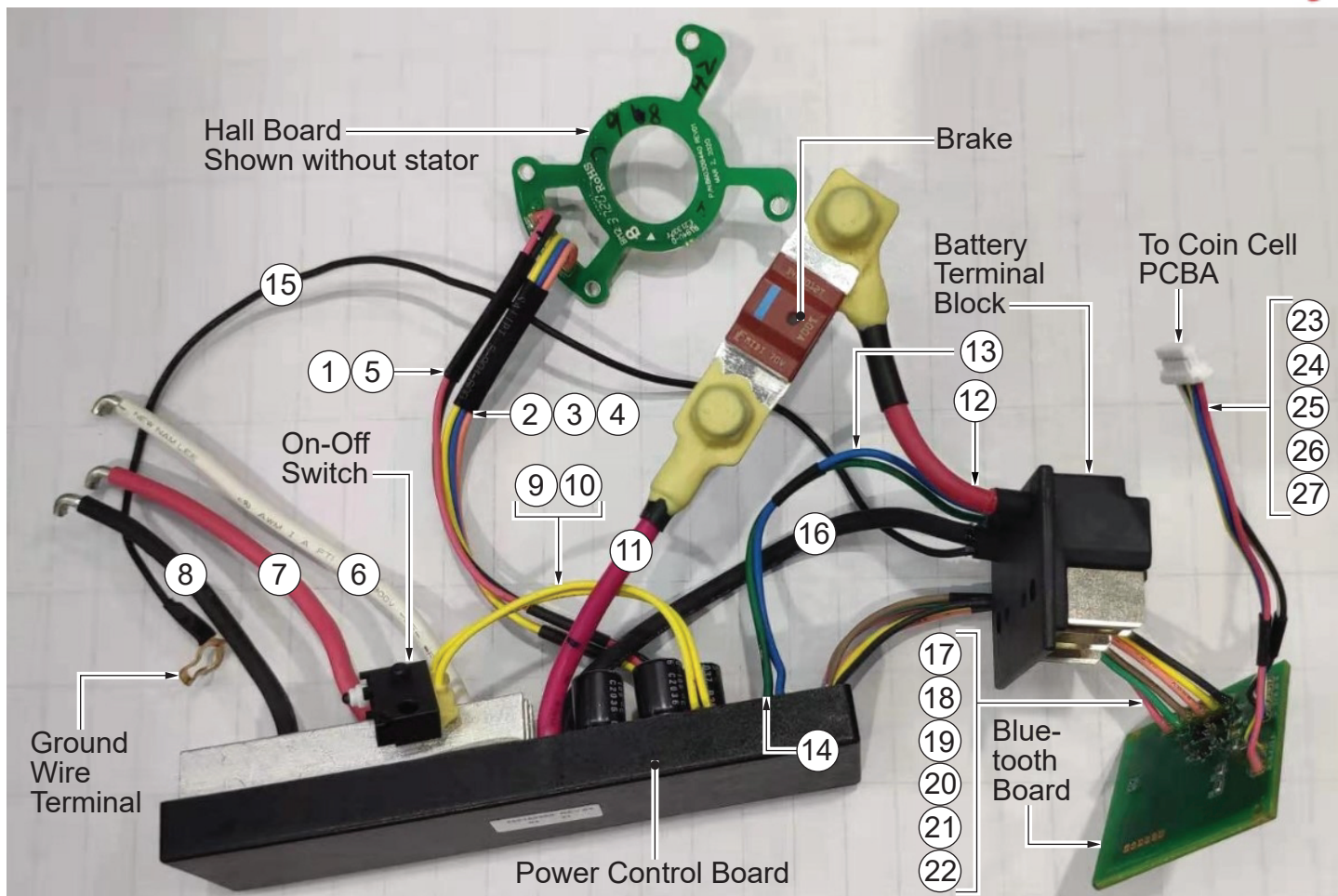
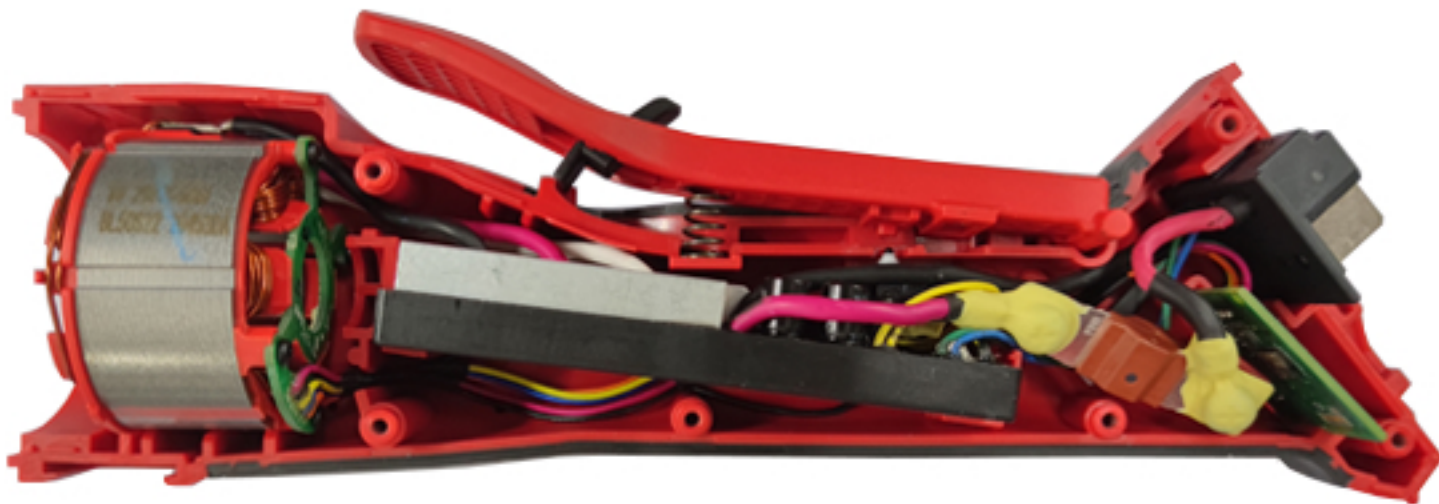
### \*LUBRICATION NOTE:

When servicing the Gear Case Assembly, 90-95% of the old grease must be removed prior to new grease being added.

### FIG. LUBRICATION\*

56 Type 'J' Grease, No. 49-08-4220, 1 lb. can. Place approximately 16 grams (.562 oz.) in gearcase cavity, being sure to completely coat all teeth of bevel pinion and surrounding area.





Wire	Color	Orientation
1	Red	From Hall Board to Power Control Board
2	Pink	From Hall Board to Power Control Board
3	Blue	From Hall Board to Power Control Board
4	Yellow	From Hall Board to Power Control Board
5	Black	From Hall Board to Power Control Board
6	White	From Power Control Board to Stator
7	Red	From Power Control Board to Stator
8	Black	From Power Control Board to Stator
9	Yellow	From Power Control Board to On-Off Switch
10	Yellow	From Power Control Board to On-Off Switch
11	Red	From Power Control Board to Brake
12	Red	From Battery Terminal Block to Brake
13	Red	From Battery Terminal Block to Brake
14	Black	HV Wire. From Battery Terminal Block to Gearcase
15	Black	From Power Control Board to Battery Terminal Block
16	Black	From Power Control Board to Bluetooth Board
17	Red	From Power Control Board to Bluetooth Board
18	Green	From Power Control Board to Bluetooth Board
19	Brown	From Power Control Board to Bluetooth Board
20	Pink	From Power Control Board to Bluetooth Board
21	Yellow	From Power Control Board to Bluetooth Board
22	Black	From Power Control Board to Bluetooth Board
23	White	From Bluetooth Board to 5 Pin Terminal
24	Black	From Bluetooth Board to 5 Pin Terminal
25	Yellow	From Bluetooth Board to 5 Pin Terminal

Wire	Color	Orientation
26	Blue	From Bluetooth Board to 5 Pin Terminal
27	Red	From Bluetooth Board to 5 Pin Terminal

As an aid to reassembly, take notice of wire routing and position in wire guides and traps while dismantling tool.

Be sure that all components of the electronics kit are seated firmly and squarely in the housing recesses.

Avoid pinched wires, be sure that all wires and sleeves are pressed completely down in wire guides and traps.

Prior to securing the housing cover onto the housing support, be sure that there are no interferences.

Before installing the battery, check for proper functionality of paddle trigger.

Install battery and depress paddle trigger to assure tool is operating properly.