



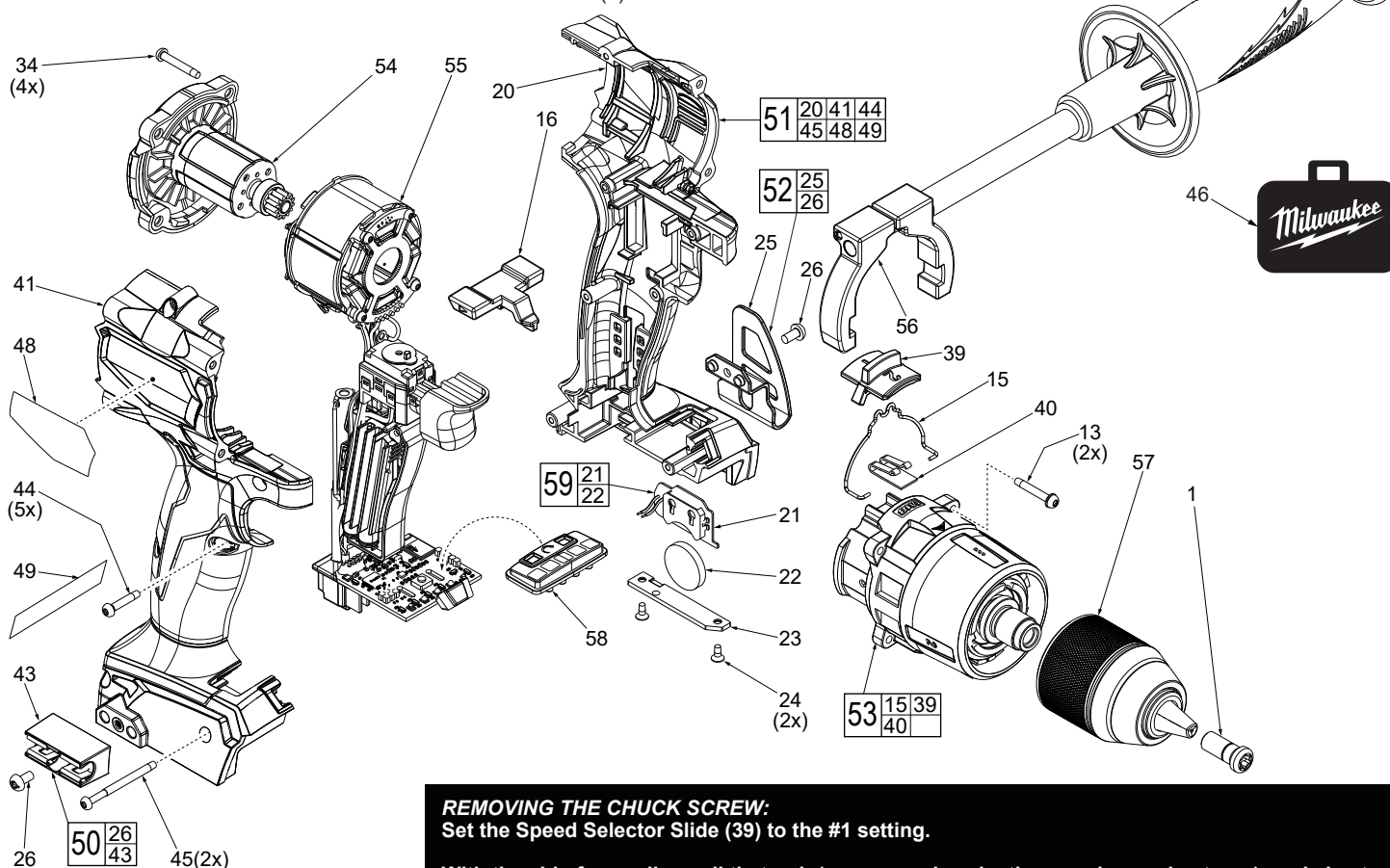
SERVICE PARTS LIST

BULLETIN NO.
54-06-5020

SPECIFY CATALOG NO. AND SERIAL NO. WHEN ORDERING PARTS				REVISED BULLETIN	DATE
M18™ FUEL™ One-Key™ Driver-Drill					June 2018
CATALOG NO.	2805-20	STARTING SERIAL NO.	J78A	WIRING INSTRUCTION SEE PAGE 2	

FIG.	PART NO.	DESCRIPTION OF PART	NO. REQ.
1	05-88-0019	M8.0 x 1 LH T-40 Chuck Screw	(1)
13	06-82-7337	M3 x 20mm Pan Hd. T-10 Screw w/Washer	(4)
15	45-24-1045	Shift Spring	(1)
16	42-42-3001	Forward/Reverse Shuttle	(1)

EXAMPLE:
Component Parts (Small #) Are Included
When Ordering The Assembly (Large #).



REMOVING THE CHUCK SCREW:

Set the Speed Selector Slide (39) to the #1 setting.

With the aid of a small pencil tip torch (or use an air reduction nozzle on a heat gun) apply heat into the chuck opening, directly to the head of reversing screw just prior to removing the screw. Place a T40 1/4" torx bit into the head of the reversing screw and place a 1/4" boxed end wrench over the hex on the T40 bit. It is recommended to use a 12"-18" metal tube or pipe as leverage over the boxed wrench. In a clockwise direction apply a slow, steady force on the 'cheater bar' to break the screw loose.

FIG.	PART NO.	DESCRIPTION OF PART	NO. REQ.
20	-----	Left Housing Halve - Support	(1)
21	-----	Coin Cell Board Assembly	(1)
22	-----	3V Coin Cell Battery (CR 2032)	(1)
23	31-15-0011	Coin Cell Cover	(1)
24	05-81-1100	M2.6 x 6mm ST Phillips Screw	(2)
25	-----	Belt Clip	(1)
26	06-82-2500	6-32 x 7mm Pan Hd. Slit. T-15 Mach. Screw	(2)
34	06-82-7336	M3 x 20mm Pan Hd. ST T-10 Screw	(4)
39	44-10-4002	Speed Selector Slide	(1)
40	40-50-9001	Detent Spring	(1)
41	-----	Right Housing Halve - Cover	(1)
43	-----	Bit Holder Housing	(1)
44	06-82-6350	M3 x 16mm Pan Hd. ST T-10 Screw	(5)
45	06-82-2367	M3 x 38mm Pan Hd. ST T-10 Screw	(2)
46	42-55-9005	Blow Molded Carrying Case	(1)
48	12-20-0478	Service Namelate	(1)
49	10-20-1048	Warning Label	(1)
50	43-72-0950	Bit Holder Kit	(1)
51	31-44-2806	Housing Kit	(1)
52	42-70-0950	Belt Clip Kit	(1)
53	14-29-5004	Gearcase Assembly	(1)
54	16-07-1016	Rotor Assembly	(1)
55	14-20-2806	Electronic Assembly	(1)

REMOVING THE KEYLESS CHUCK:

Tighten a 1/2" or 10mm Allen Key into the jaws of the chuck. Place the tool into a vise with soft jaws (this will require that you remove the belt clip from the tool). It is recommended to use a 12"-18" metal tube or pipe as leverage over the allen key. In a counter-clockwise direction apply a slow, steady force on the 'cheater bar' to break the chuck loose.

INSTALLING NEW CHUCK AND SCREW:

Torque Chuck to 1095 kg/cm (950.418 in/lbs or 28.93 ft/lbs)
Torque Screw to 461 kg/cm (400.130 in/lbs or 33.34 ft/lbs)

FIG.	PART NO.	DESCRIPTION OF PART	NO. REQ.
56	42-62-1002	Side Handle Assembly	(1)
57	42-66-8003	1/2" Keyless Chuck	(1)
58	45-24-2806	Wireless Selector Kit	(1)
59	14-20-0068	Coin Cell Board Assembly with Battery	(1)

Be sure that all mechanical and electrical components are placed firmly and squarely in the corresponding cavities of left housing half.

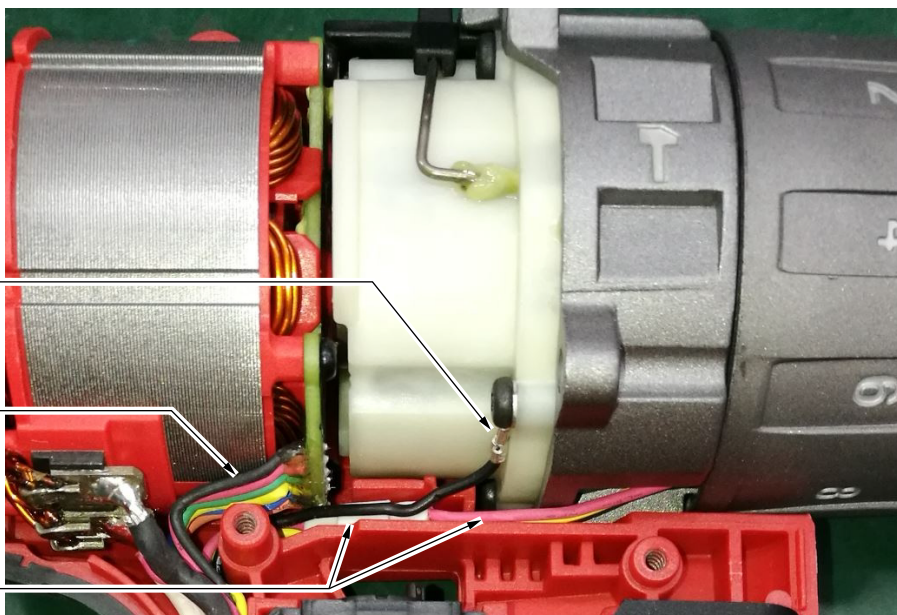
Be very careful and make sure that all wires and the wire ribbon are placed firmly down in wire channels and traps.

Make sure there are no interferences when installing the right housing half.

High voltage ground wire and terminal

Route these six wires close to stator than down in housing half cavity behind on-off switch

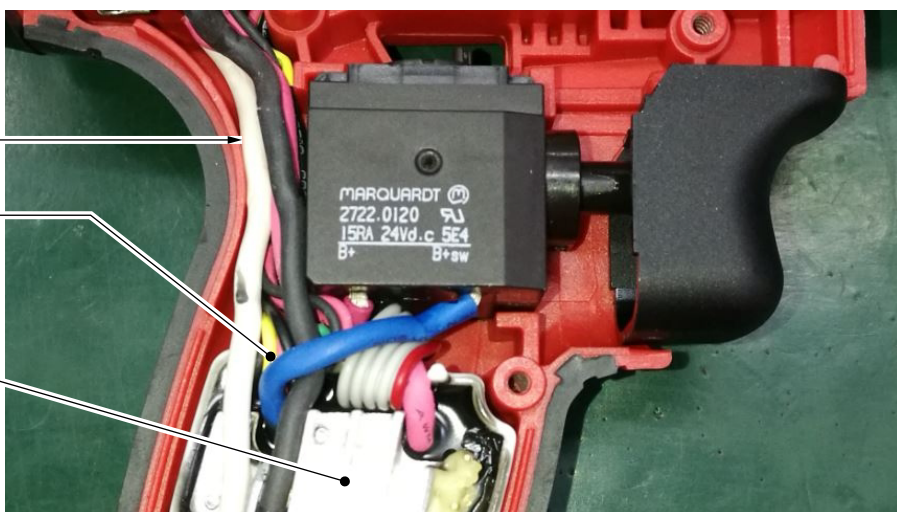
Connect wires from gearcase assembly with corresponding wires of potted circuit board. Tuck wires and connectors in recess under gearcase assembly than down in housing half cavity behind on-off switch



All wires in this area are to be pushed completely down into handle cavity behind switch. Prevent pinched wires here when putting housing cover in place

Keep blue wire away from heat sink

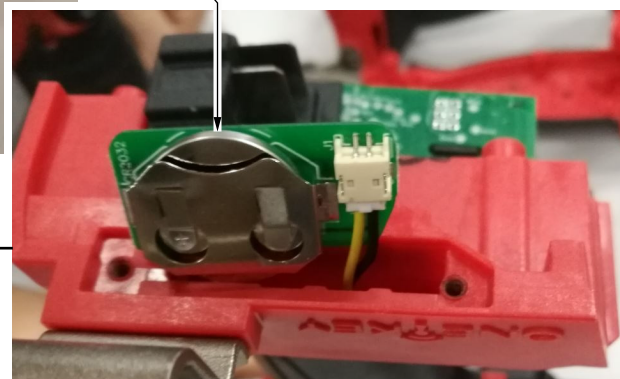
Heat Sink



Keep wires away from heat sink

3V coin cell battery (CR 2032)

Watch for pinched wires here



ATTENTION
OBSERVE PRECAUTIONS
FOR HANDLING
ELECTROSTATIC
SENSITIVE
DEVICES