



SERVICE PARTS LIST

BULLETIN NO.
54-44-2560

SPECIFY CATALOG NO. AND SERIAL NO. WHEN ORDERING PARTS		REVISED BULLETIN	DATE
M18™ FUEL™ RIVET TOOL with ONE-KEY™			Feb. 2022
CATALOG NO.	2660-20	SERIAL NUMBER	L93A
		WIRING INSTRUCTION See Page 3	

FIG.	PART NO.	DESCRIPTION OF PART	NO. REQ.
1	43-56-2553	1/4" Retention Nose Piece	(1)
2	49-16-2660JS	Outer Jaw Housing	(1)
3	34-40-8010	15 Degree Jaw (Set of 3)	(1)
6		O-Ring Seal	(1)
7		Inner Jaw Housing	(1)
8	40-50-8937	Jaw Pusher Spring	(1)
9	05-78-5315	M5 x 33mm Pan Hd. Taprite T-25 Screw	(4)
23	45-76-0853	Mandrel Guide	(1)

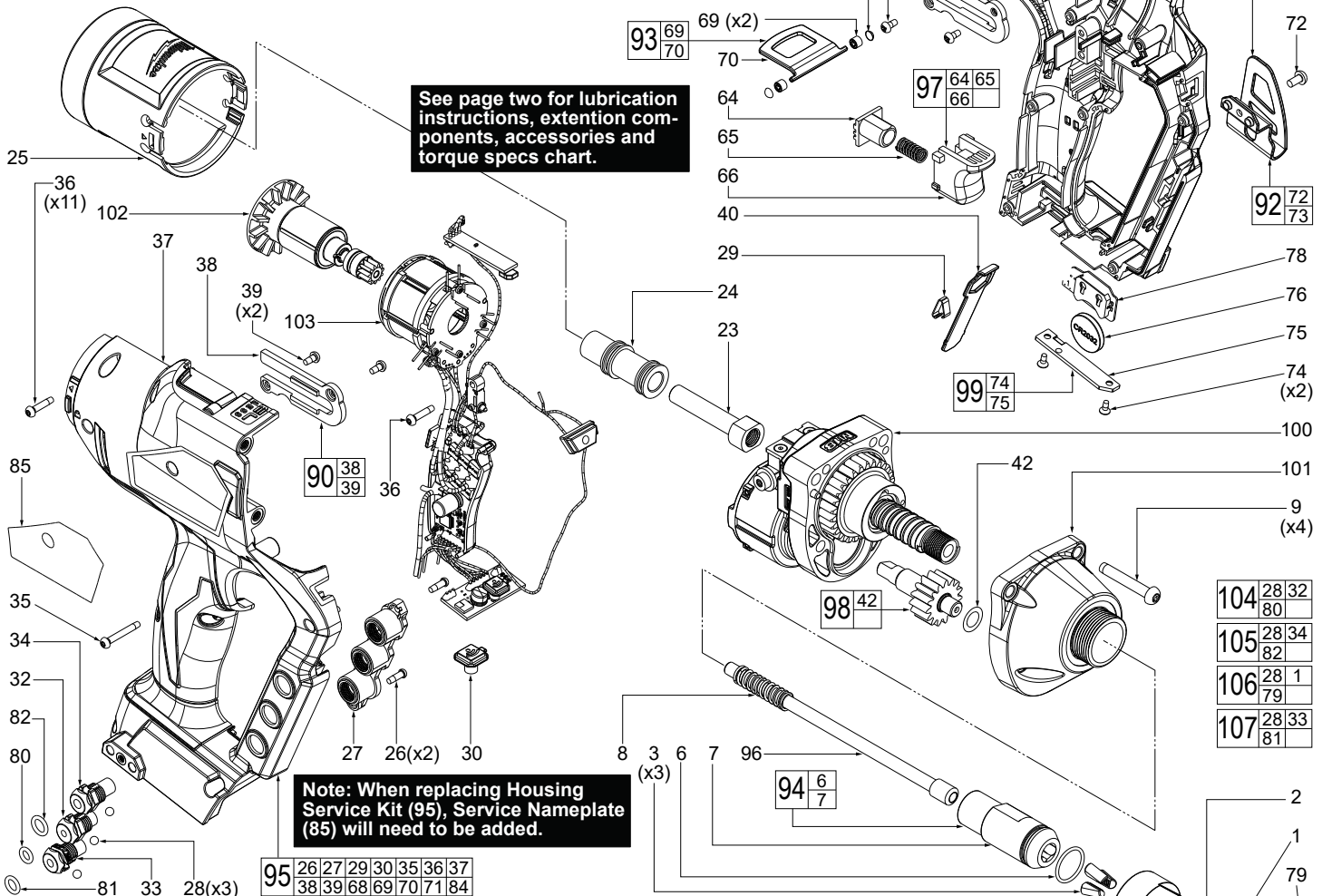


FIG.	PART NO.	DESCRIPTION OF PART	NO. REQ.
24	45-76-0855	Mandrel Chute	(1)
25	43-72-2557	Mandrel Cup Assembly	(1)
26	06-82-0151	M3 x 9mm Pan Hd. ST T-8 Screw	(2)
27	43-84-0845	Threaded Insert Cover	(1)
28		4mm Steel Ball	(4)
29	40-50-8938	Wrench Retention Spring Plate	(1)
30	44-06-0067	One-Key Lens	(1)
32		3/16" Retention Nose Piece	(1)
33		9/32" Retention Nose Piece	(1)
34		7/32" Retention Nose Piece	(1)
35	06-82-0079	M3 x 22mm Pan Hd. ST T-10 Screw	(12)
36	06-82-1080	M3 x 14mm Pan Hd. ST T-10 Screw	(12)
37		Right Housing Halve-Cover	(1)
38		Right Anti-Rotation Plate	(1)
39		M3 x 6mm Pan Hd. Phillips Screw	(4)
40	49-96-7220	Wrench	(1)
42	45-88-0631	Flat Washer	(1)
64		Switch Spring Housing	(1)
65		Trigger Spring	(1)
66		Trigger Cap	(1)
68		Left Anti-Rotation Plate	(1)
69		Lanyard Ring Bushing	(1)
70		Lanyard Ring	(1)
71		Left Housing Halve-Support	(1)
72	06-82-2500	6-32 Pan Hd. Slotted T-15 Screw	(1)
73		Belt Hook	(1)
74	05-81-1100	M2.6 x 6mm Flat Hd. Phillips Screw	(2)
75		Coin Cell Cover	(1)
76		Coin Cell Battery	(1)
78		Coin Cell PCBA	(1)
79		O-Ring-Green	(1)
80		O-Ring-Black	(1)

EXAMPLE:
Component Parts (Small #) Are Included
When Ordering The Assembly (Large #).

FIG.	PART NO.	DESCRIPTION OF PART	NO. REQ.
81		O-Ring- Brown	(1)
82		O-Ring-Red	(1)
84		Spring Washer	(1)
85	12-20-0314	Service Nameplate	(1)
90	45-88-1840	Right Anti-Rotation Service Kit	(1)
91	45-88-1845	Left Anti-Rotation Service Kit	(1)
92	42-70-0950	Belt Clip Service Kit	(1)
93	14-46-9315	Lanyard Ring Service Kit	(1)
94	43-56-2554	Jaw Housing Service Kit	(1)
95	31-44-6110	Housing Service Kit	(1)
96	44-60-2555	Pusher Tube Service Assembly	(1)
97	45-72-0255	Trigger Switch Service Kit	(1)
98	38-50-5532	Output Shaft Service Kit	(1)
99	14-67-0288	Coin Cell Cover Service Kit	(1)
100	44-66-6197	Rear Gear Case Service Assembly	(1)
101	28-50-2857	Front Gear Case Service Assembly	(1)
102	16-01-2875	Rotor Service Assembly	(1)
103	14-20-5035	Electronic Service Assembly	(1)
104	48-98-0025	3/16" Retention Nosepiece Assembly	(1)
105	48-98-0026	7/32" Retention Nosepiece Assembly	(1)
106	48-98-0027	1/4" Retention Nosepiece Assembly	(1)
107	48-98-0028	9/32" Retention Nosepiece Assembly	(1)

Extention Components

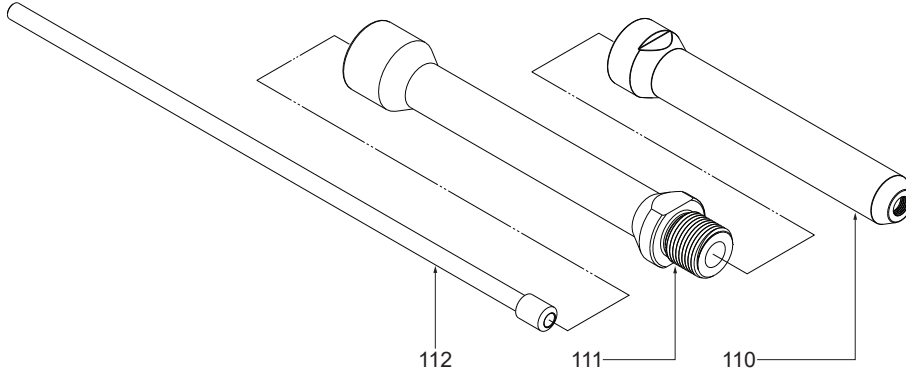
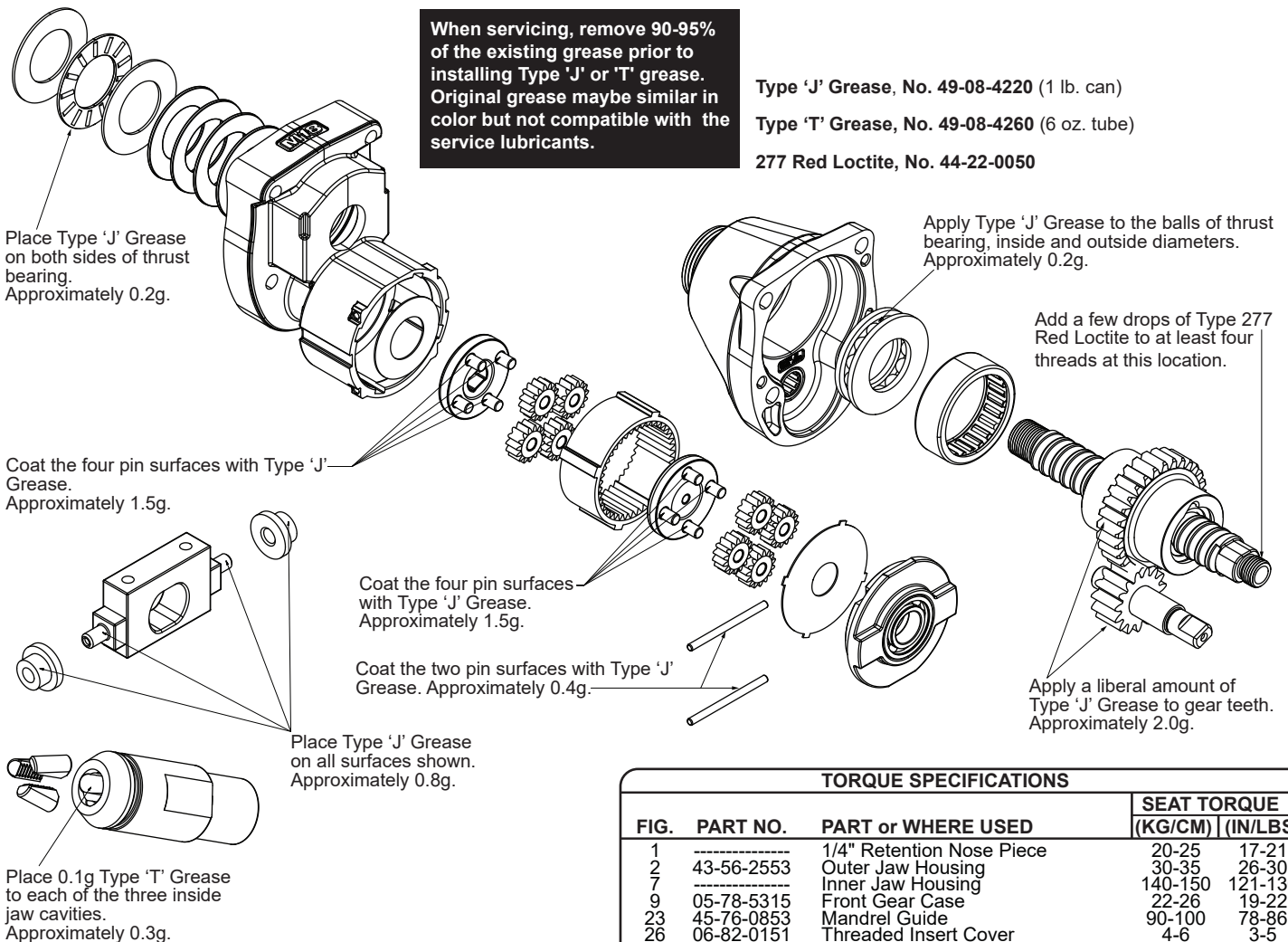


FIG.	PART NO.	DESCRIPTION OF PART	NO. REQ.
110	43-56-2560	Extended Outer Jaw Housing	(1)
111	43-56-2561	Extended Inner Jaw Housing	(1)
112	43-56-2562	Extended Jaw Pusher	(1)

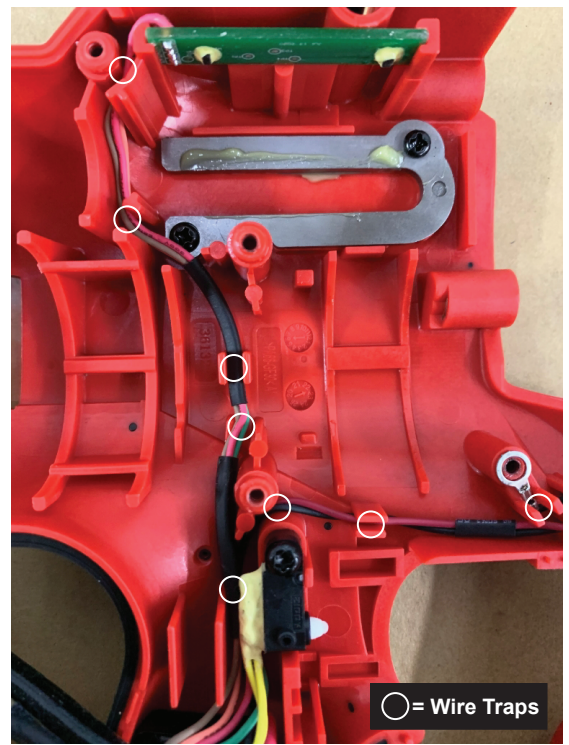
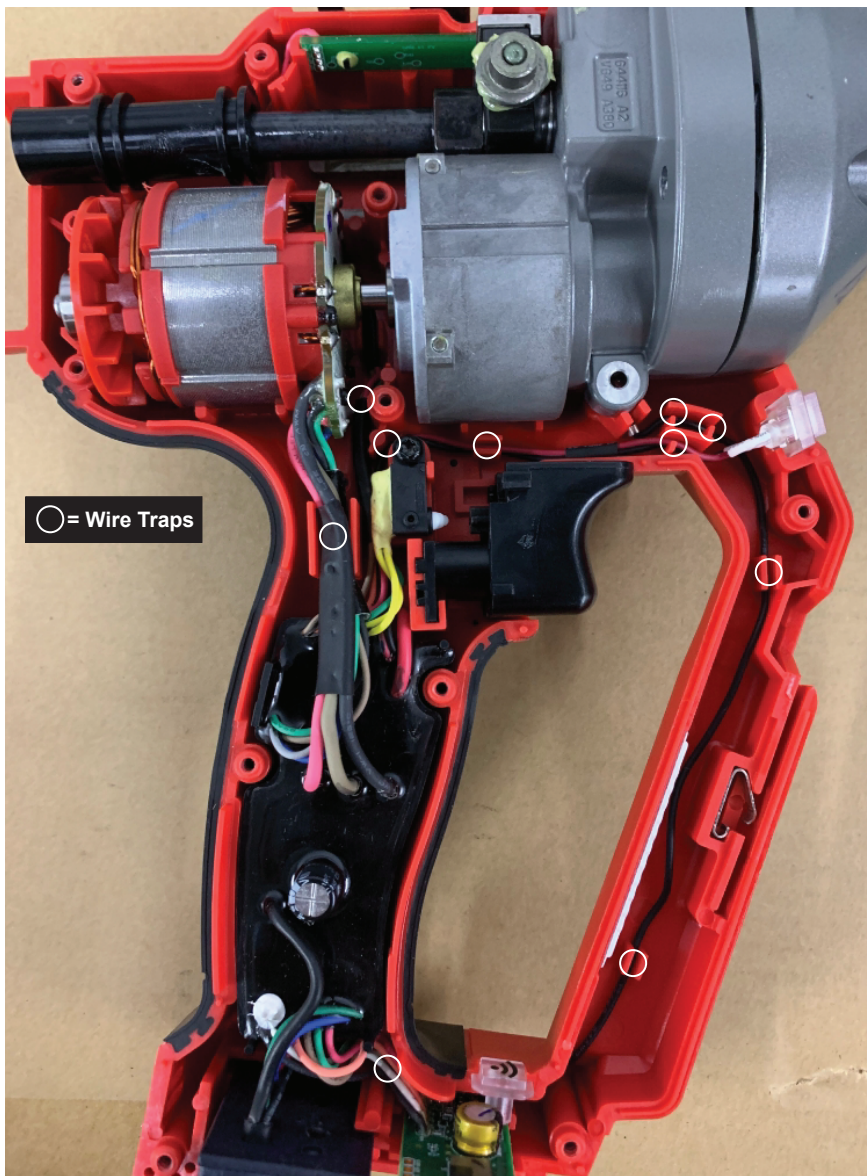


TORQUE SPECIFICATIONS

FIG.	PART NO.	PART or WHERE USED	SEAT TORQUE	
			(KG/CM)	(IN/LBS)
1	-----	1/4" Retention Nose Piece	20-25	17-21
2	43-56-2553	Outer Jaw Housing	30-35	26-30
7	-----	Inner Jaw Housing	140-150	121-130
9	05-78-5315	Front Gear Case	22-26	19-22
23	45-76-0853	Mandrel Guide	90-100	78-86
26	06-82-0151	Threaded Insert Cover	4-6	3-5
35	06-82-0079	Right Housing Halve	8-10	7-8
36	06-82-1080	Right Housing Halve	8-10	7-8
39	-----	Anti-Rotation Plate	3-4.5	2-4
72	06-82-2500	Belt Hook	12-16	10-14
74	05-81-1100	Coin Cell Cover	1.5-3.8	1-3
32	-----	3/16" Retention Nose Piece	5-7	4-6
33	-----	9/32" Retention Nose Piece	5-7	4-6
34	-----	7/32" Retention Nose Piece	5-7	4-6

2660-20 ACCESSORIES

49-16-2660B	M18 FUEL™ 1/4" Blind Rivet Tool w/ ONE-KEY™ Protective Boot
49-16-2660RP	M18 FUEL™ 1/4" Blind Rivet Tool w/ ONE-KEY™ Retention Nose Piece 4-Pack
49-16-2660NR	M18 FUEL™ 1/4" Blind Rivet Tool w/ ONE-KEY™ Non-Retention Nose Piece 4-Pack
49-16-2660EXT	M18 FUEL™ 1/4" Blind Rivet Tool w/ ONE-KEY™ 6" Extension
49-16-2660JS	M18 FUEL™ 1/4" Blind Rivet Tool w/ ONE-KEY™ Jaw Set
42-55-2743	Contractor Bag



As an aid to reassembly, take notice of wire routings and position in wire guides and traps while dismantling tool.

Be sure that all components of the electronics assembly are seated firmly and squarely in housing recesses.

Avoid pinched wires, be sure that all wires and sleeves are pressed completely down in wire traps.

Prior to securing housing cover onto the housing support, be sure that there are no interferences.

Before installing the battery, check for proper functionality of shuttles and triggers.

Install battery and depress switch trigger to assure tool is operating properly.

