

For Models:

**13511, 13512, 13515
13516, 13517, 13518
13519, 13520, 13531**

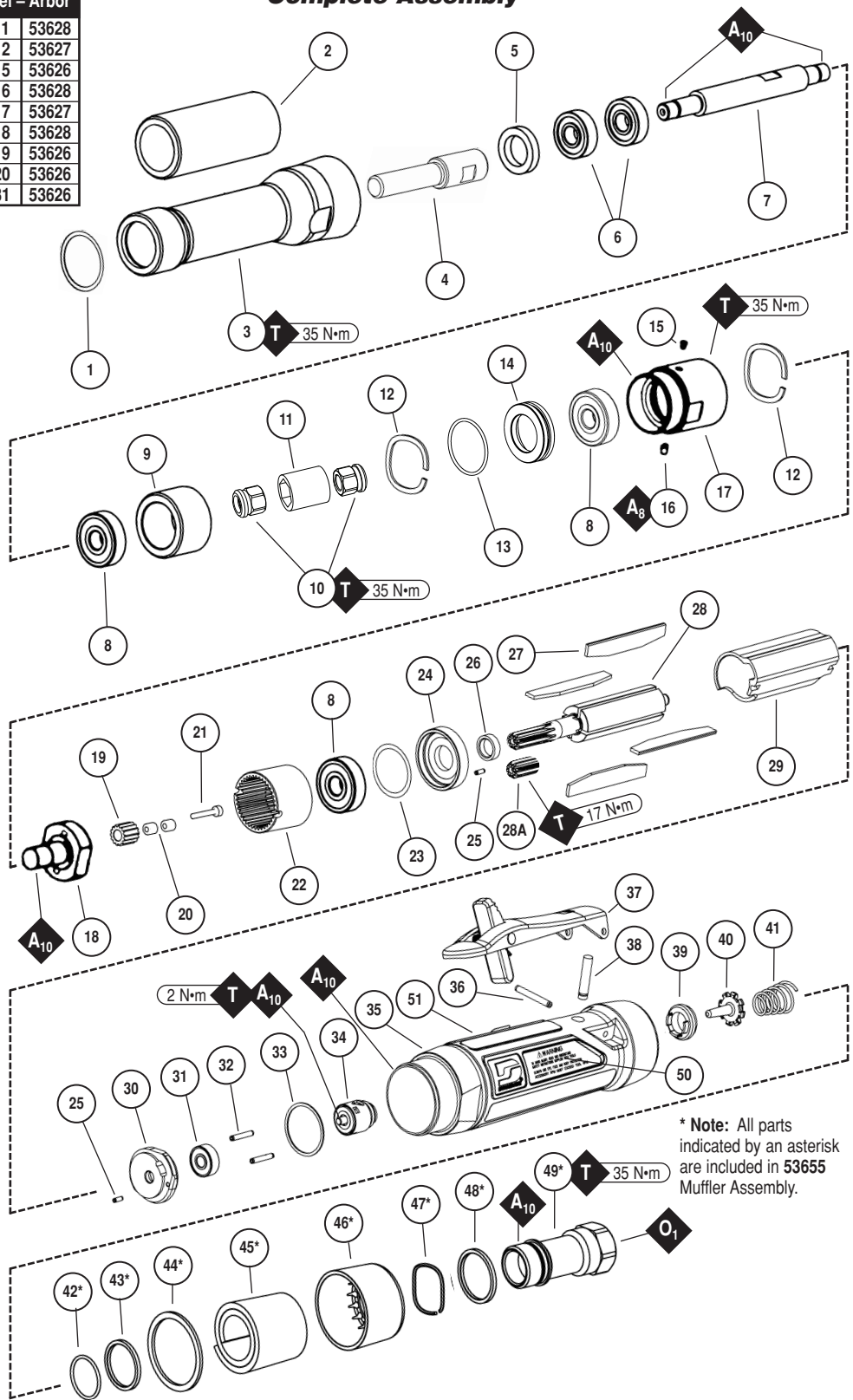
1hp Extension Dynastraight

Complete Assembly

Model - Arbor	
13511	53628
13512	53627
13515	53626
13516	53628
13517	53627
13518	53628
13519	53626
13520	53626
13531	53626

Index Key

No.	Part #	Description
1	96524	Retaining Ring
2	53690	Grip
3	51952	Extension Handle
4	Arbor	(See Chart)
5	51956	Felt Seal
6	01007	Bearing (2)
7	51955	Spindle Extension
8	54520	Bearing (3)
9	51982	Spacer
10	51969	Coupling Nut (2)
11	50902	Coupler
12	96498	Wave Spring (2)
13	95438	O-Ring
14	53620	Adapter
15	01041	Grease Fitting
16	04014	Set Screw
17	53695	Adapter
18	Carrier	
	53676	1,800 & 3,400 RPM
	53669	4,500 RPM
	53668	6,000 RPM
19	Planetary Gears	
	53193	1,800 & 3,400 RPM
	53195	4,500 RPM
	53661	6,000 RPM
20	04026	Needle Bearing (4)
	96528	Bearing (3) 6,000 RPM Only
21	53679	Shaft (2) (Qty. 3 for 6,000 RPM)
22	Ring Gear	
	53665	1,800, 3,400, 4,500 RPM
	53663	6,000 RPM
23	51951	Shim Pack (3/pkg.)
24	51922	Front Bearing Plate
25	96441	Pin (2)
26	51927	Spacer
27	51926	Blade (4/pkg.)
28A	53660	Pinion (6,000 RPM Only)
28	Rotor	
	53667	1,800 & 3,400 RPM
	53666	4,500 RPM
	53680	6,000 RPM
29	51925	Cylinder
30	51923	Rear Bearing Plate
31	02057	Bearing
32	96445	Pin (2)
33	51924	Gasket
34	Governor Assembly	
	51953	1,800 RPM
	51933	3,400, 4,500, 6,000 RPM
35	All Housings Include:	
	Warning & Specification Labels	
	53711	Housing - Model 13511
	53712	Housing - Model 13512
	53715	Housing - Model 13515
	53716	Housing - Model 13516
	53717	Housing - Model 13517
	53718	Housing - Model 13518
	53719	Housing - Model 13519
	53796	Housing - Model 13520
	53794	Housing - Model 13531
36	96444	Pin
37	51949	Safety Lock Lever
38	51946	Valve Stem Assembly (Incl. 96443 O-Ring)
39	51945	Valve Seat
40	51944	Tip Valve
41	51943	Spring
42*	96442	O-Ring
43*	51940	Spacer
44*	53682	Gasket
45*	94528	Felt Silencer
46*	53686	Muffler Cap
47*	94924	Wave Spring
48*	53683	Spacer
49*	53681	Inlet Bushing (Incl. 2 - 51938 Screens)
50	01180	Warning Label
51	01181	Specification Label



* Note: All parts indicated by an asterisk are included in 53655 Muffler Assembly.

*Included in 53655 Muffler Assembly

Always follow adhesive manufacturers cleaning and priming recommendations.

KEY	
O	Oil: O ₁ = Air Lube
A	Adhesive: A ₈ = Loctite #567 A ₁₀ = Loctite #243
T	Torque: N·m x 8.85 = In. - lbs.
G	Grease: G ₁ = Lubriplate 630 AA