

NerveSpa

Nerve and Neuropathy
Relief Science

PRODUCT CATALOG

NerveSpa

NerveSpa

Nerve & Neuropathy Innovations Charted by Clinical Research

NerveSpa is a Manufacturer of Advanced Non-Invasive, Non-Narcotic, Modalities Specializing in Treating Early to Mid-Stage Neuropathy and other Nerve based Pain Conditions. NerveSpa has over 24 years of experience in developing innovative and effective technology that provides pain relief while promoting regeneration and healing of the root cause.

- 1 Private Labeling Program Capabilities
- 2 Attentive Customer Service and Warranty Processing
- 3 Fast Shipping and Prompt Delivery

NerveSpa

2023/2024 PRODUCT OFFERINGS



Metabolic & Weight Control



Nerve & Neuropathy



Joint & Mobility



NerveSpa

NERVE SPA PRO - NERVE BATH
10 DAY SUPPLY PROGRAM

The Nerve Spa is an Advanced Neuropathy stimulator that utilizes enhanced micro-current specifications coupled with a monophasic wave form to target pain associated with early onset peripheral neuropathy in the hands and feet.

The system is designed to deliver an aquatic electrotherapy stimulation that surrounds the feet with a uniform level of current.

PRODUCT CODE: **NSFB100**



NerveSpa

NERVE SPA PRO - NERVE BATH
60 DAY SUPPLY PROGRAM

The Nerve Spa is an Advanced Neuropathy stimulator that utilizes enhanced micro-current specifications coupled with a monophasic wave form to target pain associated with early onset peripheral neuropathy in the hands and feet.

The system is designed to deliver an aquatic electrotherapy stimulation that surrounds the feet with a uniform level of current.

PRODUCT CODE: **NSFBPRO**



NerveSpa

NERVE SPA PRO - NERVE BATH
90 DAY SUPPLY PROGRAM

The Nerve Spa is an Advanced Neuropathy stimulator that utilizes enhanced micro-current specifications coupled with a monophasic wave form to target pain associated with early onset peripheral neuropathy in the hands and feet.

The system is designed to deliver an aquatic electrotherapy stimulation that surrounds the feet with a uniform level of current.

PRODUCT CODE: **NSFBPRO90**



NerveSpa

FOOT PADS

Nerve Spa Foot Pads - 1 pair - For use with the Nerve Spa Nerve Bath

- High Concentration Silver Conductive yarn
- Provides Bilateral Stimulation to the feet using the Nerve Spa Device
- Lightweight and Portable
- One size fits all
- Effectively stimulate whole foot

PRODUCT CODE: **NSFP2**





NerveWave

NERVE WAVE BY NERVE SPA - CLINICAL NERVE SPA MULTI-MODALITY TREATMENT DEVICE

NERVE WAVE BY NERVE SPA - CLINICAL NERVE SPA MULTI-MODALITY TREATMENT DEVICE - includes regenerative programs specializing in Intractable Back Pain & Joint, Nerve & Neuropathy, Muscular Degeneration, and Vegas Nerve Stimulation. Also offers a full suite of clinical grade electrotherapy modalities such as TENS, EMS, IFC, Galvanic, Russian Stim, and Microcurrent

PRODUCT CODES: **NWNSC**



NerveSpa

16OZ SALT/4 TUBES OF TABLETS

PRODUCT CODE: **SPLYKIT**



STRETCH by NerveSpa

PERFORMANCE DIABETIC SOCK
Not until now, has there been a high quality diabetic sock.

PRODUCT CODES:

Small: **SDSK**

Large: **SDSKL**

Fits Shoe Sizes:

sm/md – **6 to 9**

LG/XL – **9 to 13**



NERVE BEAM

NERVE BEAM COLD LASER

The Nerve Beam Cold Laser uses highly concentrated lasers provide energy and nutrients to heal damaged nerves and improve blood flow. The laser uses two different wavelengths, reaching multiple layers of tissue to work on a cellular level in order to effectively reduce pain and inflammation.

PRODUCT CODE: **NBCL36**



NERVE BEAM

NERVE BEAM LED THERAPY WRAP

delivers intense light energy into the body for a drug-free, non-invasive treatment. The wrap utilizes two different forms of light therapy across a dense plane of LED diodes. The red light is able to treat topical pain and reduce inflammation, while the invisible infrared light is used to penetrate deeper tissue and promote regeneration in the nerves.

PRODUCT CODE: **NBRT175**



QUAKE PLATE

VIBRATION PLATE

Delivers a powerful clinical grade vibrational massage to help relax and relieve pain associated with ones sore and achy feet. Thirty individual speed settings drive up to 4,000 RPM's of powerful energy deep into the tissue.

PRODUCT CODE: **VPLATE10**



NerveSpa

THE NERVE SPA VIBE

BY NERVE SPA

DEEP TISSUE VIBRATIONAL MASSAGER

The Nerve Spa Vibe is a compact yet powerful deep tissue massager designed to deliver effective relief from muscle tension, chronic pain, and fatigue. With a high-speed vibration range of 5500–7500 RPM, it penetrates deep into soft tissues to promote circulation and ease stiffness. Its five interchangeable heads allow for personalized therapy across different muscle groups and sensitive areas, making it ideal for managing conditions like sciatica, arthritis, and plantar fasciitis. Lightweight, cordless, and easy to operate, it's perfect for both personal wellness and professional use—whether you're an athlete, therapist, or simply someone seeking daily relief.

PRODUCT CODES: **NSVIBE**



NerveSpa Knee Pro

NERVE SPA KNEE PRO – WITH JSTIM TECHNOLOGY

The Nerve Spa Knee is based off of a clinically proven, non-invasive, non-drug treatment option for Osteoarthritis(OA) of the knee. The Nerve Spa knee system delivers a proprietary electrical signal that stimulates the joint tissue to reduce the pain and Symptoms of Osteoarthritis and Rheumatoid Arthritis, and helps maintain the overall health of the knee joint.

PRODUCT CODE - NerveSpa Knee Pro plus 90 day supply kit:
NSKNEE90

PRODUCT CODE - NerveSpa Knee Pro plus 180 day supply kit:
NSKNEE180



NerveSpa Shoulder Pro

NERVE SPA SHOULDER PRO - ADVANCED SHOULDER JOINT TREATMENT DEVICE

Noninvasive treatment for shoulder joint conditions such as arthritis, tendonitis, bursitis. Reduces pain and other symptoms associated with shoulder pain conditions. Improves function; Adjunctively Supports the results of stem cell injections Based on Clinically proven technology – and powered by Jstim programming. Plug and play program - Mode 1 – Monophasic Spike wave with 7.83Hz (Nerve Spa Programming), Mode-2 – Monophasic Pulse with high Volt Galvanic Wave. (Jstim Programming). Includes – 3 packs of Bicep pads and 3 packs of shoulder pads. Size: Fits Small to X-Large (extender straps needed for XXXL)

PRODUCT CODE: **NSSPRO**

THE POWER WRAP

THE POWER WRAP - ULTRA-HIGH POWERED LED COLD LASER

FAR MORE EFFECTIVE- No other device is equipped with the combinational power of both lasers and LED's. 78 Lasers and 192LEDS deliver 12,000mW of raw power.

UNIQUE DESIGN: The Power Wrap solves the age-old problem with laser modalities, surface coverage. The Power Wrap has been designed to package the same cold laser power across a wrappable surface area. Capable of treating shoulders, feet, back, hips, knees and neck.

PRODUCT CODE: **NBPW**





NerveSpa

NERVE REBUILDER FORMULA

BY NERVE SPA

PERIPHERAL NEUROPATHY SUPPLEMENT

Manage pain, inflammation and the loss of sensation due to peripheral neuropathy. Consisting of a blend of amino acids, nutrients, and botanicals that work in concert to increase and restore balance in the nervous system.

- 2 capsules per serving
- 120 capsules per bottle

PRODUCT CODES: **NRB100**



NerveSpa

NERVE REGENERATION FORMULA - PERIPHERAL NEUROPATHY SUPPLEMENT

BY NERVE SPA

PERIPHERAL NEUROPATHY SUPPLEMENT

Peripheral nerve integrity depends on mitochondrial ATP generation, balanced redox signaling, and regulated metabolic pathways—physiological domains frequently influenced in neuropathy-related contexts. Clinicians managing peripheral nerve stress commonly encounter manifestations such as altered sensation, nerve conduction slowing, and metabolic dysregulation. The Nerve Regeneration Formula is a clinician-developed formulation designed for daily use to reinforce these convergent biological pathways using well-studied nutrient cofactors.*

PRODUCT CODES: **NRF100**

Blood Flow Super Formula

SUPER BLOOD FLOW - NEUROPATHY DRINK POWDER



PRODUCT CODE:
NERVESPADRINKPOWDER

Nerve & Neuropathy Cream

A high-concentrated L-arginine, Vitamin B and menthol based cream designed for sufferers of peripheral neuropathy and other nerve related conditions that cause pain or numbness in one's extremities. L-arginine absorbs into the body quickly and converts into nitric oxide to help relax the muscles and increase circulation throughout the body, while the menthol helps to further relieve neuropathic pain.

PRODUCT CODES: **NNC10**



N1 NERVE AND NEUROPATHY SUPPORT ODF
(ORAL DISSOLVABLE FILM)

Korean Red Ginseng is good for Enhancement of Immune & Recovery of Fatigue. As well as improve ones memory function and concentration. Improve circulation, Support the Nervous System, Boost Immunity, energy, and enhance bodily processes.
Recommended use:(1 ODF per Day)

PRODUCT CODE: **N1NN**



ImmunoGut Super Formula by NerveSpa

IMMUNOGUT SUPER FORMULA - HEAL AND SEAL DRINK POWDER - 60 SERVINGS

Gastrointestinal barrier integrity depends on coordinated epithelial repair, mucosal structural support, microbiome balance, and regulated inflammatory signaling— physiological domains frequently linked to altered intestinal permeability and digestive dysfunction.

PRODUCT CODE: **IGHS60**



ImmunoGut Super Formula by NerveSpa

IMMUNOGUT SUPER FORMULA

Experience the transformative potential of ImmunoGut Super Formula, a potent blend meticulously crafted to fortify your immune system and optimize gut health. Unlock the power of ImmunoGut Super Formula, a meticulously crafted blend engineered to fortify your immune system and enhance gut health.

PRODUCT CODE: **IGSF60**



N1 WEIGHT CONTROL ODF (ORAL DISSOLVABLE FILM)

Support Glucose Metabolism and the movement of glucose into cells. Protect against oxidative stress in high glucose environment. Recommended use:(1 ODF per Day).
Gluten free - Soy free - Non-gmo - Dairy free

PRODUCT CODE: **N1WC**



N1 GUT SUPPORT WITH PROBIOTICS ODF (ORAL DISSOLVABLE FILM)

Aid in the digestion process, breaking down food and extracting their nutrients. Improve Digestion, Foundational Probiotics, Improve Nutrient Absorption, Improve gut health. Recommended use:(1 ODF per Day). Gluten free - Soy free - Non-gmo - Dairy free

PRODUCT CODE: **N1GS**

Super Flex Joint Formula

SUPER FLEX - JOINT FORMULA DRINK POWDER



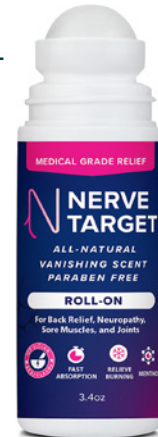
PRODUCT CODE: **SFJF100**

N NERVE TARGET

NERVE TARGET - ROLL-ON

Nerve Target is an all-natural blend of ingredients designed as a post-treatment therapy enhancement for our light therapy products, lasers, and nerve stimulation devices. Our all-natural formula includes key ingredients that work to treat the joint, and relax the nerves. Such as Magnesium, Glucosamine, and Arnica.

PRODUCT CODE: **NTROLL**



JOINT + MOBILITY
ADVANCED SUPPLEMENTATION

OSTEOARTHRITIS AND RHEUMATOID ARTHRITIS CREAM

- Maximum Strength & Soothing Relief & Joint Health
- 2.82 OZ
- Fast Absorption
- Increase Joint Flexibility
- Build Cartilage
- 1G of Glucosamine

PRODUCT CODE: **OAC10**



JOINT + MOBILITY
ADVANCED SUPPLEMENTATION



N1 ALL-NATURAL SLEEP SUPPORT FORMULA - ODF (ORAL DISSOLVABLE FILM)

Restorative sleep depends on coordinated circadian rhythm signaling, neurotransmitter balance, neuromuscular relaxation, and regulated stress response. Disruption of these systems may contribute to difficulty initiating sleep, fragmented cycles, and non-restorative rest.

PRODUCT CODE: **N1SS**

SLEEP
ADVANCED SUPPLEMENTATION



N1 - MILK THISTLE EXTRACT 600MG



N1 - BLESSED THISTLE EXTRACT (CNICUS BENEDICTUS DRIED LEAF - 670MG)



NERVE WAVE 2.5" RD CLINICAL GRADE ELECTRODE

- Pre-wired Pigtail connection Lead wire
- High Grade Gel for Clinical Grade Power
- Made in Taiwan

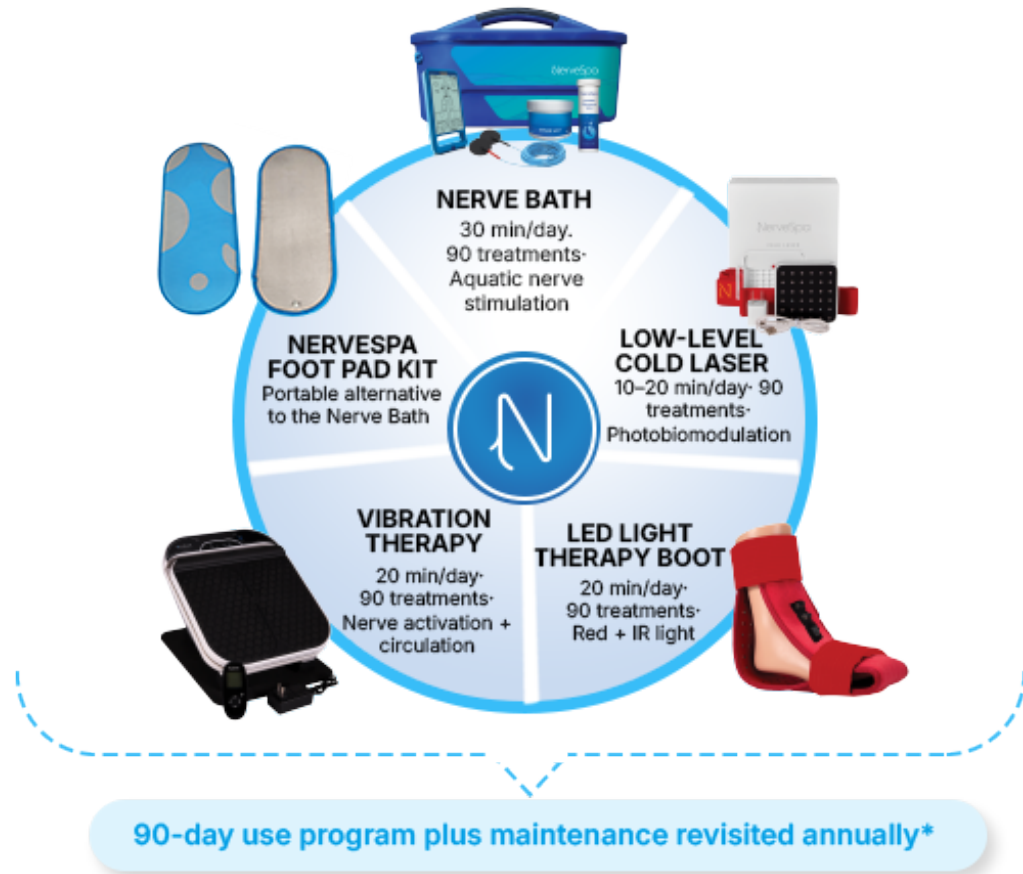
PRODUCT CODE: **NW25RD**



STAND - ROLLING CART FOR NERVEWAVE - WHITE

- Includes Basket to hold accessories
- Built-in Wire management channels
- Adjustable Height
- Locking caster wheels

PRODUCT CODE: **RCN**



Nerve & Neuropathy - Device Protocol

Phase 1 — Active Treatment Cycle (Initial 90-use program)

Patients follow a structured daily routine using the therapies shown in the protocol wheel. Most modalities are used approximately 20-30 minutes per day, targeting about 90 total uses per modality.

Phase 2 — Maintenance & Ongoing Support




After completing the initial treatment cycle, providers typically transition patients to a maintenance schedule based on symptom stability and clinical response.

Frequency and modality selection may be adjusted to support long-term nerve comfort and function.

Phase 3 — Reinforcement Cycle

Repeat Phase 1 and Phase 2 annually to reinforce the program results and keep any nerves in the state of degradation in an active state of progressive improvement. Treatment schedules and supplement use are directed by the provider.

Phase 1

		
Nerve Regeneration Acetyl-L-Carnitine	Nerve ODF Neuroprotective	Blessed Thistle Nutrient Support
1 scoop/day	ODF/day	1-3 drops/day

3-4 - month nerve regeneration period revisiting annually*

Phase 2

			
Blood Flow Circulation support	Nerve Rebuilder ALA nerve support	Milk Thistle Cellular Protection	Nerve & Neuropathy Cream Cooling topical
1 scoop/day	2 capsules/day	1-3 drops/day	As needed

Continual use with break cycle*

Nerve & Neuropathy - Supplement Protocol

Phase 1: Nerve Regeneration — Targeted daily supplementation is used during the initial 3-4 month period and then revisited annually for 3-4 months of use. Start the program at the onset of treatment.

Phase 2: Neuro Protection Phase — Continued long-term supplementation is recommended to support circulation and ongoing nerve health. Start the program at the onset of treatment.

*Note: Break-Cycle Guidance below

Joint & Mobility - Device Protocol

Phase 1 - Consistent Treatment Cycle (1-hour per day 5X/week - 6-12 months)

Patients complete a structured program targeting approximately 120 total sessions, typically performed 1 hour per day, about 5x per week. Results are driven by the cumulative therapeutic exposure and regenerative nature of the stim.

Consistency across the full program is the key driver of optimal outcomes.

Phase 1 - Maintenance Phase - Intermittent Treatment Cycle (1-hour per day - on an as-needed basis)

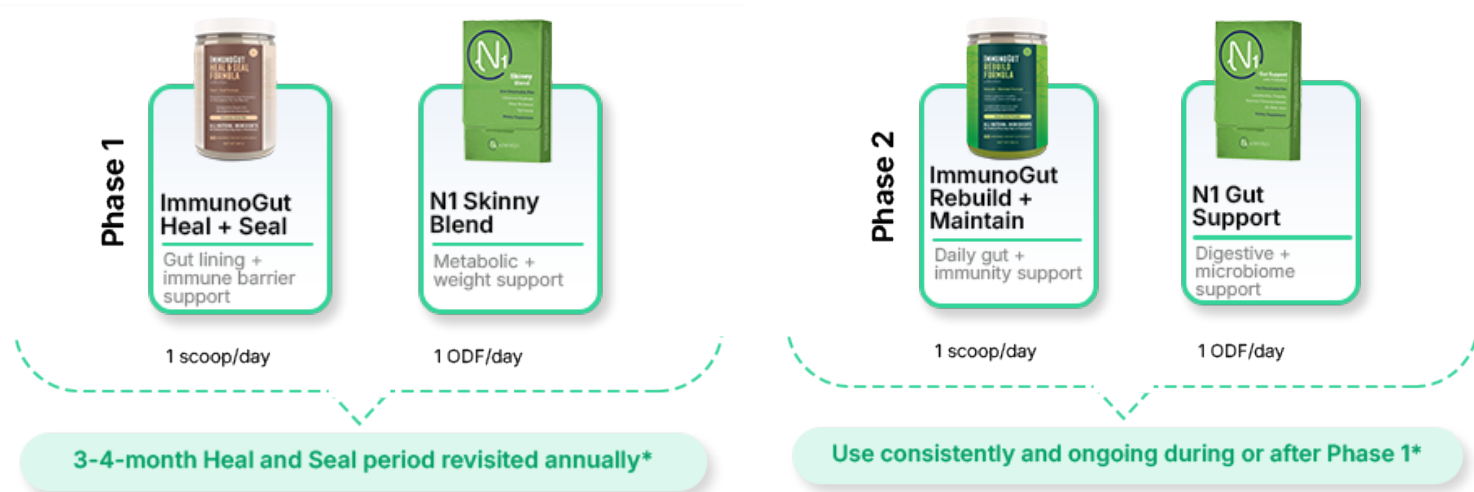
After the treatment milestone is reached, providers may transition patients to a reduced maintenance schedule based on clinical response, symptom stability, and long-term joint goals.



Joint & Mobility - Supplement Protocol

Targeted joint supplementation is recommended for daily use as part of the overall care plan. Many patients continue supplementation long-term under provider guidance.





Immunity & Gut - Supplement Protocol

Phase 1 — Heal & Seal

Daily supplementation focuses on supporting the gut barrier, microbial balance, and systemic inflammatory regulation. This phase establishes the foundation for digestion, absorption, and immune response.

Phase 2 — Rebuild & Maintain

Continued daily supplementation supports long-term microbiome stability, metabolic regulation, and immune resilience.

Duration and dosing are determined by the provider.



[NERVESPA.COM](https://www.nervespa.com)

[PAINTECHNOLOGY.COM](https://www.paintechnology.com)

SUPPORT@NERVESPA.COM

1.800.239.7880

NerveSpa