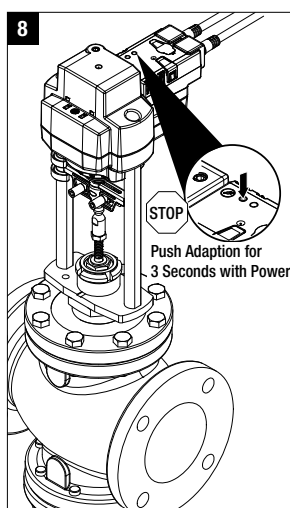
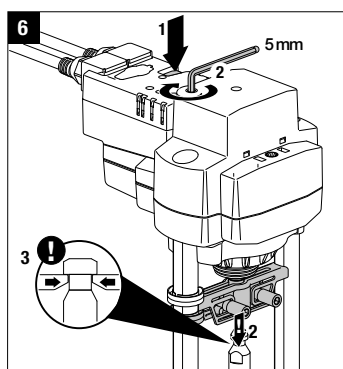
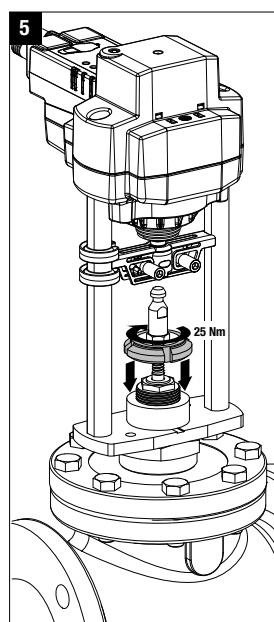
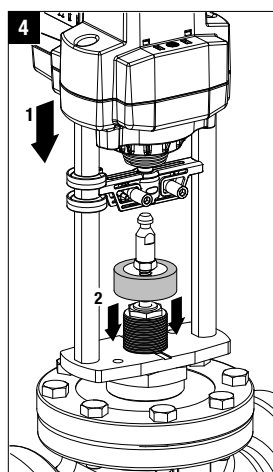
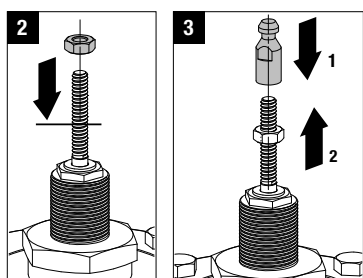
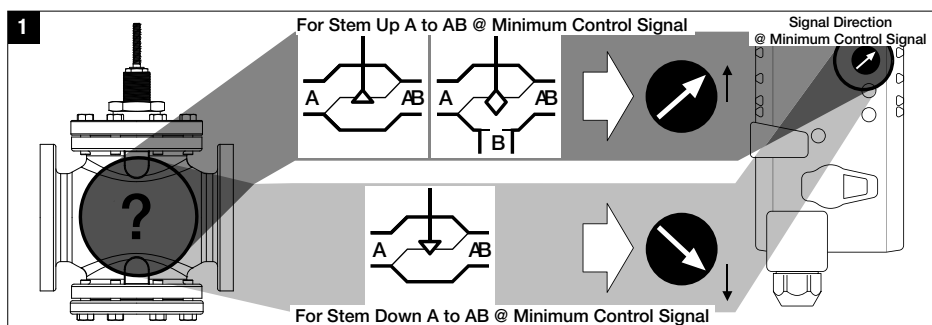
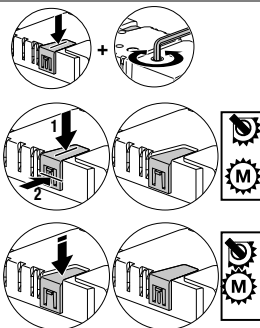


QUICK MOUNT VISUAL INSTRUCTION MANUAL

WGVL/G6/G7 Linkage with RV Series Actuators



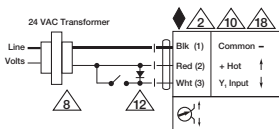
Optional Lock and Manual Override



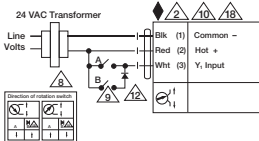
WGV L/G6/G7 Linkage with RV Series Actuators

WIRING DIAGRAMS

Non-Spring Return Actuator with -3



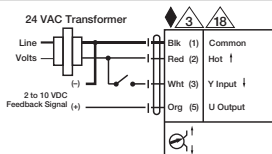
On/Off



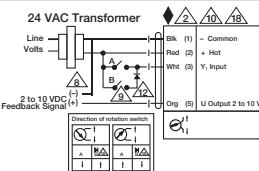
Floating Point

Signal
Direction

Non-Spring Return Actuator with MFT



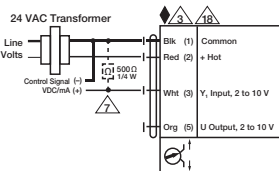
On/Off



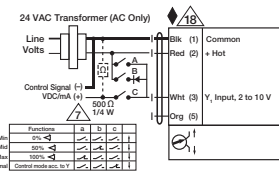
Floating Point

Notes:

- ◆ Meets cULus requirements without the need of an electrical ground connection
- Ⓐ Actuators with appliance cables are numbered.
- ⚠ Actuators may be connected in parallel. Power consumption and input impedance must be observed.
- ⚠ Actuators may also be powered by 24 VDC.
- ⚠ Only common actuator can be neg. (-) to ground circuit.
- ⚠ A 500 Ω resistor converts the 4 to 20 mA control signal to 2 to 10 VDC.
- ⚠ Control signal may be pulsed from either the Hot (Source) or Common (Sink) 24 VAC line.
- ⚠ Control closures A & B also can be triacs. A & B should both be closed for the triac source and open for triac sink.
- ⚠ For triac sink the Common connection from the actuator must be connected to the Hot connection of the triac. Feedback feedback cannot be used with a triac sink controller. The actuator internal common reference is not compatible.
- ⚠ IN4004 or IN4007 diode. (IN4007 supplied, Belimo Part number 410555)
- ⚠ Actuators with plenum rated cable do not have number on wires: use color codes instead.

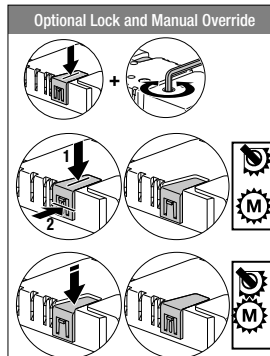
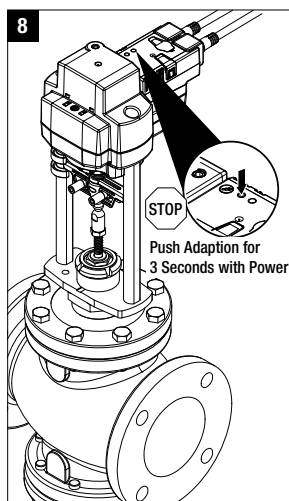
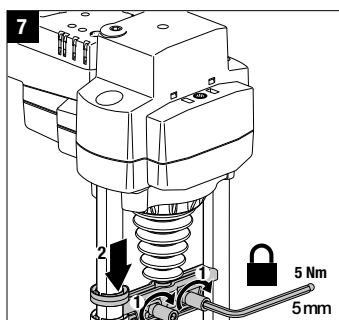
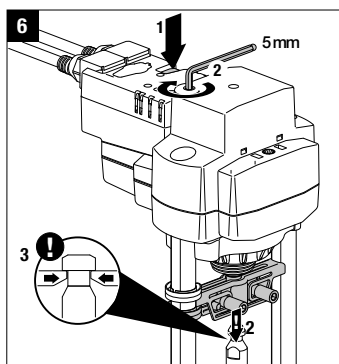
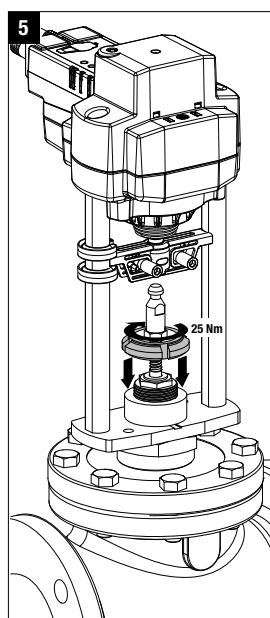
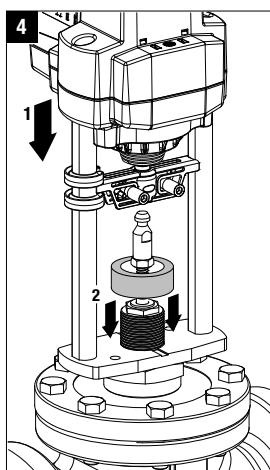
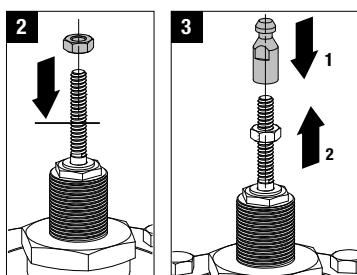
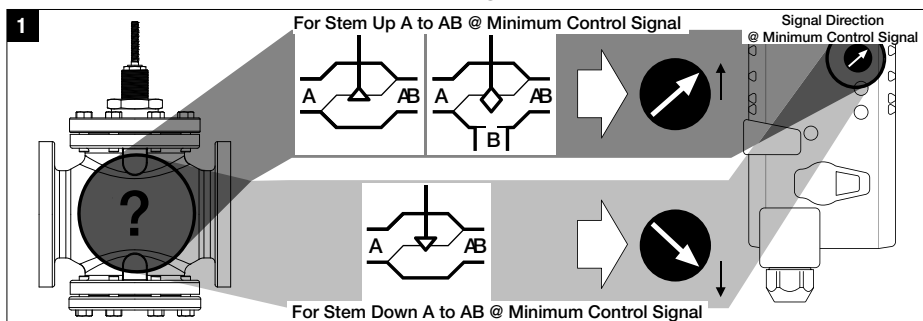


VDC / 4 to 20 mA



Override Control Min. Mid. Max Postions

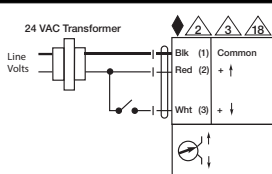
WHT	PNK	ORG	BLU	BRN
White	Pink	Orange	Blue	Brown
Blanco	Rosado	Anaranjado	Azul	Marron
Blanc	Rosa	Orange	Bleu	Brun
Blanco	Cor-de rosa	Alaranjado	Azul	Marron



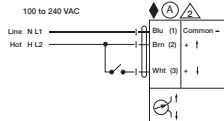
WGVL/G6/G7 Linkage with EV Series Actuators

WIRING DIAGRAMS

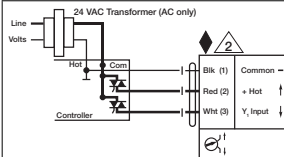
Non-Spring Return Actuator with -3



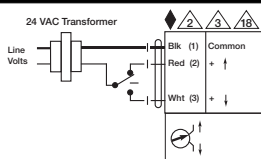
On/Off



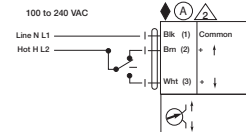
On/Off



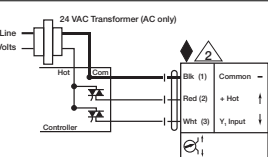
Triac Sink



Floating Point

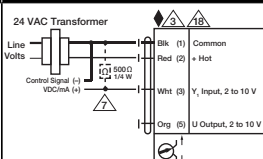


Floating Point



Triac Source

Non-Spring Return Actuator with -SR

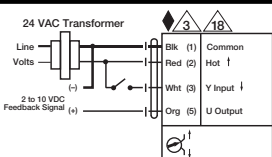


VDC / 4 to 20 mA

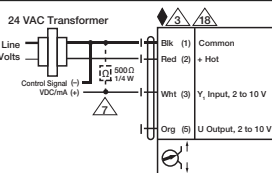


Selector Switches

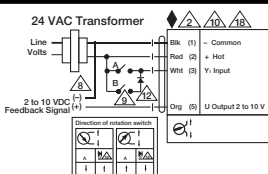
Non-Spring Return Actuator with MFT



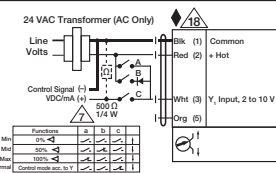
On/Off



VDC / 4 to 20 mA



Floating Point



Override Control Min. Mid. Max Postions

Notes:

- ◆ Meets cULus requirements without the need of an electrical ground connection
- Ⓐ Actuators with appliance cables are numbered.
- ⚠ Actuators may be connected in parallel. Power consumption and input impedance must be observed.
- ⚠ Actuators must also be powered by 24 VDC.
- ⚠ Only connect common to neg. (-) leg of control circuits.
- ⚠ A 500 Ω resistor converts the 4 to 20 mA control signal to 2 to 10 VDC.
- ⚠ Control signal may be pulsed from either the Hot (Source) or Common (Sink) 24 VAC line.
- ⚠ Contact closures A & B also can be triacs. A & B should both be closed for the triac source and open for triac sink.
- ⚠ For triac sink the Hot connection from the actuator must be connected to the Hot connection of the control system feedback cannot be used with a triac sink controller. The actuator internal common reference is not compatible.
- ⚠ IN4004 or IN4007 diode. (IN4007 supplied, Belimo Part number 40155)
- ⚠ Actuators with plenum rated cable do not have numbers on wires; use color codes instead.

BRN
Brown
Marron
Brun
Marrom

BLU
Blue
Azul
Bleu
Azul

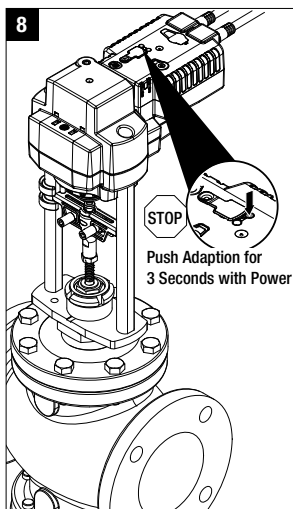
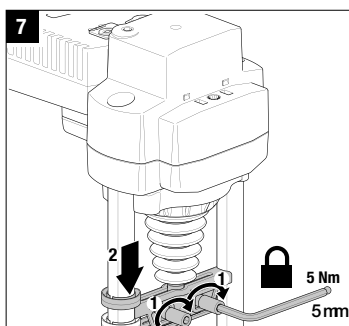
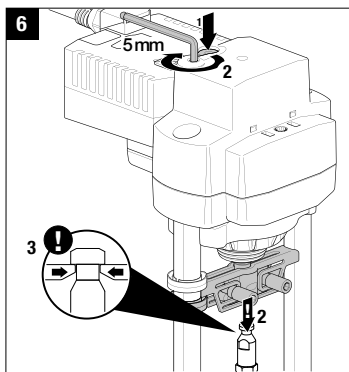
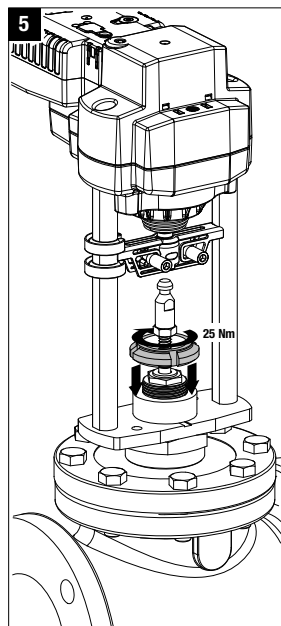
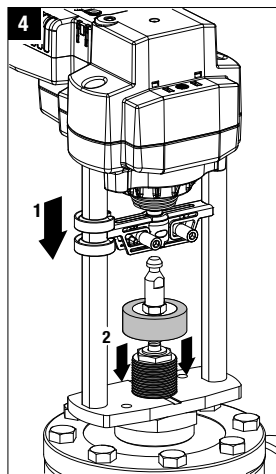
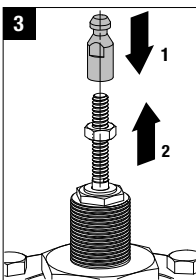
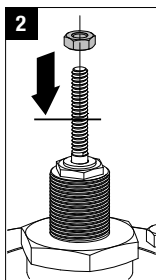
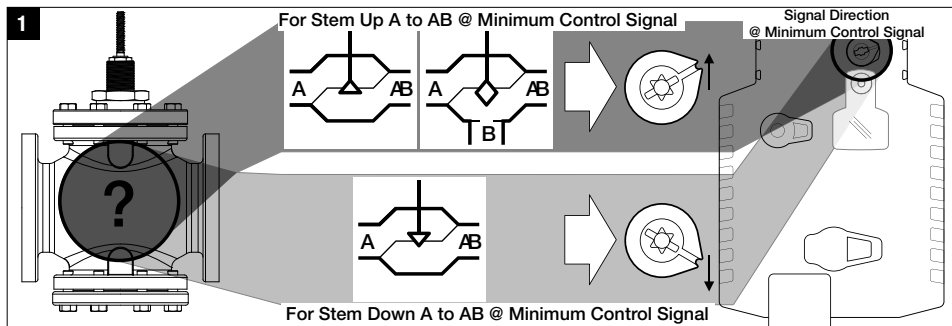
DRG
range
ranjadd
range
ranjadd

PNK
Pink
Rosado
Rosa
Color-de ros

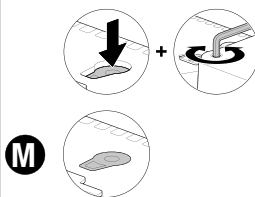
WHT
White
Blanco
Blanc
Branco

RED
Red
Rojo
Rouge
Vermelho

BLK
Black
Negro
Noir
Preta



Optional Manual Override



WGVL/G6/G7 Linkage with AVK Series Actuators

WIRING DIAGRAMS

Electronic Fail-Safe Actuator with -3								
<p>On/Off</p>	<p>Floating Point</p>							
<p>On/Off</p>	<p>Floating Point</p>	<p>Selector Switches</p>						
<p>Triac Sink</p>	<p>Triac Source</p>	<p>Triac Sink with Separate Transformer</p>						
Electronic Fail-Safe Actuator with MFT			Notes: <ul style="list-style-type: none"> Meets cULus requirements without the need of an electrical ground connection Actuators with appliance cables are numbered. Actuators may be connected in parallel. Power consumption and input impedance must be observed. Actuators may also be powered by 24 VDC. Only connect common to neg. (-) leg of control circuits. A 500 Ω resistor converts the 4 to 20 mA control signal to 2 to 10 VDC. Control signal may be pulsed from either the Hot (Source) or Common (Sink) 24 VAC line. Contact closures A & B also can be triacs. A & B should both be closed for the triac source and open for triac sink. For triac sink the Common connection from the actuator must be connected to the Hot connection of the controller. Position feedback cannot be used with a triac sink controller. The actuator internal common reference is not compatible. IN4004 or IN4007 diode. (IN4007 supplied, Belimo Part number 40153) Actuators with plenum rated cable do not have numbers on wires; use color codes instead. 					
<p>On/Off</p>	<p>Floating Point</p>							
<p>VDC / 4 to 20 mA</p>	<p>Override Control Min, Mid, Max Positions</p>							

- BRN Brown
- BLU Blue
- ORG Orange
- PRK Pink
- WHT White
- RED Red
- BLK Black
- BRN Brown
- BLU Blue
- ORG Orange
- PRK Pink
- WHT White
- RED Red
- BLK Black
- BRN Brown
- BLU Blue
- ORG Orange
- PRK Pink
- WHT White
- RED Red
- BLK Black

RETRO FIT[®]



Belimo Americas

USA, Latin America, and the Caribbean: www.belimo.us

Canada: www.belimo.ca

Brazil: www.belimo.com.br

Belimo Worldwide: www.belimo.com