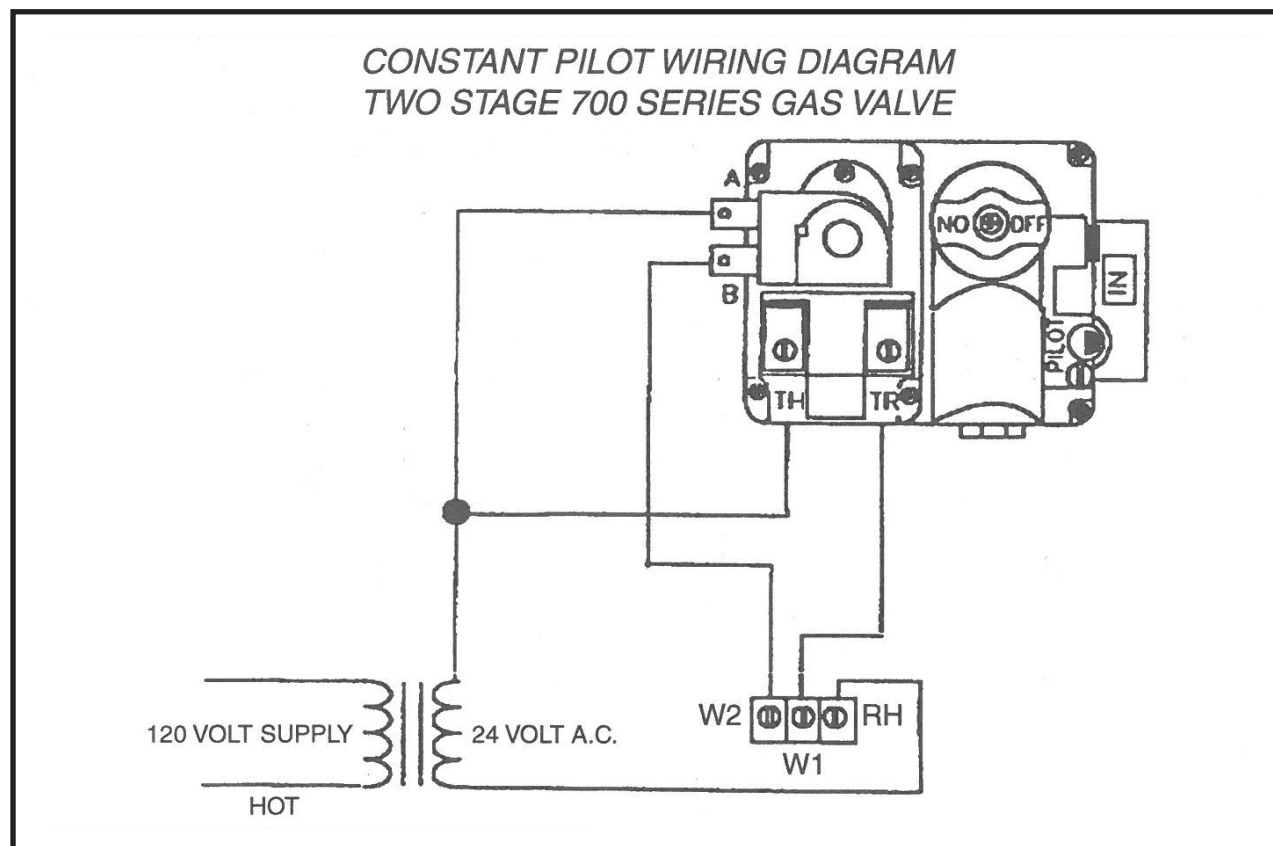




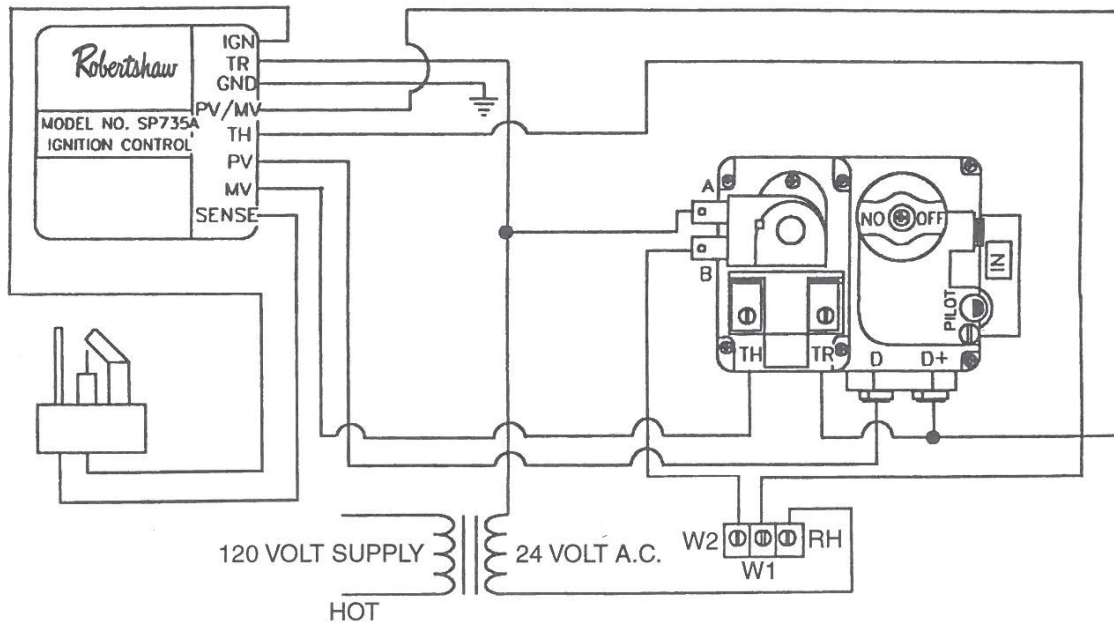
INSTALLATION DATA
700 & 720 SERIES
TWO STAGE GAS VALVES
WIRING DIAGRAMS



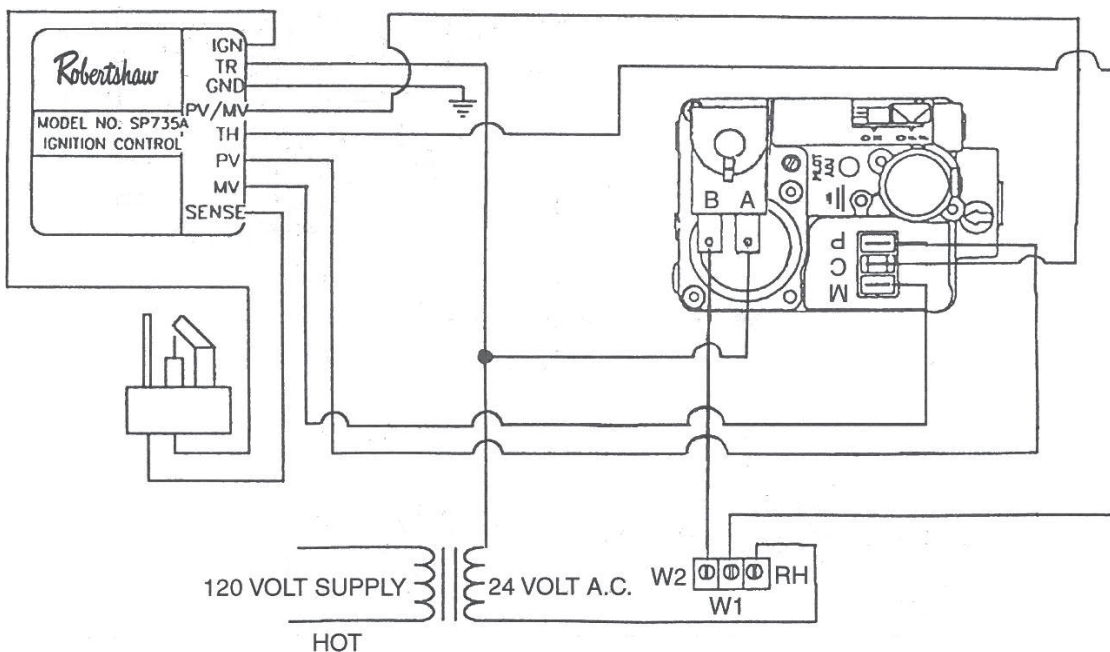
INTERMITTENT PILOT IGNITION WIRING DIAGRAM TWO STAGE 700 SERIES GAS VALVE

NOTE:

If the replacement unit has a "slow opener" feature it will be indicated in the factory model number by -S7A, -S7B or -S7C. Example: 7000BER-S7C. If original **DID NOT** have a slow opening feature and after installation of replacement control you encounter ignition problems, the "slow opener" can be removed. See page 4 of the installation data sheet.

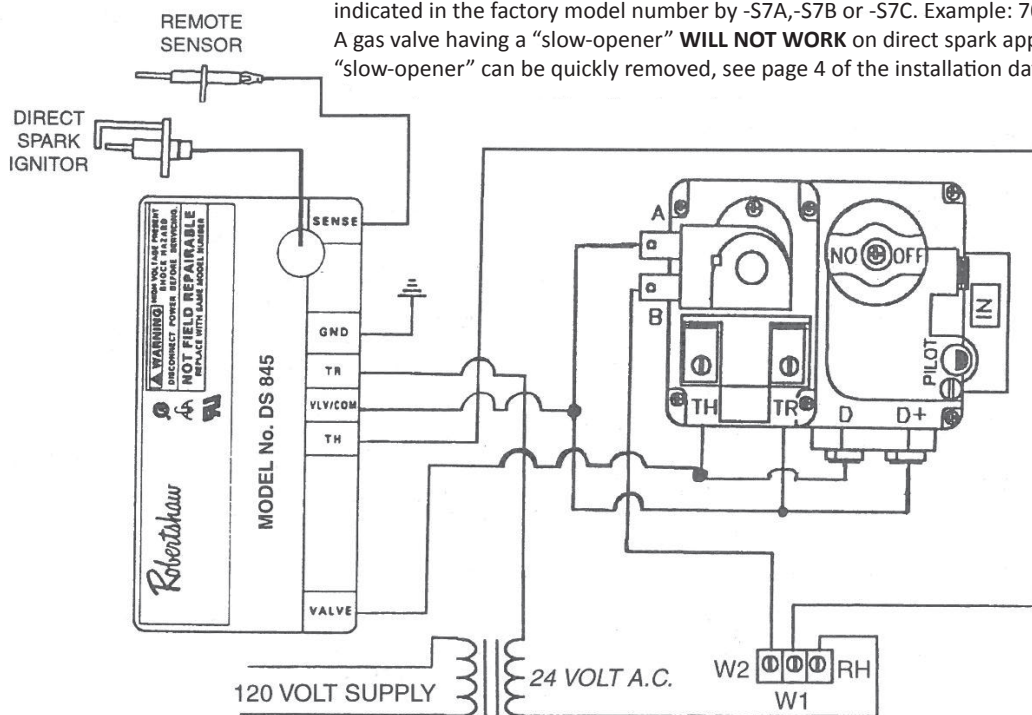


INTERMITTENT PILOT IGNITION WIRING DIAGRAM TWO STAGE 720 SERIES GAS VALVE



NOTE:

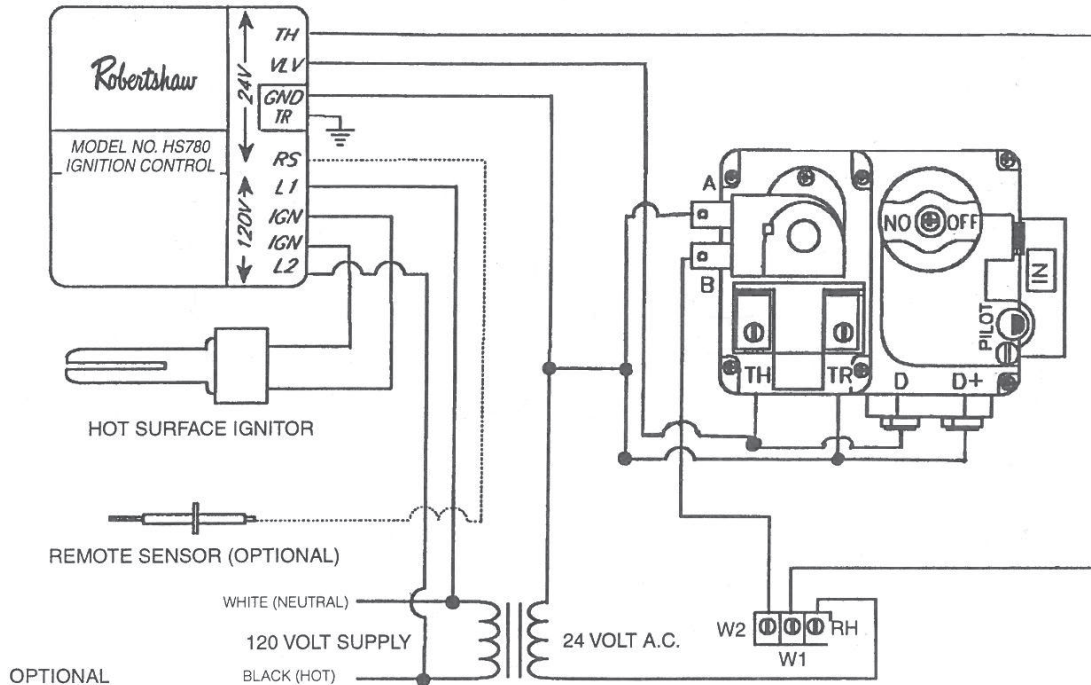
If the replacement gas valve being used has a “slow opener” feature it will be indicated in the factory model number by -S7A, -S7B or -S7C. Example: 7000BER-S7C. A gas valve having a “slow-opener” **WILL NOT WORK** on direct spark applications. The “slow-opener” can be quickly removed, see page 4 of the installation data sheet.



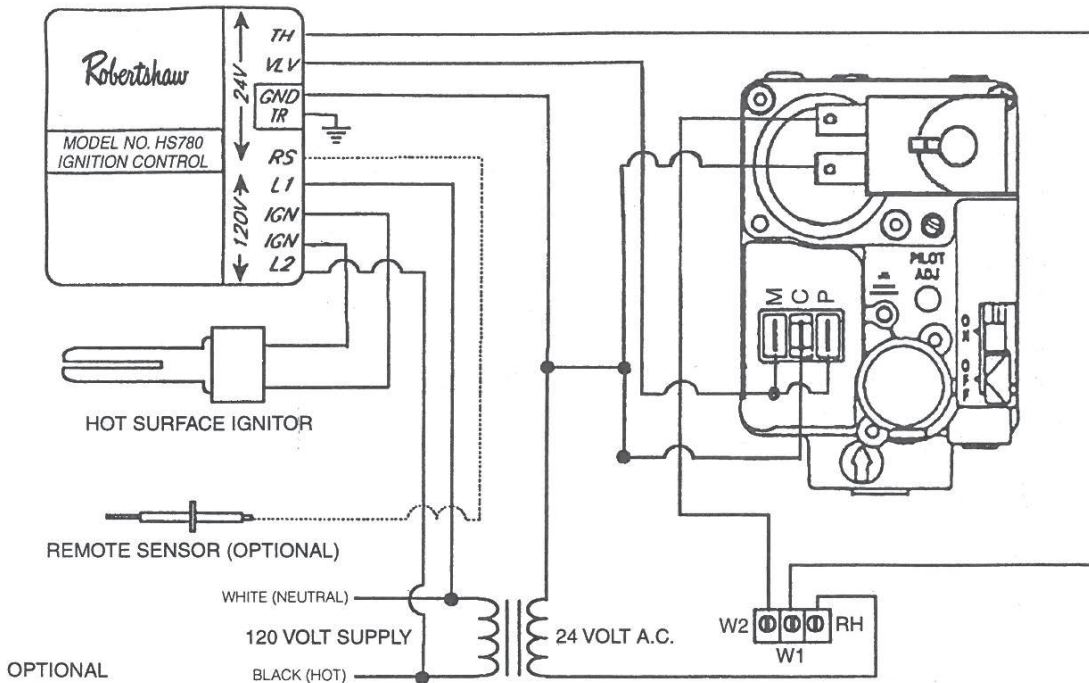
HOT SURFACE WIRING DIAGRAM TWO STAGE 700 SERIES GAS VALVE

NOTE:

If the replacement gas valve being used has a "slow opener" feature it will be indicated in the factory model number by -B7A, -B7B or -B7C. Example: 7000BER-B7C. A gas valve having a "slow-opener" **WILL NOT WORK** on hot surface applications. The "slow-opener" can be quickly removed, see page 4 of the installation data sheet.



HOT SURFACE WIRING DIAGRAM TWO STAGE 720 SERIES GAS VALVE



Customer Service Telephone 1.800.304.6563
Customer Service Facsimile 1.800.426.0804
HVACCustomerService@robertshaw.com

For Technical Service
Telephone 1.800.445.8299
Facsimile 1.630.260.7294
TechnicalService@robertshaw.com

Robertshaw®, Ranco®, Paragon® and Uni-Line® are trademarks of Robertshaw, its subsidiaries and/or affiliated companies. All other brands mentioned may be the trademarks of their respective owners.

www.uni-line.com
www.robertshaw.com
©2014 Robertshaw
12/14 -1-861 Rev C