

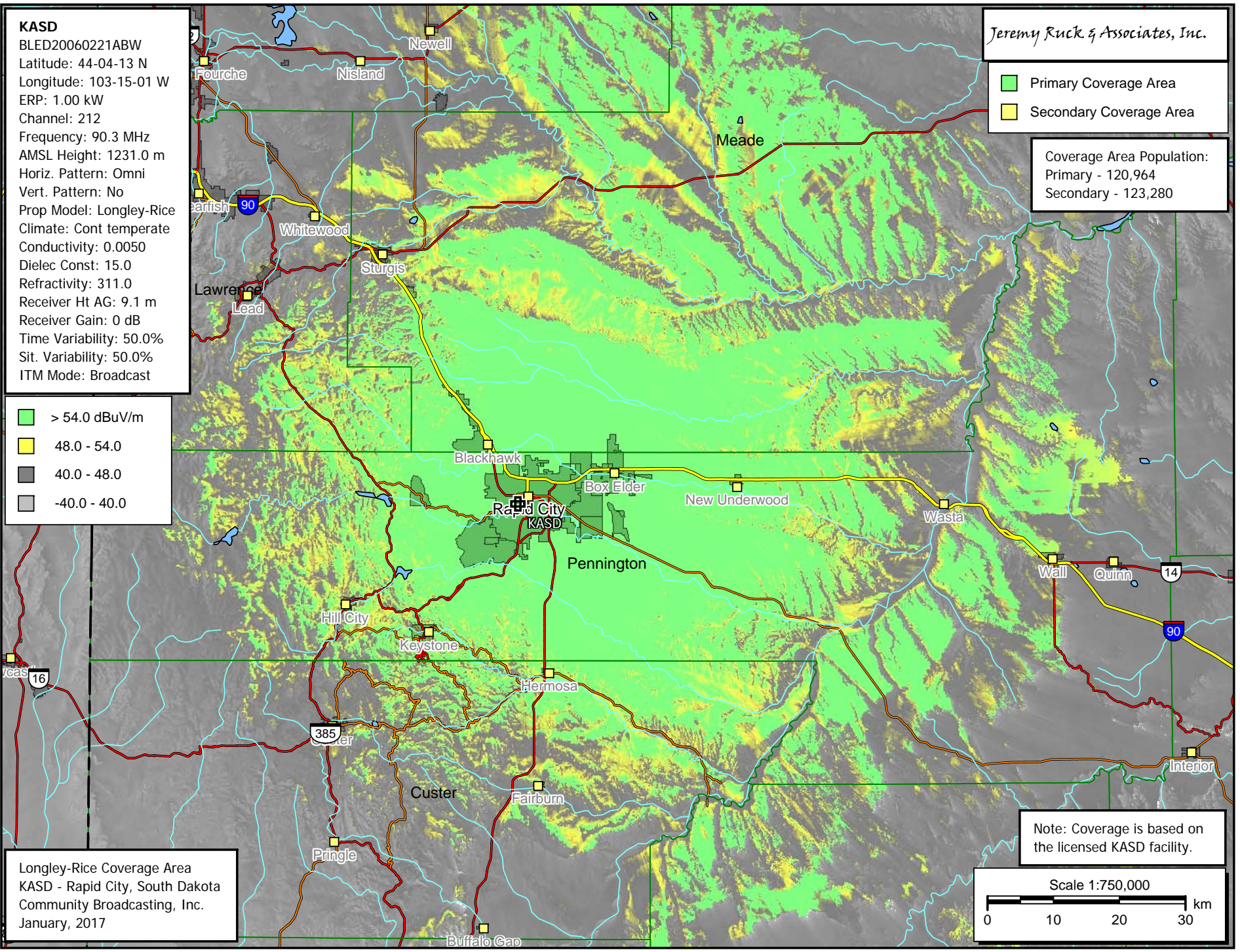
**KASD**  
 BLED20060221ABW  
 Latitude: 44-04-13 N  
 Longitude: 103-15-01 W  
 ERP: 1.00 kW  
 Channel: 212  
 Frequency: 90.3 MHz  
 AMSL Height: 1231.0 m  
 Horiz. Pattern: Omni  
 Vert. Pattern: No  
 Prop Model: Longley-Rice  
 Climate: Cont temperate  
 Conductivity: 0.0050  
 Dielec Const: 15.0  
 Refractivity: 311.0  
 Receiver Ht AG: 9.1 m  
 Receiver Gain: 0 dB  
 Time Variability: 50.0%  
 Sit. Variability: 50.0%  
 ITM Mode: Broadcast

*Jeremy Ruck & Associates, Inc.*

- Primary Coverage Area
- Secondary Coverage Area

Coverage Area Population:  
 Primary - 120,964  
 Secondary - 123,280

- > 54.0 dBuV/m
- 48.0 - 54.0
- 40.0 - 48.0
- 40.0 - 40.0



Longley-Rice Coverage Area  
 KASD - Rapid City, South Dakota  
 Community Broadcasting, Inc.  
 January, 2017

Note: Coverage is based on the licensed KASD facility.

